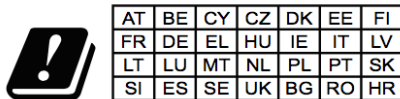


Grandstream Networks, Inc.

126 Brookline Ave, 3rd Floor
Boston, MA 02215. USA
Tel : +1 (617) 566 - 9300
Fax: +1 (617) 249 - 1987

www.grandstream.com



In all EU member states, operation of 5150
- 5350 MHz is restricted to indoor use only.



For Certification, Warranty and RMA information, please
visit www.grandstream.com



GSC3570

HD Intercom & Facility Control Station

Quick Installation Guide

Content

English.....	1
--------------	---

The GSC3570 is not pre-configured to support or make emergency calls to any type of hospital, law enforcement agency, medical care unit (“Emergency Service(s)”) or any other kind of Emergency Service. You must make additional arrangements to access Emergency Services. It is your responsibility to purchase SIP-compliant Internet telephone service, properly configure the GSC3570 to use that service, and periodically test your configuration to confirm that it works as you expect. It is also your responsibility to purchase traditional wireless or landline telephone services to access Emergency Services.

GRANDSTREAM DOES NOT PROVIDE CONNECTIONS TO EMERGENCY SERVICES VIA THE GSC3570. NEITHER GRANDSTREAM NOR ITS OFFICES, EMPLOYEES OR AFFILIATES MAY BE HELD LIABLE FOR ANY CLAIM, DAMAGE, OR LOSS, AND YOU HEREBY WAIVE ANY AND ALL SUCH CLAIMS OR CAUSES OF ACTION ARISING FROM OR RELATING TO YOUR INABILITY TO USE THE GSC3570 TO CONTACT EMERGENCY SERVICES, AND YOUR FAILURE TO MAKE ADDITIONAL ARRANGEMENTS TO ACCESS EMERGENCY SERVICES IN ACCORDANCE WITH THE IMMEDIATELY PRECEDING PARAGRAPH.

The GNU GPL license terms are incorporated into the device firmware and can be accessed via the Web user interface of the device at my_device_ip/gpl_license. It can also be accessed here: <http://www.grandstream.com/legal/open-source-software>

To obtain a CD with GPL source code information please submit a written request to info@grandstream.com

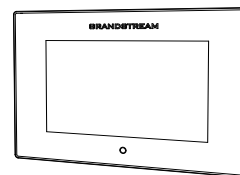
PRECAUTIONS

- Do not attempt to open, disassemble, or modify the device.
- Do not expose this device to temperatures outside range of -10 °C to 50 °C in operation and -20 °C to 60 °C in storage.
- Do not expose the GSC3570 to environments outside of the following humidity range: 10-90% RH (non-condensing).
- Do not power cycle your GSC3570 during system boot up or firmware upgrade. You may corrupt firmware images and cause the unit to malfunction.

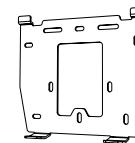
OVERVIEW

The GSC3570 is a powerful Intercom phone for door control and 2-way intercom. It features a 7” 1024x600 touch screen LCD, integrated dual-band 802.11ac Wi-Fi, 100M network port with PoE, full duplex 2-way HD audio with advanced AEC, and innovative telephony functionalities. The GSC3570 is fully interoperable with nearly all major SIP platforms on the market and can be seamlessly integrated with Grandstream’s entire range of UC product lines including SIP based door systems, security cameras, IP PBXs, and video conferencing systems and services. This Intercom phone is the perfect choice for users looking for an integrated video control and two-way voice communication solution for their wall-mount and desktop.

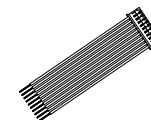
PACKAGE CONTENTS



GSC3570



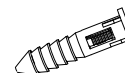
1x Installation Bracket



1 PH2.0-10P Alarm cable



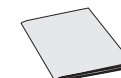
2x Self-tapping Screws



4x Self-tapping Screw Anchors

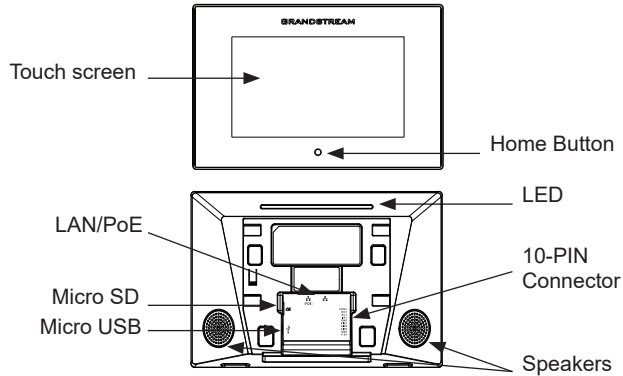


4x Self-tapping Screws



1x Quick Installation Guide

GSC3570 SETUP

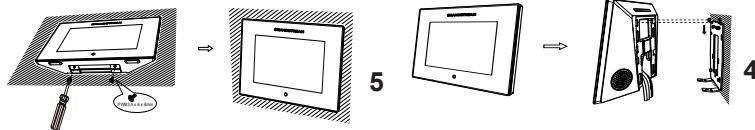
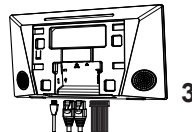
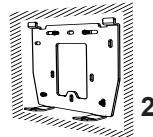
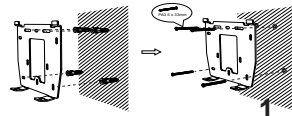


Device Installation:

The GSC3570 can be mounted on the wall or on the desktop (desktop bracket is sold separately). Please refer to the following steps for Wall installation:

On-Wall Mount:

1. Locate the equipment holder on the desired position. Drill four holes on the wall referring to the positions of the ones on the metal bracket. Then, fix a Screw Anchor in each hole.
2. Fix the metal bracket on the wall by Self-tapping Screws.
3. Plug in the cables to the proper GSC3570 ports on the back.
4. Align the position slots on device's back with their correct placement on the Metal Bracket, then fix it by pushing Down.
5. Plug in the Self-tapping Screws at bottom to attach the device to the metal bracket.



~3~

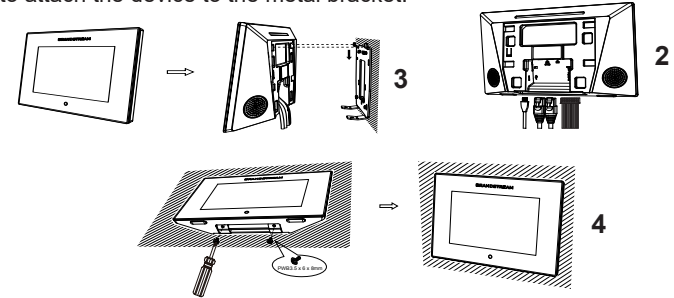
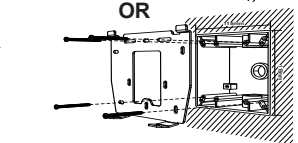
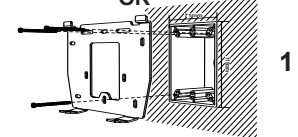
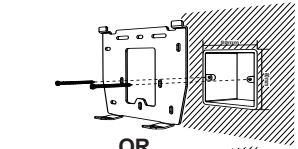
In-Wall Mount:

1. Locate the box screw holes and align them with the metal bracket holes. Then, fix a Self-tapping Screw on each hole.

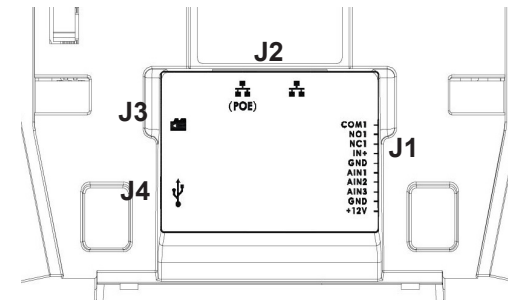
Below is the supported Box dimensions:

- 80mm x 80mm
- 71mm x 115mm
- 115mm x 115mm

2. Plug in the cables to the proper GSC3570 ports on the back.
3. Align the position slots on device's back with their correct placement on the Metal Bracket, then fix it by pushing Down.
4. Plug in the Self-tapping Screws at bottom to attach the device to the metal bracket.



GSC3570 Ports:



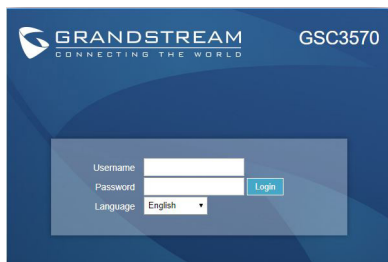
~4~

Jack	Port			Function	Remark
	Pin	Signal	Color		
J1	1	COM1	Orange	Alarm OUT	1 Relay output, normal open or close, max 125VAC/0.5A or max DC 30V/2A
	2	NO1	Yellow		
	3	NC1	Green		
	4	IN+	White	Alarm IN (Active)	Alarm isolated input, for voltage signal detection, IN+ connect the sensor's signal output, please connect the GND to Alarm device's GND or Negative of power. Active voltage range 9-15V
	5	GND	Black	Alarm GND	Voltage reference for IN+, Switch signal reference for AIN (1/2/3)
	6	AIN1	Blue	Alarm IN (Passive)	Alarm input, for button/door contacts switch signal detection. Please connect the Switch/button to AIN (1/2/3) and GND
	7	AIN2	Brown		
	8	AIN3	Gray		
	9	GND	Black	Power Supply	DC12V recommend, input voltage rang 9-15V Current at least 1A @12V
	10	+12V	Red		
J2	Network Port			- POE supply - LAN port	Dual 10/100 Mbps Network ports: One is POE port with class AF mode. The other one is a LAN port
J3	Micro SD Port			Data storage	Support microSD/SDHC/SDXC, up to 256G
J4	Micro USB Port			Data exchange	Data exchange port, Not recommended to use this port to power supply. If needed, please use 5V/2A adapter.

GSC3570 CONFIGURATION

Configure the GSC3570 Using a Web Browser:

1. Ensure your device is powered up and connected to the Internet.
2. Slide to the second home page and press "Setting"
3. Select "Network Status" to check the IP address.
4. Type the unit's IP address in your PC browser. (See figure below).
5. Enter admin's username and password to access the configuration menu. (The factory default username is "admin" while the default random password can be found on the sticker at the back of the unit).



Configure the GSC3570 from the LCD MENU:

1. Make sure the device is idle.
2. Slide to the second home page and press "Setting". Browse the GSC3570 MENU for Status, Network information, Features and Basic/Advanced Settings...
3. Press "Home" Button to go back to Idle screen.

Refer to online documents and FAQ for more detailed information: <http://www.grandstream.com/our-products>

For certification information, please refer to User Manuals:

<http://www.grandstream.com>

Common part:

This equipment complies with radiation exposure limits set forth for an uncontrolled environment. This transmitter must not be co-located or operating in conjunction with any other antenna or transmitter. This equipment should be installed and operated with minimum distance 20cm between the radiator& your body.

U.S. FCC Part 68 Regulatory Information

This equipment complies with Part 68 of the FCC rules. Located on the equipment is a label that contains, among other information, the ACTA registration number and ringer equivalence number (REN.) If requested, this information must be provided to the telephone company.

The REN is used to determine the quantity of devices which may be connected to the telephone line. Excessive REN's on the telephone line may result in the devices not ringing in response to an incoming call. In most, but not all areas, the sum of the REN's should not exceed five (5.0). To be certain of the number of devices that may be connected to the line, as determined by the total REN's contact the telephone company to determine the maximum REN for the calling area.

This equipment cannot be used on the telephone company-provided coin service. Connection to Party Line Service is subject to State Tariffs.

If this equipment causes harm to the telephone network, the telephone company will notify you in advance that temporary discontinuance of service may be required. If advance notice isn't practical, the telephone company will notify the customer as soon as possible. Also, you will be advised of your right to file a complaint with the FCC if you believe it is necessary. The telephone company may make changes in its facilities, equipment, operations, or procedures that could affect the operation of the equipment. If this happens, the telephone company will provide advance notice in order for you to make the necessary modifications in order to maintain uninterrupted service.

If the trouble is causing harm to the telephone network, the telephone company may request you to remove the equipment from the network until the problem is resolved.

This equipment uses the following USOC jacks: RJ45C.

It is recommended that the customer install an AC surge arrester in the AC outlet to which this device is connected. This is to avoid damaging the equipment caused by local lightning strikes and other electrical surges.

Since this device has the HAC function, the earpiece is easy to absorb small, please take care to avoid scratching.

If trouble is experienced with this equipment, please contact (Agent in the US):

Company Name: Grandstream Networks, Inc.

Address: 126 Brookline Ave, 3rd Floor Boston, MA 02215, USA

Tel: 1-617-5669300

Fax: 1-617-2491987

U.S. FCC Part 15 Regulatory Information

This device complies with part 15 of the FCC Rules. Operation is subject to the following two conditions:(1) this device may not cause harmful interference, and (2) this device must accept any interference received, including interference that may cause undesired operation.

Any Changes or modifications not expressly approved by the party responsible for compliance could void the user's authority to operate the equipment.

Note: This equipment has been tested and found to comply with the limits for a Class B digital device, pursuant to part 15 of the FCC Rules. These limits are designed to provide reasonable protection against harmful interference in a residential installation. This equipment generates, uses and can radiate radio frequency energy and, if not installed and used in accordance with the instructions, may cause harmful interference to radio communications. However, there is no guarantee that interference will not occur in a particular installation. If this equipment does cause harmful interference to radio or television reception, which can be determined by turning the equipment off and on, the user is encouraged to try to correct the interference by one or more of the following measures:

- Reorient or relocate the receiving antenna.
- Increase the separation between the equipment and receiver.
- Connect the equipment into an outlet on a circuit different from that to which the receiver is connected.
- Consult the dealer or an experienced radio/TV technician for help.

Canada Regulatory Information

Radio equipment

Operation of 5150-5250 MHz is restricted to indoor use only.

This device contains licence-exempt transmitter(s)/receiver(s) that comply with Innovation, Science and Economic Development Canada's licence-exempt RSS(s). Operation is subject to the following two conditions:

- (1) This device may not cause interference.
- (2) This device must accept any interference, including interference that may cause undesired operation of the device.

L'émetteur/récepteur exempt de licence contenu dans le présent appareil est conforme aux CNR d'Innovation, Sciences et Développement économique Canada applicables aux appareils radio exempts de licence. L'exploitation est autorisée aux deux conditions suivantes :

- 1) L'appareil ne doit pas produire de brouillage;
- 2) L'appareil doit accepter tout brouillage radioélectrique subi, même si le brouillage est susceptible d'en compromettre le fonctionnement.

CAN ICES-3 (B)/NMB-3(B)

Terminal equipment

This product meets the applicable Innovation, Science and Economic Development Canada technical specifications.

The Ringer Equivalence Number (REN) indicates the maximum number of devices allowed to be connected to a telephone interface. The termination of an interface may consist of any combination of devices subject only to the requirement that the sum of the RENs of all the devices not exceed five.

Ce produit répond à la innovation, des sciences et de Développement économique Canada spécifications techniques applicables.

Le nombre équivalent de sonneries (REN) indique le nombre maximal de terminaux qui peuvent être raccordés à une interface téléphonique. La terminaison d'une interface peut consister en une combinaison de dispositifs, à la seule condition que la somme des REN de tous les dispositifs ne dépasse pas cinq.

EU Regulatory Information

Support Frequency Bands and Power:

WLAN/BT 2.4 GHz < 20 dBm;

WLAN 5.2 GHz < 23 dBm;

WLAN 5.3/ 5.6 GHz < 20 dBm;

The simplified EU declaration of conformity referred to in Article 10(9) shall be provided as follows:

Hereby, [\[Grandstream Networks, Inc.\]](#) declares that the radio equipment type [\[GSC3570\]](#) is in compliance with Directive 2014/53/EU.

The full text of the EU declaration of conformity is available at the following internet address:
www.grandstream.com