



## GBX20

Extension Module

Quick Installation Guide

Grandstream Networks, Inc.

126 Brookline Ave, 3rd Floor  
Boston, MA 02215 USA  
Voice: (617) 566-9300  
Fax: (617) 249-1987

[www.grandstream.com](http://www.grandstream.com)



For Warranty and RMA information, please visit  
[www.grandstream.com](http://www.grandstream.com)

## **Content**

---

English.....	1
--------------	---

The GBX20 is not pre-configured to support or carry emergency calls to any type of hospital, law enforcement agency, medical care unit (“Emergency Service(s)”) or any other kind of Emergency Service. You must make additional arrangements to access Emergency Services. It is your responsibility to purchase SIP-compliant Internet telephone service, properly configure the GBX20 to use that service, and periodically test your configuration to confirm that it works as you expect. If you do not do so, it is your responsibility to purchase traditional wireless or landline telephone services to access Emergency Services.

GRANDSTREAM DOES NOT PROVIDE CONNECTIONS TO EMERGENCY SERVICES VIA THE GBX20. NEITHER GRANDSTREAM NOR ITS OFFICERS, EMPLOYEES OR AFFILIATES MAY BE HELD LIABLE FOR ANY CLAIM, DAMAGE, OR LOSS. YOU HEREBY WAIVE ANY AND ALL SUCH CLAIMS OR CAUSES OF ACTION ARISING FROM OR RELATING TO YOUR INABILITY TO USE THE GBX20 TO CONTACT EMERGENCY SERVICES, AND YOUR FAILURE TO MAKE ADDITIONAL ARRANGEMENTS TO ACCESS EMERGENCY SERVICES IN ACCORDANCE WITH THE IMMEDIATELY PRECEDING PARAGRAPH.

## PRECAUTIONS:

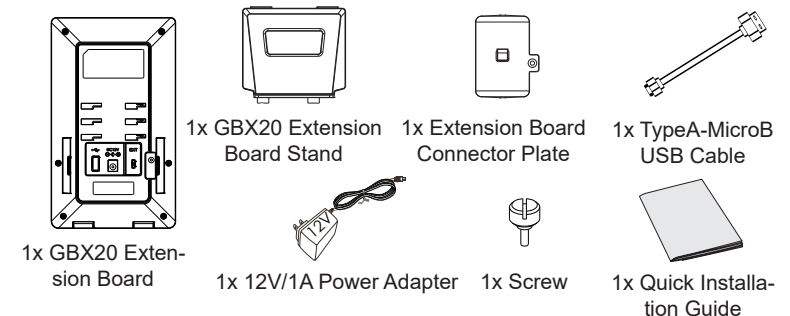
**WARNING:** Please DO NOT power cycle the GBX20 during system boot up or firmware upgrade. You may corrupt firmware images and cause the unit to malfunction.

**WARNING:** Use only the power adapter included in the GBX20 package. Using an alternative non-qualified power adapter may possibly damage the unit.

## OVERVIEW:

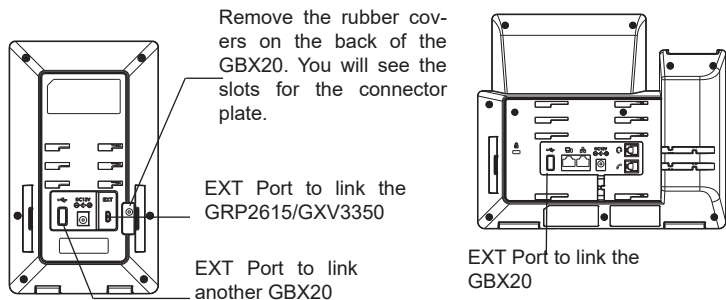
GBX20 delivers additional functionality, versatility and flexibility to Grandstream GRP2615 Carrier-Grade IP Phone or GXV3350 High-End Smart Video Phone for Android™. The GBX20 module features a large 480x272 graphic LCD and 20 programmable buttons (each with dual color LED). In addition, it allows up to 40 extensions per module by using the 2 page switch keys and up to 160 buttons when 4 extension modules are daisy-chained together. The GBX20 module is connected, powered, and controlled by the GRP2615/GXV3350, providing the benefits of the additional keys instantly. The GBX20 supports the traditional call features on each of its programmable buttons, including BLA (bridged line appearance)/SCA (shared call appearance), BLF (busy lamp field, standard or eventlist), Call Park/Pick-up, Speed Dial, Presence, Intercom, and conference/transfer/forward. The GBX20 is the ideal solution for offices that manage high call volumes or an office receptionist. By using the GBX20 the telephone attendant can ensure maximum office productivity by efficiently monitoring and dispatching multiple incoming calls.

## PACKAGE CONTENTS:

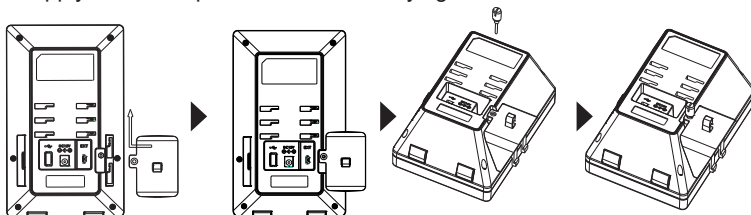


## INSTALLING GBX20 EXTENSION MODULE:

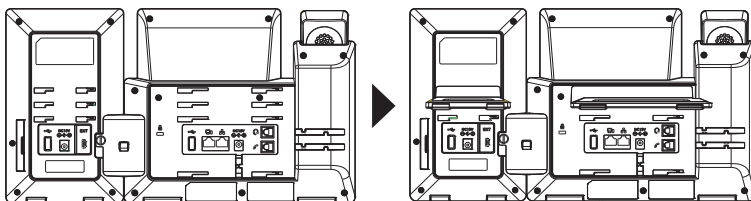
1. On the back of GBX20 and the phone, there are slots for the connector plate. Attach the connector plate between the slots for GBX20 and the extension board.



2. Apply the screw provided and securely tighten it in.



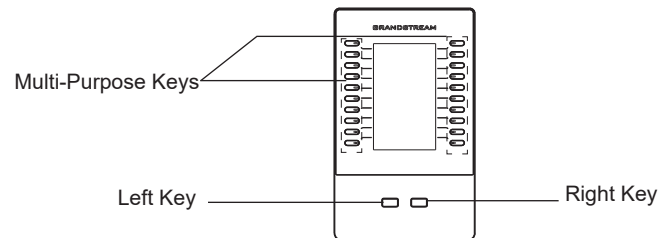
3. Connect the extension board to the phone via the EXT port using the USB cable provided.
4. Install both stands on the phone and the GBX20 board.



**Note:** In case two or more GBX20 extension modules are connected to the GRP2615/GXV3350, the second GBX20 needs to be powered on by a 12V/1A PSU.

## TIPS FOR USING THE GBX20:

1. Power up the GRP2615/GXV3350, the GBX20 extension board will show the booting up screen with version information and connecting status.
2. After successfully booting up, the extension board will stay in idle. Press and hold the Left key for 3 seconds to check the version information and status.
3. Press any key to return to normal display.
4. Press Left or Right key to switch between two pages if there are multi-purpose keys configured in both pages.
5. Press the multi-purpose key to perform the assigned function.



## CONFIGURING GBX20 EXTENSION MODULE:

After the GBX20 is successfully booted up and connected to the GRP2615/GXV3350, the GBX20 can be configured via the host GRP2615/GXV3350's web GUI.

1. Login the GXV3350/GRP2615 web GUI and configure multiple purpose keys for extension board 1/2/3/4 under web GUI → Applications → Programmable Keys → GBX20 Settings page.
2. On the GRP2615/GXV3350 extension board (i.e., GBX20), press LEFT or RIGHT button to browse all the MPK → Programmable Keys' status in different pages.
3. For more configuration information, please refer to the GRP2615 or GXV3350's user manual.

Refer to online documents and FAQ for more detailed information:  
<http://www.grandstream.com/our-products>

**FCC Caution:**

Any Changes or modifications not expressly approved by the party responsible for compliance could void the user's authority to operate the equipment.

This device complies with part 15 of the FCC Rules. Operation is subject to the following two conditions: (1) This device may not cause harmful interference, and (2) this device must accept any interference received, including interference that may cause undesired operation.

Note: This equipment has been tested and found to comply with the limits for a Class B digital device, pursuant to part 15 of the FCC Rules. These limits are designed to provide reasonable protection against harmful interference in a residential installation. This equipment generates, uses and can radiate radio frequency energy and, if not installed and used in accordance with the instructions, may cause harmful interference to radio communications. However, there is no guarantee that interference will not occur in a particular installation. If this equipment does cause harmful interference to radio or television reception, which can be determined by turning the equipment off and on, the user is encouraged to try to correct the interference by one or more of the following measures:

- Reorient or relocate the receiving antenna.
- Increase the separation between the equipment and receiver.
- Connect the equipment into an outlet on a circuit different from that to which the receiver is connected.
- Consult the dealer or an experienced radio/TV technician for help.