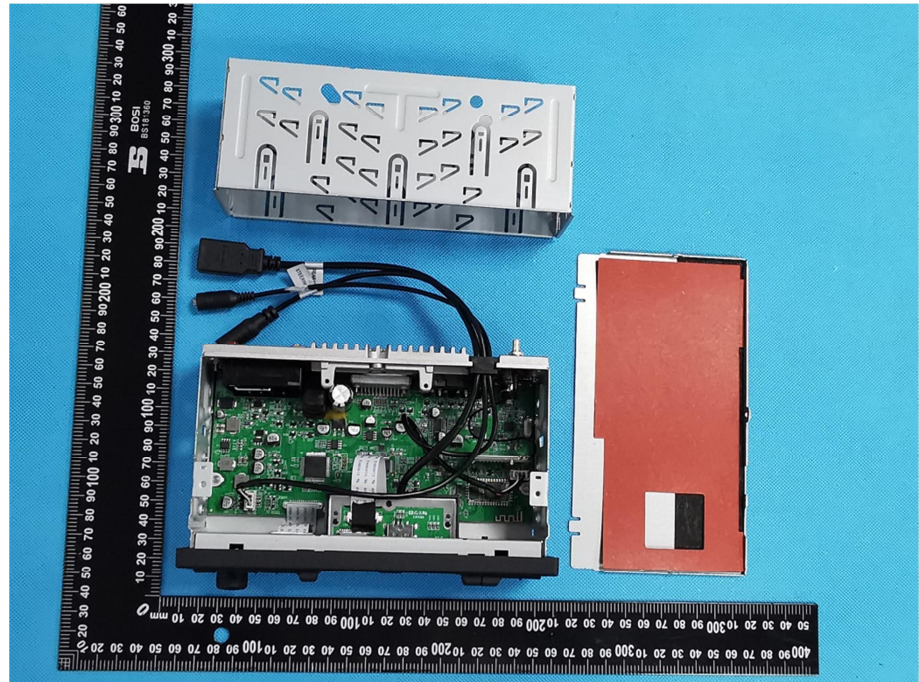
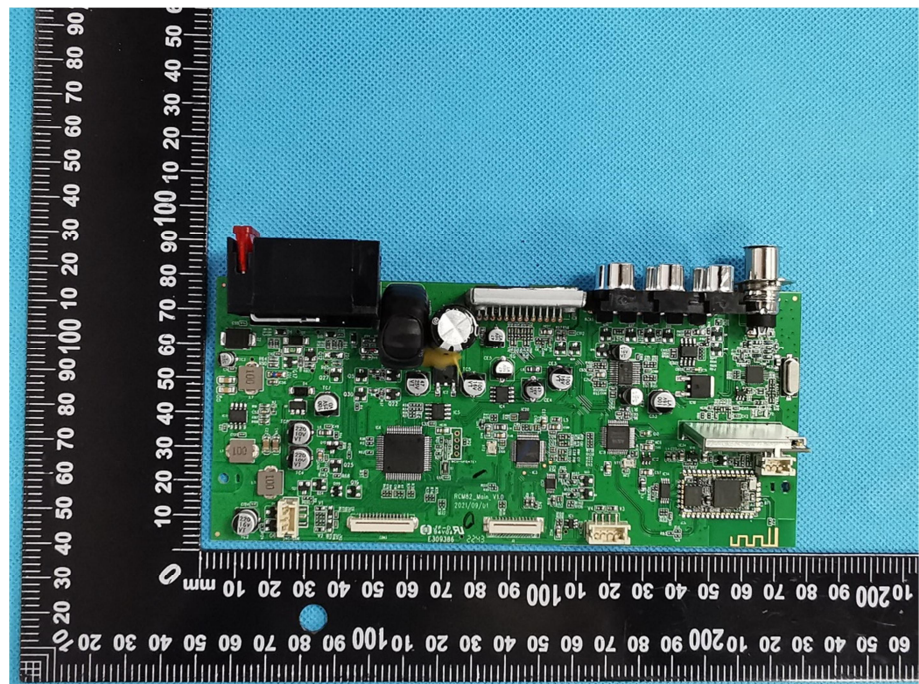


### EXHIBIT 3 - EUT INTERNAL PHOTOGRAPHS

**EUT Housing and Board View 1**

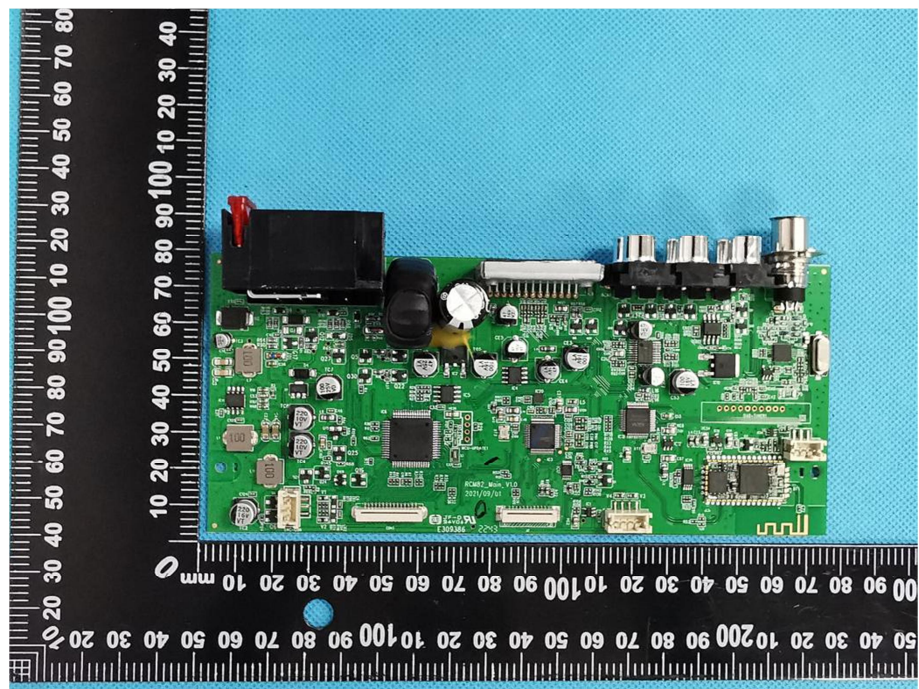


**Solder Board-Component View 1**

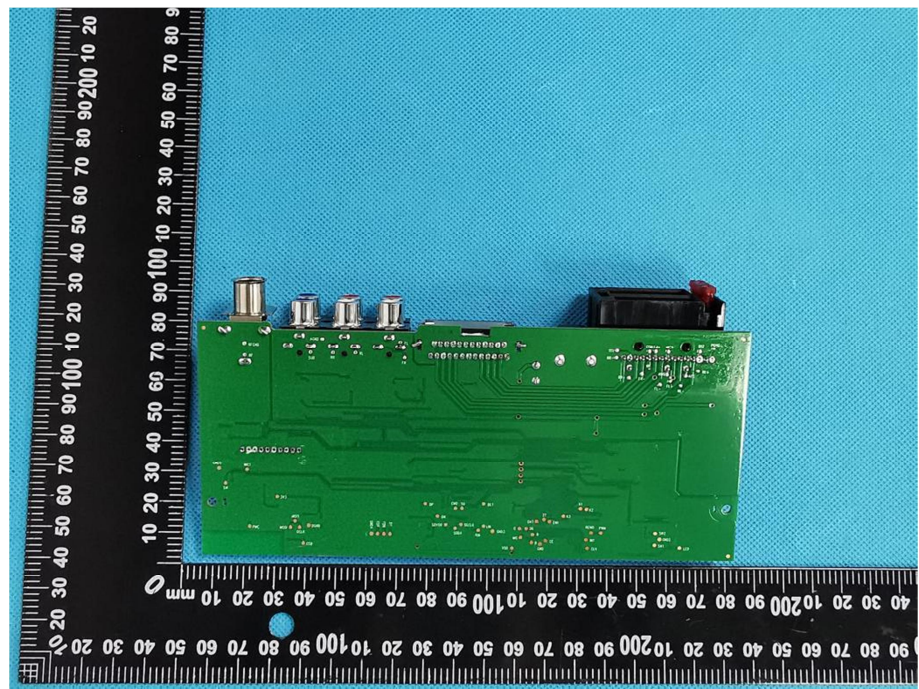


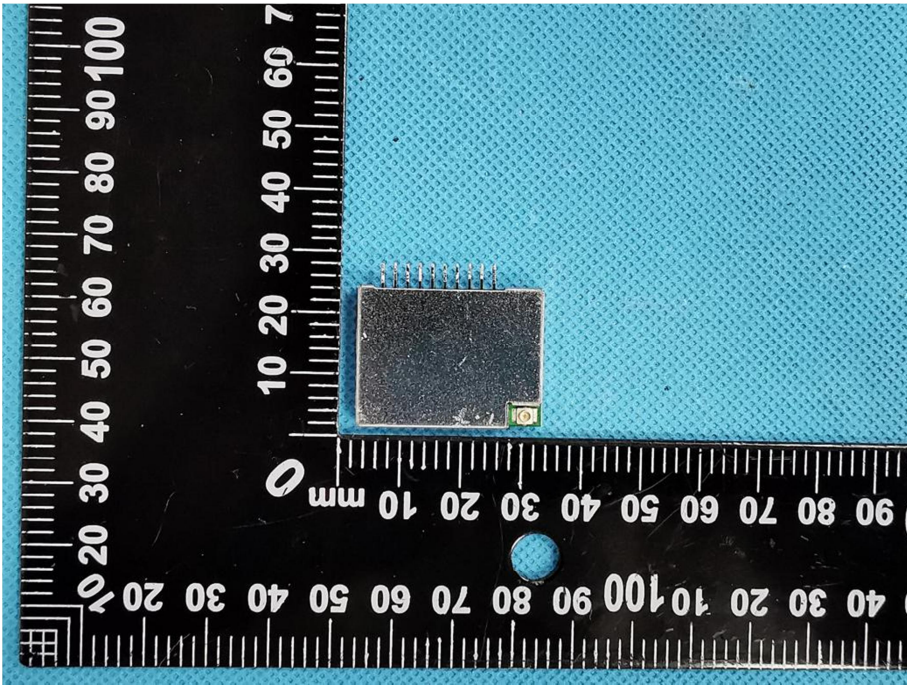
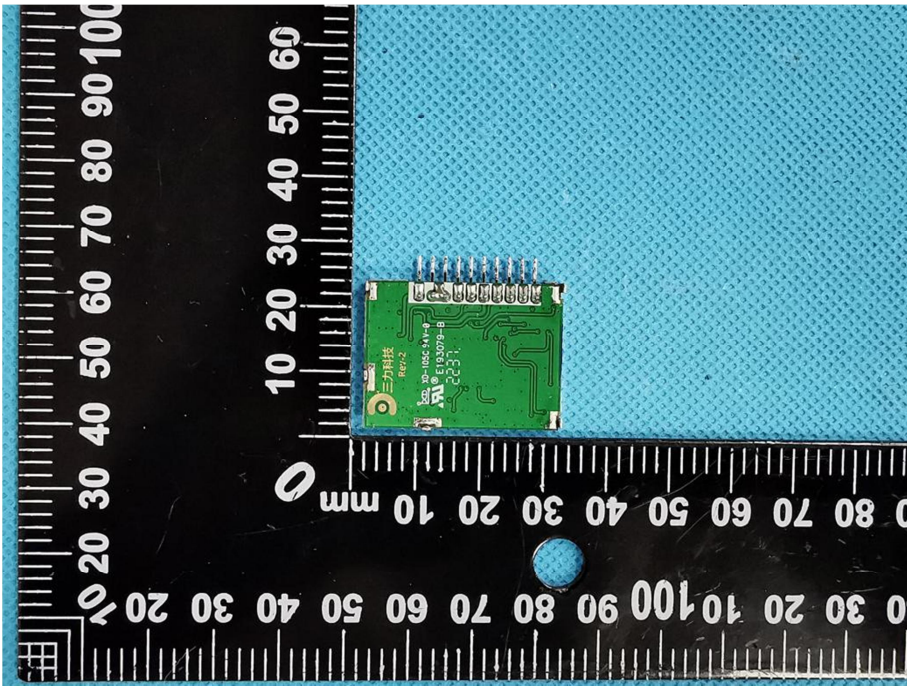


**Solder  
Board-Component  
View 2**



**Solder  
Board-Component  
View 3**



<p><b>Solder Board-Component View 4</b></p>	 A photograph showing the solder side of a component on a blue PCB. The component is a dark, square chip with numerous pins extending from its top edge. A small gold-colored component is visible on the right side of the chip. A black ruler with white markings is placed below the component for scale, showing measurements in millimeters. The ruler is oriented vertically, with the 0 mark at the top and the 100 mark at the bottom.
<p><b>Solder Board-Component View 5</b></p>	 A photograph showing the solder side of a component on a blue PCB. The component is a green PCB with a complex circuit pattern and a row of pins along its top edge. Text on the PCB includes "三力科技" (Sanyou Technology), "R04-2", "100% 100% 100%", "AM E193078-B", and "CC51". A black ruler with white markings is placed below the component for scale, showing measurements in millimeters. The ruler is oriented vertically, with the 0 mark at the top and the 100 mark at the bottom.