

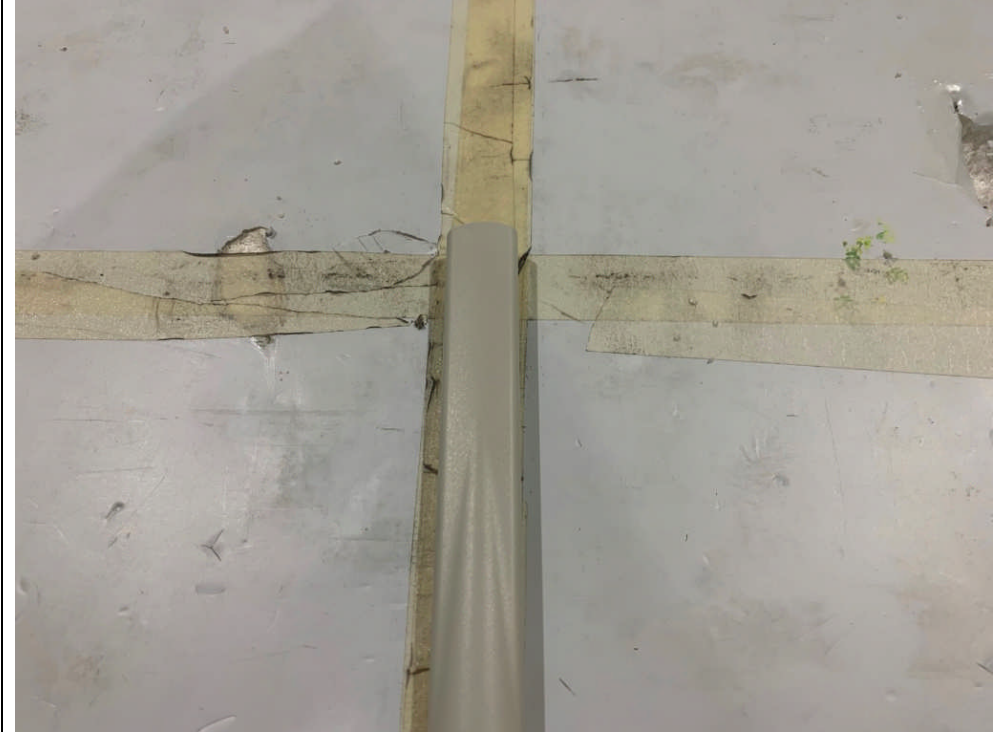
SGS

Test setup photos of EUT

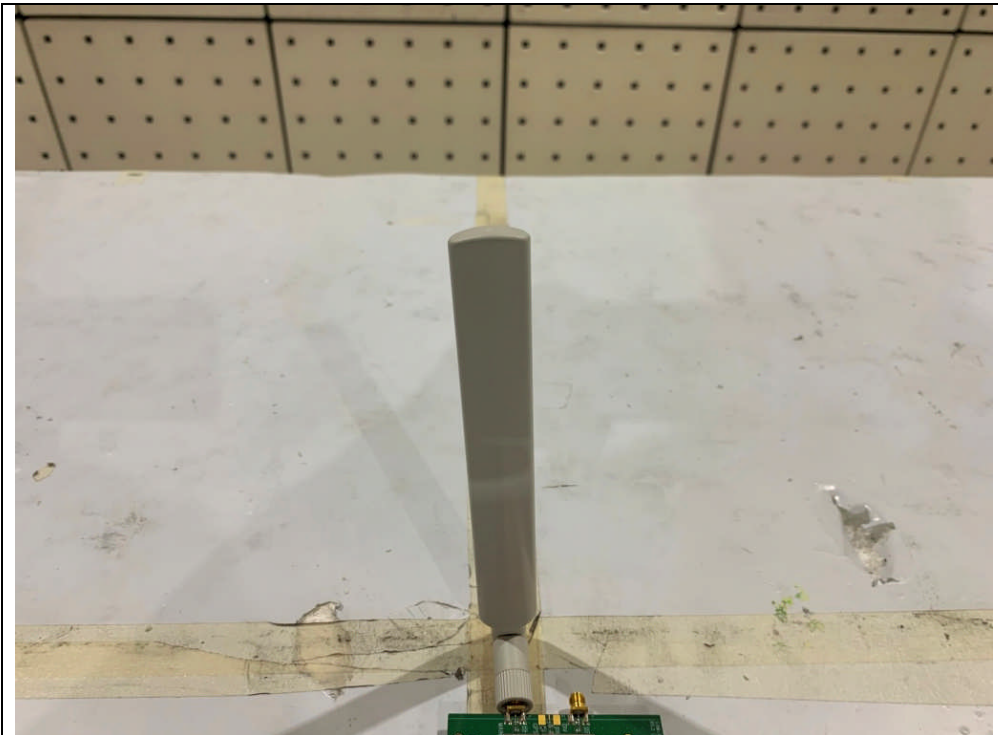
1. Orthogonal planes of EUT

- The testing was set in the three orthogonal planes and measured for each position (X, Y, Z).

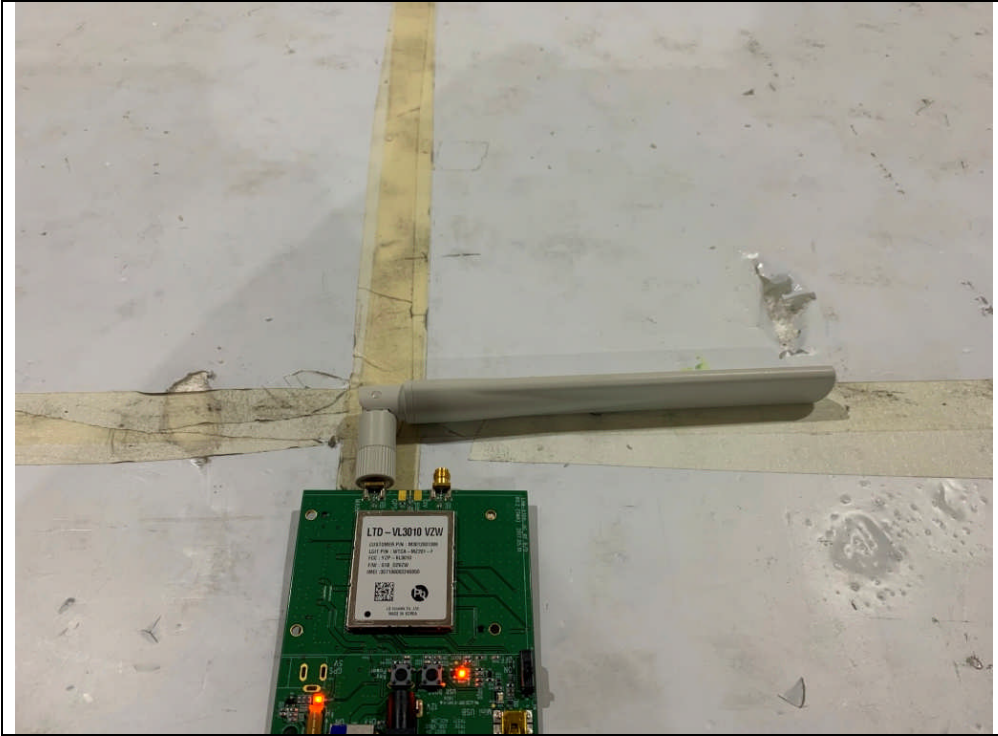
A. X-axis



B. Y-axis



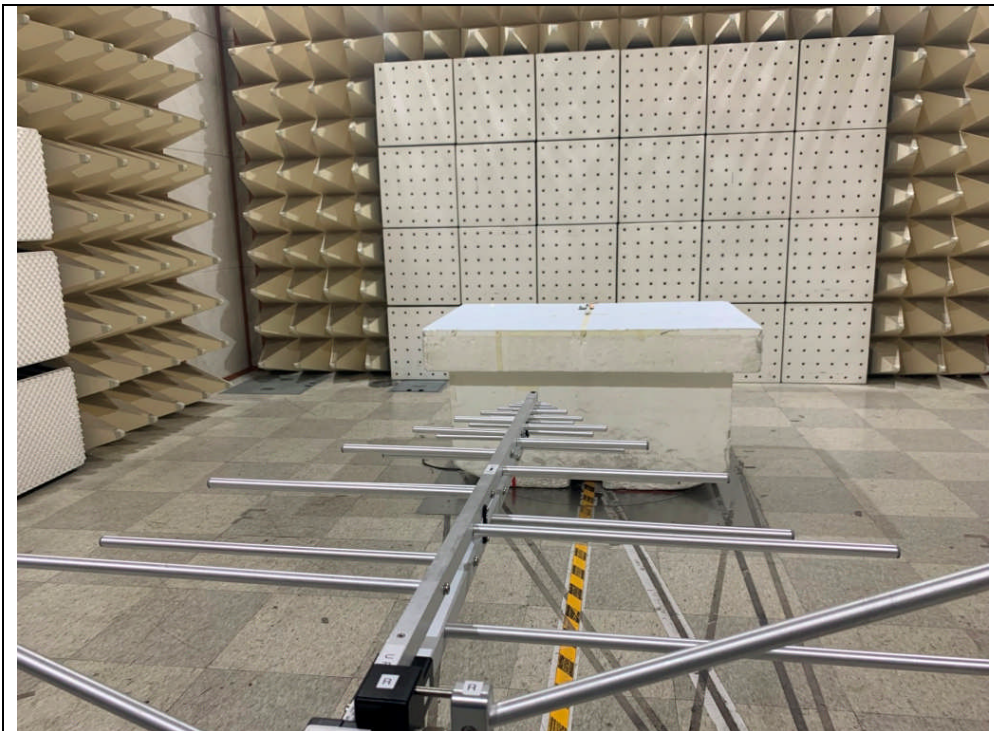
C. Z-axis



2. Worst case of orthogonal planes each frequency band

- Test setup photos for each mode were reported as representative worst axis after radiated measurements for each position were complete.

- Photo of Radiated Spurious Emission Test (Below 1 GHz)



- Photo of Radiated Spurious Emission Test (Above 1 GHz)

