

Home Security Camera



REGULATION INFORMATION TO THE USER (FCC)

This equipment has been tested and found to comply with the limits for a Class B digital device, pursuant to part 15 of the FCC Rules. These limits are designed to provide reasonable protection against harmful interference in a residential installation. This equipment generates, uses and can radiate radio frequency energy and, if not installed and used in accordance with the instructions, may cause harmful interference to radio communications.

However, there is no guarantee that interference will not occur in a particular installation. If this equipment does cause harmful interference to radio or television reception, which can be determined by turning the equipment off and on, the user is encouraged to try to correct the interference by one or more of the following measures:

- Reorient or relocate the receiving antenna.
- Increase the separation between the equipment and receiver.
- Connect the equipment into an outlet on a circuit different from that to which the receiver is connected.
- Consult the dealer or an experienced radio/ TV technician for help.

This device complies with part 15 of the FCC Rules. Operation is subject to the following two conditions:

- (1) This device may not cause harmful interference, and
- (2) This device must accept any interference received, including interference that may cause undesired operation.

Caution: Any changes or modifications to the equipment not expressly approved by the party responsible for compliance could void user's authority to operate the equipment.

This appliance and its antenna must not be co-located or operation in conjunction with any other antenna or transmitter.

A minimum separation distance of 20 cm must be maintained between the antenna and the person for this appliance to satisfy the RF exposure requirements.

REGULATION INFORMATION TO THE USER (IC)

This device complies with Industry Canada licence-exempt RSS standard(s). Operation is subject to the following two conditions:

- (1) this device may not cause interference, and
- (2) this device must accept any interference, including interference that may cause undesired operation of the device.

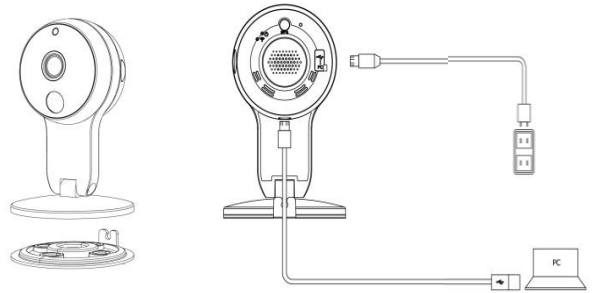
This equipment should be installed and operated with a minimum distance of 20cm between the radiator and your body.

Le présent appareil est conforme aux CNR d'Industrie Canada applicables aux appareils radio exempts de licence. L'exploitation est autorisée aux deux conditions suivantes:

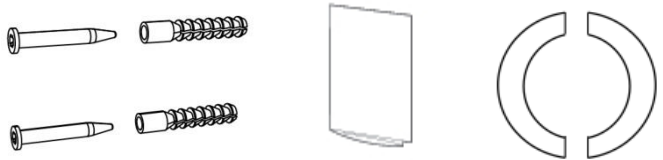
- (1) l'appareil ne doit pas produire de brouillage, et
- (2) l'utilisateur de l'appareil doit accepter tout brouillage radioélectrique subi, même si le brouillage est susceptible d'en compromettre le fonctionnement.

Cet équipement doit être installé et utilisé avec un minimum de 20 cm de distance entre la source de rayonnement et votre corps

1. Product & Accessories



IP Network Camera, Adapter, Ethernet to Micro USB Cable



Anchor & Screw

Quick Manual

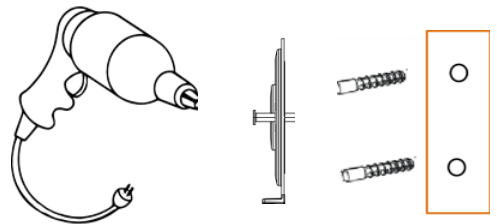
Non-slip pad

2. Operating Condition

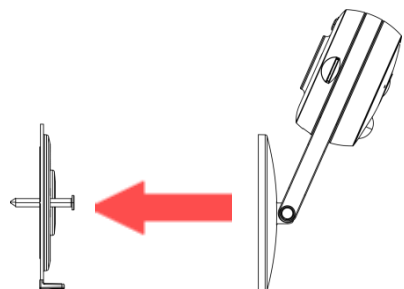
- IP Network Camera : 32°F~104°F

3. Wall mount Installation

1. Tighten two screws to fix the bracket on the wall using screw driver.

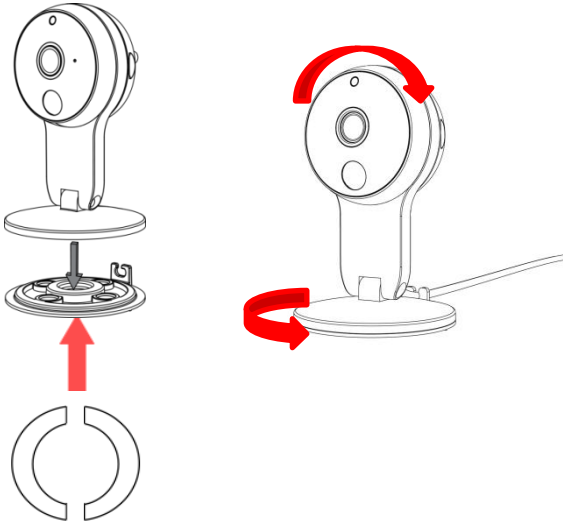


2. Push and lock stand body to the bracket .



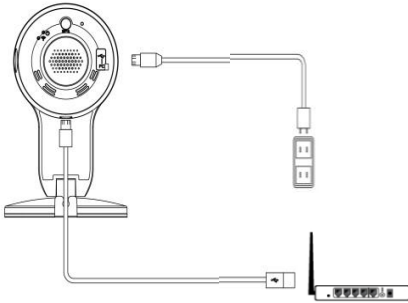
4. Table-top installation

1. Attach the non-slip pad under mount bracket and lock the camera body.
2. Adjust the camera view direction



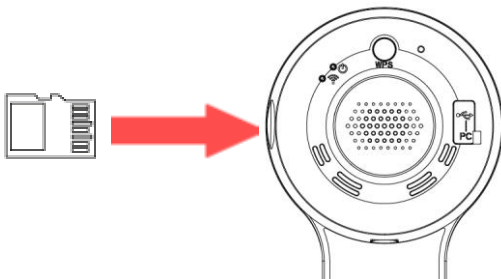
5. Pairing the Device

1. Plug in the camera.
2. Connect ethernet cable to controller ethernet port.
3. Please follow instructions on their controller.

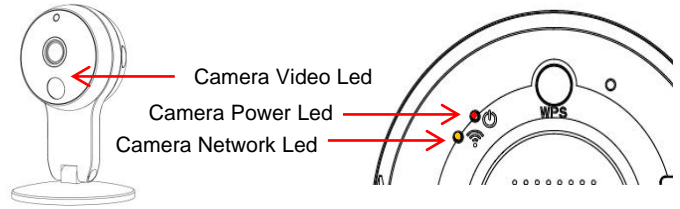


6. Mount SD Card(Optional)

1. Insert a micro SD memory (be careful memory up/down side)



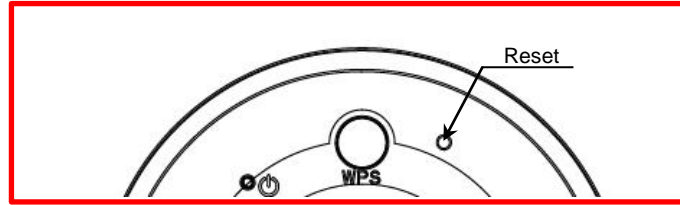
7. LED Description



LED	Status	Description
Camera Power LED	Blinking Green	Firmware updating
	Pulsing Amber	Connecting to Server
	Pulsing Green	Booting
	Solid Amber	No Connectivity to Server
	Solid Green	Working
	Solid Red	Malfunction
Camera Network LED	Off	Power Off
	Pulsing Green	Connecting to Router
	Pulsing Red	No Connectivity to Router
	Solid Green	Network Working
	Solid Red	Network Working with weak signal (RSSI < -80)
	Off	Network Disabled
Camera Video LED	Solid Green	Recording
	Off	Camera not Working

8. Factory Reset

Press and hold 'Reset' button more than 10 seconds until blink red of Network LED



9. Caution

- 1) This camera is an indoor good. (Don't install outdoor)
- 2) Don't cover vent hole
- 3) Don't drop water or chemical substance.
- 4) Strong light is a cause of some image quality problem. (sun light, headlight from automobiles, etc.)