



# VB-1000 Wireless Audio System User Manual



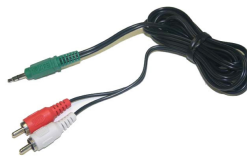
## Features

- Multifunction Audio and Massage System
  - Listen to audio
  - Relax to a vibration massage
  - Synchronize massage to the beat of the bass produced off of MP3s, iPODs, CDs, DVDs, Video games and Home Theater Equipment.
- Hi/Lo/Off Massage function with or without audio
- Volume and Bass controls
- Simple installation
- User friendly
- Entire System is Low Voltage and Thermal Protected.
- Wireless Audio from MP3s, iPODs, CDs, DVDs, Video games, Stereo, TV, and Home Theater Equipment.



## Accessories Supplied with VB-1000 Audio System

1. Wireless Console.
2. Wall Power Supply.
3. Mid Range Speakers.
4. Clam Shell Vibration Motors
5. Sub Woofer Speaker.
6. Wireless Transmitter.
7. RCA Stereo to 3.5mm stereo plug cable.





# VB-1000 Wireless Audio System User Manual

## TX / RX specification:

1. TX Power supply 3V DC
2. TX Current 40mA
3. RX Current 20mA
4. RX Transmission distance: < 100 ft (No Buildings or other barriers)
5. Environmental temperature -10°~70
6. Modulation mode: FSK
7. TX Work frequency 914, 914.5,915MHz
8. RX Work frequency 914, 914.5,915MHz
9. TX Power < 10dBm
10. RX Sensitivity:-100dBm
11. **RX frequency range 50Hz~13KHz**
12. **Second harmonic** suppression: -40dB
13. Band quantity: 3 channels



## FCC NOTE:

THE MANUFACTURER IS NOT RESPONSIBLE FOR ANY RADIO OR TV INTERFERENCE CAUSED BY UNAUTHORIZED MODIFICATIONS TO THIS EQUIPMENT. SUCH MODIFICATIONS COULD VOID THE USER'S AUTHORITY TO OPERATE THE EQUIPMENT.

This device complies with Part 15 of the FCC Rules.

Operation is subject to the following two conditions:

1. This device may not cause harmful interference, and
2. This device must accept any interference received, including interference that may cause undesired operation

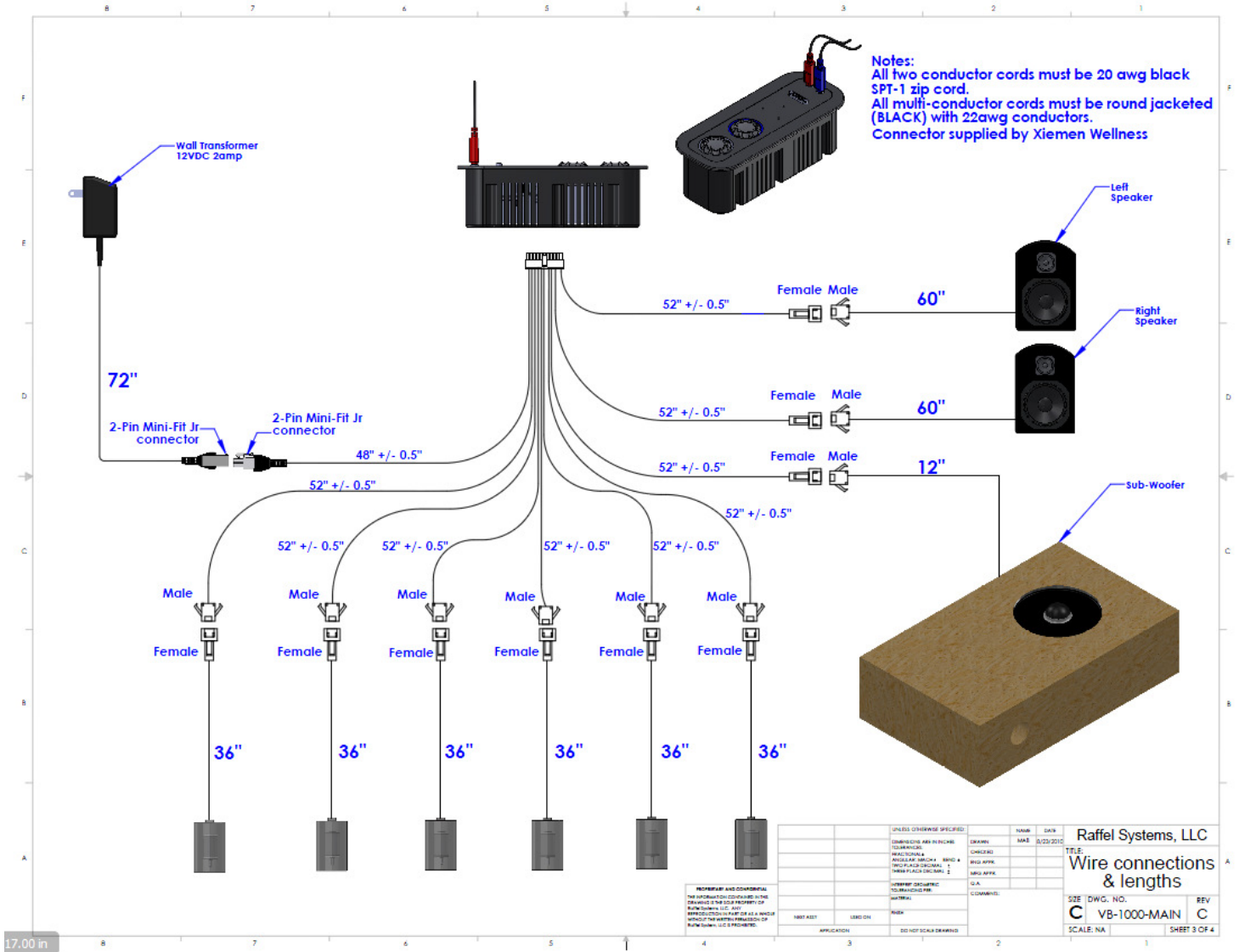
This equipment has been tested and found to comply with the limits for a Class B digital device, pursuant to part 15 of the FCC Rules. These limits are designed to provide reasonable protection against harmful interference in a residential installation. This equipment generates uses and can radiate radio frequency energy and, if not installed and used in accordance with the instructions, may cause harmful interference to radio communications. However, there is no guarantee that interference will not occur in a particular installation. If this equipment does cause harmful interference to radio or television reception, which can be determined by turning the equipment off and on, the user is encouraged to try to correct the interference by one or more of the following measures:

- Reorient or relocate the receiving antenna.
- Increase the separation between the equipment and receiver.
- Connect the equipment into an outlet on a circuit different from that to which the receiver is connected.
- Consult the dealer or an experienced radio/TV technician for help.



# VB-1000 Wireless Audio System User Manual

## Interconnect Wiring of the Audio System with Wireless Receiver.





# VB-1000 Wireless Audio System User Manual

## Operation:

### POWER:

1. Plug wall adaptor into wall outlet.
2. Press Power button to activate the massage.
3. Turn the Volume button Clockwise to turn the audio function ON.

### SOUND FUNCTIONS:

Plug in supplied cable from the Console box then into the source of the audio device used. If this unit is a wireless unit, Plug in the Audio Signal into the transmitter input as shown above. Then slide power switch to the ON position on the transmitter. Make sure Band 1 is selected on the transmitter.

### MESSAGE FUNCTIONS:

Press Massage once (green LED) for low intensity, twice (red LED) for high intensity, and again to turn function massage off.

### SYNCHRONIZATION FOR MESSAGE:

Press Sync once to sync audio to massage, press Sync twice to turn off sync function.

### NOTES:

- Intensity of massage can be increased by turning up the volume on audio source.
- Power Audio off by turning the volume control knob fully Counter-Clockwise.
- Volume and Bass buttons control speakers and subwoofer.



# VB-1000 Wireless Audio System User Manual

## WARRANTY PAGE

### Limited Warranty

Raffel Systems, LLC warrants this product (including any accessories) against defects in material and workmanship for a period of 12 months from the date of the first consumer purchase. This warranty is enforceable only by the original purchaser only. ALL DAMAGED OR MISSING PARTS MUST BE REPORTED WITHIN 14 DAYS OF PURCHASE.

This warranty covers all defects in material and workmanship in this product, but **DOES NOT COVER** the following.

1. Damage, deterioration or malfunction resulting from:
  - Acts of God, accident, misuse, abuse, negligence, improper installation, maintenance, improper operation, or failure to follow the instructions contained in this Owner's Manual.
  - Any damage in the shipment of the products.(Claims must be presented to the carrier) Repair, attempted repair, or modifications done by anyone other than Raffel System technicians.
  - Any unit which has been modified or attempted to be modified or altered in anyway whatsoever.
2. Normal wear and periodic maintenance.
3. Any unit used for industrial or commercial purposes (including rental).
4. Products sold AS IS or WITH ALL FAULTS, or consumables (such as fuses, batteries, etc).
5. Customer instruction installation and set up adjustments or signal reception problems.
6. Raffel Systems, LLC will repair or replace (at it's discretion) the units covered by this warranty, without charge to the consumer for labor or materials.

#### **CUSTOMERS ARE RESPONSIBLE:**

- FOR INITIAL SHIPPING CHARGES. However, Raffel Systems will pay the return shipping charges to any destination within the USA if repairs are covered by the warranty.
- TO OBTAN WARRANTY SERVICE, please call Raffel Systems Service Center.
- REPAIR OR REPLACEMENT AS PROVIDED UNDER THIS WARRANTY IS THE EXCLUSIVE REMEDY OF THE CONSUMER. RAFFEL SYSTEMS SHALL NOT BE LIABEL FOR ANY INCIDENTAL OR CONSEQUENTIAL DAMAGES FOR BREACH OF ANY EXPRESSED OR IMPLIED WARRANTY ON THIS PRODUCT.EXCEPT TO THE EXTENT PROHIBITED BY APPLICABLE LAW, ANY IMPLIED AWRRANTIES,INCLUDING WARRANTIES OF MERCHANTABILITY AND FITNESS FOR A PARTICULAR PURPOSE, ARE LIMITED IN DURATION TO THE LENGTH OF THIS WARRANTY.