

FCC

SAR

TEST REPORT

ISSUED BY
Shenzhen BALUN Technology Co., Ltd.



FOR

Intel Dual Band Wireless-AC 3165

ISSUED TO
Handheld Group AB

Kinnegatan 17, 53133 Lidköping Sweden

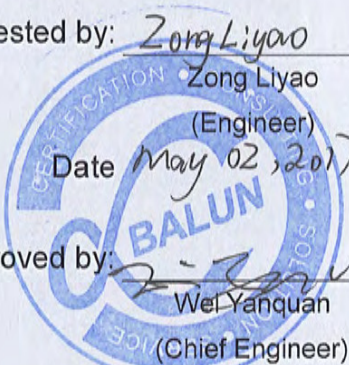


Tested by: Zong Liyao
Zong Liyao
(Engineer)

Date May 02, 2017

Approved by: Wei Yanquan
Wei Yanquan
(Chief Engineer)

Date Aug 02, 2017



Report No.: BL-SZ1670309-701
EUT Name: Intel Dual Band Wireless-AC 3165

Model Name: 3165NGW

Brand Name: N/A

FCC ID: YY3-1824V1

Test Standard: FCC 47 CFR Part 2.1093

ANSI C95.1: 1999

IEEE 1528: 2013

Maximum SAR: Body (1 g): 1.423 W/kg

Test Conclusion: Pass

Test Date: Nov. 15, 2016 ~ Nov. 20, 2016

Date of Issue: May 02, 2017

NOTE: This test report can be duplicated completely for the legal use with the approval of the applicant; it shall not be reproduced except in full, without the written approval of Shenzhen BALUN Technology Co., Ltd. BALUN Laboratory. Any objections should be raised within thirty days from the date of issue. To validate the report, please visit BALUN website.

Revision History

<u>Version</u>	<u>Issue Date</u>	<u>Revisions Content</u>
<u>Rev. 01</u>	<u>Apr. 18, 2017</u>	<u>Initial Issue</u>
<u>Rev. 02</u>	<u>May 02, 2017</u>	<u>Updated the Hardware Version in the section 2.4</u>

TABLE OF CONTENTS

1 GENERAL INFORMATION..... 5

1.1 Identification of the Testing Laboratory 5

1.2 Identification of the Responsible Testing Location 5

1.3 Test Environment Condition 5

1.4 Announce 6

2 PRODUCT INFORMATION 7

2.1 Applicant Information 7

2.2 Manufacturer Information..... 7

2.3 Factory Information..... 7

2.4 General Description for Equipment under Test (EUT)..... 7

2.5 Ancillary Equipment..... 8

2.6 Technical Information 8

3 SUMMARY OF TEST RESULTS 9

3.1 Test Standards 9

3.2 Device Category and SAR Limit 9

3.3 Test Result Summary 11

3.4 Test Uncertainty 12

4 SAR MEASUREMENT SYSTEM 14

4.1 Definition of Specific Absorption Rate (SAR) 14

4.2 SATIMO SAR System 14

5 SYSTEM VERIFICATION 23

5.1 Antenna Port Test Requirement 23

5.2 Purpose of System Check 23

5.3 System Check Setup 23

6 EUT TEST POSITION CONFIGURATUONS..... 24

6.1	Head Exposure Conditions	24
6.2	Body-worn Position Conditions	25
6.3	Hotspot Mode Exposure Position Conditions	26
7	SAR MEASUREMENT PROCEDURES	27
7.1	SAR Measurement Process Diagram	27
7.2	SAR Scan General Requirements	28
7.3	SAR Measurement Procedure	29
7.4	Area & Zoom Scan Procedures	29
8	CONDUCTED RF OUPUT POWER	30
8.1	WIFI.....	30
8.2	Bluetooth	34
8.3	Rated RF Power Output	34
9	EUT ANTENNA LOCATION SKETCH	37
9.1	SAR Test Exclusion Consider Table	38
10	TEST RESULTS	41
10.1	WIFI 2.4GH	41
10.2	WIFI 5GHz.....	41
11	SAR Measurement Variability	43
12	SIMULTANEOUS TRANSMISSION.....	44
12.1	Simultaneous Transmission Mode Consider	44
12.2	Estimated SAR Calculation.....	44
12.3	Sum SAR of Simultaneous Transmission	45
13	TEST EQUIPMENTS LIST	46
ANNEX A	SIMULATING LIQUID VERIFICATION RESULT	47
ANNEX B	SYSTEM CHECK RESULT	48
ANNEX C	TEST DATA.....	59
ANNEX D	EUT EXTERNAL PHOTOS	67
ANNEX E	SAR TEST SETUP PHOTOS	67
ANNEX F	CALIBRATION REPORT.....	68
F.1	E-Field Probe	68
F.2	2450MHz Dipole	78

F.3	Waveguide	89
F.4	SATIMO Dipole	102

1 GENERAL INFORMATION

1.1 Identification of the Testing Laboratory

Company Name	Shenzhen BALUN Technology Co., Ltd.
Address	Block B, 1st FL, Baisha Science and Technology Park, Shahe Xi Road, Nanshan District, Shenzhen, Guangdong Province, P. R. China
Phone Number	+86 755 6685 0100
Fax Number	+86 755 6182 4271

1.2 Identification of the Responsible Testing Location

Test Location	Shenzhen BALUN Technology Co., Ltd.
Address	Block B, 1st FL, Baisha Science and Technology Park, Shahe Xi Road, Nanshan District, Shenzhen, Guangdong Province, P. R. China
Accreditation Certificate	<p>The laboratory has been listed by Industry Canada to perform electromagnetic emission measurements. The recognition numbers of test site are 11524A-1.</p> <p>The laboratory has been listed by US Federal Communications Commission to perform electromagnetic emission measurements. The recognition numbers of test site are 832625.</p> <p>The laboratory is a testing organization accredited by China National Accreditation Service for Conformity Assessment (CNAS) according to ISO/IEC 17025. The accreditation certificate number is L6791.</p>
Description	All measurement facilities used to collect the measurement data are located at Block B, FL 1, Baisha Science and Technology Park, Shahe Xi Road, Nanshan District, Shenzhen, Guangdong Province, P. R. China 518055

1.3 Test Environment Condition

Ambient Temperature	20 to 23°C
Ambient Relative Humidity	37 to 48%
Ambient Pressure	100 to 102KPa

1.4 Announce

- (1) The test report reference to the report template version v2.2.
- (2) The test report is invalid if not marked with the signatures of the persons responsible for preparing and approving the test report.
- (3) The test report is invalid if there is any evidence and/or falsification.
- (4) The results documented in this report apply only to the tested sample, under the conditions and modes of operation as described herein.
- (5) This document may not be altered or revised in any way unless done so by BALUN and all revisions are duly noted in the revisions section.
- (6) Content of the test report, in part or in full, cannot be used for publicity and/or promotional purposes without prior written approval from the laboratory.

2 PRODUCT INFORMATION

2.1 Applicant Information

Applicant	Handheld Group AB
Address	Kinnegatan 17, 53133 Lidköping Sweden

2.2 Manufacturer Information

Manufacturer	INTEL MOBILE COMMUNICATIONS
Address	100 Center Point Circle, Suite 200 Columbia, South Carolina, 29210 USA

2.3 Factory Information

Factory	N/A
Address	N/A

2.4 General Description for Equipment under Test (EUT)

EUT Name	Intel Dual Band Wireless-AC 3165
Model Name Under Test	3165NGW
Series Model Name	N/A
Description of Model Name Differentiation	N/A
Hardware Version	IBWHH-210
Software Version	N/A
Dimensions (Approx.)	N/A
Weight (Approx.)	N/A
Network and Wireless connectivity	Bluetooth 3.0, Bluetooth 4.0 Low Energy (BLE), WIFI 802.11a, 802.11b, 802.11g, 802.11n(HT20/40) and 802.11ac, GPS

2.5 Ancillary Equipment

N/A

2.6 Technical Information

The requirement for the following technical information of the EUT was tested in this report:

Operating Mode	2.4G WLAN, 5G WLAN, Bluetooth	
Frequency Range	802.11b/g /n(HT20/HT40)	2400 MHz ~ 2483.5 MHz
	802.11a/ /n(HT20/HT40) /ac(HT20/HT40 /HT80)	5150 MHz ~ 5250 MHz
		5250 MHz ~ 5350 MHz
		5470 MHz ~ 5725 MHz
	Bluetooth	2400 MHz ~ 2483.5 MHz
Antenna Type	WLAN: PIFA Antenna Bluetooth: PIFA Antenna	
Hotspot Function	N/A	
Power Reduction	Not Support	
Exposure Category	General Population/Uncontrolled exposure	
EUT Stage	Portable Device	
Product	Type	
	<input checked="" type="checkbox"/> Production unit	<input type="checkbox"/> Identical prototype

3 SUMMARY OF TEST RESULTS

3.1 Test Standards

No.	Identity	Document Title
1	47 CFR Part 2	Frequency Allocations and Radio Treaty Matters; General Rules and Regulations
2	ANSI/IEEE Std. C95.1-1999	IEEE Standard for Safety Levels with Respect to Human Exposure to Radio Frequency Electromagnetic Fields, 3 kHz to 300 GHz
3	IEEE Std. 1528-2013	Recommended Practice for Determining the Peak Spatial-Average Specific Absorption Rate (SAR) in the Human Head from Wireless Communications Devices: Measurement Techniques
4	FCC KDB 447498 D01 v06	Mobile and Portable Device RF Exposure Procedures and Equipment Authorization Policies
5	FCC KDB 865664 D01 v01r04	SAR Measurement 100 MHz to 6 GHz
6	FCC KDB 865664 D02 v01r02	RF Exposure Reporting
7	FCC KDB 616217 D04 SAR for laptop and tablets V01r02	SAR Evaluation Considerations for Laptop, Notebook, Netbook and Table Computer
8	FCC KDB 248227 D01 v02r02	SAR GUIDANCE FOR IEEE 802. (Wi-Fi) TRANSMITTERS

3.2 Device Category and SAR Limit

This device belongs to portable device category because its radiating structure is allowed to be used within 20 centimeters of the body of the user. Limit for General Population/Uncontrolled exposure should be applied for this device, it is 1.6 W/kg as averaged over any 1 gram of tissue.

Table of Exposure Limits:

Body Position	SAR Value (W/Kg)	
	General Population/ Uncontrolled Exposure	Occupational/ Controlled Exposure
Whole-Body SAR (averaged over the entire body)	0.08	0.4
Partial-Body SAR (averaged over any 1 gram of tissue)	1.60	8.0
SAR for hands, wrists, feet and ankles (averaged over any 10 grams of tissue)	4.0	20.0

NOTE:

General Population/Uncontrolled: Locations where there is the exposure of individuals who have no knowledge or control of their exposure. General population/uncontrolled exposure limits are applicable to situations in which the general public may be exposed or in which persons who are exposed as a consequence of their employment may not be made fully aware of the potential for exposure or cannot exercise control over their exposure. Members of the general public would come under this category when exposure is not employment-related; for example, in the case of a wireless transmitter that exposes persons in its vicinity.

Occupational/Controlled: Locations where there is exposure that may be incurred by persons who are aware of the potential for exposure. In general, occupational/controlled exposure limits are applicable to situations in which persons are exposed as a consequence of their employment, who have been made fully aware of the potential for exposure and can exercise control over their exposure. This exposure category is also applicable when the exposure is of a transient nature due to incidental passage through a location where the exposure levels may be higher than the general population/uncontrolled limits, but the exposed person is fully aware of the potential for exposure and can exercise control over his or her exposure by leaving the area or by some other appropriate means.

3.3 Test Result Summary

3.3.1 Highest SAR (1 g Value)

Band	Maximum Scaled SAR (W/kg)	Maximum Report SAR (W/kg)
	Body (0mm)	Body (0mm)
2.4G WLAN (antenna A)	0.210	1.423
2.4G WLAN (antenna B)	0.054	
5.2G WLAN (antenna A)	0.513	
5.6G WLAN (antenna A)	1.423	
5.8G WLAN (antenna A)	1.395	
5.3G WLAN (antenna B)	0.779	
5.6G WLAN (antenna B)	0.914	
5.8G WLAN (antenna B)	1.046	
Limits (W/kg)	1.6	
Verdict	Pass	

3.3.2 Highest Simultaneous SAR

Position	Simultaneous Configuration	Simultaneous SAR (W/kg)	Limit (W/kg)	Verdict
Body	5G WLAN Antenna B + Bluetooth	1.154	1.6	Pass

3.4 Test Uncertainty

3.4.1 Measurement uncertainty evaluation for SAR test

The following measurement uncertainty levels have been estimated for tests performed on the EUT as specified in IEEE 1528 This uncertainty represents an expanded uncertainty expressed at approximately the 95% confidence level using a coverage factor of k=2.

Uncertainty Component	Tol (+-%)	Prob. Dist.	Div.	Ci (1g)	Ci (10g)	1g Ui (+-%)	10g Ui (+-%)	V _i
Measurement System								
Probe calibration	5.8	N	1	1	1	5.80	5.80	∞
Axial Isotropy	3.5	R	$\sqrt{3}$	0.7	0.7	1.41	1.41	∞
Hemispherical Isotropy	5.9	R	$\sqrt{3}$	0.7	0.7	2.38	2.38	∞
Boundary effect	1.0	R	$\sqrt{3}$	1	1	0.58	0.58	∞
Linearity	4.7	R	$\sqrt{3}$	1	1	2.71	2.71	∞
System detection limits	1.0	R	$\sqrt{3}$	1	1	0.58	0.58	∞
Readout Electronics	0.5	N	1	1	1	0.50	0.50	∞
Response Time	0.0	R	$\sqrt{3}$	1	1	0.00	0.00	∞
Integration Time	1.4	R	$\sqrt{3}$	1	1	0.81	0.81	∞
RF ambient Conditions - Noise	3.0	R	$\sqrt{3}$	1	1	1.73	1.73	∞
RF ambient Conditions - Reflections	3.0	R	$\sqrt{3}$	1	1	1.73	1.73	∞
Probe positioner Mechanical Tolerance	1.4	R	$\sqrt{3}$	1	1	0.81	0.81	∞
Probe positioning with respect to Phantom Shell	1.4	R	$\sqrt{3}$	1	1	0.81	0.81	∞
Extrapolation, interpolation and integration Algorithms for Max. SAR Evaluation	2.3	R	$\sqrt{3}$	1	1	1.33	1.33	∞
Test Sample Related								
Test sample positioning	2.6	N	1	1	1	2.60	2.60	N-1
Device Holder Uncertainty	1.0	N	1	1	1	1.00	1.00	N-1
Output power Variation - SAR drift measurement	5.0	R	$\sqrt{3}$	1	1	2.89	2.89	∞
SAR scaling	2.00	R	$\sqrt{3}$	1	1	1.15	1.15	∞
Phantom and Tissue Parameters								
Phantom Uncertainty (Shape and thickness tolerances)	4.0	R	$\sqrt{3}$	1	1	2.31	2.31	∞
Liquid conductivity (deviation from target values)	2.5	N	$\sqrt{3}$	0.64	0.43	0.92	0.62	∞
Liquid conductivity - measurement uncertainty	5.0	N	1	0.64	0.43	3.20	2.15	M
Liquid permittivity (deviation from target values)	2.5	N	$\sqrt{3}$	0.60	0.49	0.87	0.71	∞
Liquid permittivity - measurement uncertainty	5.0	N	1	0.60	0.49	3.00	2.45	M
Combined Standard Uncertainty		RSS				10.14	9.67	
Expanded Uncertainty (95% Confidence interval)		k				20.29	19.35	

3.4.2 Measurement uncertainty evaluation for system check

This measurement uncertainty budget is suggested by IEEE 1528. The break down of the individual uncertainties is as follows:

Uncertainty Component	Tol (+-%)	Prob. Dist.	Div.	Ci (1g)	Ci (10g)	1g Ui (+-%)	10g Ui (+-%)	Vi
Measurement System								
Probe calibration	5.8	N	1	1	1	5.80	5.80	∞
Axial Isotropy	3.5	R	$\sqrt{3}$	0.7	0.7	1.41	1.41	∞
Hemispherical Isotropy	5.9	R	$\sqrt{3}$	0.7	0.7	2.38	2.38	∞
Boundary effect	1.0	R	$\sqrt{3}$	1	1	0.58	0.58	∞
Probe Linearity	4.7	R	$\sqrt{3}$	1	1	2.71	2.71	∞
System detection limits	1.0	R	$\sqrt{3}$	1	1	0.58	0.58	∞
Readout Electronics	0.5	N	1	1	1	0.50	0.50	∞
Reponse Time	0.0	R	$\sqrt{3}$	1	1	0.00	0.00	∞
Integration Time	1.4	R	$\sqrt{3}$	1	1	0.81	0.81	∞
RF ambient Conditions - Noise	3.0	R	$\sqrt{3}$	1	1	1.73	1.73	∞
RF ambient Conditions - Reflections	3.0	R	$\sqrt{3}$	1	1	1.73	1.73	∞
Probe positioner Mechanical Tolerance	1.4	R	$\sqrt{3}$	1	1	0.81	0.81	∞
Probe positioning with respect to Phantom Shell	1.4	R	$\sqrt{3}$	1	1	0.81	0.81	∞
Extrapolation, interpolation and integration Algorithms for Max. SAR Evaluation	2.3	R	$\sqrt{3}$	1	1	1.33	1.33	∞
Dipole								
Deviation of experimental dipole	5.5	R	$\sqrt{3}$	1	1	3.20	3.20	∞
Dipole axis to liquid distance	2.0	R	1	1	1	1.20	1.20	∞
Power drift	4.7	R	$\sqrt{3}$	1	1	2.70	2.70	∞
Phantom and Tissue Parameters								
Phantom Uncertainty (Shape and thickness tolerances)	4.0	R	$\sqrt{3}$	1	1	2.31	2.31	∞
Liquid conductivity (deviation from target values)	2.5	N	$\sqrt{3}$	0.64	0.43	0.92	0.62	∞
Liquid conductivity - measurement uncertainty	5.0	N	1	0.64	0.43	3.20	2.15	M
Liquid permittivity (deviation from target values)	2.5	N	$\sqrt{3}$	0.60	0.49	0.87	0.71	∞
Liquid permittivity - measurement uncertainty	5.0	N	1	0.60	0.49	3.00	2.45	M
Combined Standard Uncertainty		RSS				10.22	9.75	
Expanded Uncertainty (95% Confidence interval)		k				20.44	19.50	

4 SAR MEASUREMENT SYSTEM

4.1 Definition of Specific Absorption Rate (SAR)

SAR is related to the rate at which energy is absorbed per unit mass in an object exposed to a radio field. The SAR distribution in a biological body is complicated and is usually carried out by experimental techniques or numerical modeling. The standard recommends limits for two tiers of groups, occupational/controlled and general population/uncontrolled, based on a person's awareness and ability to exercise control over his or her exposure. In general, occupational / controlled exposure limits are higher than the limits for general population /uncontrolled.

The SAR definition is the time derivative (rate) of the incremental energy (dW) absorbed by (dissipated in) an incremental mass (dm) contained in a volume element (dv) of a given density (ρ). The equation description is as below:

$$\text{SAR} = \frac{d}{dt} \left(\frac{dW}{dm} \right) = \frac{d}{dt} \left(\frac{dW}{\rho dv} \right)$$

SAR is expressed in units of Watts per kilogram (W/kg) SAR measurement can be related to the electrical field in the tissue by

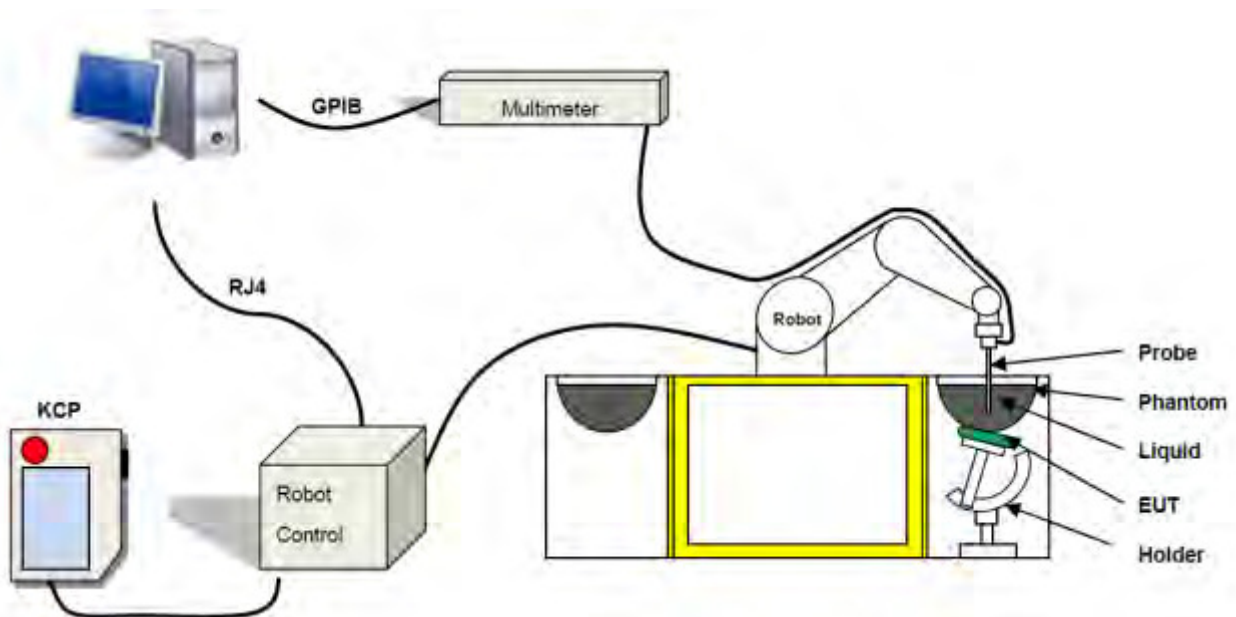
$$\text{SAR} = \frac{\sigma E^2}{\rho}$$

Where: σ is the conductivity of the tissue,

ρ is the mass density of the tissue and E is the RMS electrical field strength.

4.2 SATIMO SAR System

4.2.1 SATIMO SAR System Diagram



These measurements were performed with the automated near-field scanning system OPENSAR from SATIMO. The system is based on a high precision robot (working range: 850 mm), which positions the probes with a positional repeatability of better than ± 0.02 mm. Special E- and H-field probes have been developed for measurements close to material discontinuity, the sensors of which are directly loaded with a Schottky diode and connected via highly resistive lines to the data acquisition unit.

The SAR measurements were conducted with dosimetric probe (manufactured by SATIMO), designed in the classical triangular configuration and optimized for dosimetric evaluation. The probe has been calibrated according to the procedure described in SAR standard with accuracy of better than $\pm 10\%$. The spherical isotropy was evaluated with the procedure described in SAR standard and found to be better than ± 0.25 dB. The phantom used was the SAM Phantom as described in FCC supplement C, IEEE P1528.

4.2.2 Robot

The SATIMO SAR system uses the high precision robots from KUKA. For the 6-axis controller system, the robot controller version (KUKA) from KUKA is used. The KUKA robot series have many features that are important for our application:



- High precision (repeatability ± 0.035 mm)
- High reliability (industrial design)
- Jerk-free straight movements
- Low ELF interference (the closed metallic construction shields against motor control fields)

4.2.3 E-Field Probe

For the measurements the Specific Dosimetric E-Field Probe SN 34/15 EPGO 265 with following specifications is used

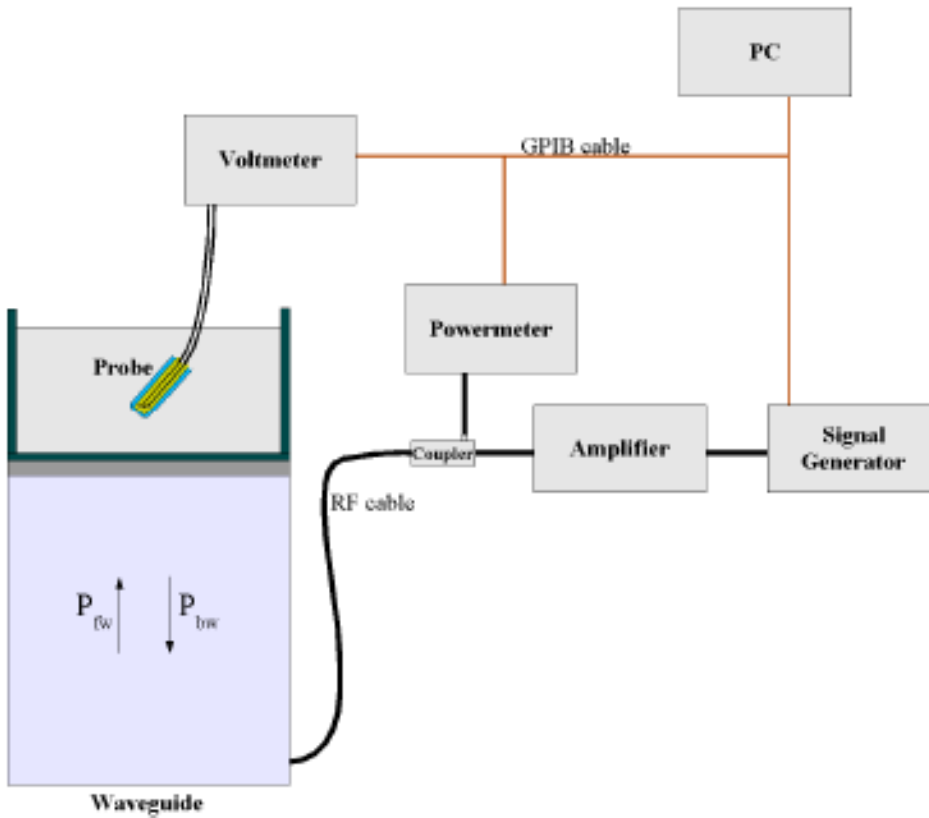
- Dynamic range: 0.01-100 W/kg
- Tip Diameter : 2.5 mm
- Lower detection limit : 7 mW/kg
(repeatability better than ± 1 mm)
- Probe linearity: ± 0.07 dB
- Calibration range: 450 MHz to 5800 MHz for head & body simulating liquid.

Angle between probe axis (evaluation axis) and surface normal line: less than 30°



E-Field Probe Calibration Process

Probe calibration is realized, in compliance with CENELEC EN 62209-1/-2 and IEEE 1528 std, with CALISAR, Antenna proprietary calibration system. The calibration is performed with the IEC62209-1/2 annexe technique using reference guide at the five frequencies.



$$SAR = \frac{4(P_{fw} - P_{bw})}{ab\sigma} \cos^2 \left(\pi \frac{y}{a} \right) c^{(2\pi/\sigma)}$$

Where :

- P_{fw} = Forward Power
- P_{bw} = Backward Power
- a and b = Waveguide Dimensions
- l = Skin Depth

Keithley configuration

Rate = Medium; Filter = ON; RDGS = 10; FILTER TYPE = MOVING AVERAGE; RANGE AUTO After each calibration, a SAR measurement is performed on a validation dipole and compared with a NPL calibrated probe, to verify it.

The calibration factors, CF(N), for the 3 sensors corresponding to dipole 1, dipole 2 and dipole 3 are:

$$CF(N)=SAR(N)/V_{lin}(N) \quad (N=1,2,3)$$

The linearised output voltage $V_{lin}(N)$ is obtained from the displayed output voltage $V(N)$ using

$$V_{lin}(N)=V(N)*(1+V(N)/DCP(N)) \quad (N=1,2,3)$$

Where the DCP is the diode compression point in mV.

4.2.4 Phantoms

For the measurements the Specific Anthropomorphic Mannequin (SAM) defined by the IEEE SCC-34/SC2 group is used. The phantom is a polyurethane shell integrated in a wooden table. The thickness of the phantom amounts to 2mm +/- 0.2mm. It enables the dosimetric evaluation of left and right phone usage and includes an additional flat phantom part for the simplified performance check. The phantom set-up includes a cover, which prevents the evaporation of the liquid.

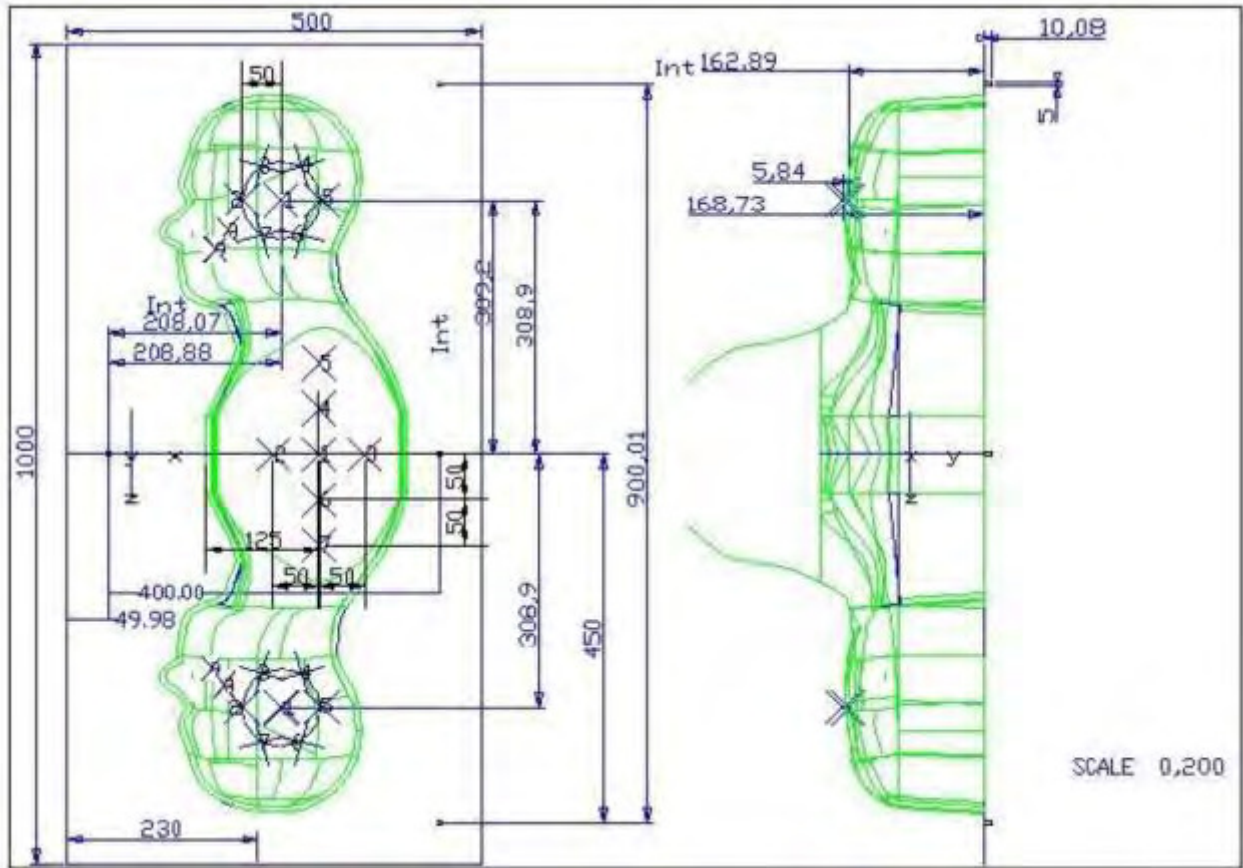
Photo of Phantom SN 30/13 SAM103



Photo of Phantom SN 30/13 SAM104



Serial Number	Positionner Material	Permittivity	Loss Tangent
SN 30/13 SAM103	Gelcoat with fiberglass	3.4	0.02
SN 30/13 SAM104	Gelcoat with fiberglass	3.4	0.02



Serial Number	Left Head		Right Head		Flat Part	
SN 30/13 SAM103	2	2.00	2	2.03	1	2.09
	3	2.02	3	2.05	2	2.10
	4	2.04	4	2.04	3	2.09
	5	2.04	5	2.07	4	2.11
	6	2.02	6	2.07	5	2.11
	7	2.01	7	2.09	6	2.09
	8	2.04	8	2.10	7	2.11
	9	2.02	9	2.09	-	-
	SN 30/13 SAM104	2	2.05	2	2.06	1
3		2.08	3	2.03	2	2.03
4		2.05	4	2.03	3	2.01
5		2.06	5	2.02	4	2.03
6		2.08	6	2.02	5	2.03
7		2.06	7	2.04	6	2.00
8		2.07	8	2.04	7	1.98
9		2.07	9	2.05	-	-

4.2.5 Device Holder

The SAR in the phantom is approximately inversely proportional to the square of the distance between the source and the liquid surface. For a source at 5 mm distance, a positioning uncertainty of ± 0.5 mm would produce a SAR uncertainty of ± 20 %. Accurate device positioning is therefore crucial for accurate and repeatable measurements. The positions in which the devices must be measured are defined by the standards.

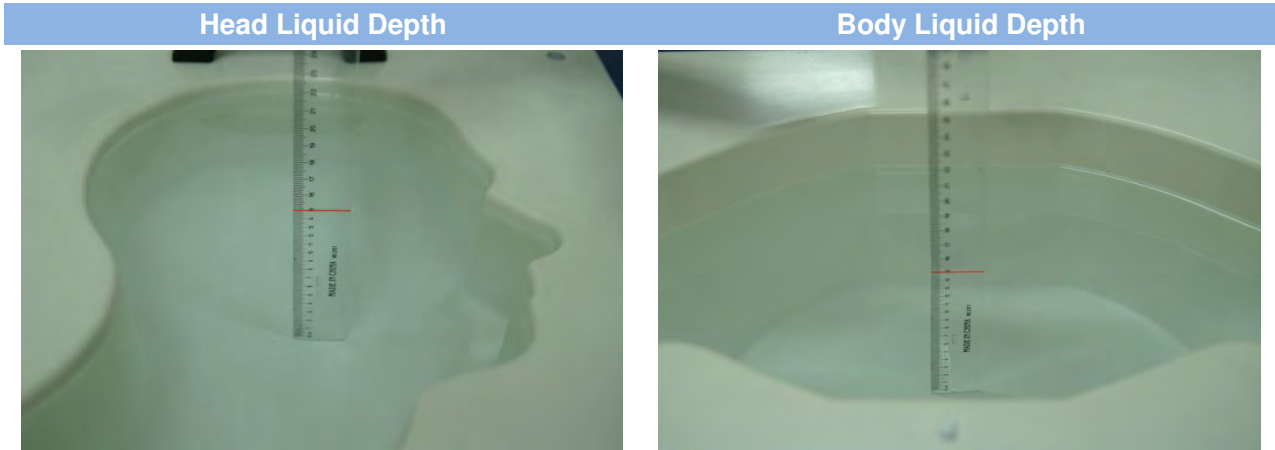


Serial Number	Holder Material	Permittivity	Loss Tangent
SN 25/13 MSH87	Deirin	3.7	0.005
SN 25/13 MSH88	Deirin	3.7	0.005

The positioning system allows obtaining cheek and tilting position with a very good accuracy. In compliance with CENELEC, the tilt angle uncertainty is lower than 1° .

4.2.6 Simulating Liquid

For SAR measurement of the field distribution inside the phantom, the phantom must be filled with homogeneous tissue simulating liquid to a depth of at least 15 cm. For head SAR testing, the liquid height from the ear reference point (ERP) of the phantom to the liquid top surface is larger than 15 cm. For body SAR testing, the liquid height from the center of the flat phantom to the liquid top surface is larger than 15 cm. The nominal dielectric values of the tissue simulating liquids in the phantom and the tolerance of 5%.



The following table gives the recipes for tissue simulating liquid and the theoretical Conductivity/Permittivity.

Head (Reference IEEE1528)								
Frequency (MHz)	Water (%)	Sugar (%)	Cellulose (%)	Salt (%)	Preventol (%)	DGBE (%)	Conductivity σ (S/m)	Permittivity ϵ
750	41.1	57.0	0.2	1.4	0.2	0	0.89	41.9
835	40.3	57.9	0.2	1.4	0.2	0	0.90	41.5
900	40.3	57.9	0.2	1.4	0.2	0	0.97	41.5
1800, 1900, 2000	55.2	0	0	0.3	0	44.5	1.4	40.0
2450	55.0	0	0	0.1	0	44.9	1.80	39.2
2600	54.9	0	0	0.1	0	45.0	1.96	39.0
Frequency(MHz)	Water (%)	Hexyl Carbitol (%)			Triton X-100 (%)		Conductivity σ (S/m)	Permittivity ϵ
5200	62.52	17.24			17.24		4.66	36.0
5800	62.52	17.24			17.24		5.27	35.3
Body (From instrument manufacturer)								
Frequency (MHz)	Water (%)	Sugar (%)	Cellulose (%)	Salt (%)	Preventol (%)	DGBE (%)	Conductivity σ (S/m)	Permittivity ϵ
750	51.7	47.2	0	0.9	0.1	0	0.96	55.5
835	50.8	48.2	0	0.9	0.1	0	0.97	55.2
900	50.8	48.2	0	0.9	0.1	0	1.05	55.0
1800, 1900, 2000	70.2	0	0	0.4	0	29.4	1.52	53.3
2450	68.6	0	0	0.1	0	31.3	1.95	52.7
2600	68.2	0	0	0.1	0	31.7	2.16	52.5

Frequency(MHz)	Water	DGBE (%)	Salt (%)	Conductivity σ (S/m)	Permittivity ϵ
5200	78.60	21.40	/	5.54	47.86
5800	78.50	21.40	0.1	6.0	48.20

5 SYSTEM VERIFICATION

5.1 Antenna Port Test Requirement

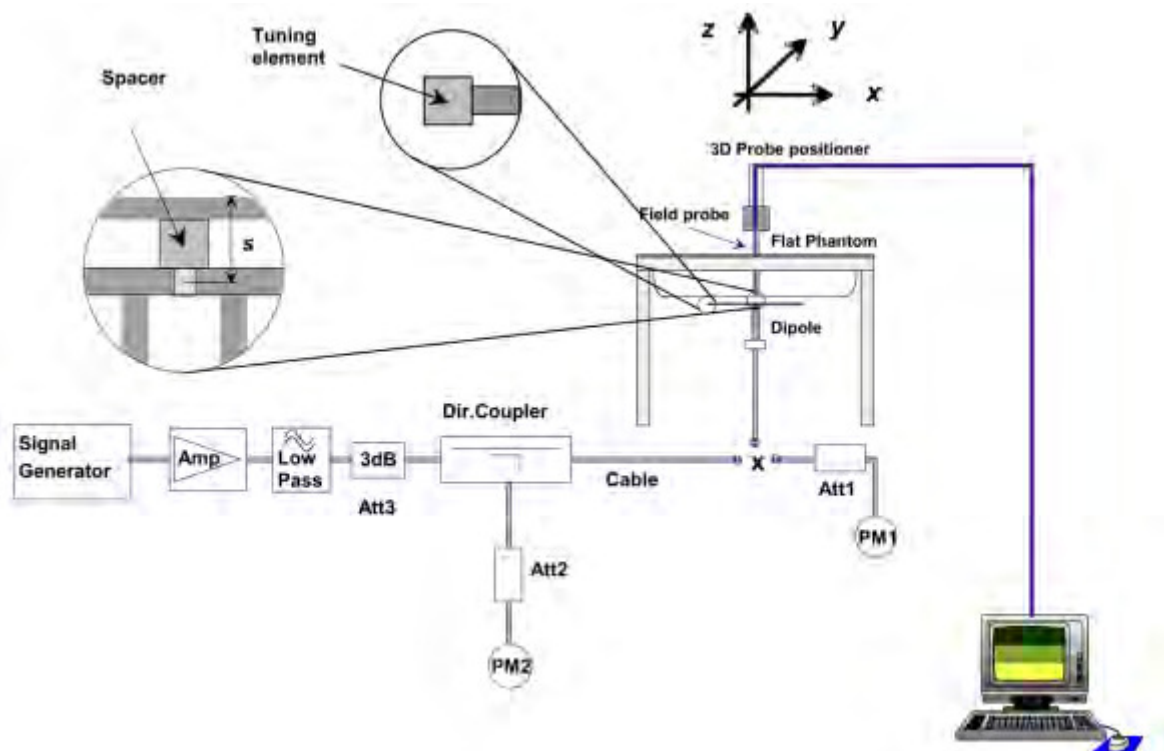
The SATIMO SAR system is equipped with one or more system validation kits. These units together with the predefined measurement procedures within the SATIMO software enable the user to conduct the system performance check and system validation. System validation kit includes a dipole, tripod holder to fix it underneath the flat phantom and a corresponding distance holder.

5.2 Purpose of System Check

The system performance check verifies that the system operates within its specifications. System and operator errors can be detected and corrected. It is recommended that the system performance check be performed prior to any usage of the system in order to guarantee reproducible results. The system performance check uses normal SAR measurements in a simplified setup with a well characterized source. This setup was selected to give a high sensitivity to all parameters that might fail or vary over time. The system check does not intend to replace the calibration of the components, but indicates situations where the system uncertainty is exceeded due to drift or failure.

5.3 System Check Setup

In the simplified setup for system evaluation, the EUT is replaced by a calibrated dipole and the power source is replaced by a continuous wave that comes from a signal generator. The calibrated dipole must be placed beneath the flat phantom section of the SAM twin phantom with the correct distance holder. The distance holder should touch the phantom surface with a light pressure at the reference marking and be oriented parallel to the long side of the phantom. The equipment setup is shown below:



6 EUT TEST POSITION CONFIGURATIONS

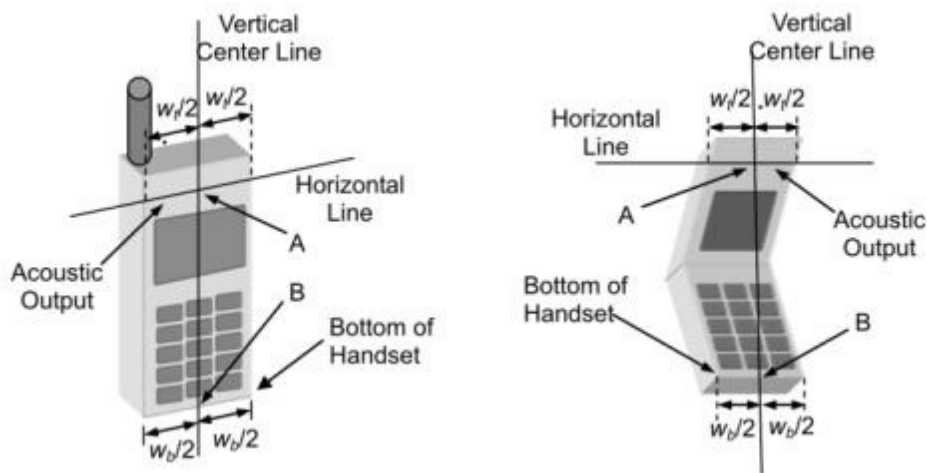
According to KDB 648474 D04 Handset, handsets are tested for SAR compliance in head, body-worn accessory and other use configurations described in the following subsections.

6.1 Head Exposure Conditions

Head exposure is limited to next to the ear voice mode operations. Head SAR compliance is tested according to the test positions defined in IEEE Std 1528-2013 using the SAM phantom illustrated as below.

6.1.1 Define two imaginary lines on the handset

- The vertical center line passes through two points on the front side of the handset - the midpoint of the width w_t of the handset at the level of the acoustic output, and the midpoint of the width w_b of the bottom of the handset.
- The horizontal line is perpendicular to the vertical centerline and passes through the center of the acoustic output. The horizontal line is also tangential to the face of the handset at point A.
- The two lines intersect at point A. Note that for many handsets, point A coincides with the center of the acoustic output; however, the acoustic output may be located elsewhere on the horizontal line. Also note that the vertical centerline is not necessarily parallel to the front face of the handset, especially for clamshell handsets, handsets with flip covers, and other irregularly shaped handsets.



6.1.2 Cheek Position

- To position the device with the vertical center line of the body of the device and the horizontal line crossing the center piece in a plane parallel to the sagittal plane of the phantom. While maintaining the device in this plane, align the vertical center line with the reference plane containing the three ear and mouth reference point (M: Mouth, RE: Right Ear, and LE: Left Ear) and align the center of the ear piece with the line RE-LE.
- To move the device towards the phantom with the ear piece aligned with the line LE-RE until the phone touched the ear. While maintaining the device in the reference plane and maintaining the phone contact with the ear, move the bottom of the phone until any point on the front side is in contact with the cheek of the phantom or until contact with the ear is lost.



6.1.3 Tilted Position

- (a) To position the device in the “cheek” position described above.
- (b) While maintaining the device the reference plane described above and pivoting against the ear, moves it outward away from the mouth by an angle of 15 degrees or until contact with the ear is lost.



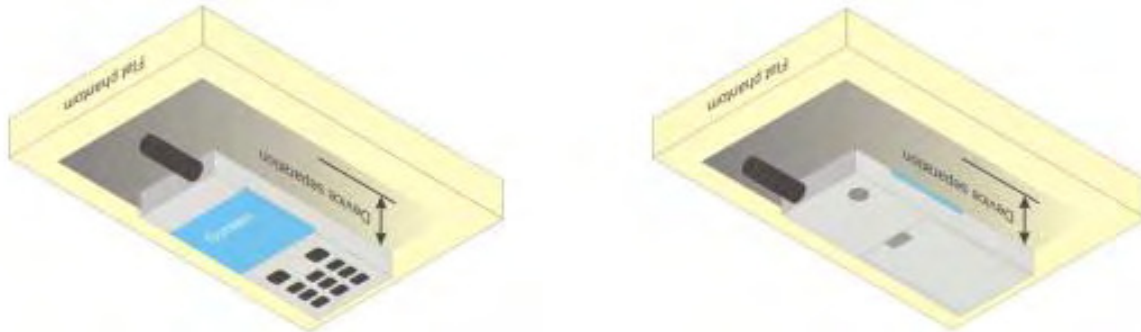
6.2 Body-worn Position Conditions

Body-worn accessory exposure is typically related to voice mode operations when handsets are carried in body-worn accessories. The body-worn accessory procedures in KDB 447498 are used to test for body-worn accessory SAR compliance, without a headset connected to it. This enables the test results for such configuration to be compatible with that required for hotspot mode when the body-worn accessory test separation distance is greater than or equal to that required for hotspot mode. When the reported SAR for a body-worn accessory, measured without a headset connected to the handset, is $> 1.2 \text{ W/kg}$, the highest reported SAR configuration for that wireless mode and frequency band should be repeated for that body-worn accessory with a headset attached to the handset.

Body-worn accessories that do not contain metallic or conductive components may be tested according to worst-case exposure configurations, typically according to the smallest test separation distance required for the group of body-worn accessories with similar operating and exposure characteristics. All body-worn accessories containing metallic components are tested in conjunction with the host device.

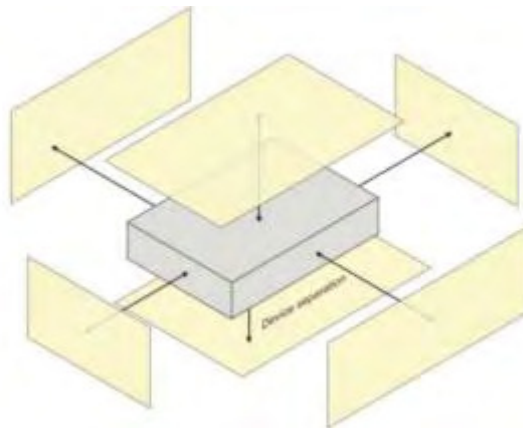
Body-worn accessory SAR compliance is based on a single minimum test separation distance for all wireless and operating modes applicable to each body-worn accessory used by the host, and according to the relevant voice and/or data mode transmissions and operations. If a body-worn accessory supports voice only operations in its normal and expected use conditions, testing of data mode for body-worn compliance is not required. A conservative minimum test separation distance for supporting off-the-shelf body-worn accessories that may be acquired by

users of consumer handsets is used to test for body-worn accessory SAR compliance. This distance is determined by the handset manufacturer, according to the requirements of Supplement C 01-01. Devices that are designed to operate on the body of users using lanyards and straps, or without requiring additional body-worn accessories, will be tested using a conservative minimum test separation distance ≤ 5 mm to support compliance.



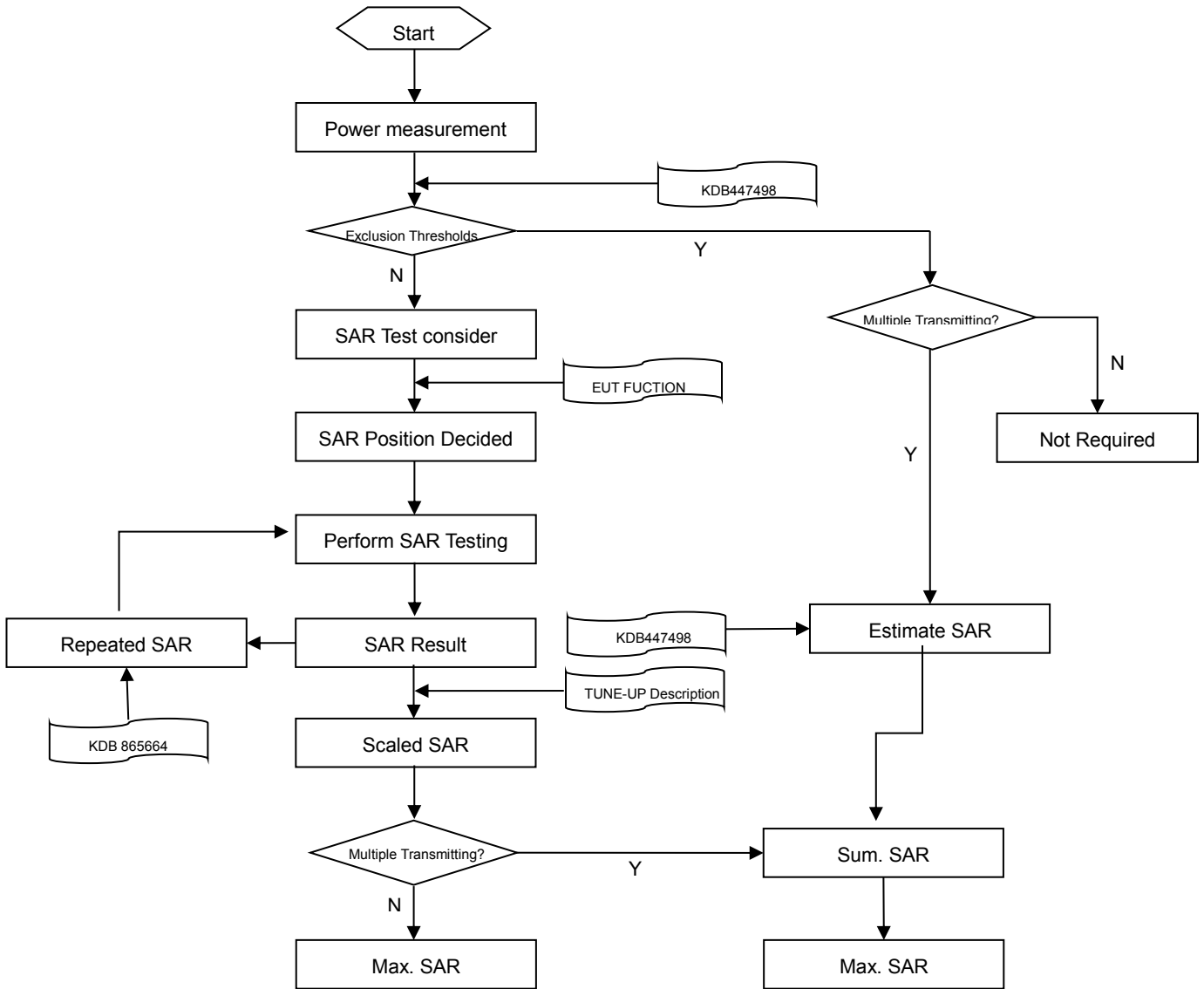
6.3 Hotspot Mode Exposure Position Conditions

For handsets that support hotspot mode operations, with wireless router capabilities and various web browsing functions, the relevant hand and body exposure conditions are tested according to the hotspot SAR procedures in KDB 941225. A test separation distance of 10 mm is required between the phantom and all surfaces and edges with a transmitting antenna located within 25 mm from that surface or edge. When the form factor of a handset is smaller than 9 cm x 5 cm, a test separation distance of 5 mm (instead of 10 mm) is required for testing hotspot mode. When the separation distance required for body-worn accessory testing is larger than or equal to that tested for hotspot mode, in the same wireless mode and for the same surface of the phone, the hotspot mode SAR data may be used to support body-worn accessory SAR compliance for that particular configuration (surface).



7 SAR MEASUREMENT PROCEDURES

7.1 SAR Measurement Process Diagram



7.2 SAR Scan General Requirements

Probe boundary effect error compensation is required for measurements with the probe tip closer than half a probe tip diameter to the phantom surface. Both the probe tip diameter and sensor offset distance must satisfy measurement protocols; to ensure probe boundary effect errors are minimized and the higher fields closest to the phantom surface can be correctly measured and extrapolated to the phantom surface for computing 1-g SAR. Tolerances of the post-processing algorithms must be verified by the test laboratory for the scan resolutions used in the SAR measurements, according to the reference distribution functions specified in IEEE Std 1528-2013.

			≤3GHz	>3GHz
Maximum distance from closest measurement point (geometric center of probe sensors) to phantom surface			5±1 mm	$\frac{1}{2} \cdot \delta \cdot \ln(2) \pm 0.5$ mm
Maximum probe angle from probe axis to phantom surface normal at the measurement location			30°±1°	20°±1°
Maximum area scan spatial resolution: Δx Area , Δy Area			≤ 2 GHz: ≤ 15 mm 2 – 3 GHz: ≤ 12 mm	3–4 GHz: ≤ 12 mm 4 – 6 GHz: ≤ 10 mm
			When the x or y dimension of the test device, in the measurement plane orientation, is smaller than the above, the measurement resolution must be ≤ the corresponding x or y dimension of the test device with at least one measurement point on the test device.	
Maximum zoom scan spatial resolution: Δx Zoom , Δy Zoom			≤ 2 GHz: ≤ 8 mm 2 – 3 GHz: ≤ 5 mm*	3–4 GHz: ≤ 5 mm* 4 – 6 GHz: ≤ 4 mm*
Maximum zoom scan spatial resolution, normal to phantom surface	uniform grid: Δz Zoom (n)		≤ 5 mm	3–4 GHz: ≤ 4 mm
				4–5 GHz: ≤ 3 mm
				5–6 GHz: ≤ 2 mm
	graded grid	Δz Zoom (1): between 1st two points closest to phantom surface	≤ 4 mm	3–4 GHz: ≤ 3 mm
Δz Zoom (n>1): between subsequent points		4–5 GHz: ≤ 2.5 mm		
			5–6 GHz: ≤ 2 mm	
			≤ 1.5· Δz Zoom (n-1)	
Minimum zoom scan volume	x, y, z		≥30 mm	3–4 GHz: ≥ 28 mm
				4–5 GHz: ≥ 25 mm
				5–6 GHz: ≥ 22 mm

Note:

- δ is the penetration depth of a plane-wave at normal incidence to the tissue medium; see draft standard IEEE P1528-2011 for details.
- * When zoom scan is required and the reported SAR from the area scan based 1-g SAR estimation procedures of KDB 447498 is ≤ 1.4 W/kg, ≤ 8 mm, ≤ 7 mm and ≤ 5 mm zoom scan resolution may be applied, respectively, for 2 GHz to 3GHz, 3 GHz to 4 GHz and 4 GHz to 6 GHz.

7.3 SAR Measurement Procedure

The following steps are used for each test position

- Establish a call with the maximum output power with a base station simulator. The connection between the mobile and the base station simulator is established via air interface
- Measurement of the local E-field value at a fixed location. This value serves as a reference value for calculating a possible power drift.
- Measurement of the SAR distribution with a grid of 8 to 16mm * 8 to 16 mm and a constant distance to the inner surface of the phantom. Since the sensors cannot directly measure at the inner phantom surface, the values between the sensors and the inner phantom surface are extrapolated. With these values the area of the maximum SAR is calculated by an interpolation scheme.
- Around this point, a cube of 30 * 30 * 30 mm or 32 * 32 * 32 mm is assessed by measuring 5 or 8 * 5 or 8*4 or 5 mm. With these data, the peak spatial-average SAR value can be calculated.

7.4 Area & Zoom Scan Procedures

First Area Scan is used to locate the approximate location(s) of the local peak SAR value(s). The measurement grid within an Area Scan is defined by the grid extent, grid step size and grid offset. Next, in order to determine the EM field distribution in a three-dimensional spatial extension, Zoom Scan is required. The Zoom Scan is performed around the highest E-field value to determine the averaged SAR-distribution over 10 g. Area scan and zoom scan resolution setting follows KDB 865664 D01 quoted below.

When the 1-g SAR of the highest peak is within 2 dB of the SAR limit, additional zoom scans are required for other peaks within 2 dB of the highest peak that have not been included in any zoom scan to ensure there is no increase in SAR.

8 CONDUCTED RF OUTPUT POWER

8.1 WIFI

8.1.1 2.4GWIFI (Antenna A)

Band (GHz)	Mode	Channel	Freq. (MHz)	Conducted power (dBm)	SAR Test Require.
2.4 (2.4~2.4835) (Antenna A)	802.11b	1	2412	14.04	No
		6	2437	14.25	No
		11	2462	14.72	Yes
	802.11g	1	2412	12.60	No
		6	2437	14.43	No
		11	2462	11.32	No
	802.11n(HT20)	1	2412	12.49	No
		6	2437	14.29	No
		11	2462	11.23	No
	802.11n(HT40)	3	2422	12.29	No
		6	2437	13.80	No
		9	2452	11.23	No

8.1.2 2.4G WIFI (Antenna B)

Band (GHz)	Mode	Channel	Freq. (MHz)	Conducted power (dBm)	SAR Test Require.
2.4 (2.4~2.4835) (Antenna B)	802.11b	1	2412	14.31	No
		6	2437	15.24	No
		11	2462	15.26	Yes
	802.11g	1	2412	13.39	No
		6	2437	14.81	No
		11	2462	11.86	No
	802.11n(HT20)	1	2412	13.41	No
		6	2437	14.48	No
		11	2462	15.87	No
	802.11n(HT40)	3	2422	12.35	No
		6	2437	14.38	No
		9	2452	10.71	No

8.1.3 5GWIFI (Antenna A)

Band (GHz)	Mode	Channel	Freq. (MHz)	Conducted Power (dBm)	SAR Test Require.
5.2 (5.15~5.25)	802.11a	36	5180	9.71	No
		44	5220	10.48	No
		48	5240	10.41	No
	802.11n(HT20)	36	5180	10.27	No
		44	5220	11.47	No
		48	5240	11.34	No
	802.11n(HT40)	38	5190	8.18	No
		46	5230	12.31	Yes
	802.11ac(HT20)	36	5180	9.19	No
		44	5220	9.86	No
		48	5240	9.91	No
	802.11ac(HT40)	38	5190	8.09	No
		46	5230	9.02	No
	802.11ac(HT80)	42	5210	9.92	No
	5.3 (5.25~5.35)	802.11a	52	5260	11.37
56			5282	11.58	No
64			5320	8.91	No
802.11n(HT20)		52	5260	11.65	No
		56	5280	11.68	No
		64	5320	7.45	No
802.11n(HT40)		54	5270	11.53	No
		62	5310	8.94	No
802.11ac(HT20)		52	5260	10.05	No
		56	5280	10.08	No
		64	5320	7.38	No
802.11ac(HT40)		54	5270	9.44	No
		62	5310	8.89	No
802.11ac(HT80)		58	5290	10.09	No
5.6 (5.47~5.725)		802.11a	100	5500	9.60
	116		5580	11.29	No
	140		5700	8.56	No
	802.11n(HT20)	100	5500	8.15	No
		116	5580	10.07	No
		140	5700	9.29	No
	802.11n(HT40)	102	5510	9.97	No
		134	5670	12.05	Yes
	802.11ac(HT20)	100	5500	7.99	No
		116	5580	9.77	No
		140	5700	9.01	No
802.11ac(HT40)	102	5510	9.07	No	

		134	5670	10.34	No
	802.11ac(HT80)	106	5530	10.86	No
5.8 (5.725~5.850)	802.11a	149	5745	11.37	No
		157	5785	12.18	No
		165	5825	11.22	No
	802.11n(HT20)	149	5745	12.14	No
		157	5785	12.12	No
		165	5825	12.15	No
	802.11n(HT40)	151	5755	12.36	Yes
		159	5790	11.42	No
	802.11ac(HT20)	149	5745	10.01	No
		157	5785	10.22	No
		165	5825	10.36	No
	802.11ac(HT40)	151	5755	11.01	No
		159	5795	10.00	No
802.11ac(HT80)	155	5775	12.09	No	

8.1.4 5G WIFI (Antenna B)

Band (GHz)	Mode	Channel	Freq. (MHz)	Conducted Power (dBm)	SAR Test Require.
5.2 (5.15~5.25)	802.11a	36	5180	10.16	No
		44	5220	11.51	No
		48	5240	11.67	No
	802.11n(HT20)	36	5180	10.39	No
		44	5220	11.52	No
		48	5240	11.52	No
	802.11n(HT40)	38	5190	9.45	No
		46	5230	12.29	No
	802.11ac(HT20)	36	5180	9.22	No
		44	5220	9.86	No
		48	5240	9.67	No
	802.11ac(HT40)	38	5190	9.32	No
		46	5230	9.71	No
802.11ac(HT80)	42	5210	9.91	No	
5.3 (5.25~5.35)	802.11a	52	5260	11.96	No
		56	5282	12.41	Yes
		64	5320	9.80	No
	802.11n(HT20)	52	5260	11.99	No
		56	5280	12.36	No
		64	5320	9.66	No
	802.11n(HT40)	54	5270	11.92	No
		62	5310	9.89	No

	802.11ac(HT20)	52	5260	9.89	No
		56	5280	9.76	No
		64	5320	8.09	No
	802.11ac(HT40)	54	5270	9.88	No
		62	5310	9.02	No
	802.11ac(HT80)	58	5290	9.92	No
5.6 (5.47~5.725)	802.11a	100	5500	8.77	No
		116	5580	11.49	No
		140	5700	9.94	No
	802.11n(HT20)	100	5500	8.57	No
		116	5580	11.66	No
		140	5700	9.46	No
	802.11n(HT40)	102	5510	8.99	No
		134	5670	12.47	Yes
	802.11ac(HT20)	100	5500	8.22	No
		116	5580	10.02	No
		140	5700	9.32	No
	802.11ac(HT40)	102	5510	8.54	No
		134	5670	9.66	No
	802.11ac(HT80)	106	5530	10.04	No
	5.8 (5.725~5.850)	802.11a	149	5745	11.74
157			5785	11.55	No
165			5825	10.73	No
802.11n(HT20)		149	5745	11.28	No
		157	5785	11.65	No
		165	5825	10.65	No
802.11n(HT40)		151	5755	12.29	Yes
		159	5790	10.68	No
802.11ac(HT20)		149	5745	10.08	No
		157	5785	10.65	No
		165	5825	9.66	No
802.11ac(HT40)		151	5755	10.89	No
		159	5795	10.11	No
802.11ac(HT80)		155	5775	12.13	No

8.2 Bluetooth

Mode	GFSK			$\pi/4$ -DQPSK		
Channel	0	39	78	0	39	78
Frequency (MHz)	2402	2441	2480	2402	2441	2480
Peak Power (dBm)	3.50	3.82	3.98	2.37	2.91	2.87
Mode	8-DPSK			BLE		
Channel	0	39	78	0	19	39
Frequency (MHz)	2402	2441	2480	2402	2440	2480
Peak Power (dBm)	1.60	2.17	2.16	2.03	2.55	2.44

8.3 Rated RF Power Output

Band (GHz)	Mode	Range(dBm)
2.4 (2.4~2.4835) (Antenna A)	802.11b	13.90-14.85
	802.11g	11.20-14.55
	802.11n(HT20)	11.10-14.40
	802.11n(HT40)	11.10-13.90

Band (GHz)	Mode	Range(dBm)
2.4 (2.4~2.4835) (Antenna B)	802.11b	14.20-15.35
	802.11g	11.75-14.90
	802.11n(HT20)	13.30-16.00
	802.11n(HT40)	10.60-14.50

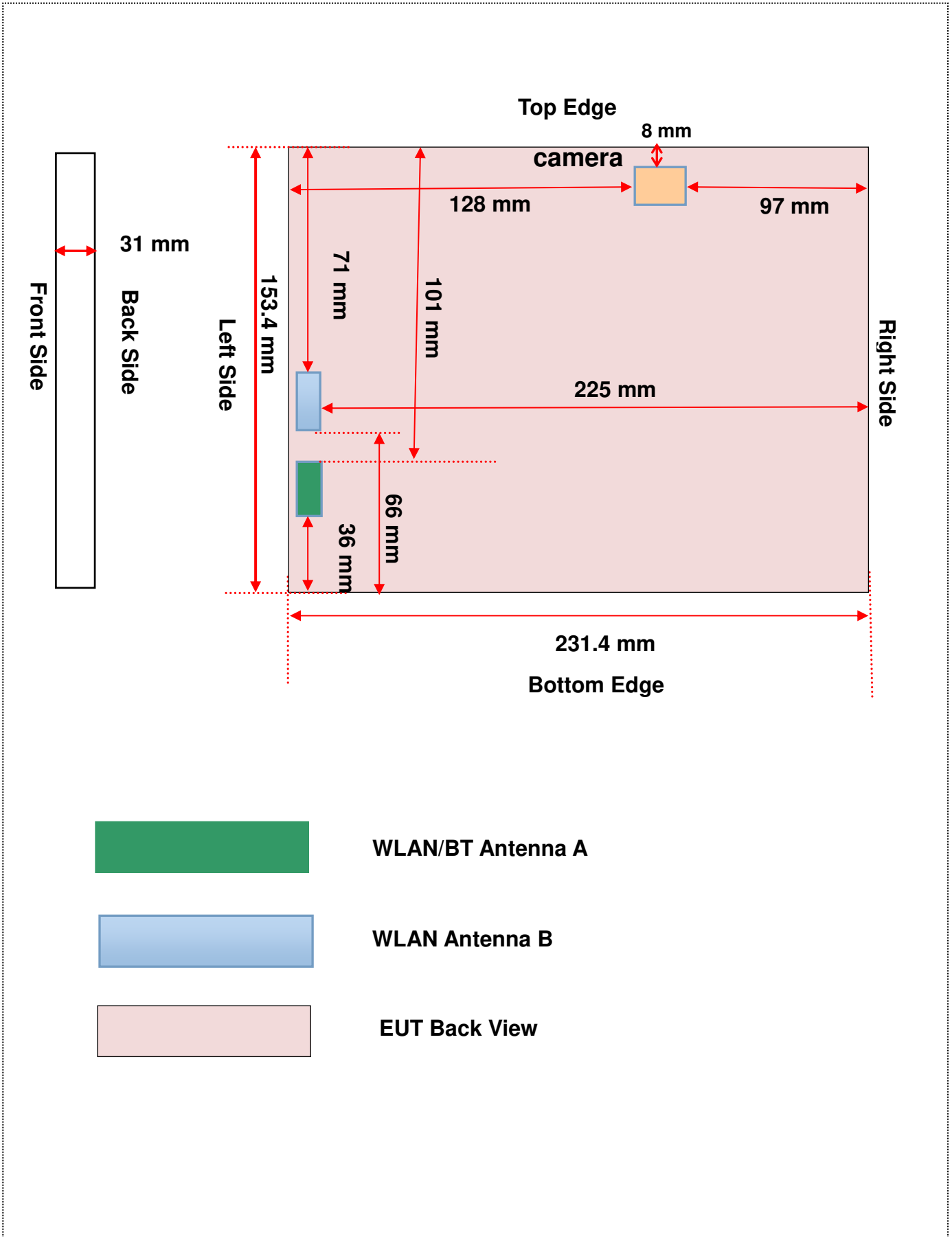
Band (GHz)	Mode	Range(dBm)
Bluetooth	GFSK	3.40-4.10
	$\pi/4$ -DQPSK	2.25-3.00
	8-DPSK	1.50-2.25
	BLE	1.90-2.65

Band (GHz)	Mode	Range(dBm)
5.2 (5.15~5.25) (Antenna A)	802.11a	9.60-10.60
	802.11n(HT20)	10.15-11.60
	802.11n(HT40)	8.10-12.40
	802.11ac(HT20)	9.10-10.00
	802.11ac(HT40)	8.00-9.10
	802.11ac(HT80)	9.80-10.00
5.3 (5.25~5.35) (Antenna A)	802.11a	8.80-11.70
	802.11n(HT20)	7.35-11.80
	802.11n(HT40)	8.80-11.65
	802.11ac(HT20)	7.25-10.15
	802.11ac(HT40)	8.80-9.55
	802.11ac(HT80)	10.00-10.20
5.6 (5.47~5.725) (Antenna A)	802.11a	8.45-11.40
	802.11n(HT20)	8.05-10.20
	802.11n(HT40)	9.85-12.15
	802.11ac(HT20)	7.90-9.90
	802.11ac(HT40)	8.95-10.45
	802.11ac(HT80)	10.75-10.95
5.8 (5.725~5.850) (Antenna A)	802.11a	11.10-12.30
	802.11n(HT20)	12.00-12.25
	802.11n(HT40)	11.30-12.45
	802.11ac(HT20)	9.90-10.45
	802.11ac(HT40)	9.90-11.10
	802.11ac(HT80)	12.00-12.20

Band (GHz)	Mode	Range(dBm)
5.2 (5.15~5.25) (Antenna B)	802.11a	10.05-11.80
	802.11n(HT20)	10.30-11.65
	802.11n(HT40)	9.35-12.40
	802.11ac(HT20)	9.10-10.0
	802.11ac(HT40)	9.20-9.80
	802.11ac(HT80)	9.80-10.00
5.3 (5.25~5.35) (Antenna B)	802.11a	9.70-12.50
	802.11n(HT20)	9.55-12.45
	802.11n(HT40)	9.80-12.00

	802.11ac(HT20)	8.00-10.00
	802.11ac(HT40)	8.90-10.00
	802.11ac(HT80)	9.80-10.05
5.6 (5.47~5.725) (Antenna B)	802.11a	8.65-11.60
	802.11n(HT20)	8.45-11.75
	802.11n(HT40)	8.90-12.55
	802.11ac(HT20)	8.10-10.15
	802.11ac(HT40)	8.45-9.75
	802.11ac(HT80)	9.95-10.15
5.8 (5.725~5.850) (Antenna B)	802.11a	10.60-11.85
	802.11n(HT20)	10.55-11.75
	802.11n(HT40)	10.55-12.40
	802.11ac(HT20)	9.55-10.75
	802.11ac(HT40)	10.00-11.00
	802.11ac(HT80)	12.00-12.25

9 EUT ANTENNA LOCATION SKETCH



9.1 SAR Test Exclusion Consider Table

According with FCC KDB 447498 D01, Appendix A, <SAR Test Exclusion Thresholds for 100 MHz - 6 GHz and ≤ 50 mm> Table, this Device SAR test configurations consider as following :

Band	Mode	Max. Peak Power		Test Position Configurations				
		dBm	mW	Back	Left Edge	Right Edge	Top Edge	Bottom Edge
Antenna A								
WLAN 2.4 G	Distance to User			<5mm	<5mm	225mm	101mm	36 mm
	802.11b	14.85	30.55	Yes	Yes	No	No	No
	802.11g	14.55	28.51	No	No	No	No	No
	802.11n(HT20)	14.40	27.54	No	No	No	No	No
	802.11n(HT40)	13.90	24.55	No	No	No	No	No
Antenna B								
WLAN 2.4 G	Distance to User			<5mm	<5mm	225mm	71mm	66 mm
	802.11b	15.35	34.28	Yes	Yes	No	No	No
	802.11g	14.90	30.90	No	No	No	No	No
	802.11n(HT20)	16.00	39.81	No	No	No	No	No
	802.11n(HT40)	14.50	28.18	No	No	No	No	No
Antenna A								
WLAN 5.2 G	Distance to User			<5mm	<5mm	225mm	101mm	36 mm
	802.11a	10.60	11.48	No	No	No	No	No
	802.11n(HT20)	11.60	14.45	No	No	No	No	No
	802.11n(HT40)	12.40	17.38	Yes	Yes	No	No	No
	802.11ac(HT20)	10.00	10.00	No	No	No	No	No
	802.11ac(HT40)	9.10	8.13	No	No	No	No	No
	802.11ac(HT80)	10.00	10.00	No	No	No	No	No
WLAN 5.3 G	802.11a	11.70	14.79	No	No	No	No	No
	802.11n(HT20)	11.80	15.14	No	No	No	No	No
	802.11n(HT40)	11.65	14.62	No	No	No	No	No
	802.11ac(HT20)	10.15	10.35	No	No	No	No	No
	802.11ac(HT40)	9.55	9.02	No	No	No	No	No
	802.11ac(HT80)	10.20	10.47	No	No	No	No	No
WLAN 5.6 G	802.11a	11.40	13.80	Yes	Yes	No	No	No
	802.11n(HT20)	10.20	10.47	No	No	No	No	No
	802.11n(HT40)	12.15	16.41	Yes	Yes	No	No	No
	802.11ac(HT20)	9.90	9.77	No	No	No	No	No
	802.11ac(HT40)	10.45	11.09	No	No	No	No	No
	802.11ac(HT80)	10.95	12.45	No	No	No	No	No
WLAN 5.8 G	802.11a	12.30	16.98	Yes	Yes	No	No	No
	802.11n(HT20)	12.25	16.79	Yes	Yes	No	No	No
	802.11n(HT40)	12.45	17.58	Yes	Yes	No	No	No
	802.11ac(HT20)	10.45	11.09	No	No	No	No	No

	802.11ac(HT40)	11.10	12.88	No	No	No	No	No
	802.11ac(HT80)	12.20	16.60	Yes	Yes	No	No	No
Antenna B								
WLAN 5.2 G	Distance to User			<5mm	<5mm	225mm	71mm	66 mm
	802.11a	11.80	15.14	No	No	No	No	No
	802.11n(HT20)	11.65	14.62	No	No	No	No	No
	802.11n(HT40)	12.40	17.38	No	No	No	No	No
	802.11ac(HT20)	10.00	10.00	No	No	No	No	No
	802.11ac(HT40)	9.80	9.55	No	No	No	No	No
	802.11ac(HT80)	10.00	10.00	No	No	No	No	No
WLAN 5.3 G	802.11a	12.50	17.78	Yes	Yes	No	No	No
	802.11n(HT20)	12.45	17.58	No	No	No	No	No
	802.11n(HT40)	12.00	15.85	No	No	No	No	No
	802.11ac(HT20)	10.00	10.00	No	No	No	No	No
	802.11ac(HT40)	10.00	10.00	No	No	No	No	No
	802.11ac(HT80)	10.05	10.12	No	No	No	No	No
WLAN 5.6 G	802.11a	11.60	14.45	No	No	No	No	No
	802.11n(HT20)	11.75	14.96	No	No	No	No	No
	802.11n(HT40)	12.55	17.99	Yes	Yes	No	No	No
	802.11ac(HT20)	10.15	10.35	No	No	No	No	No
	802.11ac(HT40)	9.75	9.44	No	No	No	No	No
	802.11ac(HT80)	10.15	10.35	No	No	No	No	No
WLAN 5.8 G	802.11a	11.85	15.31	No	No	No	No	No
	802.11n(HT20)	11.75	14.96	No	No	No	No	No
	802.11n(HT40)	12.40	17.38	Yes	Yes	No	No	No
	802.11ac(HT20)	10.75	11.89	No	No	No	No	No
	802.11ac(HT40)	11.00	12.59	No	No	No	No	No
	802.11ac(HT80)	12.25	16.79	No	No	No	No	No
Antenna A								
Bluetooth	Distance to User			<5mm	<5mm	225mm	101mm	36 mm
	BR/EDR	4.10	2.57	No	No	No	No	No
	BLE	2.65	1.84	No	No	No	No	No

Note:

- Maximum power is the source-based time-average power and represents the maximum RF output power among production units.
- Per KDB 447498 D01, for larger devices, the test separation distance of adjacent edge configuration is determined by the closest separation between the antenna and the user.
- Per KDB 447498 D01, standalone SAR test exclusion threshold is applied; If the distance of the antenna to the user is < 5mm, 5mm is used to determine SAR exclusion threshold
- Per KDB 447498 D01, the 1-g and 10-g SAR test exclusion thresholds for 100 MHz to 6 GHz at test separation distances ≤ 50 mm are determined by:

$$[(\text{max. power of channel, including tune-up tolerance, mW}) / (\text{min. test separation distance, mm})] \cdot [\sqrt{f(\text{GHz})}] \leq 3.0$$
 for 1-g SAR and ≤ 7.5 for 10-g extremity SAR

- a. f (GHz) is the RF channel transmit frequency in GHz
 - b. Power and distance are rounded to the nearest mW and mm before calculation
 - c. The result is rounded to one decimal place for comparison
 - d. For < 50 mm distance, we just calculate mW of the exclusion threshold value (3.0) to do compare.
This formula is $[3.0] / [\sqrt{f(\text{GHz})}] \cdot [(\text{min. test separation distance, mm})] = \text{exclusion threshold of mW}$.
5. Per KDB 447498 D01, at 100 MHz to 6 GHz and for test separation distances > 50 mm, the SAR test exclusion threshold is determined according to the following:
- a. [Threshold at 50 mm in step 1) + (test separation distance - 50 mm)·(f (MHz)/150)] mW, at 100 MHz to 1500 MHz
 - b. [Threshold at 50 mm in step 1) + (test separation distance - 50 mm)·10] mW at > 1500 MHz and ≤ 6 GHz
6. Per KDB 248227 D01, choose the highest output power channel to test SAR and determine further SAR exclusion.8. For each frequency band, testing at higher data rates and higher order modulations is not required when the maximum average output power for each of these configurations is less than 1/4dB higher than those measured at the lowest data rate
7. Per KDB 248227 D01 SAR is not required for the following 2.4 GHz OFDM conditions.
- a. When KDB Publication 447498 D01 SAR test exclusion applies to the OFDM configuration.
 - b. When the highest reported SAR for DSSS is adjusted by the ratio of OFDM to DSSS specified maximum output power and the adjusted SAR is $\leq 1.2 \text{ W/kg}$.
8. Per KDB 248227 D01 SAR is not required for the following U-NII-1 and U-NII-2A bands conditions.
- a. When the same maximum output power is specified for both bands, begin SAR measurement in U-NII-2A band by applying the OFDM SAR requirements. If the highest reported SAR for a test configuration is $\leq 1.2 \text{ W/kg}$, SAR is not required for U-NII-1 band for that configuration (802.11 mode and exposure condition); otherwise, each band is tested independently for SAR.
 - b. When different maximum output power is specified for the bands, begin SAR measurement in the band with higher specified maximum output power. The highest reported SAR for the tested configuration is adjusted by the ratio of lower to higher specified maximum output power for the two bands. When the adjusted SAR is $\leq 1.2 \text{ W/kg}$, SAR is not required for the band with lower maximum output power in that test configuration; otherwise, each band is tested independently for SAR.
9. Subsequent Test Configuration Procedures
- SAR measurement requirements for the remaining 802.11 transmission mode configurations that have not been tested in the initial test configuration are determined separately for each standalone and aggregated frequency band, in each exposure condition, according to the maximum output power specified for production units.
- a. When SAR test exclusion provisions of KDB Publication 447498 D01 are applicable and SAR measurement is not required for the initial test configuration, SAR is also not required for the next highest maximum output power transmission mode subsequent test configuration(s) in that frequency band or aggregated band and exposure configuration.
 - b. When the highest reported SAR for the initial test configuration (when applicable, include subsequent highest output channels), according to the initial test position or fixed exposure position requirements, is adjusted by the ratio of the subsequent test configuration to initial test configuration specified maximum output power and the adjusted SAR is $\leq 1.2 \text{ W/kg}$, SAR is not required for that subsequent test configuration.

10 TEST RESULTS

10.1 WIFI 2.4GH

Mode	Position	Dist. (mm)	Ch.	Freq. (MHz)	Power Drift (%)	1 g Meas. SAR (W/Kg)	Meas. Power (dBm)	Max. tune-up Power(dBm)	Scaling Factor	1 g Scaled SAR (W/Kg)	Meas. No.
Body Antenna A											
802.11 b	Back Side	0	11	2462	3.46	0.056	14.72	14.85	1.03	0.058	/
	Left Edge	0	11	2462	-2.39	0.204	14.72	14.85	1.03	0.210	1#
Body Antenna B											
802.11 b	Back Side	0	11	2462	1.38	0.033	15.26	15.35	1.02	0.034	/
	Left Edge	0	11	2462	-4.95	0.053	15.26	15.35	1.02	0.054	2#

10.2 WIFI 5GHz

Fre. Band	Mode	Position	Dist. (mm)	Ch.	Freq. (MHz)	Power Drift (%)	1 g Meas. SAR (W/Kg)	Meas. Power (dBm)	Max. tune-up Power (dBm)	Scaling Factor	1 g Scaled SAR (W/Kg)	Meas. No.
Body Antenna A												
5.2G	802.11 n (HT-40)	Back Side	0	46	5230	-1.79	0.130	12.31	12.40	1.02	0.133	/
		Left Edge	0	46	5230	0.08	0.502	12.31	12.40	1.02	0.513	3#
5.6G	802.11 n (HT-40)	Back Side	0	134	5670	2.06	0.277	12.05	12.15	1.02	0.283	/
		Left Edge	0	134	5670	-4.36	1.391	12.05	12.15	1.02	1.423	4#
			0	102	5510	-1.77	0.625	9.97	12.15	1.65	1.032	/
	802.11 a	Left Edge	0	116	5580	-1.75	1.345	11.29	11.40	1.03	1.380	/
			0	100	5500	4.59	0.920	9.60	11.40	1.51	1.389	/
			0	140	5700	3.77	0.613	8.56	11.40	1.92	1.179	/
5.8G	802.11 n (HT-40)	Back Side	0	151	5755	-4.53	0.467	12.36	12.45	1.02	0.477	/
		Left Edge	0	151	5755	2.65	1.290	12.36	12.45	1.02	1.317	/
			0	159	5795	0.28	1.028	11.42	12.45	1.27	1.306	/
	802.11 a	Left Edge	0	157	5785	3.16	1.294	12.18	12.30	1.03	1.330	/
			0	149	5745	-1.77	1.126	11.37	12.30	1.24	1.395	5#
			0	165	5825	2.29	1.065	11.22	12.30	1.28	1.363	/
			0	165	5825	0.99	1.133	12.15	12.25	1.02	1.159	/
	802.11 n (HT-20)	Left Edge	0	157	5785	-0.68	1.098	12.12	12.25	1.03	1.131	/
			0	149	5745	-4.69	0.996	12.14	12.25	1.03	1.022	/
			0	155	5775	1.07	1.222	12.09	12.20	1.03	1.253	/
802.11 ac (HT-80)	Left Edge	0	155	5775	1.07	1.222	12.09	12.20	1.03	1.253	/	
		0	155	5775	1.07	1.222	12.09	12.20	1.03	1.253	/	
Body Antenna B												
5.3G	802.11 a	Back Side	0	56	5280	2.59	0.273	12.41	12.50	1.02	0.279	/
		Left Edge	0	56	5280	-3.93	0.763	12.41	12.50	1.02	0.779	6#
5.6G	802.11 n	Back Side	0	134	5670	-3.14	0.226	12.47	12.55	1.02	0.230	/

	(HT-40)	Left Edge	0	134	5670	-2.13	0.897	12.47	12.55	1.02	0.914	7#
			0	102	5510	-3.55	0.396	8.99	12.55	2.27	0.899	/
5.8G	802.11 n (HT-40)	Back Side	0	151	5755	-4.12	0.256	12.29	12.40	1.03	0.263	/
		Left Edge	0	151	5755	-3.57	1.020	12.29	12.40	1.03	1.046	8#
			0	159	5795	-4.48	0.668	10.68	12.40	1.49	0.995	/

11 SAR Measurement Variability

According to KDB 865664 D01, SAR measurement variability was assessed for each frequency band, which is determined by the SAR probe calibration point and tissue-equivalent medium used for the device measurements. When both head and body tissue-equivalent media are required for SAR measurements in a frequency band, the variability measurement procedures should be applied to the tissue medium with the highest measured SAR, using the highest measured SAR configuration for that tissue-equivalent medium. Alternatively, if the highest measured SAR for both head and body tissue-equivalent media are ≤ 1.45 W/kg and the ratio of these highest SAR values, i.e., largest divided by smallest value, is ≤ 1.10 , the highest SAR configuration for either head or body tissue-equivalent medium may be used to perform the repeated measurement. These additional measurements are repeated after the completion of all measurements requiring the same head or body tissue-equivalent medium in a frequency band. The test device should be returned to ambient conditions (normal room temperature) with the battery fully charged before it is re-mounted on the device holder for the repeated measurement(s) to minimize any unexpected variations in the repeated results.

SAR repeated measurement procedure:

1. When the highest measured SAR is < 0.80 W/kg, repeated measurement is not required.
2. When the highest measured SAR is ≥ 0.80 W/kg, repeat that measurement once.
3. If the ratio of largest to smallest SAR for the original and first repeated measurements is > 1.20 , or when the original or repeated measurement is ≥ 1.45 W/kg, perform a second repeated measurement.
4. If the ratio of largest to smallest SAR for the original, first and second repeated measurements is > 1.20 , and the original, first or second repeated measurement is ≥ 1.5 W/kg, perform a third repeated measurement.

Frequency Band (MHz)	Wireless Band	RF Exposure Conditions	Test Position	Highest Measured SAR (W/kg)	Repeated SAR (Yes/No)	Highest Measured SAR (W/kg)	Largest to Smallest SAR Ratio
Body Antenna A							
5600	802.11 n (HT-40)	Body	Left Edge	1.391	Yes	1.339	1.04
	802.11 a	Body	Left Edge	1.345	Yes	1.302	1.03
	802.11 n (HT-20)	Body	Left Edge	1.106	Yes	1.058	1.04
5800	802.11 n (HT-40)	Body	Left Edge	1.290	Yes	1.254	1.02
	802.11 a	Body	Left Edge	1.294	Yes	1.264	1.03
	802.11 n (HT-20)	Body	Left Edge	1.133	Yes	1.106	1.02
	802.11 ac (HT-80)	Body	Left Edge	1.222	Yes	1.182	1.03
Body Antenna B							
5600	802.11 n (HT-40)	Body	Left Edge	0.897	Yes	0.861	1.04
5800	802.11 n (HT-40)	Body	Left Edge	1.020	Yes	0.993	1.03
Note: The ratio of largest to smallest SAR for the original and first repeated measurements is < 1.20 , the second repeated measurement is not required.							

12 SIMULTANEOUS TRANSMISSION

Simultaneous transmission SAR test exclusion is determined for each operating configuration and exposure condition according to the reported standalone SAR of each applicable simultaneous transmitting antenna. When the sum of SAR 1g of all simultaneously transmitting antennas in an operating mode and exposure condition combination is within the SAR limit (SAR 1g 1.6 W/kg), the simultaneous transmission SAR is not required. When the sum of SAR 1g is greater than the SAR limit (SAR 1g 1.6 W/kg), SAR test exclusion is determined by the SAR to Peak Location Ratio (SPLSR).

12.1 Simultaneous Transmission Mode Consider

NO.	Mode	WLAN Antenna B & 2.4G Bluetooth	
		Body	
1	2.4G WLAN Antenna B	+ Bluetooth	
2	5G WLAN Antenna B	+ Bluetooth	

Note:

1. The WLAN Antenna A and WLAN Antenna B can't transmits simultaneously
2. The Bluetooth and WLAN Antenna A share the same antenna, can't transmitting together.
3. Only WLAN Antenna B and Bluetooth can transmit simultaneously

12.2 Estimated SAR Calculation

According to KDB 447498 D01 when standalone SAR test exclusion applies to an antenna that transmits simultaneously with other antennas, the standalone SAR was estimated according to following formula to result in substantially conservative SAR values of ≤ 0.4 W/kg to determine simultaneous transmission SAR test exclusion.

$$\text{Estimated SAR} = \frac{\text{Max. Tune Up Power}(mw)}{\text{Min Test Separation Distance}} * \frac{\sqrt{f_{GHz}}}{x} \quad (\text{where } x = 7.5 \text{ for 1-g SAR})$$

If the minimum test separation distance is < 5 mm, a distance of 5 mm is used for estimated SAR calculation. When the test separation distance is > 50 mm, the 0.4 W/kg is used for SAR-1g.

Band	Mode	Position	Antenna To user (mm)	SAR Testing	Max. Tune-up Power (dBm)	Max. Tune-up Power (mW)	Frequency (GHz)	Calculation Distance/Gap (mm)	Estimated SAR (W/kg)
Bluetooth	GFSK	Back Side	5	NO	4.10	2.50	2480	5	0.108
		Left Edge	5	NO	4.10	2.50	2480	5	0.108

12.3 Sum SAR of Simultaneous Transmission

12.3.1 Sum Body SAR of Simultaneous Transmission

Simultaneous Mode	Mode	Max. 1g SAR (W/kg)	1g Sum SAR (W/kg)	SPLSR (Yes/No)
2.4G WLAN Antenna B + Bluetooth	2.4G WLAN Antenna B	0.054	0.162	No
	Bluetooth	0.108		
5G WLAN Antenna B + Bluetooth	5G WLAN Antenna B	1.046	1.154	No
	Bluetooth	0.108		

13 TEST EQUIPMENTS LIST

Description	Manufacturer	Model	Serial No.	Cal. Date	Cal. Due
PC	Dell	N/A	N/A	N/A	N/A
2450MHz Dipole	SATIMO	SID 2450	S/N 25/13 DIP 2G450-251	2015/03/16	2018/03/15
Waveguide	SATIMO	SWG5500	S/N 30/13 DIP WGA24	2015/03/16	2018/03/15
E-Field Probe	MVG	SSE2	S/N 34/15 EPGO 265	2016/09/15	2017/09/14
Antenna	SATIMO	ANTA3	SN 17/13 ZNTA45	N/A	N/A
Phantom1	SATIMO	SAM	SN 30/13 SAM103	N/A	N/A
Phantom2	SATIMO	SAM	SN 30/13 SAM104	N/A	N/A
Dielectric Probe Kit	SATIMO	SCLMP	SN 25/13 OCPG56	2016/07/13	2017/07/12
MultiMeter	Keithley	MultiMeter 2000	4024022	2016/07/13	2017/07/12
Signal Generator	R&S	SMF100A	1167.0000k02/104260	2016/07/13	2017/07/12
Power Meter	Agilent	E4419B	GB40201833	2016/07/13	2017/07/12
Power Sensor	R&S	NRP-Z21	103971	2016/07/13	2017/07/12
Power Amplifier	SATIMO	6552B	22374	N/A	N/A
Wireless Communication Test Set	R&S	CMW 500	138884	2016/07/13	2017/07/12
Network Analyzer	R&S	ZVL-6	101380	2016/07/13	2017/07/12
Attenuator	COM-MW	ZA-S1-31	1305003187	N/A	N/A
Directional coupler	AA-MCS	AAMCS-UDC	000272	N/A	N/A

Note: Per KDB 865664 Dipole SAR Validation Verification, BALUN LAB has adopted 3 years calibration intervals. On annual basis, every measurement dipole has been evaluated and is in compliance with the following criteria:

1. There is no physical damage on the dipole;
2. System validation with specific dipole is within 10% of calibrated value;
3. Return-loss in within 20% of calibrated measurement.

ANNEX A SIMULATING LIQUID VERIFICATION RESULT

The dielectric parameters of the liquids were verified prior to the SAR evaluation using an SCLMP Dielectric Probe Kit.

Date	Fre. (MHz)	Temp. (°C)	Meas. Conductivity(σ) (S/m)	Meas. Permittivity(ϵ)	Target Conductivity(σ) (S/m)	Target Permittivity(ϵ)	Conductivity Tolerance (%)	Permittivity Tolerance (%)
2016.11.15	2450	21.2	1.96	52.31	1.95	52.70	0.51	-0.74
2016.11.16	5200	21.0	5.23	47.99	5.30	49.00	-1.32	-2.06
2016.11.17	5400	20.7	5.43	47.65	5.53	48.70	-1.81	-2.16
2016.11.18	5600	21.3	5.71	47.44	5.77	48.50	-1.04	-2.19
2016.11.20	5800	21.2	6.04	47.21	6.00	48.20	0.67	-2.05

Note: The tolerances limit of Conductivity and Permittivity is $\pm 5\%$.

ANNEX B SYSTEM CHECK RESULT

Comparing to the original SAR value provided by SATIMO, the validation data should be within its specification of 10%(for 1 g).

Date	Freq. (MHz)	Power (mW)	Measured SAR (W/kg)	Normalized SAR (W/kg)	Dipole SAR (W/kg)	Tolerance (%)	Targeted SAR(W/kg)	Tolerance (%)
2016.11.15	2450	100	5.463	54.63	54.70	-0.13	52.40	4.26
2016.11.16	5200	100	15.496	154.96	155.12	-0.10	159.00	-2.54
2016.11.17	5400	100	15.862	158.62	162.06	-2.12	166.40	-4.68
2016.11.18	5600	100	16.746	167.46	167.13	0.20	173.80	-3.65
2016.11.20	5800	100	17.416	174.16	173.19	0.56	181.20	-3.89

Note:

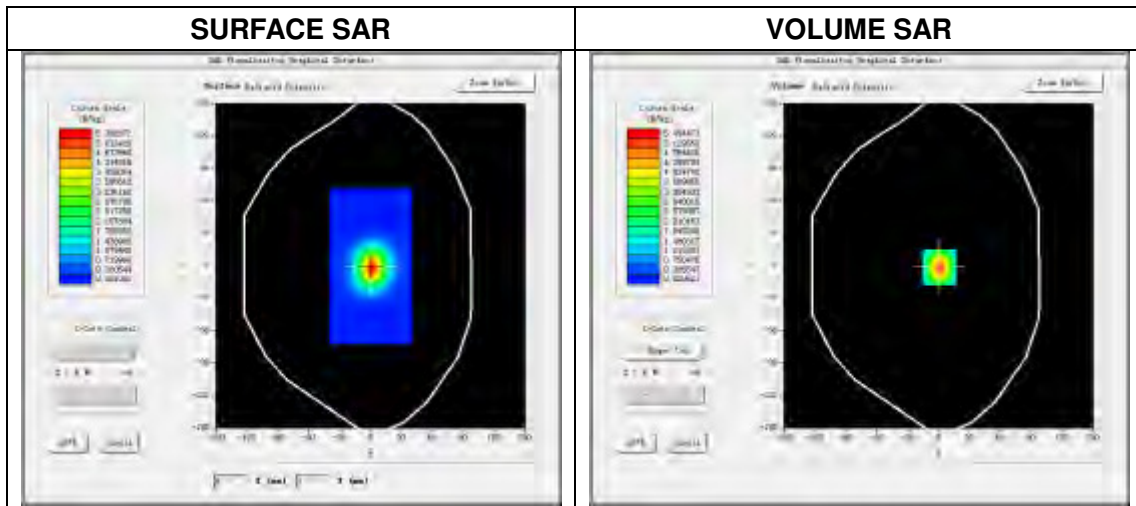
- a) The tolerance limit of System validation is $\pm 10\%$.
- b) Using waveguide to system check for 5200 MHz to 5800 MHz.

System Performance Check Data(2450 MHz Body)

Type: Phone measurement (Complete)
 E-Field Probe: SN 34/15 SSE2 EPGO265
 Area scan resolution: dx=8mm,dy=8mm
 Zoom scan resolution: dx=5mm, dy=5mm, dz=5mm
 Date of measurement: 2016.11.15
 Measurement duration: 19 minutes 53 seconds

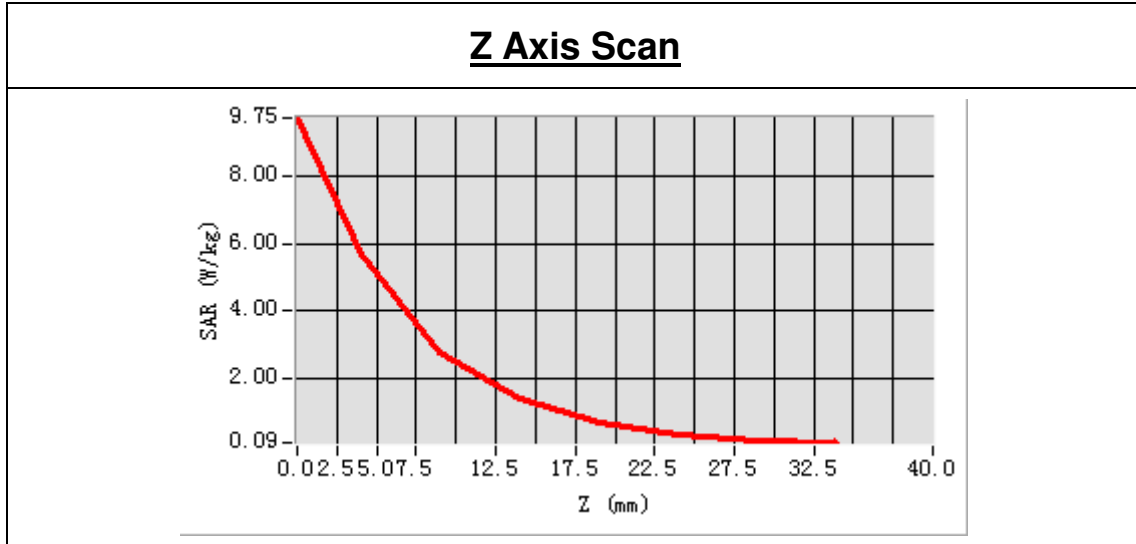
Experimental conditions.

Phantom File	surf_sam_plan.txt
Phantom	Validation plane
Band	2450MHz
Signal	CW
Frequency (MHz)	2450.000000
Relative permittivity (real part)	52.309845
Conductivity (S/m)	1.964598
Power drift (%)	0.200000
Ambient Temperature:	22.4C
Liquid Temperature:	21.2C
ConvF:	2.55
Crest factor:	1:1



Maximum location: X=1.00, Y=-1.00
 SAR Peak: 9.68W/kg

SAR 10g (W/Kg)	2.302133
SAR 1g (W/Kg)	5.462953



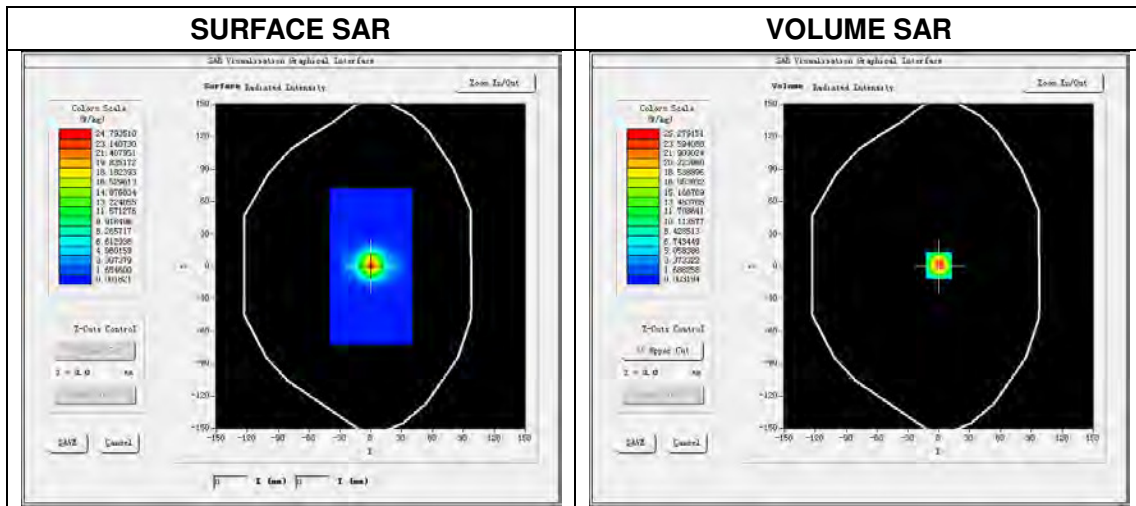
3D screen shot	Hot spot position

System Performance Check Data(5200 MHz Body)

Type: Phone measurement (Complete)
 E-Field Probe: SN 34/15 SSE2 EPGO265
 Area scan resolution: dx=8 mm,dy=8 mm
 Zoom scan resolution: dx=4 mm, dy=4 mm, dz=2 mm
 Date of measurement: 2016.11.16
 Measurement duration: 29 minutes 35 seconds

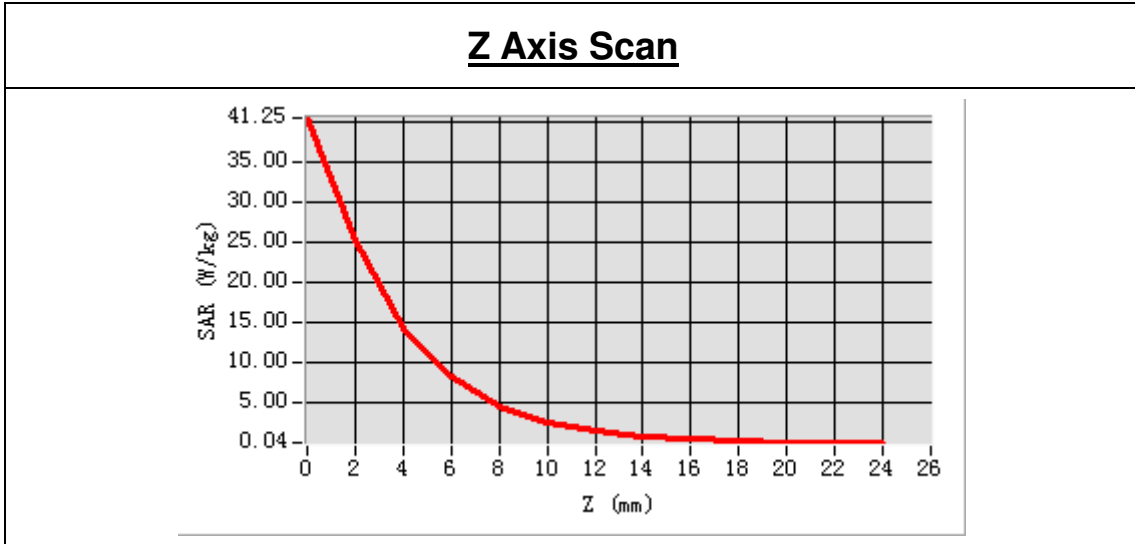
Experimental conditions.

Phantom File	surf_sam_plan.txt
Phantom	Validation plane
Band	5200 MHz
Signal	CW
Frequency (MHz)	5200.000000
Relative permittivity (real part)	47.993245
Conductivity (S/m)	5.225752
Power drift (%)	0.360000
Ambient Temperature:	22.3C
Liquid Temperature:	21.0C
ConvF:	1.85
Crest factor:	1:1



Maximum location: X=0.00, Y=0.00
 SAR Peak: 41.08 W/kg

SAR 10 g (W/Kg)	5.461348
SAR 1 g (W/Kg)	15.496157



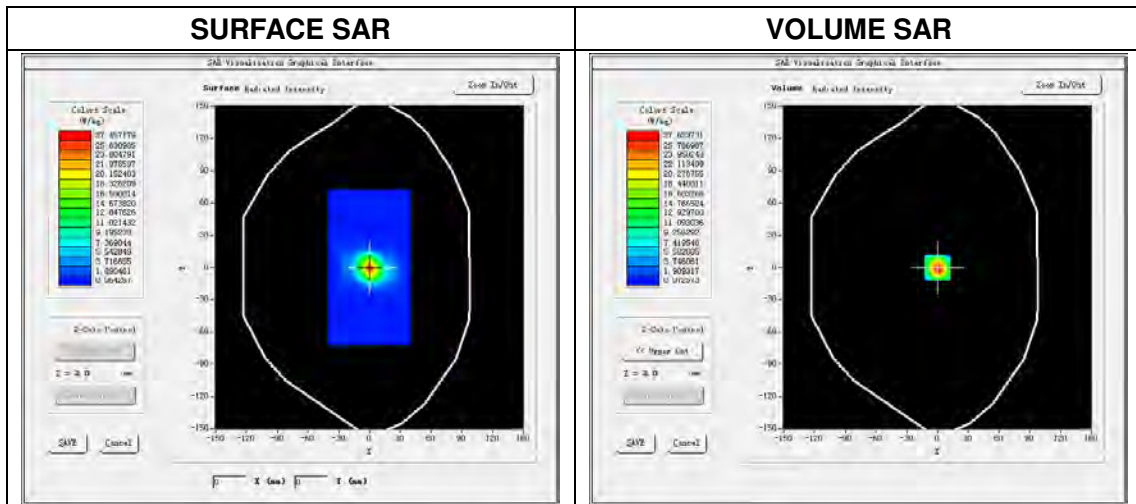
3D screen shot	Hot spot position

System Performance Check Data(5400MHz Body)

Type: Phone measurement (Complete)
 E-Field Probe: SN 34/15 SSE2 EPGO265
 Area scan resolution: dx=8mm,dy=8mm
 Zoom scan resolution: dx=4mm, dy=4mm, dz=2mm
 Date of measurement: 2016.11.17
 Measurement duration: 29 minutes 46 seconds

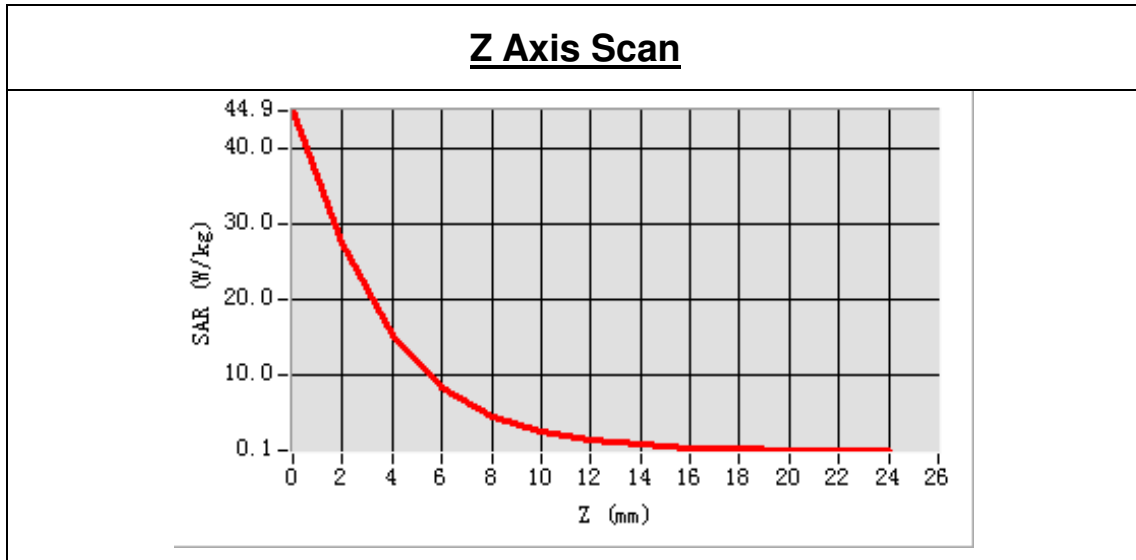
Experimental conditions.

Phantom File	surf_sam_plan.txt
Phantom	Validation plane
Band	5400 MHz
Signal	CW
Frequency (MHz)	5400.000000
Relative permittivity (real part)	47.652898
Conductivity (S/m)	5.432526
Power drift (%)	0.230000
Ambient Temperature:	21.9C
Liquid Temperature:	20.7C
ConvF:	2.11
Crest factor:	1:1



Maximum location: X=0.00, Y=0.00
 SAR Peak: 44.62 W/kg

SAR 10g (W/Kg)	5.652542
SAR 1g (W/Kg)	15.862475



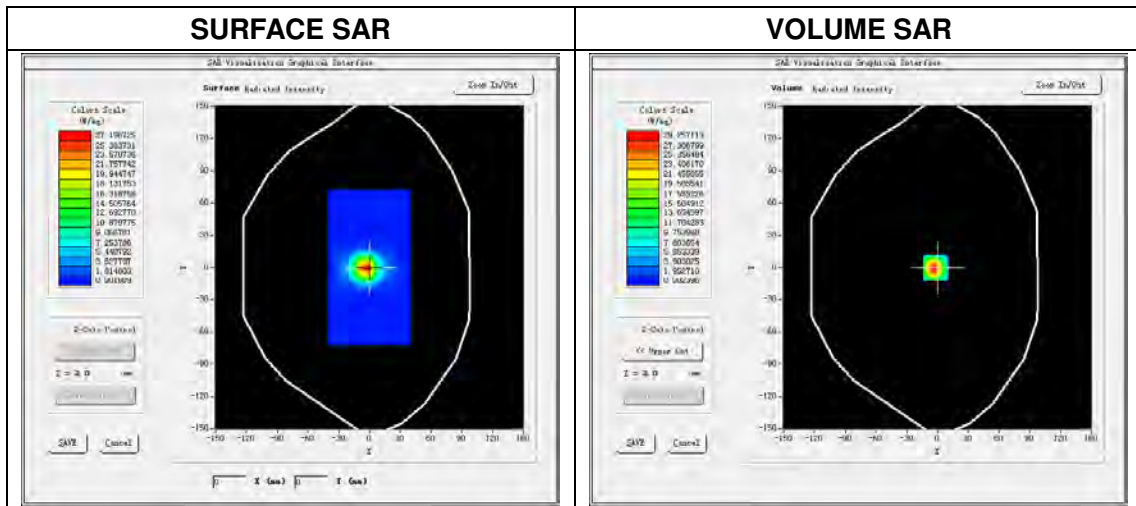
3D screen shot	Hot spot position

System Performance Check Data(5600MHz Body)

Type: Phone measurement (Complete)
 E-Field Probe: SN 34/15 SSE2 EPGO265
 Area scan resolution: dx=8 mm,dy=8 mm
 Zoom scan resolution: dx=4 mm, dy=4 mm, dz=2 mm
 Date of measurement: 2016.11.18
 Measurement duration: 30 minutes 41 seconds

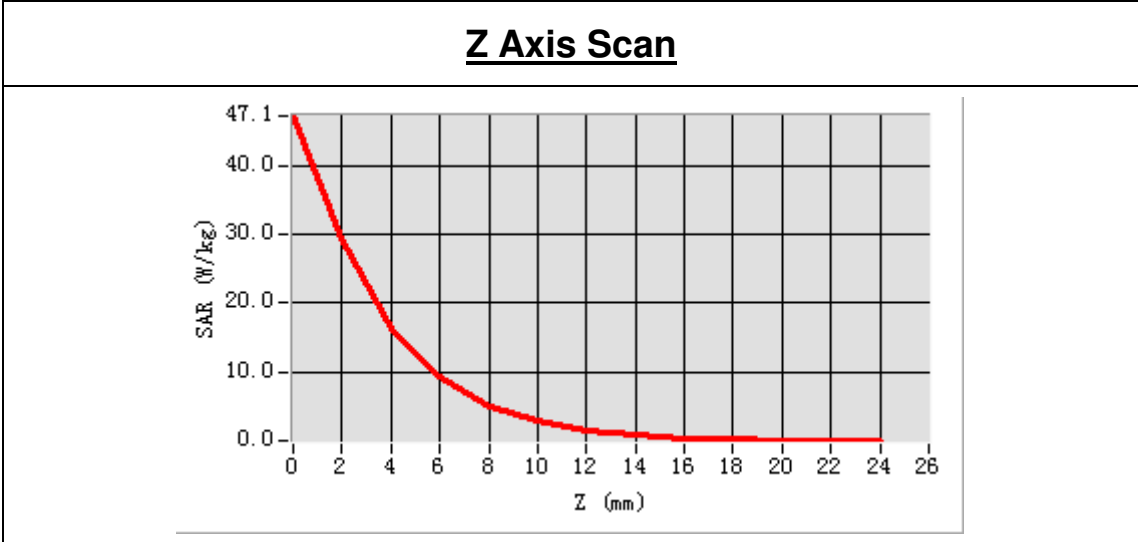
Experimental conditions.

Phantom File	surf_sam_plan.txt
Phantom	Validation plane
Band	5600 MHz
Signal	CW
Frequency (MHz)	5600.000000
Relative permittivity (real part)	47.435761
Conductivity (S/m)	5.707324
Power drift (%)	0.360000
Ambient Temperature:	22.5C
Liquid Temperature:	21.3C
ConvF:	2.15
Crest factor:	1:1



Maximum location: X=-2.00, Y=0.00
 SAR Peak: 45.77 W/kg

SAR 10 g (W/Kg)	5.454146
SAR 1 g (W/Kg)	16.746154



3D screen shot	Hot spot position

System Performance Check Data(5800MHz Body)

Type: Phone measurement (Complete)

E-Field Probe: SN 34/15 SSE2 EPGO265

Area scan resolution: dx=8 mm,dy=8 mm

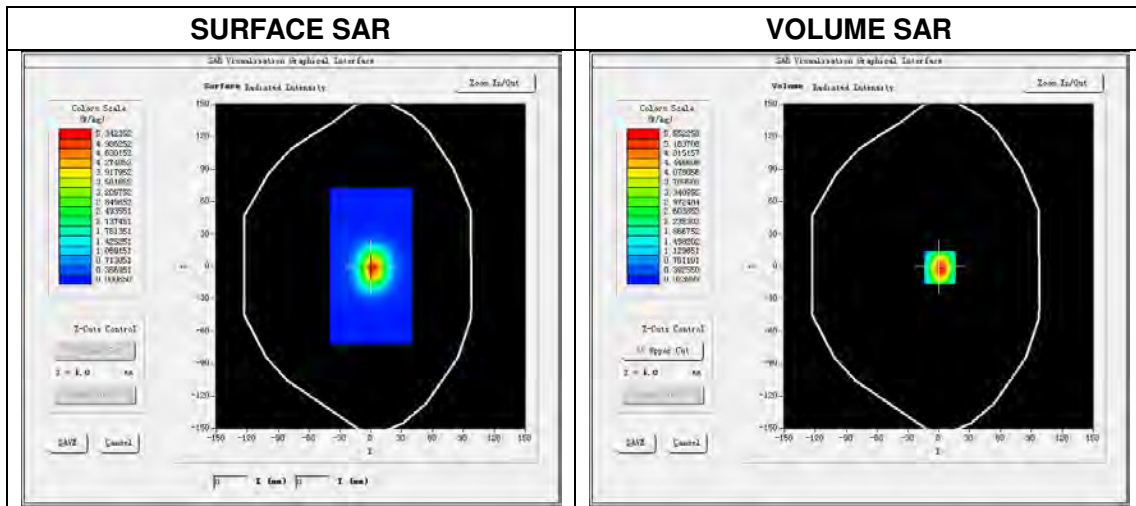
Zoom scan resolution: dx=4 mm, dy=4 mm, dz=2 mm

Date of measurement: 2016.11.20

Measurement duration: 29 minutes 36 seconds

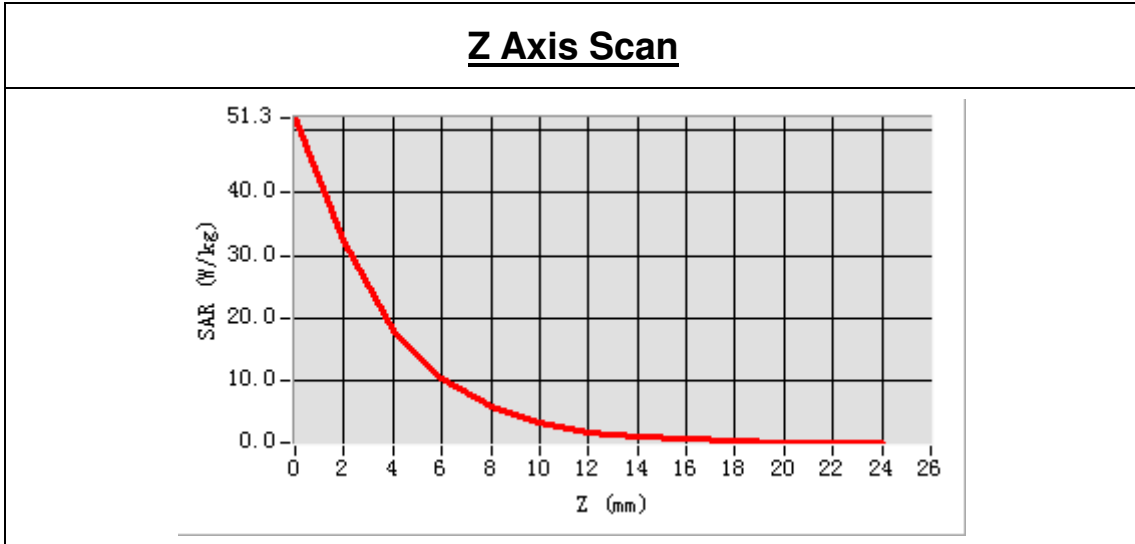
Experimental conditions.

Phantom File	surf_sam_plan.txt
Phantom	Validation plane
Band	5800 MHz
Signal	CW
Frequency (MHz)	5800.000000
Relative permittivity (real part)	47.209463
Conductivity (S/m)	6.038542
Power drift (%)	-0.190000
Ambient Temperature:	22.3C
Liquid Temperature:	21.2C
ConvF:	1.93
Crest factor:	1:1



Maximum location: X=1.00, Y=-1.00
 SAR Peak: 51.25 W/kg

SAR 10 g (W/Kg)	5.456137
SAR 1 g (W/Kg)	17.416139



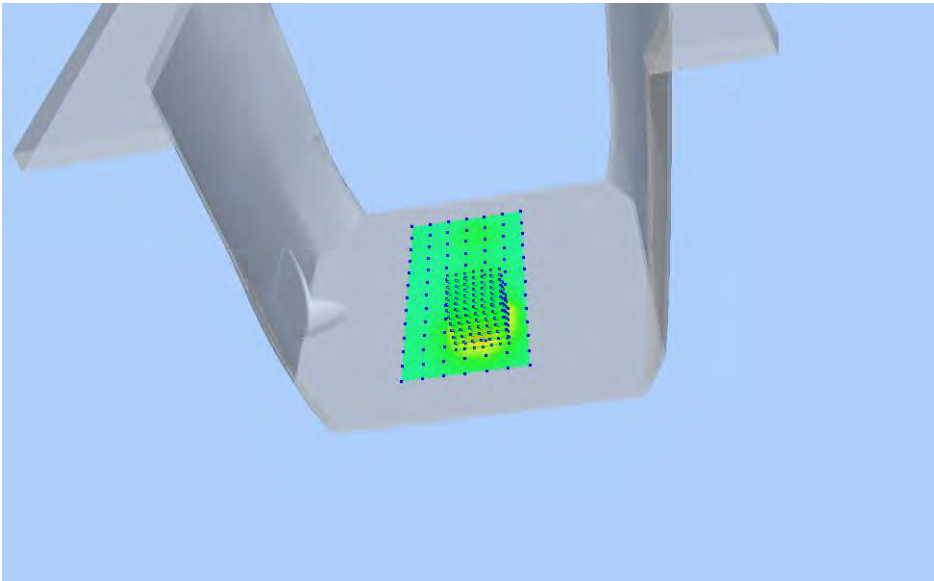
3D screen shot	Hot spot position

ANNEX C TEST DATA

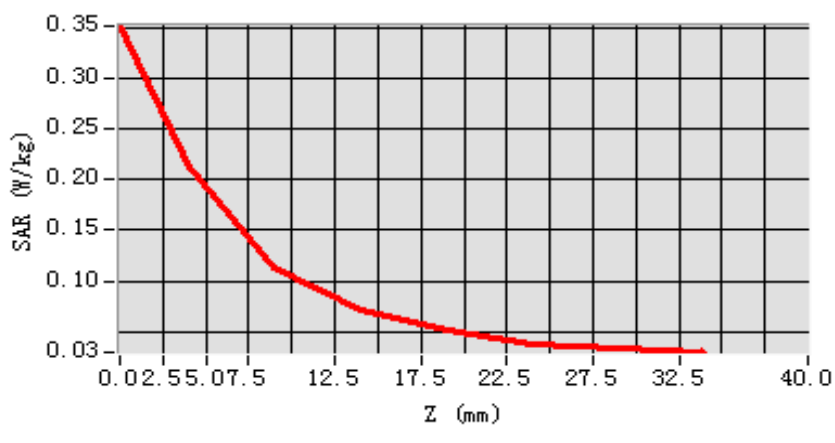
MEAS. 1 Body Plane with Left Edge on High Channel in IEEE 802.b mode with

Antenna A

Test Date: 15/11/2016
Measurement duration: 16 minutes 44 seconds
Signal: WLAN, f=2462.0 MHz, Duty Cycle: 1:1.0
Liquid Parameters: Permittivity: 51.90; Conductivity: 1.97 S/m
Test condition: Ambient Temperature: 22.4°C, Liquid Temperature: 21.2°C
Probe: SN 34/15 SSE2 EPGO265, ConvF: 2.55
Area Scan: sam_direct_droit2_surf12mm.txt, h= 5.00 mm
Zoom Scan: 7x7x7,dx=5mm, dy=5mm, dz=5mm,Complete
Maximum location: X=8.000000, Y=-36.000000
SAR 10g (W/Kg): 0.107522
SAR 1g (W/Kg): 0.204202
Power drift (%): -2.39
3D screen shot



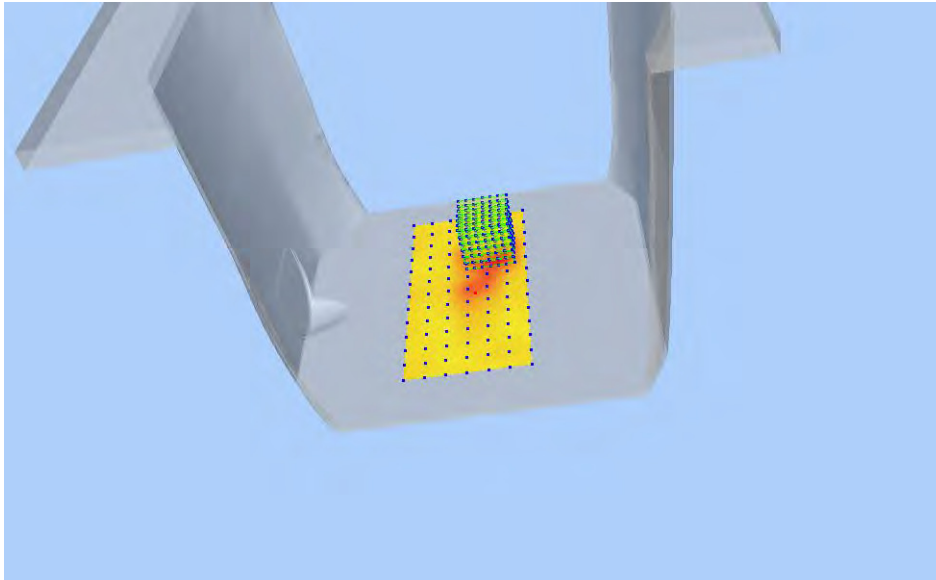
Z Axis Scan



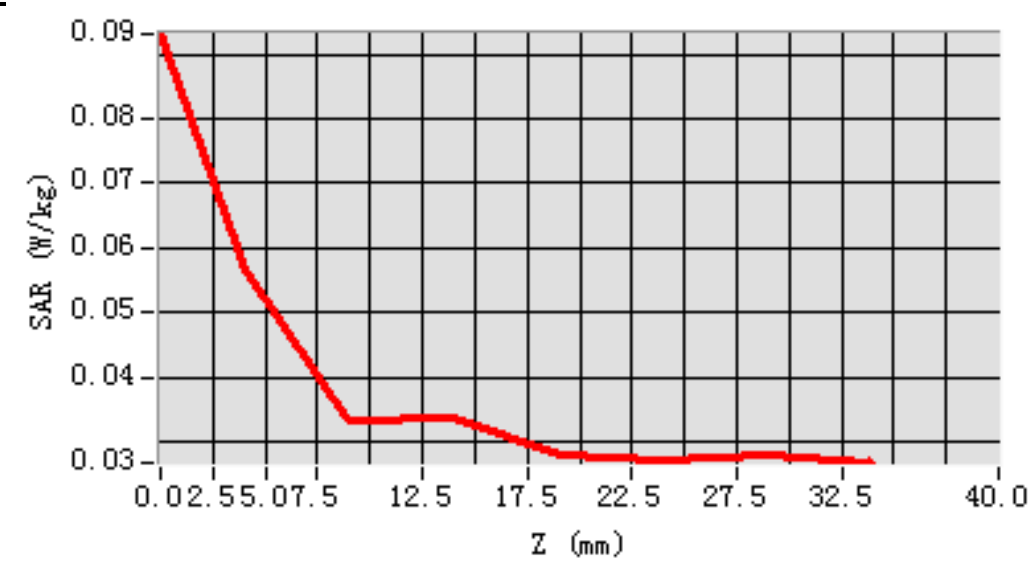
MEAS. 2 Body Plane with Left Edge on High Channel in IEEE 802.b mode with

Antenna B

Test Date: 15/11/2016
Measurement duration: 17 minutes 45 seconds
Signal: WLAN, f=2462.0 MHz, Duty Cycle: 1:1.0
Liquid Parameters: Permittivity: 51.90; Conductivity: 1.97 S/m
Test condition: Ambient Temperature: 22.4°C, Liquid Temperature: 21.2°C
Probe: SN 34/15 SSE2 EPGO265, ConvF: 2.55
Area Scan: sam_direct_droit2_surf12mm.txt, h= 5.00 mm
Zoom Scan: 7x7x7,dx=5mm, dy=5mm, dz=5mm,Complete
Maximum location: X=8.000000, Y=36.000000
SAR 10g (W/Kg): 0.037350
SAR 1g (W/Kg): 0.052891
Power drift (%): -4.95
3D screen shot

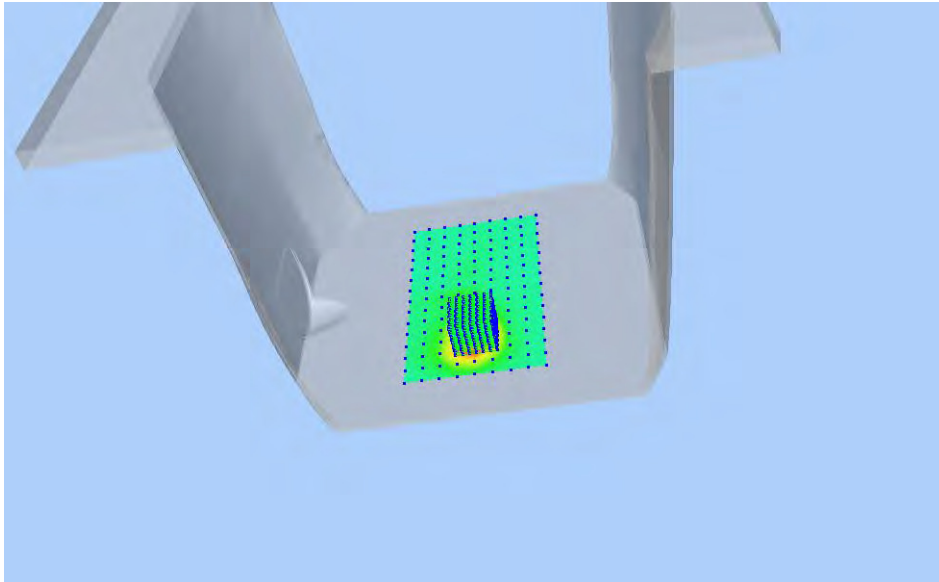


Z Axis Scan

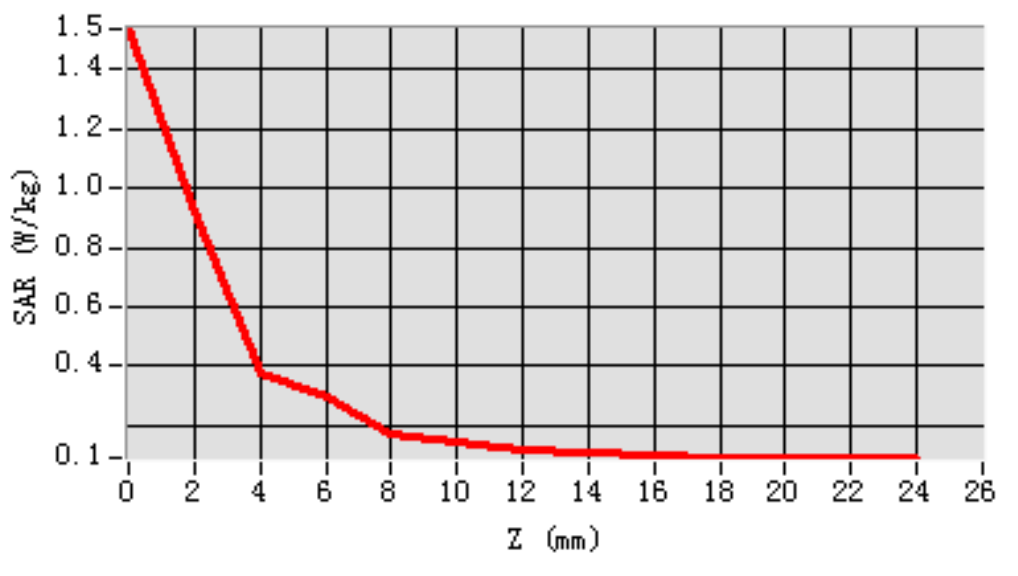


MEAS. 3 Body Plane with Left Edge on Channel 46 in IEEE 802.n(HT-40) mode with Antenna A

Test Date: 16/11/2016
Measurement duration: 26 minutes 22 seconds
Signal: WLAN, f=5230.0 MHz, Duty Cycle: 1:1.0
Liquid Parameters: Permittivity: 47.83; Conductivity: 5.28 S/m
Test condition: Ambient Temperature: 22.3°C, Liquid Temperature: 21.0°C
Probe: SN 34/15 SSE2 EPGO265, ConvF: 1.85
Area Scan: sam_direct_droit2_surf10mm.txt, h= 5.00 mm
Zoom Scan: 7x7x12,dx=4mm, dy=4mm, dz=2mm,Complete
Maximum location: X=0.000000, Y=-42.000000
SAR 10g (W/Kg): 0.243090
SAR 1g (W/Kg): 0.502095
Power drift (%): 0.08
3D screen shot

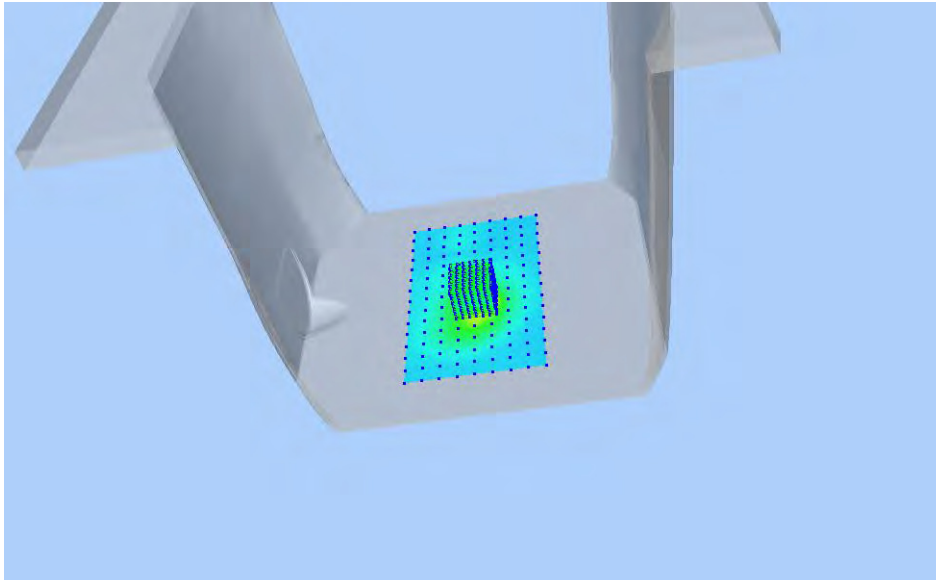


Z Axis Scan

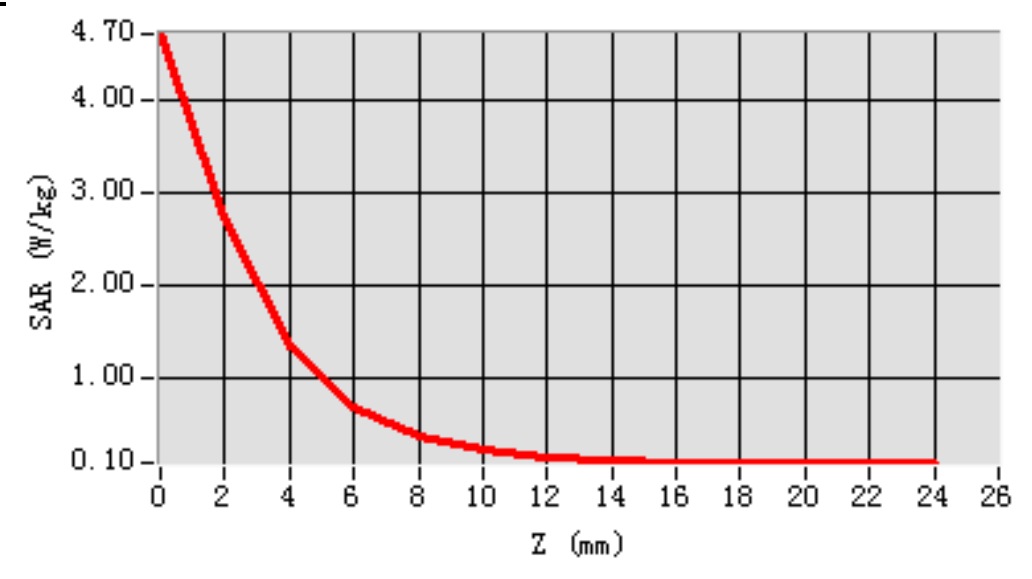


MEAS. 4 Body Plane with Left Edge on Channel 134 in IEEE 802.n(HT-40) mode with Antenna A

Test Date: 18/11/2016
Measurement duration: 27 minutes 46 seconds
Signal: WLAN, f=5670.0 MHz, Duty Cycle: 1:1.0
Liquid Parameters: Permittivity: 47.41; Conductivity: 5.72 S/m
Test condition: Ambient Temperature: 22.5°C, Liquid Temperature: 21.3°C
Probe: SN 34/15 SSE2 EPGO265, ConvF: 2.15
Area Scan: sam_direct_droit2_surf10mm.txt, h= 5.00 mm
Zoom Scan: 7x7x12,dx=4mm, dy=4mm, dz=2mm,Complete
Maximum location: X=0.000000, Y=-12.000000
SAR 10g (W/Kg): 0.510891
SAR 1g (W/Kg): 1.390616
Power drift (%): -4.36
3D screen shot



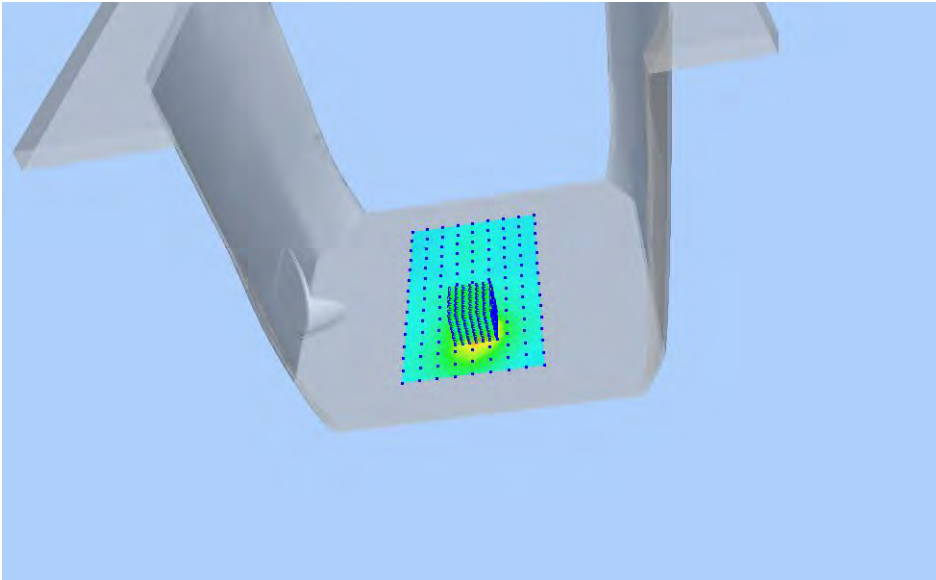
Z Axis Scan



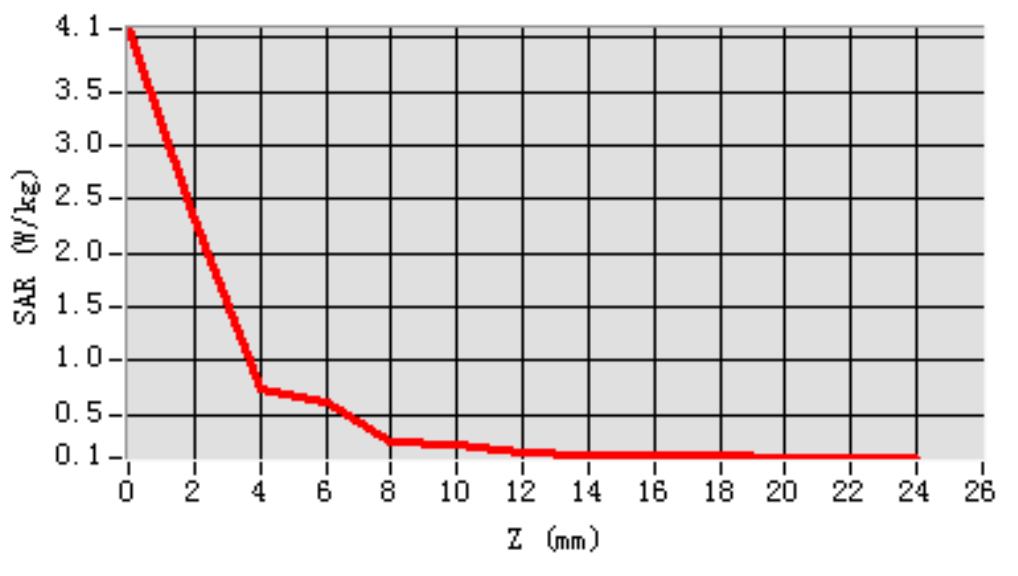
MEAS. 5 Body Plane with Left Edge on Channel 149 in IEEE 802.a mode with

Antenna A

Test Date: 20/11/2016
Measurement duration: 27 minutes 32 seconds
Signal: WLAN, f=5745.0 MHz, Duty Cycle: 1:1.0
Liquid Parameters: Permittivity: 47.33; Conductivity: 5.96 S/m
Test condition: Ambient Temperature: 22.3°C, Liquid Temperature: 21.2°C
Probe: SN 34/15 SSE2 EPGO265, ConvF: 1.93
Area Scan: sam_direct_droit2_surf10mm.txt, h= 5.00 mm
Zoom Scan: 7x7x12,dx=4mm, dy=4mm, dz=2mm,Complete
Maximum location: X=0.000000, Y=-32.000000
SAR 10g (W/Kg): 0.467181
SAR 1g (W/Kg): 1.125842
Power drift (%): -1.77
3D screen shot



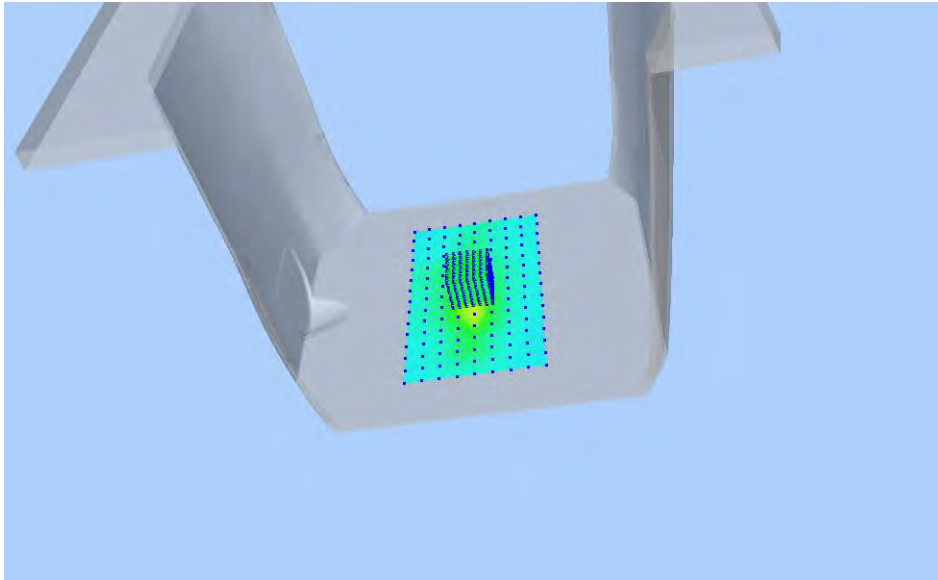
Z Axis Scan



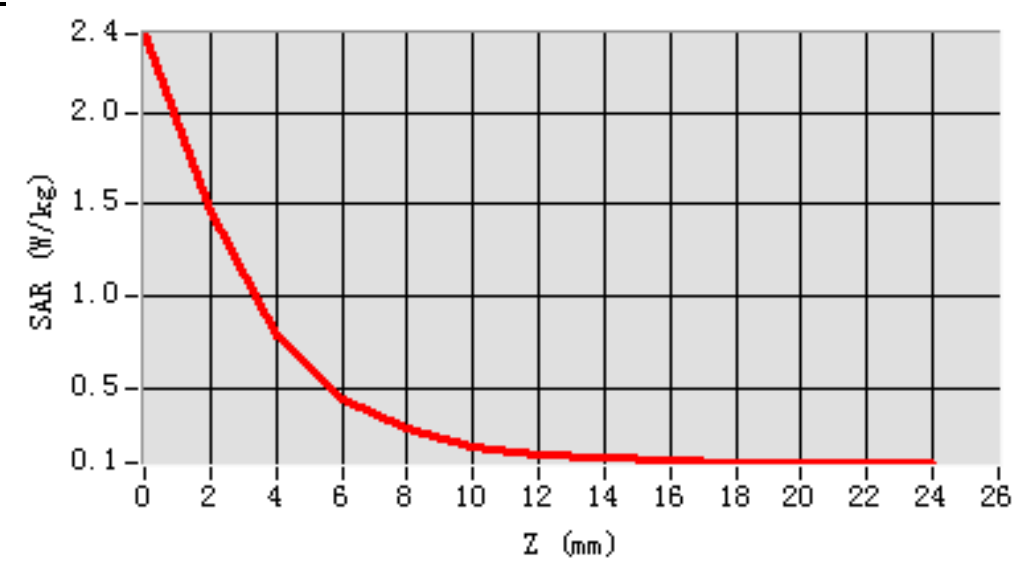
MEAS. 6 Body Plane with Left Edge on Channel 56 in IEEE 802.a mode with

Antenna B

Test Date: 17/11/2016
Measurement duration: 26 minutes 52 seconds
Signal: WLAN, f=5280.0 MHz, Duty Cycle: 1:1.0
Liquid Parameters: Permittivity: 47.76; Conductivity: 5.39 S/m
Test condition: Ambient Temperature: 21.9°C, Liquid Temperature: 20.7°C
Probe: SN 34/15 SSE2 EPGO265, ConvF: 2.11
Area Scan: sam_direct_droit2_surf10mm.txt, h= 5.00 mm
Zoom Scan: 7x7x12,dx=4mm, dy=4mm, dz=2mm,Complete
Maximum location: X=0.000000, Y=-2.000000
SAR 10g (W/Kg): 0.285137
SAR 1g (W/Kg): 0.763483
Power drift (%): -3.93
3D screen shot

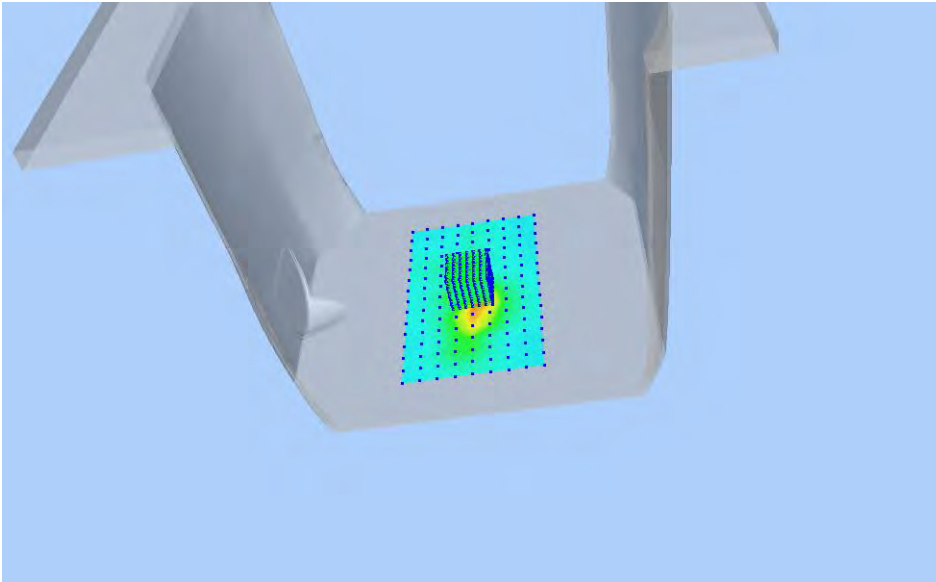


Z Axis Scan

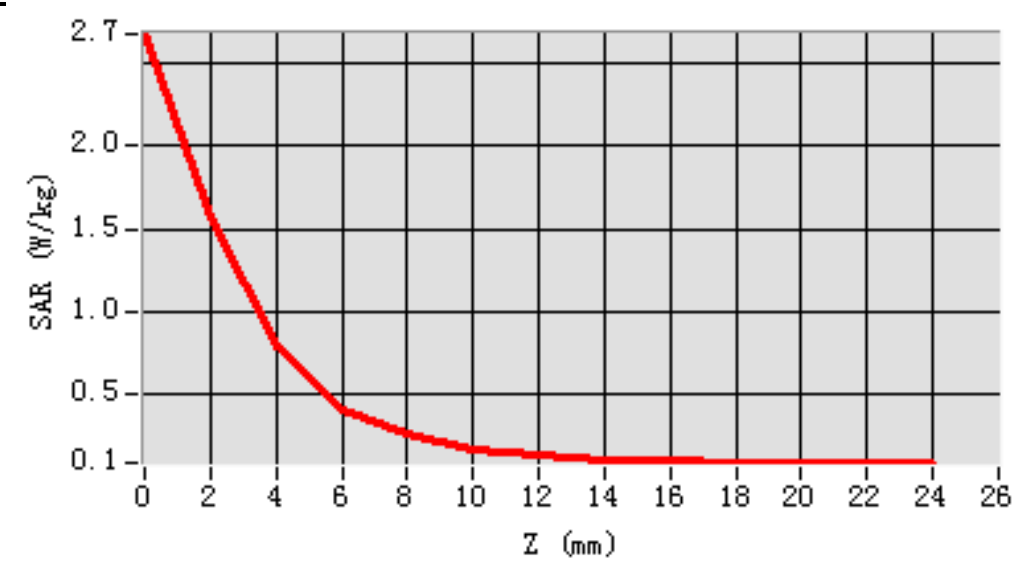


MEAS. 7 Body Plane with Left Edge on Channel 134 in IEEE 802.n(HT-40) mode with Antenna B

Test Date: 18/11/2016
Measurement duration: 27 minutes 17 seconds
Signal: WLAN, f=5670.0 MHz, Duty Cycle: 1:1.0
Liquid Parameters: Permittivity: 47.41; Conductivity: 5.72 S/m
Test condition: Ambient Temperature: 22.5°C, Liquid Temperature: 21.3°C
Probe: SN 34/15 SSE2 EPGO265, ConvF: 2.15
Area Scan: sam_direct_droit2_surf10mm.txt, h= 5.00 mm
Zoom Scan: 7x7x12,dx=4mm, dy=4mm, dz=2mm,Complete
Maximum location: X=0.000000, Y=-2.000000
SAR 10g (W/Kg): 0.357147
SAR 1g (W/Kg): 0.897403
Power drift (%): -2.13
3D screen shot



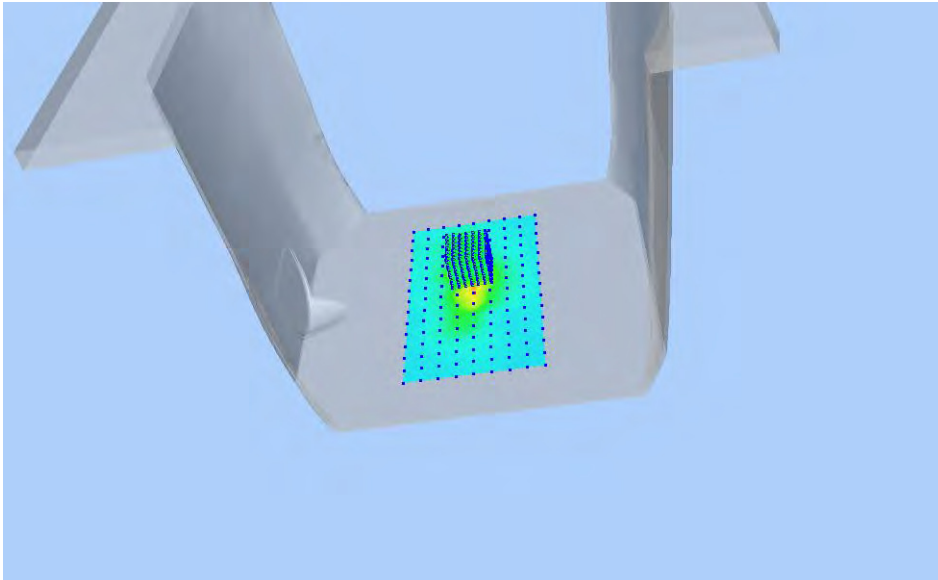
Z Axis Scan



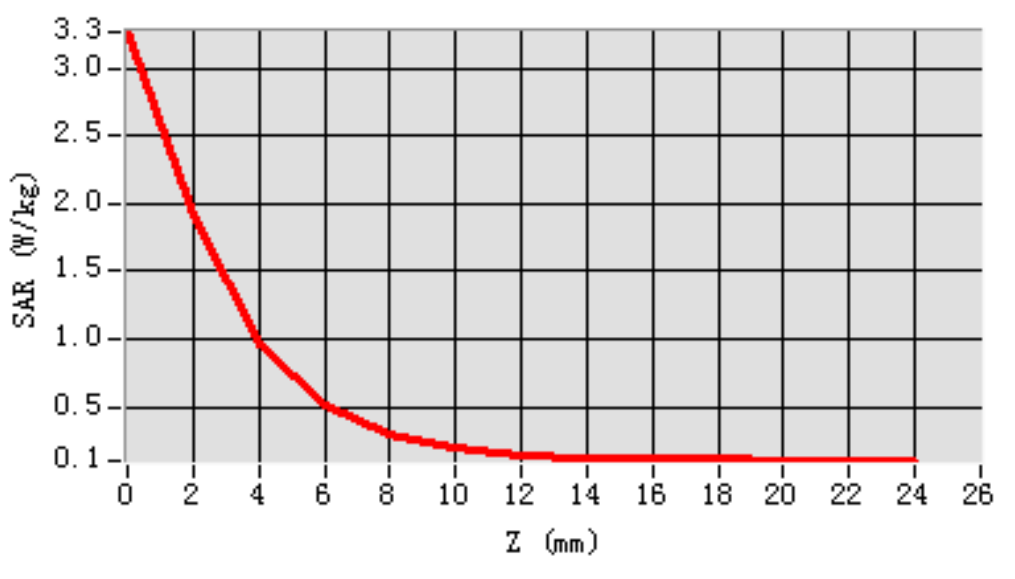
MEAS. 8 Body Plane with Left Edge on Channel 151 in IEEE 802.n(HT-40) mode with Antenna B

Test Date:	20/11/2016
Measurement duration:	26 minutes 53 seconds
Signal:	WLAN, f=5755.0 MHz, Duty Cycle: 1:1.0
Liquid Parameters:	Permittivity: 47.22; Conductivity: 6.02 S/m
Test condition:	Ambient Temperature: 22.3°C, Liquid Temperature: 21.2°C
Probe:	SN 34/15 SSE2 EPGO265, ConvF: 1.93
Area Scan:	sam_direct_droit2_surf10mm.txt, h= 5.00 mm
Zoom Scan:	7x7x12,dx=4mm, dy=4mm, dz=2mm,Complete
Maximum location:	X=0.000000, Y=18.000000
SAR 10g (W/Kg):	0.409249
SAR 1g (W/Kg):	1.020145
Power drift (%):	-3.57

3D screen shot



Z Axis Scan



ANNEX D EUT EXTERNAL PHOTOS

Please refer the document "BL-SZ1670309-AW.pdf".

ANNEX E SAR TEST SETUP PHOTOS

Please refer the document "BL-SZ1670309-AS.pdf".

ANNEX F CALIBRATION REPORT

F.1 E-Field Probe



COMOSAR E-Field Probe Calibration Report

Ref : ACR.294.1.16.SATU.A

SHENZHEN BALUN TECHNOLOGY CO.,LTD.
BLOCK B, FL 1, BAISHA SCIENCE AND TECHNOLOGY
PARK, SHAHE XI ROAD,
NANSHAN DISTRICT, SHENZHEN, GUANGDONG
PROVINCE, P.R. CHINA 518055
MVG COMOSAR DOSIMETRIC E-FIELD PROBE
SERIAL NO.: SN 34/15 EPGO265

Calibrated at MVG US
2105 Barrett Park Dr. - Kennesaw, GA 30144



Calibration Date: 09/15/2016

Summary:

This document presents the method and results from an accredited COMOSAR Dosimetric E-Field Probe calibration performed in MVG USA using the CALISAR / CALIBAIR test bench, for use with a COMOSAR system only. All calibration results are traceable to national metrology institutions.



COMOSAR E-FIELD PROBE CALIBRATION REPORT

Ref: ACR.294.1.16.SATU.A

	<i>Name</i>	<i>Function</i>	<i>Date</i>	<i>Signature</i>
<i>Prepared by :</i>	Jérôme LUC	Product Manager	9/24/2016	<i>JS</i>
<i>Checked by :</i>	Jérôme LUC	Product Manager	9/24/2016	<i>JS</i>
<i>Approved by :</i>	Kim RUTKOWSKI	Quality Manager	9/24/2016	<i>Kim Rutkowski</i>

	<i>Customer Name</i>
<i>Distribution :</i>	SHENZHEN BALUN TECHNOLOGY Co.,Ltd.

<i>Issue</i>	<i>Date</i>	<i>Modifications</i>
A	9/24/2016	Initial release



TABLE OF CONTENTS

1	Device Under Test	4
2	Product Description	4
2.1	General Information	4
3	Measurement Method	4
3.1	Linearity	4
3.2	Sensitivity	5
3.3	Lower Detection Limit	5
3.4	Isotropy	5
3.5	Boundary Effect	5
4	Measurement Uncertainty	5
5	Calibration Measurement Results	6
5.1	Sensitivity in air	6
5.2	Linearity	7
5.3	Sensitivity in liquid	7
5.4	Isotropy	8
6	List of Equipment	10

Page: 3/10

*This document shall not be reproduced, except in full or in part, without the written approval of MVG.
The information contained herein is to be used only for the purpose for which it is submitted and is not to
be released in whole or part without written approval of MVG.*



1 DEVICE UNDER TEST

Device Under Test	
Device Type	COMOSAR DOSIMETRIC E FIELD PROBE
Manufacturer	MVG
Model	SSE2
Serial Number	SN 34/15 EPGO265
Product Condition (new / used)	New
Frequency Range of Probe	0.45 GHz-6GHz
Resistance of Three Dipoles at Connector	Dipole 1: R1=0.192 MΩ Dipole 2: R2=0.230 MΩ Dipole 3: R3=0.205 MΩ

A yearly calibration interval is recommended.

2 PRODUCT DESCRIPTION

2.1 GENERAL INFORMATION

MVG’s COMOSAR E field Probes are built in accordance to the IEEE 1528, OET 65 Bulletin C and CEI/IEC 62209 standards.



Figure 1 – MVG COMOSAR Dosimetric E field Dipole

Probe Length	330 mm
Length of Individual Dipoles	2 mm
Maximum external diameter	8 mm
Probe Tip External Diameter	2.5 mm
Distance between dipoles / probe extremity	1 mm

3 MEASUREMENT METHOD

The IEEE 1528, OET 65 Bulletin C, CENELEC EN50361 and CEI/IEC 62209 standards provide recommended practices for the probe calibrations, including the performance characteristics of interest and methods by which to assess their affect. All calibrations / measurements performed meet the fore mentioned standards.

3.1 LINEARITY

The evaluation of the linearity was done in free space using the waveguide, performing a power sweep to cover the SAR range 0.01W/kg to 100W/kg.



3.2 SENSITIVITY

The sensitivity factors of the three dipoles were determined using a two step calibration method (air and tissue simulating liquid) using waveguides as outlined in the standards.

3.3 LOWER DETECTION LIMIT

The lower detection limit was assessed using the same measurement set up as used for the linearity measurement. The required lower detection limit is 10 mW/kg.

3.4 ISOTROPY

The axial isotropy was evaluated by exposing the probe to a reference wave from a standard dipole with the dipole mounted under the flat phantom in the test configuration suggested for system validations and checks. The probe was rotated along its main axis from 0 - 360 degrees in 15 degree steps. The hemispherical isotropy is determined by inserting the probe in a thin plastic box filled with tissue-equivalent liquid, with the plastic box illuminated with the fields from a half wave dipole. The dipole is rotated about its axis (0°–180°) in 15° increments. At each step the probe is rotated about its axis (0°–360°).

3.5 BOUNDARY EFFECT

The boundary effect is defined as the deviation between the SAR measured data and the expected exponential decay in the liquid when the probe is oriented normal to the interface. To evaluate this effect, the liquid filled flat phantom is exposed to fields from either a reference dipole or waveguide. With the probe normal to the phantom surface, the peak spatial average SAR is measured and compared to the analytical value at the surface.

4 MEASUREMENT UNCERTAINTY

The guidelines outlined in the IEEE 1528, OET 65 Bulletin C, CENELEC EN50361 and CEI/IEC 62209 standards were followed to generate the measurement uncertainty associated with an E-field probe calibration using the waveguide technique. All uncertainties listed below represent an expanded uncertainty expressed at approximately the 95% confidence level using a coverage factor of k=2, traceable to the Internationally Accepted Guides to Measurement Uncertainty.

Uncertainty analysis of the probe calibration in waveguide					
ERROR SOURCES	Uncertainty value (%)	Probability Distribution	Divisor	ci	Standard Uncertainty (%)
Incident or forward power	3.00%	Rectangular	$\sqrt{3}$	1	1.732%
Reflected power	3.00%	Rectangular	$\sqrt{3}$	1	1.732%
Liquid conductivity	5.00%	Rectangular	$\sqrt{3}$	1	2.887%
Liquid permittivity	4.00%	Rectangular	$\sqrt{3}$	1	2.309%
Field homogeneity	3.00%	Rectangular	$\sqrt{3}$	1	1.732%
Field probe positioning	5.00%	Rectangular	$\sqrt{3}$	1	2.887%



COMOSAR E-FIELD PROBE CALIBRATION REPORT

Ref: ACR.294.1.16.SATU.A

Field probe linearity	3.00%	Rectangular	$\sqrt{3}$	1	1.732%
Combined standard uncertainty					5.831%
Expanded uncertainty 95 % confidence level k = 2					12.0%

5 CALIBRATION MEASUREMENT RESULTS

Calibration Parameters	
Liquid Temperature	21 °C
Lab Temperature	21 °C
Lab Humidity	45 %

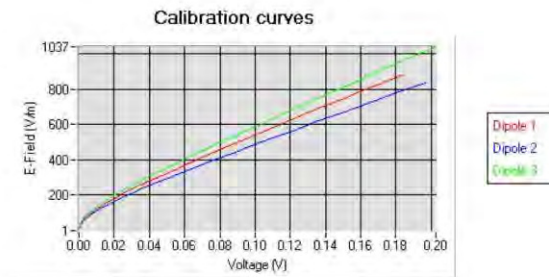
5.1 SENSITIVITY IN AIR

Normx dipole 1 ($\mu\text{V}/(\text{V}/\text{m})^2$)	Normy dipole 2 ($\mu\text{V}/(\text{V}/\text{m})^2$)	Normz dipole 3 ($\mu\text{V}/(\text{V}/\text{m})^2$)
0.72	0.81	0.85

DCP dipole 1 (mV)	DCP dipole 2 (mV)	DCP dipole 3 (mV)
92	90	95

Calibration curves $e_i=f(V)$ ($i=1,2,3$) allow to obtain E-field value using the formula:

$$E = \sqrt{E_1^2 + E_2^2 + E_3^2}$$

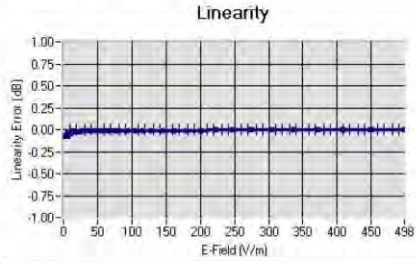




COMOSAR E-FIELD PROBE CALIBRATION REPORT

Ref: ACR.294.1.16.SATU.A

5.2 LINEARITY



Linearity \pm 1.61% (\pm 0.07dB)

5.3 SENSITIVITY IN LIQUID

Liquid	Frequency (MHz +/- 100MHz)	Permittivity	Epsilon (S/m)	ConvF
HL450	450	44.12	0.88	1.85
BL450	450	58.92	1.00	1.90
HL750	750	42.24	0.90	1.81
BL750	750	56.85	0.99	1.88
HL850	835	43.02	0.90	2.04
BL850	835	53.72	0.98	2.12
HL900	900	42.47	0.99	1.86
BL900	900	56.97	1.09	1.92
HL1800	1800	42.24	1.40	2.04
BL1800	1800	53.53	1.53	2.08
HL1900	1900	40.79	1.42	2.35
BL1900	1900	54.47	1.57	2.42
HL2000	2000	40.52	1.44	2.23
BL2000	2000	54.18	1.56	2.32
HL2450	2450	38.73	1.81	2.47
BL2450	2450	53.23	1.96	2.55
HL2600	2600	38.54	1.95	2.36
BL2600	2600	52.07	2.23	2.43
HL5200	5200	36.80	4.84	1.81
BL5200	5200	51.21	5.16	1.85
HL5400	5400	36.35	4.96	2.04
BL5400	5400	50.51	5.70	2.11
HL5600	5600	35.57	5.23	2.08
BL5600	5600	49.83	5.91	2.15
HL5800	5800	35.30	5.47	1.88
BL5800	5800	49.03	6.28	1.93

LOWER DETECTION LIMIT: 7mW/kg

Page: 7/10

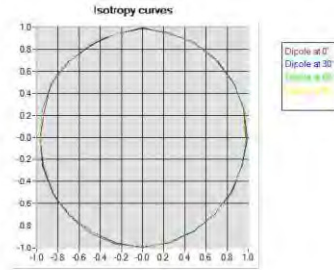
This document shall not be reproduced, except in full or in part, without the written approval of MVG. The information contained herein is to be used only for the purpose for which it is submitted and is not to be released in whole or part without written approval of MVG.



5.4 ISOTROPY

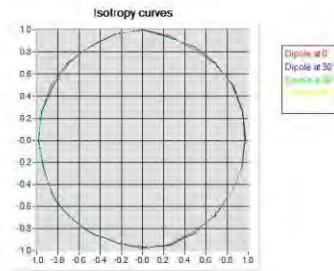
HL900 MHz

- Axial isotropy: 0.04 dB
- Hemispherical isotropy: 0.06 dB



HL1800 MHz

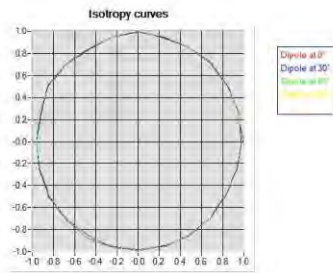
- Axial isotropy: 0.04 dB
- Hemispherical isotropy: 0.06 dB





HL5600 MHz

- Axial isotropy: 0.06 dB
- Hemispherical isotropy: 0.09 dB





6 LIST OF EQUIPMENT

Equipment Summary Sheet				
Equipment Description	Manufacturer / Model	Identification No.	Current Calibration Date	Next Calibration Date
Flat Phantom	MVG	SN-20/09-SAM71	Validated. No cal required.	Validated. No cal required.
COMOSAR Test Bench	Version 3	NA	Validated. No cal required.	Validated. No cal required.
Network Analyzer	Rhode & Schwarz ZVA	SN100132	10/2013	10/2016
Reference Probe	MVG	EP 94 SN 37/08	12/2015	12/2016
Multimeter	Keithley 2000	1188656	12/2013	12/2016
Signal Generator	Agilent E4438C	MY49070581	12/2013	12/2016
Amplifier	Aethercomm	SN 046	Characterized prior to test. No cal required.	Characterized prior to test. No cal required.
Power Meter	HP E4418A	US38261498	12/2013	12/2016
Power Sensor	HP ECP-E26A	US37181460	12/2013	12/2016
Directional Coupler	Narda 4216-20	01386	Characterized prior to test. No cal required.	Characterized prior to test. No cal required.
Waveguide	Mega Industries	069Y7-158-13-712	Validated. No cal required.	Validated. No cal required.
Waveguide Transition	Mega Industries	069Y7-158-13-701	Validated. No cal required.	Validated. No cal required.
Waveguide Termination	Mega Industries	069Y7-158-13-701	Validated. No cal required.	Validated. No cal required.



SAR Reference Dipole Calibration Report

Ref: ACR.75.13.15.SATU.A

SHENZHEN BALUN TECHNOLOGY CO.,LTD.
BLOCK B, FL 1, BAISHA SCIENCE AND TECHNOLOGY
PARK, SHAHE XI ROAD,
NANSHAN DISTRICT, SHENZHEN, GUANGDONG
PROVINCE, P.R. CHINA 518055
MVG COMOSAR REFERENCE DIPOLE
FREQUENCY: 2450 MHZ
SERIAL NO.: SN 25/13 DIP 2G450-251

Calibrated at MVG US
2105 Barrett Park Dr. - Kennesaw, GA 30144



03/16/2015

Summary:

This document presents the method and results from an accredited SAR reference dipole calibration performed in MVG USA using the COMOSAR test bench. All calibration results are traceable to national metrology institutions.



SAR REFERENCE DIPOLE CALIBRATION REPORT

Ref: ACR-72.13.03 SAR/1.A

	<i>Name</i>	<i>Function</i>	<i>Date</i>	<i>Signature</i>
<i>Prepared by :</i>	Jérôme LUC	Product Manager	3/16/2015	<i>JS</i>
<i>Checked by :</i>	Jérôme LUC	Product Manager	3/16/2015	<i>JS</i>
<i>Approved by :</i>	Kim RUTKOWSKI	Quality Manager	3/16/2015	<i>Kim Rutkowski</i>

	<i>Customer Name</i>
<i>Distribution :</i>	SHENZHEN BALUN TECHNOLOGY Co.,Ltd.

<i>Issue</i>	<i>Date</i>	<i>Modifications</i>
A	3/16/2015	Initial release



TABLE OF CONTENTS

1	Introduction.....	4
2	Device Under Test	4
3	Product Description	4
3.1	General Information	4
4	Measurement Method	5
4.1	Return Loss Requirements	5
4.2	Mechanical Requirements	5
5	Measurement Uncertainty	5
5.1	Return Loss	5
5.2	Dimension Measurement	5
5.3	Validation Measurement	5
6	Calibration Measurement Results.....	6
6.1	Return Loss and Impedance In Head Liquid	6
6.2	Return Loss and Impedance In Body Liquid	6
6.3	Mechanical Dimensions	6
7	Validation measurement	7
7.1	Head Liquid Measurement	7
7.2	SAR Measurement Result With Head Liquid	8
7.3	Body Liquid Measurement	9
7.4	SAR Measurement Result With Body Liquid	10
8	List of Equipment	11

Page: 3/11

*This document shall not be reproduced, except in full or in part, without the written approval of MVG.
The information contained herein is to be used only for the purpose for which it is submitted and is not to
be released in whole or part without written approval of MVG.*



1 INTRODUCTION

This document contains a summary of the requirements set forth by the IEEE 1528, FCC KDBs and CEI/IEC 62209 standards for reference dipoles used for SAR measurement system validations and the measurements that were performed to verify that the product complies with the fore mentioned standards.

2 DEVICE UNDER TEST

Device Under Test	
Device Type	COMOSAR 2450 MHz REFERENCE DIPOLE
Manufacturer	MVG
Model	SID2450
Serial Number	SN 25/13 DIP 2G450-251
Product Condition (new / used)	Used

A yearly calibration interval is recommended.

3 PRODUCT DESCRIPTION

3.1 GENERAL INFORMATION

MVG's COMOSAR Validation Dipoles are built in accordance to the IEEE 1528, FCC KDBs and CEI/IEC 62209 standards. The product is designed for use with the COMOSAR test bench only.



Figure 1 – MVG COMOSAR Validation Dipole



4 MEASUREMENT METHOD

The IEEE 1528, FCC KDBs and CENELEC 62209 standards provide requirements for reference dipoles used for system validation measurements. The following measurements were performed to verify that the product complies with the fore mentioned standards.

4.1 RETURN LOSS REQUIREMENTS

The dipole used for SAR system validation measurements and checks must have a return loss of -20 dB or better. The return loss measurement shall be performed against a liquid filled flat phantom with the phantom constructed as outlined in the fore mentioned standards.

4.2 MECHANICAL REQUIREMENTS

The IEEE Std. 1528 and CENELEC 62209 standards specify the mechanical components and dimensions of the validation dipoles, with the dimensions frequency and phantom shell thickness dependent. The COMOSAR test bench employs a 2 mm phantom shell thickness therefore the dipoles sold for use with the COMOSAR test bench comply with the requirements set forth for a 2 mm phantom shell thickness.

5 MEASUREMENT UNCERTAINTY

All uncertainties listed below represent an expanded uncertainty expressed at approximately the 95% confidence level using a coverage factor of k=2, traceable to the Internationally Accepted Guides to Measurement Uncertainty.

5.1 RETURN LOSS

The following uncertainties apply to the return loss measurement:

Frequency band	Expanded Uncertainty on Return Loss
400-6000MHz	0.1 dB

5.2 DIMENSION MEASUREMENT

The following uncertainties apply to the dimension measurements:

Length (mm)	Expanded Uncertainty on Length
3 - 300	0.05 mm

5.3 VALIDATION MEASUREMENT

The guidelines outlined in the IEEE 1528, FCC KDBs, CENELEC EN50361 and CENELEC 62209 standards were followed to generate the measurement uncertainty for validation measurements.

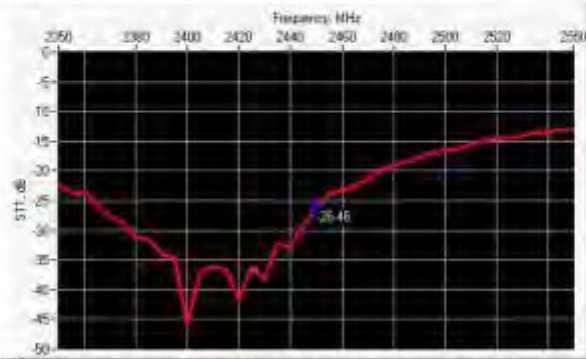
Scan Volume	Expanded Uncertainty
1 g	20.3 %



10 g	20.1 % ₀
------	---------------------

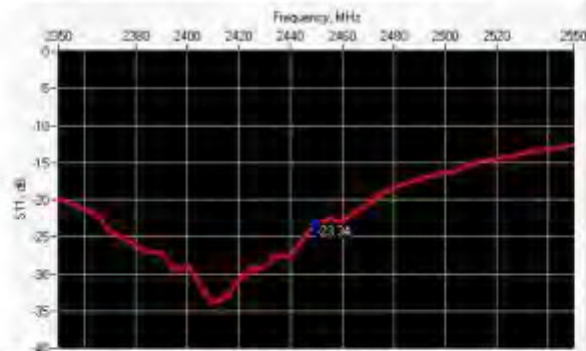
6 CALIBRATION MEASUREMENT RESULTS

6.1 RETURN LOSS AND IMPEDANCE IN HEAD LIQUID



Frequency (MHz)	Return Loss (dB)	Requirement (dB)	Impedance
2450	-26.46	-20	49.3 Ω - 4.7 jΩ

6.2 RETURN LOSS AND IMPEDANCE IN BODY LIQUID



Frequency (MHz)	Return Loss (dB)	Requirement (dB)	Impedance
2450	-23.34	-20	53.4 Ω - 6.2 jΩ

6.3 MECHANICAL DIMENSIONS

Frequency MHz	L mm		h mm		d mm	
	required	measured	required	measured	required	measured
300	420.0 ±1 %		250.0 ±1 %		6.35 ±1 %	

Page: 6/11

This document shall not be reproduced, except in full or in part, without the written approval of MVG. The information contained herein is to be used only for the purpose for which it is submitted and is not to be released in whole or part without written approval of MVG.



SAR REFERENCE DIPOLE CALIBRATION REPORT

Ref: ACR-72.13.03 SAR/D/A

450	290.0 ±1 %		166.7 ±1 %		6.35 ±1 %	
750	176.0 ±1 %		100.0 ±1 %		6.35 ±1 %	
855	161.0 ±1 %		89.8 ±1 %		3.6 ±1 %	
900	149.0 ±1 %		83.3 ±1 %		3.6 ±1 %	
1450	89.1 ±1 %		51.7 ±1 %		3.6 ±1 %	
1500	80.5 ±1 %		50.0 ±1 %		3.6 ±1 %	
1640	79.0 ±1 %		45.7 ±1 %		3.6 ±1 %	
1750	75.2 ±1 %		42.9 ±1 %		3.6 ±1 %	
1800	72.0 ±1 %		41.7 ±1 %		3.6 ±1 %	
1900	68.0 ±1 %		39.5 ±1 %		3.6 ±1 %	
1950	66.3 ±1 %		38.5 ±1 %		3.6 ±1 %	
2000	64.5 ±1 %		37.5 ±1 %		3.6 ±1 %	
2100	61.0 ±1 %		35.7 ±1 %		3.6 ±1 %	
2300	55.5 ±1 %		32.6 ±1 %		3.6 ±1 %	
2450	51.5 ±1 %	PASS	30.4 ±1 %	PASS	3.6 ±1 %	PASS
2600	48.5 ±1 %		28.8 ±1 %		3.6 ±1 %	
3000	41.5 ±1 %		25.0 ±1 %		3.6 ±1 %	
3500	37.0 ±1 %		26.4 ±1 %		3.6 ±1 %	
3700	34.7 ±1 %		26.4 ±1 %		3.6 ±1 %	

7 VALIDATION MEASUREMENT

The IEEE Std. 1528, FCC KDBs and CEI/IEC 62209 standards state that the system validation measurements must be performed using a reference dipole meeting the fore mentioned return loss and mechanical dimension requirements. The validation measurement must be performed against a liquid filled flat phantom, with the phantom constructed as outlined in the fore mentioned standards. Per the standards, the dipole shall be positioned below the bottom of the phantom, with the dipole length centered and parallel to the longest dimension of the flat phantom, with the top surface of the dipole at the described distance from the bottom surface of the phantom.

7.1 HEAD LIQUID MEASUREMENT

Frequency MHz	Relative permittivity (ε _r)		Conductivity (σ) S/m	
	required	measured	required	measured
300	45.3 ±5 %		0.87 ±5 %	
450	43.5 ±5 %		0.87 ±5 %	
750	41.9 ±5 %		0.88 ±5 %	
835	41.5 ±5 %		0.90 ±5 %	
900	41.5 ±5 %		0.97 ±5 %	
1450	40.5 ±5 %		1.20 ±5 %	
1500	40.4 ±5 %		1.23 ±5 %	
1640	40.2 ±5 %		1.31 ±5 %	
1750	40.1 ±5 %		1.37 ±5 %	

Page: 7/11

This document shall not be reproduced, copied in full or in part, without the written approval of MTVG. The information contained herein is to be used only for the purpose for which it is submitted and is not to be released in whole or part without written approval of MTVG.



SAR REFERENCE DIPOLE CALIBRATION REPORT

Ref: ACR-72.13.03 SAR/D/A

1800	40.0 ±5 %		1.40 ±5 %	
1900	40.0 ±5 %		1.40 ±5 %	
1950	40.0 ±5 %		1.40 ±5 %	
2000	40.0 ±5 %		1.40 ±5 %	
2100	39.8 ±5 %		1.49 ±5 %	
2300	39.5 ±5 %		1.67 ±5 %	
2450	39.2 ±5 %	PASS	1.80 ±5 %	PASS
2600	39.0 ±5 %		1.96 ±5 %	
3000	38.5 ±5 %		2.40 ±5 %	
3500	37.9 ±5 %		2.90 ±5 %	

7.2 SAR MEASUREMENT RESULT WITH HEAD LIQUID

The IEEE Std. 1528 and CEI/IEC 62209 standards state that the system validation measurements should produce the SAR values shown below (for phantom thickness of 2 mm), within the uncertainty for the system validation. All SAR values are normalized to 1 W forward power. In bracket, the measured SAR is given with the used input power.

Software	OPENSAR V4
Phantom	SN 20V09 SAM71
Probe	SN 18/11 EPG122
Liquid	Head Liquid Values: $\epsilon_{ps} = 38.9$ $\sigma_{ps} = 1.79$
Distance between dipole center and liquid	10.0 mm
Area scan resolution	$dx=8mm$ $dy=8mm$
Zoon Scan Resolution	$dz=5mm/dy=5m/dx=5mm$
Frequency	2450 MHz
Input power	20 dBm
Liquid Temperature	21 °C
Lab Temperature	21 °C
Lab Humidity	45 %

Frequency MHz	1 g SAR (W/kg/W)		10 g SAR (W/kg/W)	
	required	measured	required	measured
300	2.85		1.94	
450	4.58		3.06	
750	8.49		5.55	
835	9.56		6.22	
900	10.9		6.99	
1450	29		16	
1500	30.5		16.8	
1640	34.2		18.8	
1750	36.4		19.3	
1800	38.4		20.1	

Page: 8/11

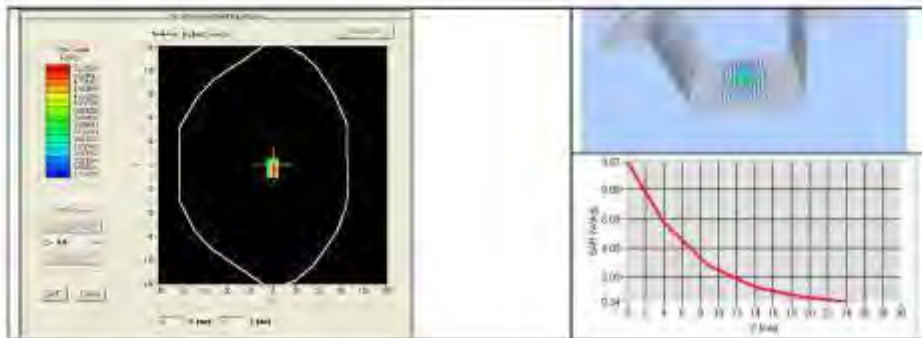
This document shall not be reproduced, copied in full or in part, without the written approval of MTVQ. The information contained herein is to be used only for the purpose for which it is submitted and is not to be released in whole or part without written approval of MTVQ.



SAR REFERENCE DIPOLE CALIBRATION REPORT

Ref: ACR-73.13.15.SAR1.A

1900	39.7		20.5	
1950	40.5		20.9	
2000	41.1		21.1	
2100	43.6		21.9	
2300	48.7		23.3	
2450	52.4	54.29 (5.43)	24	24.20 (2.42)
2600	55.3		24.6	
3000	63.8		25.7	
3500	67.1		25	



7.3 BODY LIQUID MEASUREMENT

Frequency MHz	Relative permittivity (ϵ_r)		Conductivity (σ) S/m	
	required	measured	required	measured
150	61.9 ±5 %		0.80 ±5 %	
300	58.2 ±5 %		0.92 ±5 %	
450	56.7 ±5 %		0.94 ±5 %	
750	55.5 ±5 %		0.96 ±5 %	
835	55.2 ±5 %		0.97 ±5 %	
900	55.0 ±5 %		1.05 ±5 %	
915	55.0 ±5 %		1.06 ±5 %	
1450	54.0 ±5 %		1.30 ±5 %	
1610	53.8 ±5 %		1.40 ±5 %	
1800	53.3 ±5 %		1.52 ±5 %	
1900	53.3 ±5 %		1.52 ±5 %	
2000	53.3 ±5 %		1.52 ±5 %	
2100	53.2 ±5 %		1.62 ±5 %	
2450	52.7 ±5 %	PASS	1.95 ±5 %	PASS

Page: 9/11

This document shall not be reproduced, except in full or in part, without the written approval of MVG. The information contained herein is to be used only for the purpose for which it is submitted and is not to be released in whole or part without written approval of MVG.



SAR REFERENCE DIPOLE CALIBRATION REPORT

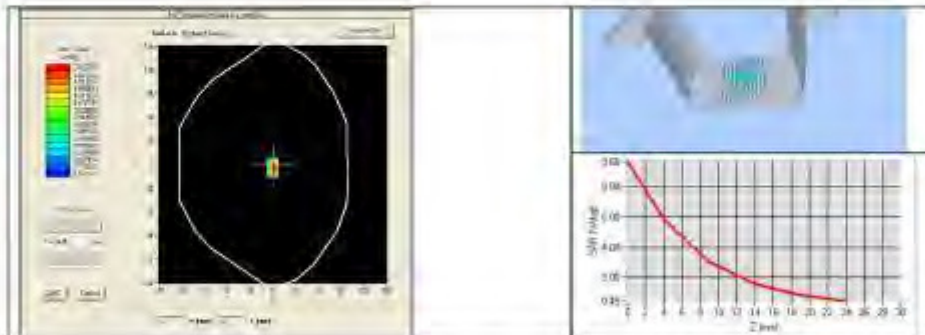
Ref: ACR-73.13.15.SAR1/A

2600	52.5 ±5 %		2.16 ±5 %	
3000	52.0 ±5 %		2.73 ±5 %	
3500	51.3 ±5 %		3.31 ±5 %	
5200	49.0 ±10 %		5.30 ±10 %	
5300	48.9 ±10 %		5.42 ±10 %	
5400	48.7 ±10 %		5.53 ±10 %	
5500	48.6 ±10 %		5.65 ±10 %	
5600	48.5 ±10 %		5.77 ±10 %	
5800	48.2 ±10 %		6.00 ±10 %	

7.4 SAR MEASUREMENT RESULT WITH BODY LIQUID

Software	OPENSAR V4
Phantom	SN 20/09 SAM71
Probe	SN 18/11 EPG122
Liquid	Body Liquid Values: eps = 52.7 sigma : 1.94
Distance between dipole center and liquid	10.0 mm
Area scan resolution	dx=8mm/dy=8mm
Zoon Scan Resolution	dx=5mm/dy=5m/dz=5mm
Frequency	2450 MHz
Input power	20 dBm
Liquid Temperature	21 °C
Lab Temperature	21 °C
Lab Humidity	45 %

Frequency MHz	1 g SAR (W/kg/W)	10 g SAR (W/kg/W)
	measured	measured
2450	54.70 (5.47)	24.86 (2.48)



Page: 10/11

This document shall not be reproduced, except in full or in part, without the written approval of MVG. The information contained herein is to be used only for the purpose for which it is submitted and is not to be released in whole or part without written approval of MVG.



SAR REFERENCE DIPOLE CALIBRATION REPORT

Ref: ACR-75.13.15.SATU.A

8 LIST OF EQUIPMENT

Equipment Summary Sheet				
Equipment Description	Manufacturer / Model	Identification No.	Current Calibration Date	Next Calibration Date
SAM Phantom	MVG	SN-20/09-SAM71	Validated. No cal required.	Validated. No cal required.
COMOSAR Test Bench	Version 3	NA	Validated. No cal required.	Validated. No cal required.
Network Analyzer	Rhode & Schwarz ZVA	SN100132	02/2013	02/2016
Calipers	Carrera	CALIPER-01	12/2013	12/2016
Reference Probe	MVG	EPG122 SN 18/11	10/2014	10/2015
Multimeter	Keithley 2000	1188666	12/2013	12/2016
Signal Generator	Agilent E4438C	MY49070561	12/2013	12/2016
Amplifier	Aethercomm	SN 046	Characterized prior to test. No cal required.	Characterized prior to test. No cal required.
Power Meter	HP E4418A	US38261498	12/2013	12/2016
Power Sensor	HP ECP-E26A	US37181460	12/2013	12/2016
Directional Coupler	Narda 4216-20	01386	Characterized prior to test. No cal required.	Characterized prior to test. No cal required.
Temperature and Humidity Sensor	Control Company	11-661-9	8/2012	8/2015

Page: 11/11

*This document shall not be reproduced, except in full or in part, without the written approval of MVG.
The information contained herein is to be used only for the purpose for which it is submitted and is not to be released in whole or part without written approval of MVG.*



SAR Reference Waveguide Calibration Report

Ref.: ACR.75.15.15.SATU.A

SHENZHEN BALUN TECHNOLOGY CO.,LTD.
BLOCK B, FL 1, BAISHA SCIENCE AND TECHNOLOGY
PARK, SHAHE XI ROAD,
NANSHAN DISTRICT, SHENZHEN, GUANGDONG
PROVINCE, P.R. CHINA 518055
MVG COMOSAR REFERENCE WAVEGUIDE
FREQUENCY: 5000-6000 MHZ
SERIAL NO.: SN 30/13 WGA24

Calibrated at MVG US
2105 Barrett Park Dr. - Kennesaw, GA 30144



03/16/2015

Summary:

This document presents the method and results from an accredited SAR reference waveguide calibration performed in MVG USA using the COMOSAR test bench. All calibration results are traceable to national metrology institutions.



SAR REFERENCE WAVEGUIDE CALIBRATION REPORT

REF: ACE-75.15.14.S&T1.A

	<i>Name</i>	<i>Function</i>	<i>Date</i>	<i>Signature</i>
<i>Prepared by :</i>	Jérôme LUC	Product Manager	3/16/2015	<i>[Signature]</i>
<i>Checked by :</i>	Jérôme LUC	Product Manager	3/16/2015	<i>[Signature]</i>
<i>Approved by :</i>	Kim RUTKOWSKI	Quality Manager	3/16/2015	<i>[Signature]</i>

	<i>Customer Name</i>
<i>Distribution :</i>	SHENZHEN BALUN TECHNOLOGY Co., Ltd.

<i>Issue</i>	<i>Date</i>	<i>Modifications</i>
A	3/16/2015	Initial release

This document shall not be reproduced, except in full or in part, without the written approval of MVG.
The information contained herein is to be used only for the purpose for which it is submitted and is not to be released in whole or part without written approval of MVG.



TABLE OF CONTENTS

1	Introduction.....	4
2	Device Under Test	4
3	Product Description	4
3.1	General Information	4
4	Measurement Method	4
4.1	Return Loss Requirements	4
4.2	Mechanical Requirements	4
5	Measurement Uncertainty.....	5
5.1	Return Loss	5
5.2	Dimension Measurement	5
5.3	Validation Measurement	5
6	Calibration Measurement Results.....	5
6.1	Return Loss	5
6.2	Mechanical Dimensions	6
7	Validation measurement	7
7.1	Head Liquid Measurement	7
7.2	Measurement Result	7
7.3	Body Measurement Result	10
8	List of Equipment.....	13

Page: 3/13

*This document shall not be reproduced, except in full or in part, without the written approval of MVG.
The information contained herein is to be used only for the purpose for which it is submitted and is not to
be released in whole or part without written approval of MVG.*

1 INTRODUCTION

This document contains a summary of the requirements set forth by the IEEE 1528 and CEI/IEC 62209 standards for reference waveguides used for SAR measurement system validations and the measurements that were performed to verify that the product complies with the fore mentioned standards.

2 DEVICE UNDER TEST

Device Under Test	
Device Type	COMOSAR 5000-6000 MHz REFERENCE WAVEGUIDE
Manufacturer	MVG
Model	SWG5500
Serial Number	SN 30/13 WGA24
Product Condition (new / used)	Used

A yearly calibration interval is recommended.

3 PRODUCT DESCRIPTION

3.1 GENERAL INFORMATION

MVG's COMOSAR Validation Waveguides are built in accordance to the IEEE 1528 and CEI/IEC 62209 standards.

4 MEASUREMENT METHOD

The IEEE 1528 and CEI/IEC 62209 standards provide requirements for reference waveguides used for system validation measurements. The following measurements were performed to verify that the product complies with the fore mentioned standards.

4.1 RETURN LOSS REQUIREMENTS

The waveguide used for SAR system validation measurements and checks must have a return loss of ≥ 8 dB or better. The return loss measurement shall be performed with matching layer placed in the open end of the waveguide, with the waveguide and matching layer in direct contact with the phantom shell as outlined in the fore mentioned standards.

4.2 MECHANICAL REQUIREMENTS

The IEEE 1528 and CEI/IEC 62209 standards specify the mechanical dimensions of the validation waveguide, the specified dimensions are as shown in Section 6.2. Figure 1 shows how the dimensions relate to the physical construction of the waveguide.

Page: 4/13

*This document shall not be reproduced, copied in full or in part, without the written approval of MVG.
The information contained herein is to be used only for the purpose for which it is submitted and is not to be released in whole or part without written approval of MVG.*



5 MEASUREMENT UNCERTAINTY

All uncertainties listed below represent an expanded uncertainty expressed at approximately the 95% confidence level using a coverage factor of k=2, traceable to the Internationally Accepted Guides to Measurement Uncertainty.

5.1 RETURN LOSS

The following uncertainties apply to the return loss measurement:

Frequency band	Expanded Uncertainty on Return Loss
400-6000MHz	0.1 dB

5.2 DIMENSION MEASUREMENT

The following uncertainties apply to the dimension measurements:

Length (mm)	Expanded Uncertainty on Length
3 - 300	0.05 mm

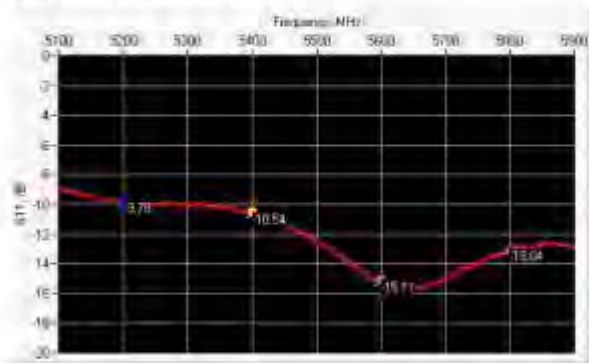
5.3 VALIDATION MEASUREMENT

The guidelines outlined in the IEEE 1528 and CEI/IEC 62209 standards were followed to generate the measurement uncertainty for validation measurements.

Scan Volume	Expanded Uncertainty
1 g	20.3 %
10 g	20.1 %

6 CALIBRATION MEASUREMENT RESULTS

6.1 RETURN LOSS IN HEAD LIQUID



Page: 5/13

This document shall not be reproduced, except in full or in part, without the written approval of MVG. The information contained herein is to be used only for the purpose for which it is submitted and is not to be released in whole or part without written approval of MVG.

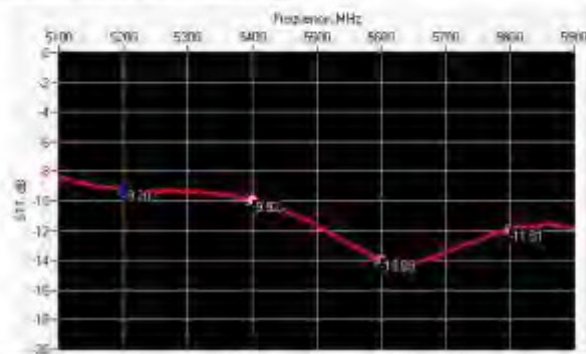


SAR REFERENCE WAVEGUIDE CALIBRATION REPORT

Ref: ACE-75 (5/14/SAIT) A

Frequency (MHz)	Return Loss (dB)	Requirement (dB)	Impedance
5200	-9.78	-8	$26.6 \Omega + 9.1 j\Omega$
5400	-10.54	-8	$89.7 \Omega + 12.3 j\Omega$
5600	-15.11	-8	$38.1 \Omega - 9.8 j\Omega$
5800	-13.04	-8	$54.0 \Omega + 23.4 j\Omega$

6.2 RETURN LOSS IN BODY LIQUID



Frequency (MHz)	Return Loss (dB)	Requirement (dB)	Impedance
5200	-9.20	-8	$25.7 \Omega + 10.6 j\Omega$
5400	-9.92	-8	$95.8 \Omega + 8.8 j\Omega$
5600	-13.89	-8	$35.3 \Omega - 9.2 j\Omega$
5800	-11.91	-8	$56.0 \Omega + 27.2 j\Omega$

6.3 MECHANICAL DIMENSIONS

Frequency (MHz)	L (mm)		W (mm)		L ₂ (mm)		W ₂ (mm)		T (mm)	
	Require d	Measure d	Require d	Measure d	Require d	Measure d	Require d	Measure d	Require d	Measure d
5200	40.39 ± 0.13	PASS	20.19 ± 0.13	PASS	81.03 ± 0.13	PASS	61.98 ± 0.13	PASS	4.3*	PASS
5800	40.39 ± 0.13	PASS	20.19 ± 0.13	PASS	81.03 ± 0.13	PASS	61.98 ± 0.13	PASS	4.3*	PASS

* The tolerance for the matching layer is included in the return loss measurement.

Page: 6/13

This document shall not be reproduced, except in full or in part, without the written approval of MVG.
The information contained herein is to be used only for the purpose for which it is submitted and is not to be released in whole or part without written approval of MVG.



Figure 1: Validation Waveguide Dimensions

7 VALIDATION MEASUREMENT

The IEEE Std. 1528 and CEI/IEC 62209 standards state that the system validation measurements must be performed using a reference waveguide meeting the fore mentioned return loss and mechanical dimension requirements. The validation measurement must be performed with the matching layer placed in the open end of the waveguide, with the waveguide and matching layer in direct contact with the phantom shell.

7.1 HEAD LIQUID MEASUREMENT

Frequency MHz	Relative permittivity (ϵ_r)		Conductivity (σ) S/m	
	required	measured	required	measured
5000	36.2 ±10 %		4.45 ±10 %	
5100	36.1 ±10 %		4.56 ±10 %	
5200	36.0 ±10 %	PASS	4.66 ±10 %	PASS
5300	35.9 ±10 %		4.76 ±10 %	
5400	35.8 ±10 %	PASS	4.86 ±10 %	PASS
5500	35.6 ±10 %		4.97 ±10 %	
5600	35.5 ±10 %	PASS	5.07 ±10 %	PASS
5700	35.4 ±10 %		5.17 ±10 %	
5800	35.3 ±10 %	PASS	5.27 ±10 %	PASS
5900	35.2 ±10 %		5.38 ±10 %	
6000	35.1 ±10 %		5.48 ±10 %	

7.2 SAR MEASUREMENT RESULT WITH HEAD LIQUID

At those frequencies, the target SAR value can not be generic. Hereunder is the target SAR value defined by MVG, within the uncertainty for the system validation. All SAR values are normalized to 1 W net power. In bracket, the measured SAR is given with the used input power.



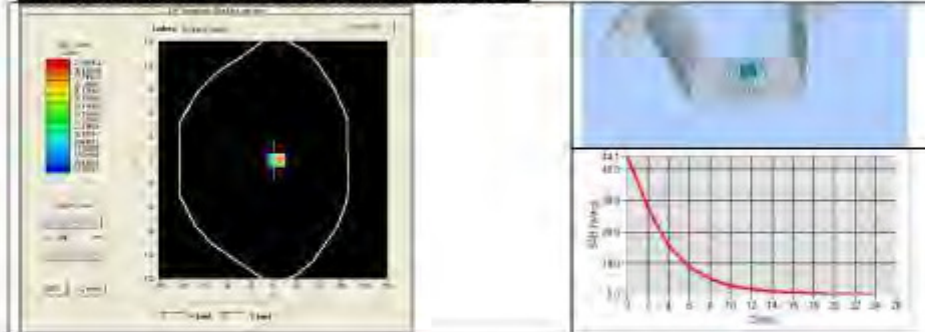
SAR REFERENCE WAVEGUIDE CALIBRATION REPORT

Ref: ACE-75 (5/14/S&IT)/A

Software	OPENSAR V4
Phantom	SN 20/09 SAM71
Probe	SN 18/11 BPG122
Liquid	Head Liquid Values 5200 MHz: eps' :36.44 sigma : 4.79 Head Liquid Values 5400 MHz: eps' :35.99 sigma : 4.91 Head Liquid Values 5600 MHz: eps' :35.22 sigma : 5.18 Head Liquid Values 5800 MHz: eps' :34.95 sigma : 5.42
Distance between dipole waveguide and liquid	0 mm
Area scan resolution	dx=8mm/dy=8mm
Zoon Scan Resolution	dx=4mm/dy=4m/dz=2mm
Frequency	5200 MHz 5400 MHz 5600 MHz 5800 MHz
Input power	20 @3m
Liquid Temperature	21 °C
Lab Temperature	21 °C
Lab Humidity	45 %

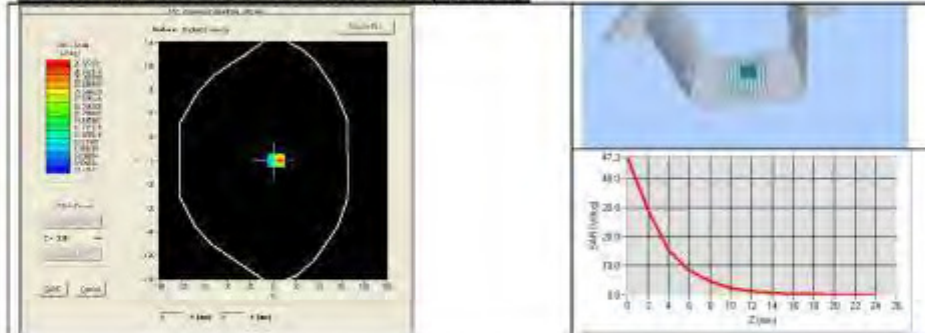
Frequency (MHz)	1 g SAR (W/kg)		10 g SAR (W/kg)	
	required	measured	required	measured
5200	159.00	157.80 (15.78)	56.90	55.01 (5.50)
5400	166.40	162.69 (16.27)	58.43	56.17 (5.62)
5600	173.80	171.22 (17.12)	59.97	58.57 (5.86)
5800	181.20	179.53 (17.95)	61.50	60.55 (6.05)

SAR MEASUREMENT PLOTS @ 5200 MHz

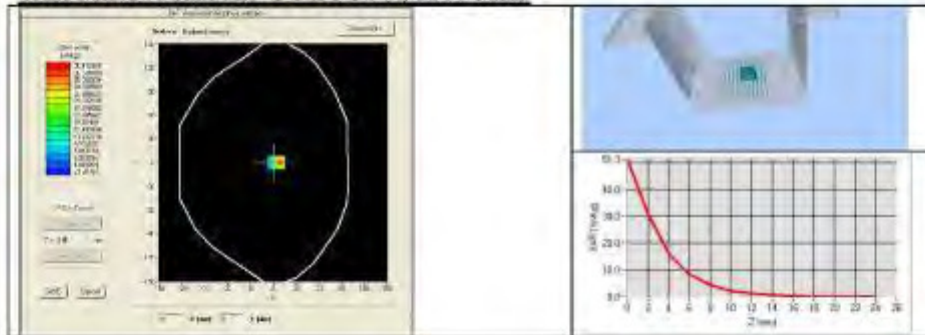




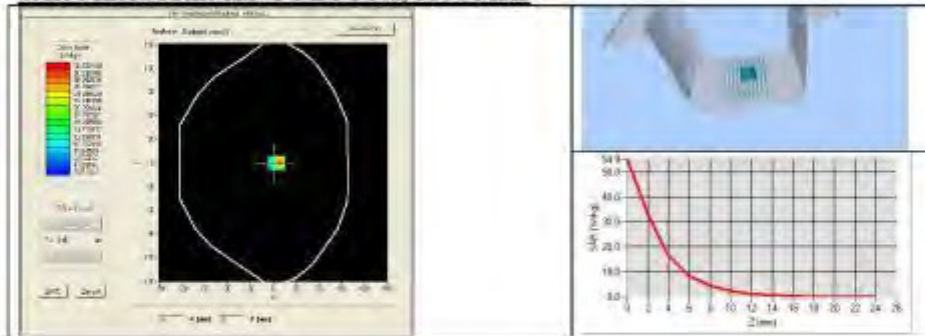
SAR MEASUREMENT PLOTS @ 5400 MHz



SAR MEASUREMENT PLOTS @ 5600 MHz



SAR MEASUREMENT PLOTS @ 5800 MHz





SAR REFERENCE WAVEGUIDE CALIBRATION REPORT

Ref: ACE-75-1534.S&IT/A

7.3 BODY LIQUID MEASUREMENT

Frequency MHz	Relative permittivity (ϵ_r)		Conductivity (σ) S/m	
	required	measured	required	measured
5200	49.0 \pm 10 %	PASS	5.30 \pm 10 %	PASS
5300	48.9 \pm 10 %		5.42 \pm 10 %	
5400	48.7 \pm 10 %	PASS	5.53 \pm 10 %	PASS
5500	48.6 \pm 10 %		5.65 \pm 10 %	
5600	48.5 \pm 10 %	PASS	5.77 \pm 10 %	PASS
5800	48.2 \pm 10 %	PASS	6.00 \pm 10 %	PASS

7.4 SAR MEASUREMENT RESULT WITH BODY LIQUID

Software	OPENSAR V4
Phantom	SN 2009 SAM71
Probe	SN 18/11 EPG122
Liquid	Body Liquid Values 5200 MHz: ϵ_r : 50.70 σ : 5.11 Body Liquid Values 5400 MHz: ϵ_r : 50.01 σ : 5.64 Body Liquid Values 5600 MHz: ϵ_r : 49.34 σ : 5.85 Body Liquid Values 5800 MHz: ϵ_r : 48.54 σ : 6.22
Distance between dipole waveguide and liquid	0mm
Area scan resolution	d_x =8mm/ d_y =8mm
Zoon Scan Resolution	d_x =4mm/ d_y =4m/ d_z =2mm
Frequency	5200 MHz 5400 MHz 5600 MHz 5800 MHz
Input power	20 dBm
Liquid Temperature	21 °C
Lab Temperature	21 °C
Lab Humidity	45 %

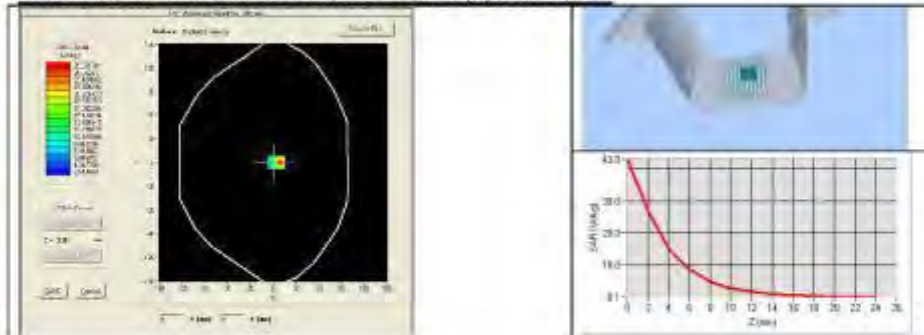
Frequency (MHz)	1 g SAR (W/kg)	10 g SAR (W/kg)
	measured	measured
5200	155.12 (15.51)	54.66 (5.47)
5400	162.06 (16.21)	56.46 (5.65)
5600	167.13 (16.71)	57.78 (5.78)
5800	173.19 (17.32)	59.30 (5.93)

Page: 10/13

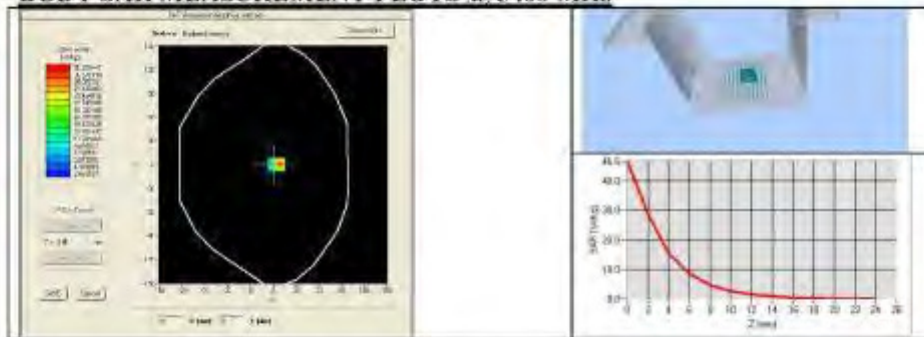
*This document shall not be reproduced, copied in full or in part, without the written approval of MVG.
The information contained herein is to be used only for the purpose for which it is submitted and is not to be released in whole or part without written approval of MVG.*



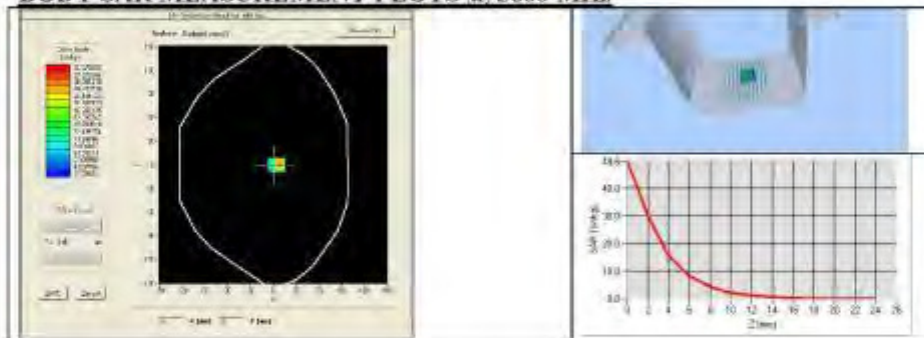
BODY SAR MEASUREMENT PLOTS @ 5200 MHz



BODY SAR MEASUREMENT PLOTS @ 5400 MHz



BODY SAR MEASUREMENT PLOTS @ 5600 MHz





8 LIST OF EQUIPMENT

Equipment Summary Sheet				
Equipment Description	Manufacturer / Model	Identification No.	Current Calibration Date	Next Calibration Date
Flat Phantom	MVG	SN-2009-SAM71	Validated. No cal required.	Validated. No cal required.
COMOSAR Test Bench	Version 3	NA	Validated. No cal required.	Validated. No cal required.
Network Analyzer	Rhode & Schwarz ZVA	SN100132	02/2013	02/2016
Calipers	Carrera	CALIPER-01	12/2013	12/2016
Reference Probe	MVG	EPG122 SN 18/11	10/2014	10/2015
Multimeter	Keithley 2000	1188656	12/2013	12/2016
Signal Generator	Agilent E4438C	MY49070581	12/2013	12/2016
Amplifier	Aethercomm	SN 046	Characterized prior to test. No cal required.	Characterized prior to test. No cal required.
Power Meter	HP E4418A	US38261498	12/2013	12/2016
Power Sensor	HP ECP-E26A	US37181460	12/2013	12/2016
Directional Coupler	Narda 4216-20	01386	Characterized prior to test. No cal required.	Characterized prior to test. No cal required.
Temperature and Humidity Sensor	Control Company	11-661-9	8/2012	8/2015



8 LIST OF EQUIPMENT

Equipment Summary Sheet				
Equipment Description	Manufacturer / Model	Identification No.	Current Calibration Date	Next Calibration Date
Flat Phantom	MVG	SN-2009-SAM71	Validated. No cal required.	Validated. No cal required.
COMOSAR Test Bench	Version 3	NA	Validated. No cal required.	Validated. No cal required.
Network Analyzer	Rhode & Schwarz ZVA	SN100132	02/2013	02/2016
Calipers	Carrera	CALIPER-01	12/2013	12/2016
Reference Probe	MVG	EPG122 SN 18/11	10/2014	10/2015
Multimeter	Keithley 2000	1188656	12/2013	12/2016
Signal Generator	Agilent E4438C	MY49070581	12/2013	12/2016
Amplifier	Aethercomm	SN 046	Characterized prior to test. No cal required.	Characterized prior to test. No cal required.
Power Meter	HP E4418A	US38261498	12/2013	12/2016
Power Sensor	HP ECP-E26A	US37181460	12/2013	12/2016
Directional Coupler	Narda 4216-20	01386	Characterized prior to test. No cal required.	Characterized prior to test. No cal required.
Temperature and Humidity Sensor	Control Company	11-661-9	8/2012	8/2015

F.4 SATIMO Dipole

Please refer the document "SATIMO Dipole Measurement Report.PDF".

--END OF REPORT--