

SAR Plots

- Verification Plots

- SAR Test Plots

DT&C Co., Ltd.

DUT: Dipole 2450 MHz; Type: D2450V2; Serial: D2450V2 - SN:920

Communication System: CW; Frequency: 2450 MHz; Duty Cycle: 1:1
Medium parameters used: $f = 2450$ MHz; $\sigma = 1.805$ S/m; $\epsilon_r = 37.855$; $\rho = 1000$ kg/m³
Phantom section: Flat Section

DASY5 Configuration:

Probe: ES3DV3 - SN3328; ConvF(4.5, 4.5, 4.5); Calibrated: 2014-03-27; Electronics: DAE3 Sn519
Phantom: SAM with CRP_20120521; Type: SAM; Serial: 1679
Measurement SW: DASY52, Version 52.8 (7); SEMCAD X Version 14.6.10 (7164)

Test Date: 2014-08-20; Ambient Temp: 20.7; Tissue Temp: 21.2

2450 MHz System Verification

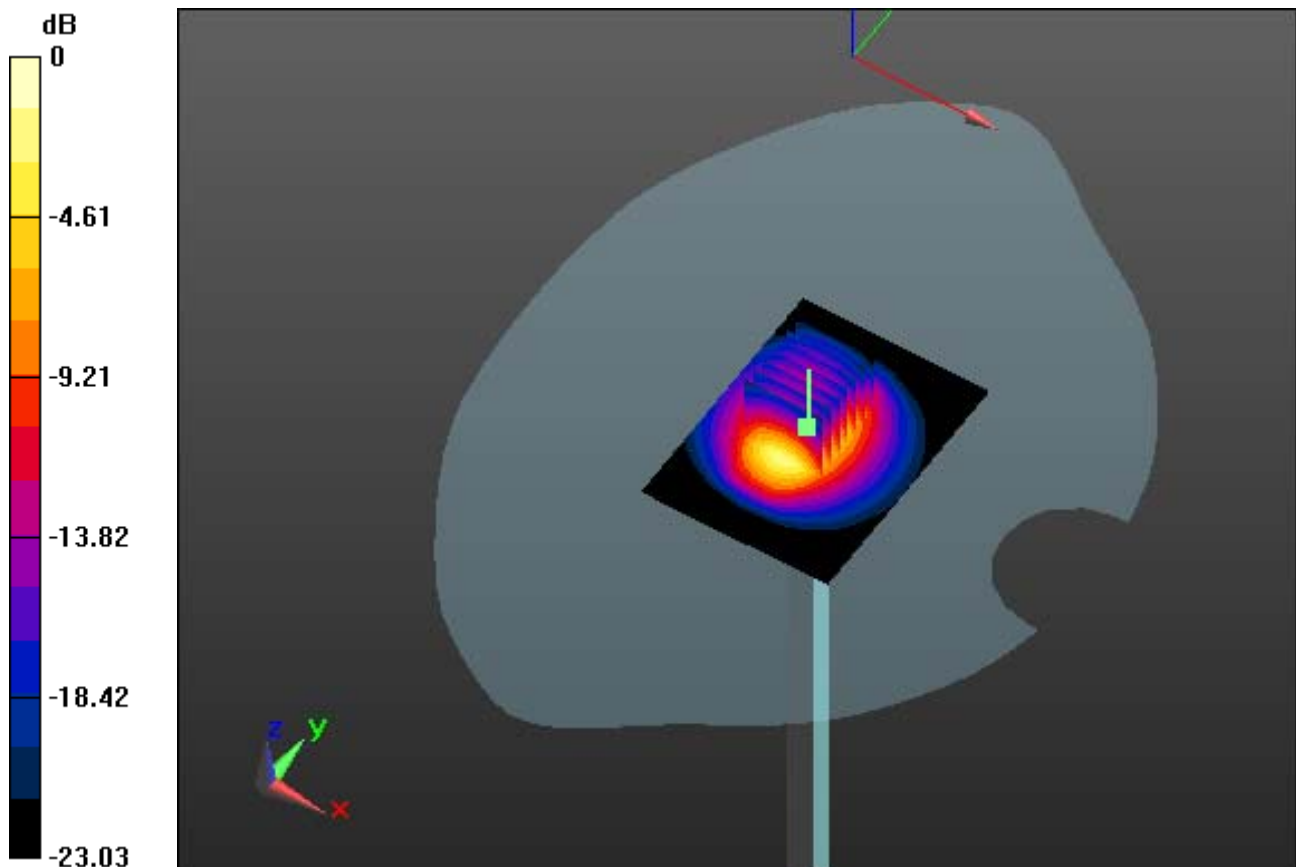
Area Scan (61x81x1): Interpolated grid: dx=12mm, dy=12mm

Zoom Scan (7x7x7)/Cube 0: Measurement grid: dx=5mm, dy=5mm, dz=5mm

Power Drift = 0.07 dB

Peak SAR (extrapolated) = 26.8 W/kg

SAR(1 g) = 12.9 W/kg; SAR(10 g) = 5.88 W/kg



0 dB = 18.2 W/kg

DT&C Co., Ltd.

DUT: Dipole 2450 MHz; Type: D2450V2; Serial: D2450V2 - SN:920

Communication System: CW; Frequency: 2450 MHz; Duty Cycle: 1:1
Medium parameters used: $f = 2450$ MHz; $\sigma = 1.805$ S/m; $\epsilon_r = 37.855$; $\rho = 1000$ kg/m³
Phantom section: Flat Section

DASY5 Configuration:

Probe: ES3DV3 - SN3328; ConvF(4.5, 4.5, 4.5); Calibrated: 2014-03-27; Electronics: DAE3 Sn519
Phantom: SAM with CRP_20120521; Type: SAM; Serial: 1679
Measurement SW: DASY52, Version 52.8 (7); SEMCAD X Version 14.6.10 (7164)

Test Date: 2014-08-20; Ambient Temp: 20.7; Tissue Temp: 21.2

2450 MHz System Verification

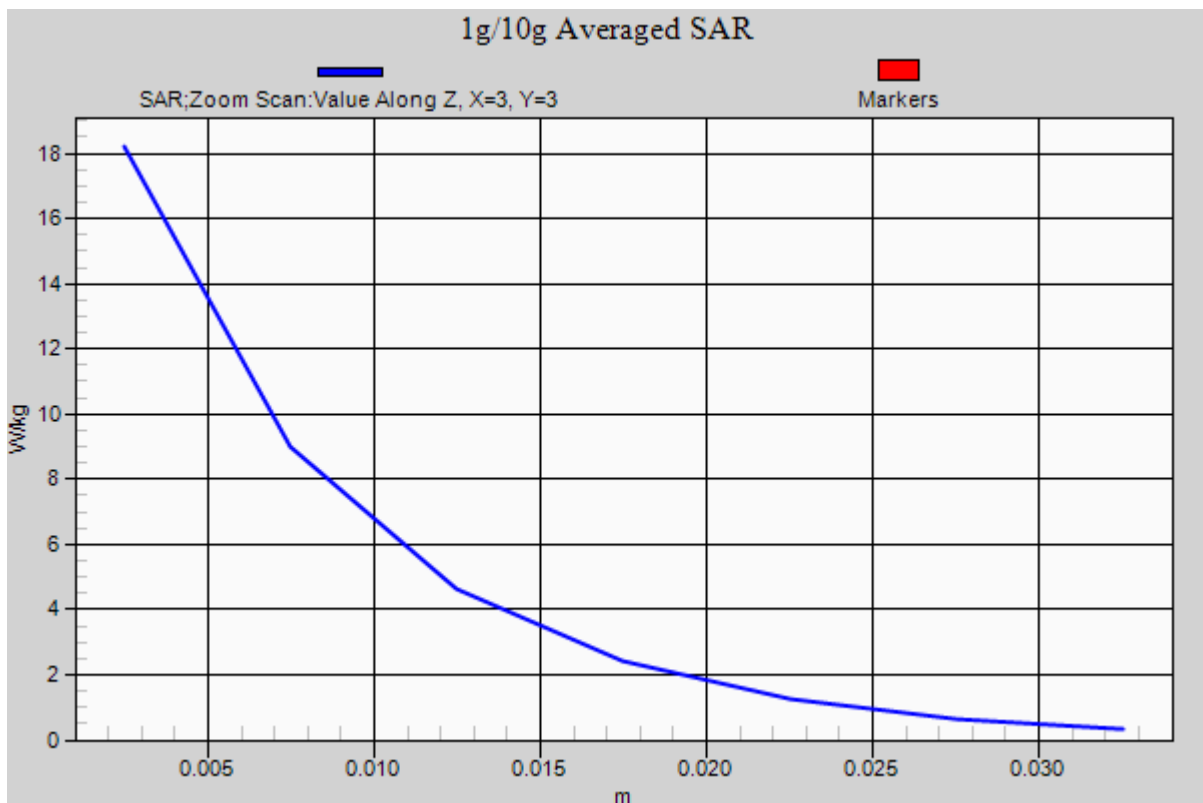
Area Scan (61x81x1): Interpolated grid: dx=12mm, dy=12mm

Zoom Scan (7x7x7)/Cube 0: Measurement grid: dx=5mm, dy=5mm, dz=5mm

Power Drift = 0.07 dB

Peak SAR (extrapolated) = 26.8 W/kg

SAR(1 g) = 12.9 W/kg; SAR(10 g) = 5.88 W/kg



DT&C Co., Ltd.

DUT: Dipole 2450 MHz; Type: D2450V2; Serial: D2450V2 - SN:920

Communication System: CW; Frequency: 2450 MHz; Duty Cycle: 1:1
Medium parameters used: $f = 2450$ MHz; $\sigma = 1.965$ S/m; $\epsilon_r = 51.228$; $\rho = 1000$ kg/m³
Phantom section: Flat Section

DASY5 Configuration:

Probe: ES3DV3 - SN3328; ConvF(4.21, 4.21, 4.21); Calibrated: 2013-09-24; Electronics: DAE3 Sn519
Phantom: SAM with CRP_20120521; Type: SAM; Serial: 1679
Measurement SW: DASY52, Version 52.8 (7); SEMCAD X Version 14.6.10 (7164)

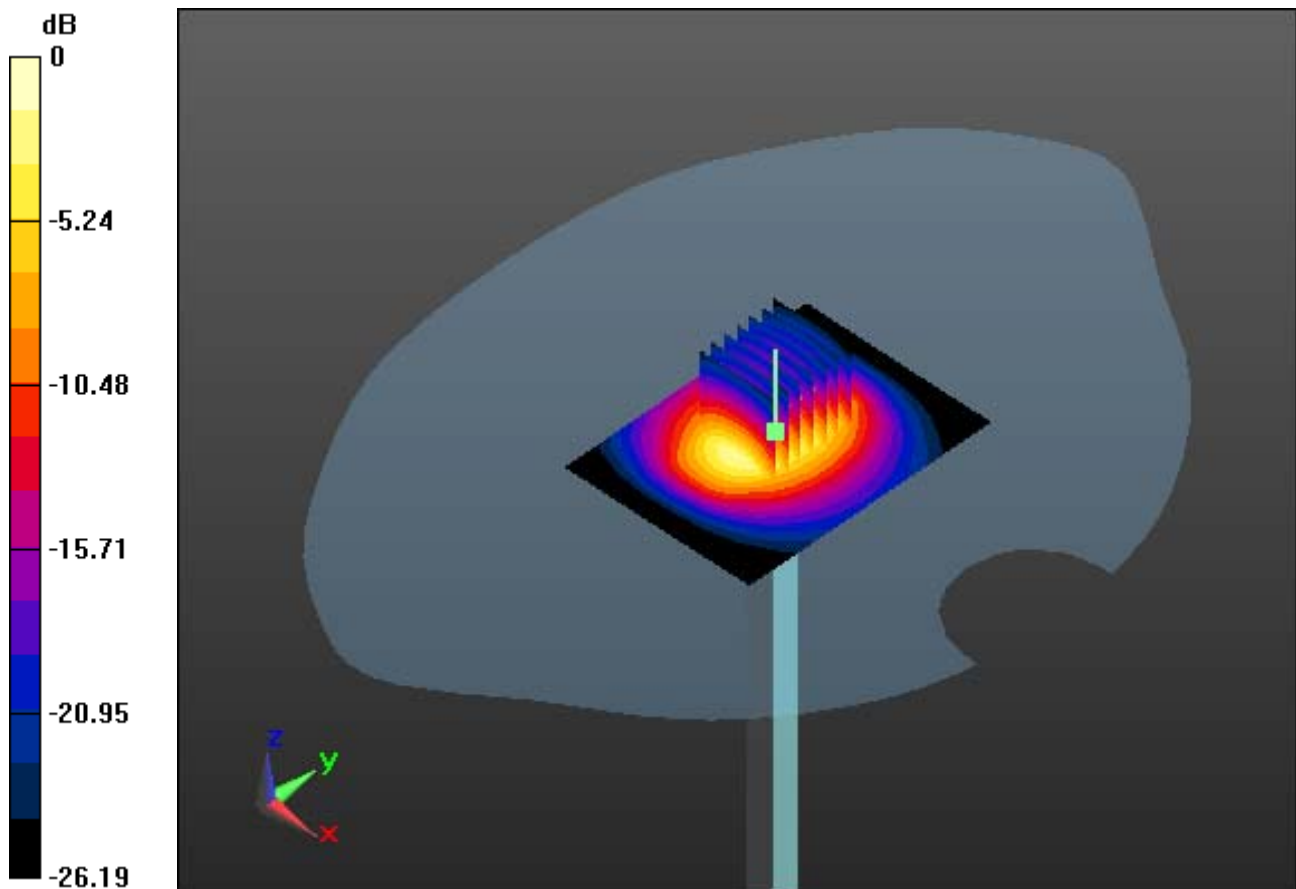
Test Date: 2014-08-20; Ambient Temp: 20.7; Tissue Temp: 20.9

2450 MHz System Verification

Area Scan (61x81x1): Interpolated grid: dx=12mm, dy=12mm

Zoom Scan (7x7x7)/Cube 0: Measurement grid: dx=5mm, dy=5mm, dz=5mm
Power Drift = 0.04 dB

Peak SAR (extrapolated) = 30.6 W/kg
SAR(1 g) = 13 W/kg; SAR(10 g) = 5.66 W/kg



0 dB = 19.1 W/kg

DT&C Co., Ltd.

DUT: Dipole 2450 MHz; Type: D2450V2; Serial: D2450V2 - SN:920

Communication System: CW; Frequency: 2450 MHz; Duty Cycle: 1:1
Medium parameters used: $f = 2450$ MHz; $\sigma = 1.965$ S/m; $\epsilon_r = 51.228$; $\rho = 1000$ kg/m³
Phantom section: Flat Section

DASY5 Configuration:

Probe: ES3DV3 - SN3328; ConvF(4.17, 4.17, 4.17); Calibrated: 2014-03-27; Electronics: DAE3 Sn519
Phantom: SAM with CRP_20120521; Type: SAM; Serial: 1679
Measurement SW: DASY52, Version 52.8 (7); SEMCAD X Version 14.6.10 (7164)

Test Date: 2014-08-20; Ambient Temp: 20.7; Tissue Temp: 20.9

2450 MHz System Verification

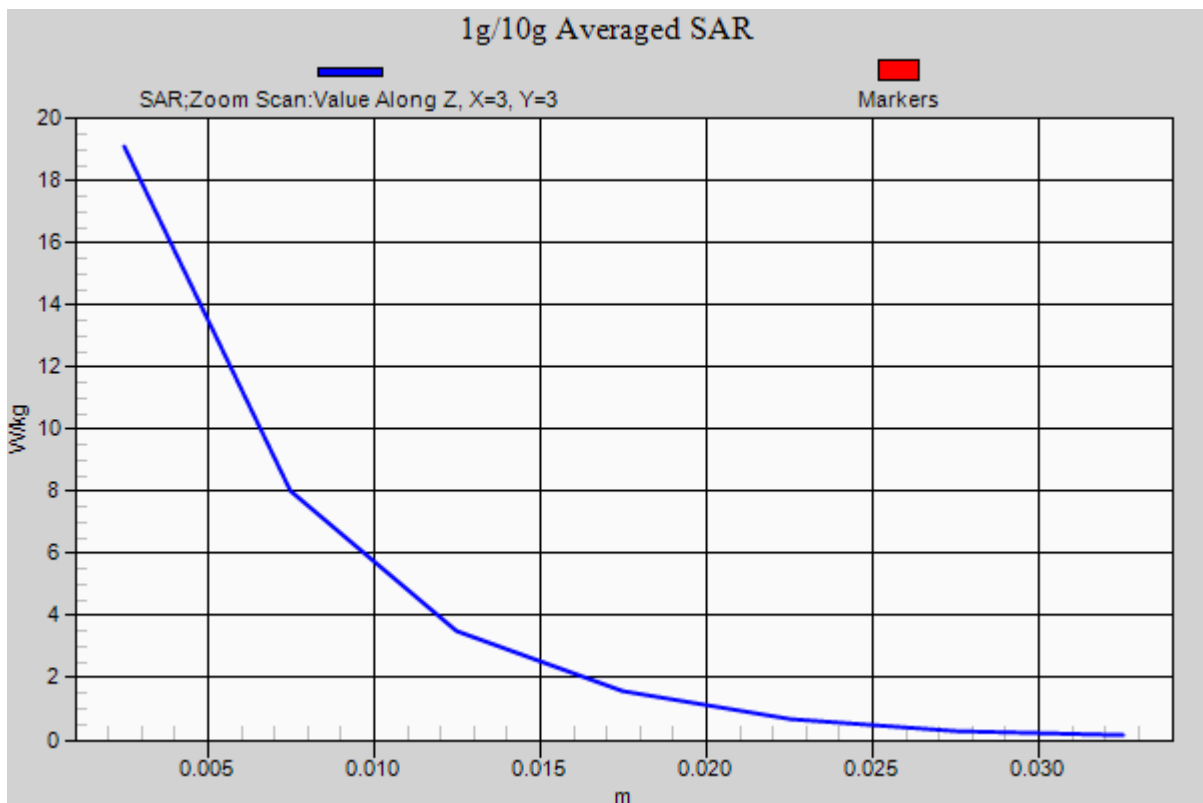
Area Scan (61x81x1): Interpolated grid: dx=12mm, dy=12mm

Zoom Scan (7x7x7)/Cube 0: Measurement grid: dx=5mm, dy=5mm, dz=5mm

Power Drift = 0.04 dB

Peak SAR (extrapolated) = 30.6 W/kg

SAR(1 g) = 13 W/kg; SAR(10 g) = 5.66 W/kg



DT&C Co., Ltd.

DUT: NAUTIZ X8; Type: PDA

Communication System: W-LAN (0); Frequency: 2437 MHz; Duty Cycle: 1:1
Medium parameters used: $f = 2437$ MHz; $\sigma = 1.791$ S/m; $\epsilon_r = 37.896$; $\rho = 1000$ kg/m³
Phantom section: Right Section

DASY5 Configuration:

Probe: ES3DV3 - SN3328; ConvF(4.5, 4.5, 4.5); Calibrated: 2014-03-27; Electronics: DAE3 Sn519
Phantom: SAM with CRP_20120521; Type: SAM; Serial: 1679
Measurement SW: DASY52, Version 52.8 (7); SEMCAD X Version 14.6.10 (7164)

Test Date: 2014-08-20; Ambient Temp: 20.7; Tissue Temp: 21.2

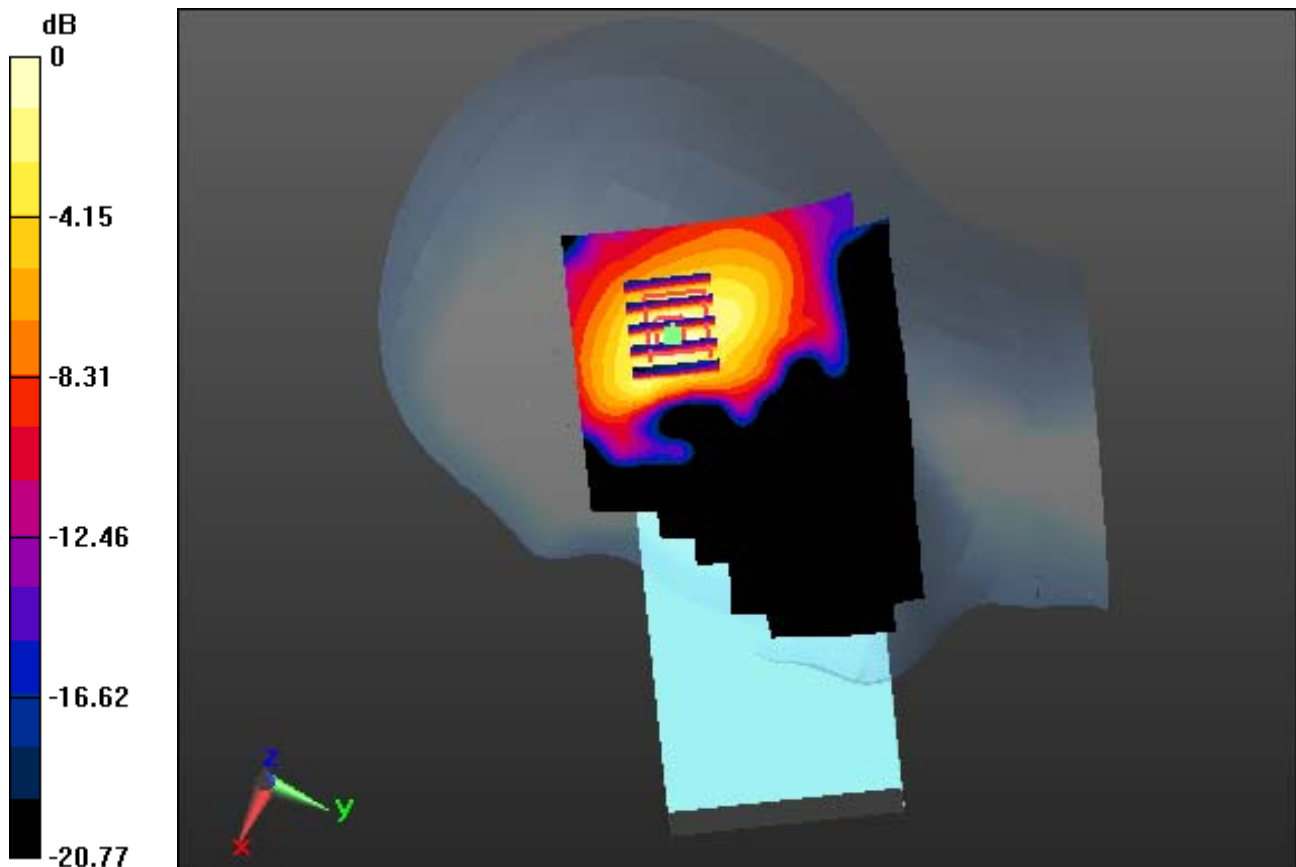
Right Touch, W-LAN(802.11b) Ch. 6, Ant Internal, Standard Battery

Area Scan (101x141x1): Interpolated grid: dx=12mm, dy=12mm

Zoom Scan (5x5x7)/Cube 0: Measurement grid: dx=8mm, dy=8mm, dz=5mm
Power Drift = 0.12 dB

Peak SAR (extrapolated) = 0.133 W/kg

SAR(1 g) = 0.065 W/kg; SAR(10 g) = 0.033 W/kg



0 dB = 0.0850 W/kg

DT&C Co., Ltd.

DUT: NAUTIZ X8; Type: PDA

Communication System: W-LAN (0); Frequency: 2437 MHz; Duty Cycle: 1:1
Medium parameters used: $f = 2437$ MHz; $\sigma = 1.791$ S/m; $\epsilon_r = 37.896$; $\rho = 1000$ kg/m³
Phantom section: Right Section

DASY5 Configuration:

Probe: ES3DV3 - SN3328; ConvF(4.5, 4.5, 4.5); Calibrated: 2014-03-27; Electronics: DAE3 Sn519
Phantom: SAM with CRP_20120521; Type: SAM; Serial: 1679
Measurement SW: DASY52, Version 52.8 (7); SEMCAD X Version 14.6.10 (7164)

Test Date: 2014-08-20; Ambient Temp: 20.7; Tissue Temp: 21.2

Right Touch, W-LAN(802.11b) Ch. 6, Ant Internal, Standard Battery

With Enlarge plot image

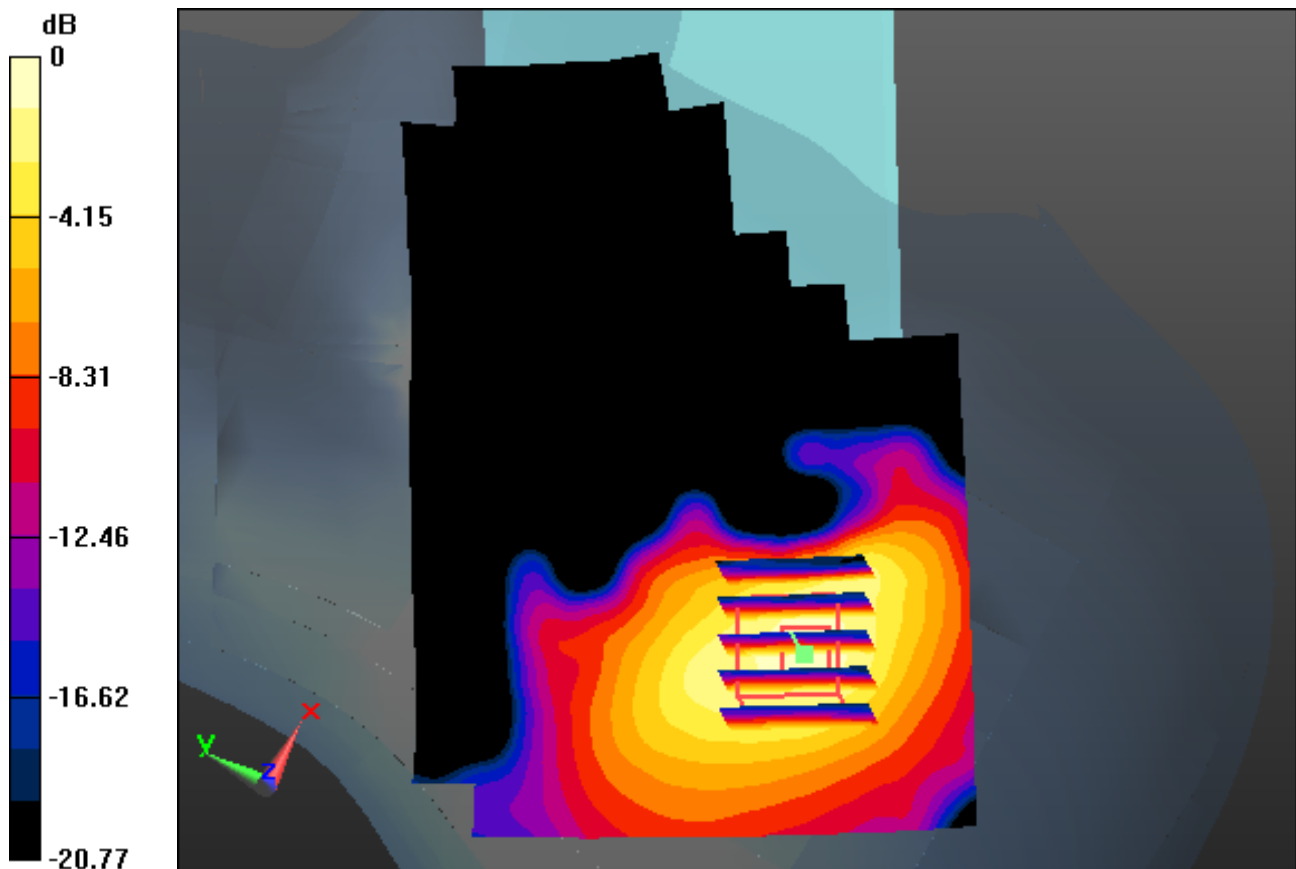
Area Scan (101x141x1): Interpolated grid: dx=12mm, dy=12mm

Zoom Scan (5x5x7)/Cube 0: Measurement grid: dx=8mm, dy=8mm, dz=5mm

Power Drift = 0.12 dB

Peak SAR (extrapolated) = 0.133 W/kg

SAR(1 g) = 0.065 W/kg; SAR(10 g) = 0.033 W/kg



0 dB = 0.0850 W/kg

DT&C Co., Ltd.

DUT: NAUTIZ X8; Type: PDA

Communication System: W-LAN (0); Frequency: 2437 MHz; Duty Cycle: 1:1
Medium parameters used: $f = 2437$ MHz; $\sigma = 1.791$ S/m; $\epsilon_r = 37.896$; $\rho = 1000$ kg/m³
Phantom section: Right Section

DASY5 Configuration:

Probe: ES3DV3 - SN3328; ConvF(4.5, 4.5, 4.5); Calibrated: 2014-03-27; Electronics: DAE3 Sn519
Phantom: SAM with CRP_20120521; Type: SAM; Serial: 1679
Measurement SW: DASY52, Version 52.8 (7); SEMCAD X Version 14.6.10 (7164)

Test Date: 2014-08-20; Ambient Temp: 20.7; Tissue Temp: 21.2

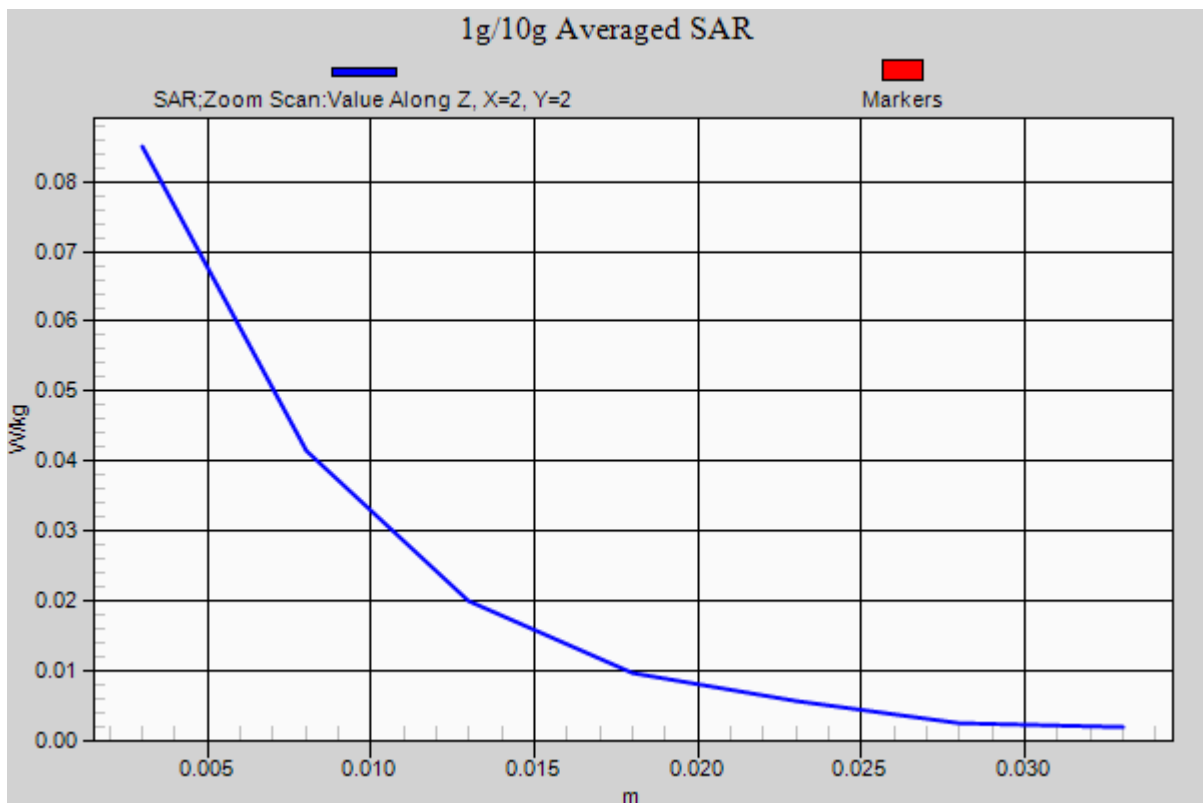
Right Touch, W-LAN(802.11b) Ch. 6, Ant Internal, Standard Battery

Area Scan (101x141x1): Interpolated grid: dx=12mm, dy=12mm

Zoom Scan (5x5x7)/Cube 0: Measurement grid: dx=8mm, dy=8mm, dz=5mm
Power Drift = 0.12 dB

Peak SAR (extrapolated) = 0.133 W/kg

SAR(1 g) = 0.065 W/kg; SAR(10 g) = 0.033 W/kg



DT&C Co., Ltd.

DUT: NAUTIZ X8; Type: PDA

Communication System: W-LAN (0); Frequency: 2412 MHz; Duty Cycle: 1:1
Medium parameters used: $f = 2412$ MHz; $\sigma = 1.922$ S/m; $\epsilon_r = 51.322$; $\rho = 1000$ kg/m³
Phantom section: Flat Section

DASY5 Configuration:

Probe: ES3DV3 - SN3328; ConvF(4.17, 4.17, 4.17); Calibrated: 2014-03-27; Electronics: DAE3 Sn519
Phantom: SAM with CRP_20120521; Type: SAM; Serial: 1679
Measurement SW: DASY52, Version 52.8 (7); SEMCAD X Version 14.6.10 (7164)

Test Date: 2014-08-20; Ambient Temp: 20.7; Tissue Temp: 20.9

1 cm space from Body, Front, W-LAN(802.11b) Ch. 1, Ant Internal

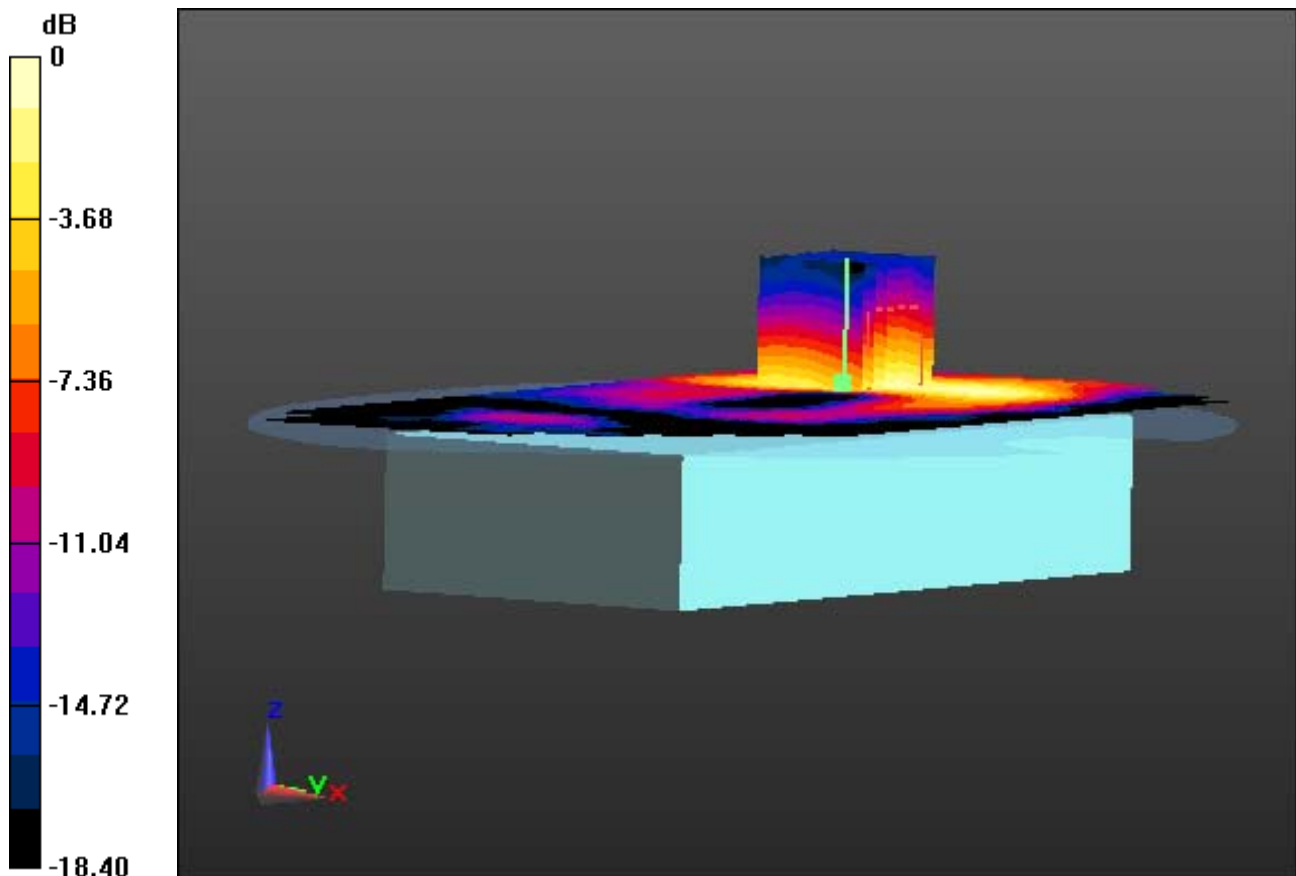
Area Scan (121x211x1): Interpolated grid: dx=12mm, dy=12mm

Zoom Scan (7x7x7)/Cube 0: Measurement grid: dx=5mm, dy=5mm, dz=5mm

Power Drift = 0.02 dB

Peak SAR (extrapolated) = 0.177 W/kg

SAR(1 g) = 0.096 W/kg; SAR(10 g) = 0.052 W/kg



0 dB = 0.119 W/kg

DT&C Co., Ltd.

DUT: NAUTIZ X8; Type: PDA

Communication System: W-LAN (0); Frequency: 2412 MHz; Duty Cycle: 1:1
Medium parameters used: $f = 2412$ MHz; $\sigma = 1.922$ S/m; $\epsilon_r = 51.322$; $\rho = 1000$ kg/m³
Phantom section: Flat Section

DASY5 Configuration:

Probe: ES3DV3 - SN3328; ConvF(4.17, 4.17, 4.17); Calibrated: 2014-03-27; Electronics: DAE3 Sn519
Phantom: SAM with CRP_20120521; Type: SAM; Serial: 1679
Measurement SW: DASY52, Version 52.8 (7); SEMCAD X Version 14.6.10 (7164)

Test Date: 2014-08-20; Ambient Temp: 20.7; Tissue Temp: 20.9

1 cm space from Body, Front, W-LAN(802.11b) Ch. 1, Ant Internal

With Enlarge plot image

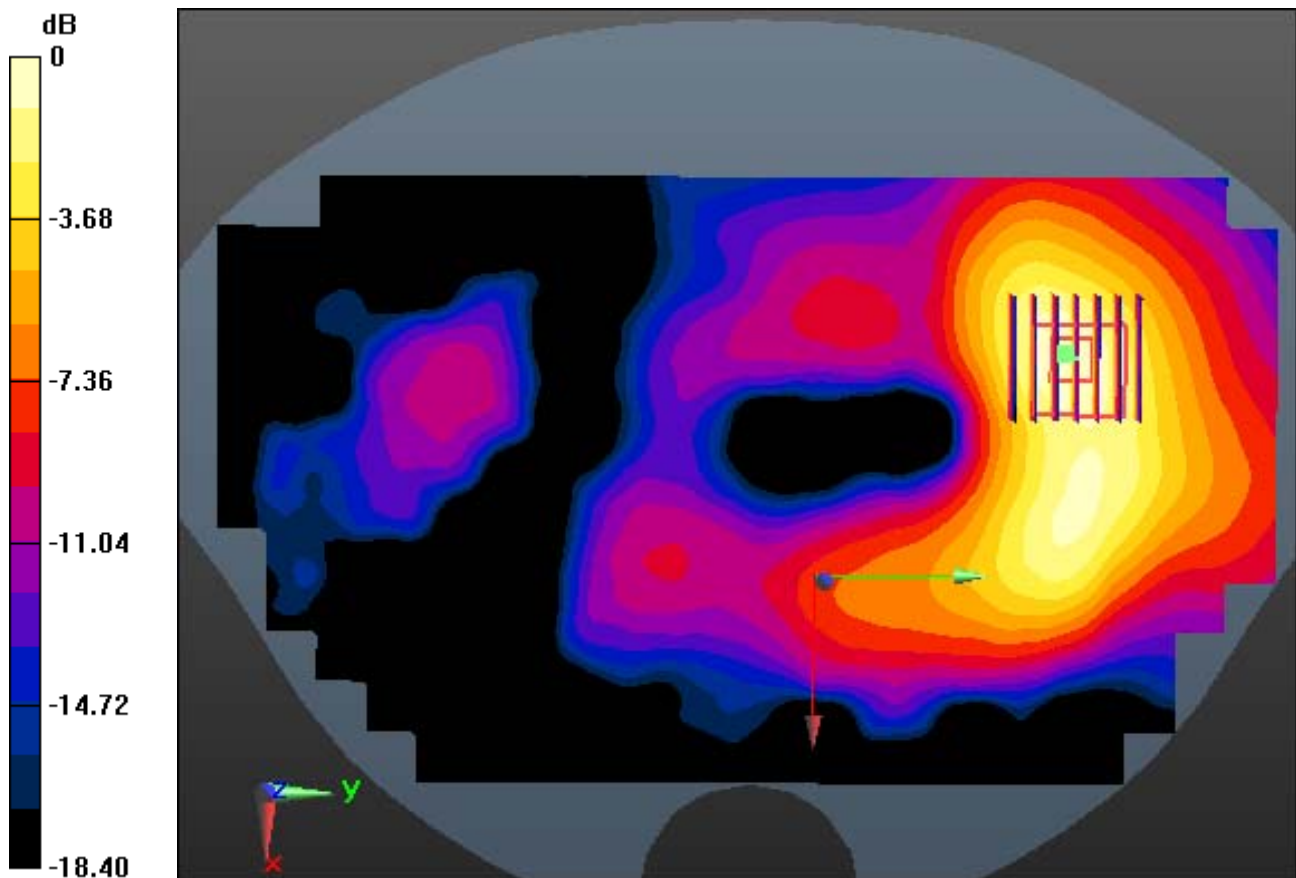
Area Scan (121x211x1): Interpolated grid: $dx=12$ mm, $dy=12$ mm

Zoom Scan (7x7x7)/Cube 0: Measurement grid: $dx=5$ mm, $dy=5$ mm, $dz=5$ mm

Power Drift = 0.02 dB

Peak SAR (extrapolated) = 0.177 W/kg

SAR(1 g) = 0.096 W/kg; SAR(10 g) = 0.052 W/kg



0 dB = 0.119 W/kg

DT&C Co., Ltd.

DUT: NAUTIZ X8; Type: PDA

Communication System: W-LAN (0); Frequency: 2412 MHz; Duty Cycle: 1:1
Medium parameters used: $f = 2412$ MHz; $\sigma = 1.922$ S/m; $\epsilon_r = 51.322$; $\rho = 1000$ kg/m³
Phantom section: Flat Section

DASY5 Configuration:

Probe: ES3DV3 - SN3328; ConvF(4.17, 4.17, 4.17); Calibrated: 2014-03-27; Electronics: DAE3 Sn519
Phantom: SAM with CRP_20120521; Type: SAM; Serial: 1679
Measurement SW: DASY52, Version 52.8 (7); SEMCAD X Version 14.6.10 (7164)

Test Date: 2014-08-20; Ambient Temp: 20.7; Tissue Temp: 20.9

1 cm space from Body, Front, W-LAN(802.11b) Ch. 1, Ant Internal

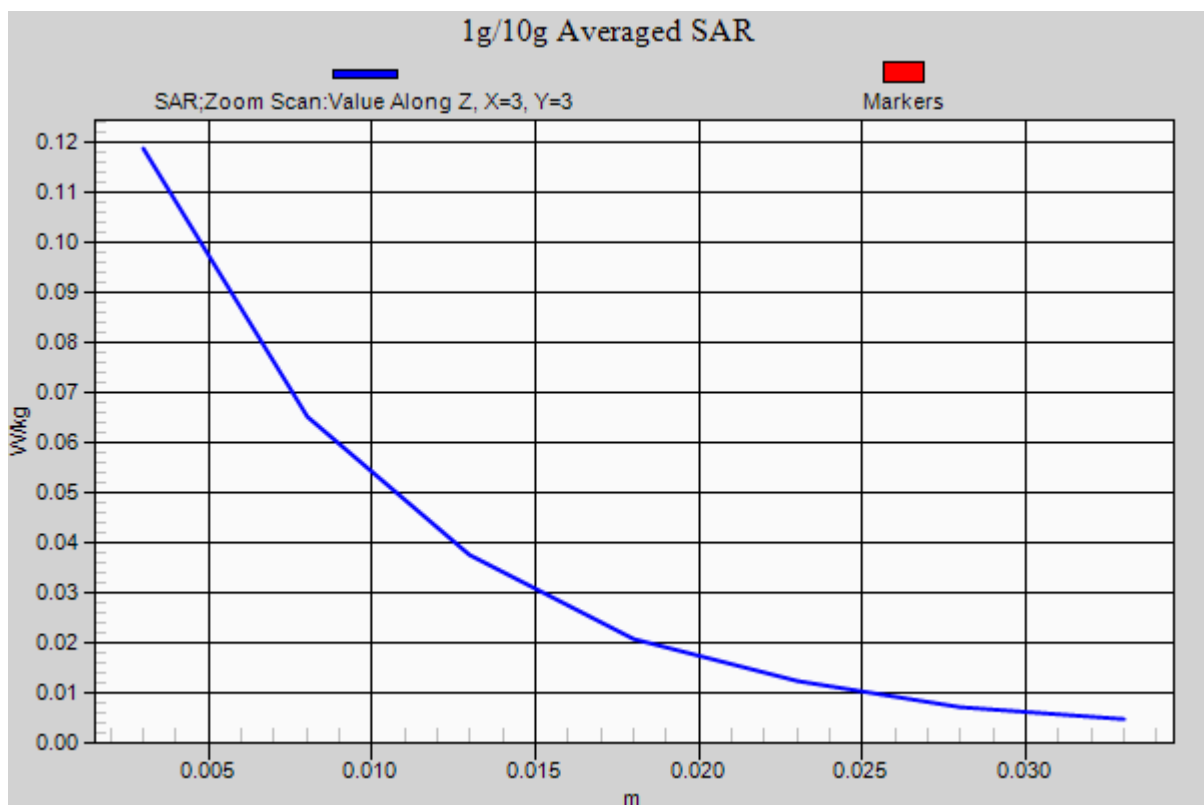
Area Scan (121x211x1): Interpolated grid: dx=12mm, dy=12mm

Zoom Scan (7x7x7)/Cube 0: Measurement grid: dx=5mm, dy=5mm, dz=5mm

Power Drift = 0.02 dB

Peak SAR (extrapolated) = 0.177 W/kg

SAR(1 g) = 0.096 W/kg; SAR(10 g) = 0.052 W/kg



DT&C Co., Ltd.

DUT: NAUTIZ X8; Type: PDA

Communication System: W-LAN (0); Frequency: 2412 MHz; Duty Cycle: 1:1
Medium parameters used: $f = 2412$ MHz; $\sigma = 1.922$ S/m; $\epsilon_r = 51.322$; $\rho = 1000$ kg/m³
Phantom section: Flat Section

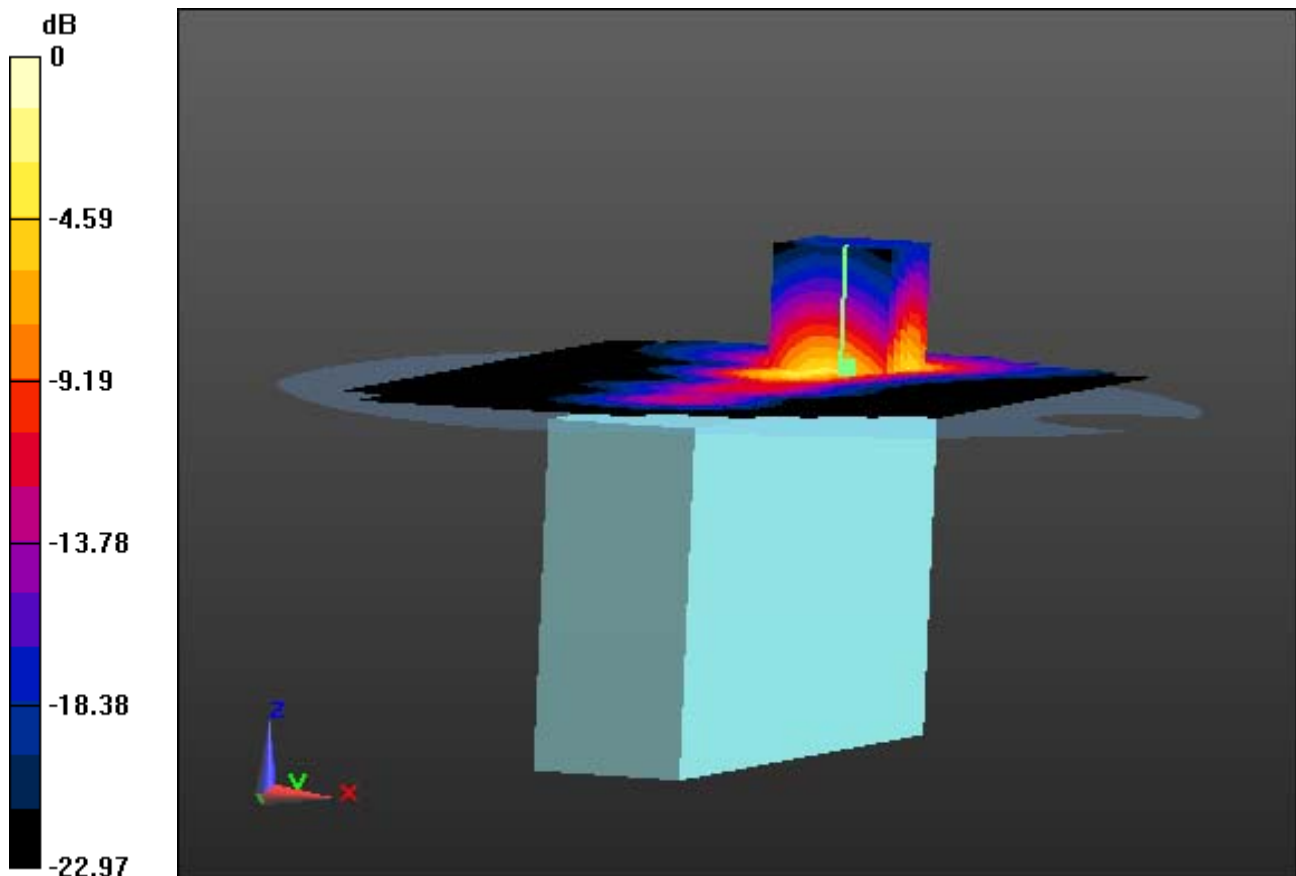
DASY5 Configuration:

Probe: ES3DV3 - SN3328; ConvF(4.17, 4.17, 4.17); Calibrated: 2014-03-27; Electronics: DAE3 Sn519
Phantom: SAM with CRP_20120521; Type: SAM; Serial: 1679
Measurement SW: DASY52, Version 52.8 (7); SEMCAD X Version 14.6.10 (7164)

Test Date: 2014-08-20; Ambient Temp: 20.7; Tissue Temp: 20.9

Touch from Body, Left, W-LAN(802.11b) Ch. 1, Ant Internal

Area Scan (121x211x1): Interpolated grid: dx=12mm, dy=12mm
Zoom Scan (7x7x7)/Cube 0: Measurement grid: dx=5mm, dy=5mm, dz=5mm
Power Drift = -0.15 dB
Peak SAR (extrapolated) = 1.82 W/kg
SAR(1 g) = 0.782 W/kg; SAR(10 g) = 0.346 W/kg



0 dB = 0.997 W/kg

DT&C Co., Ltd.

DUT: NAUTIZ X8; Type: PDA

Communication System: W-LAN (0); Frequency: 2412 MHz; Duty Cycle: 1:1
Medium parameters used: $f = 2412$ MHz; $\sigma = 1.922$ S/m; $\epsilon_r = 51.322$; $\rho = 1000$ kg/m³
Phantom section: Flat Section

DASY5 Configuration:

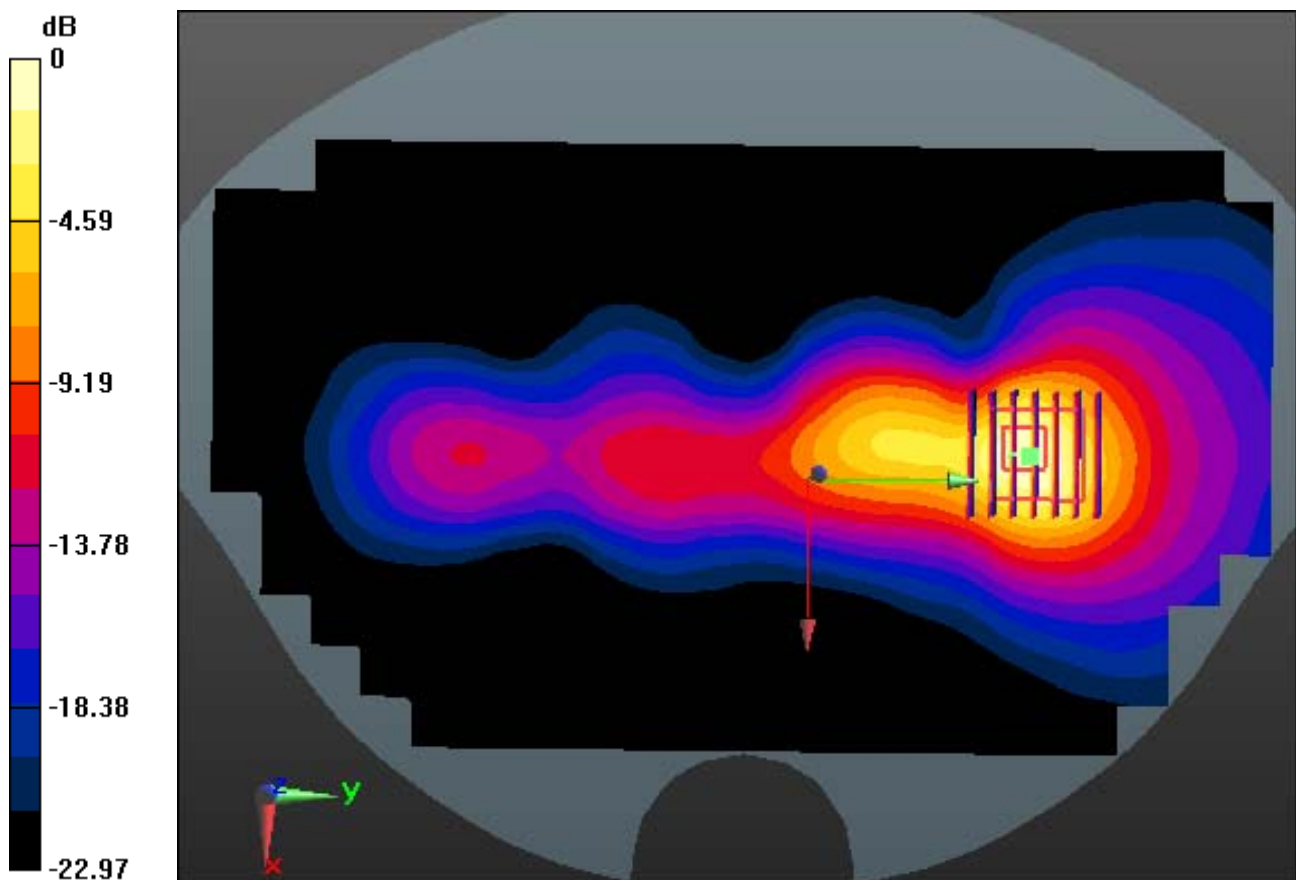
Probe: ES3DV3 - SN3328; ConvF(4.17, 4.17, 4.17); Calibrated: 2014-03-27; Electronics: DAE3 Sn519
Phantom: SAM with CRP_20120521; Type: SAM; Serial: 1679
Measurement SW: DASY52, Version 52.8 (7); SEMCAD X Version 14.6.10 (7164)

Test Date: 2014-08-20; Ambient Temp: 20.7; Tissue Temp: 20.9

Touch from Body, Left, W-LAN(802.11b) Ch. 1, Ant Internal

With Enlarge plot image

Area Scan (121x211x1): Interpolated grid: dx=12mm, dy=12mm
Zoom Scan (7x7x7)/Cube 0: Measurement grid: dx=5mm, dy=5mm, dz=5mm
Power Drift = -0.15 dB
Peak SAR (extrapolated) = 1.82 W/kg
SAR(1 g) = 0.782 W/kg; SAR(10 g) = 0.346 W/kg



0 dB = 0.997 W/kg

DT&C Co., Ltd.

DUT: NAUTIZ X8; Type: PDA

Communication System: W-LAN (0); Frequency: 2412 MHz; Duty Cycle: 1:1
Medium parameters used: $f = 2412$ MHz; $\sigma = 1.922$ S/m; $\epsilon_r = 51.322$; $\rho = 1000$ kg/m³
Phantom section: Flat Section

DASY5 Configuration:

Probe: ES3DV3 - SN3328; ConvF(4.17, 4.17, 4.17); Calibrated: 2014-03-27; Electronics: DAE3 Sn519
Phantom: SAM with CRP_20120521; Type: SAM; Serial: 1679
Measurement SW: DASY52, Version 52.8 (7); SEMCAD X Version 14.6.10 (7164)

Test Date: 2014-08-20; Ambient Temp: 20.7; Tissue Temp: 20.9

Touch from Body, Left, W-LAN(802.11b) Ch. 1, Ant Internal

Area Scan (121x211x1): Interpolated grid: dx=12mm, dy=12mm

Zoom Scan (7x7x7)/Cube 0: Measurement grid: dx=5mm, dy=5mm, dz=5mm

Power Drift = -0.15 dB

Peak SAR (extrapolated) = 1.82 W/kg

SAR(1 g) = 0.782 W/kg; SAR(10 g) = 0.346 W/kg

