

## System Check\_Head\_13MHz

**DUT: CLA13-1011**

Communication System: CW; Frequency: 13 MHz; Duty Cycle: 1:1

Medium: HSL\_13\_230321 Medium parameters used:  $f = 13$  MHz;  $\sigma = 0.757$  S/m;  $\epsilon_r = 53.7$ ;  $\rho = 1000$  kg/m<sup>3</sup>

Ambient Temperature : 23.5 °C; Liquid Temperature : 22.5 °C

DASY5 Configuration:

- Probe: EX3DV4 - SN3642; ConvF(15.17, 15.17, 15.17) @ 13 MHz; Calibrated: 2022/4/28
- Sensor-Surface: 1.4mm (Mechanical Surface Detection)
- Electronics: DAE4 Sn854; Calibrated: 2022/8/24
- Phantom: ELI v4.0; Type: QDOVA001BB; Serial: 1026
- Measurement SW: DASY52, Version 52.10 (4); SEMCAD X Version 14.6.14 (7483)

**Pin=250mW/Area Scan (81x81x1):** Interpolated grid: dx=1.500 mm, dy=1.500 mm

Maximum value of SAR (interpolated) = 0.502 W/kg

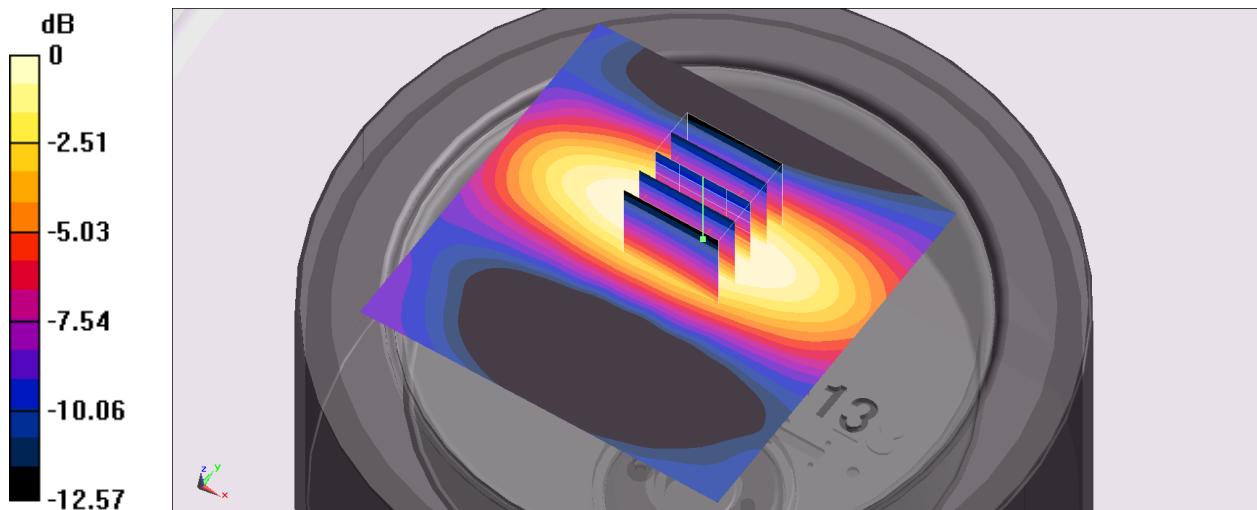
**Pin=250mW/Zoom Scan (5x5x7)/Cube 0:** Measurement grid: dx=8mm, dy=8mm, dz=5mm

Reference Value = 12.62 V/m; Power Drift = -0.16 dB

Peak SAR (extrapolated) = 0.261 W/kg

**SAR(1 g) = 0.143 W/kg; SAR(10 g) = 0.088 W/kg**

Maximum value of SAR (measured) = 0.210 W/kg



0 dB = 0.437 W/kg = -3.60 dBW/kg