

Telecommunication Laboratories,
Chunghwa Telecom Co., Ltd.

Description of the device:

The Tablet PC is made by WINMATE Communication INC.

Device Name : Rugged Tablet PC

Model No.: ALGIZ 7X, CS25 plus, CS25 LRBT plus, CS25 GNSS plus, CC61 plus,
CC60 plus

FCC ID.: YY3-ALGIZ7X

Applicant: Handheld Group AB.

Adress: Kinnegatan 17, 53133, Lidköping, Sweden

Test Lab. : Telecommunication Laboratories, Chunghwa Telecom Co., Ltd.

A. Antenna separation distances: Please refer to the pictures below.

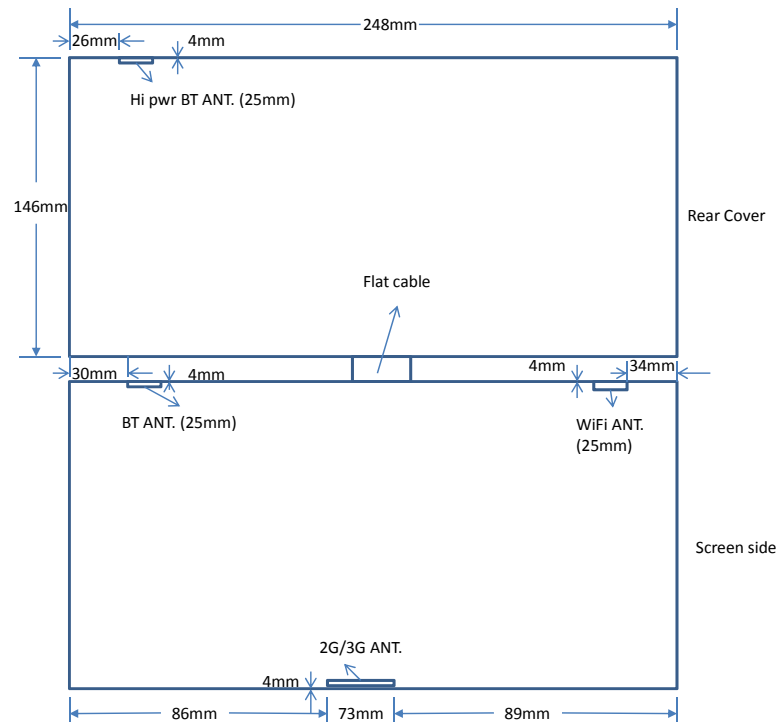
- | | |
|-----------------------------------|--------|
| 1. 2G/3G ANT. To BT Hi power ANT. | 5.2cm |
| 2. 2G/3G ANT. To WiFi ANT. | 10.8cm |
| 3. 2G/3G ANT. To BT ANT. | 10.2cm |
| 4. WiFi ANT. To BT Hi power ANT. | 10.1cm |
| 5. WiFi ANT. To BT ANT. | 13.4cm |
| 6. BT ANT. To BT Hi power ANT. | 13.8cm |

B. Summary of which transmitters simultaneously transmit:

1. 2G/3G
2. WiFi
3. BT Hi power

4. BT MPE analysis is required according to FCC 47 CFR §2.1093 and 1.1310.
no SAR test is required.

C. Antenna positions relative to all external edges/faces



Reference to the KDB 447498, 450824, 616217, 248227, 616217, 648474, 941225, FCC DA02-1438 would be followed when SAR testing.

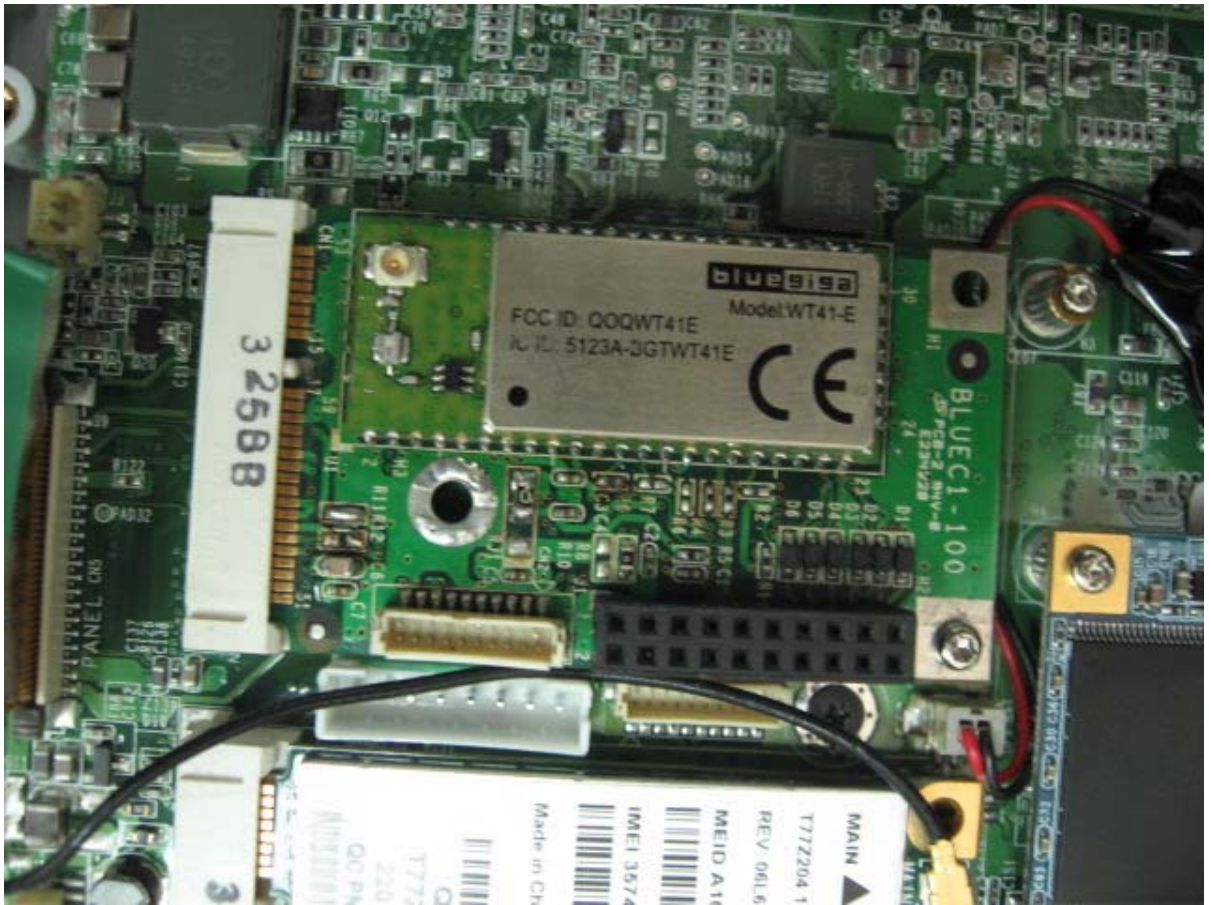
1. PCB View



2. Main(WiFi) Aux(BT)



3. BT Hi PWR Module



4. MAIN(WIFI) ANT Distance



5. AUX(BT) ANT Distance



6. BT Hi PWR ANT Distance



7. 2G/3G Module



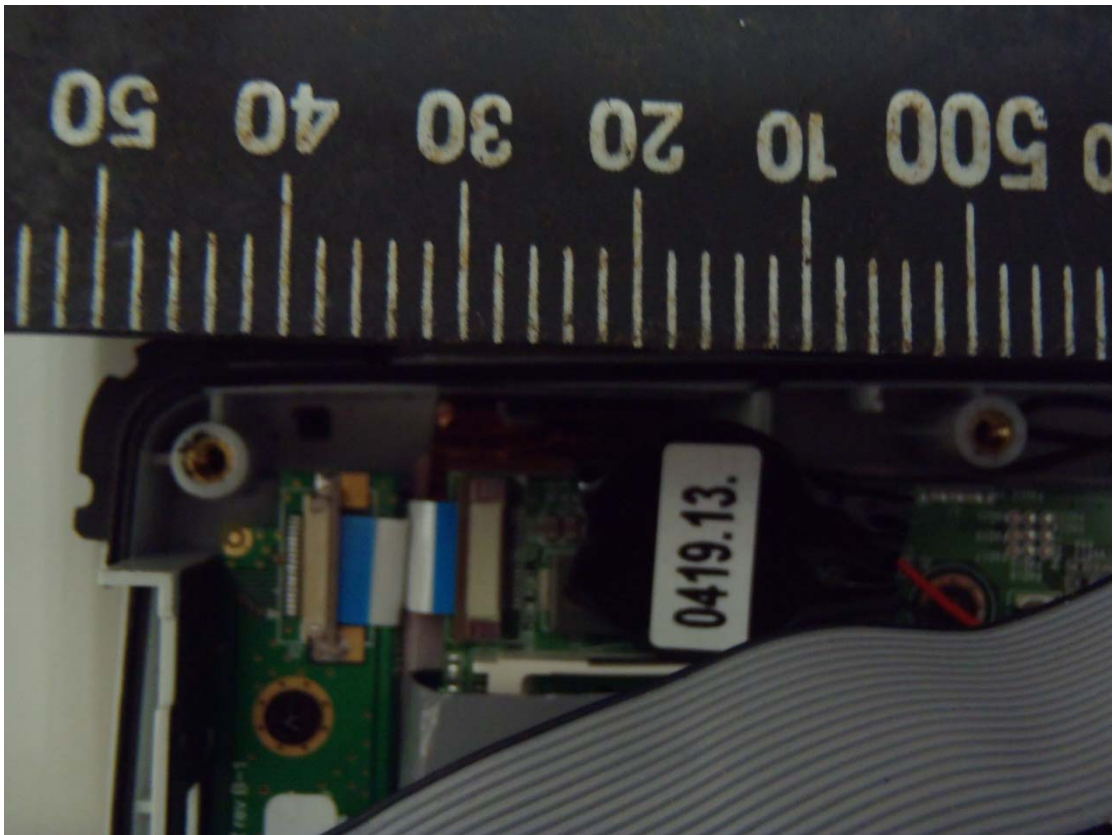
8. 2G/3G ANT Distance

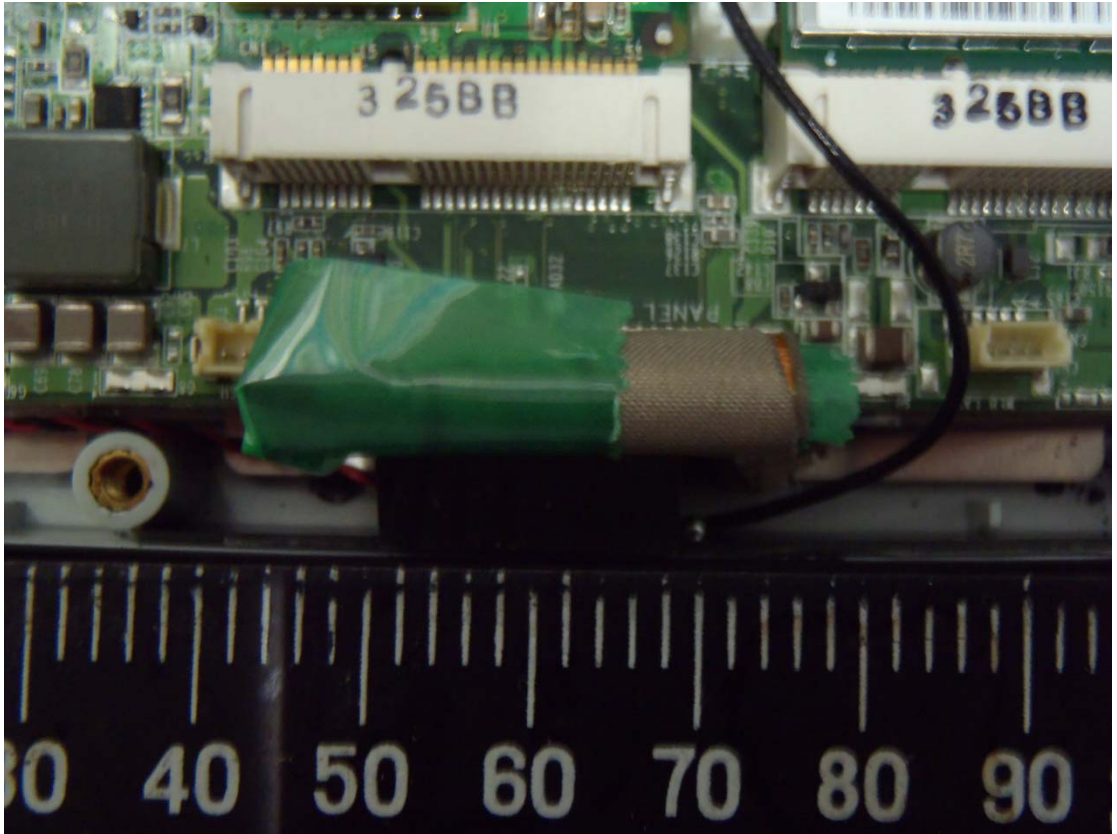


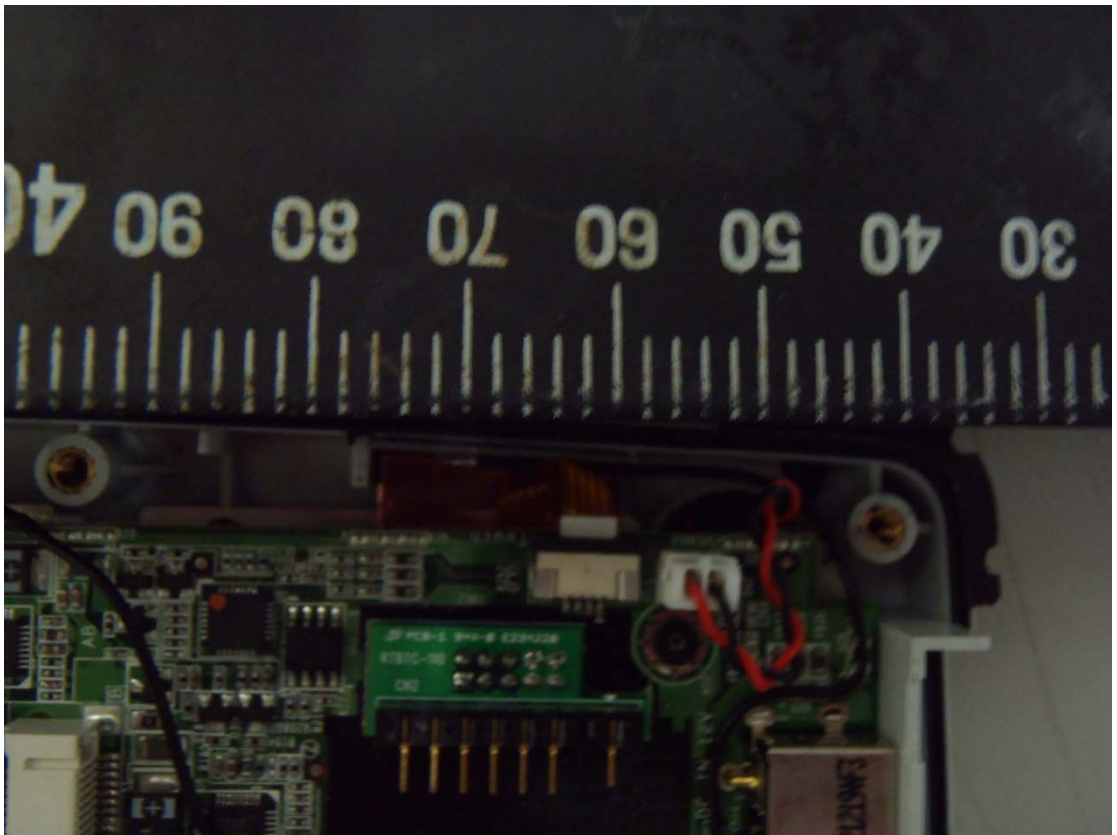
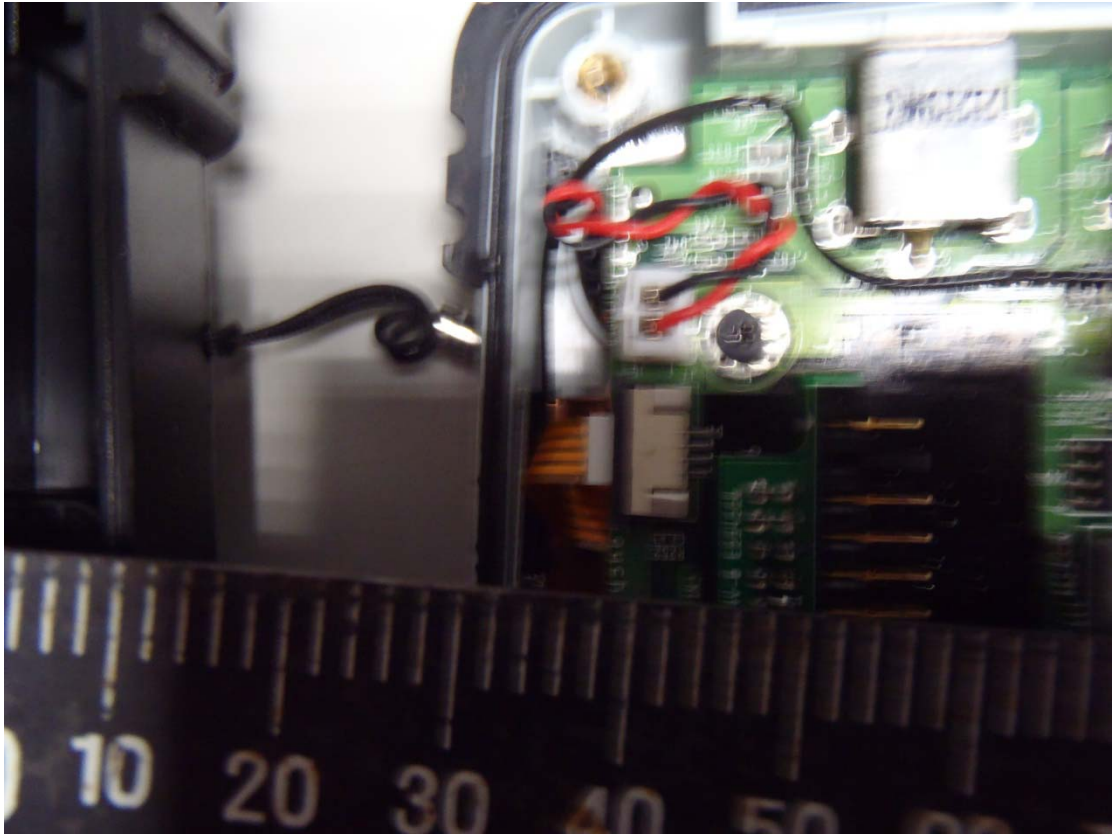
9. Screen diagonal distance = 17.6cm (<7.9")



10. Antenna positions relative to all external edges/faces and
Dimensions of attached bumpers







11. main user interface



Technical Manager: Ming-Hong Ko 

Test Engineer: Shin-yen Du  Sep. 18 2013

Telecommunication Laboratories, Chunghwa Telecom Co., Ltd.