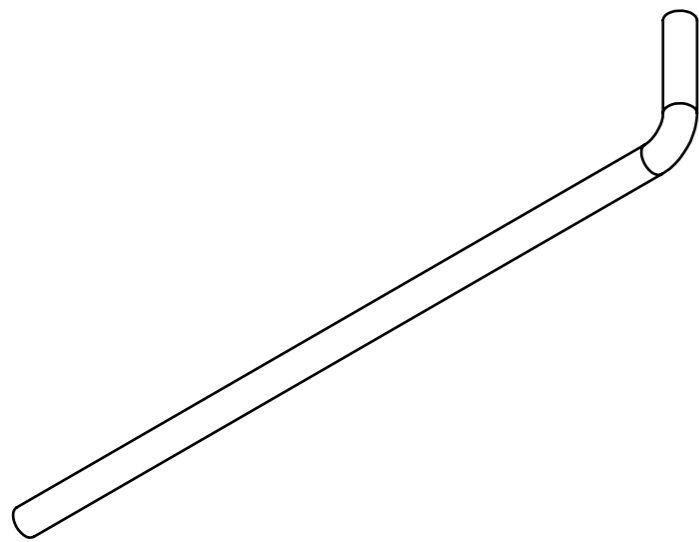
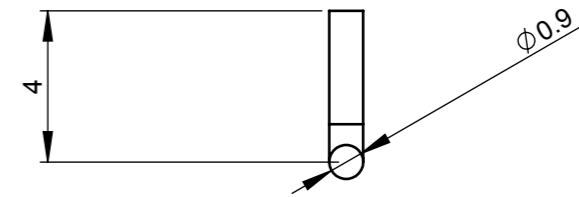
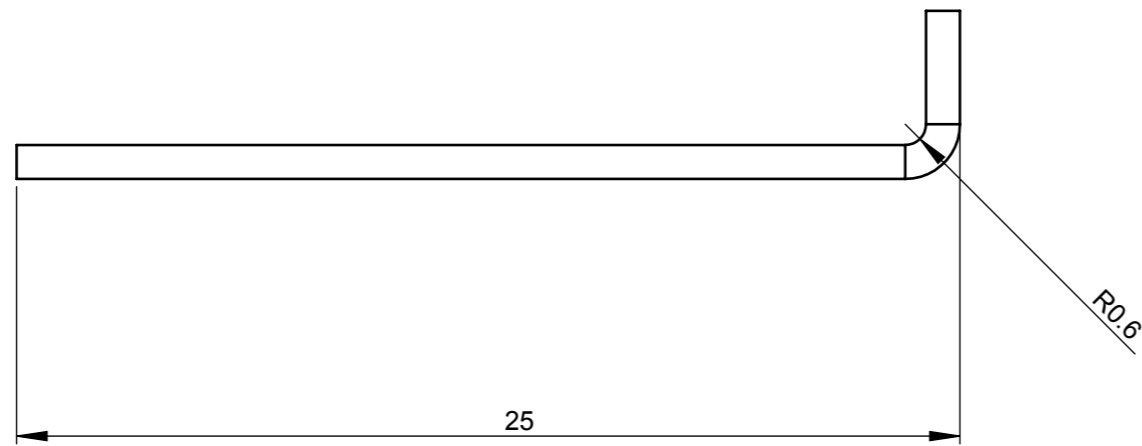


ZONE	REV.	DESCRIPTION	ECO	DATE	APPROVED
	A	PRODUCT RELEASE			



UNLESS OTHERWISE SPECIFIED: DIMENSIONS ARE IN MILLIMETERS SURFACE FINISH: TOLERANCES: LINEAR: ± 0.1 ANGULAR: ± 1.0		FINISH: NICKEL PLATING: 10 MICRON MIN.		DEBUR AND BREAK SHARP EDGES		DO NOT SCALE DRAWING		REVISION A		

PROPRIETARY AND CONFIDENTIAL THE INFORMATION CONTAINED IN THIS DRAWING IS THE SOLE PROPERTY OF ES.LTD. ANY REPRODUCTION IN PART OR AS A WHOLE WITHOUT THE WRITTEN PERMISSION OF ES.LTD. IS PROHIBITED.						MATERIAL: Brass WIRE EXTERNAL DIA: 0.9 (MM) COLOR:		DWG NO. M800IPD 2.4Gantenna V1		A3
						WEIGHT: GR		SCALE: 5:1		SHEET 1 OF 1