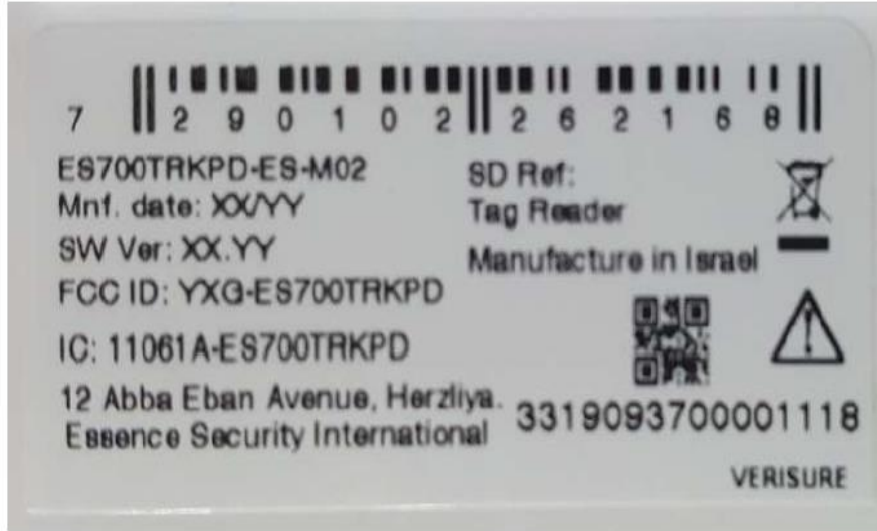


### Label

The label with **FCC ID: YXG-ES700TRKPD** and **IC: 11061A- ES700TRKPD** is affixed on the rear side of the device. The label material is PVC with a permanent adhesive.



### Label location



The statement according to FCC part 15 §15.19(a)(3) is placed in User's Guide (Application exhibit User\_manual\_33716).