

Quick Installation Guide

BTW 5

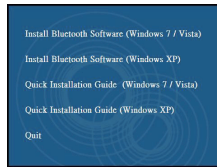
PC System Requirements

- one available USB port
- Windows XP

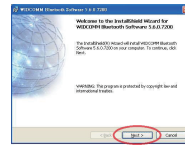
Step 1 : Software Setup

Note: please do not insert the USB adapter into the USB port prior to software installation.

Step 1. Put the CD-Rom into the computer's CD drive and click the software installation button for "Windows XP" system.



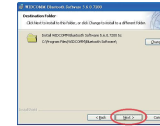
Step 2. The software InstallShield wizard window appears, click "Next" to start the installation.



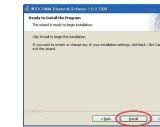
Step 3. Choose "I accept the terms in the license agreement" then click "Next" to continue.



Step 4. Specify the location where the software files will be installed on hard drive, then click "Next" to continue.



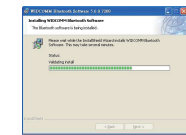
Step 5. Confirm the software is ready to be installed and click "Install".



Step 6. During the installation process, you may be prompted to insert your USB adapter as below window, please insert your USB adapter as below window, please insert your USB adapter and click "OK", or click "Cancel" to continue installation without the USB adapter.



Step 7. The InstallShield Wizard will continue to install the Bluetooth software.



Step 8. Click "Finish" to confirm the completion of the software installation.



Step 2 : Hardware Setup

Insert the USB adapter directly to a available USB connector on your computer, the system should register a new usb device found. Please follow below instructions to complete the Bluetooth installation on your PC :

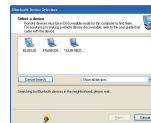
Step 1. Initialize Bluetooth setup wizard and choose the location of Bluetooth hardware installation, click "Next" to continue next steps until the Bluetooth icon built up at tool-bar or front-table of your computer system.



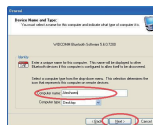
Step 3. Click "Next" to configure the Bluetooth service.



Step 4. Click "Next" to configure the Bluetooth service. Please enable the remote Bluetooth device which you want to make connection, then the device would be searched.



Step 2. Setup your computer device and type for recognition, click "Next" to continue Bluetooth setup.



Step 5. The PIN code shown automatically, please check the same with paired devices, then click "Next" to continue.



Step 6. Click "Finish" to confirm the USB adapter with paired device connect done.



***To Start / Stop the Bluetooth** When the mini adaptor is plugged, you can Right-click the Bluetooth icon in the tool-bar:



select "Start the Bluetooth Device" to turn on the adaptor (icon color changes to white)
select "Stop the Bluetooth Device" to turn on the adaptor (icon color changes to red)

This device complies with Part 15 of the FCC Rules. Operation is subject to the following two conditions :

**(1) device may not cause harmful interference, and
(2) this device must accept any interference received, including interference that may cause undesired operation.**

Caution : changes or modifications not expressly approved by the party responsible for compliance could void the user's authority to operate the equipment.



Federal Communication Commission Interference Statement

This equipment has been tested and found to comply with the limits for a Class B digital device, pursuant to Part 15 of the FCC Rules. These limits are designed to provide reasonable protection against harmful interference in a residential installation.

This equipment generates, uses and can radiate radio frequency energy and, if not installed and used in accordance with the instructions, may cause harmful interference to radio communications. However, there is no guarantee that interference will not occur in a particular installation. If this equipment does cause harmful interference to radio or television reception, which can be determined by turning the equipment off and on, the user is encouraged to try to correct the interference by one of the following measures:

- . Reorient or relocate the receiving antenna.
- . Increase the separation between the equipment and receiver.
- . Connect the equipment into an outlet on a circuit different from that to which the receiver is connected.
- . Consult the dealer or an experienced radio/TV technician for help.

FCC Caution: To assure continued compliance, any changes or modifications not expressly approved by the party responsible for compliance could void the user's authority to operate this equipment. (Example - use only shielded interface cables when connecting to computer or peripheral devices).

FCC Radiation Exposure Statement

This equipment complies with FCC RF radiation exposure limits set forth for an uncontrolled environment.

This transmitter must not be co-located or operating in conjunction with any other antenna or transmitter.