

Antenna Specification

The antenna adopts a small onboard antenna, and due to the limited PCB area, the gain of the antenna will be smaller than other antennas. The communication distance can reach about 15-20 meters. The size of the PCB antenna is 11.4 * 2.84mm, and the thickness of the PCB is 1.6mm. Specific dimensions

The antenna is shown in Figure 1, and the physical object is shown in Figure 2.

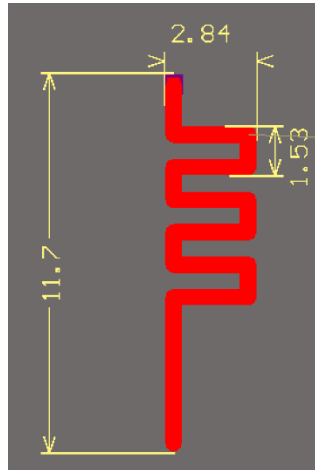


Figure 1



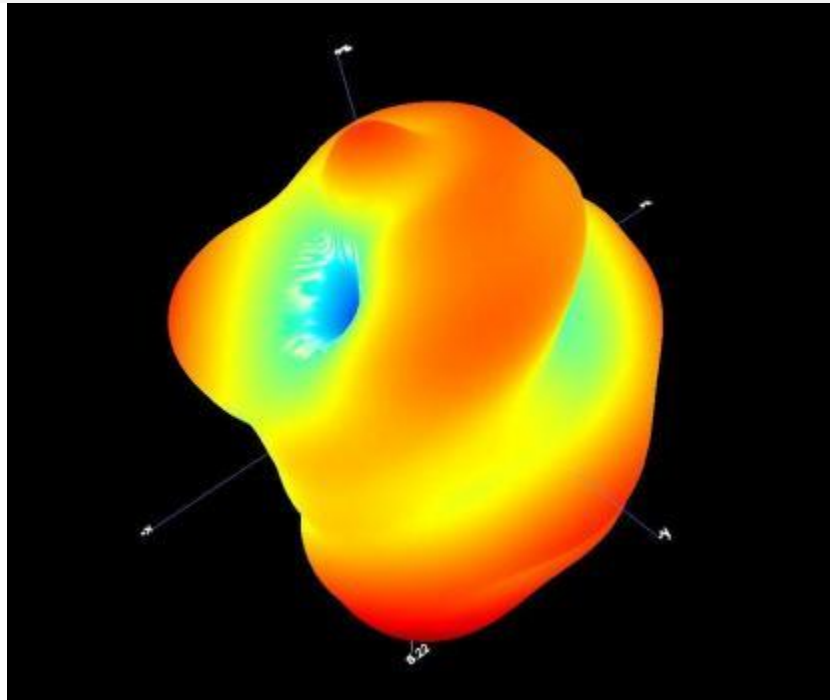
Figure 2

A.1 Gain and Efficiency

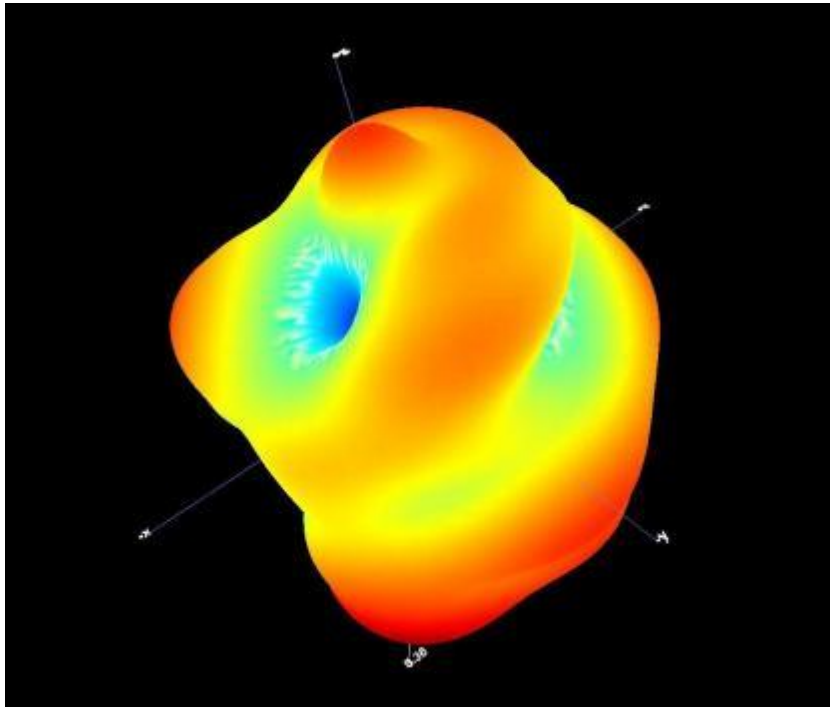
Frequency	Gain (dBi)	Efficiency (%)
2403MHz	2.22	47
2441MHz	1.89	42
2580MHz	1.74	40

3D Pattern

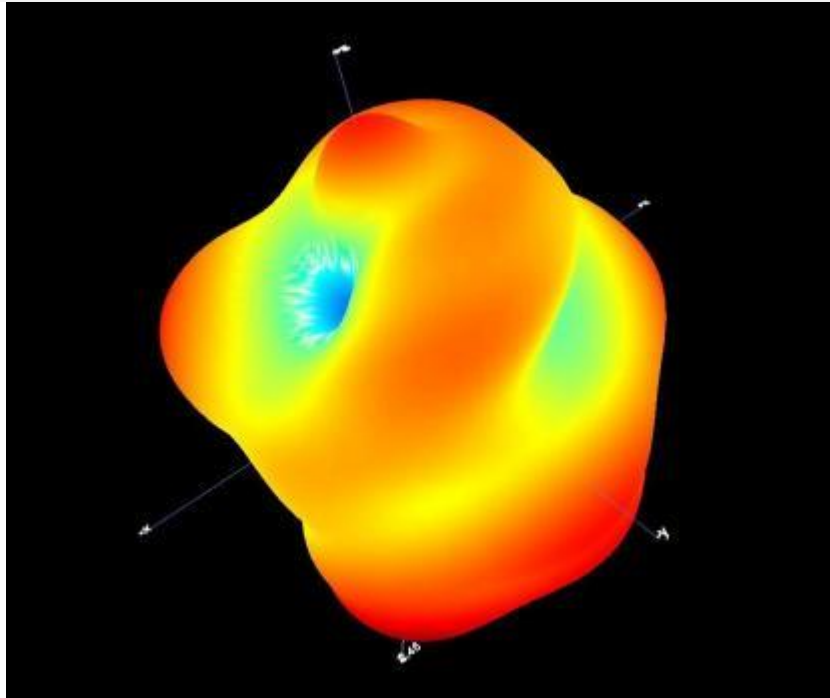
3D Pattern for 2403MHz



3D Pattern for 2441MHz

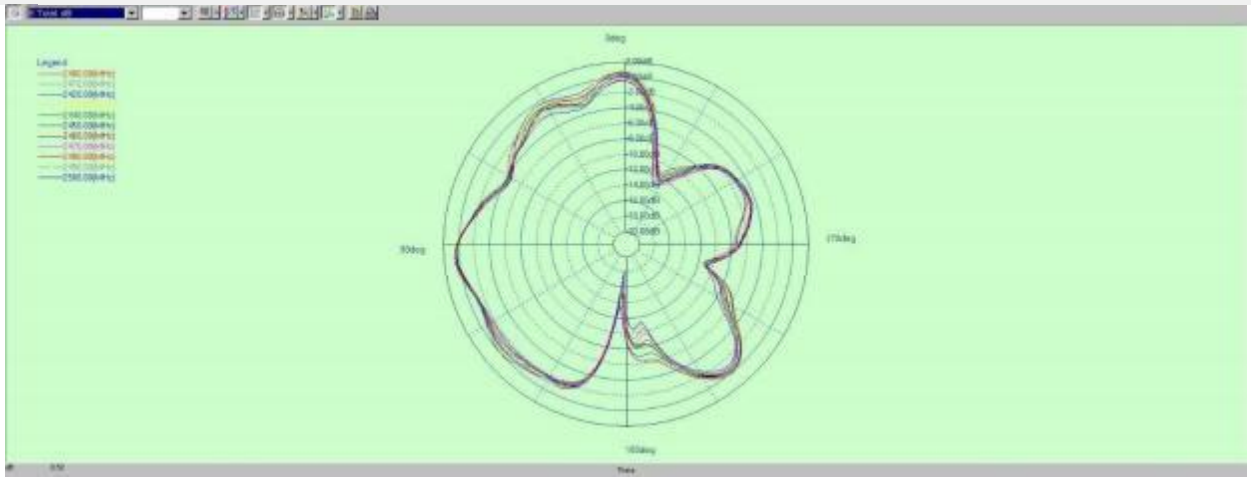


3D Pattern for 2480MHz

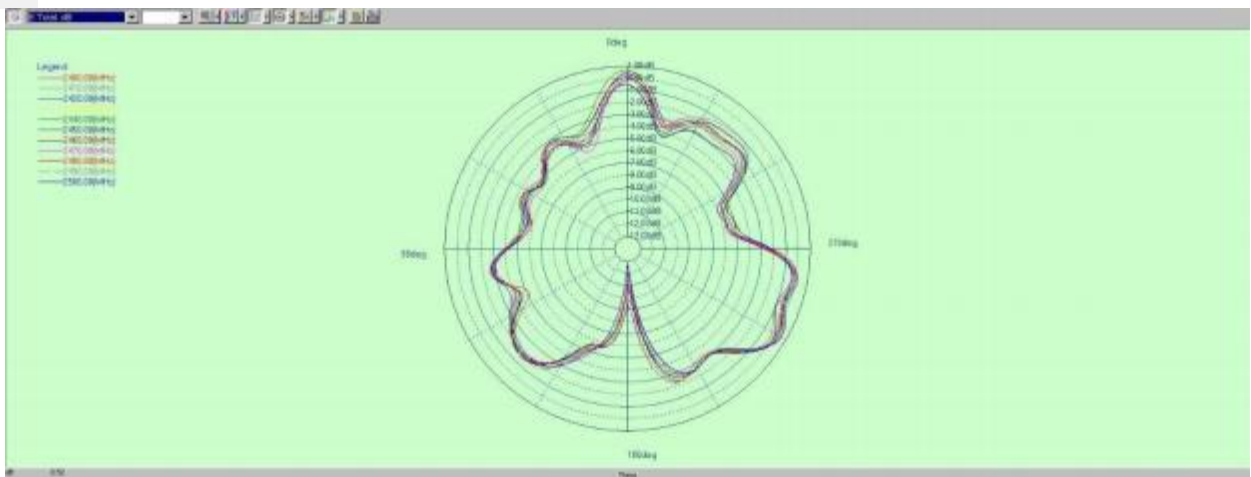


1D Radiation Pattern

PHI=0



PHI=90



THETA=90

