

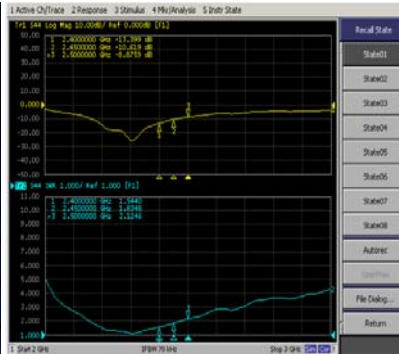
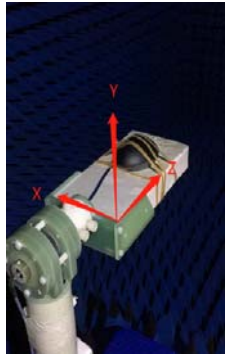
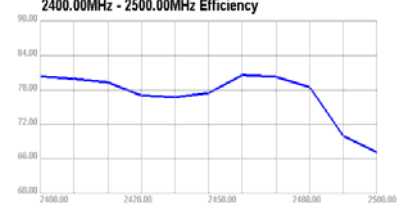
Passive Test For WiFi2.4												
Freq (MHz)	Effi (%)	Effi (dB)	Gain (dB)	Gain (dB)	UHS (%)	DHHS (%)	Max (dB)	Min (dB)	Directivity (dB)	Beamwidth (3dB)	AttH (dB)	AttV (dB)
2400	80.38	-0.97	2.43	0.28	38.864	41.511	2.43	-16.25	3.38	45	49.04	48.91
2410	79.93	-0.97	2.29	0.14	38.853	41.083	2.29	-16.84	3.26	45	49.02	48.93
2420	79.33	-1.01	2.18	0.03	38.311	41.023	2.18	-16.84	3.19	45	49.02	48.97
2430	77.04	-1.13	2.09	-0.06	36.871	40.173	2.09	-18.31	3.22	105	49.13	49.11
2440	76.7	-1.15	2.15	0	36.508	40.196	2.15	-20.58	3.3	105	49.13	49.11
2450	77.47	-1.11	2.21	0.06	37.087	40.382	2.21	-23.25	3.31	105	49.39	49.35
2460	80.59	-0.94	2.29	0.14	39.071	41.521	2.29	-24.47	3.23	90	49.39	49.35
2470	80.3	-0.95	2.3	0.15	39.664	40.631	2.3	-23.47	3.25	120	49.39	49.3
2480	78.51	-1.05	2.13	-0.03	39.381	39.129	2.13	-21.1	3.18	120	49.44	49.35
2490	69.99	-1.55	1.51	-0.64	35.355	34.636	1.51	-20.39	3.06	120	49.19	49.13
2500	67.13	-1.73	1.12	-1.03	33.666	33.466	1.12	-19.95	2.85	120	49.33	49.32

Application Information	
D4Version	4.95.303
TotalTime	13m 13s 771ms
AdditionalInfo	NULL

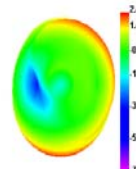
2400.00MHz - 2500.00MHz Gain



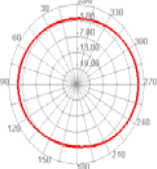
2400.00MHz - 2500.00MHz Efficiency



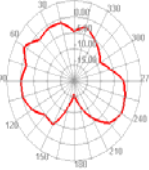
2400.000MHz



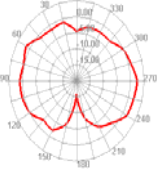
2400.000MHz H



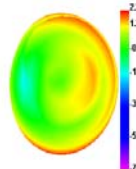
2400.000MHz E1



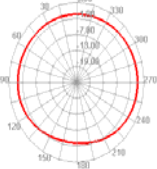
2400.000MHz E2



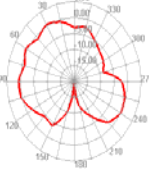
2450.000MHz



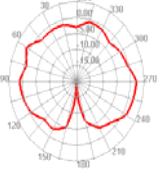
2450.000MHz H



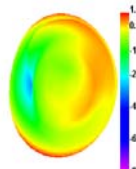
2450.000MHz E1



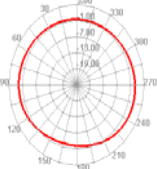
2450.000MHz E2



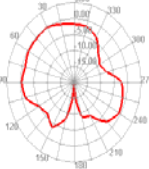
2500.000MHz



2500.000MHz H



2500.000MHz E1



2500.000MHz E2

