

SAMPLE SAMPLE SAMPLE  
SAMPLE SAMPLE SAMPLE  
SAMPLE SAMPLE SAMPLE  
SAMPLE SAMPLE SAMPLE  
SAMPLE SAMPLE SAMPLE  
SAMPLE SAMPLE SAMPLE  
SAMPLE SAMPLE SAMPLE  
SAMPLE SAMPLE SAMPLE  
SAMPLE SAMPLE SAMPLE  
SAMPLE SAMPLE SAMPLE



**Bluetooth Mouse  
M-CB01BR  
User Manual**

Thank you very much for purchasing this product.

\* "M-CB01BR" series is referred to as "this product" in this manual except in some cases.

## Precautions



This manual describes the necessary precautions you should take for safe operation of this product.

Observe these precautions carefully to avoid personal injury, damage, fire, and other problems.


## ■ Meaning of each symbol

### **Warning**


Failure to observe precautions carries the possibility of serious personal injury or death due to fire, electric shock, or other causes.


### **Caution**

Failure to observe precautions may result in personal injury due to electric shock or other causes, and may damage other equipment.

 Prohibited action

 Mandatory action


 Situation that needs attention

 Notes and reference information

## **Warning**

 **If a foreign object (water, metal chips) enters this product, stop using immediately and remove the batteries.**

Continuing to use the product as it is may cause a fire or electric shock.

 **If this product behaves abnormally, such as by generating heat or smoke, or giving off strange smells, cease usage immediately and shut down the connected device. After confirming that the product is not generating heat that will cause burns, remove the batteries from the product. Afterwards, please contact your dealer.**

Continuing to use the product as it is may cause a fire or electric shock.

 **Please do not drop or hit this product.**

**In the event that this product is damaged, cease usage immediately. Turn OFF the power and remove the battery from the mouse. Afterwards, please contact your dealer.**

Fires or electric shocks may occur if this product is used when damaged.

 **Do not attempt to disassemble, modify or repair this product.**

Doing so may cause a fire, electric shock, or product damage.

Malfunctions are not covered under warranty.

 **Do not put this product in fire.**

Doing so may cause a fire or injury.

breakage may cause fire or injury.

---

## Caution

### Do not place this product in any of the following environments:

- In a car exposed to sunlight or a place exposed to direct sunlight.
  - In a place that becomes hot, such as around a heater.
  - In a moist place or a place where condensation may occur.
  - In an uneven place or a place exposed to vibration.
  - In a place where a magnetic field is generated (such as near a magnet.)
  - In a dusty place.
- 

### This product does not have a waterproof structure. Use or store in a place not exposed to liquids such as water.

Any liquid such as rain, water spray, juice, coffee, steam, and sweat, may cause this product to breakdown.

---

- ###
- Only use this product with PCs, smartphones, tablets, and video game systems.
  - Do not use this product with any device that may significantly be affected in the case of this product malfunctioning.
  - If this product is used on a transparent surface such as glass or a highly reflective surface such as a mirror, the optical sensor will not function correctly and the mouse cursor movement will become unstable.
  - \* Although the sensor light is not visible, please note that looking directly into the sensor may hurt your eyes.
  - When you no longer need to use this product and the battery, be sure to dispose of them in accordance with the local ordinances and laws of your area.

## ■ Batteries

## Caution

### Please use either AAA alkaline batteries, AAA manganese batteries, or AAA nickel-metal hydride batteries.

### Remove the batteries when you are not using this product for long periods of time.

This may cause leakage or malfunction.

---

## ■ Cleaning the Product

If the body of this product becomes dirty, wipe with a soft, dry cloth.



Using a volatile liquid such as paint thinner, benzene or alcohol may affect the material quality and discolor this product.

Please note the following for disinfection.



Gently soak a cleaning cloth, such as a microfiber cloth, in the disinfectant solution. Make sure there are no loose droplets and gently wipe the product using the cloth.

After wiping, dry thoroughly and wipe off any residual liquid.

\* Do not spray any liquid onto the product directly. Doing so can cause electric malfunction.



## Important



**Do not spray any liquid directly onto the product.**

Doing so can cause electric malfunction.



**Do not use organic solvents or ultraviolet light.**

Usage can result in deterioration of the housing components or paint, which can cause damage to the exterior.



**We recommend using disposable gloves.**



**When using any alcohol based products, please check that it is appropriate for the specific purpose and that it is used properly.**



**Please note that in the event that damage or abnormal operation to the product is caused by the cleaning process, the customer will be fully responsible for the cost of repair.**



**We recommend disinfecting your hands before and after using PCs and peripheral devices that are used by multiple people in order to prevent the spread of infection through the equipment.**



**Please turn off any connected devices.**

\* Please turn off connected devices in sleep or hibernation mode.

\* Please unplug the AC adapter and power cable from the power outlet.

## Cautions for Wireless Equipment

This product is a wireless device that can use the entire 2.4 GHz band, and is able to avoid the band wave of mobile identification equipment. The GFSK method is adopted as the radio wave method, and the interference distance is 10 m. The 2.4 GHz band is also used in medical devices, Bluetooth, and


wireless LAN devices of the IEEE 802.11b/11g/11n standards.

Before using this product, check that there are no other "radio stations"\* operating nearby.

If electromagnetic interference occurs between this product and other "radio stations", move this product to another location or stop using this product.

\* Other "radio stations" refer to industrial, scientific and medical devices using the 2.4 GHz band, the same as this product, other radio stations of this type, licensed radio station premises for a mobile object identification system that is used in factory production lines, certain non-licensed low power radio stations, and amateur radio stations.

## Warning

 Do not use in equipment which may cause serious effects due to it malfunctioning. There are rare cases in which an external radio wave at the same frequency, or the radio wave emitted from a mobile phone, causes this product to malfunction, slow down, or fail to operate.

Do not use this product in places where radio wave usage is prohibited, such as hospitals. Radio waves of this product may affect electronic devices and medical devices (for example pacemakers).

Due to the possibility of hindering safe navigation of aircraft, use of wireless mouse in aircraft is prohibited by the Civil Aeronautics Act. Turn off the power of the wireless mouse before boarding and do not use after boarding.

\* ELECOM is not liable for any accidents or any indirect or consequential damage incurred due to the failure of this product.

## How to use

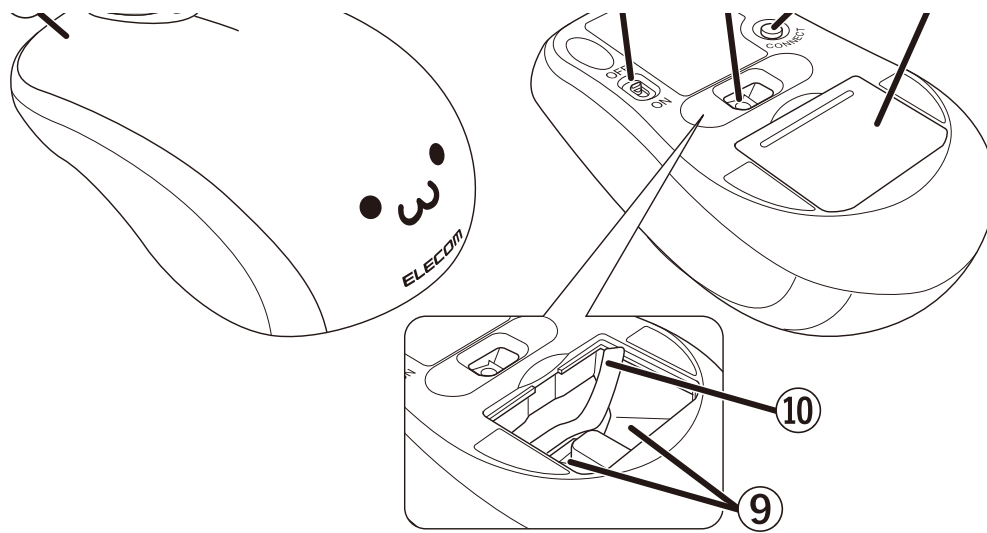
### Items included in this package

The following are included in this package. Verify the package to ensure all items are accounted for prior to using this product. While every effort has been made to ensure proper packaging, in the event that any shortage or damage is discovered, please contact the retailer where the product was purchased.

- **Mouse x 1**
- **AAA alkaline dry cell batteries for confirming operability x 2**

### Name and function of each part





① **Left button**

To left click on your PC.

② **Right button**

To right click on your PC.

③ **Wheel**

Rotate forward and backward or click like a button to operate your PC.

④ **LED light**

- During pairing standby state, the LED blinks blue.
- The LED will light up blue for a period of time when the mouse is switched ON.
- The LED will blink blue during use when the battery level is low.

⑤ **Power switch**

Turns the mouse power on (ON) and off (OFF).

⑥ **Optical sensor**

This sensor will detect the mouse movements when you move the mouse.

\* Although the sensor light is not visible, please note that looking directly into the sensor may hurt your eyes.

⑦ **Pairing button**

Pair the mouse with your device's Bluetooth module or a Bluetooth adapter.

⑧ **Battery cover**

Remove this cover and put in the battery.

⑨ **Battery storage compartment**

Holds the battery.

⑩ **Battery removal sheet**

Used to remove the battery from the battery storage compartment.

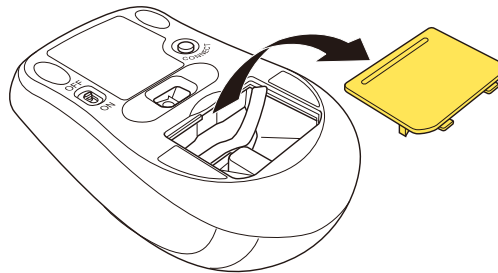


### Chrome OS

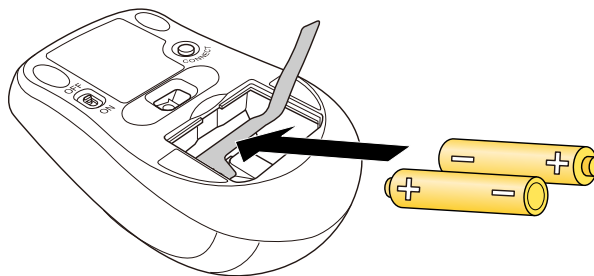


#### 1. Insert battery

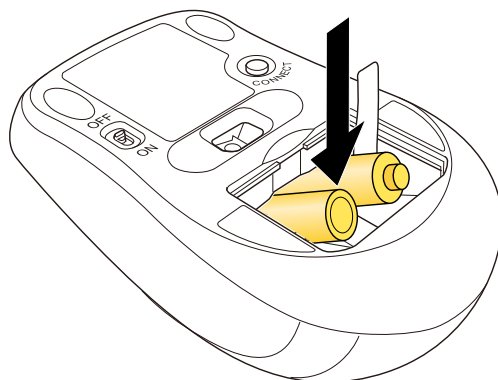
1) Remove the battery cover.



2) Insert the battery at an angle with the battery removal sheet underneath.



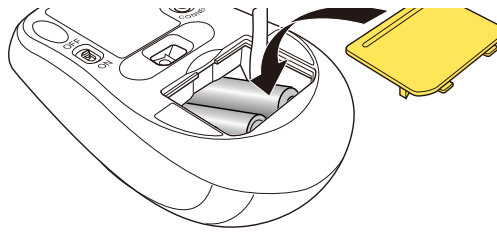
3) Push the other end in.



- Ensure that the batteries are inserted with the positive (+) and negative (-) terminals oriented correctly.
- Do not use different types of batteries or use a mixture of old and new batteries. The batteries may leak and cause malfunction.

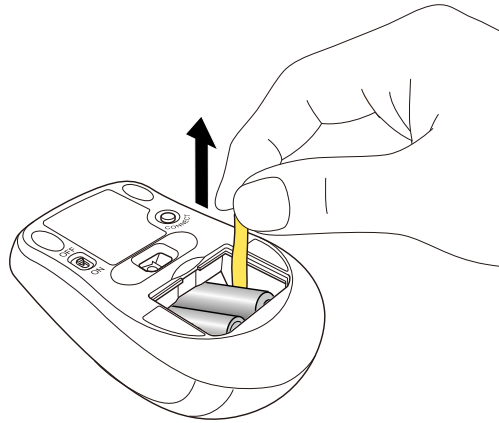
4) Replace the battery cover.





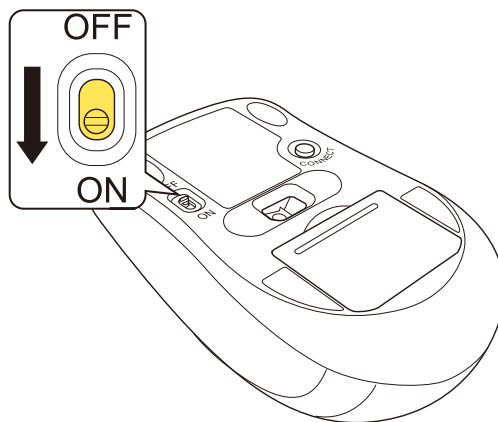
### Replacing the batteries...

Pull the battery removal sheet to remove the batteries and replace them with new ones.



## 2. Turn the power ON

1) Slide the power switch on the underside of the product to the ON position.



The LED will light up blue for a period of time.

\* When the batteries are running low, the LED will blink blue for a period of time.



### Power-saving mode

When the mouse is left untouched for a fixed period of time while the power is ON, it automatically shifts to power-saving mode.

The mouse returns from power-saving mode when it is moved.

\* Mouse operation may be unstable for 2-3 seconds after returning from power-saving mode.

## 3. Pairing with a PC

- Pairing involves registering Bluetooth devices (in this case, this product and your device) with each other, and authorizing a connection between them.

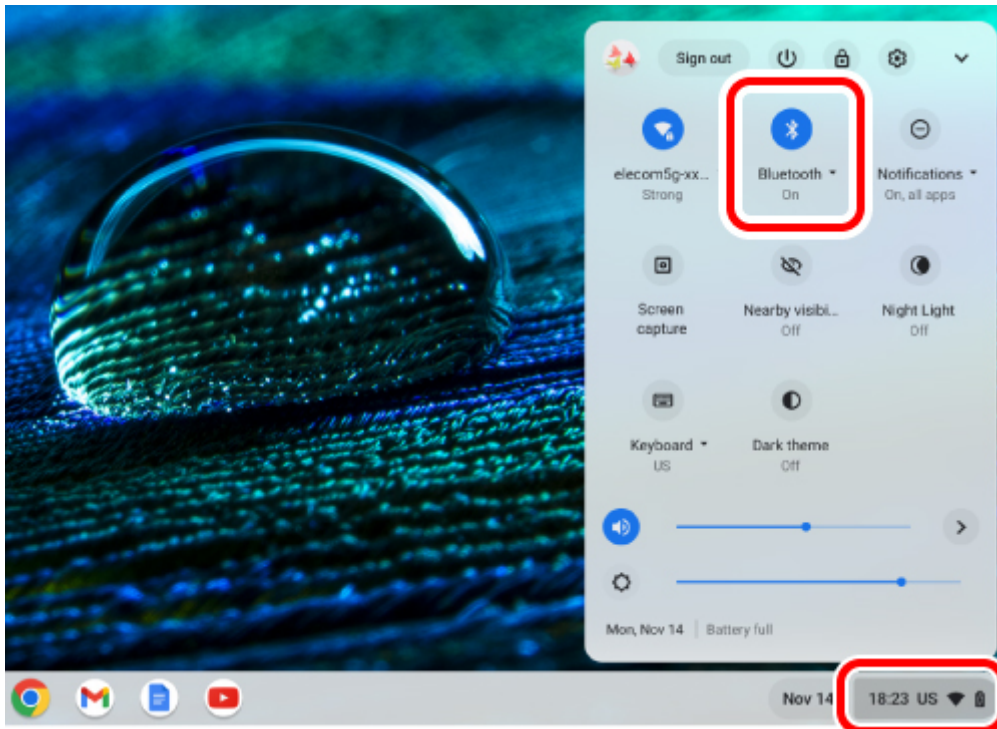


- This section covers Chrome OS standard Bluetooth functions. Depending on your device, unique Bluetooth functions may be used. Please read the respective manuals for each function.
- Please carry out the pairing operation using your current mouse or touchpad on your device.
- The following instructions are for Chrome OS (107.0.5304.110).

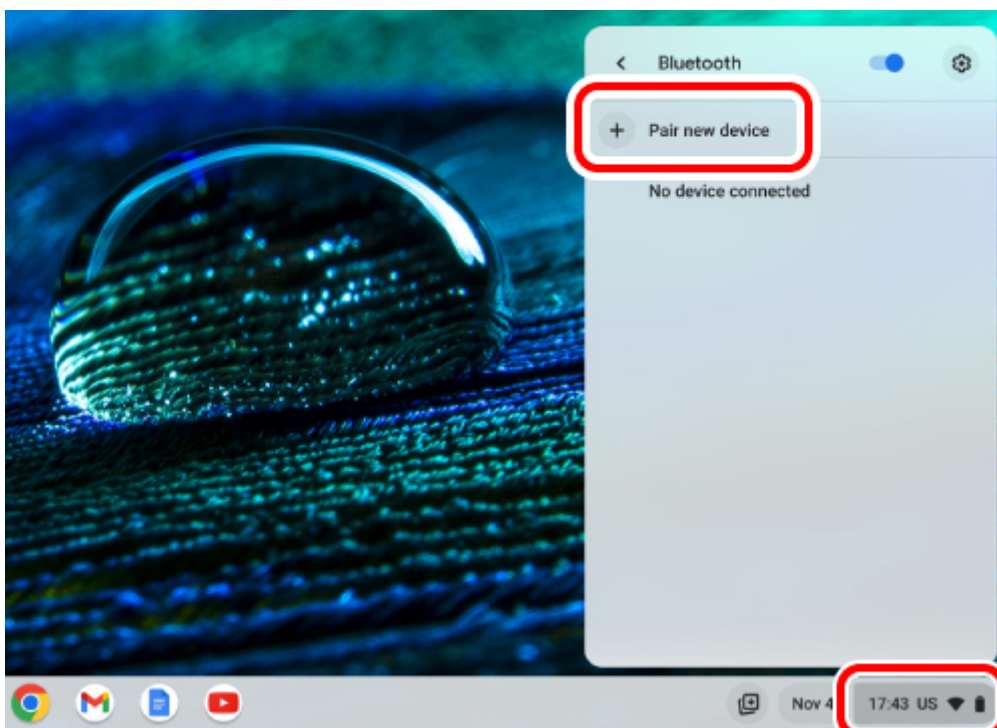
**1) Click on the quick settings panel on the bottom right.**

**2) Click "Bluetooth".**

If "Bluetooth" is off, turn it on.



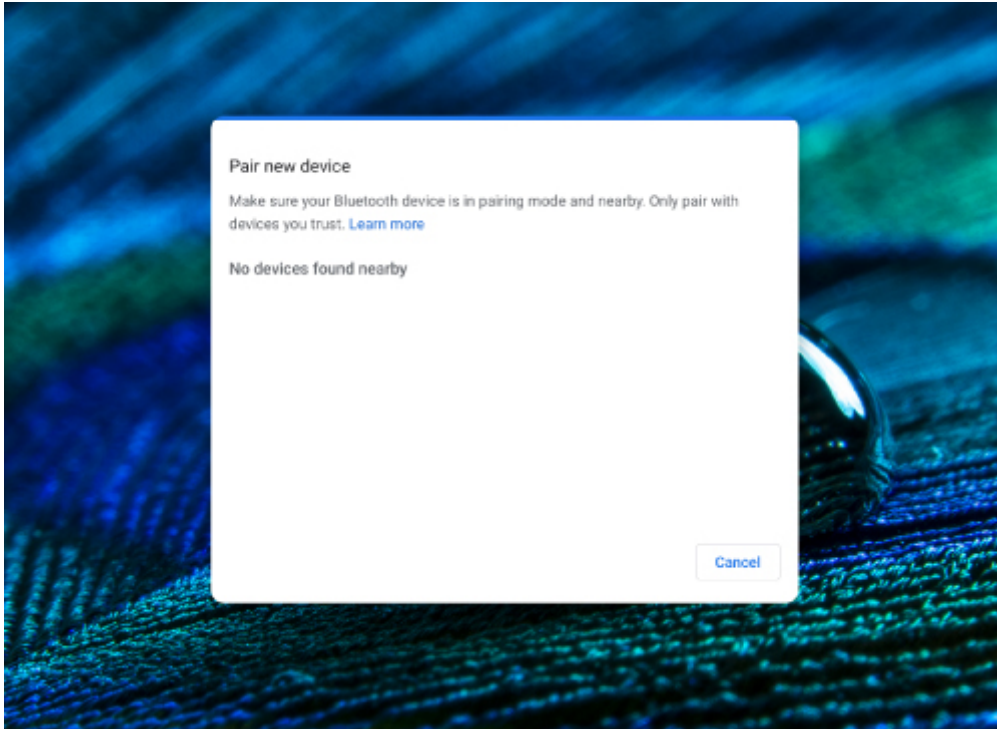
**3) Click on "Pair new device".**



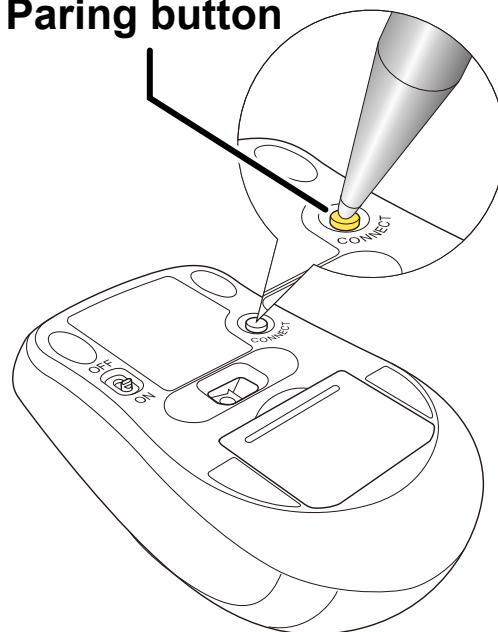
**4) During the device search hold down the pairing button on the underside for 3 seconds**

4) During the device search, hold down the pairing button on the underside for 3 seconds and then release.

Pairing mode will be activated and the LED lamp will blink blue.

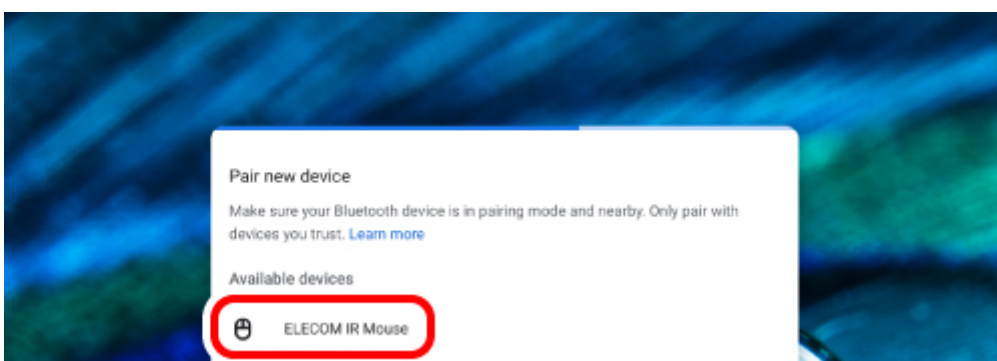


**Pairing button**



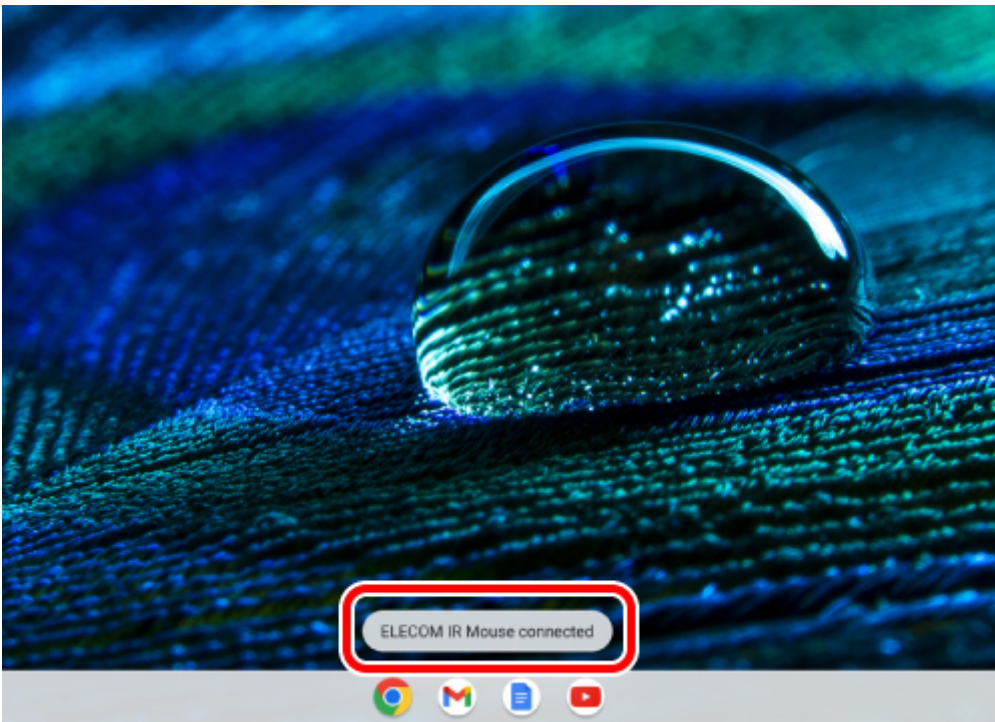
**5) Click on "ELECOM IR Mouse".**

Pairing begins.

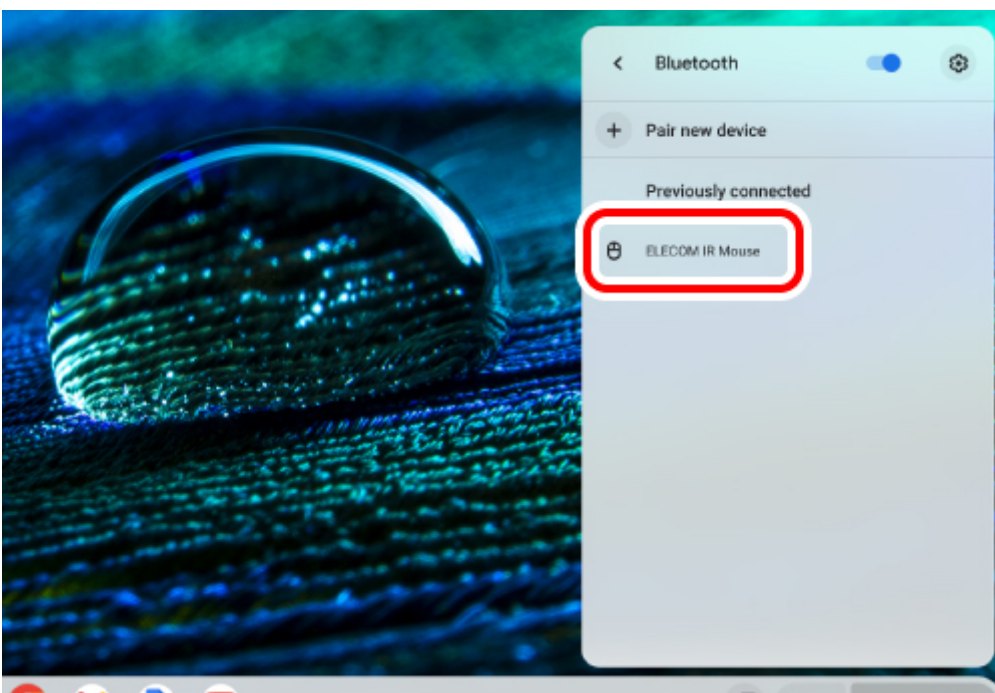




6) "ELECOM IR Mouse connected" will be displayed at the bottom of the screen.



Click "Bluetooth" like in step 2. Pairing is complete when "ELECOM IR Mouse" appears under "Currently connected".





You can now use the mouse.

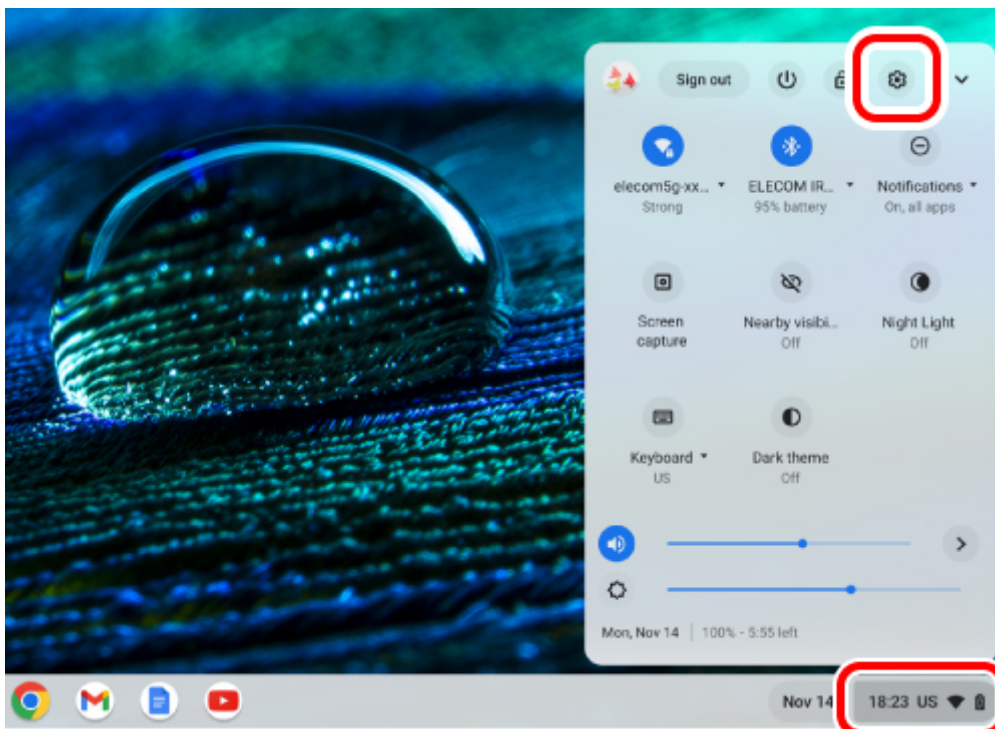
## Change the mouse pointer speed

Adjust the mouse pointer movement speed on your PC if the mouse pointer moves too fast or too slow.

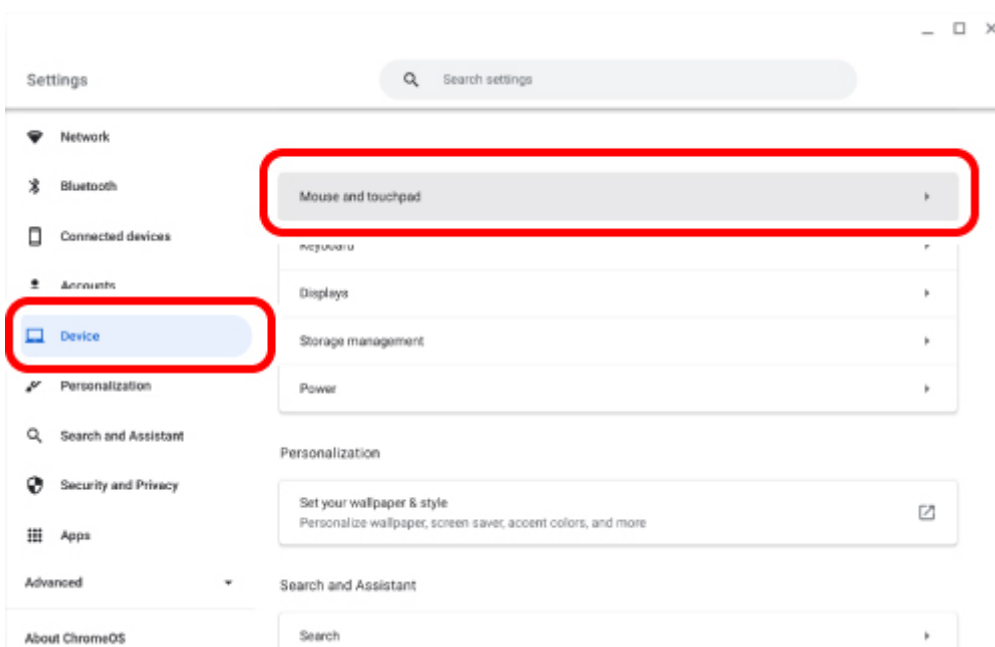
1) Click on the quick settings panel on the bottom right.

2) Click on "Settings".

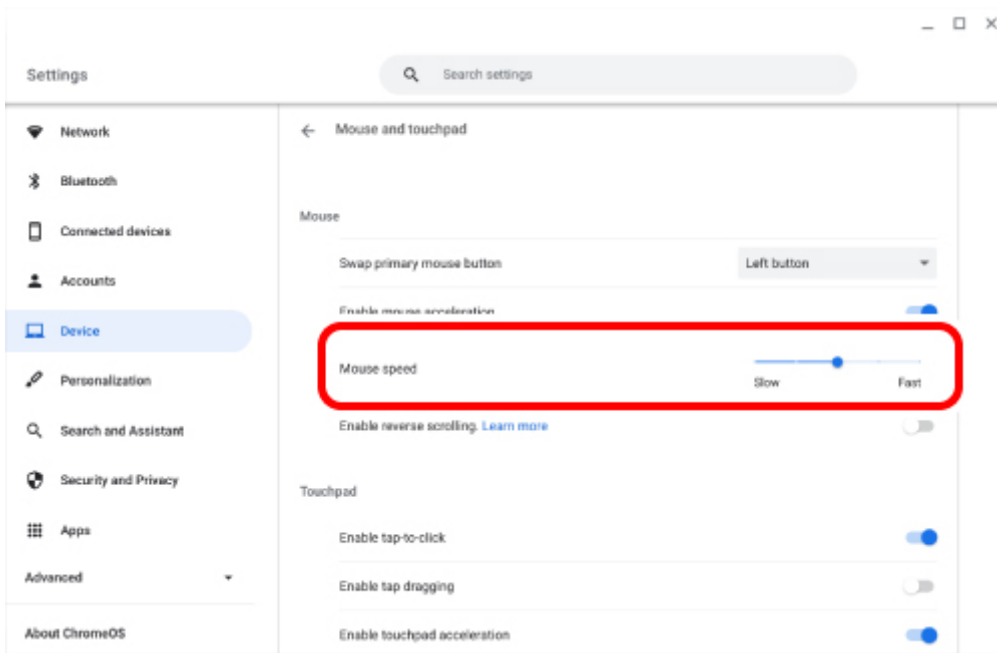
The settings page will appear.



3) Click on "Mouse and touchpad" under "Devices".



4) Adjust the “Mouse speed” slider to adjust the speed of the mouse pointer.

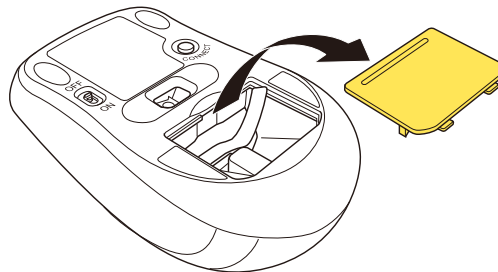


## Windows®

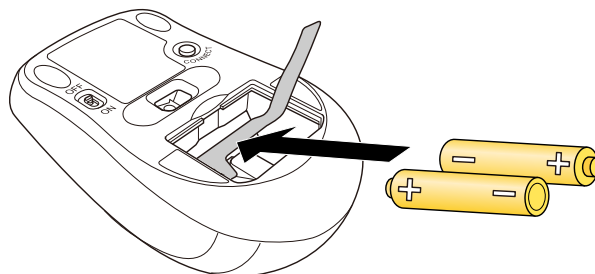


### 1. Insert batteries

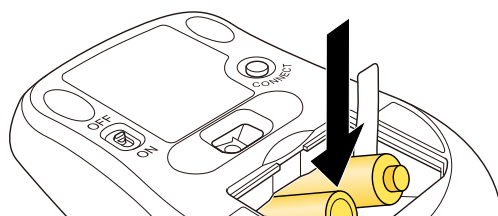
1) Remove the battery cover.

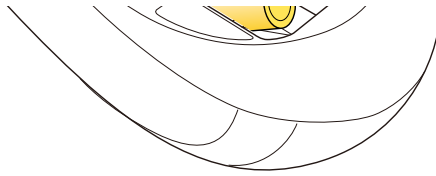


2) Insert the batteries at an angle with the battery removal sheet underneath.



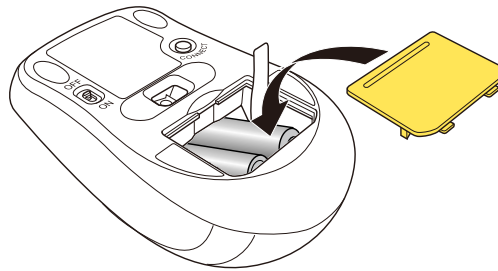
3) Push the other end in.





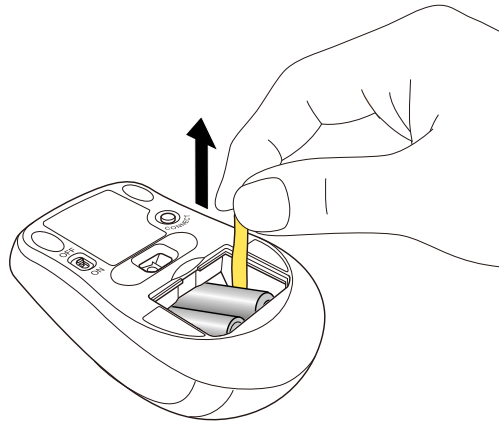
- Ensure that the batteries are inserted with the positive (+) and negative (-) terminals oriented correctly.
- Do not use different types of batteries or use a mixture of old and new batteries. The batteries may leak and cause malfunction.

#### 4) Replace the battery cover.



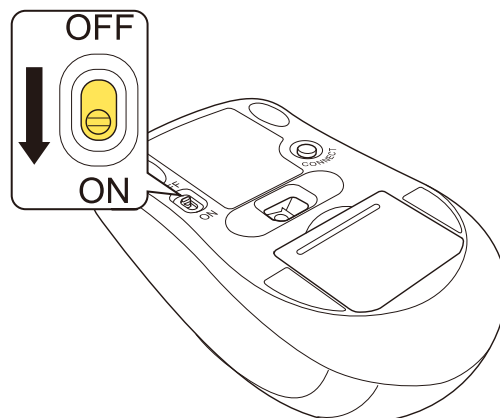
#### Replacing the batteries...

Pull the battery removal sheet to remove the batteries and replace them with new ones.



## 2. Turn the power ON

1) Slide the power switch on the underside of the product to the ON position.



The LED will light up blue for a period of time.

\* When the batteries are running low, the LED will blink blue for a period of time.



### Power-saving mode

When the mouse is left untouched for a fixed period of time while the power is ON, it automatically shifts to power-saving mode.

The mouse returns from power-saving mode when it is moved.

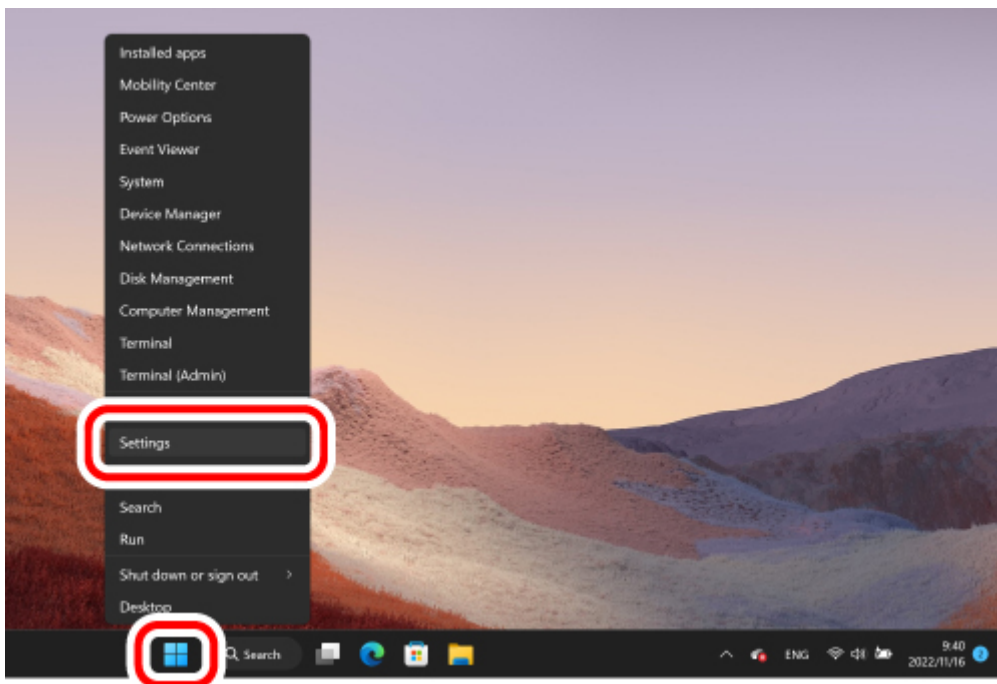
\* Mouse operation may be unstable for 2-3 seconds after returning from power-saving mode.

## 3. Pairing with a PC

- Pairing involves registering Bluetooth devices (in this case, this product and your device) with each other, and authorizing a connection between them.
- This section covers Windows standard Bluetooth functions. Depending on your device or Bluetooth adaptor, unique Bluetooth functions may be used. Please read the respective manuals for each function.
- Please carry out the pairing operation using your current mouse or touchpad on your device.
- The following instructions are for Windows 11 (22H2).

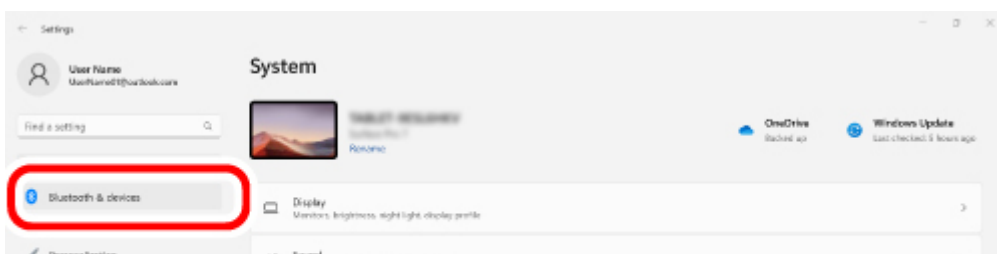
### 1) Click on “Start” on the bottom of the screen and right click on “Settings”.

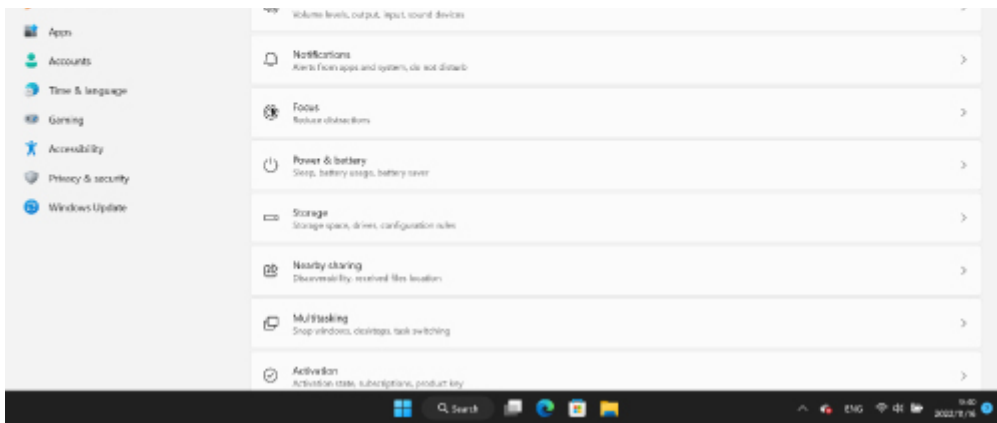
The “Settings” page will appear.



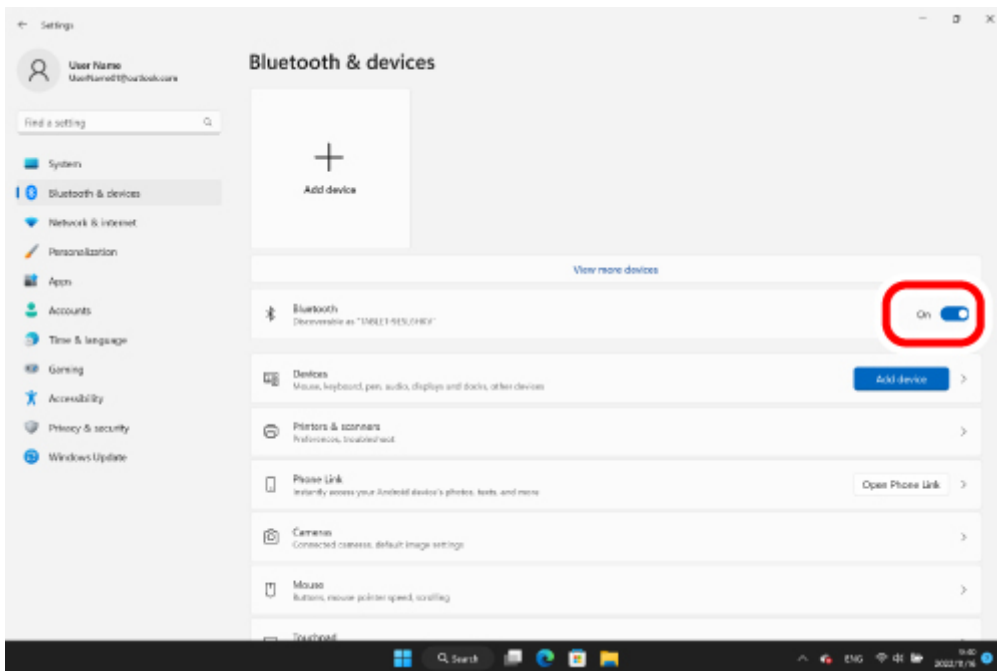
### 2) Click on “Bluetooth & Devices”.

The “Devices” page will appear.

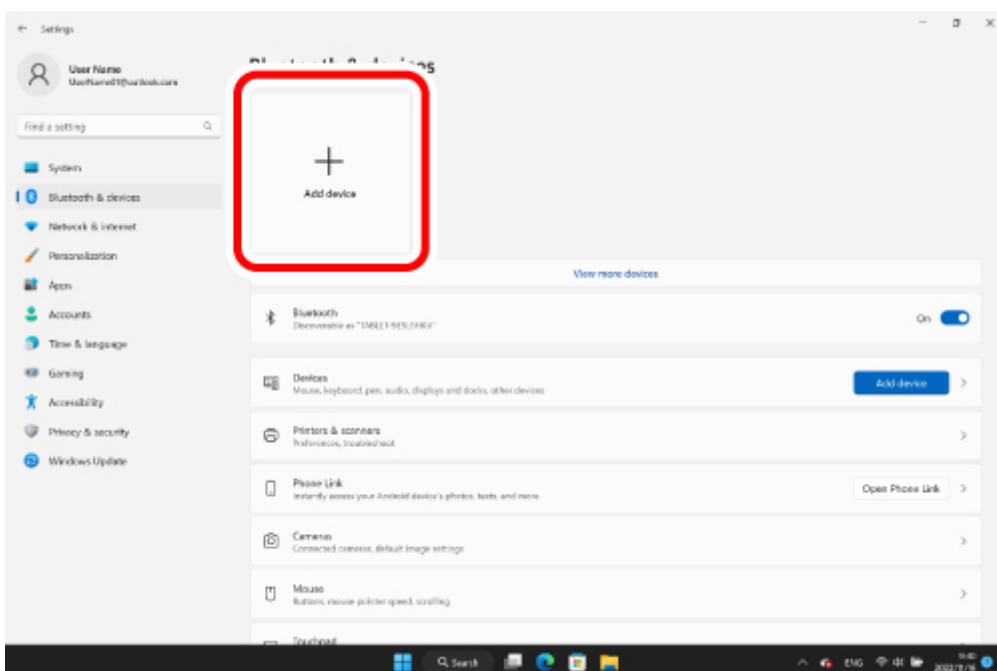




If "Bluetooth" is off, turn it on.

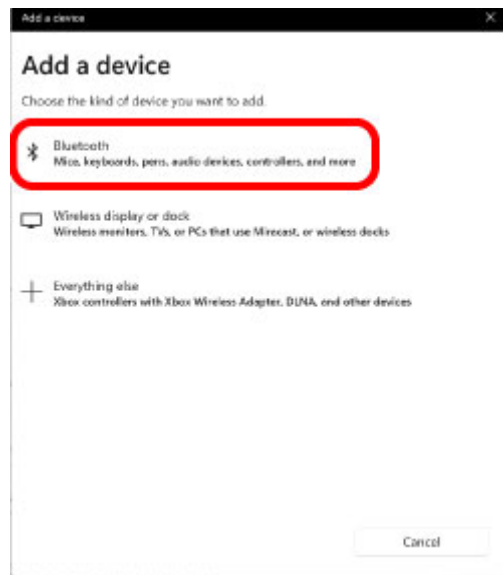


3) Click on "Add Devices".



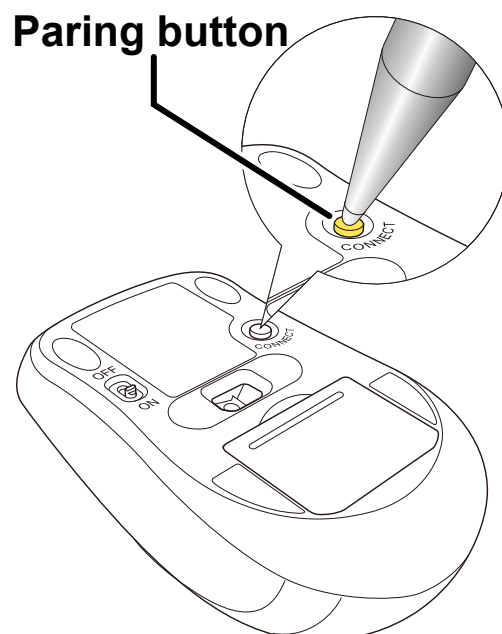
4) Click "Bluetooth".





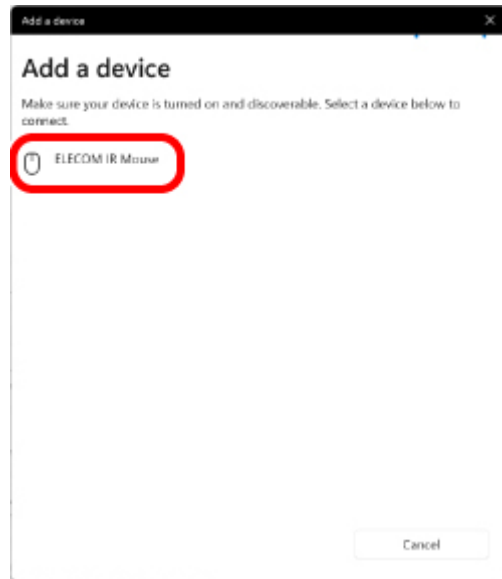
**5) When the add device screen is displayed, hold down the pairing button on the underside for 3 seconds and then release.**

Pairing mode will be activated and the LED lamp will blink blue.

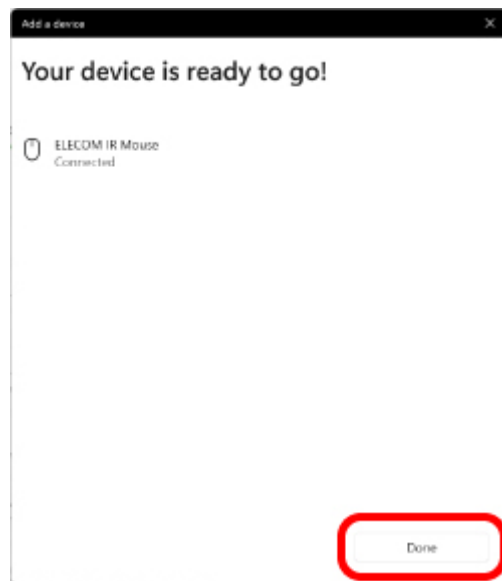


**6) Click on “ELECOM IR Mouse”.**

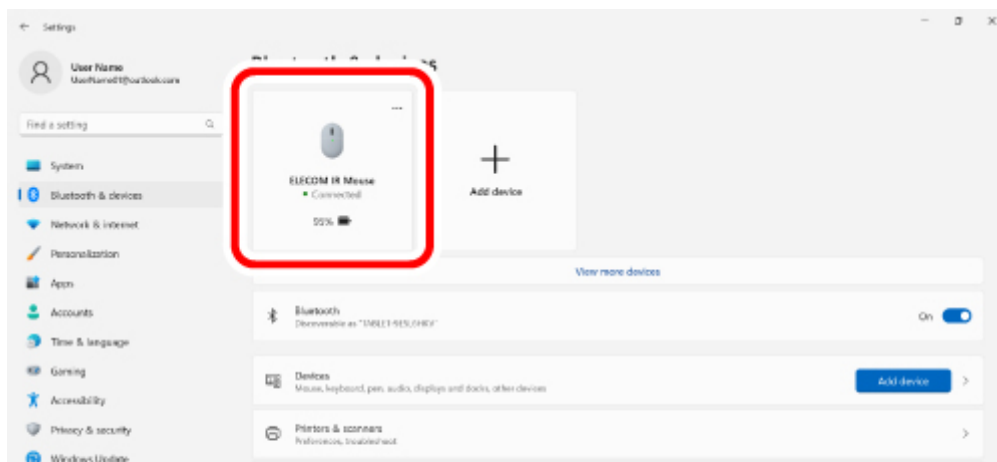
Pairing begins.

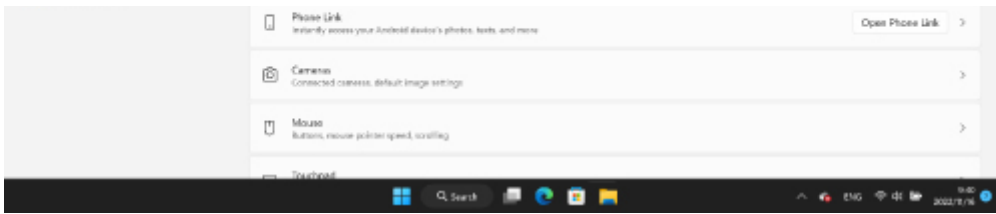


**7) When the message changes to “The device is ready!”, click “Finish”.**



**8) Pairing is complete when this product is added to “Bluetooth and Device” and the status is “Connected”.**





You can now use the mouse.

## Change the mouse pointer speed

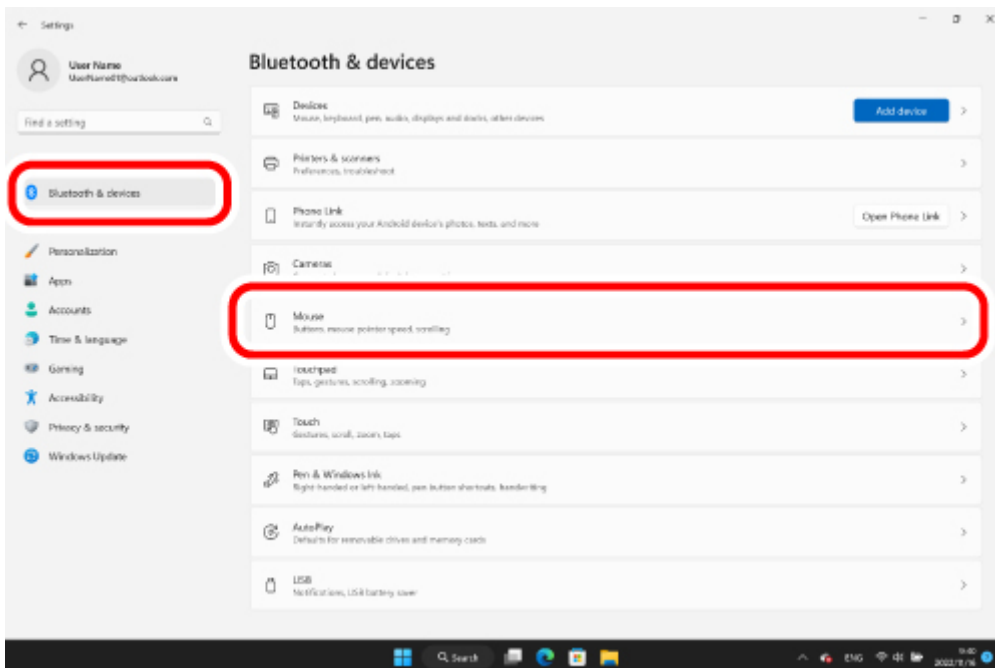
Adjust the mouse pointer movement speed on your PC if the mouse pointer moves too fast or too slow.

### ■ For Windows 11

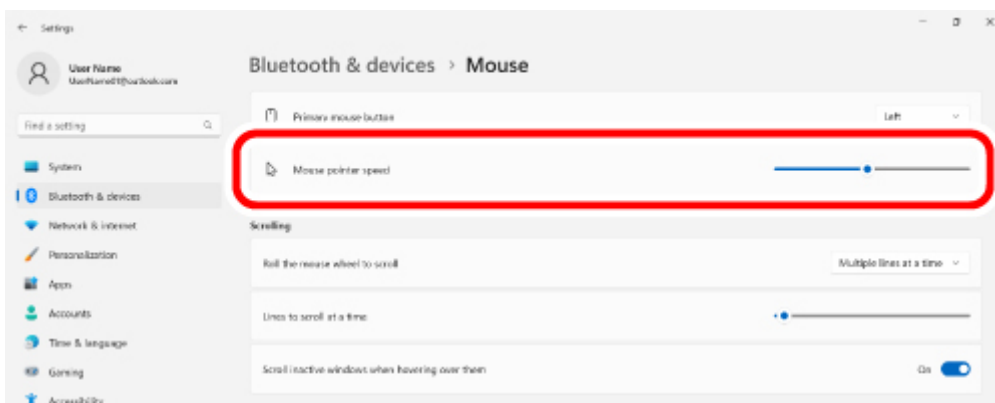
1) Click on “Start” on the bottom of the screen and right click on “Settings”.

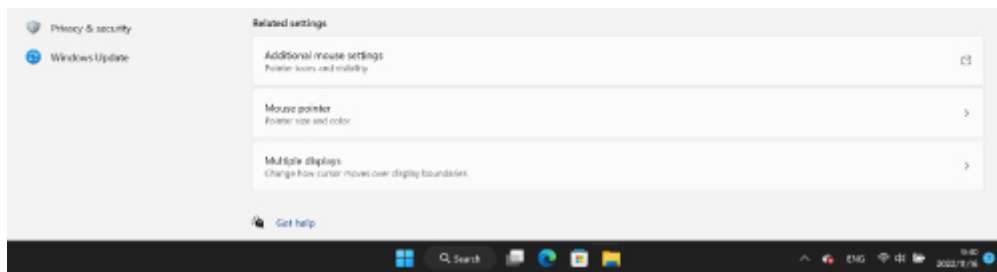
The “Settings” page will appear.

2) Click on “Bluetooth & Devices” and then “Mouse”.



3) Adjust the “Mouse pointer speed” slider bar to adjust the mouse pointer movement speed.





## ■ For Windows 10

### 1) Open "Mouse" properties.

From the start menu, click the Settings icon, select "Devices" → "Mouse", then click "Other mouse options" under "Related settings".

### 2) Select the "Pointer options" tab.

### 3) Adjust the "Select mouse pointer speed" slider bar to adjust the mouse pointer movement speed.

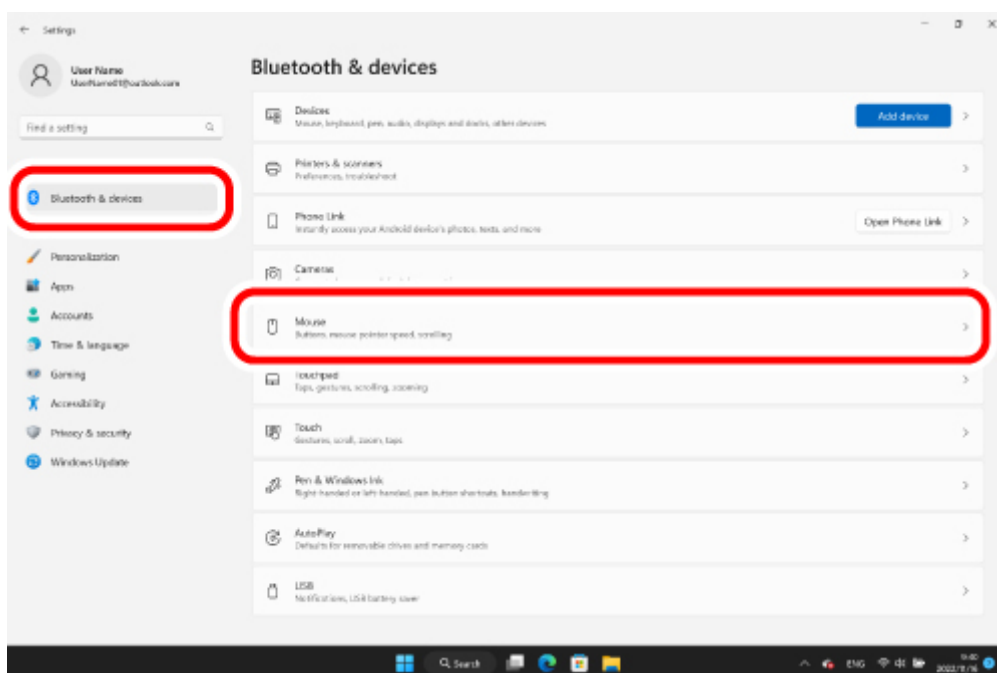
## Change the number of lines scrolled in one wheel turn

### ■ For Windows 11

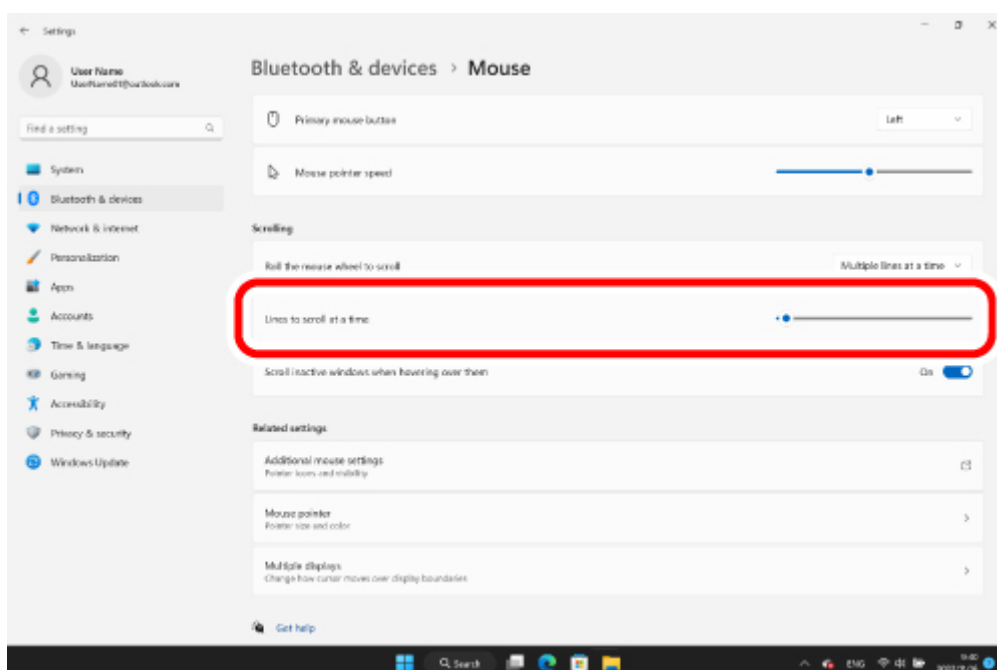
1) Click on “Start” on the bottom of the screen and right click on “Settings”.

The “Settings” page will appear.

2) Click on “Bluetooth & Devices” and then “Mouse”.



3) Adjust the “Lines to scroll at a time” slider bar to adjust the number of lines per scroll.



### ■ For Windows 10

1) Open “Mouse” properties.

From the start menu, click the Settings icon, select “Devices” → “Mouse”, then click “Other mouse

options" under "Related settings".

**2) Select the "Wheel" tab.**

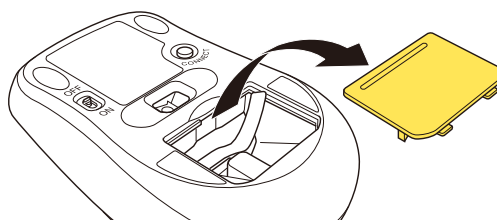
**3) Change the value of "The following number of lines at a time" under "Roll the wheel one notch to scroll"**

## Mac



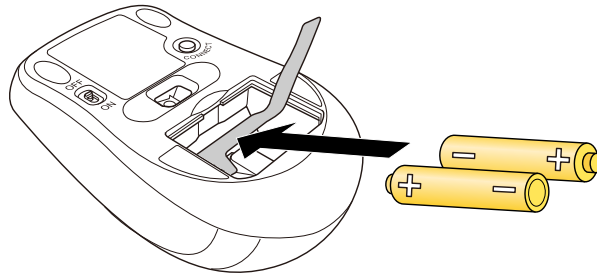
### 1. Insert batteries

**1) Remove the battery cover.**

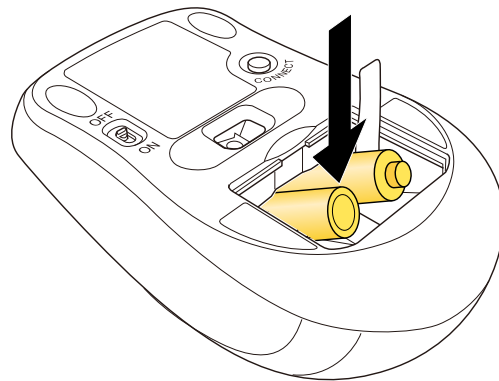




2) Insert the batteries at an angle with the battery removal sheet underneath.

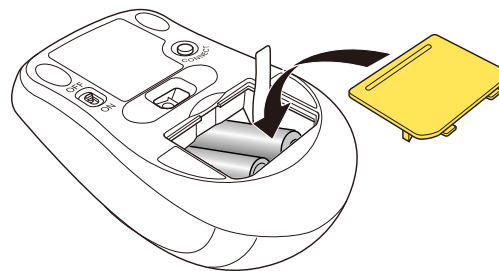


3) Push the other end in.



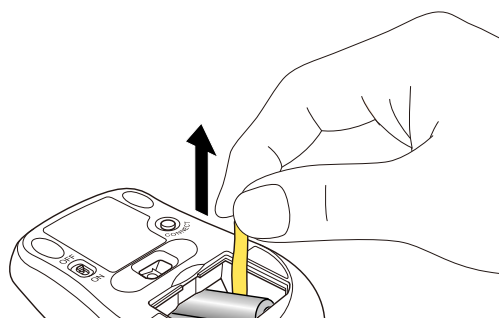
- Ensure that the batteries are inserted with the positive (+) and negative (-) terminals oriented correctly.
- Do not use different types of batteries or use a mixture of old and new batteries. The batteries may leak and cause malfunction.

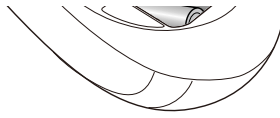
4) Replace the battery cover.



### Replacing the batteries...

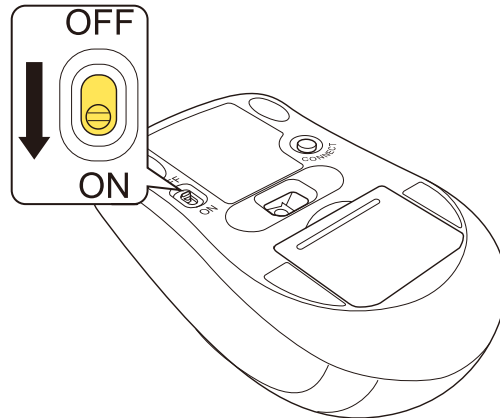
Pull the battery removal sheet to remove the batteries and replace them with new ones.





## 2. Turn the power ON

1) Slide the power switch on the underside of the product to the ON position.



The LED will light up blue for a period of time.

\* When the batteries are running low, the LED will blink blue for a period of time.



### Power-saving mode

When the mouse is left untouched for a fixed period of time while the power is ON, it automatically shifts to power-saving mode.

The mouse returns from power-saving mode when it is moved.

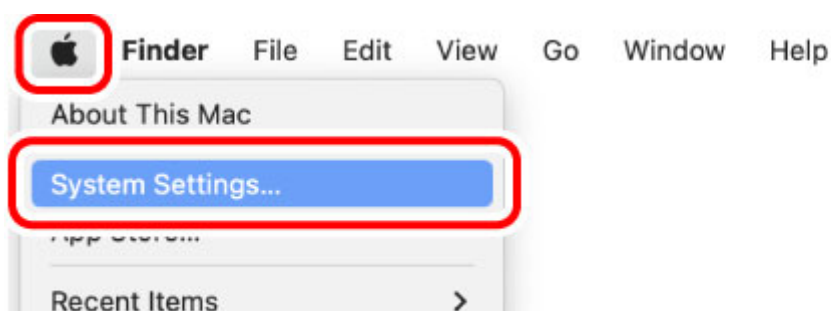
\* Mouse operation may be unstable for 2-3 seconds after returning from power-saving mode.

## 3. Pairing with a PC

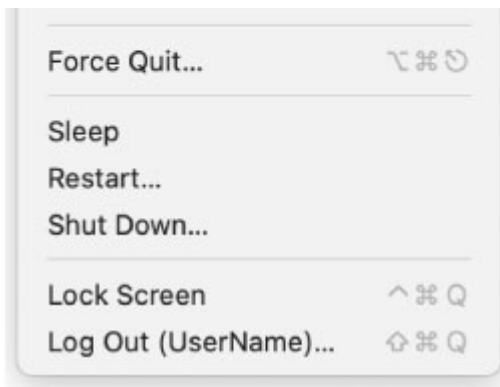
- Pairing involves registering Bluetooth devices (in this case, this product and your device) with each other, and authorizing a connection between them.
- This section covers macOS standard Bluetooth functions. Depending on your device or Bluetooth adaptor, unique Bluetooth functions may be used. Please read the respective manuals for each function.
- Please carry out the pairing operation using your current mouse or touchpad on your device.
- The following instructions are for macOS Ventura (13).

1) From the Apple menu, click on "System Preferences...".

The System Preferences window will appear.

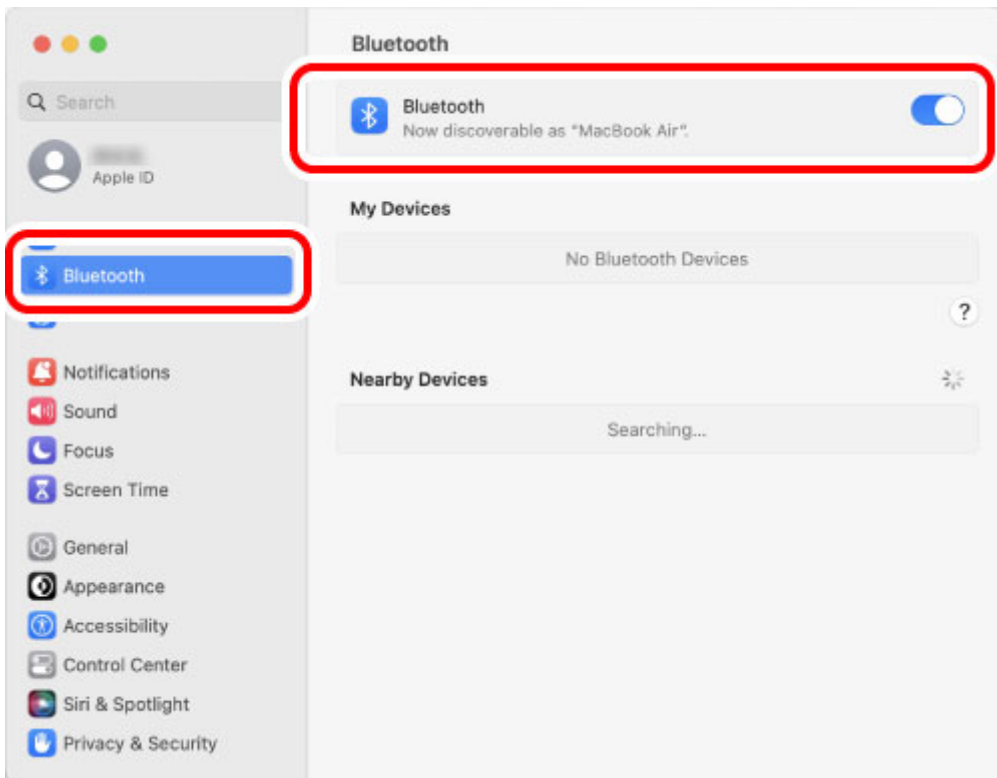






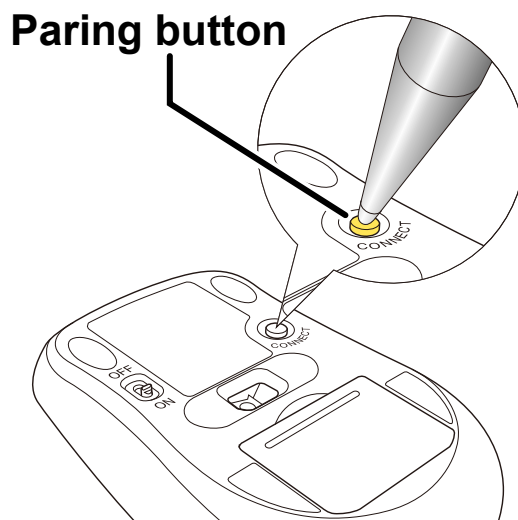
**2) Click on “Bluetooth” to turn on “Bluetooth”.**

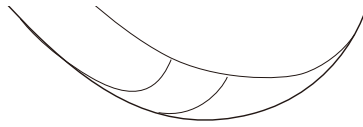
The “Bluetooth” system settings page will appear.



**4) During the device search, hold down the pairing button on the underside for 3 seconds and then release.**

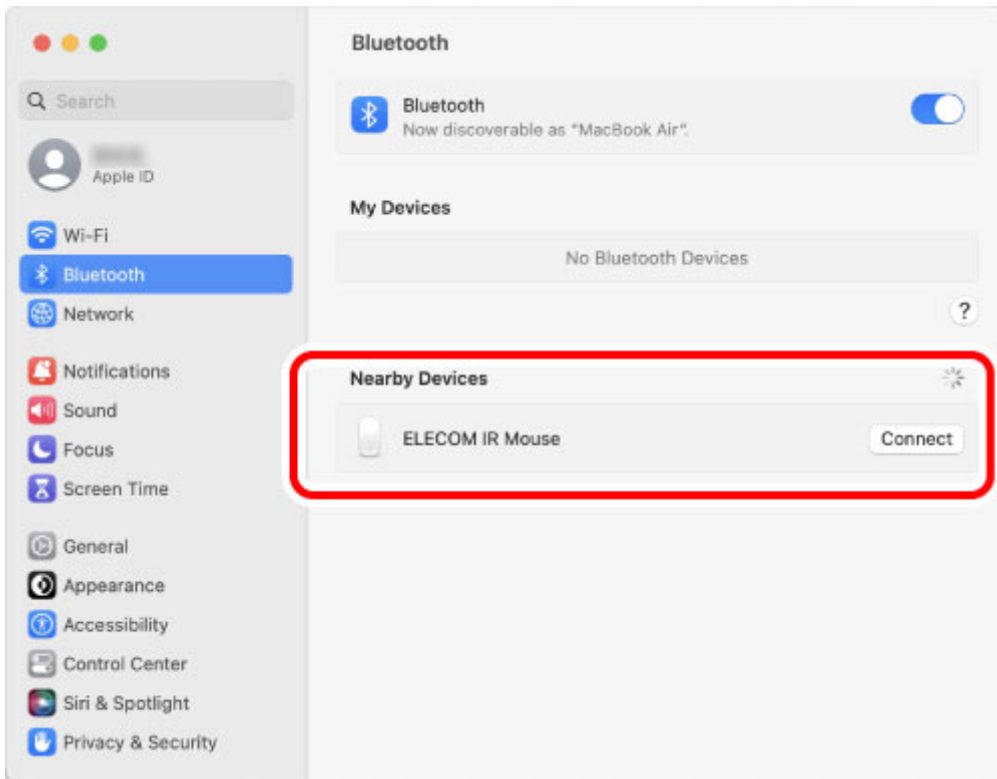
Pairing mode will be activated and the LED lamp will blink blue.



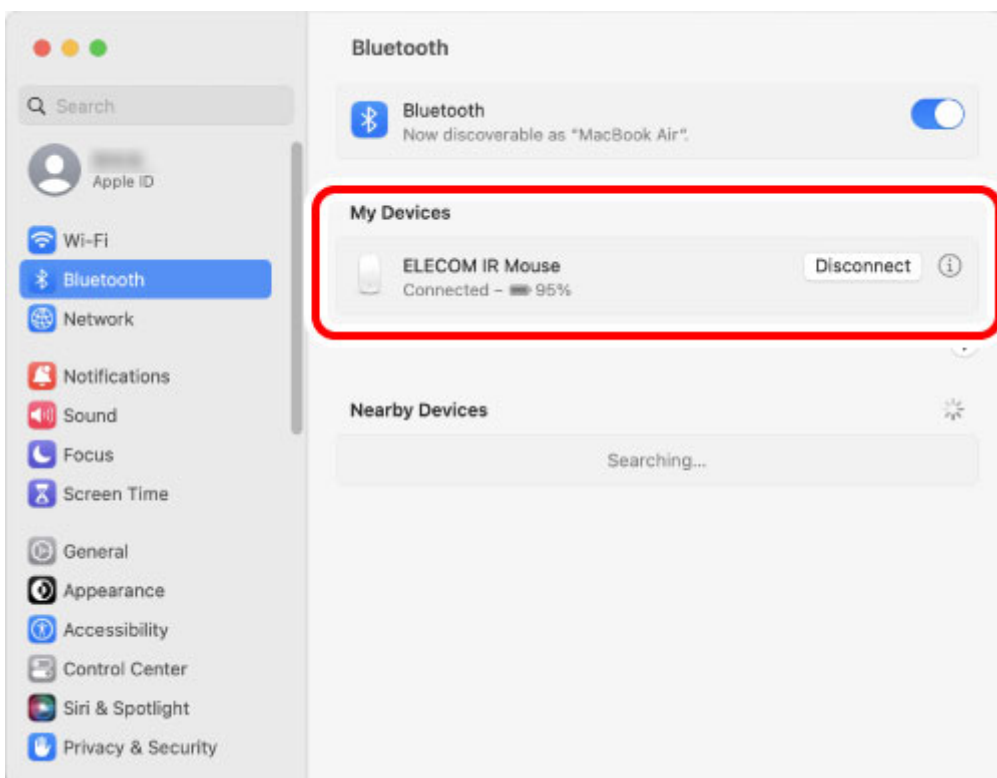


4) When "ELECOM IR Mouse" is detected under "Nearby Devices", click "Connect".

Pairing begins.



6) Pairing is complete when the status of "ELECOM IR Mouse" changes to "Paired".



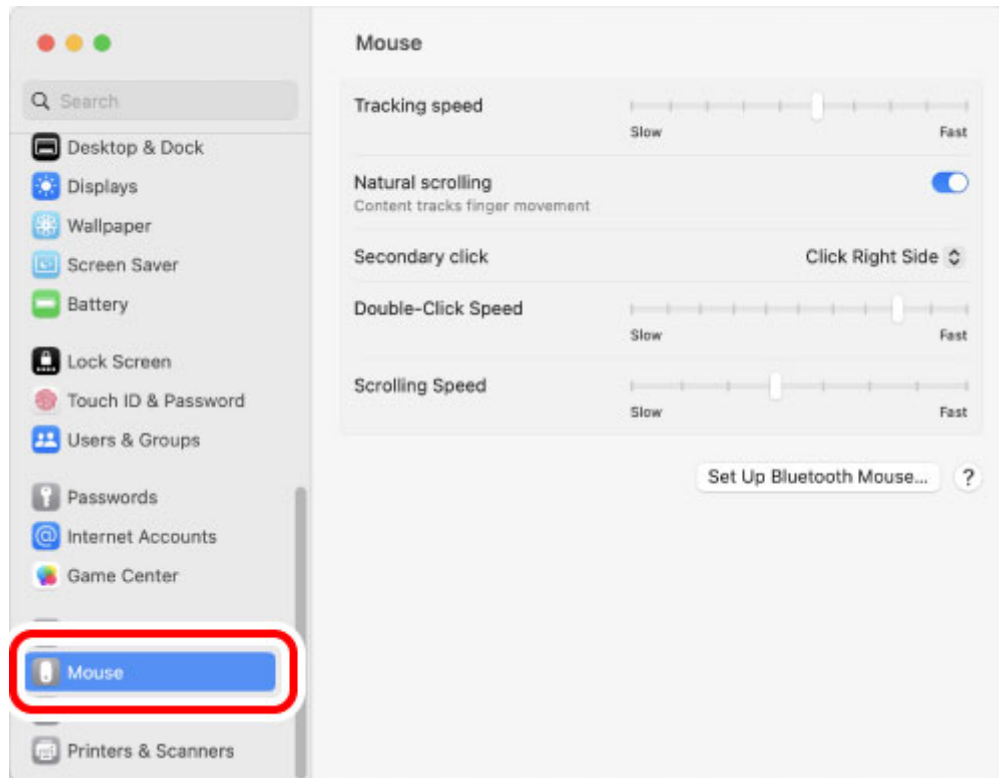
You can now use the mouse.

## Change the mouse pointer speed

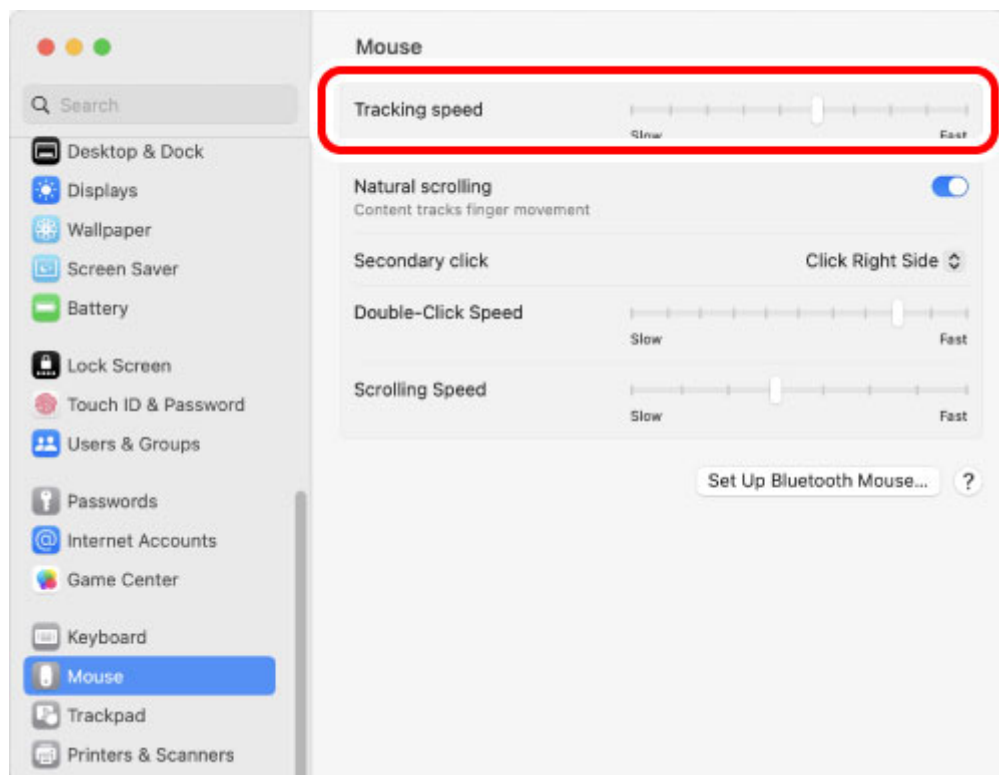
Adjust the mouse pointer movement speed on your PC if the mouse pointer moves too fast or too slow.


### 1) Click "Mouse" under "System Preferences".

The "Mouse" settings page will load up.



### 2) Adjust the "Tracking speed" slider to adjust the speed of the mouse pointer.



 Unchecking "Scroll direction: Natural" will cause the scroll direction to be reversed.

## Specifications



Compatible models	Windows OS, Macintosh OS, and Chrome OS devices that support Bluetooth® HOGP.
Supported OS (Windows)	Windows 11/10
Supported OS (mac)	macOS Ventura13
Conformity standards	Bluetooth 5.0 Class2 / profile: HOGP (HID Over GATT Profile)
Resolution	1000 DPI
Communication method	GFSK
Radio frequency	2.4 GHz band
Radio wave range	When used on magnetic surfaces (such as metal desks): approximately 3 m / 9.8 ft When used on non-magnetic surfaces (such as wooden desks): approximately 10 m / 32.8 ft * These values were obtained in ELECOM's test environment and are not guaranteed.
Sensor Type	IR optical sensor
Light beam type	Invisible wavelength range
Buttons	3 * including wheel button
Number of wheels	1
Continuous operating time	Approximately xxx hours
Continuous standby time	Approximately xxx days
Projected battery lifespan	Approximately xxx days * assuming PC usage of 8 hours per day with 5% attributed to mouse operations

Power supply (mouse)	Any 1 of AAA alkaline dry-cell batteries, AAA manganese dry-cell batteries, or AAA nickel-metal hydride batteries
External dimensions (main unit)	Approximately width 59 mm × length 101 mm × height 40 mm / width 2.3 in. × length 4.0 in. × height 1.6 in.
Size category	M Size
Weight (main unit)	Approximately 90 g / approximately 3.1 oz) * including batteries
Operating environment conditions	Temperature: +5 °C to 40 °C / 41 °F to 104 °F; humidity: up to 90 % RH (without condensation)
Storage environment conditions	Temperature -10 °C to +60 °C / 140 °F to 104 °F; humidity: up to 90 % RH (without condensation)
Accessories	AAA alkaline dry cell batteries for confirming operability x 2

## Troubleshooting



### When disinfecting the mouse



### Important

**Do not spray any liquid directly onto the product.**

Doing so can cause electric malfunction.

**Never apply hot water.**

Doing so can cause electric malfunction.


**Do not use organic solvents or ultraviolet light.**

Usage can result in deterioration of the housing components or paint, which can cause damage to the exterior.

**We recommend using disposable gloves.**

**When using any alcohol based products, please check that it is appropriate for the specific purpose and that it is used properly.**

**Please note that in the event that damage or abnormal operation to the product is caused by the cleaning process, the customer will be fully responsible for the cost of repair.**

 **We recommend disinfecting your hands before and after using PCs and peripheral devices that are used by multiple people in order to prevent the spread of infection through the equipment.**



Gently soak a cleaning cloth, such as a microfiber cloth, in the disinfectant solution. Make sure there are no loose droplets and gently wipe the product using the cloth.

After wiping, dry thoroughly and wipe off any residual liquid.

\* Do not spray any liquid onto the product directly. Doing so can cause electric malfunction.

## When the mouse is not working properly



Try the following if the mouse operates abnormally or the connection is unstable.

### ① Check that the mouse is turned ON.

### ② Check that the batteries are inserted correctly and that the batteries are not depleted.

\* Ensure that the batteries are inserted with the terminals in the right orientation.

\* The mouse operation will become unstable when the batteries are low. Refer to "1. Insert batteries" and replace with new batteries as soon as possible.

The batteries included with this product is only for confirming operability. The batteries will discharge energy naturally during the distribution process of the product.

\* Turning off the power when the mouse is not used for a long period of time can extend the battery life.

### ③ Check the Bluetooth connection.

\* Check that the Bluetooth function or the Bluetooth adapter on your PC is turned on.

\* Check pairing status to ensure that this product is paired correctly with your PC and that pairing has not been cancelled.

### ④ Change the usage distance between your PC and the mouse.

This wireless device uses the 2.4 GHz band. Please use the mouse within range of the PC.



#### Average radio wave range

Non-magnetic surface (such as wooden desks): approximately 10 m

Magnetic surface (such as steel desks): approximately 3 m

\* These values were obtained in ELECOM's test environment and are not guaranteed. The 2.4 GHz band signal may be shorter depending on the environment you use it in.

### ⑤ Reboot the PC.

\* The mouse may become unstable depending on the PC. Please restart the PC.

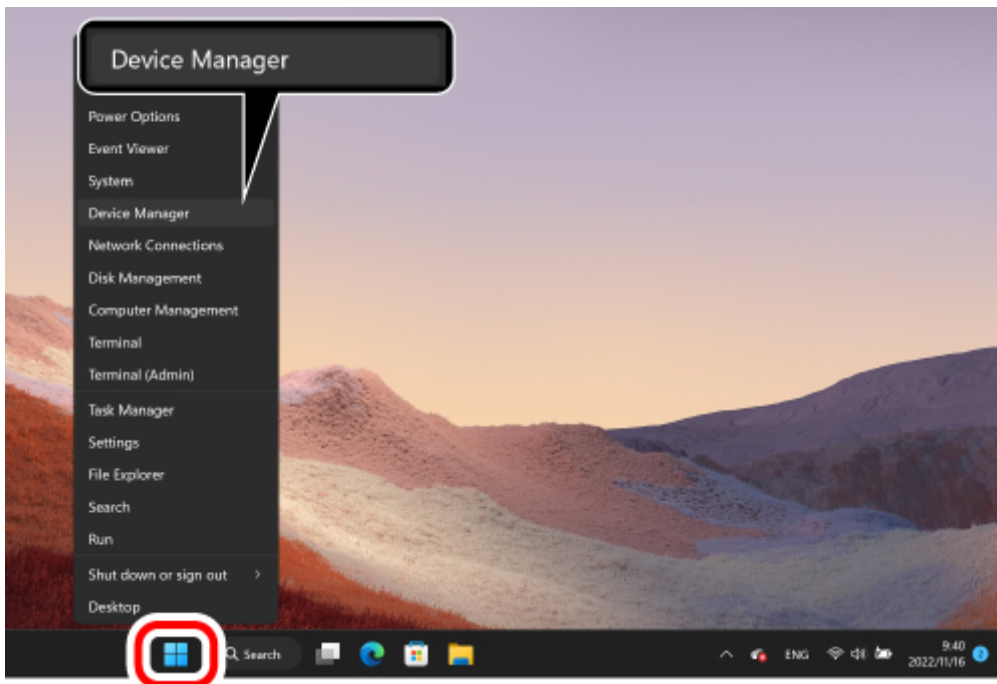
⑥ **Please update your PC's OS to the latest version.**

\* The mouse may become unstable when the PC version is old. Please update your PC's OS to the latest version.

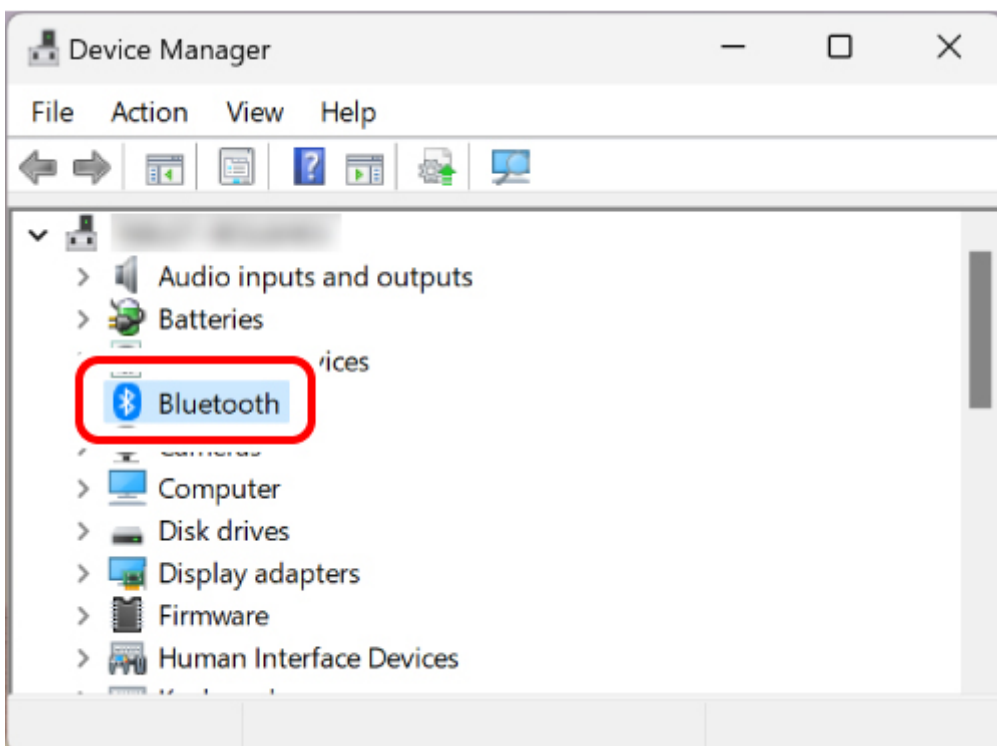
⑦ **Update the Bluetooth driver. (When using Windows® PC)**

\* The mouse may not work normally when the PC's Bluetooth driver is not the latest version. Check the manufacturer of the Bluetooth function installed on your PC and update the driver.

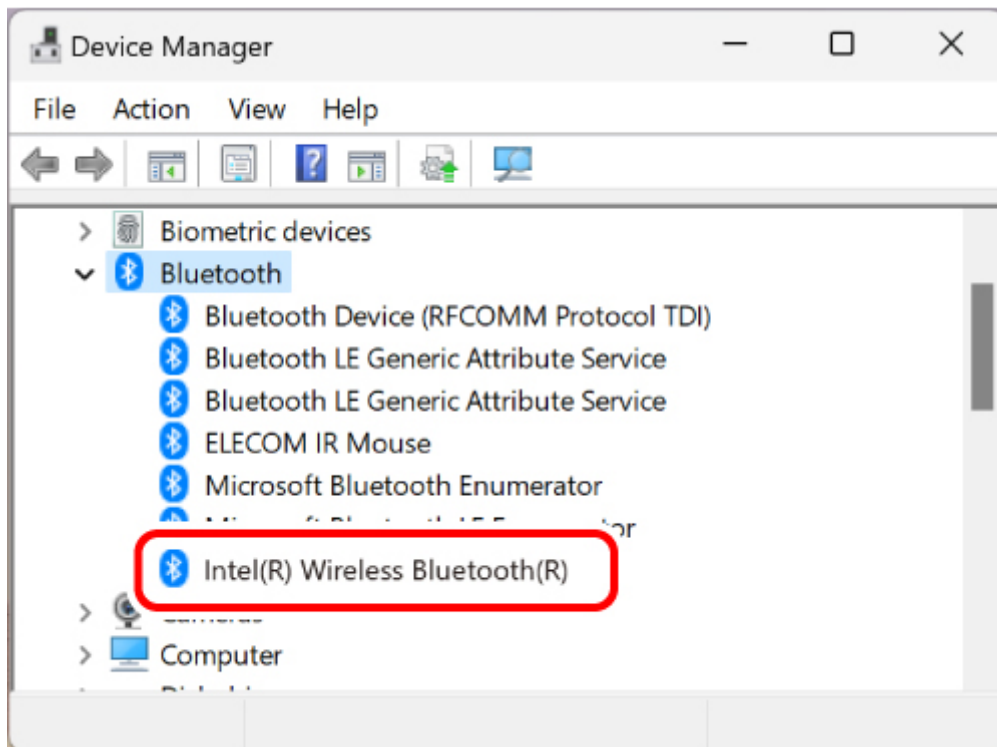
**1) Right click "Start" and open "Device Manager".**



**2) Click "Bluetooth".**



**3) Check the manufacturer of the Bluetooth function installed on your PC.**



The following steps illustrate the procedure when the Bluetooth function is manufactured by Intel® Corporation.

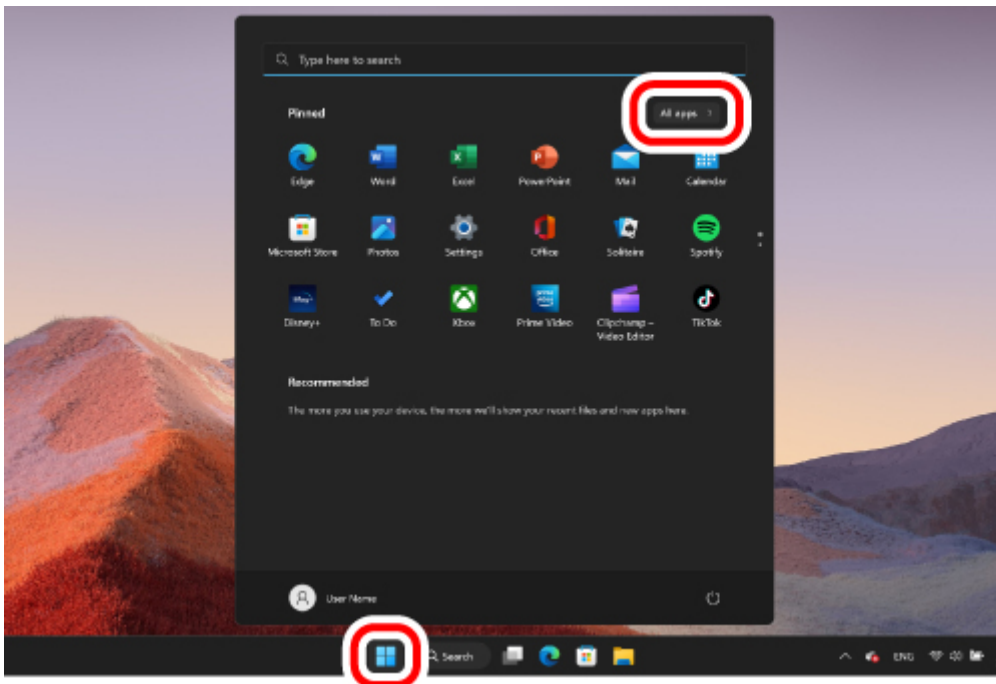
For other manufacturers or if you do not know the manufacturer, check the user manual of your PC or contact the manufacturer of your PC for instructions on how to update the Bluetooth driver.

**4) Search for “Intel® Driver & Support Assistant” on your browser and download the installer from Intel’s website.**

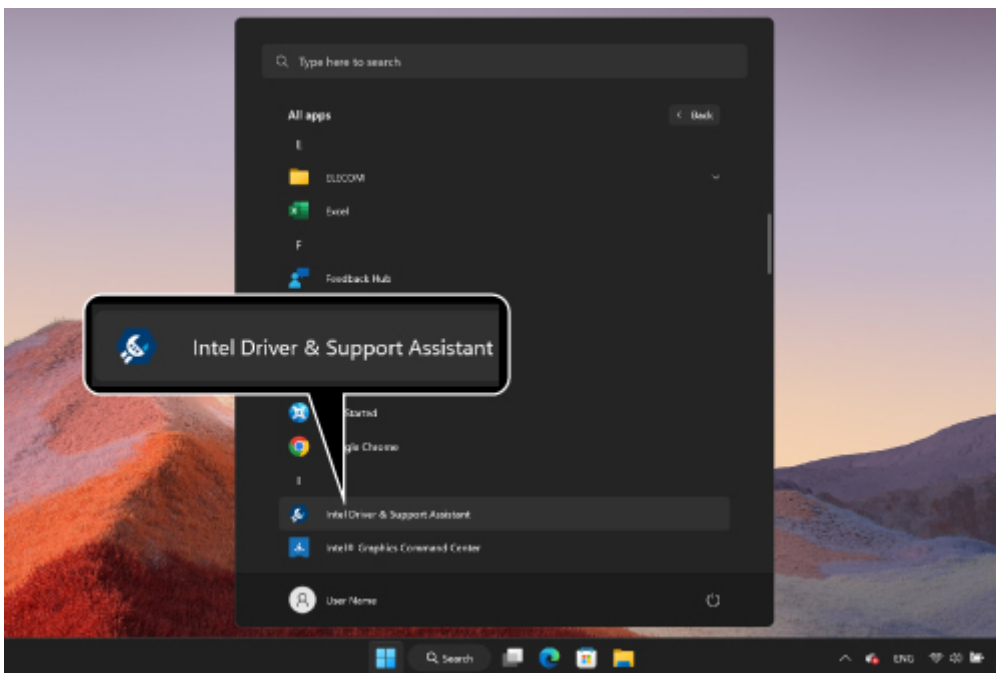
**5) Follow the instructions of the downloaded installer to install “Intel® Driver & Support Assistant”.**

**6) Click “Start” and then “All apps”.**



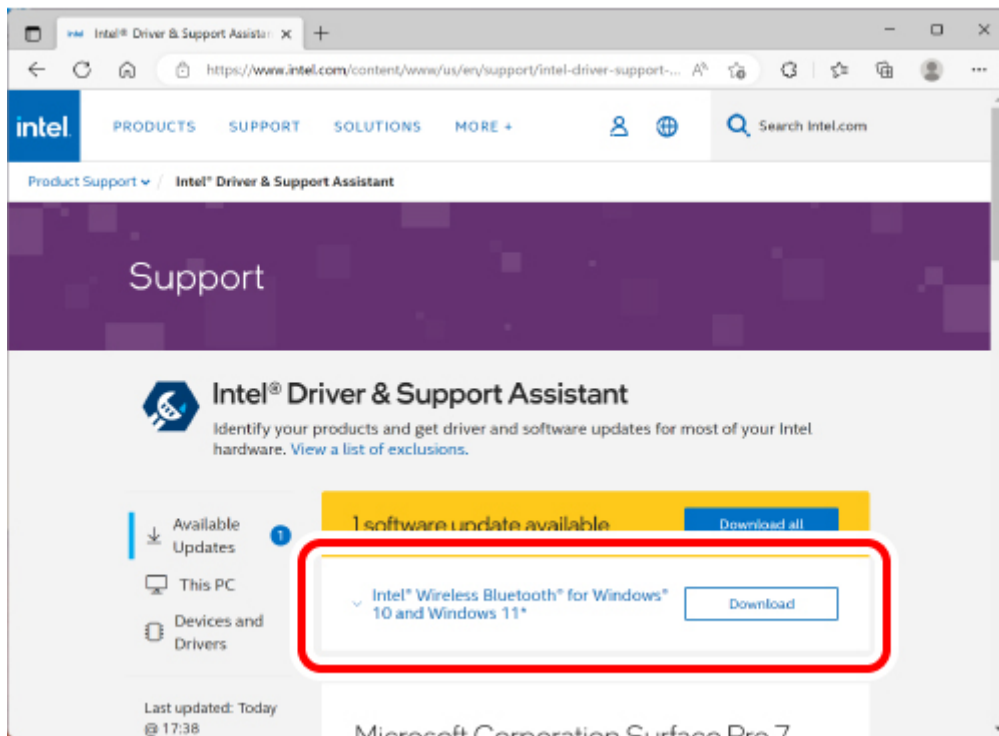


7) Open "Intel Driver & Support Assistant".



8) The Intel support page will automatically open on your browser and a list of drivers and software updates that can be used on your PC will be displayed.

9) Download "Intel® Wireless Bluetooth" from the list if available.



\* The display on your browser may change depending on your PC environment and support page updates.

**10) Follow the instructions of the downloaded installer to install the Bluetooth driver.**

**With this, the Bluetooth driver is updated.**

**⑧ When using the USB Bluetooth receiver, change the receiver connection.**

Depending on the specifications of the PC's USB port or USB hub, other USB 3.0 devices used simultaneously with the mouse may generate noise that can worsen the 2.4 GHz signal in the vicinity.



**Examples of USB devices that may degrade the 2.4 GHz band signal**

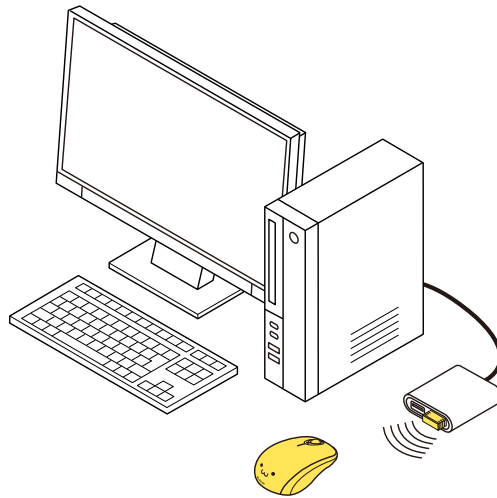
- USB memory
- Hard disk or SSD
- Optical disk drive
- Card reader / writer
- LAN adapter
- Others, all devices communicating data with a PC via USB 3.0.

You may be able to improve the situation with the following method.

- **Connect the Bluetooth receiver to another USB port away from other USB3.0 devices that are in use simultaneously.**



- Connect the Bluetooth receiver to a USB2.0 hub or to an extension cable.



## Compliance status



Model/모델명/设备型号/型号: M-CB01BR

### ▼ China / 中国

CMIIT ID: XXXXXXXXXXXX

RoHS Compliance (产品中有毒有害物质或元素的名称及含量)

### ▼ EU



CE Declaration of Conformity

RoHS Compliance

**Importer EU Contact** (For CE matters only)

Around the World Trading, Ltd.

5th floor, Koenigsallee 2b, Dusseldorf, Nordrhein-Westfalen, 40212, Germany



### **WEEE Disposal and Recycling Information**

This symbol means that waste of electrical and electronic equipment (WEEE) should not be disposed as general household waste. WEEE should be treated separately to prevent possible harm to the environment or human health. Consult your retailer or local municipal office for collection, return, recycle or reuse of WEEE.

### ▼ **Korea / 대한민국**



**인증번호:** R-R-ELJ-M-CB01BR

제작자 및 설치자는 해당 무선설비가 전파혼신 가능성이 있으므로 인명안전과 관련된 서비스는 할 수 없습니다.

**건전지:** BXXXXXXXX-XXXXX

### ▼ **Singapore**

Complies with  
IMDA standards  
DA106058.

**Operating Frequencies:** XXXX-XXXXMHz

**Maximum field intensity / RF Output power :** X.XX dBm / X.XX mW

### ▼ **Taiwan / 台灣**

BSMI RoHS statement (限用物質含有情況標示聲明書)



型號: XXXXXXXXXXXXXXXX

取得審驗證明之低功率射頻器材，非經核准，公司、商號或使用者均不得擅自變更頻率、加大功率或變更原設計之特性及功能。低功率射頻器材之使用不得影響飛航安全及干擾合法通信；經發現有干擾現象時，應立即停用，並改善至無干擾時方得繼續使用。前述合法通信，指依電信管理法規定作業之無線電通信。低功率射頻器材須忍受合法通信或工業、科學及醫療用電波輻射性電機設備之干擾。

▼ UK



UK Declaration of Conformity

RoHS Compliance

**Importer UK Contact** (For UKCA matters only)

Around the World Trading, Ltd.

25 Clarendon Road Redhill, Surrey RH1 1QZ, United Kingdom

▼ US



**FCC ID:** YWO-M-CB01BR

This device complies with Part 15 of the FCC Rules. Operation is subject to the following two conditions: (1) this device may not cause harmful interference, and (2) this device must accept any interference received, including interference that may cause undesired operation.

NOTE; This equipment has been tested and found to comply with the limits for a Class B Digital Device, pursuant to part 15 of the FCC Rules. These limits are designed to provide reasonable protection against harmful interference in a residential installation. This equipment generates, uses and can radiated radio frequency energy and, if not installed and used in accordance with the instruction, may cause harmful interference to radio communication. However, there is no grantee that interference will not occur in a particular installation. If this equipment does cause harmful interference to radio or television reception, which can be determined by tuning the equipment off and on, the user is encouraged to try to correct the

interference by one or more of the following measures:

- Reorient or relocate the receiving antenna - Increase the separation between the equipment and receiver -
- Connect the equipment into an outlet on a circuit different from that to which the receiver is connected -
- Consult the dealer or an experienced radio/TV technician for help

NOTICE: The manufacture is not responsible for any radio or TV interference caused by unauthorized modification to this equipment. Such modifications could void the user's authority to operate the equipment. In order to make improvements to this product, the design and specifications are subject to change without prior notice.

**FCC Caution:** To assure continued compliance, any changes or modifications not expressly approved by the party responsible for compliance could void the user's authority to operate this equipment. (Example - use only shielded interface cables when connecting to computer or peripheral devices).

### **FCC Radiation Exposure Statement**

This equipment complies with FCC RF radiation exposure limits set forth for an uncontrolled environment. This equipment should be installed and operated with a minimum distance of 0.5 cm between the radiator and your body.

This transmitter must not be co-located or operating in conjunction with any other antenna or transmitter.

The antennas used for this transmitter must be installed to provide a separation distance of at least 0.5 cm from all persons and must not be co-located or operating in conjunction with any other antenna or transmitter.

### **Responsible party**

ELECOM USA, Inc.

18575 Jamboree Road Suite 600, Irvine CA 92612 USA

[elecomus.com](http://elecomus.com)

**Intellectual property rights**



- ELECOM CO., LTD. owns the copyright to this manual.
- All products and company names on this product and the package are trademarks or registered trademarks of their respective owners.
- Duplicating and transferring this document in part or whole is prohibited.
- Windows is a registered trademark or trademark of Microsoft Corporation in the United States and/or other countries.
- macOS is a trademark of Apple Inc., registered in the U.S. and other countries and regions.
- Chrome OS and Chromebook are trademarks of Google LLC.
- The Bluetooth® wordmark and logos are registered trademarks owned by Bluetooth SIG, Inc. and any use of such marks by ELECOM CO., LTD. is under licence.

## Support information



### **ELECOM CO., LTD.**

[www.elecom.co.jp/global/](http://www.elecom.co.jp/global/)

Please contact the shop where you purchased this product if you have any feedback or questions about the contents of this manual.

Specifications and external appearance of this product may be changed without prior notice for the purpose of product improvement.

ELECOM is not responsible for any damages to, or failure of other devices caused by using this product.

The images are for illustration purposes only and may differ from your actual product.

When exporting this product, check the export regulations for the country of origin.

A customer who purchases outside Japan should contact the local retailer in the country of purchase for enquiries. In "ELECOM CO., LTD. (Japan)", no customer support is available for enquiries about purchases or usage in/from any countries other than Japan. Also, no foreign language other than Japanese is available. Replacements will be made under stipulation of the ELECOM warranty, but are not available from outside of Japan.

### ▼ **ELECOM USA, Inc.**

18575 Jamboree Road Suite 600, Irvine CA 92612 USA

▼ **ELECOM Korea Co., Ltd.**

Dome-Bldg 5F, 60, Nambusunhwan-ro 347-gil, Seocho-gu, Seoul, 06730, South Korea

TEL : +82 (0) 2 - 1588 - 9514

FAX : +82 (0) 2 - 3472 - 5533

[www.elecom.co.kr](http://www.elecom.co.kr)

▼ **ELECOM (SHANGHAI) TRADING Co.,Ltd.**

Room 208-A21, 2nd floor, 1602 Zhongshanxi Road, Xuhui District, Shanghai, China, 200235

TEL : +86 021-33680011

FAX : +86 755 83698064

▼ **ELECOM SALES Hong Kong LTD.**

2/F, Block A, Sea View Estate 2-8 Watson Road, Causeway Bay, Hong Kong

TEL : +852 2806 - 3600

FAX : +852 2806 - 3300

▼ **ELECOM Singapore Pte. Ltd.**

Blk 10, Kaki Bukit Avenue 1, #02-04 Kaki Bukit Industrial Estate, Singapore 417942

TEL : +65 6347 - 7747

FAX : +65 6753 - 1791