

Product number: M-DPT1MR

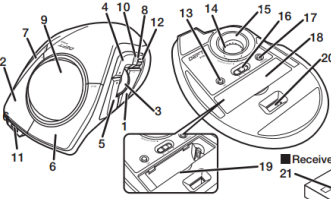
ENGLISH

Manual

Trackball Mouse

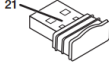
Names of Parts

Trackball main unit



- 1 Left button
- 2 Right button
- 3 Tilt wheel
- 4 "Back" button
Operates the "Back" button on the Web browser.
- 5 "Forward" button
Operates the "Forward" button on the Web browser.
- 6, Function buttons 1 to 3
7, Functions can be assigned to this button. At the time of purchase, no functions have been assigned. In order to assign functions, acquire and install the Elecom Mouse Assistant.
- 9 Trackball

Receiver unit

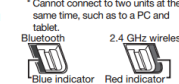


10 LED lamp

- During pairing standby state, the LED blinks red.
- When power is ON, the LED is lit red for a fixed time.
- When remaining battery becomes low during use, the LED blinks red.

11 USB [A] connector

- 12 Connection mode selection switch
Switches between 2.4 GHz wireless connection and Bluetooth connection.

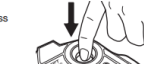


13 Pointer speed change switch

- Each time the button is pressed, the count number (movement speed of the pointer) switches between three stages of 500/1000/1500.
- When the count number is changed, the current count number is shown by the number of times the LED lamp blinks.
- one blink 500 counts
- two blinks 1000 counts
- three blinks 1500 counts

14 Optical sensor (reverse side of ball)

- Remove ball during maintenance



16 Power mode selection switch

- switch
- ⏻ (Power OFF)
- L (Low energy mode)
- H (High speed mode)

17 Pairing button

18 Battery cover

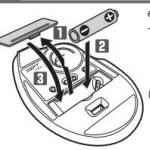
19 Battery storage section

20 Receiver unit storage section

21 USB connector (male)

1 Insert battery

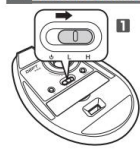
Only when connecting 2.4 GHz wireless, Bluetooth



- Can be used without batteries when connected by cord.
- 1 Remove the battery cover.
- 2 Insert battery according to instructions displayed on the bottom surface.
- 3 Re-attach the battery cover to its original state.

2 Turn the power ON

Only when connecting 2.4 GHz wireless, Bluetooth



- Operates with both the power ON/OFF when connected by cord. There is no difference between H (High speed mode) and Low energy mode.
- 1 Slide the power mode selection switch to either the H (High speed mode) or L (Low energy mode) position.
- In H (High speed mode), tracking performance becomes greater when moving the ball quickly, but battery life is shortened.
- The LED lamp is lit red for a fixed time.
- When remaining battery is low, the LED blinks red for a fixed time.

3 Connecting to a PC

For wired connection

- 1 Connect the attached USB cable to the USB microB port on this product.
- 2 Start up the PC.
- 3 Insert the USB connector of this product into the USB port of the PC.
- 4 The driver is automatically installed and the trackball can be used.

When connecting by 2.4 GHz wireless

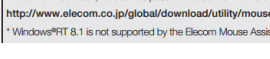
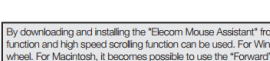
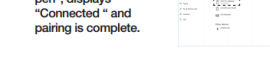
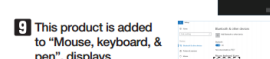
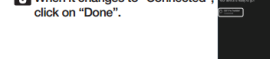
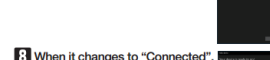
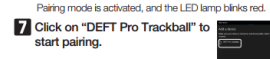
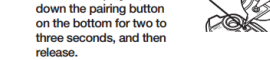
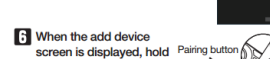
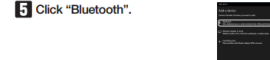
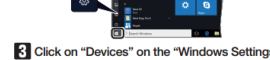
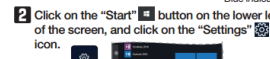
- 1 Start up the PC.
- 2 Change the connection mode selection switch to "2.4 GHz wireless".
- 3 Insert the receiver unit into a USB port on the PC.
- 4 The driver is automatically installed and the trackball can be used.

When connecting my Bluetooth connection

The pairing method may differ depending on the PC you are using. In that case, please read the instruction manual for your PC.

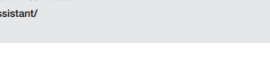
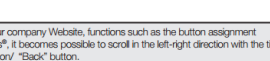
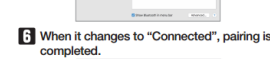
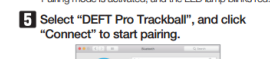
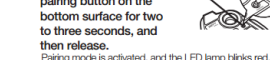
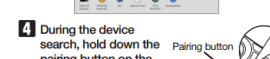
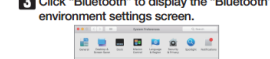
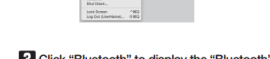
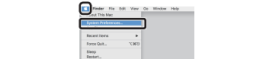
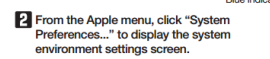
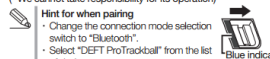
For Windows® 10

- 1 Change the connection mode selection switch to "Bluetooth".
- 2 Click on the "Start" button on the lower left of the screen, and click on the "Settings" icon.
- 3 Click on "Devices" on the "Windows Settings" screen.
- 4 Click on "Bluetooth & other devices", and click on "Add Bluetooth or other device".
- 5 Click "Bluetooth".
- 6 When the add device screen is displayed, hold down the pairing button on the bottom for two to three seconds, and then release.
- 7 Click on "DEFT Pro Trackball" to start pairing.
- 8 When it changes to "Connected", click on "Done".
- 9 This product is added to "Mouse, keyboard, & pen", displays "Connected" and pairing is complete.



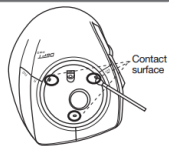
For Windows® 7

- 1 Change the connection mode selection switch to "Bluetooth".
- 2 From the Apple menu, click "System Preferences..." to display the system environment settings screen.
- 3 Click "Bluetooth" to display the "Bluetooth" environment settings screen.
- 4 During the device search, hold down the pairing button on the bottom surface for two to three seconds, and then release.
- 5 Select "DEFT Pro Trackball", and click "Connect" to start pairing.
- 6 When it changes to "Connected", pairing is completed.



How to clean the trackball

- 1 Use a finger (or a pen) to push the ball out from the reverse side.
- 2 Use a cotton bud or similar to remove the dust accumulated on the three contact surfaces of the red ball.
- 3 When cleaning around the optical sensor, take care not to damage the sensor.



Specifications

Count number	500/1000/1500 count (switchable)	Weight	Trackball main unit: Approximately 260 g (not including batteries) Receiver unit: Approximately 2 g
Interface	USB * For wired/wireless 2.4 GHz connection mode	Operational temperature/humidity	5°C to 40°C (up to 90%RH (without condensation however))
Connector shape	USB (A) male * For wired/wireless 2.4 GHz connection mode	Storage temperature/humidity	-10°C to 60°C (up to 90%RH (without condensation however))
Compatible OS	Windows® 10, Windows® 8.1, Windows® RT 8.1, Windows® 7, macOS High Sierra (10.13) * Support only for models with Bluetooth 4.0 or later installed as standard (You may need to update to the latest version of each OS or install service packs.)	Supported batteries	Any 1 of AA alkaline battery, AA manganese battery, AA-type nickel-metal hydride battery
Communication method	GFSK method (2.4 GHz connection) FHSS method (Bluetooth connection)	Operational time	Estimate when using alkaline battery Low energy mode Continuous operation time: Approximately 235 hours Continuous standby time: Approximately 1,851 days Estimated usage time: Approximately 534 days High speed mode Continuous operation time: Approximately 137 hours Continuous standby time: Approximately 1,851 days Estimated usage time: Approximately 325 days (The above is assuming the computer is used for eight hours a day with 6% of that time spent operating the trackball.)
Radio frequency	2.4 GHz band		
Radio wave range	Non-magnetic materials (such as wooden desks): approximately 10 m Magnetic materials (such as iron desks): approximately 3 m * These are test values in company environment and are not guaranteed.		
Read method	Optical sensor method		
Emitted light type	Non-visible wavelength range		
Number of buttons	8 * including wheel button		
External dimensions	Trackball main unit: W114.7 mm × D181.9 mm × H57.2 mm Receiver unit: W13.1 mm × D18.2 mm × H5.0 mm		




By downloading and installing the "Elecom Mouse Assistant" from our company Website, functions such as the button assignment function and high speed scrolling function can be used. For Windows®, it becomes possible to scroll in the left-right direction with the tilt wheel. For Macintosh®, it becomes possible to use the "Forward/download" button/ "Back" button.

http://www.elecom.co.jp/global/download/utility/mouse_assistant/














* Windows® RT 8.1 is not supported by the Elecom Mouse Assistant.

Safety Precautions




English (EN)

-  Prohibited action
-  Mandatory action
-  Situation that needs attention


WARNING

-  If a foreign object (water, metal chips) enters the product, immediately stop using the product, remove the receiver unit from the PC, and remove the batteries from the trackball. If used as is, it may cause a fire or electric shock.
-  If the product is behaving abnormally, such as by generating heat, smoke, or giving off a strange smell, immediately stop using the product, shut down the PC, and then after sufficiently checking for whether the product is generating heat without being burned, remove the receiver unit from the PC, and remove the batteries from the trackball. After that, please contact your dealer. If used as is, it may cause a fire or electric shock.
-  Please do not drop or bump this product. In the unlikely event that this product is damaged, immediately stop using the product, remove the receiver unit from the PC, and remove the batteries from the trackball. After that, please contact your dealer. If used while still damaged, it may cause a fire or electric shock.
-  Do not attempt to disassemble, modify or repair this product. Doing so may cause a fire, an electric shock, or malfunction.
-  Please do not throw this product into a fire. Rupturing may cause fire or injury.
-  Please do not insert or pull out the receiver unit with wet hands. In addition, do not modify or forcibly bend the product. It will cause a fire or electric shock.
-  The receiver unit presents a swallowing hazard for children, so be sure to store it in a place out of the reach of children. It will cause a fire or electric shock.
-  Do not place this product in any of the following environments.
 - In a car exposed to sunlight, a place exposed to direct sunlight
 - In a place that becomes hot, such as around a heater
 - In a moist place or a place where condensation may occur
 - In a place where it is not flat or there is vibration
 - In a place where a magnetic field is generated, such as near a magnet
 - In a dusty place
-  This product does not have a waterproof structure. Use or store in a place not exposed to liquids such as water. Rain, water spray, juice, coffee, steam, sweat can also be the cause of malfunctions.
-  Only use this product with PCs and video game systems.
-  Do not use this product with any device that may significantly be affected in the case of this product malfunctioning.
-  If the trackball is not used for one month or more, remove the receiver unit from the PC.
-  When disposing of this product and the batteries, follow your local regulations and laws.

Batteries

-  For this product, use AA alkaline batteries, AA manganese batteries, or AA type nickel-metal hydride rechargeable batteries.
-  When not using this product for long periods of time, remove the batteries. This may cause fluid leak or malfunction.
-  Do not use batteries of different types or use a mixture of old batteries and new batteries. The batteries may leak fluid, causing a malfunction.

Cleaning the Product


- If the product body becomes dirty, wipe it with a soft, dry cloth.
-  Use of a volatile liquid (paint thinner, benzene, alcohol) may affect the material quality and color of the product.

Precautions on wireless

This product is a wireless device that can use the entire 2.4 GHz band, and is able to avoid the mobile entity identification device range. The GFSK method is adopted as the radio wave method, and the interference distance is 10 m.

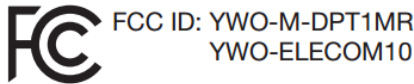
- Before using this product, check whether "other wireless stations" are not operating nearby.
- In the unlikely event that radio interference occurs between this product and "other wireless stations", change the location of use or stop using this product.
- * "Other wireless stations" refer to industrial, scientific, medical instruments which use the same 2.4 GHz as this product, as well as other wireless stations of the same type, such as in-house mobile entity identification wireless stations requiring a license, specific low power wireless stations and amateur wireless stations not requiring a license, used in plant production lines.

WARNING

-  Do not use in equipment which may cause serious effects due to it malfunctioning. In rare cases, it may be affected by radio waves of the same frequency or radio waves of mobile phones from outside, causing a malfunction, deterioration in operation, or stop working.
- Do not use this product in places where radio wave usage is prohibited, such as hospitals. Radio waves of this product may affect electronic devices and medical devices (for example pacemakers).
- Due to the possibility of hindering safe navigation of aircraft, use of wireless mice in aircraft is prohibited by the Civil Aeronautics Act. Turn off the power of the wireless mice before boarding and do not ever use after boarding.
- * Please note that we can not assume any responsibility, even if events such as an accident or social damage occur due to a failure of this product.

Limitation of Liability

- In no event will ELECOM Co., Ltd be liable for any lost profits or special, consequential, indirect, punitive damages arising out of the use of this product.
- ELECOM Co., Ltd will have no liability for any loss of data, damages, or any other problems that may occur to any devices connected to this product.




This device complies with Part 15 of the FCC Rules. Operation is subject to the following two conditions: (1) this device may not cause harmful interference, and (2) this device must accept any interference received, including interference that may cause undesired operation.

NOTE; This equipment has been tested and found to comply with the limits for a Class B Digital Device, pursuant to part 15 of the FCC Rules. These limits are designed to provide reasonable protection against harmful interference in a residential installation. This equipment generates, uses and can radiated radio frequency energy and, if not installed and used in accordance with the instruction, may cause harmful interference to radio communication. However, there is no grantee that interference will not occur in a particular installation. If this equipment does cause harmful interference to radio or television reception, which can be determined by tuning the equipment off and on, the user is encouraged to try to correct the interference by one or more of the following measures:

- Reorient or relocate the receiving antenna.
- Increase the separation between the equipment and receiver.
- Connect the equipment into an outlet on a circuit different from that to which the receiver is connected.
- Consult the dealer or an experienced radio/TV technician for help.

NOTICE: Changes or modifications not expressly approved by the party responsible for compliance could void the user's authority to operate the equipment.
In order to make improvements to this product, the design and specifications are subject to change without prior notice.

 **California Prop 65 WARNING:** This product contains a chemical known to the State of California to cause cancer and birth defects or other reproductive harm. For more information go to www.P65Warnings.ca.gov.



Compliance status
www.elecom.co.jp/global/certification/

Importer EU Contact :
Around The World Trading Inc.
Afon Building 223, Worthing Road Horsham,
RH12 1TL, United Kingdom

Trademark and name of the manufacturer:

ELECOM CO., LTD. www.elecom.co.jp/global/

<p>ELECOM Korea Co., Ltd. 5F Suam Bldg. 1358-17, Seocho2-dong, Seocho-gu, Seoul 137-862, Korea TEL : +82 (0) 2 - 1588 - 9514 FAX : +82 (0) 2 - 3472 - 5533 www.elecom.co.kr</p>	<p>ELECOM Sales Hong Kong Ltd. 2/F, Block A, 2-8 Watson Road, Causeway Bay, Hong Kong TEL : +852 2806 - 3600 FAX : +852 2806 - 3300 email : info@elecom.asia</p>
<p>新宜麗客(上海)商貿有限公司 上海市徐匯區肇嘉浜路1065甲號1603H室 電話 : +86 (0) 40 - 0867 - 3568 www.elecom.cn</p>	<p>ELECOM Singapore Pte. Ltd 33 UBI AVENUE 3 # 03-56. VERTEX SINGAPORE (408868) TEL : +65 6347 - 7747 FAX : +65 6753 - 1791</p>

- Unauthorised copying and/or reproducing of all or part of this manual is prohibited.
- The specifications and appearance of this product may be changed without prior notice for product improvement purposes.
- When exporting this product, check the export regulations for the country of origin.
- The Bluetooth® word mark and logos are registered trademarks owned by Bluetooth SIG, Inc. and any use of such marks by ELECOM CO., LTD. is under license.
- Windows and the Windows logo are trademarks of the Microsoft group of companies.
- macOS and Macintosh are trademarks of Apple Inc., registered in the U.S. and other countries.
- Company names, product names, and other names in this manual are either trademarks or registered trademarks.

A customer who purchases outside Japan should contact the local retailer in the country of purchase for enquiries. In "ELECOM CO., LTD. (Japan)", no customer support is available for enquiries about purchases or usage in/from any countries other than Japan. Also, no foreign language other than Japanese is available. Replacements will be made under stipulation of the Elecom warranty, but are not available from outside of Japan.

Trackball mouse
Manual, Safety precautions, and Compliance with regulations
1st edition, March 12, 2018



©2018 ELECOM Co., Ltd. All Rights Reserved.