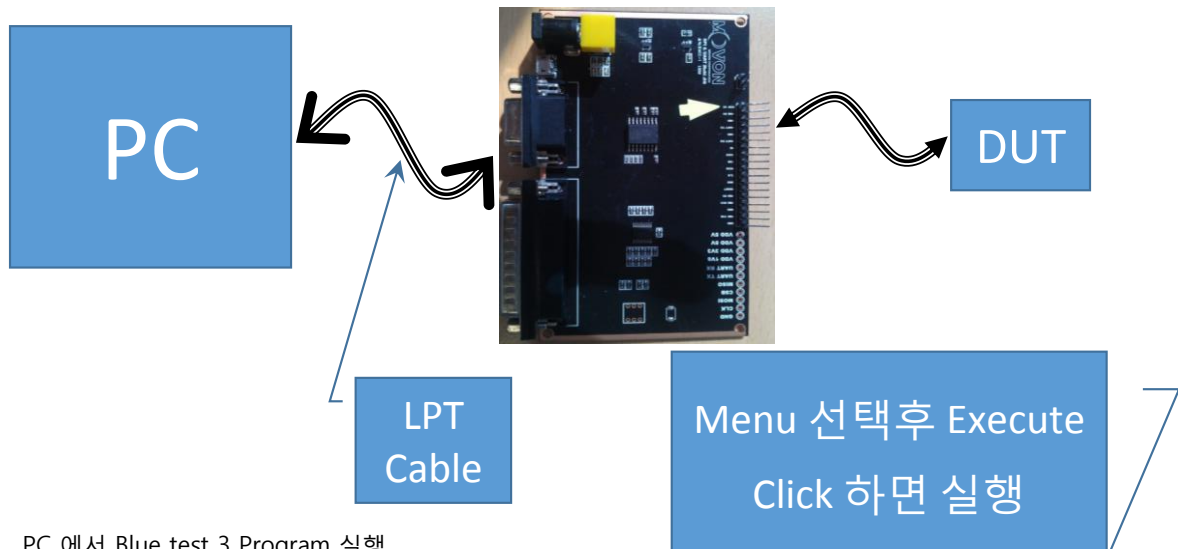
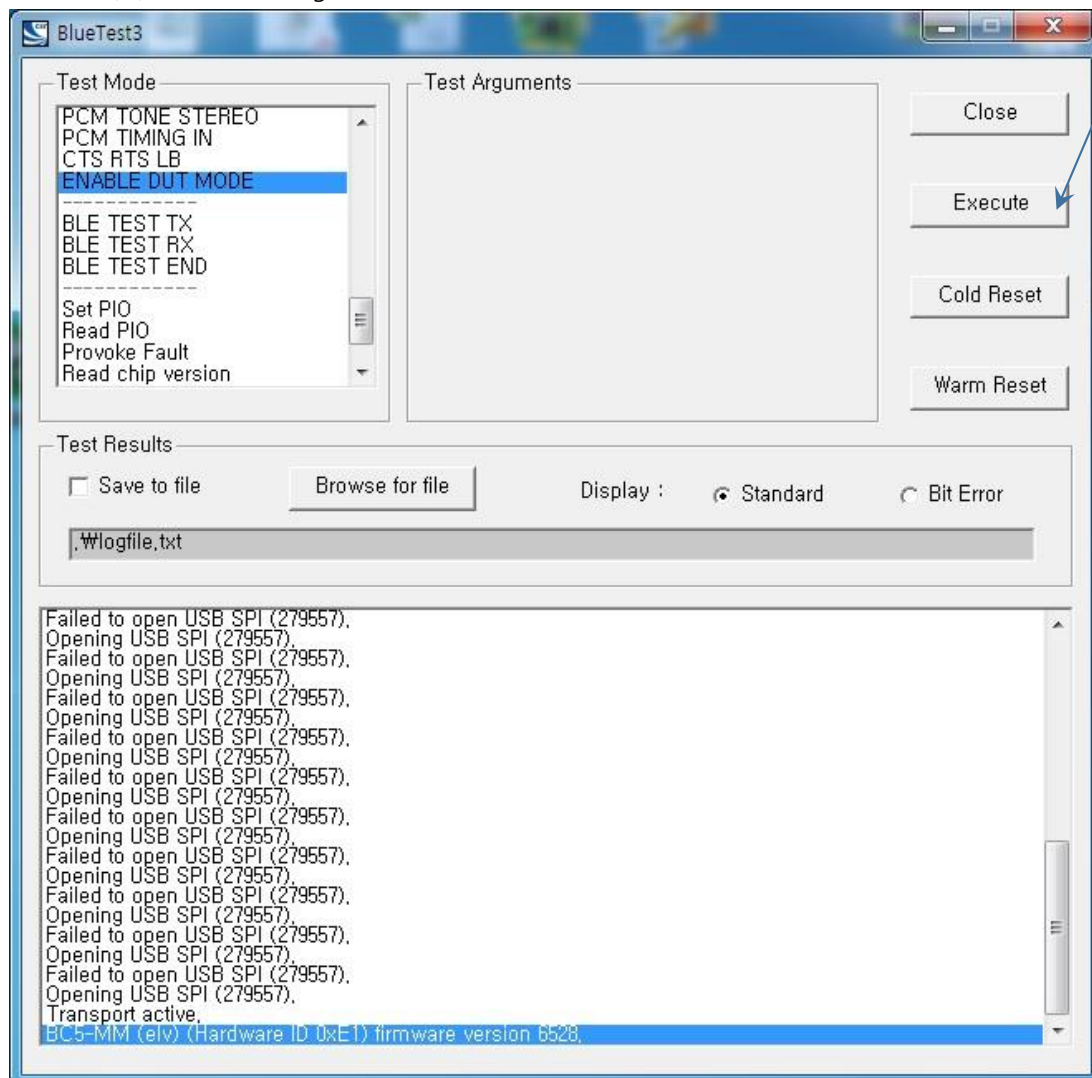


Tune-Up Procedure for Bluetooth



PC 에서 Blue test 3 Program 실행



Characteristic		Min.	Typ.	Max.	Unit
Output Power	Peak			11	dBm
Class II	Avg	0	2	6.6	dBm
Power Control		2		8	dBm
Modulation Chaeacteristics		140		175	kHz
Initial Carrier Frequency Tolerance		-75		75	kHz
Carrier Frequency Drift	DH1	-25		25	kHz
	DH3	-40		40	kHz
	DH5	-40		40	kHz
Sensitivity - single slot packets	DH1			-70	dBm
Sensitivity - multi slot packets	DH5			-70	dBm
Maximum Input Level				-20	dBm