



*ASWRB100
Touch Screen Remote Control*

USE & CARE GUIDE

FCC Statement

Changes or modifications not expressly approved by the party responsible for compliance could void the user's authority to operate the equipment.

This equipment has been tested and found to comply with the limits for a Class B digital device, pursuant to Part 15 of the FCC Rules. These limits are designed to provide reasonable protection against harmful interference in a residential installation. This equipment generates uses and can radiate radio frequency energy and, if not installed and used in accordance with the

instructions, may cause harmful interference to radio communications. However, there is no guarantee that interference will not occur in a particular installation. If this equipment does cause harmful interference to radio or television reception, which can be determined by turning the equipment off and on, the user is encouraged to try to correct the interference by one or more of the following measures:

- Reorient or relocate the receiving antenna.
- Increase the separation between the equipment and receiver.
- Connect the equipment into an outlet on a circuit different from that to which the receiver is connected.
- Consult the dealer or an experienced radio/TV technician for help

This device complies with part 15 of the FCC rules. Operation is subject to the following two conditions (1) this device may not cause harmful interference, and (2) this device must accept any interference received, including interference that may cause undesired operation.

This device has been evaluated to meet general RF exposure requirement. The device can be used in portable exposure condition without restriction.

TABLE OF CONTENTS

Page	Description
2	<i>Safety instructions</i>
3	<i>Part names</i>
5	<i>FEATURES</i>
6	<i>Floor unit setup</i>
11	<i>Touchscreen remote setup</i>
15	<i>Care & maintenance</i>
17	<i>Alert screens</i>
19	<i>Floor Unit Specs</i>
20	<i>Touchscreen remote Specs</i>

IMPORTANT SAFETY INSTRUCTIONS

When using electrical appliances, basic safety precautions should be followed, including the following:

WARNING - To reduce the risk of electrical shock, fire or injury to persons:

- Read all instructions before using the unit.*
- Use only a 120 volt outlet.*
- Do not use the unit if the power cord or plug is damaged or the connection to the wall outlet is loosened.*
- Periodically remove dust from the plug.*
- Do not insert fingers or foreign objects into the air intake or air outlet.*
- When removing the power plug, always hold the plug and never pull on the cord.*
- Electrical shock and/or fire from a short circuit may occur as a result.*
- Do not remove the plug when your hands are wet.*
- Do not use this unit near gas appliances or fireplaces.*
- When refilling the water tank, cleaning the unit, or when the unit is not in use, be sure to unplug the unit. Electrical shock and/or fire from a short circuit may occur as a result.*
- If the power cord is damaged, it must be replaced by the manufacturer, its service agent, an AireSpa Service Center or similarly qualified person in order to avoid a hazard.*
- Do not operate when using aerosol insecticides or in rooms where there is chemical fumes in the air, or in locations where the unit may get wet, such as a bathroom.*
- Be cautious when cleaning the unit. Strong corrosive cleansers may damage the exterior.*
- Only an AireSpa Authorized Service Center should service this product. Contact the nearest Service Center for any problems, adjustments, or repairs.*
- When carrying the unit, empty the Water Tank and hold the unit by handle.*
- Do not drink the water in the Humidifying Tray or Water Tank.*
- Change the water in the Water Tank regularly with fresh tap water and periodically clean the Water Tank and Piezo. (See Page 15).*
- The socket-outlet shall be installed near the equipment and shall be easily accessible*

PART NAMES

1



1. Floor Unit
2. Touchscreen Remote
3. Remote Adaptor
4. Aroma Wheel
5. Water Pitcher
 - M. Pitcher
 - N. Drain adapter
 - P. Handle
6. Three Stage Filter Set
 - Q. Carbon
 - R. HEPA
 - S. Pre filter

2



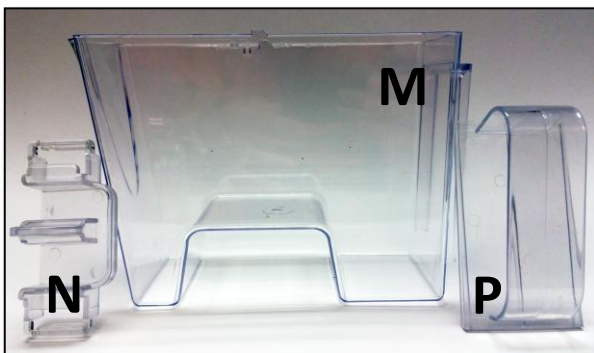
3



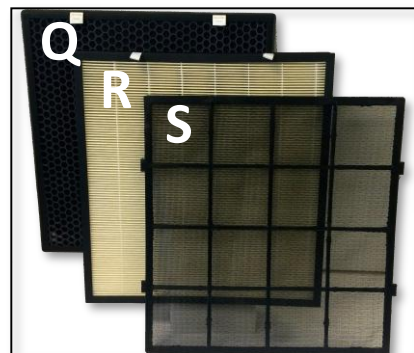
4



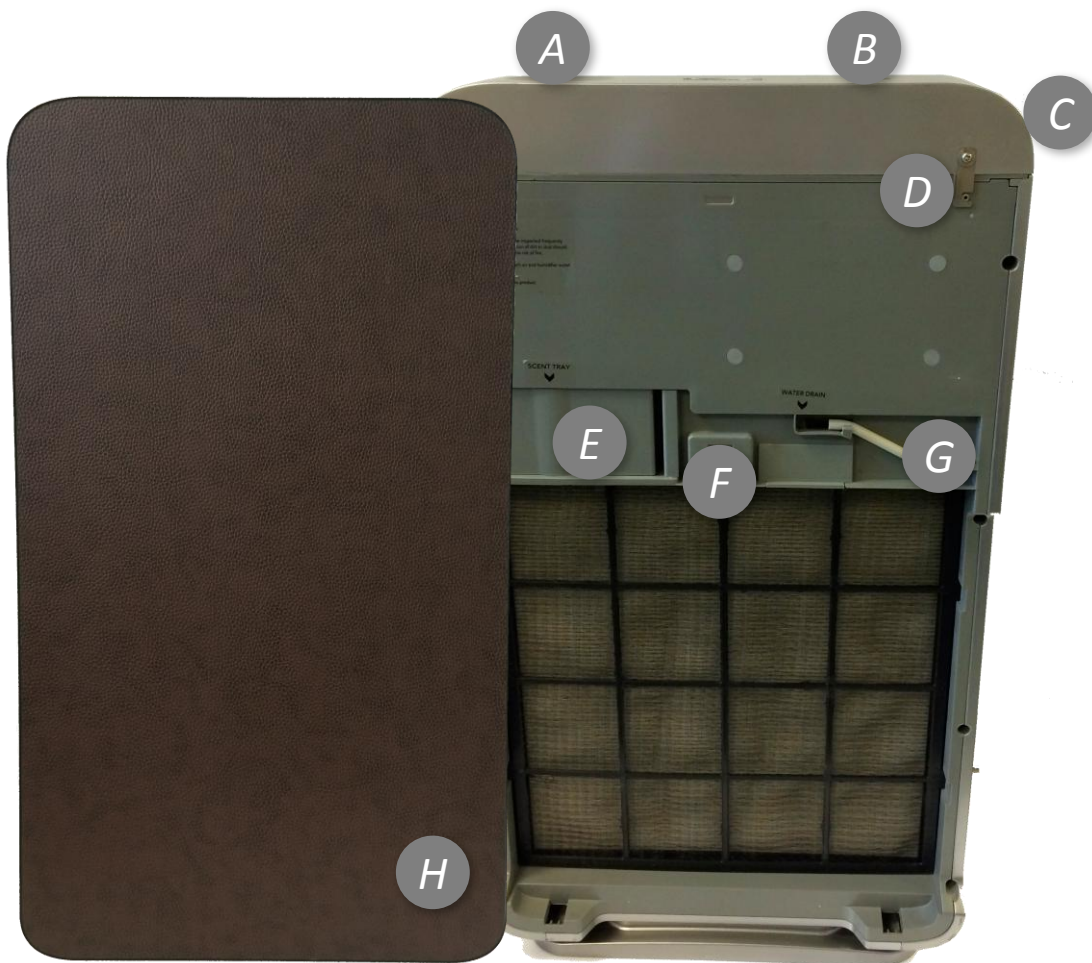
5



6



CONTINUED PART NAMES



- A. Mist output port
- B. LED Functionality indicators
- C. Water Tank latch
- D. Water Tank lock
- E. Aroma tray
- F. Water drain
- G. Piezo cleaning brush
- H. Front panel
- J. Air Outlet
- K. Carrying Handle
- L. Air Intake



FEATURES



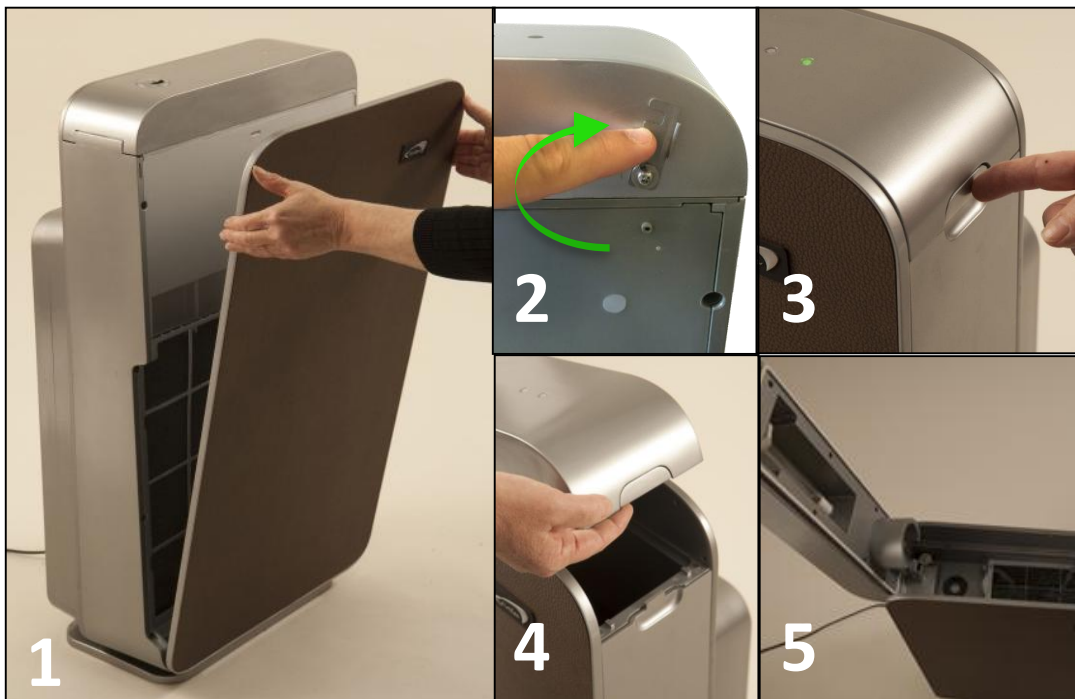
1. Air Purifier
2. Humidifier
3. Aroma
4. Soundscapes
5. Free Trial timer/ All Off button
6. Feature controls
7. Speakers (on back of unit)

FLOOR UNIT SETUP

1 *Unpack Unit*

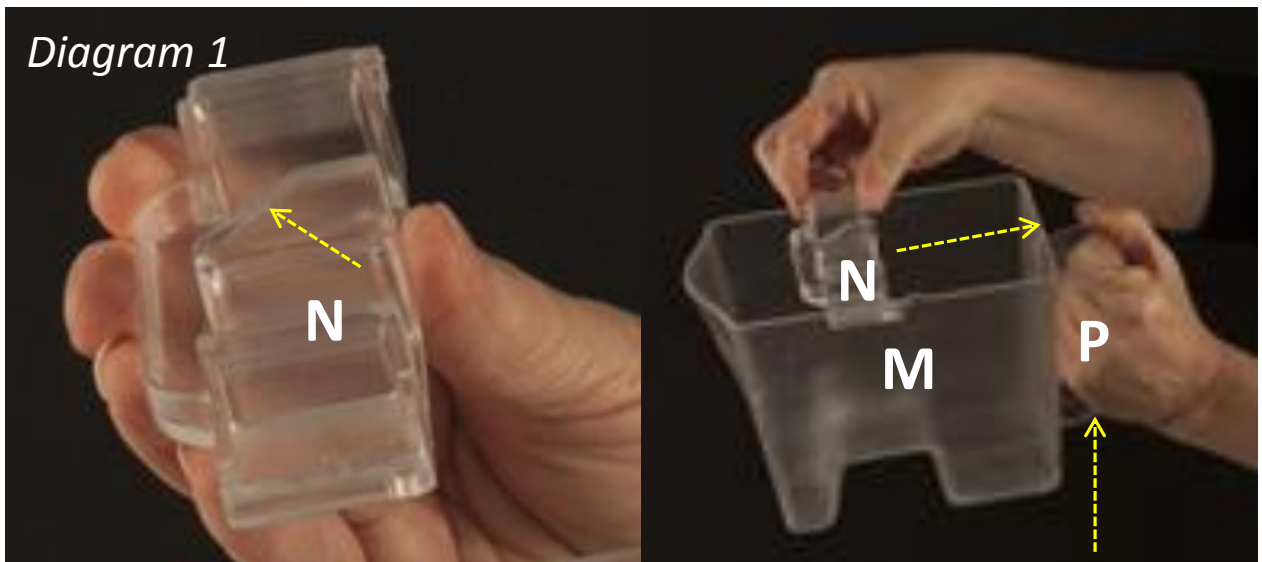
1. *Remove floor unit from box and plastic bag*
2. *Place unit in location designated by management*

2 *Remove water pitcher*



1. *Open front panel by pulling from top [Diagram 1]*
2. *Unhook water tank lock [Diagram 2]*
3. *Press-in side latch of floor unit [Diagram 3]*
4. *Carefully lift lid until fully open [Diagram 4]*
5. *Remove bag with water pitcher and assemble as shown on Page 6*
6. *Fill tank with tap water to MAX FILL LINE [Diagram 5], using the water pitcher*
7. *Close water tank lid.*

3 Assemble Water Pitcher



1. Remove all packaging
2. Attach pitcher handle [Part P] by sliding it up as shown above
3. Hold the drain adapter [Part N] in hand, with angled fin [as shown in diagram 1] facing the lip of the pitcher
4. Place drain adapter [Part N] onto top edge of water pitcher [Part M] and slide back until drain adapter clicks onto water pitcher

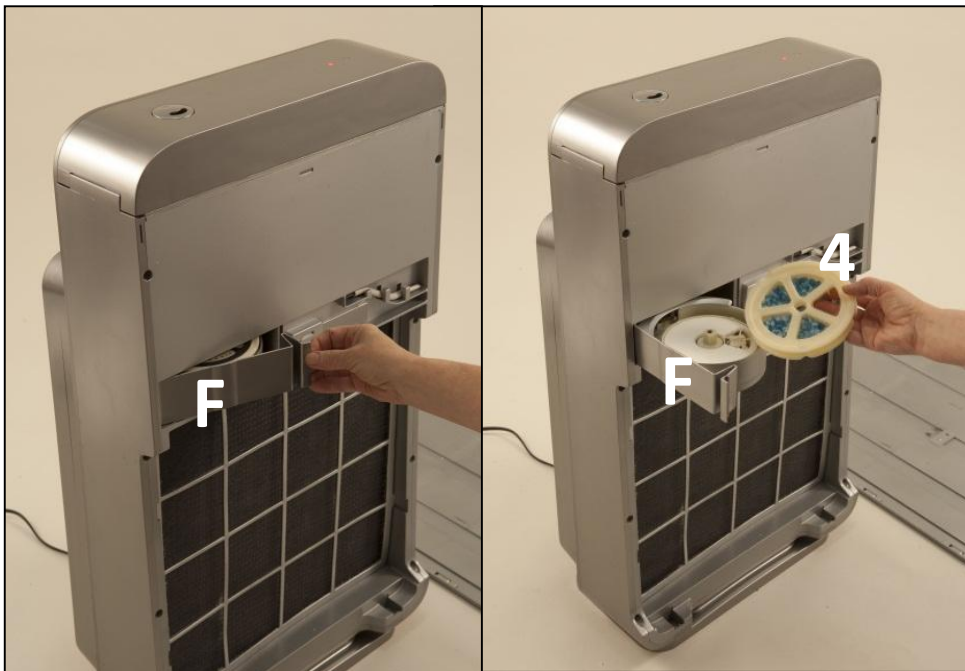
4 *Install the filter*



1. *Remove all filters from unit*
2. *Remove all packaging from True HEPA, Carbon and Washable Pre-Filters*
3. *Insert Carbon filter [Part Q]*
4. *Insert True HEPA air filter [Part R]*
5. *Insert Washable Pre-filter [Part S]*

Note: *When installing the filters
Use pull tabs located on top front of all filters;
pre-filter has side tabs that hold all filters
in place. These tabs should all be facing
outward*

5 *Insert Aroma tray*



1. *Grasp aroma tray handle, and press to left to release and pull open [Part F]*
2. *Remove aroma wheel from packaging [Part 4]*
3. *Place aroma wheel into aroma tray [Part F]*
4. *Push aroma door closed until locked in place*

Note: *The post with flat face in center of tray must be aligned with aroma wheel center hole.*

6 *Close front panel*



1. *Close front panel*
 1. *Place lower hinges into slots on unit*
 2. *Push front panel toward the unit until magnets lock in place*
2. *Plug unit in outlet*

TOUCHSCREEN REMOTE SETUP

1 Placement and plug-in



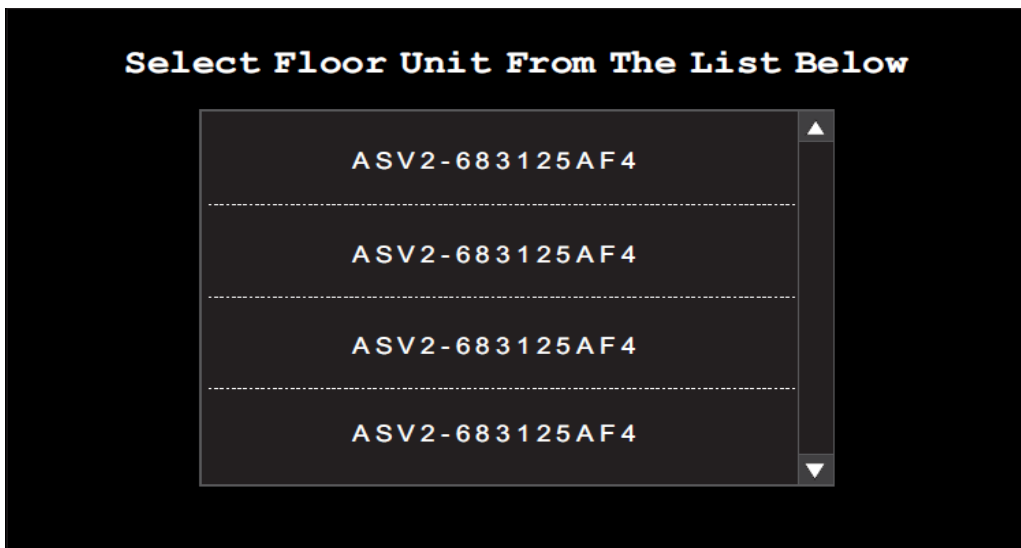
1. Remove remote from box and plastic bag
2. Plug bedside tablet into provided 3-plug adapter and plug into wall outlet nearest to bed
3. Press and hold tablet POWER BUTTON on bottom of the tablet

Note: Tablet will automatically start to display software SET UP

2 *Software SET UP*



1



*TOUCH CORRECT FLOOR UNIT MODEL
(located on label of floor unit)*

2

Please Enter Hotel Code and Room Number

_____ - _____

HOTEL CODE ROOM NUMBER

1 2 3 4 5 6 7 8 9 0
Tab q w e r t y u i o p
Caps Lock a s d f g h j k l
↑ z x c v b n m ! , ? . ↑
?123 :-) English(US

INPUT HOTEL AND ROOM NUMBER, PRESS ENTER

3

You Have Selected

HOTELNAME: Caesars Atlantic City - Octavia
ROOM NUMBER: 14-273A
FLOOR UNIT: ASV2 - 32ACD193

Please Review Your Selections?

EDIT CONTINUE

CONFIRM SETUP SELECTION

If selections are accurate press CONTINUE button to complete setup

Note: *To change selections press the EDIT button*

Setup Complete

SCREEN DISPLAYS WHEN SETUP FINALIZES

You Have Selected

HOTELNAME: **Invalid Hotel Code**

ROOM NUMBER: **Invalid Room Number**

FLOOR UNIT: **Cannot Connect**

Please Review Your Selections?

EDIT

CONTINUE

INVALID CODES WILL DISPLAY IN RED

CARE AND MAINTENANCE

1 Touchscreen remote & floor unit

To prevent dirt or stains on the unit, clean regularly. If stains are allowed to remain, they may become difficult to remove.

Before clean unit, please power off floor unit.

Wipe with a dry, soft cloth

For stubborn stains or dirt, use a soft cloth dampened with warm water.

Do not use volatile fluids

Benzene, paint thinner, polishing powder, may damage the surface.

Do not use detergents

Detergent ingredients may damage the unit.

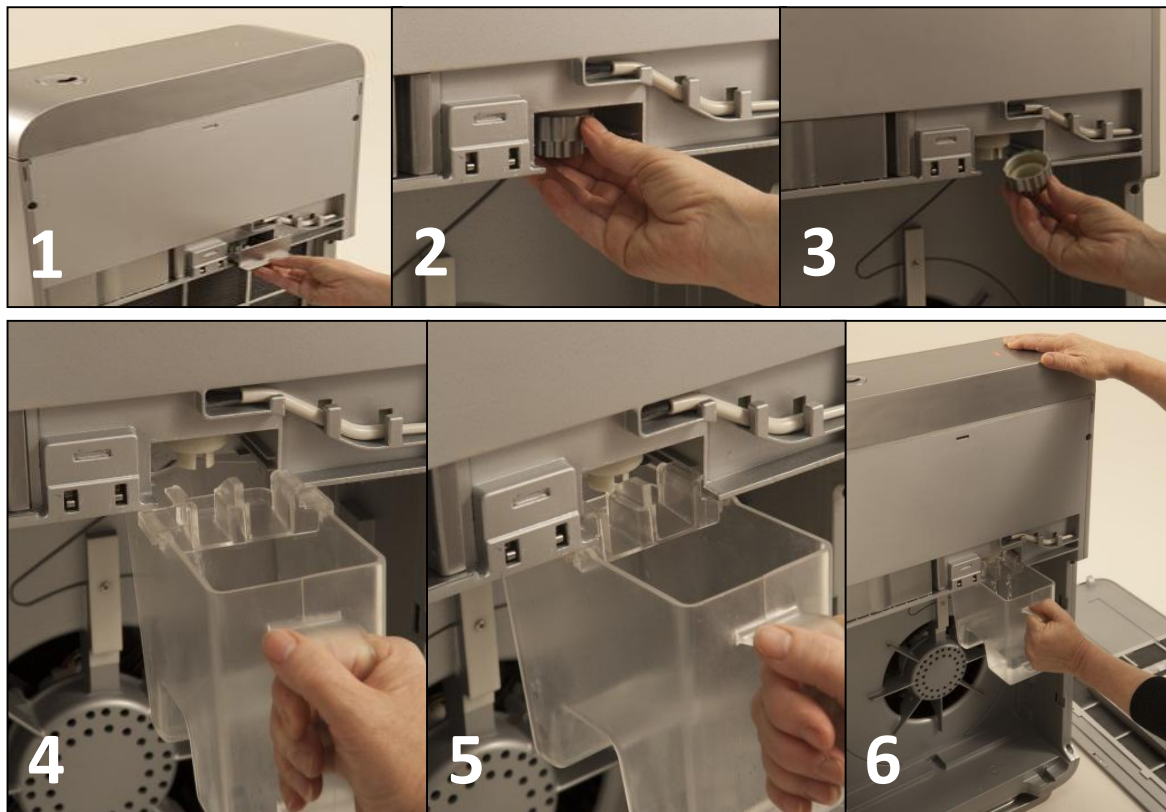
2 Piezo cleaning



1. *Remove piezo cleaning brush from holder (lift upward)*
2. *Carefully brush away calcified minerals and small debris that may build up around piezo*

3

Draining Water Tank (use water pitcher)



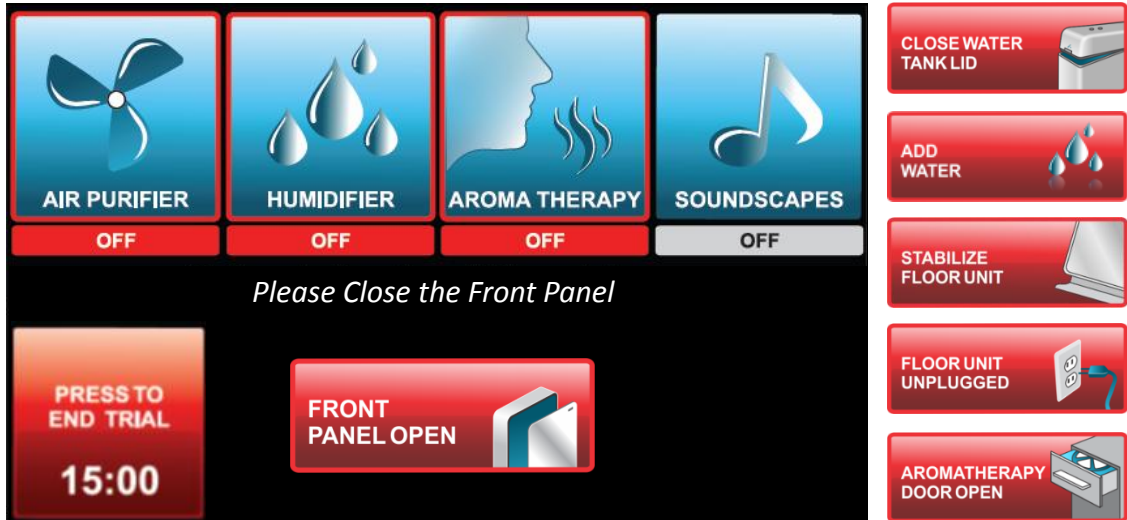
1. *Pull tab to remove cover of water drain*
2. *Twist water drain cap clockwise to remove*
3. *Remove water drain cap*
4. *Align fins on top of water pitcher with rails below the water drain*
5. *Gently slide forward to engage fins of water pitcher fully into rails*
6. *Place one hand on top of the unit, and press the water pitcher forward to engage water valve (water will drain into water pitcher). When pitcher is $\frac{3}{4}$ full, pull backward on pitcher to stop water flow. Repeat process until the water tank is empty.*

Note: *Hold pitcher firmly when removing (pitcher is heavy when full)*

7. *Reverse steps 1 – 6 to close drain*

Note: *Wipe any water below drain in filter chamber.*

ALERT SCREENS



GREEN LED

Unit has power and ready to use



RED LED

Action Required

- *Front Panel Open*
- *Top Lid Open*
- *Refill Water*
- *Unit Unstable*
- *Floor unit unplugged*
- *Aroma Tray Open*
- *Error contact housekeeping*

CAUTIONS CONCERNING OPERATION

- *Do not block the intake and/or air outlet.*
- *Do not use the unit near or on hot objects, such as stoves or heaters or where it may come into contact with steam.*
- *Always operate the unit in an upright position.*
- *Do not operate the unit without the filters, water tank, and aroma tray properly installed.*
- *Do not wash and reuse the True HEPA filter.*
 - *Washing will not improve filter performance, it may cause electric shock or malfunction.*
- *Clean the exterior with a soft cloth only.*
- *Do not use volatile fluids and/or detergents.*
 - *The unit surface may be damaged or cracked.*
 - *The sensors may malfunction as a result.*
- *Frequency of maintenance required (descaling) will depend on the hardness or the impurities of the water that you use; the harder the water the more often descaling will be necessary.*
- *Keep the unit away from water.*

INSTALLATION GUIDELINES

- *Avoid use in locations where furniture, fabrics or other items may come in contact with and restrict the air intake and/or air outlet.*
- *Place on a stable surface with sufficient air circulation.*
- *When placing the unit on a heavily carpeted area, the unit may vibrate slightly.*
- *Place the unit on an even surface to avoid water leakage from the Water Tank and/or Humidifying Tray.*
- *Avoid use in locations where grease or oily smoke is generated. (such as in a kitchen, etc.).*
- *The unit surface may crack as a result.*
- *Place the unit about ½ ft. (15 cm) away from the wall in order to ensure proper airflow.*
- *No any content about replacement accessories in user manual, for example: fragrance bead. In need of replacement, manufacturer or assigned person should supply service description.*

FLOOR UNIT SPECS

MODEL ASWR300 FLOOR UNIT: Air Purifier/Humidifier/Aromatherapy

Unit Size/Weight	H 31.0" x W 17.4" x D 9.9"	33.4 lbs
Room Size		300 Sq Ft.
Voltage		120V/1A
DC Motor Speeds: LOW/MED/HIGH/TURBO		4
Operating Temperature		0-40 Degrees C
Power Cord: 120V/60hz		3-Prong, Flat plug end, 90 Degree Angle, 12'
Bluetooth		V2.1 +EDR
Front Panel Open Sensor		Micro Switches
Tip-Over Switch		45°
Certifications: CETL, ROHS, FCC		
AIR PURIFIER		
CADR		170±10
Pre-Filter		Washable
Granular Active Charcoal Honeycomb: Odor & VOC Filter		Non-Washable
Real HEPA Air Filter		99.6%
Noise Level		dbA LOW: 38 MED: 40 HIGH: 46 TURBO: 55
HUMIDIFIER with ElectroSanitized Mist™		
Water Tank Capacity		0.8 Gallons
Water Tank Run Time		24 Hrs
Noise Level		38 dbA
Rotating Mist Outlet		90 Degrees, Finger Tip Control
Water Sanitizing Method		UV-C Bulb
Water Dimeineralization Cartridge		1
Low Water Level Sensor		1
Tank Water Level Sensor		0% 20%
AROMATHERAPY		
Aroma Pellets: Poly Propylene Infused with Aroma Oils		
Aroma Types:		4
Island Breeze, Vanilla Mist, Eucalyptus, Lavendar/Camomille		
ACCESSORIES		
Water Pitcher		1
Water Pitcher Snap-On Drain Part		1

TOUCHSCREEN REMOTE SPECS

MODEL ASWRT100 Touch Screen Remote Control with SoundScapes	
CTS MultiPoint EasyTouch® Remote Control	7" 16:9 Display
Screen Resolution	1024 x 600 Pixels
Processor:	Rockchip RK2928G
DDR	DDR3 512 MB
OS	Android 4.1
Internal Memory	Nand Flash 16.0 GB
External Memory	T Flash 32 GB Max
Lithium Battery	2000Mah, 3.7V
Power Cord: 120V/60hz	2-Prong, Flat plug end, 90 Degree Angle, 12'
Voltage/	120V/60hz/90W
Power Outlet Adapter [UL Certificate] 100 - 240V ~ / 50 - 60 Hz	2 Prong Plug
Unit Size/Weight H 4.750" X W 7.750 " X D 1.750 "	3 lbs
Blue	V2.1 +EDR
Wifi	Supports 802.11b/g
Taoglas Antenna	FXP14 HexaBand 2100 mhz
Luminance Transducer	Yes
Certifications: CETL, FCC, ROHS	
SOUNDSCAPES	
Speakers:	2
Soundscapes Categories: RELAX, SPA, SLEEP, NATURE	4
Soundscape Sounds: 4 Per Category [TTL 16]	16
Timer/OFF:	30/60/90
Volume Control	YES