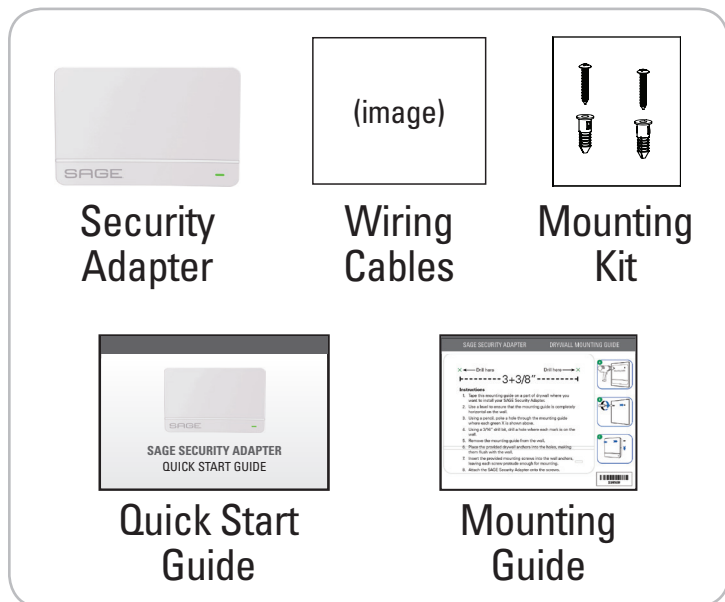


# PACKAGE CONTENTS



**SAGE**  
by HUGHES  
SECURITY & HOME AUTOMATION

For all your customer needs, go to [SAGEbyHughes.com](http://SAGEbyHughes.com).

## LIMITED WARRANTY

One-year Limited Warranty. Limited Warranty details are available at [SAGEbyHughes.com/warranty](http://SAGEbyHughes.com/warranty).

## REGULATORY INFORMATION

This Class B digital apparatus complies with Canadian ICES-003.  
Cet appareil numérique de la classe B est conforme à la norme NMB-003 du Canada.

This device complies with Part 15 of the FCC Rules and with Industry Canada licence-exempt RSS standard(s). Operation is subject to the following two conditions:

(1) This device may not cause harmful interference, and (2) This device must accept any interference received, including interference that may cause undesired operation. Le présent appareil est conforme aux CNR d'Industrie Canada applicables aux appareils radio exempts de licence. L'exploitation est autorisée aux deux conditions suivantes: (1) L'appareil ne doit pas produire de brouillage, et (2) L'utilisateur de l'appareil doit accepter tout brouillage radioélectrique subi, même si le brouillage est susceptible d'en compromettre le fonctionnement.

This equipment has been tested and found to comply with the limits for a Class B digital device, pursuant to Part 15 of the FCC Rules. These limits are designed to provide reasonable protection against harmful interference in a residential installation. This equipment generates, uses and can radiate radio frequency energy and, if not installed and used in accordance with the instructions, may cause harmful interference to radio communications. However, there is no guarantee that interference will not occur in a particular installation. If this equipment does cause harmful interference to radio or television reception, which can be determined by turning the equipment off and on, the user is encouraged to try to correct the interference by one or more of the following measures:

- Reorient or relocate the receiving antenna.
- Increase the separation between the equipment and receiver.
- Connect the equipment into an outlet on a circuit different from that to which the receiver is connected.
- Consult the dealer or an experienced radio/TV technician for help.

If none of the remedies stops the radio interference, you should contact a licensed radio/television technician, your satellite dealer, or visit [SAGEbyHughes.com](http://SAGEbyHughes.com) for assistance.

Product must be installed at least 20 cm (~8 inches) from typical person locations, per FCC RF exposure regulations.

Do not make changes or modifications to this equipment. This could void the user's authority to operate the equipment.



p/n 210432

Copyright © 2016 EchoStar Technologies L.L.C., Englewood, Colorado  
80112. All rights reserved. EchoStar is a registered trademark of  
EchoStar Technologies L.L.C. Other products, brands, and companies  
mentioned are the Trademarks of their respective owners. This product  
is designed and manufactured in the United States.



## SECURITY ADAPTER QUICK START GUIDE

# SETUP AND INSTALLATION

The SAGE Security Adapter allows you to integrate SAGE by Hughes with your existing home security system. Follow the instructions below to install your SAGE Security Adapter.

- 1 Using your SAGE remote, press HOME.
- 2 Select **Settings**.
- 3 Select **Add Devices**.
- 4 Select **Sensors**.
- 5 Select **Security Adapter**.
- 6 Follow the on-screen prompts to install and set up your SAGE Security Adapter, pair it to the SAGE Hub, and establish rules.

**IMPORTANT SAFETY NOTICE:** Do not begin installation of your SAGE Security Adapter until you have carefully reviewed the installation instructions for your SAGE Hub, which includes important safety information. Installing the SAGE Security Adapter without reviewing these instructions, turning off the electric power to your existing home security panel and disconnecting its battery, may damage the security panel, the SAGE Security Adapter, and any attached devices.

## INSTALLATION OVERVIEW

This page provides a general overview of how to integrate the SAGE Security Adapter into your existing home security system. For full instructions, visit [SAGEbyHughes.com](http://SAGEbyHughes.com) and download and/or print the installation instructions that correspond to your home security system. Step-by-step instructions will also be available on the TV connected to your SAGE Hub during installation.

- 1 Identify the brand and model of your existing home security system.
- 2 Choose where you want to install your SAGE Security Adapter: at your security system's central panel or at an individual keypad in your house.
- 3 If a company is monitoring your existing security system, notify them that you'll be temporarily shutting off the system to install the SAGE Security Adapter.
- 4 Wire the SAGE Security Adapter to your existing home security system.
- 5 Pair the SAGE Security Adapter to your SAGE Hub.
- 6 Mount the SAGE Security Adapter.
- 7 Set up security zones in your home.

