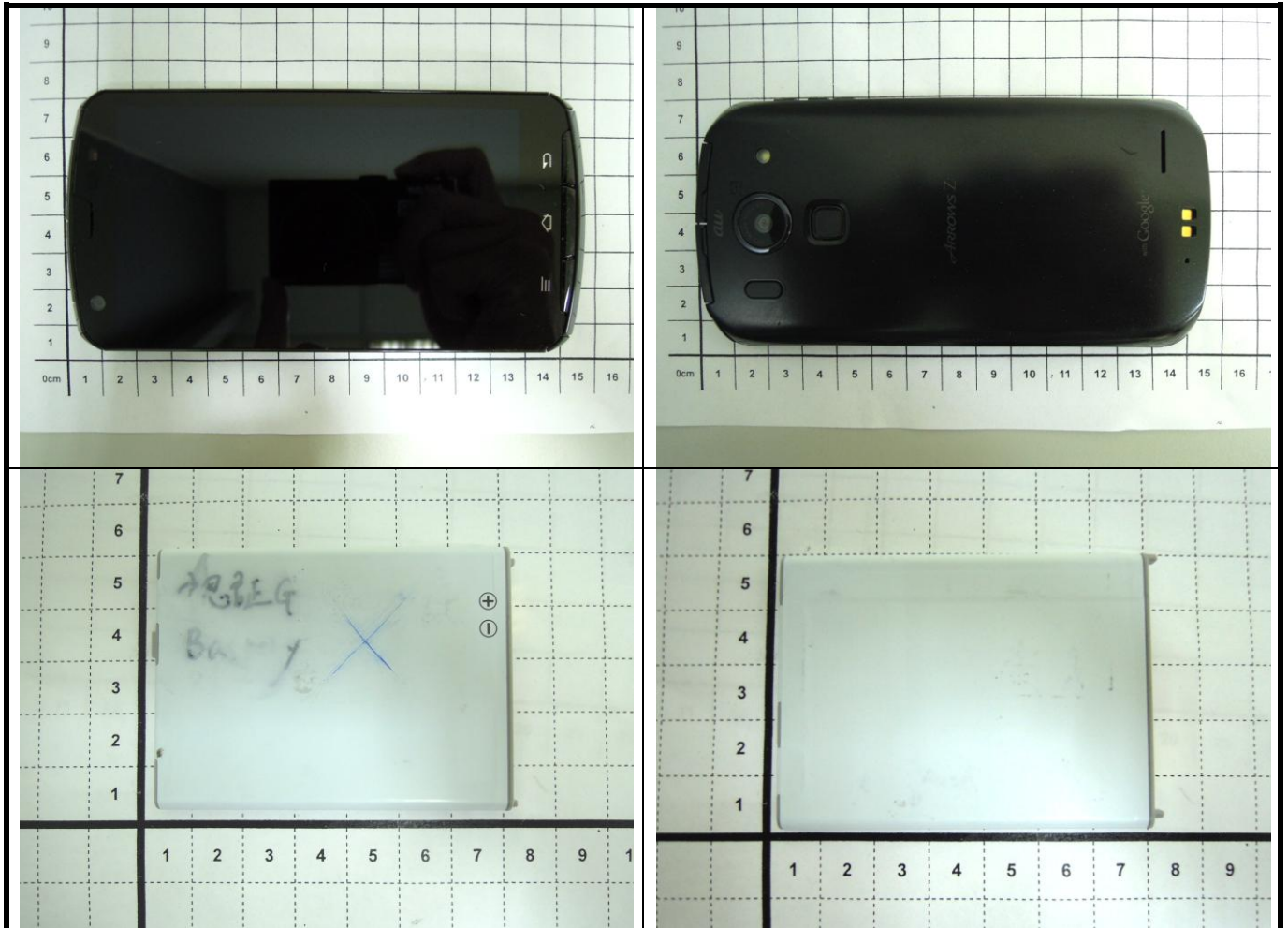
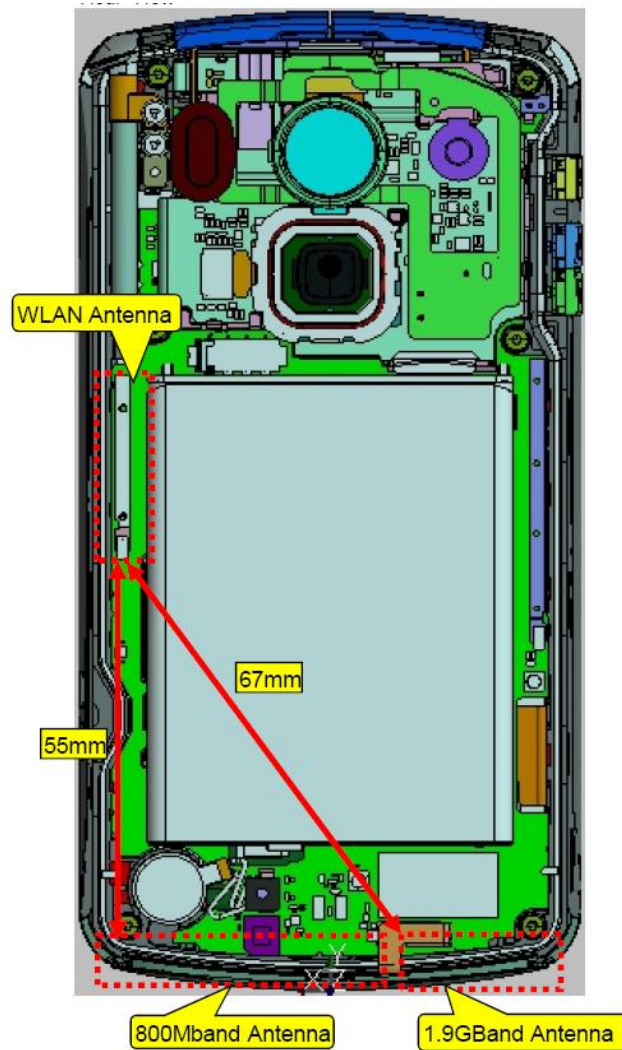


FCC SAR Test Report

<Photographs of EUT>



<Location of Antennas>



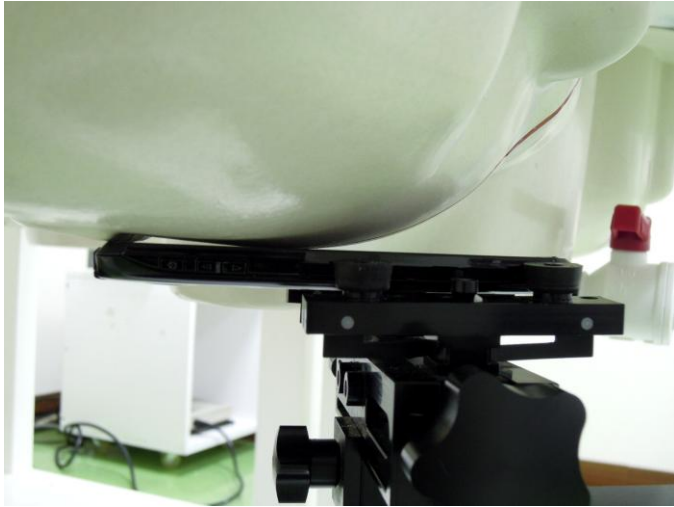
<EUT Rear View>

Note:

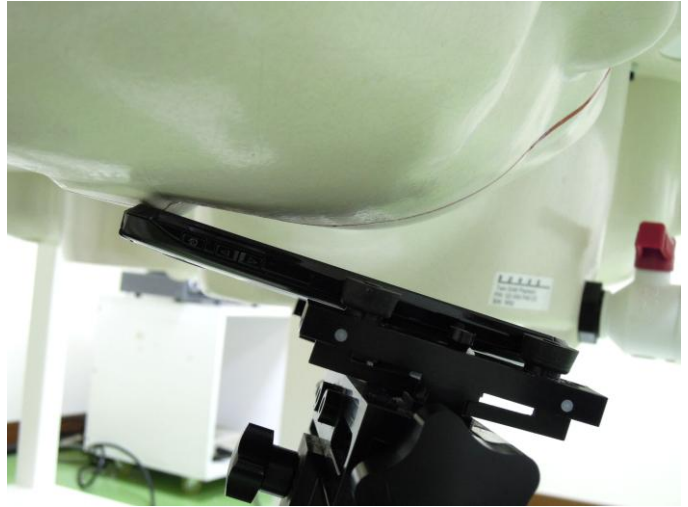
The antennas of WWAN (800 MHz and 1.9 GHz) cannot simultaneous transmission.

FCC SAR Test Report

<Photographs of SAR Setup>



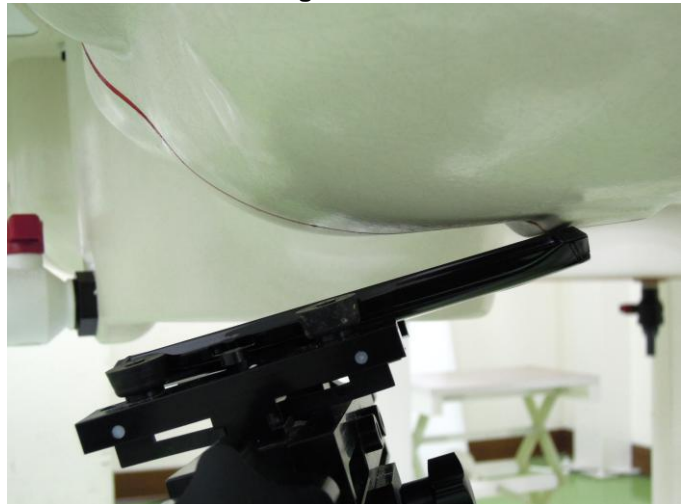
Right Cheek



Right Tilted



Left Cheek



Left Tilted



**Front Face of EUT with 1.0 cm Gap
(Body Worn Mode)**



**Rear Face of EUT with 1.0 cm Gap
(Body Worn Mode)**

FCC SAR Test Report



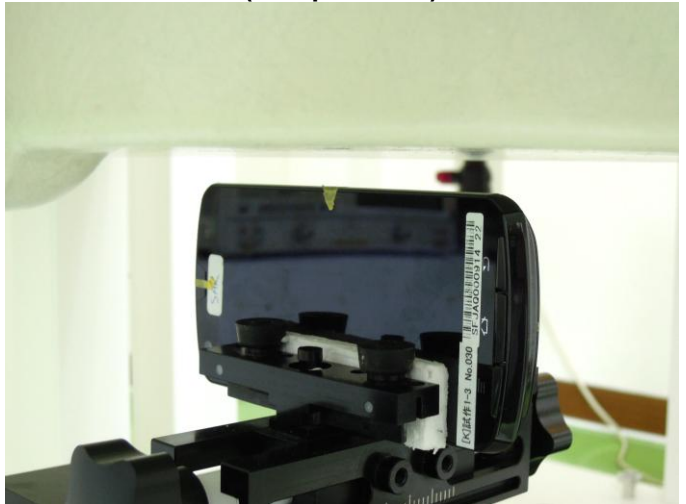
**Front Face of EUT with 1.0 cm Gap
(Hotspot Mode)**



**Rear Face of EUT with 1.0 cm Gap
(Hotspot Mode)**



**Left Side of EUT with 1.0 cm Gap
(Hotspot Mode)**



**Right Side of EUT with 1.0 cm Gap
(Hotspot Mode)**



**Bottom Side of EUT with 1.0 cm Gap
(Hotspot Mode)**