

Annex 2: Internal Photographs to
PARTIAL TEST REPORT
 No.: 6-0347-13-2-2e-C1

According to:
FCC Regulations
 Part 15.207, Part 15.225, Part 15.209

IC-Regulations
 RSS-Gen, Issue 4
 RSS-210, Issue 8
 ICES-003, Issue 5

for

Hach Lange GmbH

Benchtop device (EPA) TU5200 / LPG 442.99.03012

Contains FCC-ID: YUH-QR15HL
 Contains IC: 9278A-QR15HL







| Laboratory Accreditation and Listings | | | |
|--|---|--|--|
|  DAkks Deutsche Akkreditierungsstelle D-PL-12047-01-01 |  Reg. No.: 736496 MRA US-EU 0003 |  Industry Canada Reg. No.: 3462D-1 Reg. No.: 3462D-2 Reg. No.: 3462D-3 |  Voluntary Controls for Electromagnetic Emissions Reg. No.: R-2666 C-2914, T-1967, G-301 |
|  WiFi ALLIANCE AUTHORIZED RF LABORATORY |  CTIA Authorized Test Lab LAB CODE 20011130-00 | | |
| accredited according to DIN EN ISO/IEC 17025 | | | |
| <p align="center"> CETECOM GmbH Laboratory Radio Communications & Electromagnetic Compatibility Im Teelbruch 116 • 45219 Essen • Germany Registered in Essen, Germany, Reg. No.: HRB Essen 8984 Tel.: + 49 (0) 20 54 / 95 19-954 • Fax: + 49 (0) 20 54 / 95 19-964 E-mail: info@cetecom.com • Internet: www.cetecom.com </p> | | | |

Table of contents

| | |
|--|----------|
| 1. INTERNAL EUT PHOTOGRAPHS | 3 |
| 1.1. Overall view photographs | 3 |
| 1.2. Closer view photographs | 7 |
| 1.3. Integrated RF-modules photographs | 11 |

1. Internal EUT photographs

1.1. Overall view photographs



Photograph 1: EUT A Overall view



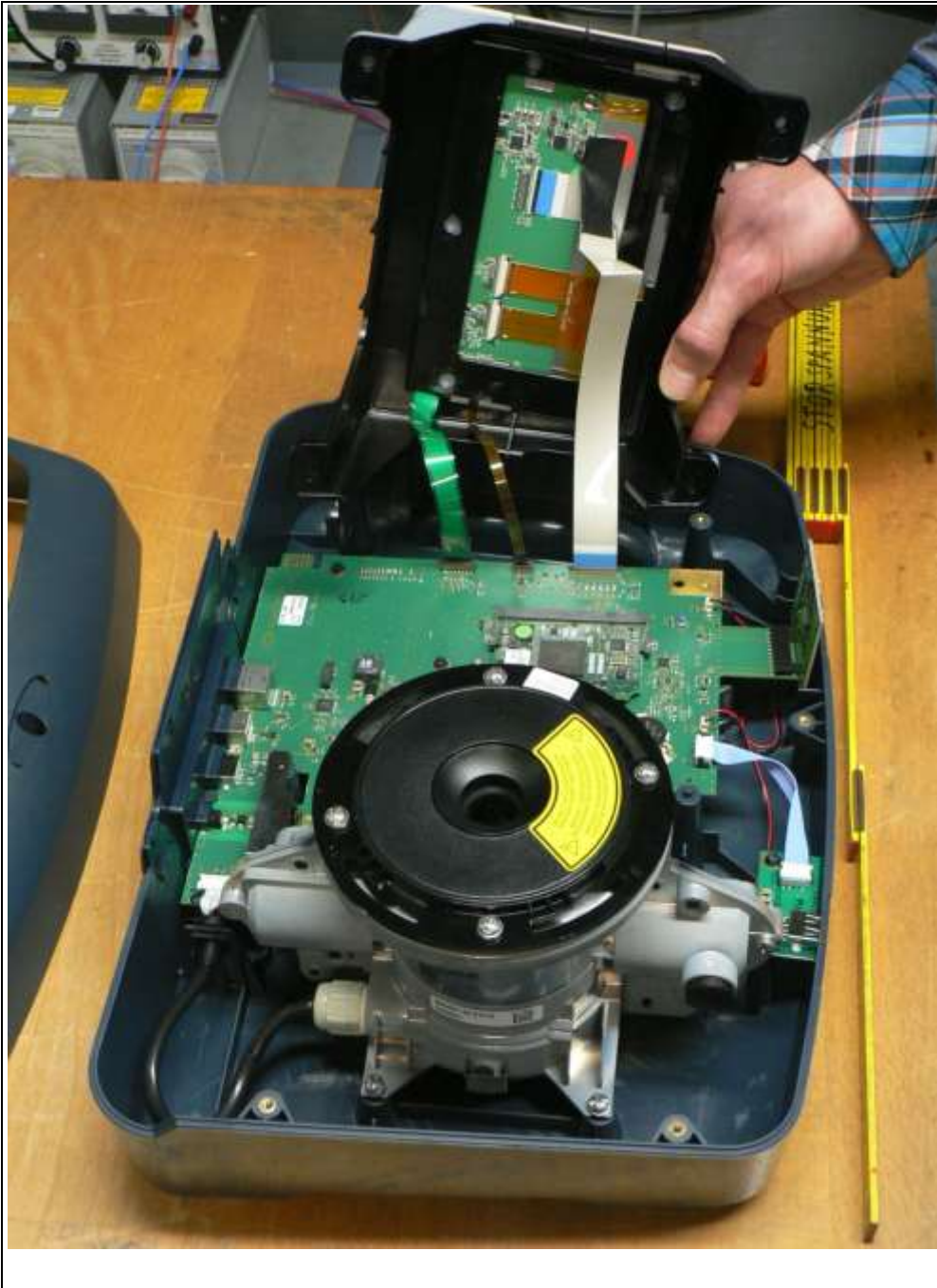
Photograph 2: EUT A - Cover removed



Photograph 3: Placement of RFID Module



Photograph 4: Main PCB of EUT A



Photograph 5: EUT A - Overall PCB Views

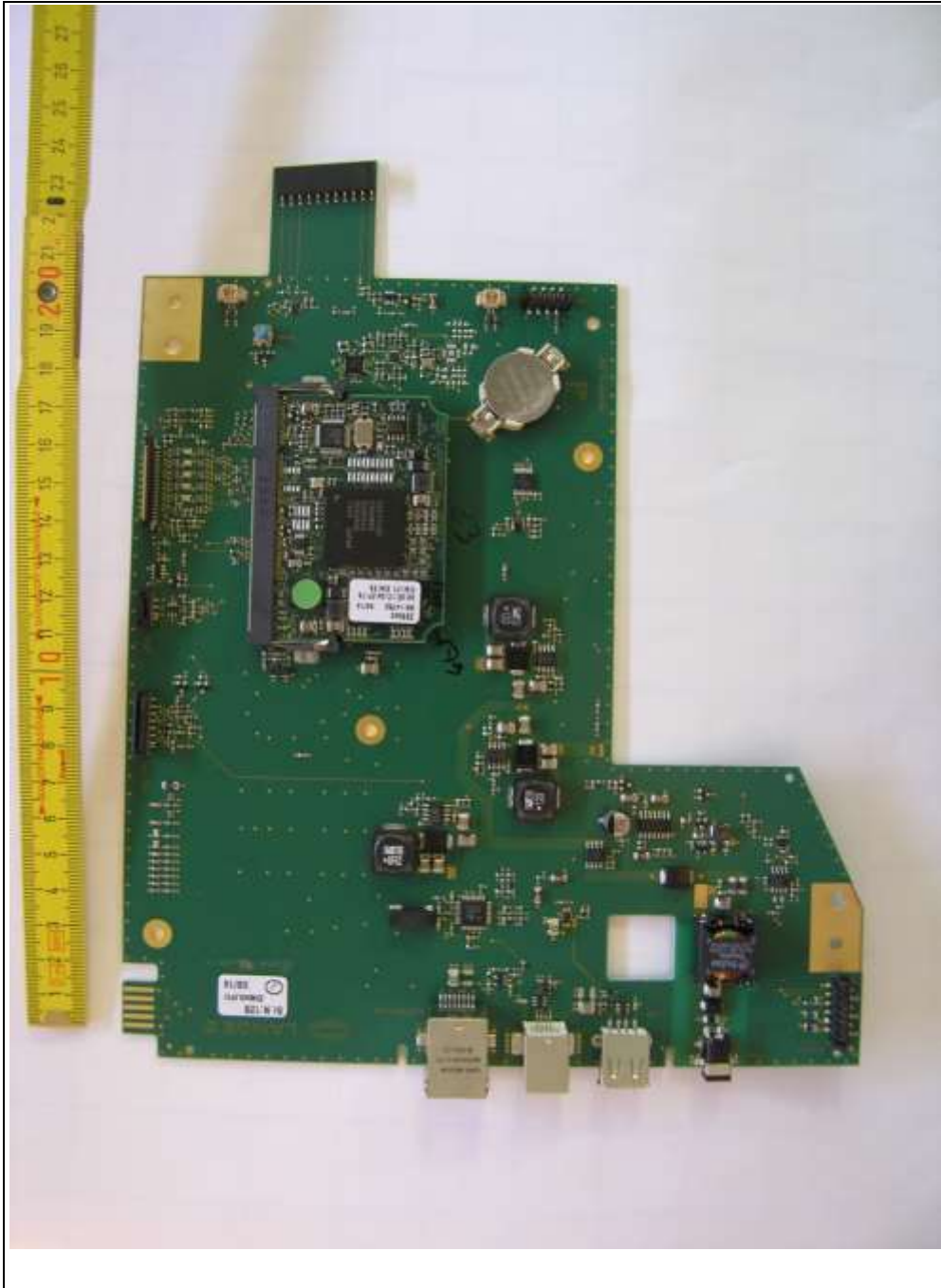


Photograph 6: EUT A secondary PCB

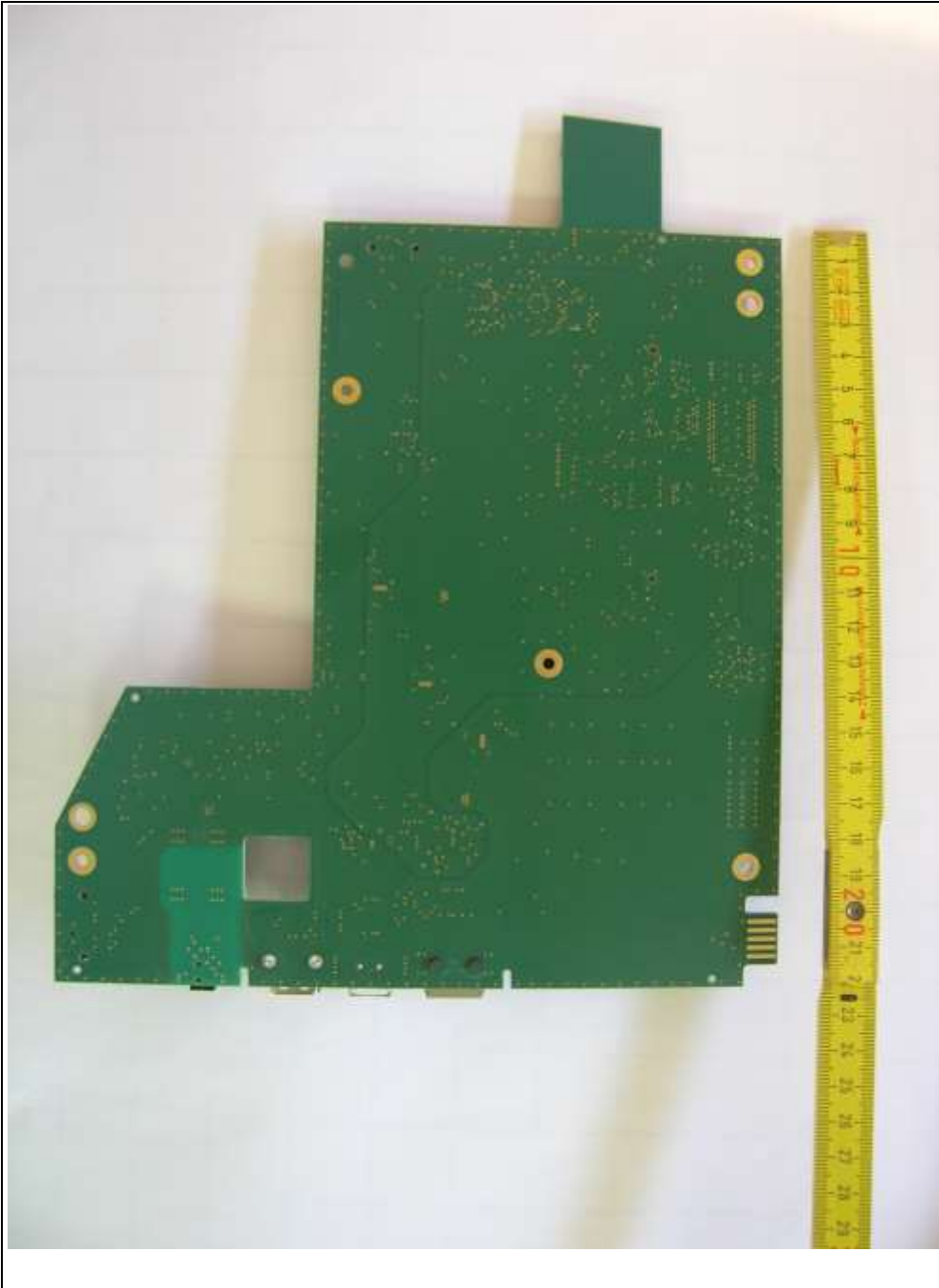
1.2. Closer view photographs



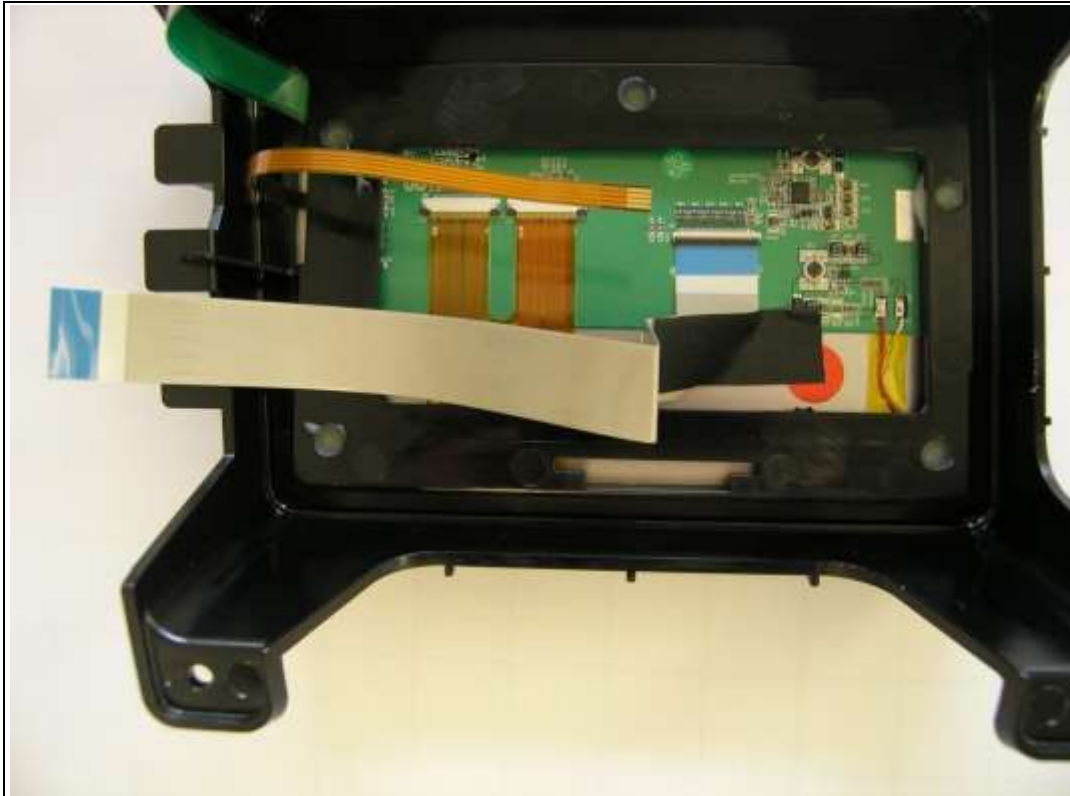
Photograph 7: EUT A main PCB, front side



Photograph 8: EUT A, main PCB front side

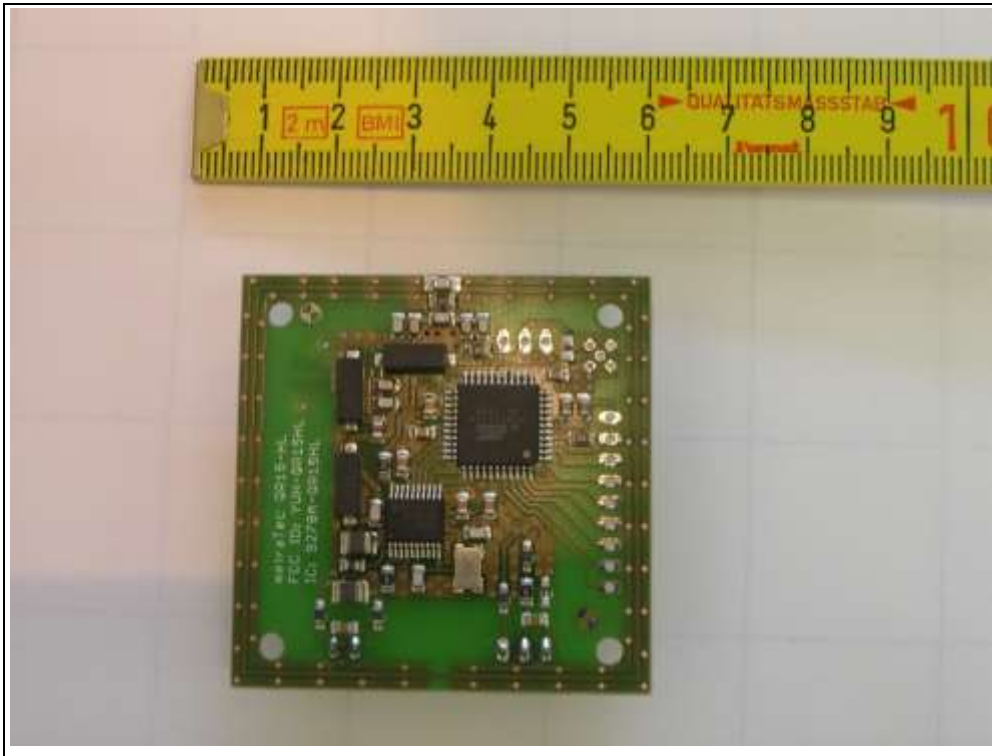


Photograph 9: EUT A, main PCB rear side

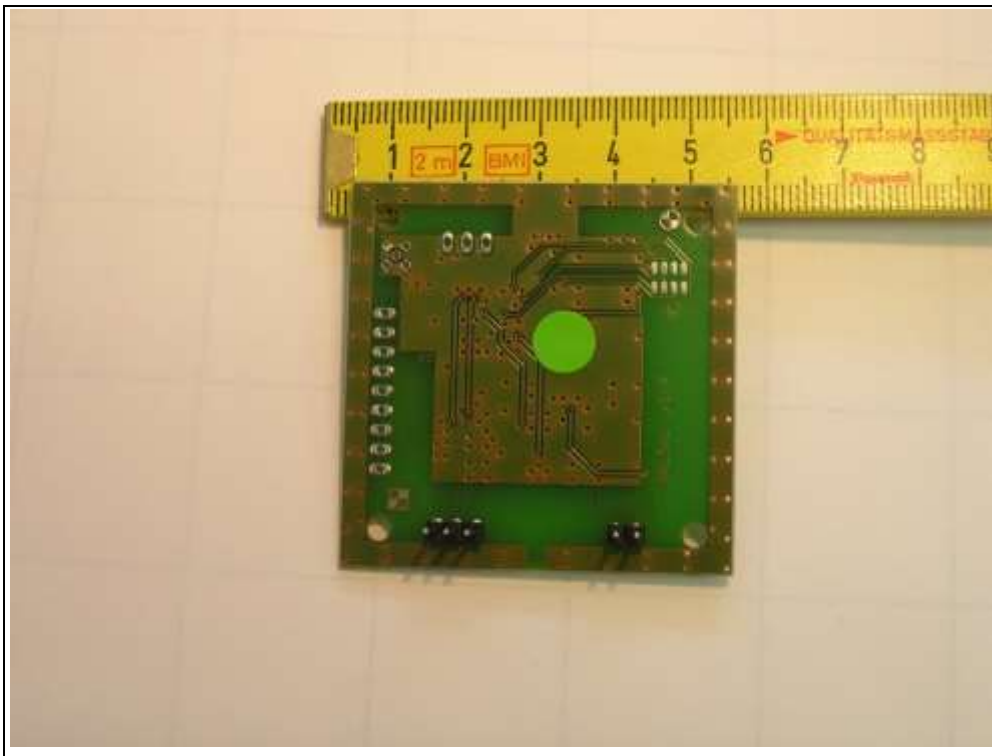


Photograph 10: EUT A, secondary PCB

1.3. Integrated RF-modules photographs



Photograph 11: RFID Module, front view



Photograph 12: RFID Module, rear view