



Charging the CLAMCASE™ Keyboard Battery

- 1. Insert the smaller end of the USB Charging Cable into the port on the right side of the CLAMCASE™ Keyboard.
- 2. Insert the larger end of the USB Charging Cable into your computer or an iPad® charger which is plugged into an electrical outlet. The Charge Indicator LED glows orange while charging.
- 3. Fully charge the battery (approximately 90 minutes) before initial use. The Charge Indicator LED turns green when the CLAMCASE™ Keyboard is fully charged.

***Note:** To check battery life at any time while using the CLAMCASE™ Keyboard, hold down fn + ctrl. The Power Pair LED flashes to indicate current battery life:*

# of Flashes	Battery Life
4	75-100%
3	50-75%
2	25-50%
1	0-25%

Cleaning Your CLAMCASE™

Follow these general rules when cleaning your CLAMCASE™. Be sure to remove your iPad® prior to cleaning.

- Use a damp, soft, lint-free cloth to clean the exterior and interior, avoiding the CLAMCASE™ Keyboard and any openings. Do not allow moisture in any openings.
- Do not allow any liquids to come into contact with the CLAMCASE™ Keyboard or openings.
- Do not use aerosols, solvents, or abrasives while cleaning.

Position Your CLAMCASE™



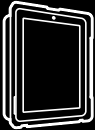
Keyboard Position

- Open the case so that the CLAMCASE™ Keyboard is resting on a table or your lap and utilize the full QWERTY keyboard.



Touchscreen Position

- Flip the CLAMCASE™ Keyboard upside down and position the screen in landscape view to achieve the perfect angle for any activity.



Desktop Position

- Set the CLAMCASE™ upright in portrait position for hands free viewing of photos and additional content.



Tablet Position

- Flip the CLAMCASE™ Keyboard all the way around to enjoy your iPad® tablet.

***Note:** To avoid inadvertent key hits, turn off the clamcase keyboard by holding down the power key for two seconds. When ready to use the keyboard again hold down the power key for two seconds to activate it.*

Troubleshooting

If your CLAMCASE™ isn't functioning properly upon receipt, go to clamcase.com, click Support, click Contact Support, and submit your issue to Customer Service. Be sure to have your order number and a good description of the issue when submitting.

If you are having issues working the CLAMCASE™ Keyboard or connecting to your iPad®, try the following solutions:

- ☐ Ensure the batteries of both the iPad® and the CLAMCASE™ Keyboard are charged.
- ☐ Ensure that Bluetooth® is set up correctly on the iPad®. Review your iPad® documentation for more information.
- ☐ Disconnect other Bluetooth® devices from the iPad®, and attempt to reconnect the CLAMCASE™ Keyboard.

- ☐ Reset the iPad® by holding down the Home button and the Lock button for two seconds.
- ☐ Insert a pin or a paper clip into the hole next to the USB Charging Port to reset the CLAMCASE™ Keyboard, and try to reconnect the CLAMCASE™ Keyboard.
- ☐ If none of the above fixes the issue, contact CLAMCASE™ support at clamcase.com/support.

Environmental Requirements

Follow these guidelines for the use of your CLAMCASE™ to ensure optimum performance. Only operate in temperatures between 32°F and 95°F (0°C to 35°C). Do not operate your CLAMCASE™ in high-humidity levels (above 95% non-condensing) Maximum non-pressurized operating altitude: 10,000 ft (3000 m).

FCC Compliance Statement

The equipment has been tested and found to comply with limits for a Class B digital device, pursuant to Part 15 of the FCC Rules. These limits are designed to provide reasonable protection against harmful interference in a residential installation. This equipment generates, uses and can radiate radio frequency energy and, if not installed and used in accordance with instructions, may cause harmful interference to radio communications. However, there is no guarantee that interference will not occur in a particular installation. If this equipment does cause harmful interference to radio or television reception, which can be determined by tuning the equipment off and on, the user is encouraged to try to correct the interference by one or more of the following measure:

- Reorient or relocate the receiving antenna.
- Increase the separation between the equipment and receiver.
- Connect the equipment into an outlet on a circuit different from that to which the receiver is connected.
- Consult the dealer or an experienced radio/TV technician for help.

To assure continued compliance, any changes or modifications not expressly approved by the party responsible for compliance could void the user's authority to operate this equipment. (Example – use only shielded interface cables when connecting computer or peripheral devices).

USA: - This device complies with Part 15 of the FCC Rules. Operation is subject to the following conditions: (1) this device may not cause harmful interference, and (2) this device must accept any interference received, including interference that may cause undesired operation of the device.

Canada: - Operation is subject to the following two conditions: (1) this device may not cause interference, and (2) this device must accept any interference, including interference that may cause undesired operation of the device.

To satisfy RF exposure requirements, this device and its antenna must operate with a separation distance of at least 20 centimeters form all persons and must not be co-located or operating in conjunction with any other antenna or transmitter.

Disposal and Recycling Information
When this product reaches its end of life, please dispose of it according to your local environmental laws and guidelines.

Battery Disposal Information
Dispose of batteries according to your local environmental laws and guidelines.

clamcase™ Quick Start Guide

Package Contents

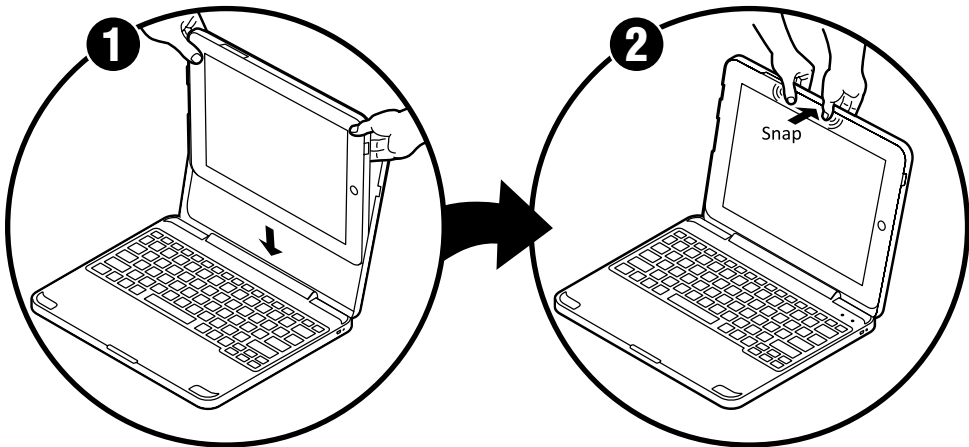
- CLAMCASE™
- USB Charging Cable
- Quick Start Guide

Setting Up Your CLAMCASE™

1. For optimal experience, CLAMCASE™ performs best with iOS 4.2 or later. Simply plug your iPad® device into your computer via USB and select update to iOS 4.2 or later software through iTunes® for the free updates.

Attaching Your iPad® to the CLAMCASE™

1. Slide the left side of the iPad® into the bottom edge of the recessed area.
2. Press the right side of the iPad® into the recess until it locks in place.

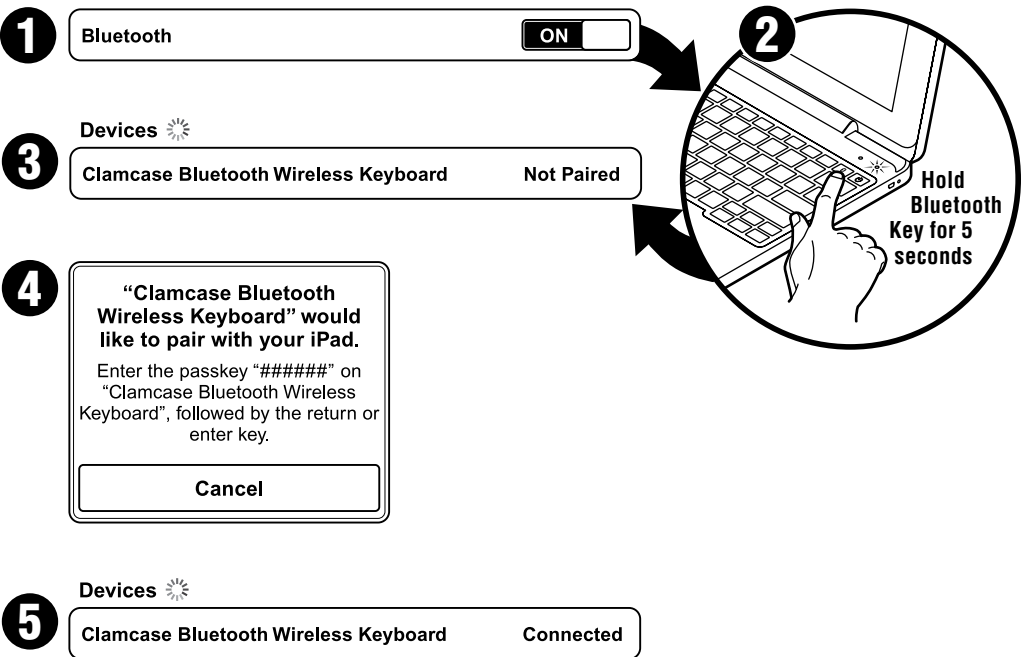


Pairing the CLAMCASE™ Keyboard with Your iPad®

1. On your iPad®, tap Settings > General > Bluetooth® and make sure Bluetooth® is ON.
2. On the CLAMCASE™ Keyboard, hold down the Bluetooth® button for five seconds. The Bluetooth® Indicator Light will flash.
3. CLAMCASE™ Keyboard appears on your iPad® screen. Tap CLAMCASE™ Keyboard to select the device.
4. Your iPad® screen displays a passkey. Enter the passkey on the CLAMCASE™ Keyboard and press Enter.
5. Your iPad® screen shows the CLAMCASE™ Keyboard as Connected.

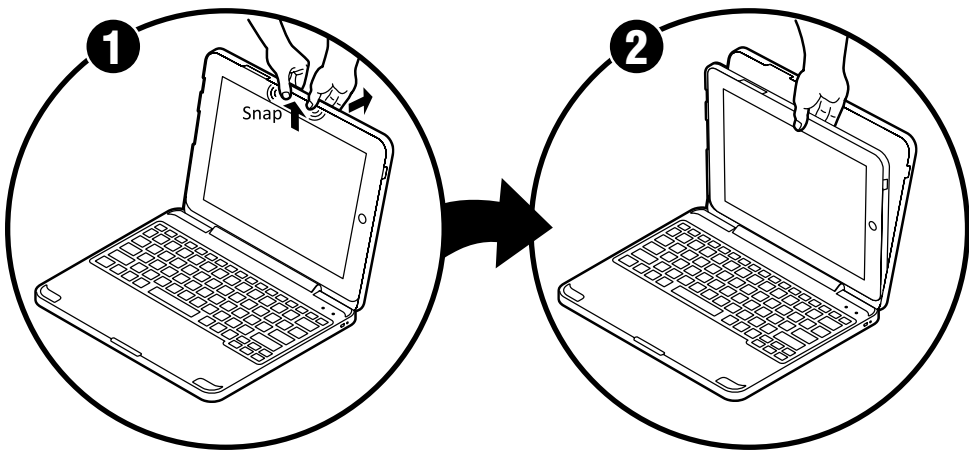
Once the CLAMCASE™ Keyboard and iPad® are paired, the devices remain connected, even if the CLAMCASE™ Keyboard or iPad® are turned off. Press and hold the Power key on the CLAMCASE™ for two seconds to turn off the CLAMCASE™ Keyboard and use the iPad® Keyboard. Press and hold the key again to use the CLAMCASE™ Keyboard.

Note: If you turn Bluetooth® off on the iPad®, follow the instructions above to reconnect the CLAMCASE™.



Removing Your iPad® from the CLAMCASE™



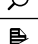
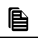




1. Lift up and push back on the top clip to “pop” the iPad® out.
2. Use two fingers to reach behind the iPad® and scoop it out of the CLAMCASE™.






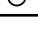
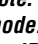



Using Your CLAMCASE™ Keyboard

Use your CLAMCASE™ Keyboard to type in any application in which you would normally use the iPad® Keyboard. Your CLAMCASE™ Keyboard also includes 14 function keys that are used to access commonly-used features.

Using the Special Keys

ICON	KEY	FUNCTION
	Home Key	Return the iPad® screen to the Home screen. On iOS 4.2 and above, double tap to reveal apps running in the background.
	Lock Key	Lock the iPad® and turn off the screen.
	Search Key	Display the Search screen.
	Cut Key	Cut selected text from the screen and place it on the clipboard.
	Copy Key	Copy selected text to the clipboard.
	Paste Key	Paste text from the clipboard to the screen.
	Slideshow Key	Display images saved on the iPad®.
	Keyboard Key	Display and hide the iPad® Keyboard.

ICON	KEY	FUNCTION
	Track Back Key	Go to the last song or video.
	Play/Pause Key	Play or pause the song or video.
	Track Forward Key	Go to the next song or video.
	Mute Key	Mute the speaker volume.
	Volume Down Key	Lower the speaker volume.
	Volume Up Key	Raise the speaker volume.
	Bluetooth® Key	Hold for 5 seconds to pair keyboard.
	Power Key	Hold for 2 seconds to turn CLAMCASE® Keyboard on and off.

Note: If the CLAMCASE® Keyboard is idle for 10 minutes, it goes into Power Save mode. Press any key to exit Power Save mode, and press again to reconnect to the iPad®. The Bluetooth® icon on the iPad® will flash indicating it is connected.