



ClamCase PRO



ClamCase PRO® Quick Start Guide

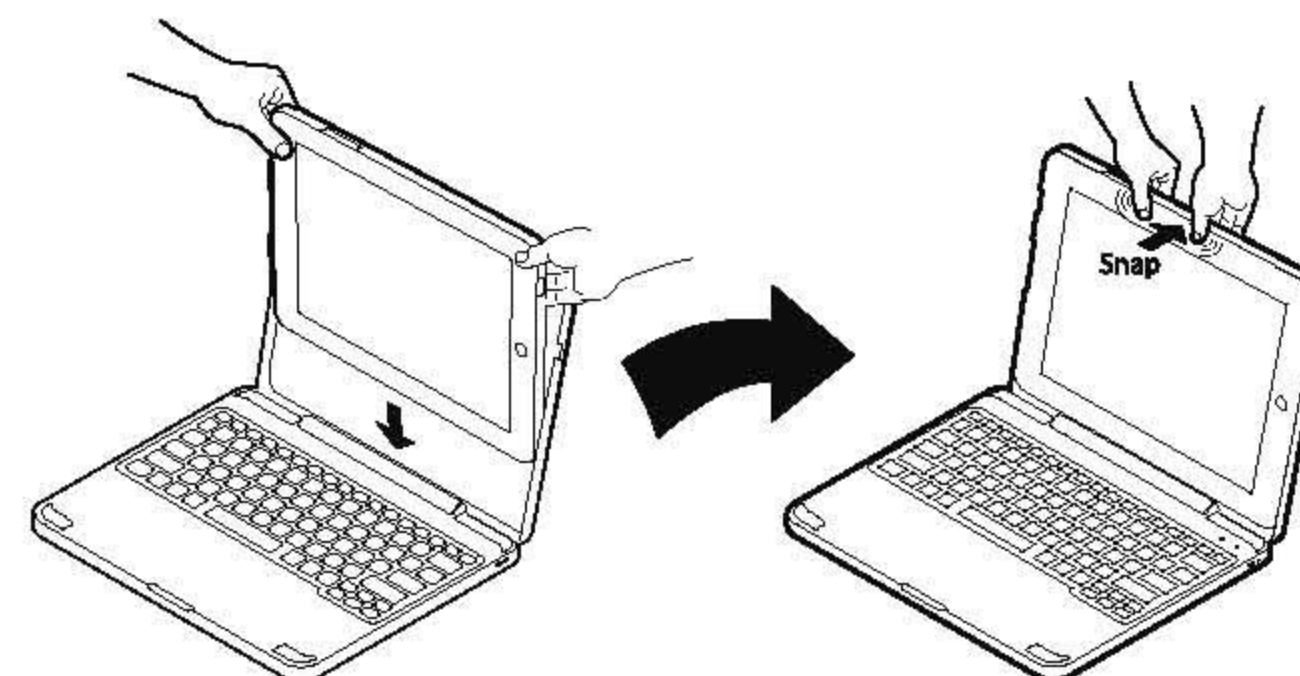
Setting Up Your ClamCase PRO®

Inserting the iPad

Place the iPad inside the bottom edge of the ClamCase. Press the top of the iPad into the top edge of the ClamCase and it will snap into place securely.

Removing the iPad

Lift up and push back on the top edge of the ClamCase lifting the lip over the iPad to (loosen or unsecure) it. Push the iPad from the reverse side forward, and remove the iPad from the ClamCase.



Pairing the ClamCase PRO® Keyboard with Your iPad®

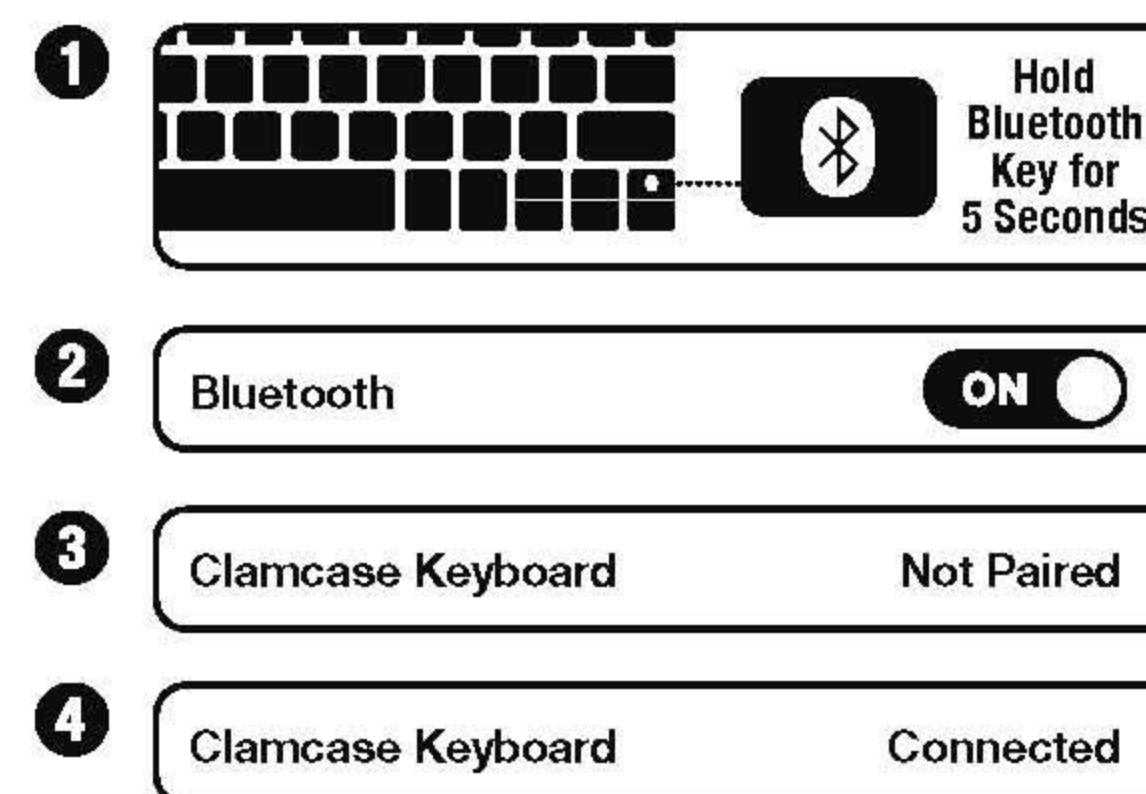
- 1 On the CLAMCASE® Keyboard, hold down the Bluetooth® button for five seconds. The Bluetooth® Light will flash.
- 2 On your iPad®, tap Settings > General > Bluetooth® (make sure Bluetooth® is ON)
- 3 CLAMCASE® Keyboard appears on your iPad® screen. Tap CLAMCASE® Keyboard to select the device.
- 4 Your iPad® screen shows the CLAMCASE® Keyboard as Connected.

****Please Note: Pairing process may differ on iOS 5 or earlier****

CHARGE & BATTERY CHECK

When charging the ClamCase, the green LED light will indicate a full charge (approximately 90 minutes). To check the battery life at anytime, press the Battery key and note the number of times the LED indicator light flashes.

Battery Check	
# of Flashes	Battery Life
● ● ● ● ●	75 - 100%
● ● ● ●	50 - 75 %
● ● ●	25 - 50 %
● ●	0 - 25 %



Function Keys

ICON	KEY	FUNCTION	ICON	KEY	FUNCTION
	Home	Return the iPad® screen to the Home screen.		Track Back	Go to the last song or video.
	Lock	Lock the iPad® and turn off the screen.		Play/Pause	Play or pause the song or video.
	Search	Display the Search screen.		Track Forward	Go to the next song or video.
	Cut	Cut selected text from the screen and place it on the clipboard.		Mute	Mute the speaker volume.
	Copy	Copy selected text to the clipboard.		Volume Down	Lower the speaker volume.
	Paste	Paste text from the clipboard to the screen.		Volume Up	Raise the speaker volume.
	Slideshow	Display images saved on the iPad®.		Bluetooth®	Hold for 5 seconds to pair keyboard.
	Keyboard	Display and hide the iPad® Keyboard.		Power	Hold for 2 seconds to turn CLAMCASE™ Keyboard on and off.

Troubleshooting

Reset Instructions

To reset your ClamCase®, place a paper-clip into the reset button and keep it pressed for 5 seconds. Remove the paper-clip and confirm the lights on your ClamCase flash. The flashing lights indicate that your unit has been reset. Please contact us for additional assistance.

Contact Info

customerservice@clamcase.com
800-939-0335
Hours : M-F 9AM-5PM EST
clamcase.com/support.html



FCC COMPLIANCE STATEMENT

The equipment has been tested and found to comply with limits for a Class B digital device, pursuant to Part 15 of the FCC Rules. These limits are designed to provide reasonable protection against harmful interference in a residential installation. This equipment generates, uses and can radiate radio frequency energy and, if not installed and used in accordance with instructions, may cause harmful interference to radio communications. However, there is no guarantee that interference will not occur in a particular installation. If this equipment does cause harmful interference to radio or television reception, which can be determined by tuning the equipment off and on, the user is encouraged to try to correct the interference by one or

more of the following measure:

- Reorient or relocate the receiving antenna.
- Increase the separation between the equipment and receiver.
- Connect the equipment into an outlet on a circuit different from that to which the receiver is connected.
- Consult the dealer or an experienced radio/TV technician for help.

To assure continued compliance, any changes or modifications not expressly approved by the party responsible for compliance could void the user's authority to operate this equipment. (Example - use only shielded interface cables when connecting computer or peripheral devices).

USA: This device complies with Part 15 of the FCC Rules. Operation is subject to the following conditions: (1) this device may not cause harmful interference, and (2) this device must accept any interference received, including interference that may cause undesired operation.

Canada: Operation is subject to the following two conditions: (1) this device may not cause interference, and (2) this device must accept any interference, including interference that may cause undesired operation of the device.

Disposal and Recycling Information

When this product reaches its end of life, please dispose of it according to your local environmental laws and guidelines.

Battery Disposal Information

Dispose of batteries according to your local environmental laws and guidelines.