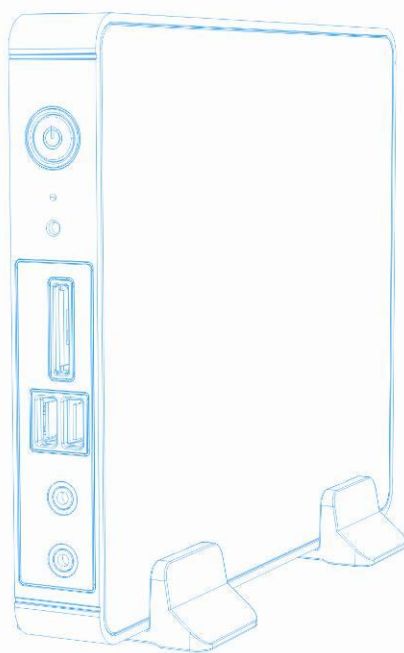


mini PC NB-01-HDMI

User's Manual



【Directory】

【SAFETY PRECAUTIONS】	1
ELECTRONIC WARNINGS	1
OPERATIONAL NOTICE	1
NOTICE FOR THE USA FCC PART 15	2
【IMPORTANT USAGE INFORMATION】	3
【POSITION LAYOUT】	4
【PRODUCT APPEARANCE INTRODUCTION】	5
FRONT PANEL	5
【PRODUCT APPEARANCE INTRODUCTION】	6
BACK PANEL	6
【PC PERIPHERALS CONNECTION】	7
DISPLAY SETUP	7
INPUT PERIPHERALS SETUP	7
LAN NETWORK CONNECTION	8
POWER SWITCH ON	8
【SYSTEM CONFIGURATION】	9
WIRELESS NETWORK SETUP	9
LAN SETUP	10
SETTING FIXED IP	10
AUTOMATIC IP ADDRESS	11
【SYSTEM RECOVERY】	13
【DRIVER INSTALLATION INSTRUCTIONS】	14

【Safety Precautions】

Electronic Warnings

To avoid electronic shock or damage, please disconnect chargers from power source

In case of power failure, please contact dealer or technical services for help and user must not try to fix the problem by self

Operational notice

Working temperature 35°C

Please read user manual and all product information carefully before use

Please make sure the power connect is correct before use. If significant product fault is found please do not hesitate to contact dealer.

Please keep the device away from dust as dust, wet and violent vibration may cause damage or shorten use life

Do not place the device at where unstable or vibrant

For any technical issues in use, please contact qualified or experienced technician

Notice for the USA FCC Part 15

This equipment has been tested and found to comply with the limits for a Class B digital device, pursuant to Part 15 of the FCC Rules.

These limits are designed to provide reasonable protection against harmful interference in a residential installation.

This equipment generates, uses and can radiate radio frequency energy. However, there is no guarantee that interference will not occur in a particular installation. If this equipment does cause harmful interference to radio or reception, which can be determined by turning the equipment off and on, the user is encouraged to try to correct the interference by one or more of the following measures:

- Reorient or relocate the receiving antenna.
- Increase the separation between the equipment and receiver.
- Connect the equipment into an outlet on a circuit different from that to which the receiver is connected.
- Consult the dealer or an experienced technician for help.

This device complies with part 15 of the FCC Rules. Operation is subject to the following two conditions:

- 1) This device may not cause harmful interference, and
- 2) This device must accept any interference received, including interference that may cause undesired operation.

CAUTION: 1) To comply with the limits of the Class B digital device, pursuant to Part 15 of the FCC Rules, this device is comply with Class B limits. All peripherals must be shielded and grounded. Operation with non-certified peripherals or non-shielded cables may results in interference to radio or reception.

2) To satisfy FCC RF exposure requirements for mobile transmitting devices, a separation disatance of 20 cm or more should be maintained between the antenna of this device and persons during operation. To ensure compliance, operations at closer than this distance is not recommended. The antenna used for this transmitter must not be co-located in conjunction with any other antenna or transmitter.

MODIFICATION: Any changes or modifications not expressly approved by the grantee of this device could void the user's authority to operate the device.

【Important Usage Information】

- in order to avoid system damage or body hurt, Please read the instruction and notice carefully before use.
- Please check the device and all its accessories before first use, if any product fault is found please contact dealer for replacement as soon as possible.
- Please keep the device away from dust, heat and direct solar radiation
- Please keep the use environment dry. Water, moisture or mineral liquid may cause erodent damage.
- When using the device, please make sure the surroundings scatter heat radiation effectively.
- Please check though connection to every accessory is correct before power on.
- In order to avoid short circuit and fault connections, please keep the device and output connectors away from paper scrap, screw or any small object.
- In order to avoid short circuit and circuit damage, please DO NOT insert anything to the device
- After power on and system start, a few cooling fins or IC may heat up.
- Please Do Not touch them and check if it is fail to scatter heat radiation.
- Please shut down the device before connecting or removing peripheral parts and products.
- Please note that factory warranty will be invalid once it is opened and disassembled.

• excessive sound pressure from earphones and headphones can cause hearing loss.

• the socket-outlet shall be installed near the equipment and shall be easily accessible.

• CAUTION

RISK OF EXPLOSION IF BATTERY IS REPLACED BY AN INCORRECT TYPE.

DISPOSE OF USED BATTERIES ACCORDING TO THE INSTRUCTIONS

【Packing List】

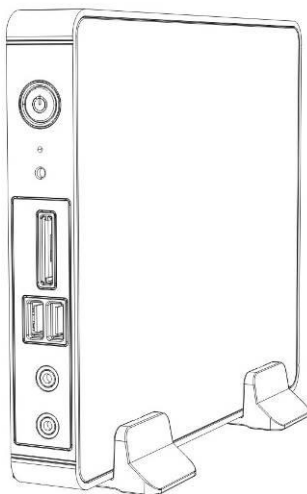
Thanks you for your choice.

Please check the following parts in the box, please contact dealer if there is any accessory is missing.

Stander -----1
User 's Manual -----1
Power Adaptor -----1
Audio -----1
Wirless network antenna -----1(optional)
Driver CD -----1

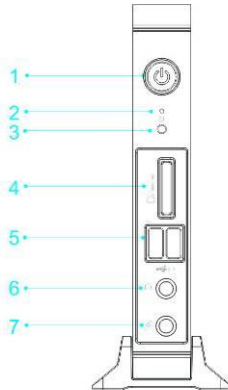
【Position Layout】

Please use the stander to place NB-01-HDMI as below position.



【Product Appearance Introduction】

Front Panel



1. Power ON/OFF

Push power on/off button to start or shut down NB-01-HDMI

2. Hard Drive Indicator

The indicator will flame when the hard drive is working.

3. Infrared receiver

Infrared reception for the remote control.

4. Flash Memory Slot

The flash memory slot support SD/MMC/MS memory cards that widely used in digital camera, MP3 player, cell phone, PDA etc.

5.USB

Support USB2.0 or USB1.1 peripheral parts and hardware such as keyboard, Mouse, camera and external hard drive. The usb support plug and play and up to 12Mb/s data transfer.

6. Headphone slot

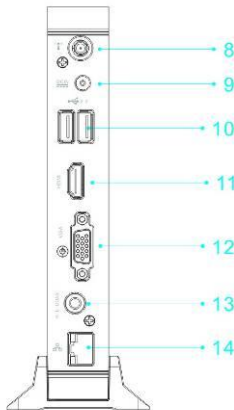
Support stereo headphone or speakers

7. Mic

Support microphone, voice narrations and sound recording.

【Product Appearance Introduction】

Back Panel



8. Wireless Network Antenna Connector

Connect to wireless network antenna for better signal reception

9. Power DC 12V

Connect to power adaptor and give power supply

10.USB

Same as No.5

11.HDMI

Support HDMI1.3 high definition video output. It can connect to display device that has HDMI1.3 interface.

12.VGA

Support VGA monitor and VGA displayer such as screen projector

13. SPDIF Output

Support stereo audio and digital audio output

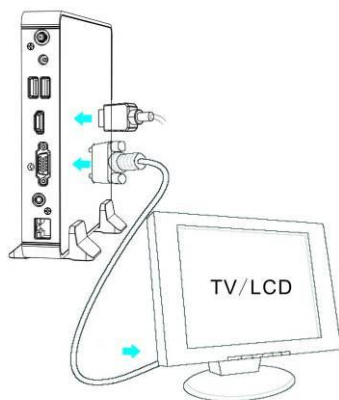
14. LAN

Standard RJ-45 Ethernet interface for LAN network connection

【PC peripherals Connection】

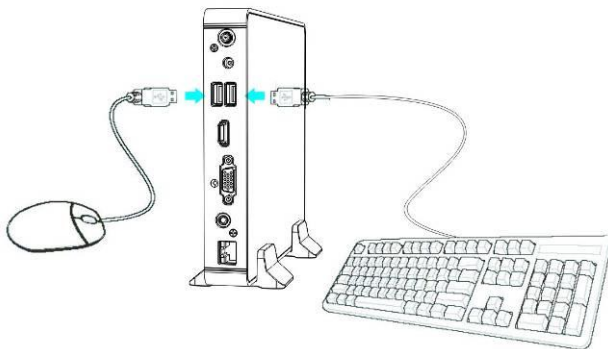
Display Setup

Connect monitor or displayer to NB-01-HDMI by HDMI or VGA cable.



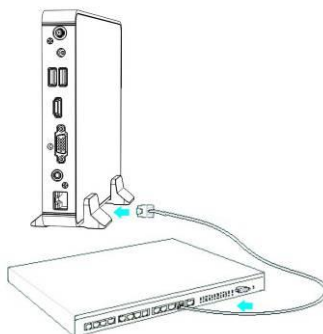
Input Peripherals Setup

Connect keyboard, mouse or printer to NB-01-HDM through USB interface.



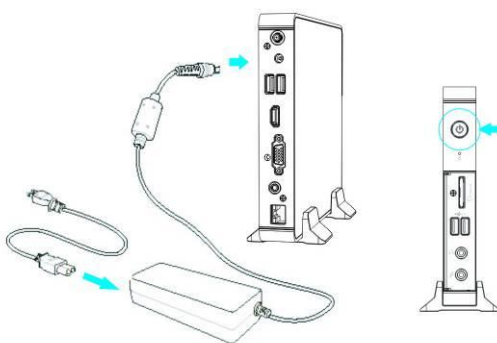
LAN Network Connection

Connect router or hub to NB-01-HDMI by RJ-45 Cable.



Power Switch On

Connect power adapter to the console and press the power button



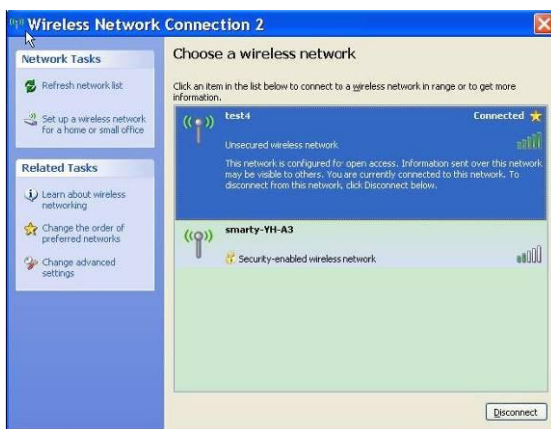
【System Configuration】

Wireless Network Setup

【Remark】 : please make sure the WIFI antenna is connected before network setup.

1: Right click on Network Connection in Windows XP and search WIFI signal.
Select a network from the available network list.

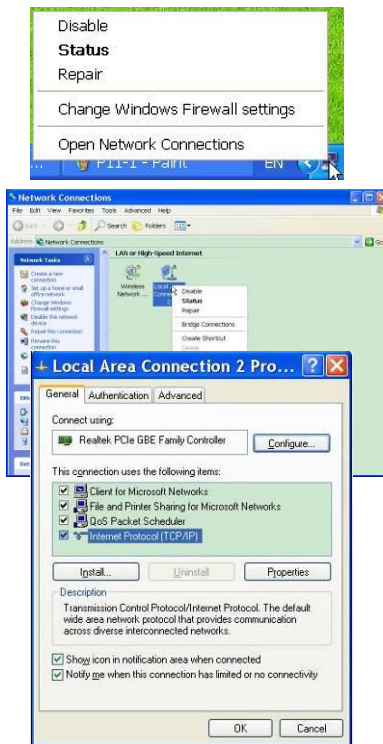
【Remark】 : you may need to enter password for accessing a network if the network is secured.



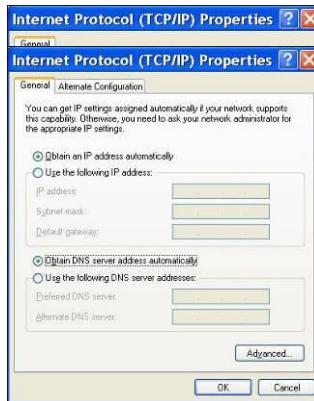
LAN Setup

Setting fixed IP

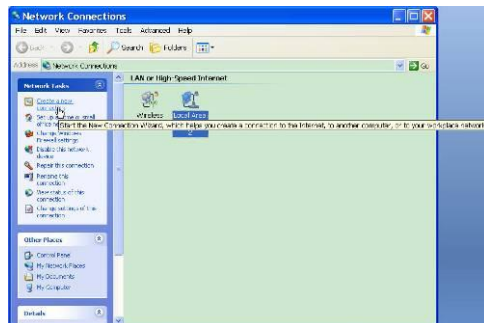
- 1: Right click on the Local Network Sign and open the Network Connection
- 2: Choose attribute after right click on Local Network.



- 3: Click on Internet prototype(TCP/IP) and click Attribute
- 4: Select “Using fixed IP” and enter the given IP, Sub mask and Default Gateway, click OK when finish entering IP. In most cases there is no need to fill in DNS information. If you do not have the IP address information, please contact network administrator.



- 2: Select Obtain an IP address automatically and click on Finish
- 3: Click on Create a new connection to activate network connect wizard.



4: Click Next.



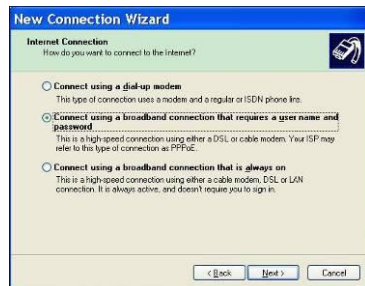
5: Select Connect to Internet then click Next.



6: Select Setup Internet Connection Manually.



7: Select a way of connecting and click Next.



8: Enter your ISP name and click Next.



9: Enter network User name and Password and Click Next.



10: Click on Finish to end the network setup.

11: After entering User name and Password, click on Connect to activate the internet connection.



【Remark】 If there is a network problem, please contact your network service provider.

【System Recovery】

There are operation system, software driver and default application activate list file in a hidden partition in harddisk that will help you to recover your system and reset system as default setting. Please note that you may need to back up part of current system information such as Outlook PST or important data before system recovery.

【Remark】: Please DO NOT delete RECOVERY partition and you will not be able to use system recovery function.

1: For entering BIOS setup, press “F8” while system is starting

- 2: Press "Enter" and select "Windows Setup [EMS Enabled]"
- 3: Enter the system recovery dialog
- 4: Choose a target disk and partition, then click Next.
 - 4.1 Partition option: Recover Windows to a partition
 - 4.2 Partition:
 - A: Select a partition that is more than 20GB
 - B: System recovery will process in a harddisk partition, please select other partition.
- 5: Please follow above illustration to finish system recovery
- 6: When system recovery is finish, please restart the console.
- 7: Please finish setup for time, language, time zone, computer name and user name for your console before using the Windows operation system.

【Driver installation instructions】

This product driver installation CD for Windows XP Professional / Home simplified Chinese version of drivers and utilities installation.

The default partition for the driver to place **【G:】**

【Notes】 1. Make sure all the drivers installed before installing Service Pack2 (Windows XP) or Updated Microsoft Service Pack3 (Windows XP).

2. If you are prompted to restart the installation process, be sure to follow the prompts.

3. In the pre-install the drivers and utilities, please make sure you are administrator privileges to run

4. Windows XP. If it is not the system administrator privileges to log on Windows XP, security Problems may occur when loading.

1. Chipset drivers installed

Please follow these steps to install the chipset driver

1. Run G: \ Drivers \ VIA_INF_V310A \ Setup.exe
2. Click **【Next】** be installed, check the VIA Chipsets option, then click **【Next】** to continue Installation, until the completion of Click **【Complete】** .
3. Restart your computer.

2. Install graphics card driver

Please follow these steps to install the graphics card driver

1. Run G: \ Drivers \ VIAsetup_2001R \ Setup.exe
2. Click **【Next】** is installed, continue to click **【yes】** yes to restart your computer to complete the installation.
3. To install the sound card driver

Please follow these steps to install the sound card driver

1. Run G: \ Drivers \ Audio \ Setup.exe
2. Click **【Next】** be installed, check the VIA HD Audio option, then click Next to continue the installation until you click the **【Complete】** to complete.

4. Install remote control drivers

Please follow these steps to install the remote control driver

1. Run G: \ Drivers \ ITECIR Driver V5102_XP \ Setup.exe
2. Click **【Next】** be installed and continue to click **【Next】** , until the completion of Click **【Complete】**

5. Install Wireless Network Card Driver

Please follow these steps to install the wireless card driver

1. Run G: \ Drivers \ WLAN \ Setup.exe
2. Click **【Next】** be installed and continue to click **【Next】** installation, until the completion of Click **【Complete】** .

6. Install Media Center

Please follow these steps to install the Media Center

1. Run G: \ Drivers \ PPS video \ setup.exe
2. Click **【Next】** , select the installation path Click **【Next】** , to continue Click **【Next】** , until the completion of Click **【Complete】** .
3. Run G: \ Drivers \ iMCE Media Center main program \ setup.exe
4. Click **【yes】** , to choose the installation path Click **【Next】** , to continue Click **【Next】** , until the completion of Click **【Complete】** .
5. Run G: \ Drivers \ iMCE decoder \ Code_setup.exe
6. Select the installation path Click **【Next】** until you click the **【Close】** , to complete the installation

