

Shenzhen Inecan Electronic Co., Ltd.
54A, Puxia Road, Liuyue Village, Henggang Town,
Longgang District, Shenzhen

Sep. 16, 2010

Responses to inquiry for the Wireless Headset (FCC ID:
YSWSH921)

1) How does this device operate?

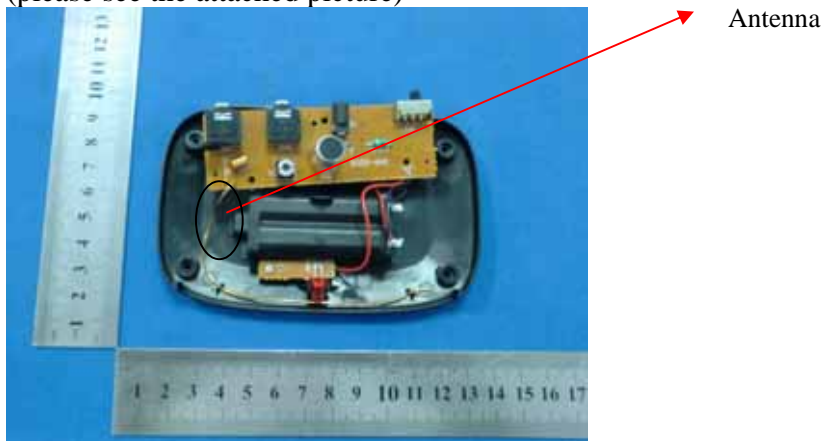
The device is operated as 88.656MHZ Wireless Headset and
plug in 2 AAA 1.5V batteries.

It transmit the audio signal from a external audio source such as
MP3 player by a Wireless Headset tuned on 88.656MHz and
the audio signal can be received by a common FM
Broadcasting Radio which is tuned to the same
transmitted frequency of the Wireless Headset and regenerate
the transmitted
signal through the FM Broadcasting Radio.

2) Provide information on the device and its antenna.

The antenna is a dipole antenna .

(please see the attached picture)



3) How is it installed?

It is very easy to install. It is powered by 3VDC plug in 2 AAA 1.5V batteries.

4) What test procedure was used?

ANCI C63.4:2003

Shenzhen Inecan Electronic Co., Ltd.

54A, Puxia Road, Liuyue Village, Henggang Town, Longgang District, Shenzhen

TEL : 86 755-28505178 FAX: 86 755-28503989

5) Was the tuning range properly verified? The test lab should indicate in the report that the tuning controls were manually adjusted to verify maximum tuning range.

88.656MHz

6) Was the bandwidth properly tested with maximum audio input? The test lab should describe the audio input signal (use a typical audio file from a typical device) -

DO NOT use 1kHz tone from signal generator as specified under ETSI EN 301 357-1) The maximum output Level of the typical device, mp3 player is used.

7) Provide the test report

Provided