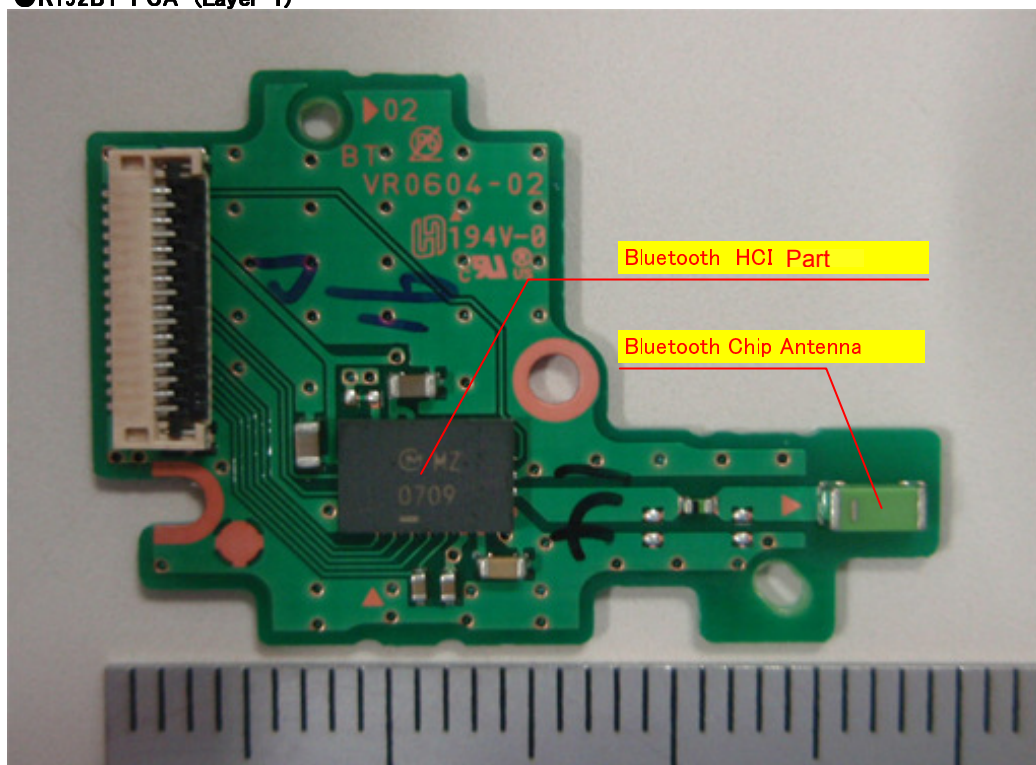


Size of PCB (R192BT-PCA): 29.3mm*20.4mm
As for this board , the shield is not installed.

●R192BT-PCA (Layer-1)



●R192BT-PCA (Layer-2)

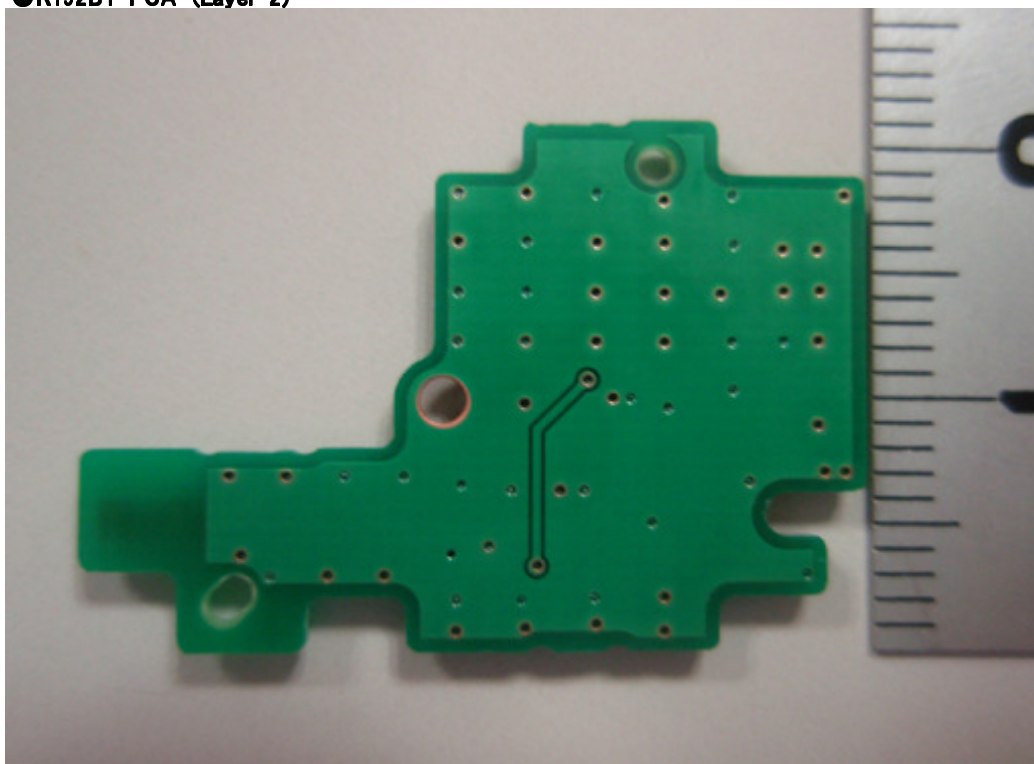


Fig.1 It set it in the camera.

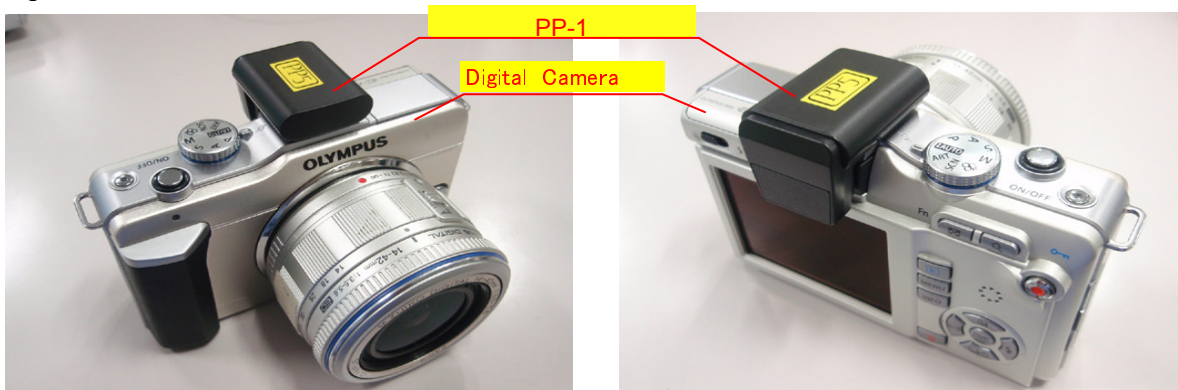


Fig.2 The interface is secured with this Dedicated multi-connector

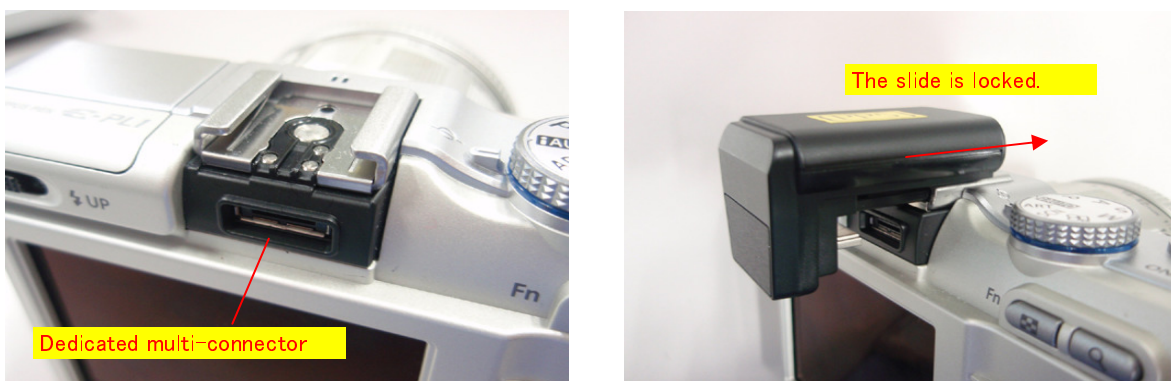


Fig.3 Internal layout

