

Technical Documentation

Internal Photos SpiderView



FCC ID:
IC:

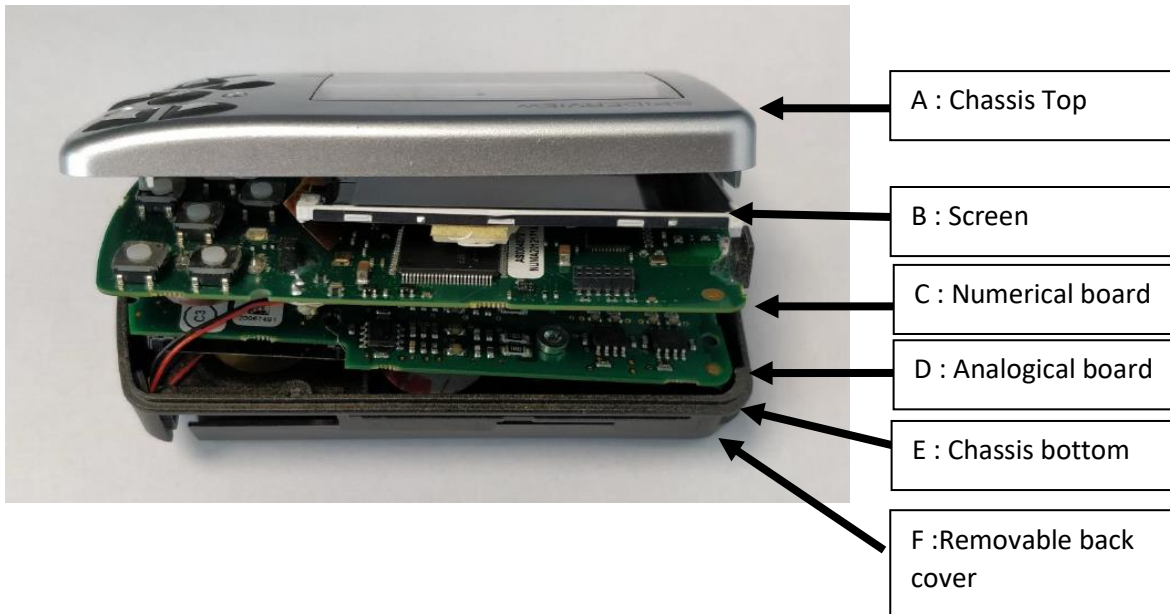
YSGLA456
10270A-LA456

Publication History

Version	Date	Modification description
3	December 22, 2021	Updated label UA10671 to add device reference (Chassis bottom-E)

Technical Documentation

Internal Photos



Stack Construction / Component placement

Technical Documentation

Internal Photos



A: Chassis Top (photos of both faces)

Technical Documentation

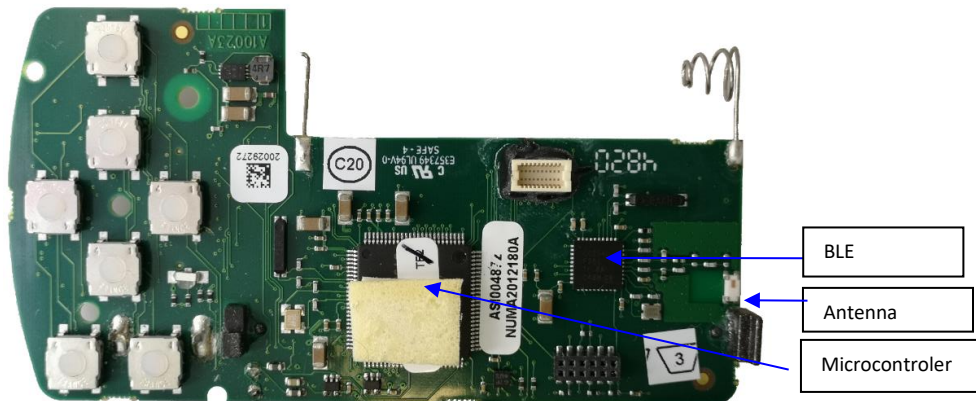
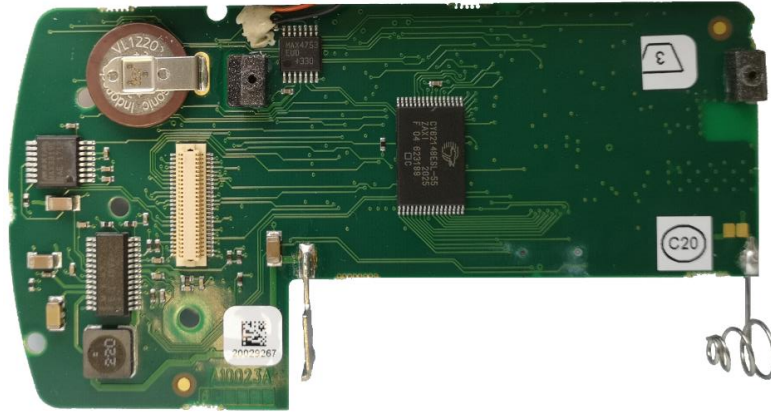
Internal Photos



B: Screen (photo of both faces)

Technical Documentation

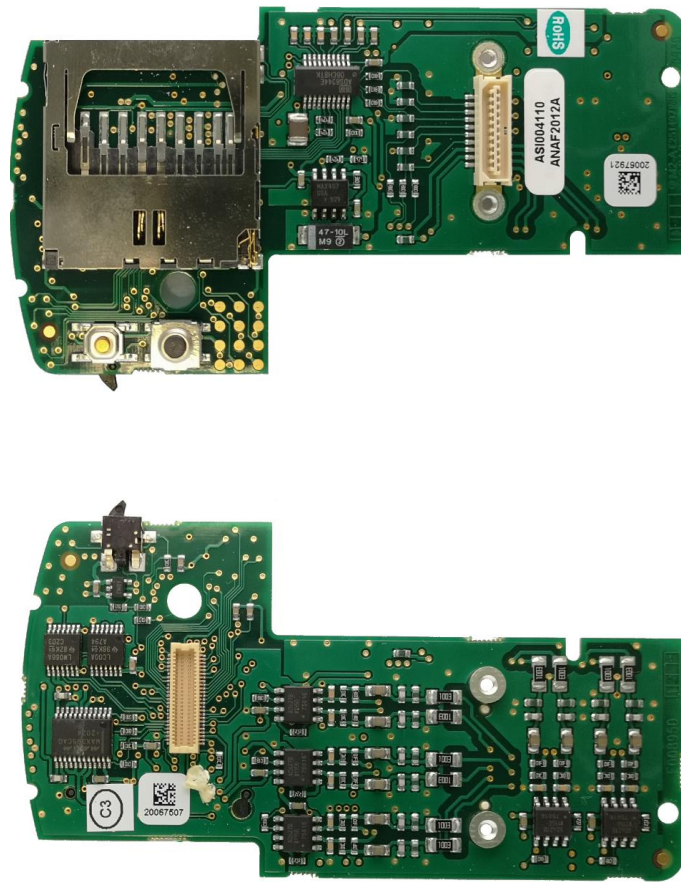
Internal Photos



C: Electronic Board - Numerical Board (photos of both faces)

Technical Documentation

Internal Photos



D: Electronic Board - Board Analogic (photo of both faces)

Technical Documentation

Internal Photos



CE SpiderView
0459 REF LA456T SP UDI:
(01) 08031527020136(21)SJYYMMNNA
UA10696B
MicroPort CRM S.r.l.
Via Crescentino s.n.
13040 Saluggia (VC) - Italy

REF LA456T FCC ID: YSGLA456
UA10671B IC: 10270A-LA456
R 207-991029

Cable connector

E : Chassis Bottom (photo of both faces)

Technical Documentation

Internal Photos



F: Removable back cover (photo of both faces)