

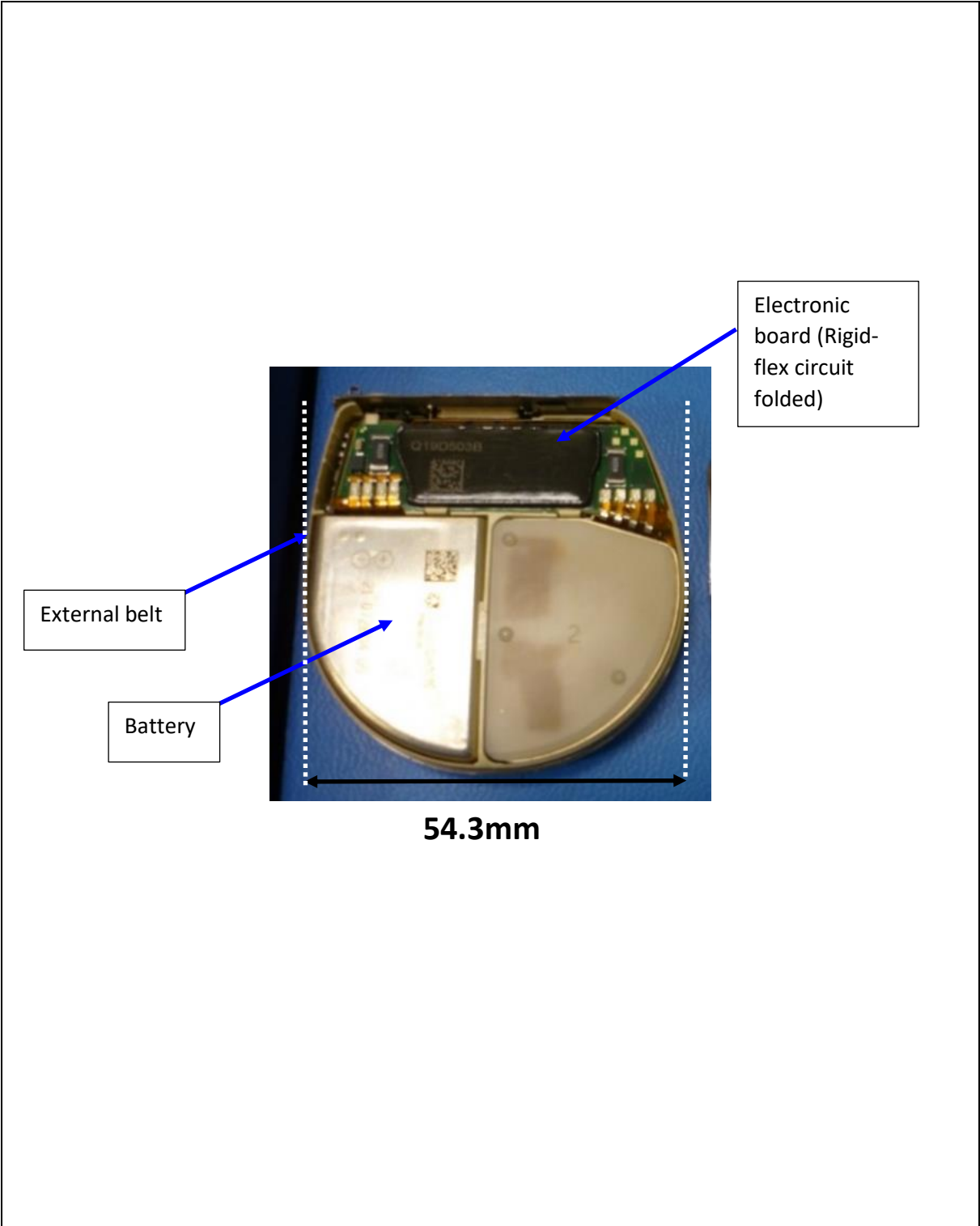
	<b>Technical Documentation</b>
--	--------------------------------

<b>Internal Photos</b>
------------------------

**Publication History**

Version	Date	Modification description
03	July 2, 2024	Add view of BLE Antenna

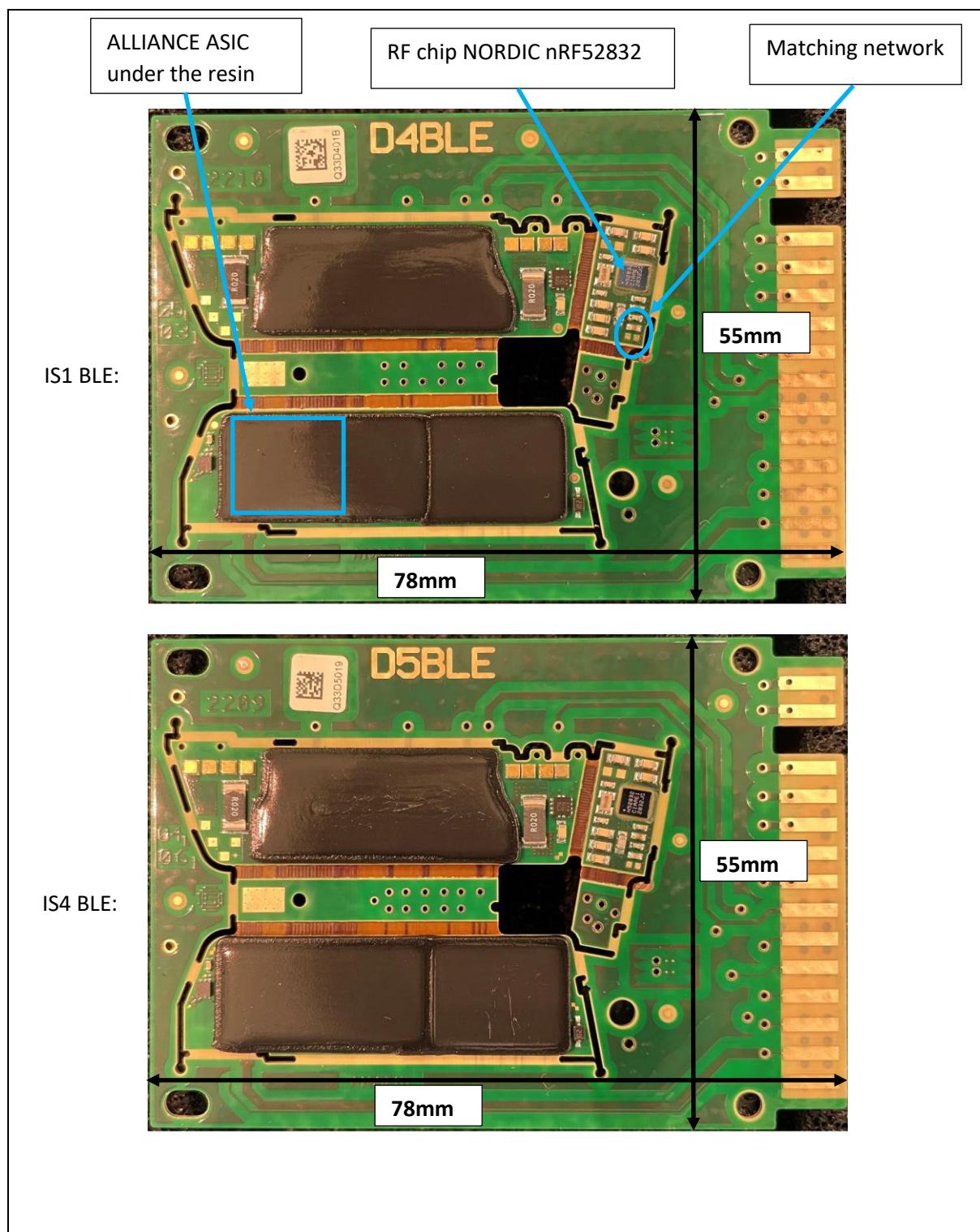
	<b>Technical Documentation</b>
	<b>Internal Photos</b>



Device Open View (this picture is representative for the 10 models)

# Technical Documentation

## Internal Photos



Electronic Board with its technical frame (IS1 BLE and IS4 BLE) - Top side

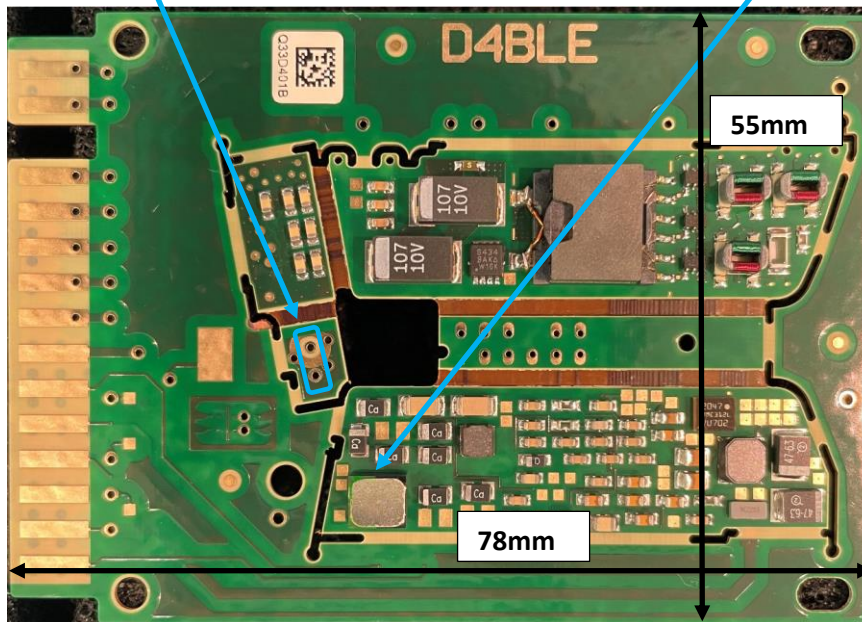
# Technical Documentation

## Internal Photos

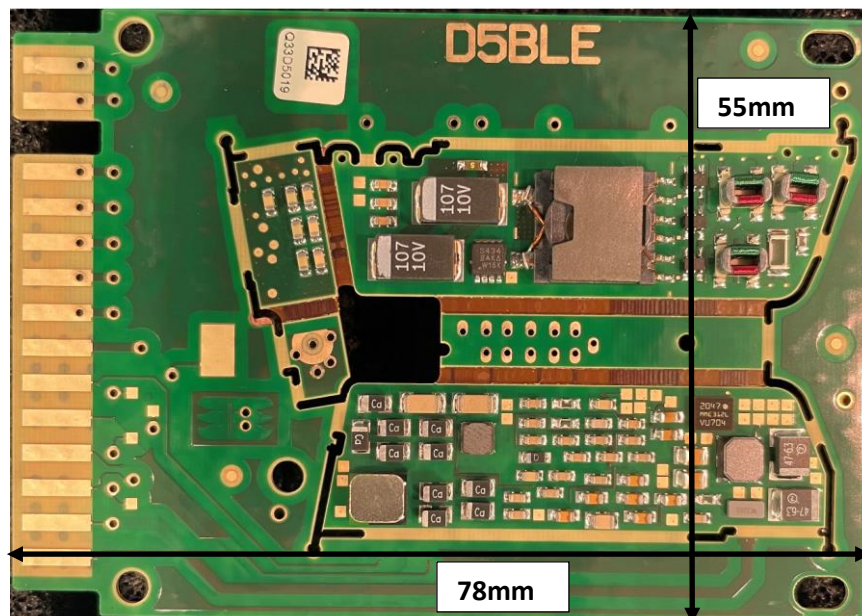
Footprints for the BLE feedthrough (BLE Antenna is connected to the BLE feedthrough, refer to page 8 for details)

Telemetry coil

IS1 BLE:



IS4 BLE:



Electronic Board with its technical frame (IS1 BLE and IS4 BLE) – Bottom side

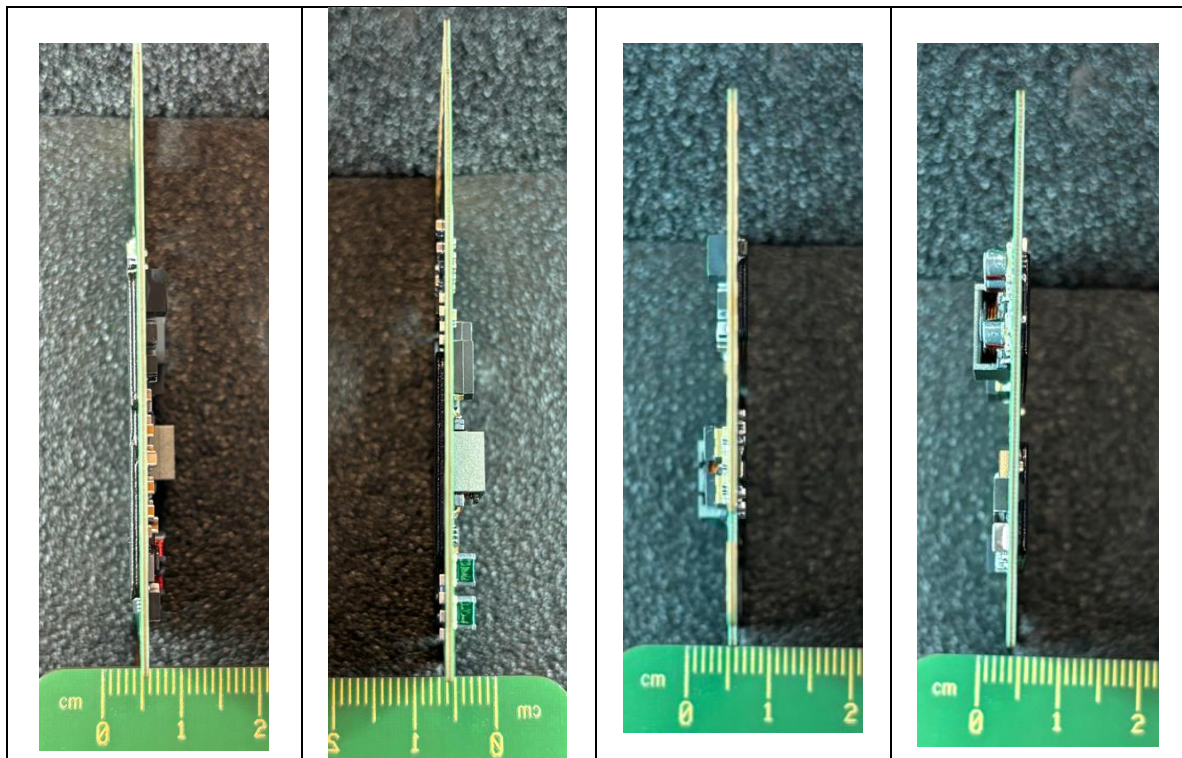


# Technical Documentation

## Internal Photos

View of IS4 BLE with ruler nearby:

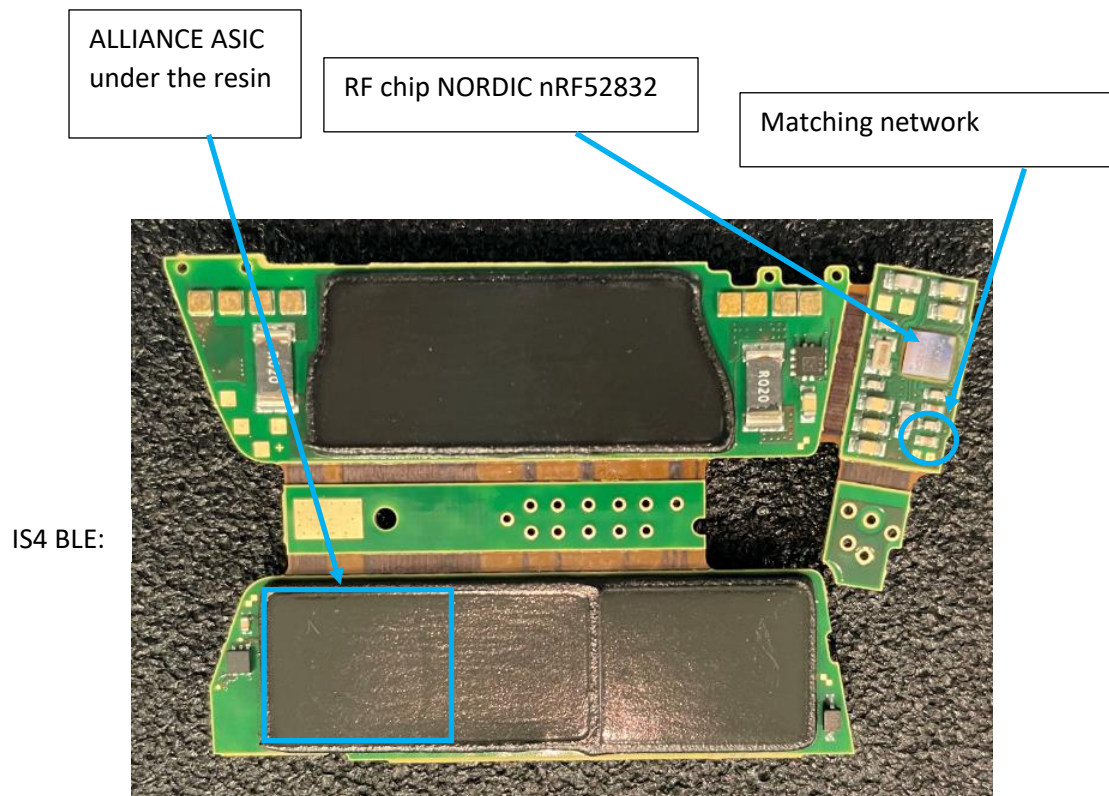
(Note: same thickness for IS1 BLE)



Electronic Board with its technical frame (IS4 BLE) – View of the thickness on 4 sides

# Technical Documentation

## Internal Photos

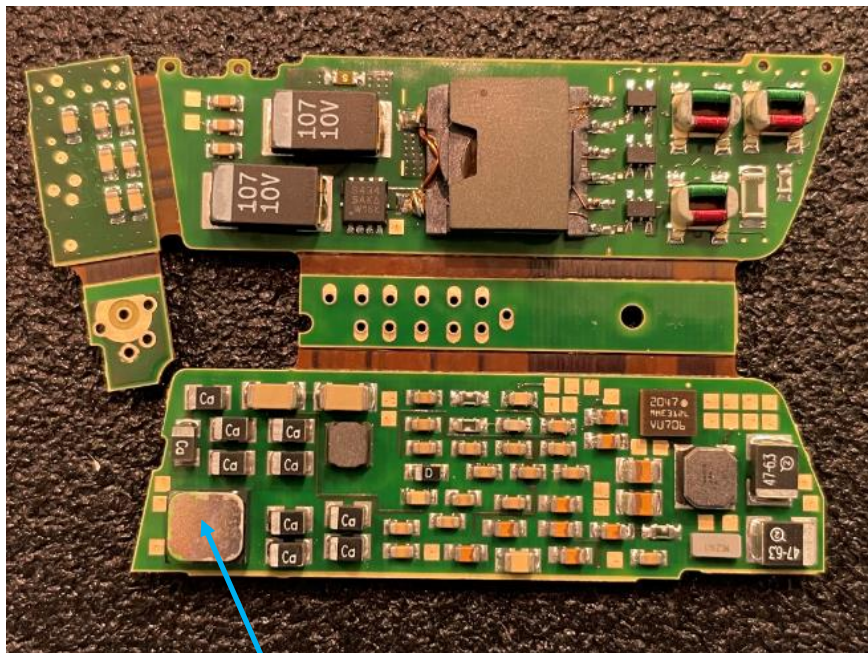


Electronic Board without the technical edge (example of IS4 BLE) - Top side

# Technical Documentation

## Internal Photos

IS4 BLE:



Telemetry coil

Electronic Board without the technical edge (example of IS4 BLE) - Bottom side

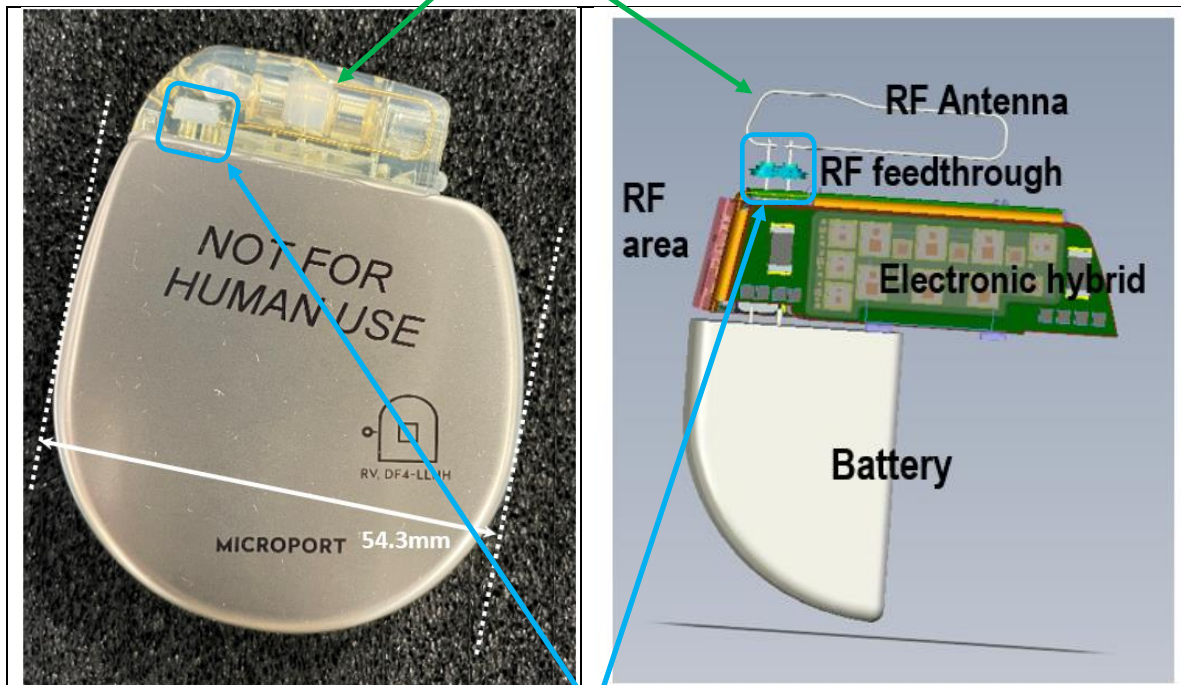
# Technical Documentation

## Internal Photos

BLE Antenna in the header (BLE Antenna is also named RF Antenna is the figure below).

Note1: Header cannot be opened.

Note2: Internal view of the titanium case is available in page2 of this document.



BLE Feedthrough (also named RF feedthrough is the figure above)

Note: "NOT FOR HUMAN USE" is only marked on non-implanted devices used for V&V. For implantable devices, "NOT FOR HUMAN USE" will not be marked.

View of BLE Antenna (example of IS1 BLE – VR 3240)