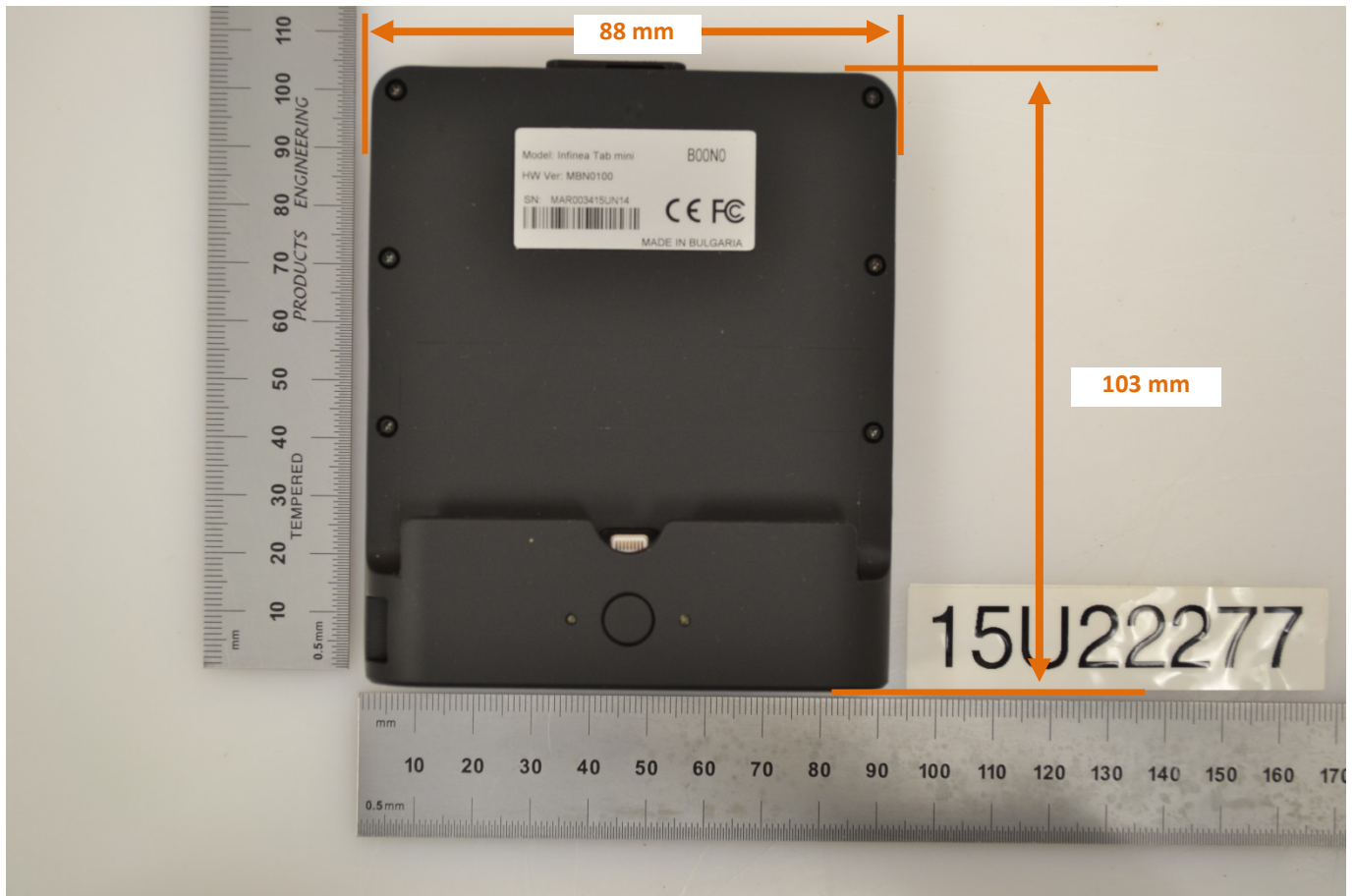


## DUT and SAR Set-up Photos

### Overall Dimensions

DUT



DUT with Host





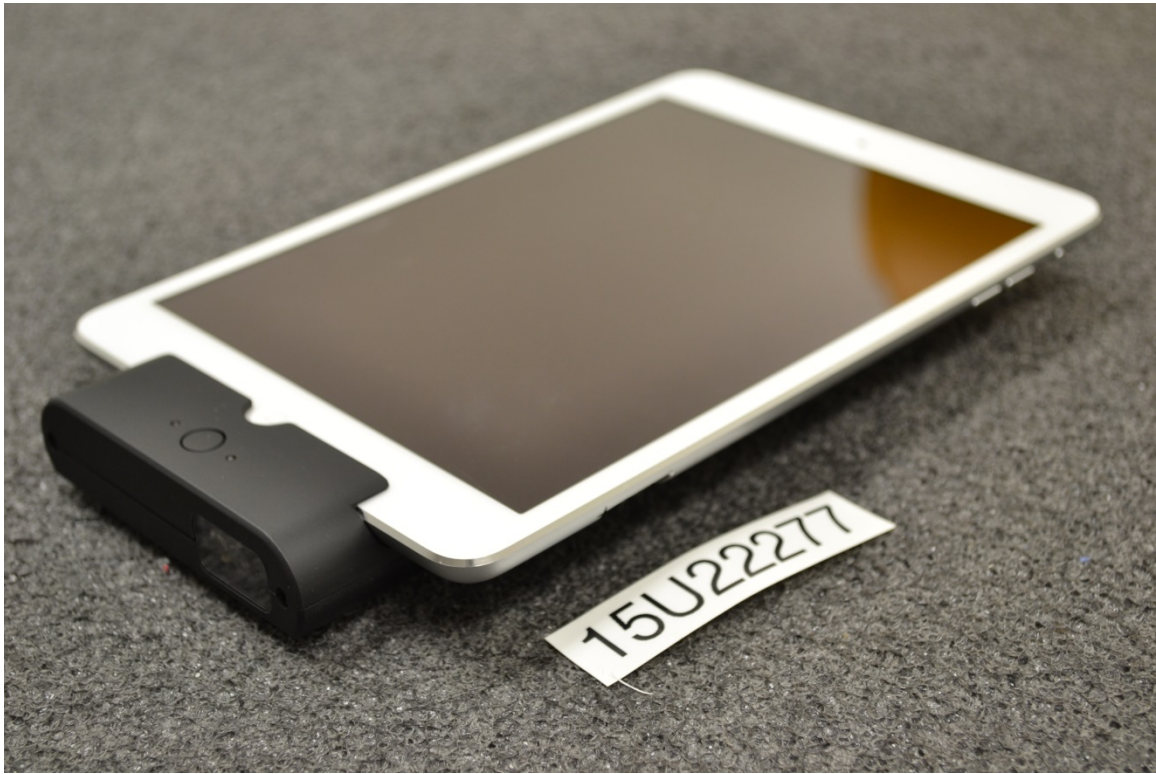
Front View of the DUT



Rear View of the DUT



Front View of the DUT with Host



Rear View of the DUT with Host





## Setup Photos

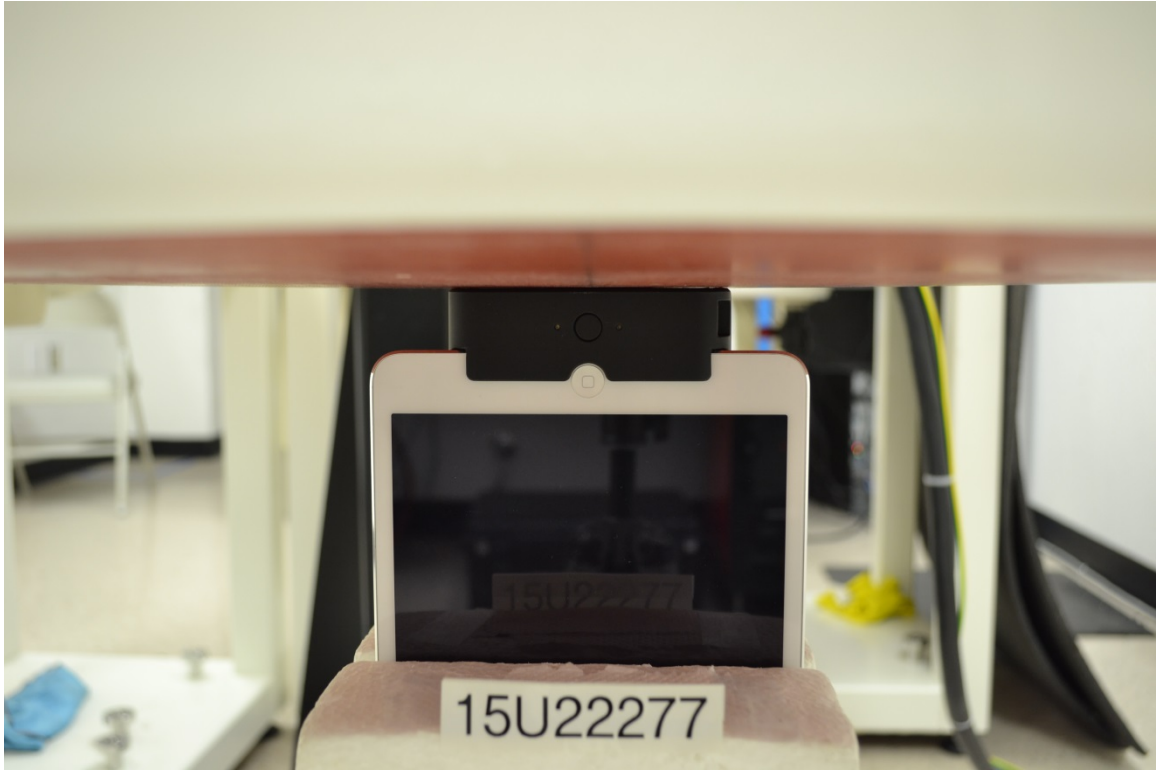
Handset Vertical and Horizontal Reference Lines

Vertical  
Center Line



## Body-worn Accessory & Hotspot mode Exposure Conditions

Edge 3 (0 mm distance)



# Antenna Dimensions & Separation Distances

(From the rear of the DUT)

