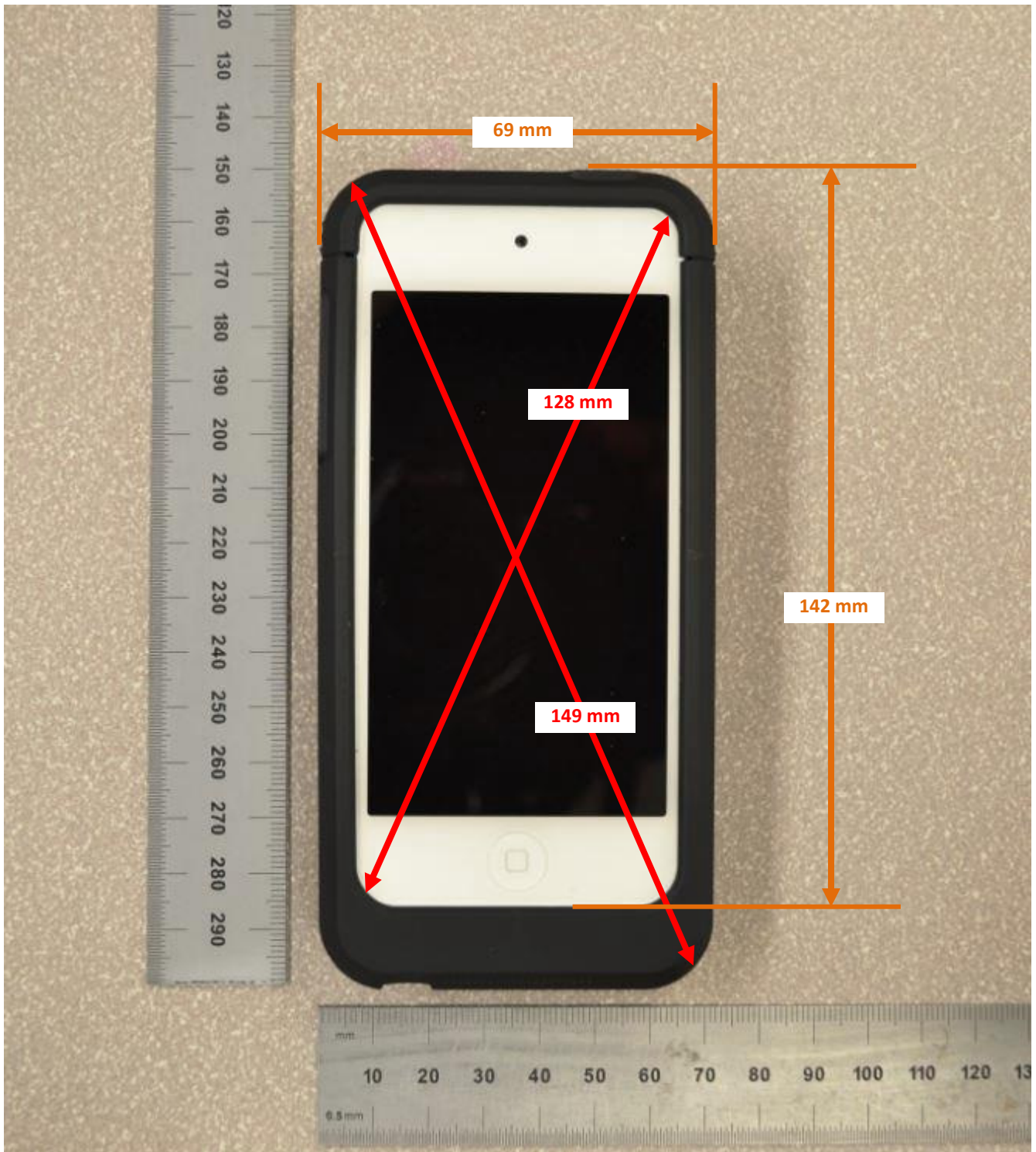


DUT and SAR Set-up Photos

Overall Dimensions



Front View of the DUT



Rear View of the DUT



Setup Photos

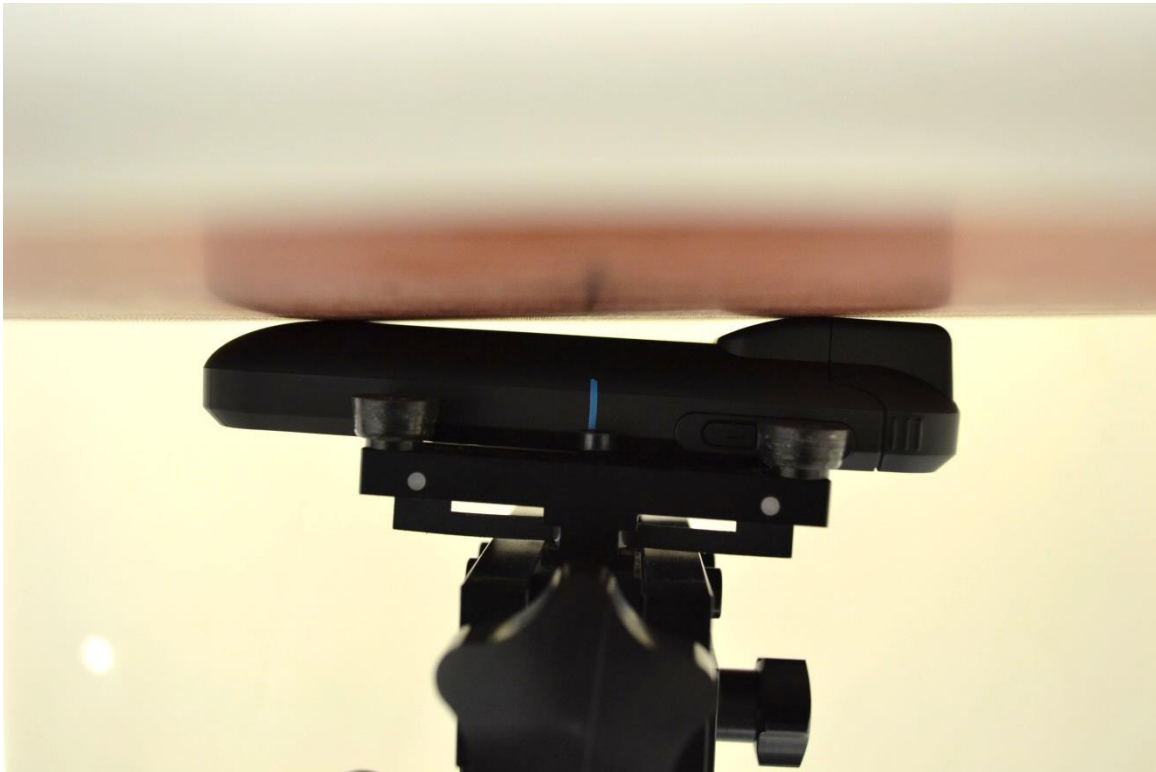
Handset Vertical and Horizontal Reference Lines

Vertical
Center Line

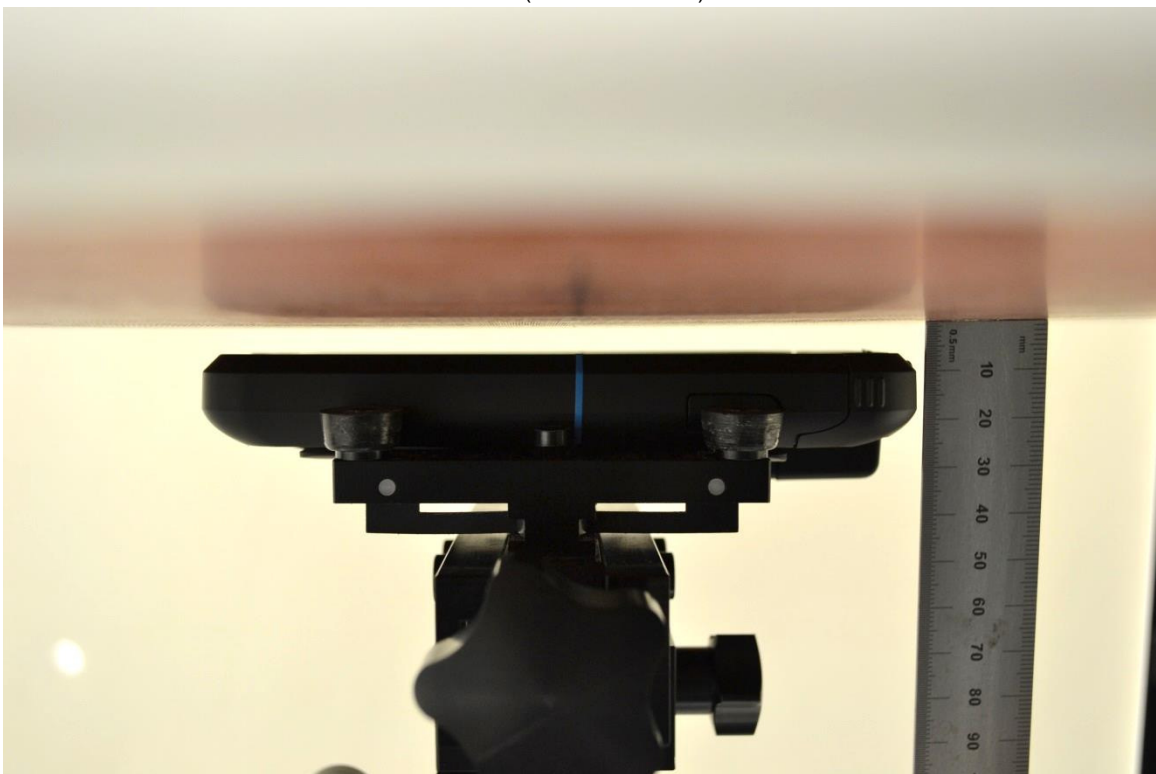


Body-worn Accessory & Hotspot mode Exposure Conditions

Rear (0 mm distance)

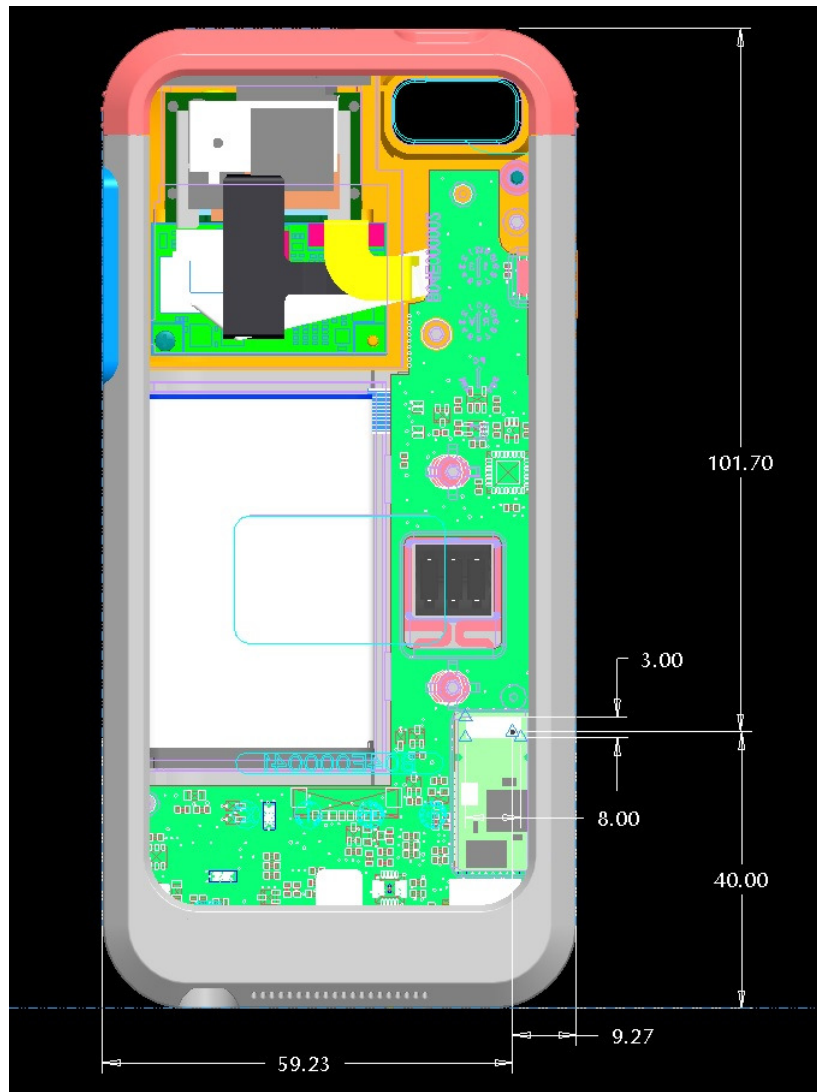


Front (5mm distance)



Antenna Dimensions & Separation Distances

Edge 4
(Left)



Edge 2
(Right)