

7.11 Test Setup (Photographs)**7.11.1 AC Powerline Conducted Emission****7.11.1.1 Host :Linea Pro 5.0**

– Front View –



– Side View –

Photograph present configuration with maximum emission

7.11.1.2 Host :Infinea TAB 4.0

– Front View –



– Side View –

Photograph present configuration with maximum emission

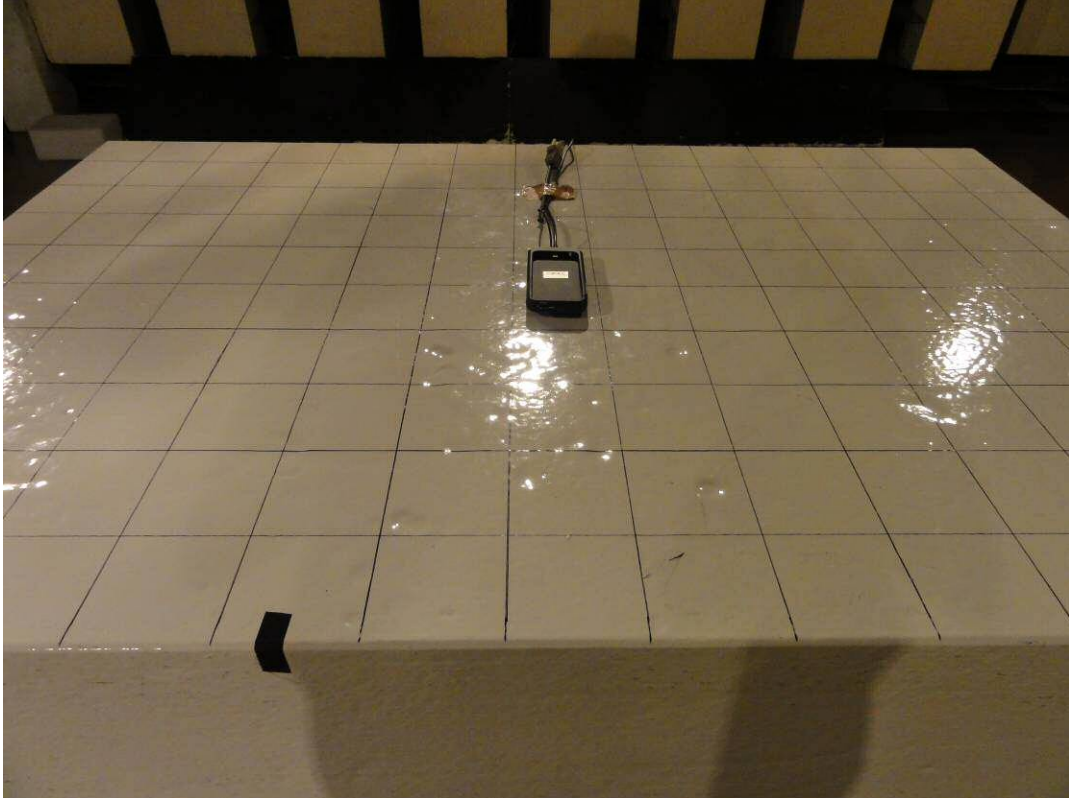
7.11.1.3 Host :Infinea TAB mini

– Front View –



– Side View –

Photograph present configuration with maximum emission

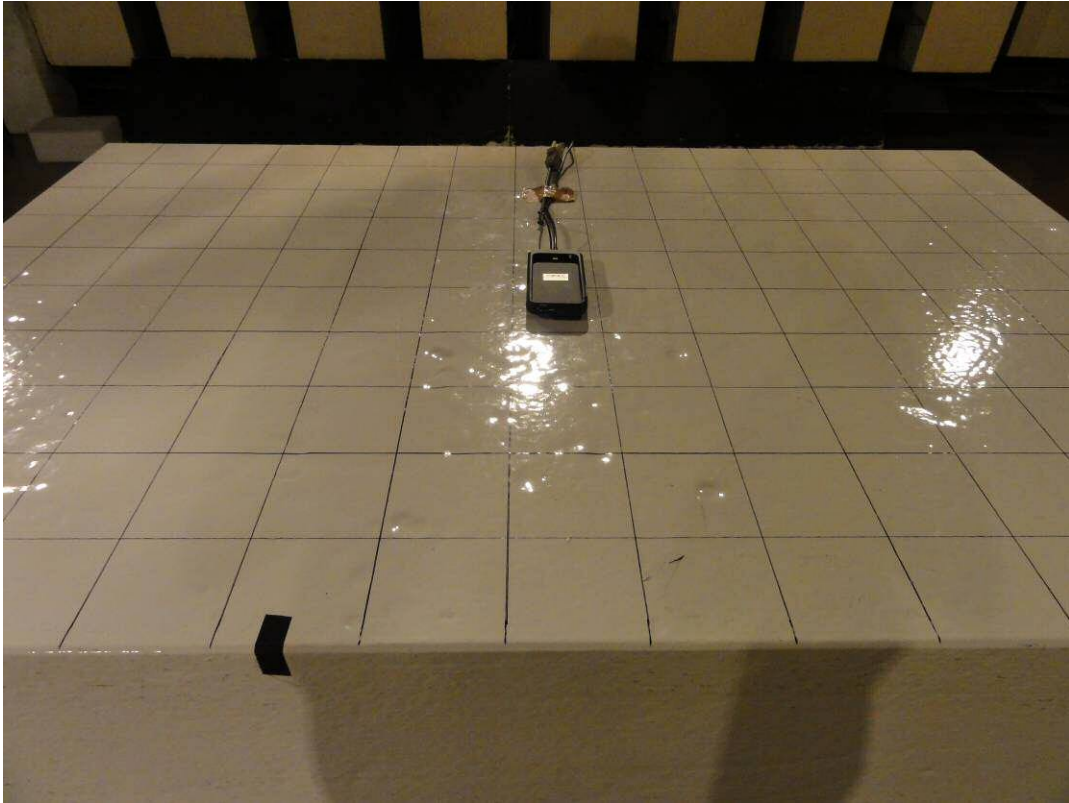
7.11.2 Radiated Emission**7.11.2.1 Host : Linea Pro 5.0**

– Front View –



– Rear View –

Photograph present configuration with maximum emission

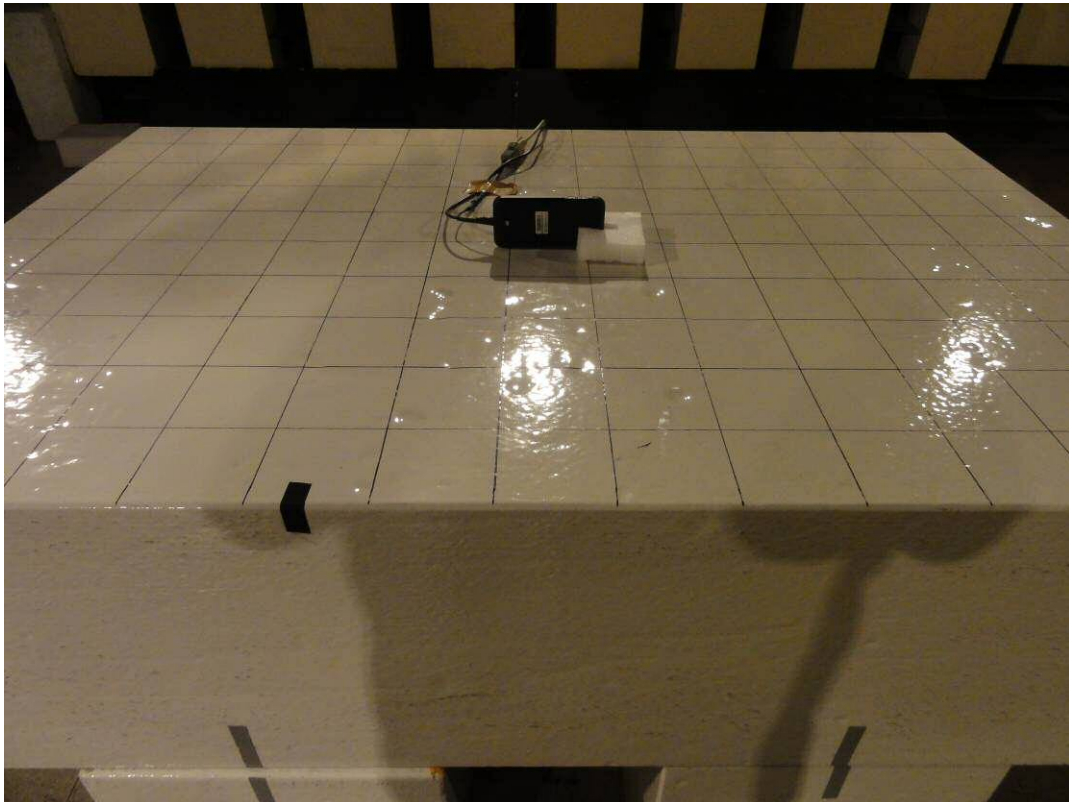


- X Axis -



- Y Axis -

Photograph present configuration with maximum emission



–Z Axis–

Photograph present configuration with maximum emission

7.11.2.2 Host : Infineon TAB 4.0

– Front View –

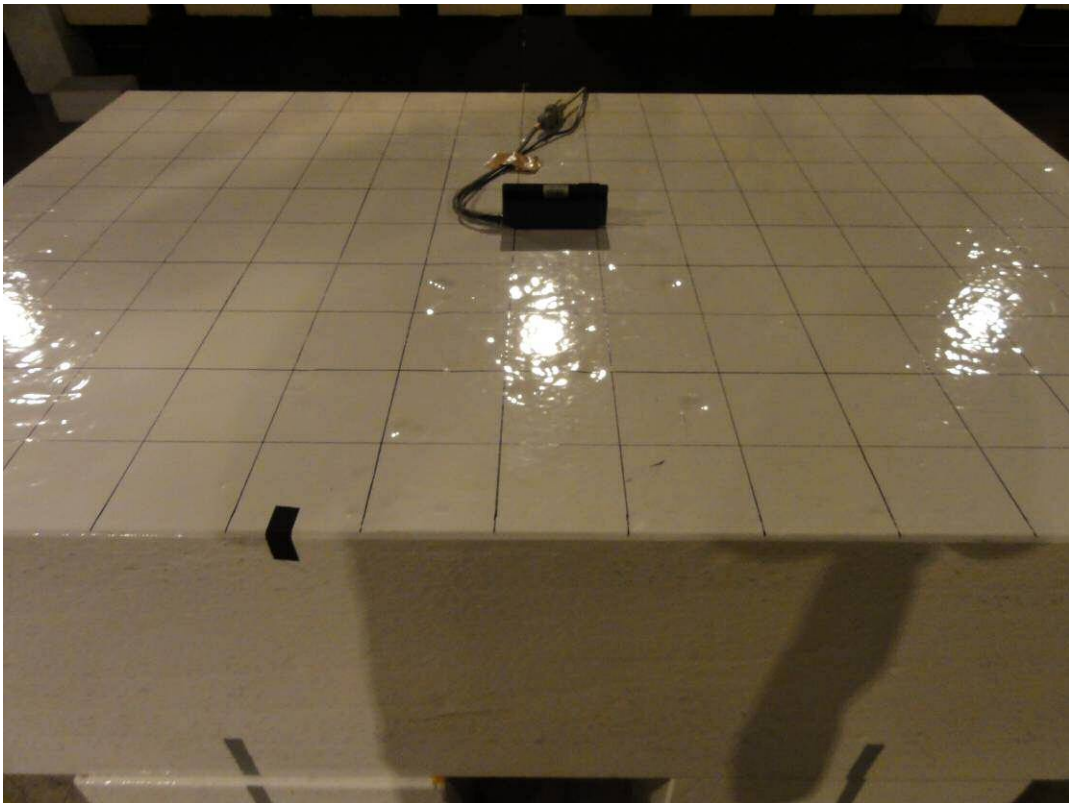


– Rear View –

Photograph present configuration with maximum emission

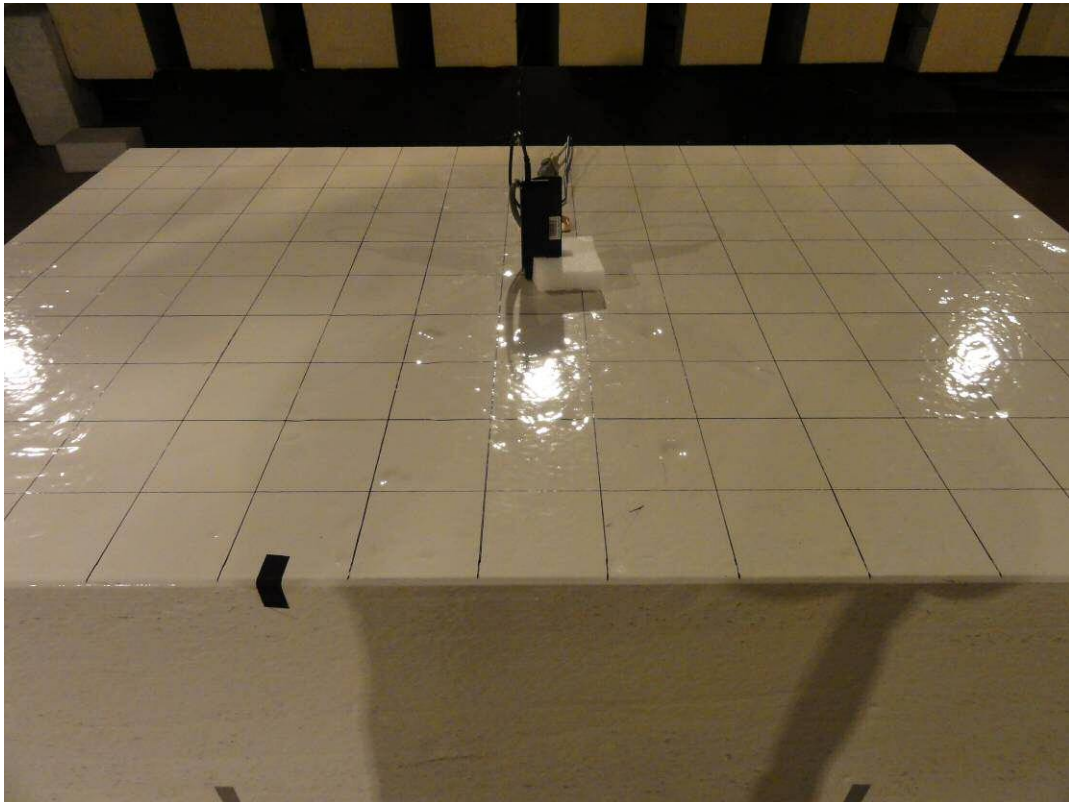


- X Axis -



- Y Axis -

Photograph present configuration with maximum emission

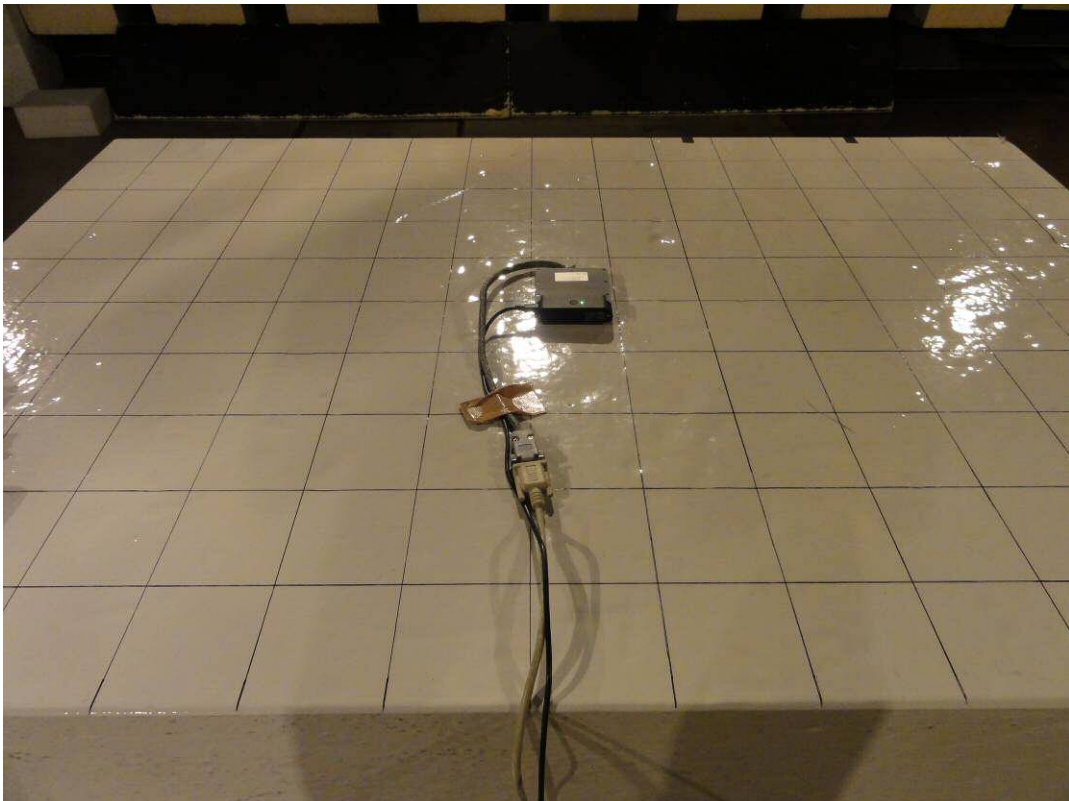


–Z Axis–

Photograph present configuration with maximum emission

7.11.2.3 Host : Infineon TAB mini

– Front View –

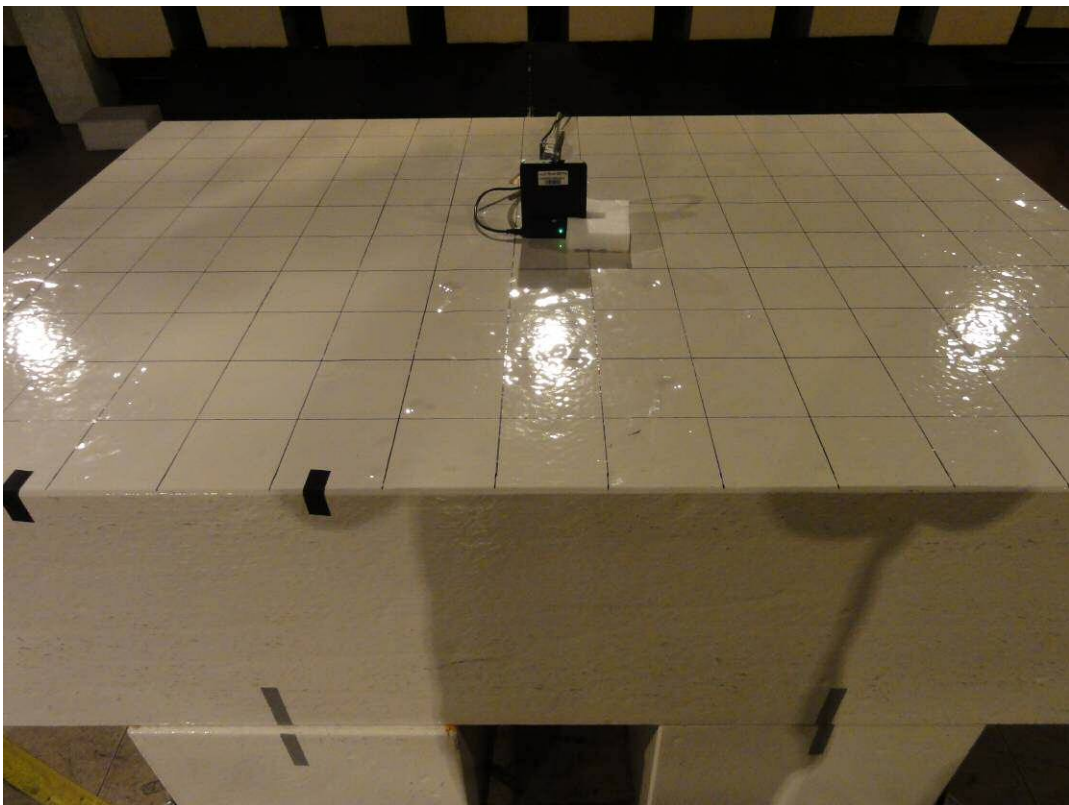


– Rear View –

Photograph present configuration with maximum emission

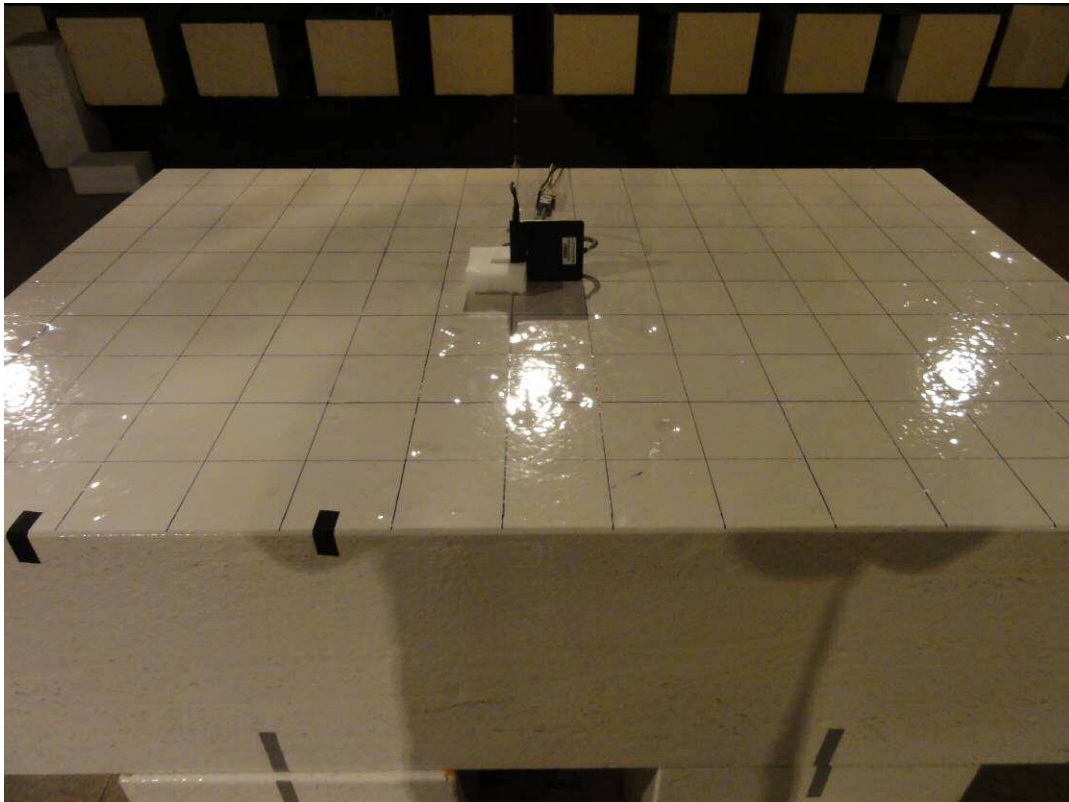


- X Axis -



- Y Axis -

Photograph present configuration with maximum emission



–Z Axis–

Photograph present configuration with maximum emission