



SAR TEST REPORT

For

Datecs Ltd.

BlueCash-50

Test Model:BlueCash-50

Additional Model No.: QuantumPay Pro Plus

Prepared for : Datecs Ltd.
Address : 115A Tzarigradsko Shosse, Fl.4 SOFIA Bulgaria

Prepared by : Shenzhen LCS Compliance Testing Laboratory Ltd.
Address : 101, 201 Bldg A & 301 Bldg C, Juji Industrial Park
Yabianxueziwei, Shajing Street, Baoan District, Shenzhen,
518000, China
Tel : (86)755-82591330
Fax : (86)755-82591332
Web : www.LCS-cert.com
Mail : webmaster@LCS-cert.com

Date of receipt of test sample : September 14, 2022
Number of tested samples : 2
Sample No. : A090822018-1, A090822018-2
Serial number : Prototype
Date of Test : September 14, 2022~September 29, 2022
Date of Report : October 19, 2022





SAR TEST REPORT

Report Reference No. : **LCSA090822018EB**

Date Of Issue : October 19, 2022

Testing Laboratory Name..... : **Shenzhen LCS Compliance Testing Laboratory Ltd.**

Address : 101, 201 Bldg A & 301 Bldg C, Juji Industrial Park Yabianxueziwei, Shajing Street, Baoan District, Shenzhen, 518000, China

Testing Location/ Procedure : Full application of Harmonised standards
Partial application of Harmonised standards
Other standard testing method

Applicant's Name : **Datecs Ltd.**

Address : 115A Tzarigradsko Shosse, Fl.4 SOFIA Bulgaria

Test Specification:

Standard..... : IEEE Std C95.1, 2019/ IEEE Std 1528™-2013/FCC Part 2.1093

Test Report Form No. : LCSEMC-1.0

TRF Originator..... : Shenzhen LCS Compliance Testing Laboratory Ltd.

Master TRF : Dated 2011-03

Shenzhen LCS Compliance Testing Laboratory Ltd. All rights reserved.

This publication may be reproduced in whole or in part for non-commercial purposes as long as the Shenzhen LCS Compliance Testing Laboratory Ltd. is acknowledged as copyright owner and source of the material. Shenzhen LCS Compliance Testing Laboratory Ltd. takes noresponsibility for and will not assume liability for damages resulting from the reader's interpretation of the reproduced material due to its placement and context.

Test Item Description..... : **BlueCash-50**

Trade Mark : /

Model/Type Reference..... : BlueCash-50

Operation Frequency : GSM 850,1900;WCDMA II, IV ,V;
LTE2,4,5,7,12,17,25,26,38,41,66;WLAN2.4G,5.2G,5.3G,5.5G,5.8G

Ratings : Input: DC 5V/2.4A
Output: DC 5V/0.5A
DC 7.2V by Rechargeable Li-ion Battery, 2600mAh

Result : **Positive**

Compiled by:

Jay Zhan/ File administrators

Supervised by:

Cary Luo / Technique principal

Approved by:

Gavin Liang/ Manager





SAR -- TEST REPORT

Test Report No. :	LCSA090822018EB	<u>October 19, 2022</u> Date of issue
--------------------------	------------------------	--

Type / Model.....	: BlueCash-50
EUT.....	: BlueCash-50
Applicant.....	: Datecs Ltd.
Address.....	: 115A Tzarigradsko Shosse, Fl.4 SOFIA Bulgaria
Telephone.....	: /
Fax.....	: /
Manufacturer.....	: Datecs Ltd.
Address.....	: 115A Tzarigradsko Shosse, Fl.4 SOFIA Bulgaria
Telephone.....	: /
Fax.....	: /
Factory.....	: Datecs Ltd.
Address.....	: 115A Tzarigradsko Shosse, Fl.4 SOFIA Bulgaria
Telephone.....	: /
Fax.....	: /

Test Result	Positive
--------------------	-----------------

The test report merely corresponds to the test sample.
It is not permitted to copy extracts of these test result without the written permission of the test laboratory.





Revision History

Revision	Issue Date	Revision Content	Revised By
000	October 19, 2022	Initial Issue	--





TABLE OF CONTENTS

- 1. TEST STANDARDS AND TEST DESCRIPTION.....6**
 - 1.1. TEST STANDARDS6
 - 1.2. TEST DESCRIPTION.....6
 - 1.3. GENERAL REMARKS6
 - 1.4. PRODUCT DESCRIPTION6
 - 1.5. STATEMENT OF COMPLIANCE9
- 2. TEST ENVIRONMENT10**
 - 2.1. TEST FACILITY10
 - 2.2. ENVIRONMENTAL CONDITIONS10
 - 2.3. SAR LIMITS10
 - 2.4. EQUIPMENTS USED DURING THE TEST11
- 3. SAR MEASUREMENTS SYSTEM CONFIGURATION12**
 - 3.1. SARMEASUREMENT SET-UP.....12
 - 3.2. OPENSAR E-FIELD PROBE SYSTEM.....13
 - 3.3. PHANTOMS.....14
 - 3.4. DEVICE HOLDER14
 - 3.5. SCANNING PROCEDURE15
 - 3.6. DATA STORAGE AND EVALUATION.....17
 - 3.7. TISSUE DIELECTRIC PARAMETERS FOR HEAD AND BODY PHANTOMS19
 - 3.8. TISSUE EQUIVALENT LIQUID PROPERTIES19
 - 3.9. SYSTEM CHECK20
 - 3.10. SAR MEASUREMENT PROCEDURE23
 - 3.11. POWER REDUCTION28
 - 3.12. POWER DRIFT28
- 4. TEST CONDITIONS AND RESULTS.....29**
 - 4.1. CONDUCTED POWER RESULTS29
 - 4.2. TRANSMIT ANTENNAS AND SAR MEASUREMENT POSITION.....55
 - 4.3. SAR MEASUREMENT RESULTS56
 - 4.4. SIMULTANEOUS TX SAR CONSIDERATIONS64
 - 4.5. SAR MEASUREMENT VARIABILITY65
 - 4.6. GENERAL DESCRIPTION OF TEST PROCEDURES66
 - 4.7. MEASUREMENT UNCERTAINTY (450MHZ-6GHZ).....67
 - 4.8. SYSTEM CHECK RESULTS68
 - 4.9. SAR TEST GRAPH RESULTS.....78
- 5. CALIBRATION CERTIFICATES99**
 - 5.1 PROBE-EPGO376 CALIBRATION CERTIFICATE.....99
 - 5.2 SID750DIPOLE CALIBRATION CERITICATE.....110
 - 5.3 SID835DIPOLE CALIBRATION CERITICATE.....121
 - 5.4 SID1800 DIPOLE CALIBRATION CERTIFICATE132
 - 5.5 SID1900 DIPOLE CALIBRATION CERTIFICATE143
 - 5.6 SID2450 DIPOLE CALIBRATION CERITICATE.....154
 - 5.7 SID2600 DIPOLE CALIBRATION CERITICATE.....165
 - 5.8 SID5G-6G DIPOLE CALIBRATION CERITICATE.....176
- 6. PHOTOGRAPHS OF THE LIQUID189**
- 7. PHOTOGRAPHS OF THE TEST193**
- 8. EUT PHOTOGRAPHS194**





1. TEST STANDARDS AND TEST DESCRIPTION

1.1. Test Standards

[IEEE Std C95.1-2019](#): IEEE Standard for Safety Levels with Respect to Human Exposure to Electric, Magnetic, and Electromagnetic Fields, 0 Hz to 300 GHz. It specifies the maximum exposure limit of 1.6 W/kg as averaged over any 1 gram of tissue for portable devices being used within 20 cm of the user in the uncontrolled environment.

[IEEE Std 1528™-2013](#): IEEE Recommended Practice for Determining the Peak Spatial-Average Specific Absorption Rate (SAR) in the Human Head from Wireless Communications Devices: Measurement Techniques.

[FCC Part 2.1093 Radiofrequency Radiation Exposure Evaluation: Portable Devices](#)

[KDB447498 D01 General RF Exposure Guidance v06](#) : Mobile and Portable Device RF Exposure Procedures and Equipment Authorization Policies

[KDB447498 D02 SAR Procedures for Dongle Xmtr v02r01](#): SAR Measurement Procedures For USB Dongle Transmitters.

[KDB865664 D01 SAR Measurement 100 MHz to 6 GHz v01r04](#) : SAR Measurement Requirements for 100 MHz to 6 GHz

[KDB865664 D02 RF Exposure Reporting v01r02](#): RF Exposure Compliance Reporting and Documentation Considerations

[KDB 248227 D01 802.11 Wi-Fi SAR v02r02](#): SAR GUIDANCE FOR IEEE 802.11 (Wi-Fi) TRANSMITTERS

[KDB941225 D01 3G SAR Procedures](#): 3G SAR MEAUREMENT PROCEDURES

[KDB 941225 D05 SAR for LTE Devices](#): SAR Evaluation Considerations For LTE Devices

1.2. Test Description

The EUT battery must be fully charged and checked periodically during the test to ascertain uniform power . And Test device is identical prototype.

1.3. General Remarks

Date of receipt of test sample	:	September 14, 2022
Testing commenced on	:	September 14, 2022
Testing concluded on	:	September 29, 2022

1.4. Product Description

The Datecs Ltd.'s Model: BlueCash-50 or the "EUT" as referred to in this report; more general information as follows, for more details, refer to the user's manual of the EUT.

General Description	
EUT :	BlueCash-50
Model/Type reference:	BlueCash-50
Additional Model No.	QuantumPay Pro Plus
Model Declaration:	/
Hardware Version	21.12.xx.xxx
Software Version	1.0.xx.xx
Power supply:	Input: DC 5V/2.4A Output: DC 5V/0.5A DC 7.2V by Rechargeable Li-ion Battery, 2600mAh
<i>The EUT is BlueCash-50 . the BlueCash-50 is intended for WLAN transmission. It is equipped with Wi-Fi 2.4G, 5.2G, 5.3G, 5.5G, 5.8G; GSM 850, 1900; WCDMA Band II, Band IV, Band V; LTE 2, 4, 5, 7, 12, 17, 25, 26, 38 41, 66. For more information see the following datasheet</i>	





Technical Characteristics	
LTE	
Operation Band:	<input checked="" type="checkbox"/> E-UTRA Band 2(U.S.-Band) <input checked="" type="checkbox"/> E-UTRA Band 4(U.S.-Band) <input checked="" type="checkbox"/> E-UTRA Band 5(U.S.-Band) <input checked="" type="checkbox"/> E-UTRA Band 7(U.S.-Band) <input checked="" type="checkbox"/> E-UTRA Band 12(U.S.-Band) <input checked="" type="checkbox"/> E-UTRA Band 17(U.S.-Band) <input checked="" type="checkbox"/> E-UTRA Band 25(U.S.-Band) <input checked="" type="checkbox"/> E-UTRA Band 26(U.S.-Band) <input checked="" type="checkbox"/> E-UTRA Band 38(U.S.-Band) <input checked="" type="checkbox"/> E-UTRA Band 41(U.S.-Band) <input checked="" type="checkbox"/> E-UTRA Band 66(U.S.-Band)
Modulation Type:	QPSK/16QAM
Release Version:	R9
Power Class:	Class 3
Antenna Description:	FPC Antenna 0.10dBi (max.) For E-UTRA Band 2 1.88dBi (max.) For E-UTRA Band 4 -3.63dBi (max.) For E-UTRA Band 5 1.85dBi (max.) For E-UTRA Band 7 -3.77dBi (max.) For E-UTRA Band 12 -3.77dBi (max.) For E-UTRA Band 17 0.10dBi (max.) For E-UTRA Band 25 -3.63dBi (max.) For E-UTRA Band 26 1.57dBi (max.) For E-UTRA Band 38 1.85dBi (max.) For E-UTRA Band 41 1.88dBi (max.) For E-UTRA Band 66
WIFI 2.4G	
Frequency Range:	2412MHz-2462MHz
Type of Modulation:	IEEE 802.11b: DSSS (CCK, DQPSK, DBPSK) IEEE 802.11g: OFDM (64QAM, 16QAM, QPSK, BPSK) IEEE 802.11n: OFDM (64QAM, 16QAM, QPSK, BPSK)
Channel number:	11 channels for 20MHz bandwidth (2412~2462MHz) 7 channels for 40MHz bandwidth (2422~2452MHz)
Channel separation:	5MHz
Antenna Description:	FPC Antenna, 1.36dBi(Max.)
WIFI 5G	
Frequency Range:	5180-5240MHz, 5260-5320MHz, 5500-5700MHz
Type of Modulation:	IEEE 802.11a/n/ac: OFDM (256QAM, 64QAM, 16QAM, QPSK, BPSK)
Channel number:	4 Channels for 20MHz bandwidth(5180MHz-5240MHz) 4 Channels for 20MHz bandwidth(5260MHz-5320MHz) 11 Channels for 20MHz bandwidth(5500MHz-5700MHz) 2 channels for 40MHz bandwidth(5190MHz~5230MHz) 2 channels for 40MHz bandwidth(5270MHz~5310MHz) 5 Channels for 40MHz bandwidth(5510MHz-5670MHz) 1 channels for 80MHz bandwidth(5210MHz) 1 channels for 80MHz bandwidth(5290MHz) 2 Channels for 80MHz bandwidth(5530MHz,5610MHz)
Antenna Description:	FPC Antenna, -0.14dBi(Max.) For 5180-5240MHz -0.24dBi(Max.) For 5260-5320MHz 0.42dBi(Max.) For 5500-5700MHz





WIFI 5.8G	
Frequency Range:	5745-5825MHz
Type of Modulation:	IEEE 802.11a/n/ac: OFDM (256QAM, 64QAM, 16QAM, QPSK, BPSK)
Channel number:	5 channels for 20MHz bandwidth(5745-5825MHz) 2 channels for 40MHz bandwidth(5755~5795MHz) 1 channels for 80MHz bandwidth(5775MHz)
Antenna Description:	FPC Antenna, 1.0dBi(Max.)
UMTS	
Operation Band:	<input checked="" type="checkbox"/> WCDMA Band II (U.S.-Band) <input checked="" type="checkbox"/> WCDMA Band V (U.S.-Band) <input checked="" type="checkbox"/> WCDMA Band IV (U.S.-Band) <input checked="" type="checkbox"/> WCDMA Band I (EU-Band) <input checked="" type="checkbox"/> WCDMA Band VIII (EU-Band)
FrequencyRange:	WCDMA Band II: 1852.4~1907.6MHz WCDMA Band V: 826.4~846.6MHz
Modulation Type:	QPSK,16QAM
Release Version	R7/R8
Antenna Description:	FPC Antenna 0.10dBi (max.) For WCDMA Band II 1.88dBi (max.) For WCDMA Band IV -3.63dBi (max.) For WCDMA Band V
GSM	
Support Band:	<input checked="" type="checkbox"/> GSM 900 (EU-Band) <input checked="" type="checkbox"/> DCS 1800 (EU-Band) <input checked="" type="checkbox"/> GSM 850 (U.S.-Band) <input checked="" type="checkbox"/> PCS 1900 (U.S.-Band)
Release Version:	R99
GPRS Class	Class 12
EGPRS Class	Class 12
Modulation Type:	GMSK for GSM/GPRS; GMSK/8PSK for EGPRS
Antenna Description:	FPC Antenna -3.63dBi (max.) For GSM 850 0.10dBi (max.) For PCS 1900
GPS function	Support and only RX
NFC	
Operating Frequency	13.56MHz
Modulation Type	ASK
Antenna Description	FPC Antenna, 0dBi(Max.)





1.5. Statement of Compliance

The maximum of results of SAR found during testing for BlueCash-50 are follows:

<Highest Reported standalone SAR Summary>

Classment Class	Frequency Band	Hotspot (Report SAR _{1-g} (W/kg))	Body-worn (Report SAR _{1-g} (W/kg))
		(Separation Distance 0mm)	
PCB	GSM 850	0.536	0.536
	GSM1900	0.041	0.041
	WCDMA Band V	0.432	0.432
	WCDMA Band IV	1.299	1.299
	WCDMA Band II	1.215	1.215
	LTE band 2	1.189	1.189
	LTE band 4	1.013	1.013
	LTE band 5	0.546	0.546
	LTE band 7	0.814	0.814
	LTE band 12	0.057	0.057
	LTE band 17	0.061	0.061
	LTE band 25	1.154	1.154
	LTE band 26	0.383	0.383
	LTE band 38	0.935	0.935
	LTE band 41	1.051	1.051
LTE band 66	0.751	0.751	
DTS	WIFI2.4G	0.111	0.111
NII	WIFI5.2G	0.094	0.094
	WIFI5.3G	0.084	0.084
	WIFI5.5G	0.099	0.099
	WIFI5.8G	0.082	0.082

This device is in compliance with Specific Absorption Rate (SAR) for general population/uncontrolled exposure limits (1.6 W/kg) specified in FCC 47 CFR part 2 (2.1093) and ANSI/IEEE C95.1-2019, and had been tested in accordance with the measurement methods and procedures specified in IEEE 1528-2013.

<Highest Reported simultaneous SAR Summary>

Exposure Position	Classment Class	Highest Reported Simultaneous Transmission SAR _{1-g} (W/kg)
Body-worn (hotspot open)	PCB	1.410
	DTS	





2. TEST ENVIRONMENT

2.1. Test Facility

The test facility is recognized, certified, or accredited by the following organizations:

Site Description
EMC Lab.

: NVLAP Accreditation Code is 600167-0.
FCC Designation Number is CN5024.
CAB identifier is CN0071.
CNAS Registration Number is L4595.
Test Firm Registration Number: 254912.

2.2. Environmental conditions

During the measurement the environmental conditions were within the listed ranges:

Temperature:	18-25 ° C
Humidity:	40-65 %
Atmospheric pressure:	950-1050mbar

2.3. SAR Limits

FCC Limit (1g Tissue)

EXPOSURE LIMITS	SAR (W/kg)	
	(General Population / Uncontrolled Exposure Environment)	(Occupational / Controlled Exposure Environment)
Spatial Average(averaged over the whole body)	0.08	0.4
Spatial Peak(averaged over any 1 g of tissue)	1.6	8.0
Spatial Peak(hands/wrists/ feet/anklesaveraged over 10 g)	4.0	20.0

Population/Uncontrolled Environments are defined as locations where there is the exposure of individual who have no knowledge or control of their exposure.

Occupational/Controlled Environments are defined as locations where there is exposure that may be incurred by people who are aware of the potential for exposure (i.e. as a result of employment or occupation).



Shenzhen LCS Compliance Testing Laboratory Ltd.

Add: 101, 201 Bldg A & 301 Bldg C, Juji Industrial Park Yabianxueziwei, Shajing Street, Baoan District, Shenzhen, 518000, China

Tel: +(86) 0755-82591330 | E-mail: webmaster@lcs-cert.com | Web: www.lcs-cert.com

Scan code to check authenticity



2.4. Equipments Used during the Test

Item	Equipment	Manufacturer	Model No.	Serial No.	Cal Date	Due Date
1	PC	Lenovo	G5005	MY42081102	N/A	N/A
2	SAR Measurement system	SATIMO	4014_01	SAR_4014_01	N/A	N/A
3	Signal Generator	Agilent	E4438C	MY49072627	2022-06-16	2023-06-15
4	Multimeter	Keithley	MiltiMeter 2000	4059164	2021-11-13	2022-11-12
5	S-parameter Network Analyzer	Agilent	8753ES	US38432944	2021-11-13	2022-11-12
6	Wideband Radio Communication Tester	R&S	CMW500	103818-1	2021-11-20	2022-11-19
7	E-Field PROBE	MVG	SSE2	SN 25/22 EPGO376	2022-06-29	2023-06-28
8	DIPOLE 750	SATIMO	SID 750	SN 07/14 DIP 0G750-302	2021-09-29	2024-09-28
9	DIPOLE 835	SATIMO	SID 835	SN 07/14 DIP 0G835-303	2021-09-29	2024-09-28
10	DIPOLE 1800	SATIMO	SID 1800	SN 07/14 DIP 1G800-301	2021-09-29	2024-09-28
11	DIPOLE 1900	SATIMO	SID 1900	SN 38/18 DIP 1G900-466	2021-09-22	2024-09-21
12	DIPOLE 2450	SATIMO	SID 2450	SN 07/14 DIP 2G450-306	2021-09-29	2024-09-28
13	DIPOLE 2600	SATIMO	SID 2600	SN 38/18 DIP 2G600-468	2021-09-22	2024-09-21
14	DIPOLE 5000-6000	MVG	SWG5500	SN 49/16 WGA 43	2021-09-22	2024-09-21
15	COMOSAR OPENCoaxial Probe	SATIMO	OCPG 68	SN 40/14 OCPG68	2021-11-13	2022-11-12
16	SAR Locator	SATIMO	VPS51	SN 40/14 VPS51	2021-11-13	2022-11-12
17	Communication Antenna	SATIMO	ANTA57	SN 39/14 ANTA57	2021-11-13	2022-11-12
18	FEATURE PHONEPOSITIONING DEVICE	SATIMO	MSH98	SN 40/14 MSH98	N/A	N/A
19	DUMMY PROBE	SATIMO	DP60	SN 03/14 DP60	N/A	N/A
20	SAM PHANTOM	SATIMO	SAM117	SN 40/14 SAM117	N/A	N/A
21	Liquid measurement Kit	HP	85033D	3423A03482	2021-11-13	2022-11-12
22	Power meter	Agilent	E4419B	MY45104493	2021-11-15	2022-11-14
23	Power meter	Agilent	E4419B	MY45100308	2021-11-20	2022-11-19
24	Power sensor	Agilent	E9301H	MY41495616	2021-11-20	2022-11-19
25	Power sensor	Agilent	E9301H	MY41495234	2021-11-15	2022-11-14
26	Directional Coupler	MCLI/USA	4426-20	03746	2022-06-16	2023-06-15

Note:

- 1) Per KDB865664D01 requirements for dipole calibration, the test laboratory has adopted three year extended calibration interval. Each measured dipole is expected to evaluate with following criteria at least on annual interval.
 - a) There is no physical damage on the dipole;
 - b) System check with specific dipole is within 10% of calibrated values;
 - c) The most recent return-loss results,measured at least annually,deviates by no more than 20% from the previous measurement;
 - d) The most recent measurement of the real or imaginary parts of the impedance, measured at least annually is within 5Ω from the previous measurement.
- 2) Network analyzer probe calibration against air, distilled water and a shorting block performed before measuring liquid parameters.



3. SAR MEASUREMENTS SYSTEM CONFIGURATION

3.1. SAR Measurement Set-up

The OPENSAR system for performing compliance tests consist of the following items:

A standard high precision 6-axis robot (KUKA) with controller and software.

KUKA Control Panel (KCP)

A dosimetric probe, i.e., an isotropic E-field probe optimized and calibrated for usage in tissue simulating liquid. The probe is equipped with a Video Positioning System(VPS).

The stress sensor is composed with mechanical and electronic when the electronic part detects a change on the electro-mechanical switch,It sends an "Emergency signal" to the robot controller that to stop robot's moves

A computer operating Windows XP.

OPENSAR software

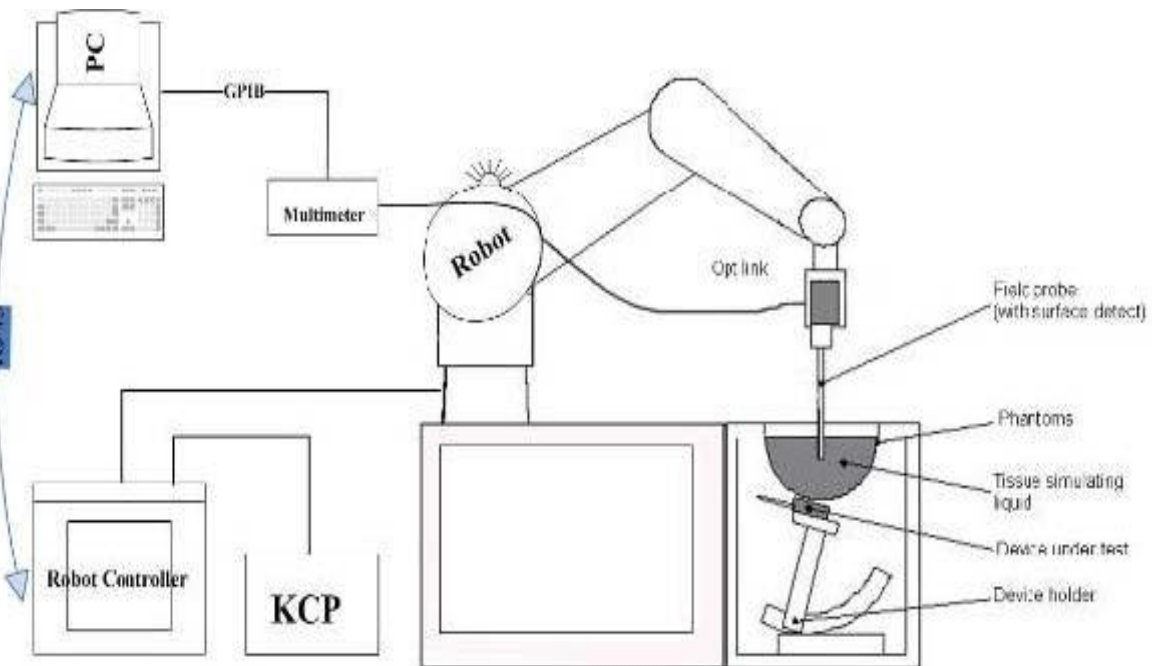
Remote control with teaches pendant and additional circuitry for robot safety such as warning lamps, etc.

The SAM phantom enabling testing left-hand right-hand and body usage.

The Position device for handheld EUT

Tissue simulating liquid mixed according to the given recipes .

System validation dipoles to validate the proper functioning of the system.





3.2. OPENSAR E-field Probe System

The SAR measurements were conducted with the dosimetric probe EPGO376 (manufactured by MVG), designed in the classical triangular configuration and optimized for dosimetric evaluation.

Probe Specification

Construction Symmetrical design with triangular core
 Interleaved sensors
 Built-in shielding against static charges
 PEEK enclosure material (resistant to organic solvents, e.g., DGBE)

Calibration ISO/IEC 17025 calibration service available.

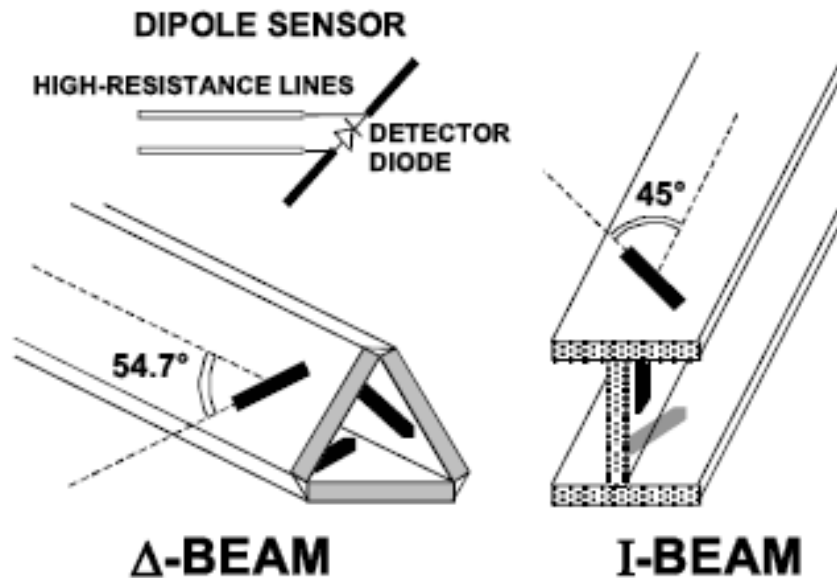
Frequency	450 MHz to 6 GHz; Linearity: 0.25dB(450 MHz to 6 GHz)
Directivity	0.25 dB in HSL (rotation around probe axis) 0.5 dB in tissue material (rotation normal to probe axis)
Dynamic Range	0.01W/kg to > 100 W/kg; Linearity: 0.25 dB
Dimensions	Overall length: 330 mm (Tip: 16mm) Tip diameter: 5 mm (Body: 8 mm) Distance from probe tip to sensor centers: 2.5 mm
Application	General dosimetry up to 6 GHz Dosimetry in strong gradient fields Compliance tests of Mobile Phones

Isotropic E-Field Probe

The isotropic E-Field probe has been fully calibrated and assessed for isotropicity, and boundary effect within a controlled environment. Depending on the frequency for which the probe is calibrated the method utilized for calibration will change.

The E-Field probe utilizes a triangular sensor arrangement as detailed in the diagram below:

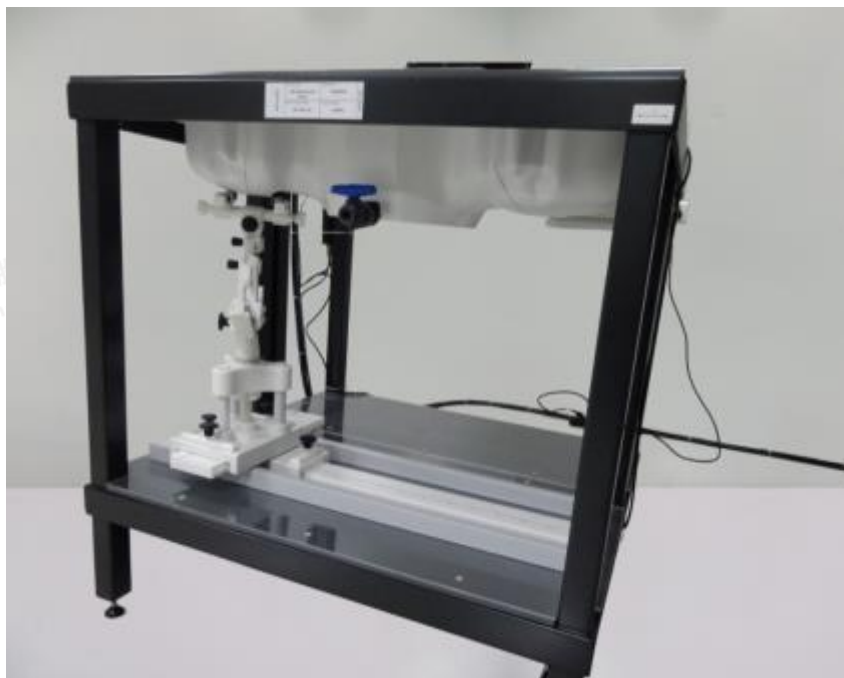




3.3. Phantoms

The SAM Phantom SAM117 is constructed of a fiberglass shell integrated in a wooden table. The shape of the shell is in compliance with the specification set in IEEE 1528 and EN62209-1, EN62209-2. The phantom enables the dosimetric evaluation of left and right hand phone usage as well as body mounted usage at the flat phantom region. A cover prevents the evaporation of the liquid. Reference markings on the Phantom allow the complete setup of all predefined phantom positions and measurement grids by manually teaching three points in the robot.

System checking was performed using the flat section, whilst Head SAR tests used the left and right head profile sections. Body SAR testing also used the flat section between the head profiles.



SAM Twin Phantom

3.4. Device Holder

In combination with the Generic Twin Phantom SAM117, the Mounting Device enables the rotation of the



mounted transmitter in spherical coordinates whereby the rotation points is the ear opening. The devices can be easily, accurately, and repeatedly positioned according to the FCC specifications. The device holder can be locked at different phantom locations (left head, right head, flat phantom).



Device holder supplied by SATIMO

3.5. Scanning Procedure

The procedure for assessing the peak spatial-average SAR value consists of the following steps

Power Reference Measurement

The reference and drift jobs are useful jobs for monitoring the power drift of the device under test in the batch process. Both jobs measure the field at a specified reference position, at a selectable distance from the phantom surface. The reference position can be either the selected section's grid reference point or a user point in this section. The reference job projects the selected point onto the phantom surface, orients the probe perpendicularly to the surface, and approaches the surface using the selected detection method.

Area Scan

The Area Scan is used as a fast scan in two dimensions to find the area of high field values before running a detailed measurement around the hot spot. Before starting the area scan a grid spacing of 15 mm x 15 mm is set. During the scan the distance of the probe to the phantom remains unchanged. After finishing area scan, the field maxima within a range of 2 dB will be ascertained.

	≤ 3 GHz	> 3 GHz
Maximum distance from closest measurement point (geometric center of probe sensors) to phantom surface	5 mm ± 1 mm	$\frac{1}{2} \cdot \delta \cdot \ln(2)$ mm ± 0.5 mm
Maximum probe angle from probe axis to phantom surface normal at the measurement location	30° ± 1°	20° ± 1°
Maximum area scan spatial resolution: Δx_{Area} , Δy_{Area}	≤ 2 GHz: ≤ 15 mm 2 – 3 GHz: ≤ 12 mm	3 – 4 GHz: ≤ 12 mm 4 – 6 GHz: ≤ 10 mm
	When the x or y dimension of the test device, in the measurement plane orientation, is smaller than the above, the measurement resolution must be ≤ the corresponding x or y dimension of the test device with at least one measurement point on the test device.	

Zoom Scan

Zoom Scans are used to estimate the peak spatial SAR values within a cubic averaging volume containing 1 g and 10 g of simulated tissue. The default Zoom Scan is done by 7x7x7 points within a cube whose base is centered around the maxima found in the preceding area scan.





Maximum zoom scan spatial resolution: $\Delta x_{Zoom}, \Delta y_{Zoom}$		≤ 2 GHz: ≤ 8 mm 2 – 3 GHz: ≤ 5 mm*	3 – 4 GHz: ≤ 5 mm* 4 – 6 GHz: ≤ 4 mm*
Maximum zoom scan spatial resolution, normal to phantom surface	uniform grid: $\Delta z_{Zoom}(n)$	≤ 5 mm	3 – 4 GHz: ≤ 4 mm 4 – 5 GHz: ≤ 3 mm 5 – 6 GHz: ≤ 2 mm
	graded grid	$\Delta z_{Zoom}(1)$: between 1 st two points closest to phantom surface	≤ 4 mm
		$\Delta z_{Zoom}(n>1)$: between subsequent points	$\leq 1.5 \cdot \Delta z_{Zoom}(n-1)$ mm
Minimum zoom scan volume	x, y, z	≥ 30 mm	3 – 4 GHz: ≥ 28 mm 4 – 5 GHz: ≥ 25 mm 5 – 6 GHz: ≥ 22 mm
<p>Note: δ is the penetration depth of a plane-wave at normal incidence to the tissue medium; see IEEE Std 1528-2013 for details.</p> <p>* When zoom scan is required and the <i>reported</i> SAR from the <i>area scan based 1-g SAR estimation</i> procedures of KDB Publication 447498 is ≤ 1.4 W/kg, ≤ 8 mm, ≤ 7 mm and ≤ 5 mm zoom scan resolution may be applied, respectively, for 2 GHz to 3 GHz, 3 GHz to 4 GHz and 4 GHz to 6 GHz.</p>			



Power Drift measurement

The drift job measures the field at the same location as the most recent reference job within the same procedure, and with the same settings. The drift measurement gives the field difference in dB from the reading conducted within the last reference measurement. Several drift measurements are possible for one reference measurement. This allows a user to monitor the power drift of the device under test within a batch process. In the properties of the Drift job, the user can specify a limit for the drift and have OPENSAR software stop the measurements if this limit is exceeded.

3.6. Data Storage and Evaluation

Data Storage

The OPENSAR software stores the acquired data from the data acquisition electronics as raw data (in microvolt readings from the probe sensors), together with all necessary software parameters for the data evaluation (probe calibration data, liquid parameters and device frequency and modulation data) in measurement files. The software evaluates the desired unit and format for output each time the data is visualized or exported. This allows verification of the complete software setup even after the measurement and allows correction of incorrect parameter settings. For example, if a measurement has been performed with a wrong crest factor parameter in the device setup, the parameter can be corrected afterwards and the data can be re-evaluated.

The measured data can be visualized or exported in different units or formats, depending on the selected probe type ([V/m], [A/m], [°C], [mW/g], [mW/cm²], [dBrel], etc.). Some of these units are not available in certain situations or show meaningless results, e.g., a SAR output in a lossless media will always be zero. Raw data can also be exported to perform the evaluation with other software packages.

Data Evaluation

The OPENSAR software automatically executes the following procedures to calculate the field units from the microvolt readings at the probe connector. The parameters used in the evaluation are stored in the configuration modules of the software:

Probe parameters:	- Sensitivity	Normi, ai0, ai1, ai2
	- Conversion factor	ConvFi
	- Diode compression point	Dcpi
Device parameters:	- Frequency	f
	- Crest factor	cf
Media parameters:	- Conductivity	σ
	- Density	ρ

These parameters must be set correctly in the software. They can be found in the component documents or they can be imported into the software from the configuration files issued for the OPENSAR components. In the direct measuring mode of the multimeter option, the parameters of the actual system setup are used. In the scan visualization and export modes, the parameters stored in the corresponding document files are used.

The first step of the evaluation is a linearization of the filtered input signal to account for the compression characteristics of the detector diode. The compensation depends on the input signal, the diode type and the DC-transmission factor from the diode to the evaluation electronics. If the exciting field is pulsed, the crest factor of the signal must be known to correctly compensate for peak power. The formula for each channel can be given as:

$$V_i = U_i + U_i^2 \cdot \frac{cf}{dcp_i}$$

With V_i = compensated signal of channel i ($i = x, y, z$)
 U_i = input signal of channel i ($i = x, y, z$)
 cf = crest factor of exciting field
 dcp_i = diode compression point

From the compensated input signals the primary field data for each channel can be evaluated:





E – fieldprobes :
$$E_i = \sqrt{\frac{V_i}{Norm_i \cdot ConvF}}$$

H – fieldprobes :
$$H_i = \sqrt{V_i \cdot \frac{a_{i0} + a_{i1}f + a_{i2}f^2}{f}}$$

- With V_i = compensated signal of channel i
 $Norm_i$ = sensor sensitivity of channel i
 [mV/(V/m)²] for E-field Probes
 $ConvF$ = sensitivity enhancement in solution
 a_{ij} = sensor sensitivity factors for H-field probes
 f = carrier frequency [GHz]
 E_i = electric field strength of channel i in V/m
 H_i = magnetic field strength of channel i in A/m

The RSS value of the field components gives the total field strength (Hermitian magnitude):

$$E_{tot} = \sqrt{E_x^2 + E_y^2 + E_z^2}$$

The primary field data are used to calculate the derived field units.

$$SAR = E_{tot}^2 \cdot \frac{\sigma}{\rho \cdot 1'000}$$

- with SAR = local specific absorption rate in mW/g
 E_{tot} = total field strength in V/m
 σ = conductivity in [mho/m] or [Siemens/m]
 ρ = equivalent tissue density in g/cm³

Note that the density is normally set to 1 (or 1.06), to account for actual brain density rather than the density of the simulation liquid.



3.7. Tissue Dielectric Parameters for Head and Body Phantoms

The liquid is consisted of water,salt,Glycol,Sugar,Preventol and Cellulose.The liquid has previously been proven to be suited for worst-case.It's satisfying the latest tissue dielectric parameters requirements proposed by the KDB865664.

The composition of the tissue simulating liquid

Frequency (MHz)	Bactericide	DGBE	HEC	NaCl	Sucrose	1,2-Propanediol	X100	Water	Conductivity	Permittivity
	%	%	%	%	%	%	%	%	σ	ϵ_r
750	/	/	/	0.79	/	64.81	/	34.40	0.97	41.8
835	/	/	/	0.79	/	64.81	/	34.40	0.97	41.8
900	/	/	/	0.79	/	64.81	/	34.40	0.97	41.8
1800	/	13.84	/	0.35	/	/	30.45	55.36	1.38	41.0
1900	/	13.84	/	0.35	/	/	30.45	55.36	1.38	41.0
2000	/	7.99	/	0.16	/	/	19.97	71.88	1.55	41.1
2450	/	7.99	/	0.16	/	/	19.97	71.88	1.88	40.3
2600	/	7.99	/	0.16	/	/	19.97	71.88	1.88	40.3

Target Frequency (MHz)	Head		Body	
	ϵ_r	σ (S/m)	ϵ_r	σ (S/m)
150	52.3	0.76	61.9	0.80
300	45.3	0.87	58.2	0.92
450	43.5	0.87	56.7	0.94
835	41.5	0.90	55.2	0.97
900	41.5	0.97	55.0	1.05
915	41.5	0.98	55.0	1.06
1450	40.5	1.20	54.0	1.30
1610	40.3	1.29	53.8	1.40
1800-2000	40.0	1.40	53.3	1.52
2450	39.2	1.80	52.7	1.95
2600	39.0	1.96	52.5	2.16
3000	38.5	2.40	52.0	2.73
5800	35.3	5.27	48.2	6.00

3.8. Tissue equivalent liquid properties

Dielectric Performance of Head and Body Tissue Simulating Liquid

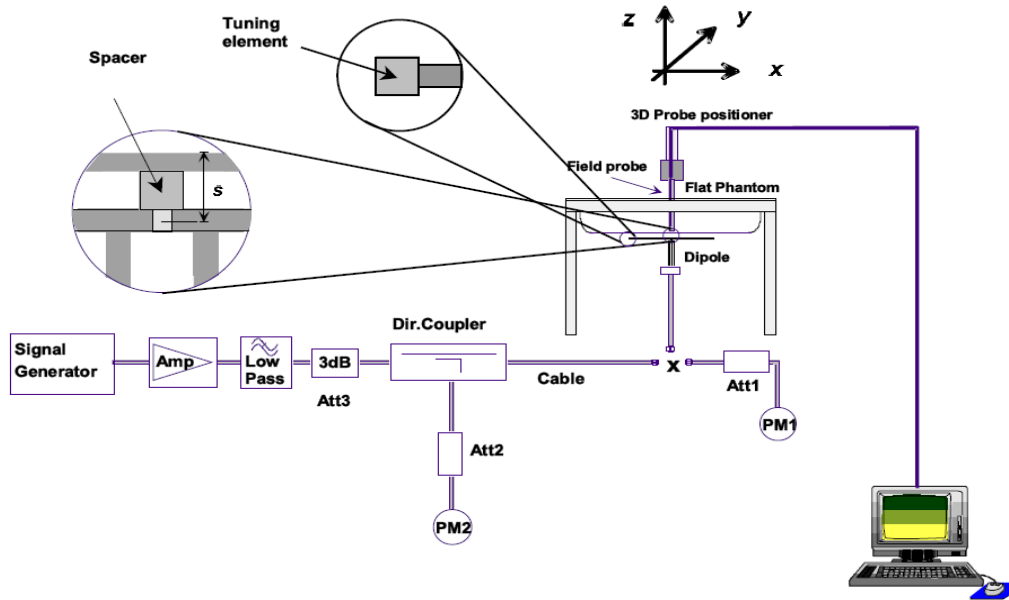
Test Engineer: Jerry hu									
Tissue Type	Measured Frequency (MHz)	Target Tissue		Measured Tissue				Liquid Temp.	Test Data
		σ	ϵ_r	σ	Dev.	ϵ_r	Dev.		
750H	750	0.99	56.57	0.95	-2.02%	57.24	1.18%	21.1	09/14/2022
835H	835	0.90	41.50	0.92	2.22%	42.82	1.81%	20.3	09/15/2022
1800H	1800	1.52	53.30	1.56	-1.32%	52.11	-2.23%	22.2	09/16/2022
1900H	1900	1.40	40.00	1.37	-2.14%	38.56	-3.60%	21.2	09/19/2022
2450H	2450	1.80	39.20	1.84	2.22%	39.70	1.28%	22.3	09/20/2022
2600H	2600	1.96	39.00	1.92	-2.04%	38.43	-1.46%	22.2	09/21/2022
5200H	5200	5.30	49.00	4.66	-0.94%	48.80	-0.41%	23.3	09/22/2022
5300H	5280	4.76	35.90	5.27	0.82%	35.95	0.14%	22.2	09/23/2022
5500H	5600	4.97	35.60	5.27	0.40%	35.68	0.22%	21.2	09/26/2022
5800H	5800	6.00	48.20	5.27	0.83%	48.46	0.54%	22.1	09/27/2022



3.9. System Check

The purpose of the system check is to verify that the system operates within its specifications at the device test frequency. The system check is simple check of repeatability to make sure that the system works correctly at the time of the compliance test;

System check results have to be equal or near the values determined during dipole calibration with the relevant liquids and test system ($\pm 10\%$).



The output power on dipole port must be calibrated to 20 dBm (100mW) before dipole is connected.



Photo of Dipole Setup



**Justification for Extended SAR Dipole Calibrations**

Referring to KDB 865664D01V01r04, if dipoles are verified in return loss (<-20dB, within 20% of prior calibration), and in impedance (within 5 ohm of prior calibration), the annual calibration is not necessary and the calibration interval can be extended. While calibration intervals not exceed 3 years.

SID750 SN 07/14 DIP 0G750-302 Extend Dipole Calibrations

Date of Measurement	Return-Loss (dB)	Delta (%)	Real Impedance (ohm)	Delta (ohm)	Imaginary Impedance (ohm)	Delta (ohm)
2021-09-29	-34.80		-20.0		1.6	

SID835 SN 07/14 DIP 0G835-303 Extend Dipole Calibrations

Date of Measurement	Return-Loss (dB)	Delta (%)	Real Impedance (ohm)	Delta (ohm)	Imaginary Impedance (ohm)	Delta (ohm)
2021-09-29	-24.49		54.9		2.8	

SID1800 SN 30/14 DIP 1G800-301 Extend Dipole Calibrations

Date of Measurement	Return-Loss (dB)	Delta (%)	Real Impedance (ohm)	Delta (ohm)	Imaginary Impedance (ohm)	Delta (ohm)
2021-09-29	-20.26		43.1		6.9	

SID1900 SN 38/18 DIP 1G900-466 Extend Dipole Calibrations

Date of Measurement	Return-Loss (dB)	Delta (%)	Real Impedance (ohm)	Delta (ohm)	Imaginary Impedance (ohm)	Delta (ohm)
2021-09-29	-26.43		50.5		4.7	

SID2450 SN 07/14 DIP 2G450-306 Extend Dipole Calibrations

Date of Measurement	Return-Loss (dB)	Delta (%)	Real Impedance (ohm)	Delta (ohm)	Imaginary Impedance (ohm)	Delta (ohm)
2021-09-29	-25.59		44.7		-1.1	

SID2600 SN 38/18 DIP 2G600-468 Extend Dipole Calibrations

Date of Measurement	Return-Loss (dB)	Delta (%)	Real Impedance (ohm)	Delta (ohm)	Imaginary Impedance (ohm)	Delta (ohm)
2021-09-29	-29.14		49.2		3.4	

SID5200 SN 49/16 DIP WGA43 Extend Dipole Calibrations

Date of Measurement	Return-Loss (dB)	Delta (%)	Real Impedance (ohm)	Delta (ohm)	Imaginary Impedance (ohm)	Delta (ohm)
2021-09-29	-8.59		19.38		13.50	

SID5300 SN 49/16 DIP WGA43 Extend Dipole Calibrations

Date of Measurement	Return-Loss (dB)	Delta (%)	Real Impedance (ohm)	Delta (ohm)	Imaginary Impedance (ohm)	Delta (ohm)
2021-09-29	-10.58		77.13		1.81	

SID5500 SN 49/16 DIP WGA43 Extend Dipole Calibrations

Date of Measurement	Return-Loss (dB)	Delta (%)	Real Impedance (ohm)	Delta (ohm)	Imaginary Impedance (ohm)	Delta (ohm)
2021-09-29	-13.39		30.95		7.75	





SID5800 SN 49/16 DIP WGA43 Extend Dipole Calibrations

Date of Measurement	Return-Loss (dB)	Delta (%)	Real Impedance (ohm)	Delta (ohm)	Imaginary Impedance (ohm)	Delta (ohm)
2021-09-29	-11.37		54.79		25.47	

Mixture Type	Frequency (MHz)	Power	SAR _{1g} (W/kg)	SAR _{10g} (W/kg)	Drift (%)	1W Target		Difference percentage		Liquid Temp	Date
						SAR _{1g} (W/kg)	SAR _{10g} (W/kg)	1g	10g		
Head	750	100 mW	0.824	0.562	1.42	8.38	5.53	-	1.67%	21.1	09/14/2022
		Normalize to 1 Watt	8.24	5.62							
Head	835	100 mW	0.923	0.639	2.03	9.60	6.20	-	3.85%	20.3	09/15/2022
		Normalize to 1 Watt	9.23	6.39							
Head	1800	100 mW	3.853	2.055	1.62	38.13	20.20	1.05%	1.73%	22.2	09/16/2022
		Normalize to 1 Watt	38.53	20.55							
Head	1900	100 mW	3.911	2.096	-1.20	40.03	20.55	-	2.30%	21.2	09/19/2022
		Normalize to 1 Watt	39.11	20.96							
Head	2450	100 mW	5.487	2.521	-0.08	53.89	24.15	1.82%	4.39%	22.3	09/20/2022
		Normalize to 1 Watt	54.87	25.21							
Head	2600	100 mW	5.747	2.246	3.14	56.91	24.69	0.98%	-	22.2	09/21/2022
		Normalize to 1 Watt	57.47	22.46							
Head	5200	100 mW	15.467	5.512	-3.02	165.77	57.2	-	-	23.3	09/22/2022
		Normalize to 1 Watt	154.67	55.12							
Head	5280	100 mW	16.456	5.731	3.21	173.2	59.22	-	-	22.2	09/23/2022
		Normalize to 1 Watt	164.56	57.31							
Head	5600	100 mW	17.225	5.972	1.00	179.61	60.98	-	-	21.2	09/26/2022
		Normalize to 1 Watt	172.25	59.72							
Head	5800	100 mW	18.293	6.177	-1.01	186.77	62.84	-	-	22.1	09/27/2022
		Normalize to 1 Watt	182.93	61.77							



3.10. SAR measurement procedure

The measurement procedures are as follows:

3.10.1 Conducted power measurement

- For WWAN power measurement, use base station simulator connection with RF cable, at maximum power in each supported wireless interface and frequency band.
- Read the WWAN RF power level from the base station simulator.
- For WLAN/BT power measurement, use engineering software to configure EUT WLAN/BT continuously Transmission, at maximum RF power in each supported wireless interface and frequency band.
- Connect EUT RF port through RF cable to the power meter, and measure WLAN/BT output power.

3.10.2 GSM Test Configuration

SAR tests for GSM 850 and GSM 1900, a communication link is set up with a System Simulator (SS) by air link. Using CMU200 the power level is set to “5” for GSM 850, set to “0” for GSM 1900. Since the GPRS class is 12 for this EUT, it has at most 4 timeslots in uplink and at most 4 timeslots in downlink, the maximum total timeslots is 5. the EGPRS class is 12 for this EUT, it has at most 4 timeslots in uplink and at most 4 timeslots in downlink, the maximum total timeslots is 5.

SAR test reduction for GPRS and EDGE modes is determined by the source-based time-averaged output power specified for production units, including tune-up tolerance. The data mode with highest specified time-averaged output power should be tested for SAR compliance in the applicable exposure conditions. For modes with the same specified maximum output power and tolerance, the higher number time-slot configuration should be tested. GSM voice and GPRS data use GMSK, which is a constant amplitude modulation with minimal peak to average power difference within the time-slot burst. For EDGE, GMSK is used for MCS 1 – MCS 4 and 8-PSK is used for MCS 5 – MCS 9; where 8-PSK has an inherently higher peak-to-average power ratio. The GMSK and 8-PSK EDGE configurations are considered separately for SAR compliance. The GMSK EDGE configurations are grouped with GPRS and considered with respect to time-averaged maximum output power to determine compliance. The 3G SAR test reduction procedure is applied to 8-PSK EDGE with GMSK GPRS/EDGE as the primary mode.

3.10.3 UMTS Test Configuration

3G SAR Test Reduction Procedure

In the following procedures, the mode tested for SAR is referred to as the primary mode. The equivalent modes considered for SAR test reduction are denoted as secondary modes. Both primary and secondary modes must be in the same frequency band. When the maximum output power and tune-up tolerance specified for production units in a secondary mode is $\leq \frac{1}{4}$ dB higher than the primary mode or when the highest reported SAR of the primary mode is scaled by the ratio of specified maximum output power and tune-up tolerance of secondary to primary mode and the adjusted SAR is ≤ 1.2 W/kg, SAR measurement is not required for the secondary mode. This is referred to as the 3G SAR test reduction procedure in the following SAR test guidance, where the primary mode is identified in the applicable wireless mode test procedures and the secondary mode is wireless mode being considered for SAR test reduction by that procedure. When the 3G SAR test reduction procedure is not satisfied, it is identified as “otherwise” in the applicable procedures; SAR measurement is required for the secondary mode.

Output power Verification

Maximum output power is verified on the high, middle and low channels according to procedures described in section 5.2 of 3GPP TS 34.121, using the appropriate RMC or AMR with TPC (transmit power control) set to all “1’s” for WCDMA/HSDPA or by applying the required inner loop power control procedures to maintain maximum output power while HSUPA is active. Results for all applicable physical channel configurations (DPCCH, DPDCHn and spreading codes, HSDPA, HSPA) are required in the SAR report. All configurations that are not supported by the handset or cannot be measured due to technical or equipment limitations must be clearly identified.

Head SAR

SAR for next to the ear head exposure is measured using a 12.2 kbps RMC with TPC bits configured to all “1’s”. The 3G SAR test reduction procedure is applied to AMR configurations with 12.2 kbps RMC as the primary mode. Otherwise, SAR is measured for 12.2 kbps AMR in 3.4 kbps SRB (signaling radio bearer) using the highest reported SAR configuration in 12.2 kbps RMC for head exposure.



1) Body-Worn Accessory SAR

SAR for body-worn accessory configurations is measured using a 12.2 kbps RMC with TPC bits configured to all “1’s”. The 3G SAR test reduction procedure is applied to other spreading codes and multiple DPDCHn configurations supported by the handset with 12.2 kbps RMC as the primary mode. Otherwise, SAR is measured using an applicable RMC configuration with the corresponding spreading code or DPDCHn, for the highest reported body-worn accessory exposure SAR configuration in 12.2 kbps RMC. When more than 2 DPDCHn are supported by the handset, it may be necessary to configure additional DPDCHn using FTM (Factory Test Mode) or other chipset based test approaches with parameters similar to those used in 384 kbps and 768 kbps RMC.

2) Handsets with Release 5 HSDPA

The 3G SAR test reduction procedure is applied to HSDPA body-worn accessory configurations with 12.2 kbps RMC as the primary mode. Otherwise, SAR is measured for HSDPA using the HSDPA body SAR procedures in the “Release 5 HSDPA Data Devices” section of this document, for the highest reported SAR body-worn accessory exposure configuration in 12.2 kbps RMC. Handsets with both HSDPA and HSUPA are tested according to Release 6 HSPA test procedures.

HSDPA should be configured according to the UE category of a test device. The number of HSDSCH/ HS-PDSCHs, HARQ processes, minimum inter-TTI interval, transport block sizes and RV coding sequence are defined by the H-set. To maintain a consistent test configuration and stable transmission conditions, QPSK is used in the H-set for SAR testing. HS-DPCCH should be configured with a CQI feedback cycle of 4 ms with a CQI repetition factor of 2 to maintain a constant rate of active CQI slots. DPCCH and DPDCH gain factors (β_c , β_d), and HS-DPCCH power offset parameters (Δ_{ACK} , Δ_{NACK} , Δ_{CQI}) should be set according to values indicated in the Table below. The CQI value is determined by the UE category, transport block size, number of HS-PDSCHs and modulation used in the H-set

Table 2: Subtests for UMTS Release 5 HSDPA

Sub-set	β_c	β_d	β_d (SF)	β_c/β_d	β_{hs} (note 1, note 2)	CM(dB) (note 3)	MPR(dB)
1	2/15	15/15	64	2/15	4/15	0.0	0.0
2	12/15 (note 4)	15/15 (note 4)	64	12/15 (note 4)	24/15	1.0	0.0
3	15/15	8/15	64	15/8	30/15	1.5	0.5
4	15/15	4/15	64	15/4	30/15	1.5	0.5

Note1: Δ_{ACK} , Δ_{NACK} and $\Delta_{CQI} = 8 \Leftrightarrow A_{hs} = \beta_{hs}/\beta_c = 30/15 \Leftrightarrow \beta_{hs} = 30/15 * \beta_c$
 Note2: CM=1 for $\beta_c/\beta_d = 12/15$, $\beta_{hs}/\beta_c = 24/15$.
 Note3: For subtest 2 the β_c/β_d ratio of 12/15 for the TFC during the measurement period (TF1, TF0) is achieved by setting the signaled gain factors for the reference TFC (TFC1, TF1) to $\beta_c = 11/15$ and $\beta_d = 15/15$.

HSUPA Test Configuration

The 3G SAR test reduction procedure is applied to HSPA (HSUPA/HSDPA with RMC) body-worn accessory configurations with 12.2 kbps RMC as the primary mode. Otherwise, SAR is measured for HSPA using the HSPA body SAR procedures in the “Release 6 HSPA Data Devices” section of this document, for the highest reported body-worn accessory exposure SAR configuration in 12.2 kbps RMC. When VOIP is applicable for next to the ear head exposure in HSPA, the 3G SAR test reduction procedure is applied to HSPA with 12.2 kbps RMC as the primary mode; otherwise, the same HSPA configuration used for body-worn accessory measurements is tested for next to the ear head exposure.

Due to inner loop power control requirements in HSPA, a communication test set is required for output power and SAR tests. The 12.2 kbps RMC, FRC H-set 1 and E-DCH configurations for HSPA are configured according to the β values indicated in Table 2 and other applicable procedures described in the ‘WCDMA Handset’ and ‘Release 5 HSDPA Data Devices’ sections of this document

Table 3: Sub-Test 5 Setup for Release 6 HSUPA

Sub-set	β_c	β_d	β_d (SF)	β_c/β_d	$\beta_{hs}^{(1)}$	β_{ec}	β_{ed}	β_{ed} (SF)	β_{ed} (codes)	CM ⁽²⁾ (dB)	MPR (dB)	AG ⁽⁴⁾ Index	E-TFCI
1	11/15 ⁽³⁾	15/15 ⁽³⁾	64	11/15 ⁽³⁾	22/15	209/225	1039/225	4	1	1.0	0.0	20	75





2	6/15	15/15	64	6/15	12/15	12/15	94/75	4	1	3.0	2.0	12	67
3	15/15	9/15	64	15/9	30/15	30/15	$\beta_{ed1} 47/15$ $\beta_{ed2} 47/15$	4	2	2.0	1.0	15	92
4	2/15	15/15	64	2/15	4/15	2/15	56/75	4	1	3.0	2.0	17	71
5	15/15 ⁽⁴⁾	15/15 ⁽⁴⁾	64	15/15 ⁽⁴⁾	30/15	24/15	134/15	4	1	1.0	0.0	21	81

Note 1: Δ_{ACK} , Δ_{NACK} and $\Delta_{CQI} = 8 \Leftrightarrow A_{hs} = \beta_{hs}/\beta_c = 30/15 \Leftrightarrow \beta_{hs} = 30/15 * \beta_c$.

Note 2: CM = 1 for $\beta_c/\beta_d = 12/15$, $\beta_{hs}/\beta_c = 24/15$. For all other combinations of DPDCH, DPCCH, HS-DPCCH, E-DPDCH and E-DPCCH the MPR is based on the relative CM difference.

Note 3: For subtest 1 the β_c/β_d ratio of 11/15 for the TFC during the measurement period (TF1, TF0) is achieved by setting the signaled gain factors for the reference TFC (TF1, TF1) to $\beta_c = 10/15$ and $\beta_d = 15/15$.

Note 4: For subtest 5 the β_c/β_d ratio of 15/15 for the TFC during the measurement period (TF1, TF0) is achieved by setting the signaled gain factors for the reference TFC (TF1, TF1) to $\beta_c = 14/15$ and $\beta_d = 15/15$.

Note 5: Testing UE using E-DPDCH Physical Layer category 1 Sub-test 3 is not required according to TS 25.306 Figure 5.1g.

Note 6: β_d can not be set directly; it is set by Absolute Grant Value.

3.10.4 WIFI Test Configuration

The SAR measurement and test reduction procedures are structured according to either the DSSS or OFDM transmission mode configurations used in each standalone frequency band and aggregated band. For devices that operate in exposure configurations that require multiple test positions, additional SAR test reduction may be applied. The maximum output power specified for production units, including tune-up tolerance, are used to determine initial SAR test requirements for the 802.11 transmission modes in a frequency band. SAR is measured using the highest measured maximum output power channel for the initial test configuration. SAR measurement and test reduction for the remaining 802.11 modes and test channels are determined according to measured or specified maximum output power and reported SAR of the initial measurements. The general test reduction and SAR measurement approaches are summarized in the following:

1. The maximum output power specified for production units are determined for all applicable 802.11 transmission modes in each standalone and aggregated frequency band. Maximum output power is measured for the highest maximum output power configuration(s) in each frequency band according to the default power measurement procedures.
2. For OFDM transmission configurations in the 2.4 GHz and 5 GHz bands, an "initial test configuration" is first determined for each standalone and aggregated frequency band according to the maximum output power and tune-up tolerance specified for production units.
 - a. When the same maximum power is specified for multiple transmission modes in a frequency band, the largest channel bandwidth, lowest order modulation, lowest data rate and lowest order 802.11a/g/n/ac mode is used for SAR measurement, on the highest measured output power channel in the initial test configuration, for each frequency band.
 - b. SAR is measured for OFDM configurations using the initial test configuration procedures. Additional frequency band specific SAR test reduction may be considered for individual frequency bands
 - c. Depending on the reported SAR of the highest maximum output power channel tested in the initial test configuration, SAR test reduction may apply to subsequent highest output channels in the initial test configuration to reduce the number of SAR measurements.
3. The Initial test configuration does not apply to DSSS. The 2.4 GHz band SAR test requirements and 802.11b DSSS procedures are used to establish the transmission configurations required for SAR measurement.
4. An "initial test position" is applied to further reduce the number of SAR tests for devices operating in next to the ear, UMPC mini-tablet or hotspot mode exposure configurations that require multiple test positions.
 - a. SAR is measured for 802.11b according to the 2.4 GHz DSSS procedure using the exposure condition established by the initial test position.
 - b. SAR is measured for 2.4 GHz and 5 GHz OFDM configurations using the initial test configuration. 802.11b/g/n operating modes are tested independently according to the service requirements in each frequency band. 802.11b/g/n modes are tested on the maximum average output channel.
5. The Initial test position does not apply to devices that require a fixed exposure test position. SAR is measured in a fixed exposure test position for these devices in 802.11b according to the 2.4 GHz DSSS procedure or in 2.4 GHz and 5 GHz OFDM configurations using the initial test configuration procedures.



6. The “subsequent test configuration” procedures are applied to determine if additional SAR measurements are required for the remaining OFDM transmission modes that have not been tested in the initial test configuration. SAR test exclusion is determined according to reported SAR in the initial test configuration and maximum output power specified or measured for these other OFDM configurations.

2.4 GHz and 5GHz SAR Procedures

Separate SAR procedures are applied to DSSS and OFDM configurations in the 2.4 GHz band to simplify DSSS test requirements. For 802.11b DSSS SAR measurements, DSSS SAR procedure applies to fixed exposure test position and initial test position procedure applies to multiple exposure test positions. When SAR measurement is required for an OFDM configuration, the initial test configuration, subsequent test configuration and initial test position procedures are applied. The SAR test exclusion requirements for 802.11g/n OFDM configurations are described in section 5.2.2.

1. 802.11b DSSS SAR Test Requirements

SAR is measured for 2.4 GHz 802.11b DSSS using either a fixed test position or, when applicable, the initial test position procedure. SAR test reduction is determined according to the following:

- a. When the reported SAR of the highest measured maximum output power channel (section 3.1) for the exposure configuration is ≤ 0.8 W/kg, no further SAR testing is required for 802.11b DSSS in that exposure configuration.
- b. When the reported SAR is > 0.8 W/kg, SAR is required for that exposure configuration using the next highest measured output power channel. When any reported SAR is > 1.2 W/kg, SAR is required for the third channel; i.e., all channels require testing.

1. 2.4 GHz 802.11g/n OFDM SAR Test Exclusion Requirements

When SAR measurement is required for 2.4 GHz 802.11g/n OFDM configurations, the measurement and test reduction procedures for OFDM are applied (section 5.3). SAR is not required for the following 2.4 GHz OFDM conditions.

- a. When KDB Publication 447498 SAR test exclusion applies to the OFDM configuration
- b. When the highest reported SAR for DSSS is adjusted by the ratio of OFDM to DSSS specified maximum output power and the adjusted SAR is ≤ 1.2 W/kg.

2. SAR Test Requirements for OFDM Configurations

When SAR measurement is required for 802.11 a/g/n/ac OFDM configurations, each standalone and frequency aggregated band is considered separately for SAR test reduction. When the same transmitter and antenna(s) are used for U-NII-1 and U-NII-2A bands, additional SAR test reduction applies. When band gap channels between U-NII-2C band and 5.8 GHz U-NII-3 or §15.247 band are supported, the highest maximum output power transmission mode configuration and maximum output power channel across the bands must be used to determine SAR test reduction, according to the initial test configuration and subsequent test configuration requirements.²⁰ In applying the initial test configuration and subsequent test configuration procedures, the 802.11 transmission configuration with the highest specified maximum output power and the channel within a test configuration with the highest measured maximum output power should be clearly distinguished to apply the procedures.

3. OFDM Transmission Mode SAR Test Configuration and Channel Selection Requirements

The initial test configuration for 2.4 GHz and 5 GHz OFDM transmission modes is determined by the 802.11 configuration with the highest maximum output power specified for production units, including tune-up tolerance, in each standalone and aggregated frequency band. SAR for the initial test configuration is measured using the highest maximum output power channel determined by the default power measurement procedures (section 4). When multiple configurations in a frequency band have the same specified maximum output power, the initial test configuration is determined according to the following steps applied sequentially.

- a. The largest channel bandwidth configuration is selected among the multiple configurations with the same specified maximum output power.
- b. If multiple configurations have the same specified maximum output power and largest channel bandwidth, the lowest order modulation among the largest channel bandwidth configurations is selected.
- c. If multiple configurations have the same specified maximum output power, largest channel bandwidth and lowest order modulation, the lowest data rate configuration among these configurations is selected.
- d. When multiple transmission modes (802.11a/g/n/ac) have the same specified maximum output power, largest channel bandwidth, lowest order modulation and lowest data rate, the lowest order 802.11 mode is selected; i.e., 802.11a is chosen over 802.11n then 802.11ac or 802.11g is chosen over 802.11n.

After an initial test configuration is determined, if multiple test channels have the same measured maximum output power, the channel chosen for SAR measurement is determined according to the following. These



channel selection procedures apply to both the initial test configuration and subsequent test configuration(s), with respect to the default power measurement procedures or additional power measurements required for further SAR test reduction. The same procedures also apply to subsequent highest output power channel(s) selection.

- a. Channels with measured maximum output power within $\frac{1}{4}$ dB of each other are considered to have the same maximum output.
- b. When there are multiple test channels with the same measured maximum output power, the channel closest to mid-band frequency is selected for SAR measurement.
- c. When there are multiple test channels with the same measured maximum output power and equal separation from mid-band frequency; for example, high and low channels or two mid-band channels, the higher frequency (number) channel is selected for SAR measurement.

Initial Test Configuration Procedures

An initial test configuration is determined for OFDM transmission modes according to the channel bandwidth, modulation and data rate combination(s) with the highest maximum output power specified for production units in each standalone and aggregated frequency band. SAR is measured using the highest measured maximum output power channel. For configurations with the same specified or measured maximum output power, additional transmission mode and test channel selection procedures are required (see section 5.3.2). SAR test reduction of subsequent highest output test channels is based on the reported SAR of the initial test configuration.

For next to the ear, hotspot mode and UMC mini-tablet exposure configurations where multiple test positions are required, the initial test position procedure is applied to minimize the number of test positions required for SAR measurement using the initial test configuration transmission mode.²³ For fixed exposure conditions that do not have multiple SAR test positions, SAR is measured in the transmission mode determined by the initial test configuration. When the reported SAR of the initial test configuration is > 0.8 W/kg, SAR measurement is required for the subsequent next highest measured output power channel(s) in the initial test configuration until the reported SAR is ≤ 1.2 W/kg or all required channels are tested.

4. Subsequent Test Configuration Procedures

SAR measurement requirements for the remaining 802.11 transmission mode configurations that have not been tested in the initial test configuration are determined separately for each standalone and aggregated frequency band, in each exposure condition, according to the maximum output power specified for production units. The initial test position procedure is applied to next to the ear, UMPC mini-tablet and hotspot mode configurations. When the same maximum output power is specified for multiple transmission modes, the procedures in section 5.3.2 are applied to determine the test configuration. Additional power measurements may be required to determine if SAR measurements are required for subsequent highest output power channels in a subsequent test configuration. The subsequent test configuration and SAR measurement procedures are described in the following.

- a. When SAR test exclusion provisions of KDB Publication 447498 are applicable and SAR measurement is not required for the initial test configuration, SAR is also not required for the next highest maximum output power transmission mode subsequent test configuration(s) in that frequency band or aggregated band and exposure configuration.
- b. When the highest reported SAR for the initial test configuration (when applicable, include subsequent highest output channels), according to the initial test position or fixed exposure position requirements, is adjusted by the ratio of the subsequent test configuration to initial test configuration specified maximum output power and the adjusted SAR is ≤ 1.2 W/kg, SAR is not required for that subsequent test configuration.
- c. The number of channels in the initial test configuration and subsequent test configuration can be different due to differences in channel bandwidth. When SAR measurement is required for a subsequent test configuration and the channel bandwidth is smaller than that in the initial test configuration, all channels in the subsequent test configuration that overlap with the larger bandwidth channel tested in the initial test configuration should be used to determine the highest maximum output power channel. This step requires additional power measurement to identify the highest maximum output power channel in the subsequent test configuration to determine SAR test reduction.
 - 1). SAR should first be measured for the channel with highest measured output power in the subsequent test configuration.
 - 2). SAR for subsequent highest measured maximum output power channels in the subsequent test configuration is required only when the reported SAR of the preceding higher maximum output power channel(s) in the subsequent test configuration is > 1.2 W/kg or until all required channels are tested.





- a) For channels with the same measured maximum output power, SAR should be measured using the channel closest to the center frequency of the larger channel bandwidth channel in the initial test configuration.
- d. SAR measurements for the remaining highest specified maximum output power OFDM transmission mode configurations that have not been tested in the initial test configuration (highest maximum output) or subsequent test configuration(s) (subsequent next highest maximum output power) is determined by applying the subsequent test configuration procedures in this section to the remaining configurations according to the following:
 - 1) replace “subsequent test configuration” with “next subsequent test configuration” (i.e., subsequent next highest specified maximum output power configuration)
 - 2) replace “initial test configuration” with “all tested higher output power configurations.”

3.11. Power Reduction

The product without any power reduction.

3.12. Power Drift

To control the output power stability during the SAR test, SAR system calculates the power drift by measuring the E-field at the same location at the beginning and at the end of the measurement for each test position. This ensures that the power drift during one measurement is within 5%.



4. TEST CONDITIONS AND RESULTS

4.1. Conducted Power Results

According KDB 447498D01 General RF Exposure Guidance v06 Section 4.1 2) states that “Unless it is specified differently in the published RF exposure KDB procedures, these requirements also apply to test reduction and test exclusion considerations. Time-averaged maximum conducted output power applies to SAR and, as required by § 2.1091(c), time-averaged ERP applies to MPE. When an antenna port is not available on the device to support conducted power measurement, such as FRS and certain Part 15 transmitters with built-in integral antennas, the maximum output power allowed for production units should be used to determine RF exposure test exclusion and compliance.”

<GSM Conducted Power>

General Note:

1. Per KDB 447498 D01v06, the maximum output power channel is used for SAR testing and for further SAR test reduction.
2. According to October 2013TCB Workshop, for GSM / GPRS / EGPRS, the number of time slots to test for SAR should correspond to the highest frame-average maximum output power configuration, considering the possibility of e.g. 3rd party VoIP operation for head and body-worn SAR testing, the EUT was set in GPRS (4Tx slot) for GSM850/GSM1900 band due to their highest frame-average power.
3. For hotspot mode SAR testing, GPRS should be evaluated, therefore the EUT was set in GPRS (4 Tx slots) for GSM850/GSM1900 band due to its highest frame-average power.

Conducted power measurement results for GSM850/PCS1900

GSM 850		Tune-up	Burst Conducted power (dBm)			Division Factors	Tune-up	Average power (dBm)		
			Channel/Frequency(MHz)					Channel/Frequency(MHz)		
		Max	128/824.2	190/836.6	251/848.8		Max	128/824.2	190/836.6	251/848.8
GSM		32.50	32.40	32.43	32.38	-9.03dB	23.47	23.37	23.40	23.35
GPRS (GMSK)	1TX slot	32.50	32.31	32.29	32.31	-9.03dB	23.47	23.28	23.26	23.28
	2TX slot	31.50	30.99	31.01	31.03	-6.02dB	25.48	24.97	24.99	25.01
	3TX slot	30.00	29.49	29.52	29.51	-4.26dB	25.74	25.23	25.26	25.25
	4TX slot	28.50	28.01	27.98	27.99	-3.01dB	25.49	25.00	24.97	24.98
EGPRS (8PSK)	1TX slot	26.50	25.98	26.00	26.03	-9.03dB	17.47	16.95	16.97	17.00
	2TX slot	25.00	24.51	24.52	24.48	-6.02dB	18.98	18.49	18.50	18.46
	3TX slot	23.00	22.98	23.00	23.00	-4.26dB	18.74	18.72	18.74	18.74
	4TX slot	22.00	21.51	21.49	21.49	-3.01dB	18.99	18.50	18.48	18.48
GSM 1900		Tune-up	Burst Conducted power (dBm)			Division Factors	Tune-up	Average power (dBm)		
			Channel/Frequency(MHz)					Channel/Frequency(MHz)		
		Max	512/1850.2	661/1880	810/1909.8		Max.	512/1850.2	661/1880	810/1909.8
GSM		29.50	29.48	29.45	29.45	-9.03dB	20.47	20.45	20.42	20.42
GPRS (GMSK)	1TX slot	29.50	29.40	29.40	29.42	-9.03dB	20.47	20.37	20.37	20.39
	2TX slot	28.50	27.99	28.03	28.03	-6.02dB	22.48	21.97	22.01	22.01
	3TX slot	27.00	26.53	26.51	26.52	-4.26dB	22.74	22.27	22.25	22.26
	4TX slot	25.50	24.99	25.02	25.02	-3.01dB	22.49	21.98	22.01	22.01
EGPRS (8PSK)	1TX slot	26.00	25.51	25.51	25.51	-9.03dB	16.97	16.48	16.48	16.48
	2TX slot	24.00	23.99	23.98	23.98	-6.02dB	17.98	17.97	17.96	17.96
	3TX slot	23.00	22.50	22.52	22.50	-4.26dB	18.74	18.24	18.26	18.24
	4TX slot	21.50	20.99	20.98	21.02	-3.01dB	18.49	17.98	17.97	18.01

Notes:

1. Division Factors

To average the power, the division factor is as follows:

1TX-slot = 1 transmit time slot out of 8 time slots=> conducted power divided by (8/1) => -9.00dB

2TX-slots = 2 transmit time slots out of 8 time slots=> conducted power divided by (8/2) => -6.00dB

3TX-slots = 3 transmit time slots out of 8 time slots=> conducted power divided by (8/3) => -4.26dB



4TX-slots = 4 transmit time slots out of 8 time slots=> conducted power divided by (8/4) => -3.00dB
 2. According to the conducted power as above, the GPRS measurements are performed with 3Txslot for GPRS850 and 3Txslot GPRS1900.

<UMTS Conducted Power>

The following tests were conducted according to the test requirements outlines in 3GPP TS 34.121 specification. A summary of these settings are illustrated below:

HSDPA Setup Configuration:

- a. The EUT was connected to Base Station E5515C referred to the Setup Configuration.
- b. The RF path losses were compensated into the measurements.
- c. A call was established between EUT and Base Station with following setting:
 - i. Set Gain Factors (β_c and β_d) and parameters were set according to each
 - ii. Specific sub-test in the following table, C10.1.4, quoted from the TS 34.121
 - iii. Set RMC 12.2Kbps + HSDPA mode.
 - iv. Set Cell Power = -86 dBm
 - v. Set HS-DSCH Configuration Type to FRC (H-set 1, QPSK)
 - vi. Select HSDPA Uplink Parameters
 - vii. Set Delta ACK, Delta NACK and Delta CQI = 8
 - viii. Set Ack-Nack Repetition Factor to 3
 - ix. Set CQI Feedback Cycle (k) to 4 ms
 - x. Set CQI Repetition Factor to 2
 - xi. Power Ctrl Mode = All Up bits
- d. The transmitted maximum output power was recorded.

Table C.10.1.4: β values for transmitter characteristics tests with HS-DPCCH

Sub-test	β_c	β_d	β_d (SF)	β_c/β_d	β_{HS} (Note 1, Note 2)	CM (dB) (Note 3)	MPR (dB) (Note 3)
1	2/15	15/15	64	2/15	4/15	0.0	0.0
2	12/15 (Note 4)	15/15 (Note 4)	64	12/15 (Note 4)	24/15	1.0	0.0
3	15/15	8/15	64	15/8	30/15	1.5	0.5
4	15/15	4/15	64	15/4	30/15	1.5	0.5

Note 1: $\Delta_{ACK}, \Delta_{NACK}$ and $\Delta_{CQI} = 30/15$ with $\beta_{HS} = 30/15 * \beta_c$.

Note 2: For the HS-DPCCH power mask requirement test in clause 5.2C, 5.7A, and the Error Vector Magnitude (EVM) with HS-DPCCH test in clause 5.13.1A, and HSDPA EVM with phase discontinuity in clause 5.13.1AA, Δ_{ACK} and $\Delta_{NACK} = 30/15$ with $\beta_{HS} = 30/15 * \beta_c$, and $\Delta_{CQI} = 24/15$ with $\beta_{HS} = 24/15 * \beta_c$.

Note 3: CM = 1 for $\beta_c/\beta_d = 12/15, \beta_{HS}/\beta_c = 24/15$. For all other combinations of DPDCCH, DPCCH and HS-DPCCH the MPR is based on the relative CM difference. This is applicable for only UEs that support HSDPA in release 6 and later releases.

Note 4: For subtest 2 the β_c/β_d ratio of 12/15 for the TFC during the measurement period (TF1, TF0) is achieved by setting the signalled gain factors for the reference TFC (TF1, TF1) to $\beta_c = 11/15$ and $\beta_d = 15/15$.

Setup Configuration

HSUPA Setup Configuration:

- a. The EUT was connected to Base Station R&S CMU200 referred to the Setup Configuration.
- b. The RF path losses were compensated into the measurements.
- c. A call was established between EUT and Base Station with following setting * :
 - i. Call Configs = 5.2B, 5.9B, 5.10B, and 5.13.2B with QPSK
 - ii. Set the Gain Factors (β_c and β_d) and parameters (AG Index) were set according to each specific sub-test in the following table, C11.1.3, quoted from the TS 34.121
 - iii. Set Cell Power = -86 dBm
 - iv. Set Channel Type = 12.2k + HSPA
 - v. Set UE Target Power
 - vi. Power Ctrl Mode= Alternating bits
 - vii. Set and observe the E-TFCI





- viii. Confirm that E-TFCI is equal to the target E-TFCI of 75 for sub-test 1, and other subtest's E-TFCI
- d. The transmitted maximum output power was recorded.

Table C.11.1.3: β values for transmitter characteristics tests with HS-DPCCH and E-DCH

Sub-test	β_c	β_d	β_d (SF)	β_c/β_d	β_{HS} (Note 1)	β_{ec}	β_{ed} (Note 5) (Note 6)	β_{ed} (SF)	β_{ed} (Codes)	CM (dB) (Note 2)	MPR (dB) (Note 2)	AG Index (Note 6)	E-TFCI
1	11/15 (Note 3)	15/15 (Note 3)	64	11/15 (Note 3)	22/15	209/25	1309/225	4	1	1.0	0.0	20	75
2	6/15	15/15	64	6/15	12/15	12/15	94/75	4	1	3.0	2.0	12	67
3	15/15	9/15	64	15/9	30/15	30/15	β_{ed1} : 47/15 β_{ed2} : 47/15	4 4	2	2.0	1.0	15	92
4	2/15	15/15	64	2/15	4/15	2/15	56/75	4	1	3.0	2.0	17	71
5	15/15 (Note 4)	15/15 (Note 4)	64	15/15 (Note 4)	30/15	24/15	134/15	4	1	1.0	0.0	21	81

Note 1: $\Delta_{ACK}, \Delta_{NACK}$ and $\Delta_{CQI} = 30/15$ with $\beta_{HS} = 30/15 * \beta_c$.

Note 2: CM = 1 for $\beta_c/\beta_d = 12/15, \beta_{HS}/\beta_c = 24/15$. For all other combinations of DPDCH, DPCCH, HS-DPCCH, E-DPDCH and E-DPCCH the MPR is based on the relative CM difference.

Note 3: For subtest 1 the β_c/β_d ratio of 11/15 for the TFC during the measurement period (TF1, TF0) is achieved by setting the signalled gain factors for the reference TFC (TF1, TF1) to $\beta_c = 10/15$ and $\beta_d = 15/15$.

Note 4: For subtest 5 the β_c/β_d ratio of 15/15 for the TFC during the measurement period (TF1, TF0) is achieved by setting the signalled gain factors for the reference TFC (TF1, TF1) to $\beta_c = 14/15$ and $\beta_d = 15/15$.

Note 5: In case of testing by UE using E-DPDCH Physical Layer category 1, Sub-test 3 is omitted according to TS25.306 Table 5.1g.

Note 6: β_{ed} can not be set directly, it is set by Absolute Grant Value.

General Note

1. Per KDB 941225 D01, RMC 12.2kbps setting is used to evaluate SAR. If AMR 12.2kbps power is < 0.25dB higher than RMC 12.2kbps, SAR tests with AMR 12.2kbps can be excluded.
2. By design, AMR and HSDPA/HSUPA RF power will not be larger than RMC 12.2kbps, detailed information is included in Tune-up Procure exhibit.
3. It is expected by the manufacturer that MPR for some HSDPA/HSUPA subtests may differ from the specification of 3GPP, according to the chipset implementation in this model. The implementation and expected deviation are detailed in tune-up procedure exhibit.

Conducted Power Measurement Results(WCDMA Band II/ IV /V)

Item	Band	FDD Band V result (dBm)			FDD Band IV result (dBm)			FDD Band II result (dBm)		
		Test Channel			Test Channel			Test Channel		
		4132/826.4	4183/836.6	4233/846.6	1312/1712.4	1413/1732.6	1513/1752.6	9262/1852.4	9400/1880	9538/1907.6
RMC	12.2kbps	22.72	22.87	22.74	23.25	23.27	23.37	23.29	23.34	23.25
HSDPA	Subtest 1	22.42	22.75	22.64	22.46	22.64	22.63	22.76	22.75	22.55
	Subtest 2	22.66	22.69	22.71	22.57	22.50	22.58	22.51	22.52	22.69
	Subtest 3	22.49	22.73	22.59	22.46	22.56	22.52	22.57	22.47	22.54
	Subtest 4	22.64	22.60	22.57	22.36	22.53	22.61	22.43	22.71	22.45
HSUPA	Subtest 1	22.51	22.58	22.45	22.39	22.59	22.58	22.52	22.47	22.47
	Subtest 2	22.46	22.74	22.54	22.41	22.85	22.63	22.49	22.59	22.26
	Subtest 3	22.51	22.69	22.50	22.62	22.60	22.37	22.63	22.64	22.46
	Subtest 4	21.66	21.88	21.75	22.37	22.48	22.39	22.42	22.35	22.30
	Subtest 5	21.59	21.68	21.51	21.74	21.08	21.79	21.54	21.77	21.45

Note:1. When the maximum output power and tune-up tolerance specified for production units in a secondary mode is $\leq 1/2$ dB higher than the primary mode (RMC12.2kbps) or when the highest reported SAR of the primary mode is scaled by the ratio of specified maximum output power and tune-up tolerance of secondary to primary mode and the adjusted SAR is ≤ 1.2 W/kg, SAR measurement is not required for the secondary mode.





LTE Band2

BW (MHz)	Frequency (MHz)	RB Configuration		Average Power [dBm]	
		Size	Offset	QPSK	16QAM
1.4	1850.7	1	0	20.90	19.69
		1	2	21.11	19.94
		1	5	20.93	19.73
		3	0	20.97	19.73
		3	1	20.99	19.69
		3	3	20.95	19.65
		6	0	20.07	18.98
	1880.0	1	0	20.76	19.60
		1	2	21.01	19.79
		1	5	20.80	19.57
		3	0	20.79	19.56
		3	1	20.79	19.59
		3	3	20.74	19.60
		6	0	19.90	18.82
	1909.3	1	0	20.38	19.09
		1	2	20.49	19.23
		1	5	20.38	19.12
		3	0	20.40	19.20
		3	1	20.39	19.19
		3	3	20.39	19.20
		6	0	19.45	18.23
3	1851.5	1	0	22.06	20.98
		1	8	22.07	20.99
		1	14	22.10	21.02
		8	0	21.08	20.03
		8	4	21.07	19.98
		8	7	21.13	20.05
		15	0	20.99	20.02
	1880.0	1	0	21.94	20.93
		1	8	21.93	20.89
		1	14	21.91	20.85
		8	0	21.01	19.95
		8	4	21.03	19.96
		8	7	21.00	19.91
		15	0	20.95	19.92
	1908.5	1	0	21.64	20.40
		1	8	21.61	20.34
		1	14	21.63	20.32
		8	0	20.61	19.51
		8	4	20.59	19.54
		8	7	20.55	19.48
		15	0	20.48	19.38
5	1852.5	1	0	22.05	20.89
		1	12	22.22	21.02
		1	24	22.18	21.01
		12	0	20.94	19.86
		12	6	20.96	19.92
		12	13	21.05	19.97
		25	0	21.03	19.97
	1880.0	1	0	21.93	20.85
		1	12	22.02	20.89
		1	24	21.92	20.83
		12	0	20.91	19.88
		12	6	20.90	19.83





	1907.5	12	13	20.87	19.83
		25	0	20.90	19.90
		1	0	21.52	20.56
		1	12	21.61	20.58
		1	24	21.49	20.54
		12	0	20.54	19.49
		12	6	20.52	19.52
		12	13	20.44	19.41
		25	0	20.47	19.47
10	1855.0	1	0	21.03	19.94
		1	24	21.13	20.19
		1	49	21.10	20.11
		25	0	19.98	18.91
		25	12	19.99	18.92
		25	25	20.05	19.00
		50	0	20.02	18.95
	1880.0	1	0	20.78	19.84
		1	24	20.77	19.70
		1	49	20.34	19.46
		25	0	19.56	18.51
		25	12	19.64	18.42
		25	25	19.25	18.22
		50	0	19.68	18.48
	1905.0	1	0	20.08	18.97
		1	24	20.10	18.93
		1	49	19.94	18.66
		25	0	18.90	17.93
		25	12	18.94	17.92
		25	25	18.81	17.80
		50	0	18.84	17.89
15	1857.5	1	0	20.97	19.91
		1	38	21.15	20.10
		1	74	21.02	20.03
		37	0	19.91	19.91
		37	18	20.14	20.13
		37	37	20.02	19.92
		75	0	20.18	19.06
	1880.0	1	0	20.88	19.68
		1	38	20.37	19.53
		1	74	20.35	19.34
		37	0	19.39	19.48
		37	18	19.35	19.30
		37	37	19.16	19.16
		75	0	19.40	18.43
	1902.5	1	0	19.99	19.20
1		38	20.04	19.11	
1		74	19.75	18.86	
37		0	19.11	19.15	
37		18	19.10	19.14	
37		37	18.84	18.82	
75		0	19.05	18.02	
20	1860.0	1	0	20.86	19.66
		1	49	21.28	20.14
		1	99	20.87	19.74
		50	0	20.11	19.08
		50	25	20.10	19.12
		50	50	20.13	19.18
		100	0	20.21	19.18





	1880.0	1	0	20.67	19.34
		1	49	20.79	19.35
		1	99	20.04	18.97
		50	0	19.62	18.77
		50	25	19.68	18.56
		50	50	19.33	18.25
		100	0	19.42	18.57
	1900.0	1	0	20.04	19.12
		1	49	20.28	19.31
		1	99	19.71	18.75
		50	0	19.15	18.26
		50	25	19.15	18.18
		50	50	19.08	18.06
		100	0	19.14	18.12

LTE Band4

BW (MHz)	Frequency (MHz)	RB Configuration		Average Power [dBm]	
		Size	Offset	QPSK	16QAM
1.4	1710.7	1	0	20.42	19.36
		1	2	20.61	19.50
		1	5	20.46	19.36
		3	0	20.55	19.37
		3	1	20.53	19.40
		3	3	20.54	19.37
		6	0	19.48	18.52
	1732.5	1	0	20.72	19.65
		1	2	20.79	19.87
		1	5	20.65	19.65
		3	0	20.84	19.66
		3	1	20.86	19.67
		3	3	20.84	19.60
		6	0	19.76	18.79
	1754.3	1	0	20.64	19.37
		1	2	20.62	19.50
		1	5	20.63	19.37
		3	0	20.62	19.49
		3	1	20.64	19.46
		3	3	20.68	19.54
		6	0	19.58	18.48
3	1711.5	1	0	20.93	19.58
		1	8	20.53	19.50
		1	14	20.56	19.45
		8	0	19.49	18.59
		8	4	19.50	18.50
		8	7	19.53	18.62
		15	0	19.49	18.56
	1732.5	1	0	20.80	19.78
		1	8	20.79	19.81
		1	14	20.72	19.70
		8	0	19.83	18.89
		8	4	19.79	18.87
		8	7	19.78	18.80
		15	0	19.74	18.81
	1753.5	1	0	20.61	19.52
		1	8	20.61	19.41
		1	14	20.66	19.44
		8	0	19.59	18.62



Shenzhen LCS Compliance Testing Laboratory Ltd.

Add: 101, 201 Bldg A & 301 Bldg C, Juji Industrial Park Yabianxueziwei, Shajing Street, Baoan District, Shenzhen, 518000, China

Tel: +(86) 0755-82591330 | E-mail: webmaster@lcs-cert.com | Web: www.lcs-cert.com

Scan code to check authenticity



5	1712.0	8	4	19.58	18.62
		8	7	19.60	18.66
		15	0	19.54	18.55
		1	0	20.47	19.39
		1	12	20.56	19.55
		1	24	20.49	19.43
		12	0	19.48	18.52
		12	6	19.46	18.52
		12	13	19.58	18.65
	25	0	19.58	18.65	
	1	0	20.81	19.72	
	1	12	20.89	19.77	
	1	24	20.73	19.61	
	12	0	19.83	18.90	
	12	6	19.89	18.82	
	12	13	19.77	18.75	
	25	0	19.85	18.85	
	1	0	20.53	19.58	
	1	12	20.67	19.69	
	1	24	20.52	19.58	
	12	0	19.47	18.61	
	12	6	19.52	18.52	
	12	13	19.63	18.71	
	25	0	19.62	18.63	
	10	1715.0	1	0	20.53
1			24	20.64	19.63
1			49	20.64	19.60
25			0	19.50	18.50
25			12	19.51	18.48
25			25	19.73	18.75
50			0	19.66	18.72
1		0	20.75	19.83	
1		24	20.75	19.87	
1		49	20.65	19.65	
25		0	19.91	19.03	
25		12	19.93	19.01	
25		25	19.80	18.81	
50		0	19.88	18.91	
1		0	20.61	19.51	
1		24	20.74	19.70	
1		49	20.63	19.45	
25		0	19.57	18.66	
25		12	19.55	18.64	
25		25	19.75	18.87	
50		0	19.71	18.82	
15	1717.5	1	0	20.39	19.40
		1	38	20.55	19.61
		1	74	20.57	19.53
		37	0	19.41	19.43
		37	18	19.59	19.61
		37	37	19.55	19.42
		75	0	19.56	18.55
	1	0	20.67	19.69	
	1	38	20.74	19.82	
	1	74	20.53	19.59	
	37	0	19.71	19.70	
	37	18	19.76	19.81	
	37	37	19.58	19.52	





1747.5	75	0	19.85	18.82	
	1	0	20.51	19.67	
	1	38	20.51	19.75	
	1	74	20.48	19.65	
	37	0	19.71	19.74	
	37	18	19.74	19.72	
	37	37	19.61	19.62	
	75	0	19.75	18.75	
20	1720.0	1	0	20.27	19.23
		1	49	20.80	19.72
		1	99	20.42	19.33
		50	0	19.33	18.35
		50	25	19.36	18.36
		50	50	19.57	18.66
		100	0	19.48	18.54
		100	0	19.48	18.54
	1732.5	1	0	20.53	19.49
		1	49	20.92	19.75
		1	99	20.48	19.31
		50	0	19.97	19.04
		50	25	19.93	19.00
		50	50	19.67	18.75
		100	0	19.88	18.89
		100	0	19.88	18.89
	1745.0	1	0	20.45	19.60
		1	49	20.72	19.90
		1	99	20.32	19.46
		50	0	19.68	18.76
		50	25	19.67	18.78
		50	50	19.88	18.91
		100	0	19.78	18.82
		100	0	19.78	18.82

LTE Band5

BW (MHz)	Frequency (MHz)	RB Configuration		Average Power [dBm]	
		Size	Offset	QPSK	16QAM
1.4	824.7	1	0	22.33	21.11
		1	2	22.44	21.24
		1	5	22.31	21.12
		3	0	22.40	21.18
		3	1	22.40	21.18
		3	3	22.40	21.16
		6	0	21.33	20.28
		6	0	21.33	20.28
	836.5	1	0	21.97	20.91
		1	2	22.11	21.03
		1	5	21.95	20.87
		3	0	22.10	20.92
		3	1	22.10	20.86
		3	3	22.11	20.89
		6	0	21.08	20.08
		6	0	21.08	20.08
	848.3	1	0	22.24	21.11
		1	2	22.41	21.28
		1	5	22.28	21.10
		3	0	22.32	21.17
		3	1	22.34	21.15
		3	3	22.36	21.16
		6	0	21.34	20.19
		6	0	21.34	20.19
3	825.5	1	0	22.36	21.40
		1	8	22.32	21.33
		1	14	22.24	21.33



Shenzhen LCS Compliance Testing Laboratory Ltd.

Add: 101, 201 Bldg A & 301 Bldg C, Juji Industrial Park Yabianxueziwei, Shajing Street, Baoan District, Shenzhen, 518000, China

Tel: +(86) 0755-82591330 | E-mail: webmaster@lcs-cert.com | Web: www.lcs-cert.com

Scan code to check authenticity



5	836.5	8	0	21.28	20.29
		8	4	21.24	20.32
		8	7	21.28	20.25
		15	0	21.21	20.27
	836.5	1	0	22.08	21.13
	836.5	1	8	22.01	21.10
	836.5	1	14	22.07	21.08
	836.5	8	0	21.04	20.07
	836.5	8	4	21.03	20.06
	836.5	8	7	21.11	20.09
	836.5	15	0	21.02	20.07
	847.5	1	0	22.28	21.18
	847.5	1	8	22.28	21.16
	847.5	1	14	22.31	21.17
	847.5	8	0	21.25	20.26
847.5	8	4	21.28	20.30	
847.5	8	7	21.25	20.20	
847.5	15	0	21.27	20.21	
5	826.5	1	0	22.29	21.23
		1	12	22.39	21.25
		1	24	22.16	21.10
		12	0	21.23	20.17
		12	6	21.22	20.15
		12	13	21.24	20.15
		25	0	21.25	20.23
	836.5	1	0	21.98	21.08
	836.5	1	12	22.07	21.14
	836.5	1	24	22.01	21.09
	836.5	12	0	21.05	20.07
	836.5	12	6	21.04	20.00
	836.5	12	13	21.13	20.12
	836.5	25	0	21.11	20.09
	846.5	1	0	22.14	21.07
846.5	1	12	22.30	21.25	
846.5	1	24	22.25	21.16	
846.5	12	0	21.34	20.33	
846.5	12	6	21.27	20.35	
846.5	12	13	21.22	20.31	
846.5	25	0	21.36	20.33	
10	829.0	1	0	22.34	21.40
		1	24	22.30	21.36
		1	49	22.07	21.11
		25	0	21.28	20.28
		25	12	21.33	20.31
		25	25	21.16	20.15
		50	0	21.21	20.18
	836.5	1	0	22.15	21.02
	836.5	1	24	22.27	21.07
	836.5	1	49	22.11	20.99
	836.5	25	0	21.09	20.08
	836.5	25	12	21.08	20.09
	836.5	25	25	21.17	20.18
	836.5	50	0	21.08	20.12
	844.0	1	0	22.11	20.89
844.0	1	24	22.38	21.15	
844.0	1	49	22.30	21.11	
844.0	25	0	21.20	20.22	
844.0	25	12	21.22	20.23	





		25	25	21.14	20.14
		50	0	21.21	20.13

LTE Band7

BW (MHz)	Frequency (MHz)	RB Configuration		Average Power [dBm]	
		Size	Offset	QPSK	16QAM
5	2502.5	1	0	19.24	18.18
		1	12	19.42	18.35
		1	24	19.31	18.29
		12	0	18.41	17.36
		12	6	18.42	17.39
		12	13	18.30	17.25
		25	0	18.40	17.41
	2535.0	1	0	20.19	19.18
		1	12	20.31	19.19
		1	24	20.03	18.97
		12	0	19.27	18.22
		12	6	19.30	18.19
		12	13	19.08	18.02
		25	0	19.18	18.20
	2567.5	1	0	19.83	18.90
		1	12	19.94	18.99
		1	24	19.77	18.83
		12	0	18.94	17.95
		12	6	18.95	17.93
		12	13	18.81	17.83
		25	0	18.85	17.86
10	2505.0	1	0	19.35	18.44
		1	24	19.53	18.58
		1	49	19.59	18.63
		25	0	18.59	17.59
		25	12	18.58	17.60
		25	25	18.57	17.54
		50	0	18.62	17.59
	2535.0	1	0	20.37	19.39
		1	24	20.34	19.31
		1	49	19.98	19.03
		25	0	19.53	18.47
		25	12	19.49	18.46
		25	25	19.05	18.02
		50	0	19.26	18.28
	2565.0	1	0	20.01	18.90
		1	24	20.16	18.95
		1	49	19.90	18.79
		25	0	19.02	18.02
		25	12	19.02	18.01
		25	25	18.86	17.87
		50	0	18.89	17.94
15	2507.5	1	0	19.27	18.32
		1	38	19.50	18.59
		1	74	19.75	18.80
		37	0	18.36	18.36
		37	18	18.59	18.59
		37	37	18.85	18.86
		75	0	18.78	17.68
	2535.0	1	0	20.36	19.41
		1	38	20.20	19.29





		1	74	19.81	18.88		
		37	0	19.39	19.38		
		37	18	19.30	19.26		
		37	37	18.89	18.92		
		75	0	19.36	18.23		
		1	0	19.79	18.96		
		1	38	19.94	19.01		
	2562.5	1	74	19.78	18.95		
		37	0	18.93	18.93		
		37	18	19.07	19.08		
		37	37	18.92	18.92		
		75	0	18.92	17.87		
		20	2510.0	1	0	19.19	18.15
				1	49	19.76	18.67
1	99			19.83	18.77		
50	0			18.60	17.57		
50	25			18.58	17.64		
50	50			19.16	18.17		
100	0			18.89	17.90		
2535.0	1		0	20.24	19.13		
	1		49	20.44	19.13		
	1		99	19.68	18.57		
	50		0	19.59	18.48		
	50		25	19.58	18.54		
	50		50	18.86	17.90		
	100		0	19.31	18.25		
2560	1	0	19.70	18.85			
	1	49	20.25	19.29			
	1	99	19.67	18.81			
	50	0	18.73	17.72			
	50	25	18.70	17.73			
	50	50	18.85	17.84			
	100	0	18.82	17.75			

LTE Band 12

BW (MHz)	Frequency (MHz)	RB Configuration		Average Power [dBm]	
		Size	Offset	QPSK	16QAM
1.4	699.7	1	0	22.38	21.20
		1	2	22.52	21.37
		1	5	22.37	21.20
		3	0	22.42	21.25
		3	1	22.43	21.25
		3	3	22.46	21.31
		6	0	21.39	20.27
	707.5	1	0	22.10	20.98
		1	2	22.18	21.11
		1	5	22.01	20.96
		3	0	22.18	20.93
		3	1	22.16	20.92
		3	3	22.15	20.89
		6	0	21.17	20.17
	715.3	1	0	22.06	20.86
		1	2	22.09	21.02
		1	5	22.02	20.83
		3	0	22.09	20.84
		3	1	22.08	20.81
		3	3	21.99	20.78



Shenzhen LCS Compliance Testing Laboratory Ltd.

Add: 101, 201 Bldg A & 301 Bldg C, Juji Industrial Park Yabianxueziwei, Shajing Street, Baoan District, Shenzhen, 518000, China

Tel: +(86) 0755-82591330 | E-mail: webmaster@lcs-cert.com | Web: www.lcs-cert.com

Scan code to check authenticity



		6	0	21.16	20.05
3	700.5	1	0	22.87	21.90
		1	8	22.86	21.83
		1	14	22.77	21.81
		8	0	21.83	20.88
		8	4	21.84	20.84
		8	7	21.85	20.85
		15	0	21.79	20.75
	707.5	1	0	22.63	21.46
		1	8	22.66	21.44
		1	14	22.68	21.29
		8	0	21.50	20.29
		8	4	21.62	20.68
		8	7	21.56	20.55
		15	0	21.69	20.59
	714.3	1	0	22.62	21.23
		1	8	22.29	20.88
		1	14	22.25	20.86
		8	0	21.17	20.14
		8	4	21.23	20.30
		8	7	21.28	20.36
		15	0	21.27	20.06
5	701.5	1	0	22.86	21.77
		1	12	22.91	21.83
		1	24	22.70	21.65
		12	0	21.77	20.73
		12	6	21.74	20.73
		12	13	21.80	20.75
		25	0	21.80	20.82
	707.5	1	0	22.68	21.66
		1	12	22.70	21.71
		1	24	22.54	21.62
		12	0	21.78	20.79
		12	6	21.75	20.84
		12	13	21.59	20.58
		25	0	21.69	20.68
	713.5	1	0	22.56	21.44
		1	12	22.67	21.53
		1	24	22.64	21.38
		12	0	21.61	20.53
		12	6	21.56	20.57
		12	13	21.65	20.62
		25	0	21.58	20.64
10	704	1	0	22.91	21.91
		1	24	22.85	21.83
		1	49	22.56	21.57
		25	0	21.69	20.65
		25	12	21.71	20.67
		25	25	21.58	20.55
		50	0	21.63	20.67
	707.5	1	0	22.86	21.65
		1	24	22.82	21.66
		1	49	22.65	21.49
		25	0	21.86	20.87
		25	12	21.88	20.89
		25	25	21.68	20.70
		50	0	21.77	20.84
711	1	0	22.65	21.47	





		1	24	22.76	21.60
		1	49	22.62	21.34
		25	0	21.81	20.82
		25	12	21.84	20.86
		25	25	21.82	20.80
		50	0	21.76	20.80

LTE Band17

BW (MHz)	Frequency (MHz)	RB Configuration		Average Power [dBm]	
		Size	Offset	QPSK	16QAM
5	706.5	1	0	22.70	21.56
		1	12	22.71	21.61
		1	24	22.58	21.48
		12	0	21.72	20.63
		12	6	21.69	20.66
		12	13	21.57	20.54
		25	0	21.62	20.63
	710	1	0	22.59	21.66
		1	12	22.64	21.72
		1	24	22.48	21.54
		12	0	21.71	20.75
		12	6	21.74	20.74
		12	13	21.62	20.67
		25	0	21.65	20.67
	713.5	1	0	22.52	21.41
		1	12	22.69	21.49
		1	24	22.65	21.39
		12	0	21.52	20.51
		12	6	21.51	20.55
		12	13	21.59	20.58
		25	0	21.59	20.61
10	709	1	0	22.65	21.70
		1	24	22.65	21.73
		1	49	22.43	21.52
		25	0	21.76	20.78
		25	12	21.77	20.79
		25	25	21.67	20.67
		50	0	21.72	20.72
	710	1	0	22.73	21.55
		1	24	22.76	21.59
		1	49	22.65	21.41
		25	0	21.87	20.88
		25	12	21.82	20.91
		25	25	21.75	20.77
		50	0	21.82	20.84
	711	1	0	22.67	21.43
		1	24	22.72	21.46
		1	49	22.62	21.37
		25	0	21.84	20.90
		25	12	21.84	20.89
		25	25	21.76	20.80
		50	0	21.75	20.77



Shenzhen LCS Compliance Testing Laboratory Ltd.

Add: 101, 201 Bldg A & 301 Bldg C, Juji Industrial Park Yabianxueziwei, Shajing Street, Baoan District, Shenzhen, 518000, China

Tel: +(86) 0755-82591330 | E-mail: webmaster@lcs-cert.com | Web: www.lcs-cert.com

Scan code to check authenticity



LTE Band25

BW (MHz)	Frequency (MHz)	RB Configuration		Average Power [dBm]	
		Size	Offset	QPSK	16QAM
1.4	1850.7	1	0	21.59	20.39
		1	3	21.74	20.56
		1	5	21.58	20.36
		3	0	21.59	20.39
		3	2	21.59	20.37
		3	3	21.62	20.36
		6	0	20.73	19.59
	1882.5	1	0	21.49	20.29
		1	3	21.54	20.45
		1	5	21.42	20.23
		3	0	21.42	20.20
		3	2	21.43	20.23
		3	3	21.48	20.19
	1914.3	6	0	20.53	19.45
		1	0	21.06	19.86
		1	3	21.19	20.08
		1	5	21.11	19.88
		3	0	21.14	19.95
		3	2	21.13	19.94
		3	3	21.14	19.97
	3	1851.5	6	0	20.07
1			0	22.10	21.03
1			7	22.12	21.04
1			14	22.15	21.07
8			0	21.18	20.09
8			4	21.16	20.03
8			7	21.19	20.07
1882.5		15	0	21.06	20.02
		1	0	21.92	20.84
		1	7	21.68	20.56
		1	14	21.59	20.39
		8	0	21.01	19.84
		8	4	20.92	19.84
		8	7	20.90	19.90
1913.5		15	0	20.82	19.86
		1	0	21.12	19.89
		1	7	21.11	19.89
		1	14	21.09	19.86
		8	0	20.08	19.09
		8	4	20.09	19.08
		8	7	20.03	19.02
5	1852.5	15	0	20.05	18.97
		1	0	22.07	20.89
		1	12	22.34	21.10
		1	24	22.13	20.97
		12	0	21.02	19.96
		12	6	21.04	19.93
		12	13	21.16	19.97
	1882.5	25	0	20.94	20.00
		1	0	21.82	20.69
		1	12	21.62	20.49
		1	24	21.61	20.26
		12	0	20.53	19.47
		12	6	20.86	19.56



Shenzhen LCS Compliance Testing Laboratory Ltd.

Add: 101, 201 Bldg A & 301 Bldg C, Juji Industrial Park Yabianxueziwei, Shajing Street, Baoan District, Shenzhen, 518000, China

Tel: +(86) 0755-82591330 | E-mail: webmaster@lcs-cert.com | Web: www.lcs-cert.com

Scan code to check authenticity



	1912.5	12	13	20.68	19.72
		25	0	20.39	19.57
		1	0	20.96	19.95
		1	12	21.14	20.15
		1	24	20.96	19.99
		12	0	20.11	19.11
		12	6	20.11	19.10
		12	13	19.97	19.06
		25	0	20.06	19.04
10	1855.0	1	0	22.11	21.01
		1	24	22.33	21.21
		1	49	22.20	21.22
		25	0	21.06	19.99
		25	12	21.04	20.00
		25	25	21.26	20.14
		50	0	21.16	20.04
	1882.5	1	0	21.92	20.87
		1	24	22.14	20.98
		1	49	21.76	20.83
		25	0	21.00	19.91
		25	12	21.01	19.91
		25	25	20.81	19.74
		50	0	20.97	19.80
	1910.0	1	0	21.53	20.33
		1	24	21.10	19.98
		1	49	21.12	19.89
		25	0	20.23	19.21
		25	12	20.19	19.24
		25	25	19.93	18.95
		50	0	20.14	19.09
15	1857.5	1	0	21.99	20.92
		1	37	22.23	21.24
		1	74	22.08	21.08
		37	0	20.94	20.93
		37	18	21.18	21.19
		37	38	21.11	21.09
		75	0	21.26	20.14
	1882.5	1	0	21.86	20.86
		1	37	21.92	20.88
		1	74	21.78	20.72
		37	0	20.88	20.84
		37	18	20.88	20.88
		37	38	20.78	20.73
		75	0	20.98	19.89
	1907.5	1	0	21.58	20.72
1		37	21.51	20.56	
1		74	21.36	20.50	
37		0	20.66	20.72	
37		18	20.56	20.64	
37		38	20.49	20.49	
75		0	20.52	19.53	
20	1860.0	1	0	21.94	20.76
		1	49	22.40	21.20
		1	99	21.96	20.89
		50	0	21.16	20.20
		50	25	21.18	20.16
		50	50	21.26	20.24
		100	0	21.21	20.20





	1882.5	1	0	21.75	20.73
		1	49	22.11	20.86
		1	99	21.68	20.57
		50	0	20.98	19.93
		50	25	20.97	19.96
		50	50	20.76	19.82
		100	0	20.89	19.83
	1905.0	1	0	21.64	20.70
		1	49	21.74	20.72
		1	99	21.36	20.02
		50	0	20.63	19.62
		50	25	20.63	19.71
		50	50	20.14	19.25
		100	0	20.40	19.39

LTE Band26

BW (MHz)	Frequency (MHz)	RB Configuration		Average Power [dBm]	
		Size	Offset	QPSK	16QAM
1.4	814.7	1	0	23.23	22.03
		1	3	23.34	22.16
		1	5	23.16	21.99
		3	0	23.29	22.11
		3	2	23.31	22.12
		3	3	23.30	22.06
		6	0	22.24	21.20
	831.5	1	0	22.89	21.89
		1	3	23.00	21.99
		1	5	22.86	21.79
		3	0	23.00	21.80
		3	2	22.99	21.81
		3	3	22.96	21.36
		6	0	21.86	20.66
	848.3	1	0	22.61	21.43
		1	3	22.76	21.65
		1	5	22.59	21.47
		3	0	22.67	21.51
		3	2	22.63	21.52
		3	3	22.64	21.50
		6	0	21.61	20.49
3	815.5	1	0	23.25	22.34
		1	7	22.89	21.82
		1	14	22.75	21.76
		8	0	21.73	20.78
		8	4	21.67	20.75
		8	7	21.76	20.76
		15	0	21.72	20.72
	831.5	1	0	22.49	21.44
		1	7	22.48	21.34
		1	14	22.47	21.38
		8	0	21.50	20.45
		8	4	21.46	20.46
		8	7	21.52	20.52
		15	0	21.53	20.41
	847.5	1	0	22.62	21.48
		1	7	22.67	21.51
		1	14	22.67	21.49
		8	0	21.73	20.71





5	816.5	8	4	21.72	20.71	
		8	7	21.71	20.70	
		15	0	21.67	20.62	
		1	0	23.12	21.74	
		1	12	22.90	21.82	
		1	24	22.73	21.60	
		12	0	21.74	20.69	
		12	6	21.78	20.76	
		12	13	21.69	20.65	
	25	0	21.76	20.75		
	831.5	831.5	1	0	22.50	21.55
			1	12	22.58	21.67
			1	24	22.51	21.62
			12	0	21.60	20.58
			12	6	21.54	20.60
			12	13	21.62	20.63
			25	0	21.63	20.62
	846.5	846.5	1	0	22.61	21.60
			1	12	22.81	21.77
			1	24	22.66	21.66
			12	0	21.89	20.91
			12	6	21.89	20.88
			12	13	21.81	20.71
			25	0	21.87	20.93
	10	819.0	1	0	22.88	21.89
1			24	22.88	21.98	
1			49	22.62	21.65	
25			0	21.82	20.81	
25			12	21.82	20.86	
25			25	21.66	20.67	
50			0	21.79	20.76	
831.5		831.5	1	0	22.61	21.52
			1	24	22.60	21.60
			1	49	22.68	21.55
			25	0	21.62	20.65
			25	12	21.58	20.66
			25	25	21.69	20.67
			50	0	21.63	20.67
844.0		844.0	1	0	22.61	21.38
			1	24	22.86	21.65
			1	49	22.80	21.58
			25	0	21.79	20.87
			25	12	21.79	20.80
			25	25	21.68	20.69
			50	0	21.74	20.68

LTE Band38

BW (MHz)	Frequency (MHz)	RB Configuration		Average Power [dBm]	
		Size	Offset	QPSK	16QAM
5	2572.5	1	0	20.03	18.94
		1	12	20.16	19.08
		1	24	19.94	18.85
		12	0	19.00	17.93
		12	6	19.00	17.92
		12	13	19.02	17.94
		25	0	18.96	17.96
	2595.0	1	0	19.85	18.76





		1	12	20.08	18.99
		1	24	20.04	18.96
		12	0	18.93	17.88
		12	6	18.92	17.87
		12	13	19.03	18.00
		25	0	19.01	18.01
		25	0	19.01	18.01
	2617.5	1	0	20.47	19.54
		1	12	20.55	19.63
		1	24	20.37	19.42
		12	0	19.54	18.53
		12	6	19.53	18.55
		12	13	19.52	18.50
		25	0	19.54	18.50
10	2575.0	1	0	20.30	19.32
		1	24	20.45	19.45
		1	49	20.07	19.10
		25	0	19.35	18.35
		25	12	19.33	18.35
		25	25	19.06	18.06
		50	0	19.19	18.21
	2595.0	1	0	19.99	18.98
		1	24	20.44	19.40
		1	49	20.37	19.31
		25	0	19.13	18.12
		25	12	19.13	18.14
		25	25	19.28	18.29
		50	0	19.23	18.16
	2615.0	1	0	20.72	19.49
		1	24	20.90	19.67
		1	49	20.42	19.22
		25	0	19.61	18.67
		25	12	19.64	18.67
		25	25	19.55	18.62
		50	0	19.60	18.64
15	2577.5	1	0	20.21	19.26
		1	37	20.16	19.15
		1	74	19.89	18.91
		37	0	19.28	19.28
		37	18	19.15	19.14
		37	38	18.92	18.90
		75	0	19.19	18.15
	2595.0	1	0	19.88	18.86
		1	37	20.22	19.19
		1	74	20.44	19.41
		37	0	18.86	18.86
		37	18	19.20	19.18
		37	38	19.40	19.38
		75	0	19.18	18.21
	2612.5	1	0	20.54	19.67
		1	37	20.62	19.74
		1	74	20.27	19.38
		37	0	19.68	19.71
		37	18	19.75	19.73
		37	38	19.37	19.37
		75	0	19.68	18.68
20	2580.0	1	0	20.12	18.97
		1	49	20.49	19.40
		1	99	19.96	18.86





		50	0	19.32	18.30
		50	25	19.33	18.33
		50	50	18.95	17.97
		100	0	18.99	18.00
	2595.0	1	0	19.48	18.72
		1	49	20.32	19.12
		1	99	20.72	19.60
		50	0	18.86	17.84
		50	25	18.85	17.85
		50	50	19.20	18.19
	2610.0	100	0	19.02	18.03
		1	0	20.08	19.19
		1	49	20.81	19.98
		1	99	20.70	19.81
		50	0	19.41	18.42
		50	25	19.40	18.41
		50	50	19.62	18.61
			100	0	19.52

LTE Band41

BW (MHz)	Frequency (MHz)	RB Configuration		Average Power [dBm]	
		Size	Offset	QPSK	16QAM
5	2498.5	1	0	22.65	21.39
		1	12	22.59	21.34
		1	24	22.59	21.25
		12	0	21.78	20.62
		12	6	21.78	20.69
		12	13	21.72	20.64
	2593.0	25	0	21.67	20.79
		1	0	22.61	21.64
		1	12	22.68	21.52
		1	24	22.64	21.60
		12	0	21.80	20.72
		12	6	21.80	20.72
	2687.5	12	13	21.79	20.70
		25	0	21.75	20.79
		1	0	23.31	22.29
		1	12	23.45	22.26
		1	24	23.33	22.33
		12	0	22.42	21.38
10	2501.0	12	6	22.42	21.37
		12	13	22.36	21.41
		25	0	22.28	21.39
		1	0	22.37	21.40
		1	24	22.53	21.81
		1	49	22.37	21.41
	2593.0	25	0	21.60	20.47
		25	12	21.69	20.57
		25	25	21.58	20.58
		50	0	21.57	20.56
		1	0	22.52	21.57
		1	24	22.71	21.91
		1	49	22.50	21.56
		25	0	21.82	20.60
		25	12	21.81	20.69
		25	25	21.75	20.56
		50	0	21.75	20.65



Shenzhen LCS Compliance Testing Laboratory Ltd.

Add: 101, 201 Bldg A & 301 Bldg C, Juji Industrial Park Yabianxueziwei, Shajing Street, Baoan District, Shenzhen, 518000, China

Tel: +(86) 0755-82591330 | E-mail: webmaster@lcs-cert.com | Web: www.lcs-cert.com

Scan code to check authenticity



15	2685.0	1	0	23.03	22.07
		1	24	23.27	22.02
		1	49	23.23	22.21
		25	0	22.32	21.34
		25	12	22.30	21.33
		25	25	22.36	21.39
		50	0	22.38	21.42
15	2503.5	1	0	22.15	21.16
		1	37	22.26	21.29
		1	74	22.10	21.14
		37	0	20.99	21.18
		37	18	21.40	21.39
		37	38	21.21	21.31
		75	0	21.44	20.41
	2593.0	1	0	22.38	21.21
		1	37	22.47	21.57
		1	74	22.33	21.39
		37	0	21.43	21.50
		37	18	21.49	21.58
		37	38	21.41	21.40
		75	0	21.70	20.69
	2682.5	1	0	22.93	21.86
		1	37	23.03	22.00
		1	74	23.05	22.01
		37	0	21.95	21.97
		37	18	22.03	22.00
		37	38	22.05	22.03
		75	0	22.26	21.35
20	2506.0	1	0	22.26	21.79
		1	49	22.56	22.03
		1	99	22.26	21.76
		50	0	21.49	20.60
		50	25	21.59	20.58
		50	50	21.51	20.53
		100	0	21.48	20.59
	2593.0	1	0	22.62	22.13
		1	49	22.82	22.33
		1	99	22.50	22.04
		50	0	21.79	20.83
		50	25	21.78	20.88
		50	50	21.74	20.77
		100	0	21.80	20.81
	2680.0	1	0	23.07	22.51
		1	49	23.52	22.73
		1	99	23.28	22.52
		50	0	22.23	21.24
		50	25	22.19	21.21
		50	50	22.34	21.38
		100	0	22.24	21.36

LTE Band 66

BW (MHz)	Frequency (MHz)	RB Configuration		Average Power [dBm]	
		Size	Offset	QPSK	16QAM
1.4	1710.7	1	0	21.62	20.39
		1	3	21.65	20.53
		1	5	21.60	20.39
		3	0	21.67	20.53





3	1755.0	3	2	21.66	20.53
		3	3	21.71	20.53
		6	0	20.55	19.42
		1	0	21.83	20.72
		1	3	21.86	20.99
		1	5	21.75	20.70
		3	0	21.95	20.74
		3	2	21.93	20.72
		3	3	21.91	20.72
	6	0	20.85	19.82	
	1	0	22.01	20.54	
	1	3	21.84	20.53	
	1	5	21.48	20.31	
	3	0	21.55	20.36	
	3	2	21.55	20.36	
	3	3	21.56	20.39	
6	0	20.48	19.31		
3	1711.5	1	0	21.13	20.10
		1	7	21.09	20.10
		1	14	21.06	20.06
		8	0	19.99	19.14
		8	4	19.99	19.11
		8	7	20.04	19.11
		15	0	20.01	19.09
	1755.0	1	0	21.37	20.38
		1	7	21.37	20.38
		1	14	21.31	20.27
		8	0	20.32	19.43
		8	4	20.37	19.40
		8	7	20.35	19.41
	15	0	20.32	19.39	
	1778.5	1	0	21.53	20.46
		1	7	21.56	20.39
		1	14	21.54	20.31
		8	0	20.49	19.43
8		4	20.48	19.43	
8		7	20.50	19.48	
15	0	20.49	19.41		
5	1712.5	1	0	21.46	20.45
		1	12	21.59	20.56
		1	24	21.49	20.47
		12	0	20.45	19.47
		12	6	20.43	19.49
		12	13	20.60	19.66
		25	0	20.59	19.68
	1755.0	1	0	21.85	20.78
		1	12	21.93	20.82
		1	24	21.69	20.67
		12	0	20.82	19.82
		12	6	20.78	19.82
		12	13	20.88	19.83
		25	0	20.83	19.90
	1777.5	1	0	21.90	20.95
		1	12	22.04	21.12
		1	24	21.96	20.95
		12	0	21.01	19.94
12		6	20.78	19.63	
12	13	20.76	19.69		





		25	0	20.49	19.55
10	1715.0	1	0	21.32	20.12
		1	24	21.28	20.27
		1	49	21.17	20.22
		25	0	20.03	19.09
		25	12	20.02	19.09
		25	25	20.39	19.39
		50	0	20.27	19.28
	1755.0	1	0	21.41	20.38
		1	24	21.47	20.49
		1	49	21.29	20.32
		25	0	20.44	19.45
		25	12	20.41	19.46
		25	25	20.49	19.54
		50	0	20.48	19.51
	1775.0	1	0	21.50	20.32
		1	24	21.64	20.53
		1	49	21.55	20.37
		25	0	20.66	19.71
		25	12	20.64	19.68
		25	25	20.62	19.60
		50	0	20.63	19.66
15	1717.5	1	0	21.03	19.98
		1	37	21.17	20.15
		1	74	21.14	20.13
		37	0	20.02	19.99
		37	18	20.20	20.14
		37	38	20.18	20.16
		75	0	20.16	19.16
	1755.0	1	0	21.30	20.31
		1	37	21.40	20.38
		1	74	21.22	20.20
		37	0	20.35	20.38
		37	18	20.40	20.45
		37	38	20.23	20.24
		75	0	20.42	19.41
	1772.5	1	0	21.30	20.39
		1	37	21.51	20.70
		1	74	21.38	20.57
		37	0	20.46	20.45
		37	18	20.70	20.69
		37	38	20.51	20.53
		75	0	20.60	19.70
20	1720.0	1	0	20.81	19.75
		1	49	21.34	20.35
		1	99	21.07	19.98
		50	0	19.86	18.96
		50	25	19.89	18.99
		50	50	20.18	19.30
		100	0	20.01	19.07
	1755.0	1	0	21.19	20.19
		1	49	21.50	20.41
		1	99	21.05	20.06
		50	0	20.40	19.45
		50	25	20.39	19.42
		50	50	20.62	19.64
		100	0	20.52	19.51
	1770.0	1	0	21.19	20.21





		1	49	21.70	20.78
		1	99	21.25	20.38
		50	0	20.78	19.79
		50	25	20.78	19.78
		50	50	20.49	19.56
		100	0	20.66	19.69

<WLAN 2.4GHz Conducted Power>

Mode	Channel	Frequency (MHz)	Data rate (Mbps)	Average Output Power (dBm)
IEEE 802.11b	1	2412	1	15.58
			2	15.50
			5.5	15.44
			11	15.36
	6	2437	1	14.84
			2	14.75
			5.5	14.70
			11	14.66
	11	2462	1	14.77
			2	14.72
			5.5	14.65
			11	14.59
IEEE 802.11g	1	2412	6	14.56
			9	14.50
			12	14.44
			18	14.34
			24	14.26
			36	14.18
			48	14.11
			54	14.05
	6	2437	6	14.29
			9	14.23
			12	14.14
			18	14.07
			24	14.00
			36	13.95
			48	13.77
			54	13.59
	11	2462	6	14.19
			9	14.12
			12	14.05
			18	14.00
			24	13.96
			36	13.79
			48	13.65
			54	13.55
IEEE 802.11n HT20	1	2412	MCS0	13.70
			MCS1	13.64
			MCS2	13.55
			MCS3	13.39
			MCS4	13.32
			MCS5	13.24
			MCS6	13.14
			MCS7	13.08
	6	2437	MCS0	13.41
			MCS1	13.36
			MCS2	13.28
			MCS3	13.22



Shenzhen LCS Compliance Testing Laboratory Ltd.

Add: 101, 201 Bldg A & 301 Bldg C, Juji Industrial Park Yabianxueziwei, Shajing Street, Baoan District, Shenzhen, 518000, China

Tel: +(86) 0755-82591330 | E-mail: webmaster@lcs-cert.com | Web: www.lcs-cert.com

Scan code to check authenticity



			MCS4	13.15	
			MCS5	13.09	
			MCS6	13.03	
			MCS7	12.95	
	11	2462	MCS0	13.32	
			MCS1	13.25	
			MCS2	13.16	
			MCS3	13.10	
			MCS4	13.05	
			MCS5	13.00	
			MCS6	12.94	
	IEEE 802.11n HT40	3	2422	MCS7	12.89
				MCS0	13.00
				MCS1	12.89
MCS2				12.82	
MCS3				12.76	
MCS4				12.70	
MCS5				12.65	
6		2437	MCS6	12.58	
			MCS7	12.51	
			MCS0	12.81	
			MCS1	12.75	
			MCS2	12.68	
			MCS3	12.62	
			MCS4	12.55	
9		2452	MCS5	12.47	
			MCS6	12.40	
			MCS7	12.34	
			MCS0	12.62	
			MCS1	12.54	
			MCS2	12.44	
			MCS3	12.28	
			MCS4	12.14	
			MCS5	12.06	
			MCS6	12.00	
			MCS7	11.94	

Note:SAR is not required for the following 2.4 GHz OFDM conditions as the highest reported SAR for DSSS is adjusted by the ratio of OFDM to DSSS specified maximum output power and the adjusted SAR is ≤ 1.2 W/kg.

<WLAN 5.2G Conducted Power>

Mode	Channel	Frequency (MHz)	Average Conducted Output Power(dBm)	Worst Case Test Rate Data
IEEE 802.11a	36	5180	10.90	MCS0
	40	5200	11.00	MCS0
	48	5240	10.79	MCS0
IEEE 802.11n HT20	36	5180	10.16	MCS0
	40	5200	10.34	MCS0
	48	5240	9.92	MCS0
IEEE 802.11n HT40	38	5190	10.75	MCS0
	46	5230	14.79	MCS0
IEEE 802.11AC20	36	5180	10.29	MCS0
	40	5200	10.37	MCS0
	48	5240	10.13	MCS0
IEEE 802.11AC40	38	5190	12.02	MCS0





	46	5230	10.42	MCS0
IEEE 802.11AC80	42	5210	10.30	MCS0

<WLAN 5.3G Conducted Power>

Mode	Channel	Frequency (MHz)	Average Conducted Output Power(dBm)	Worst Case Test Rate Data
IEEE 802.11a	52	5260	10.20	MCS0
	56	5280	10.15	MCS0
	64	5320	9.72	MCS0
IEEE 802.11n HT20	52	5260	10.03	MCS0
	56	5280	9.37	MCS0
	64	5320	8.86	MCS0
IEEE 802.11n HT40	52	5260	18.11	MCS0
	56	5280	18.88	MCS0
IEEE 802.11ac VHT20	64	5320	9.25	MCS0
	54	5270	8.76	MCS0
	62	5310	8.85	MCS0
IEEE 802.11ac VHT40	54	5270	18.48	MCS0
	62	5310	15.34	MCS0
IEEE 802.11ac VHT80	58	5290	9.65	MCS0

<WLAN 5.5G Conducted Power>

Mode	Channel	Frequency (MHz)	Average Conducted Output Power(dBm)	Worst Case Test Rate Data
IEEE 802.11a	100	5500	9.41	MCS0
	120	5600	9.63	MCS0
	140	5700	8.93	MCS0
IEEE 802.11n HT20	100	5500	10.95	MCS0
	120	5600	9.87	MCS0
	140	5700	9.27	MCS0
IEEE 802.11n HT40	100	5500	10.00	MCS0
	120	5600	8.47	MCS0
IEEE 802.11ac VHT20	140	5700	10.88	MCS0
	149	5510	9.43	MCS0
	165	5670	8.85	MCS0
IEEE 802.11ac VHT40	149	5510	10.55	MCS0
	165	5670	7.35	MCS0
IEEE 802.11ac VHT80	122	5610	9.08	MCS0



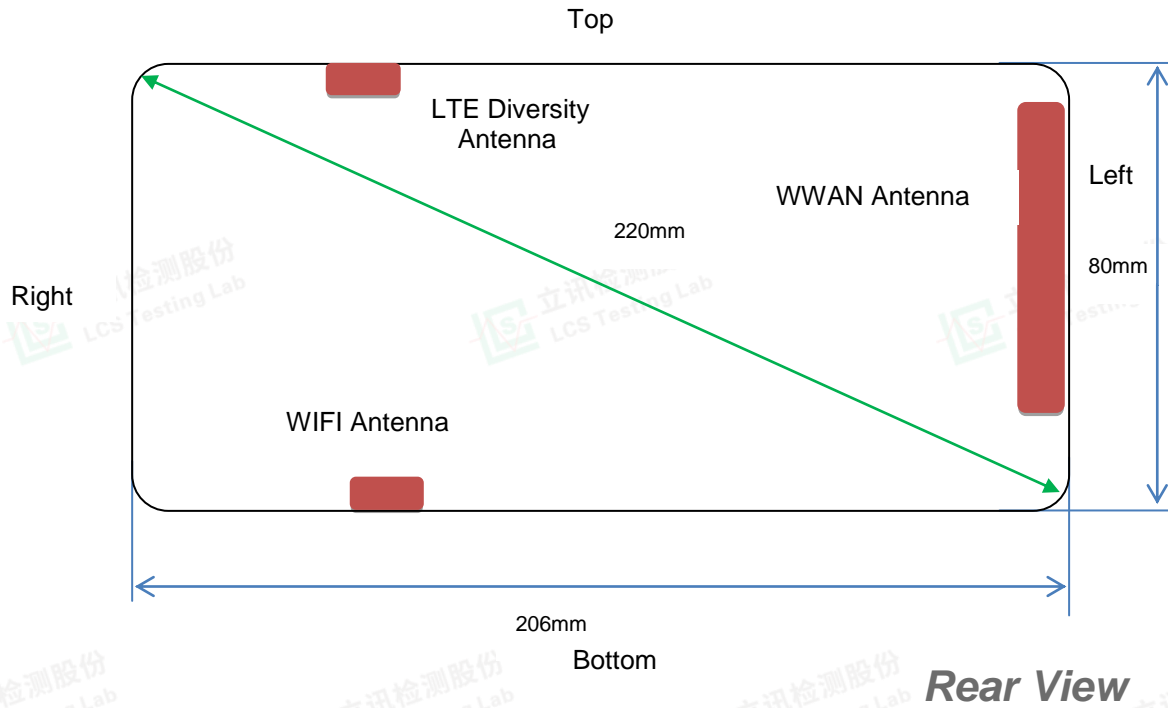


<WLAN 5.8GHz Conducted Power>

Mode	Channel	Frequency (MHz)	Conducted Output Power(dBm)
802.11a	149	5745	9.68
	157	5785	10.65
	165	5825	9.41
802.11n(20MHz)	149	5745	9.03
	157	5785	10.00
	165	5825	9.20
802.11n(40MHz)	151	5755	9.41
	159	5795	9.76
802.11ac(20MHz)	149	5745	9.18
	157	5785	10.10
	165	5825	9.38
802.11ac(40MHz)	151	5755	9.15
	159	5795	9.77
802.11ac(80MHz)	155	5775	9.69



4.2. Transmit Antennas and SAR Measurement Position



Antenna information:

WLAN Antenna	WLAN TX/RX
WWAN Antenna	GSM/UMTS/LTE TX/RX

Note:

- 1). Per KDB648474 D04, because the overall diagonal distance of this devices is 220mm>160mm, it is considered as “BlueCash-50 PC” device.
- 2). Per KDB648474 D04, 10-g extremity SAR is not required when Body-Worn mode 1-g reported SAR < 1.2 W/Kg.
- 3). According to the KDB941225 D06 Hot Spot SAR v02, the edges with less than 25 mm distance to the antennas need to be tested for SAR.
- 4). Per KDB 616217 D04, The antennas in tablets are typically located near the back (bottom) surface and/or along the edges of the devices; therefore, SAR evaluation is required for these configurations. Exposures from antennas through the front (top) surface of the displaysection of a full-size tablet, away from the edges, are generally limited to the user’s hands.

Distance of The Antenna to the EUT surface and edge (mm)						
Antennas	Front	Back	Top Side	Side	Left Side	Right Side
WLAN	<5	<5	69	<5	142	40
WWAN	<5	<5	<5	<5	<5	192

Positions for SAR tests; Hotspot mode						
Antennas	Front	Back	Top Side	Bottom Side	Left Side	Right Side
WLAN	Yes	Yes	No	Yes	No	No
WWAN	Yes	Yes	Yes	Yes	Yes	No

General Note: Referring to KDB 941225 D06 v02, When the overall device length and width are ≥9cm*5cm, the test distance is 0mm, SAR must be measured for all sides and surfaces with a transmitting antenna located with 25mm from that surface or edge.



4.3. SAR Measurement Results

The calculated SAR is obtained by the following formula:

$$\text{Reported SAR} = \text{Measured SAR} * 10^{(P_{\text{target}} - P_{\text{measured}})/10}$$

$$\text{Scaling factor} = 10^{(P_{\text{target}} - P_{\text{measured}})/10}$$

$$\text{Reported SAR} = \text{Measured SAR} * \text{Scaling factor}$$

Where

P_{target} is the power of manufacturing upper limit;

P_{measured} is the measured power;

Measured SAR is measured SAR at measured power which including power drift)

Reported SAR which including Power Drift and Scaling factor

Duty Cycle

Test Mode	Duty Cycle
GSM	3:8
UMTS	1:1
LTE	1:1
WLAN2450	1:1
WLAN5200	1:1
WLAN5300	1:1
WLAN5500	1:1
WLAN5800	1:1

4.3.1 SAR Results

SAR Values [GSM 850]

Ch.	Freq. (MHz)	Time slots	Test Position	Conducted Power (dBm)	Maximum Allowed Power (dBm)	Power Drift (%)	Scaling Factor	SAR _{1-g} results(W/kg)		Graph Results
								Measured	Reported	
<i>measured / reported SAR numbers - Body (hotspot open, distance 0mm)</i>										
190	836.6	3Txslots	Front	29.52	30.00	1.87	1.117	0.170	0.190	
190	836.6	3Txslots	Rear	29.52	30.00	0.34	1.117	0.480	0.536	Plot 1
128	824.2	3Txslots	Rear	29.52	30.00	3.45	1.117	0.466	0.520	
251	848.8	3Txslots	Rear	29.52	30.00	-0.08	1.117	0.451	0.504	
190	836.6	3Txslots	Left	29.52	30.00	-3.45	1.117	0.152	0.170	
190	836.6	3Txslots	Top	29.52	30.00	-0.21	1.117	0.136	0.152	
190	836.6	3Txslots	Bottom	29.52	30.00	3.36	1.117	0.120	0.134	

Remark:

- The value with black color is the maximum SAR Value of each test band.
- The frame average of GPRS (4Tx slots) higher than GSM and sample can support VoIP function, tested at GPRS (4Tx slots) mode for head.
- Per FCC KDB Publication 447498 D01, if the reported (scaled) SAR measured at the middle channel or highest output power channel for each test configuration is ≤ 0.8 W/kg then testing at the other channels is optional for such test configuration(s).

SAR Values [GSM 1900]

Ch.	Freq. (MHz)	time slots	Test Position	Conducted Power (dBm)	Maximum Allowed Power (dBm)	Power Drift (%)	Scaling Factor	SAR _{1-g} results(W/kg)		Graph Results
								Measured	Reported	
<i>measured / reported SAR numbers - Body (hotspot open, distance 0mm)</i>										
512	1850.2	3Txslots	Front	26.53	27.00	-1.77	1.114	0.015	0.017	
512	1850.2	3Txslots	Rear	26.53	27.00	-0.11	1.114	0.037	0.041	Plot 2
661	1880.0	3Txslots	Rear	26.53	27.00	2.87	1.114	0.031	0.035	
810	1909.8	3Txslots	Rear	26.53	27.00	-0.74	1.114	0.022	0.025	
512	1850.2	3Txslots	Left	26.53	27.00	3.45	1.114	0.011	0.012	
512	1850.2	3Txslots	Top	26.53	27.00	0.61	1.114	0.007	0.008	
512	1850.2	3Txslots	Bottom	26.53	27.00	-0.20	1.114	0.004	0.004	





Remark:

1. The value with black color is the maximum SAR Value of each test band.
2. The frame average of GPRS (4Tx slots) higher than GSM and sample can support VoIP function, tested at GPRS (4Tx slots) mode for head.
3. Per FCC KDB Publication 447498 D01, if the reported (scaled) SAR measured at the middle channel or highest output power channel for each test configuration is ≤ 0.8 W/kg then testing at the other channels is optional for such test configuration(s).

SAR Values [WCDMA Band V]

Ch.	Freq. (MHz)	Channel Type	Test Position	Conducted Power (dBm)	Maximum Allowed Power (dBm)	Power Drift (%)	Scaling Factor	SAR _{1-g} results(W/kg)		Graph Results
								Measured	Reported	
measured / reported SAR numbers - Body (hotspot open, distance 0mm)										
4183	836.6	RMC*	Front	22.87	23.00	1.41	1.030	0.129	0.133	
4183	836.6	RMC*	Rear	22.87	23.00	-0.88	1.030	0.419	0.432	Plot 3
4132	826.4	RMC*	Rear	22.87	23.00	3.45	1.030	0.402	0.414	
4233	846.6	RMC*	Rear	22.87	23.00	-0.06	1.030	0.389	0.401	
4183	836.6	RMC*	Left	22.87	23.00	3.74	1.030	0.113	0.116	
4183	836.6	RMC*	Top	22.87	23.00	0.52	1.030	0.104	0.107	
4183	836.6	RMC*	Bottom	22.87	23.00	3.36	1.030	0.089	0.092	

Remark:

1. The value with block color is the maximum SAR Value of each test band.
2. Per FCC KDB Publication 447498 D01, if the reported (scaled) SAR measured at the middle channel or highest output power channel for each test configuration is ≤ 0.8 W/kg then testing at the other channels is optional for such test configuration(s).
3. RMC* - RMC 12.2kbps mode;

SAR Values [WCDMA Band IV]

Ch.	Freq. (MHz)	Channel Type	Test Position	Conducted Power (dBm)	Maximum Allowed Power (dBm)	Power Drift (%)	Scaling Factor	SAR _{1-g} results(W/kg)		Graph Results
								Measured	Reported	
measured / reported SAR numbers - Body (hotspot open, distance 0mm)										
1513	1752.6	RMC	Front	23.37	23.50	-0.52	1.030	0.798	0.822	
1513	1752.6	RMC	Rear	23.37	23.50	-0.62	1.030	1.261	1.299	Plot 4
1312	1712.4	RMC	Rear	23.37	23.50	3.45	1.030	1.116	1.150	
1450	1740.0	RMC	Rear	23.37	23.50	0.56	1.030	1.098	1.131	
1513	1752.6	RMC	Left	23.37	23.50	-2.04	1.030	0.774	0.798	
1513	1752.6	RMC	Top	23.37	23.50	0.50	1.030	0.749	0.772	
1513	1752.6	RMC	Bottom	23.37	23.50	3.78	1.030	0.732	0.754	

Remark:

1. The value with block color is the maximum SAR Value of each test band.
2. Per FCC KDB Publication 447498 D01, if the reported (scaled) SAR measured at the middle channel or highest output power channel for each test configuration is ≤ 0.8 W/kg then testing at the other channels is optional for such test configuration(s).
3. RMC* - RMC 12.2kbps mode;

SAR Values [WCDMA Band II]

Ch.	Freq. (MHz)	Channel Type	Test Position	Conducted Power (dBm)	Maximum Allowed Power (dBm)	Power Drift (%)	Scaling Factor	SAR _{1-g} results(W/kg)		Graph Results
								Measured	Reported	
measured / reported SAR numbers - Body (hotspot open, distance 0mm)										
9400	1880.0	RMC	Front	23.34	23.50	-0.43	1.038	0.645	0.669	
9400	1880.0	RMC	Rear	23.34	23.50	-0.01	1.038	1.171	1.215	Plot 5
9262	1852.4	RMC	Rear	23.34	23.50	2.08	1.038	1.058	1.098	
9538	1907.6	RMC	Rear	23.34	23.50	-1.04	1.038	1.003	1.041	
9400	1880.0	RMC	Left	23.34	23.50	3.45	1.038	0.591	0.613	
9400	1880.0	RMC	Top	23.34	23.50	0.62	1.038	0.574	0.596	
9400	1880.0	RMC	Bottom	23.34	23.50	-0.98	1.038	0.549	0.570	





Remark:

1. The value with block color is the maximum SAR Value of each test band.
2. Per FCC KDB Publication 447498 D01, if the reported (scaled) SAR measured at the middle channel or highest output power channel for each test configuration is ≤ 0.8 W/kg then testing at the other channels is optional for such test configuration(s).
3. RMC* - RMC 12.2kbps mode;

SAR Values [LTE Band 2]

Ch.	Freq. (MHz)	Channel Type (20M)	Test Position	Conducted Power (dBm)	Maximum Allowed Power (dBm)	Power Drift (%)	Scaling Factor	SAR _{1-g} results(W/kg)		Graph Results
								Measured	Reported	
measured / reported SAR numbers - Body (hotspot open, distance 0mm)										
18700	1860.0	1RB	Front	21.28	21.50	-0.99	1.052	0.484	0.509	
18700	1860.0	1RB	Rear	21.28	21.50	-0.56	1.052	1.130	1.189	Plot 6
18900	1880.0	1RB	Rear	21.28	21.50	-1.56	1.052	1.125	1.183	
19100	1900.0	1RB	Rear	21.28	21.50	0.47	1.052	1.116	1.174	
18700	1860.0	1RB	Left	21.28	21.50	2.89	1.052	0.469	0.493	
18700	1860.0	1RB	Top	21.28	21.50	-1.96	1.052	0.442	0.465	
18700	1860.0	1RB	Bottom	21.28	21.50	3.78	1.052	0.416	0.438	
18700	1860.0	50%RB	Front	20.13	20.50	0.54	1.089	0.243	0.265	
18700	1860.0	50%RB	Rear	20.13	20.50	-3.64	1.089	0.556	0.605	
18700	1860.0	50%RB	Left	20.13	20.50	2.05	1.089	0.231	0.252	
18700	1860.0	50%RB	Top	20.13	20.50	-0.55	1.089	0.218	0.237	
18700	1860.0	50%RB	Bottom	20.13	20.50	3.46	1.089	0.206	0.224	

SAR Values [LTE Band 4]

Ch.	Freq. (MHz)	Channel Type (20M)	Test Position	Conducted Power (dBm)	Maximum Allowed Power (dBm)	Power Drift (%)	Scaling Factor	SAR _{1-g} results(W/kg)		Graph Results
								Measured	Reported	
measured / reported SAR numbers - Body (hotspot open, distance 0mm)										
20175	1732.5	1RB	Front	20.92	21.00	-0.75	1.019	0.492	0.501	
20175	1732.5	1RB	Rear	20.92	21.00	-1.31	1.019	0.995	1.013	Plot 7
20050	1720.0	1RB	Rear	20.92	21.00	3.45	1.019	0.974	0.992	
20300	1745.0	1RB	Rear	20.92	21.00	-0.52	1.019	0.962	0.980	
20175	1732.5	1RB	Left	20.92	21.00	0.64	1.019	0.468	0.477	
20175	1732.5	1RB	Top	20.92	21.00	-1.45	1.019	0.442	0.450	
20175	1732.5	1RB	Bottom	20.92	21.00	-3.87	1.019	0.419	0.427	
20175	1732.5	50%RB	Front	19.97	20.00	0.46	1.007	0.250	0.252	
20175	1732.5	50%RB	Rear	19.97	20.00	-2.06	1.007	0.446	0.449	
20175	1732.5	50%RB	Left	19.97	20.00	1.49	1.007	0.241	0.243	
20175	1732.5	50%RB	Top	19.97	20.00	2.64	1.007	0.231	0.233	
20175	1732.5	50%RB	Bottom	19.97	20.00	-0.06	1.007	0.218	0.220	



**SAR Values [LTE Band 5]**

Ch.	Freq. (MHz)	Channel Type (20M)	Test Position	Conducted Power (dBm)	Maximum Allowed Power (dBm)	Power Drift (%)	Scaling Factor	SAR _{1-g} results(W/kg)		Graph Results
								Measured	Reported	
<i>measured / reported SAR numbers - Body (hotspot open, distance 0mm)</i>										
20643	844.0	1RB	Front	22.38	22.50	-1.05	1.028	0.147	0.151	
20643	844.0	1RB	Rear	22.38	22.50	0.00	1.028	0.531	0.546	Plot 8
20407	829.0	1RB	Rear	22.38	22.50	0.45	1.028	0.519	0.534	
20525	836.5	1RB	Rear	22.38	22.50	-2.20	1.028	0.502	0.516	
20643	844.0	1RB	Left	22.38	22.50	2.66	1.028	0.125	0.129	
20643	844.0	1RB	Top	22.38	22.50	1.54	1.028	0.112	0.115	
20643	844.0	1RB	Bottom	22.38	22.50	-2.05	1.028	0.100	0.103	
20407	829.0	50%RB	Front	21.33	21.50	1.47	1.040	0.074	0.077	
20407	829.0	50%RB	Rear	21.33	21.50	3.88	1.040	0.272	0.283	
20407	829.0	50%RB	Left	21.33	21.50	-3.64	1.040	0.055	0.057	
20407	829.0	50%RB	Top	21.33	21.50	0.58	1.040	0.036	0.037	
20407	829.0	50%RB	Bottom	21.33	21.50	-1.11	1.040	0.028	0.029	

SAR Values [LTE Band 7]

Ch.	Freq. (MHz)	Channel Type (20M)	Test Position	Conducted Power (dBm)	Maximum Allowed Power (dBm)	Power Drift (%)	Scaling Factor	SAR _{1-g} results(W/kg)		Graph Results
								Measured	Reported	
<i>measured / reported SAR numbers - Body (hotspot open, distance 0mm)</i>										
21100	2535.0	1RB	Front	20.44	20.50	-0.10	1.014	0.419	0.425	
21100	2535.0	1RB	Rear	20.44	20.50	-0.23	1.014	0.803	0.814	Plot 9
20850	2510.0	1RB	Rear	20.44	20.50	-1.41	1.014	0.794	0.805	
21350	2560.0	1RB	Rear	20.44	20.50	0.64	1.014	0.779	0.790	
21100	2535.0	1RB	Left	20.44	20.50	0.70	1.014	0.398	0.404	
21100	2535.0	1RB	Top	20.44	20.50	3.45	1.014	0.377	0.382	
21100	2535.0	1RB	Bottom	20.44	20.50	0.69	1.014	0.362	0.367	
21100	2535.0	50%RB	Front	19.59	20.00	-1.06	1.099	0.223	0.245	
21100	2535.0	50%RB	Rear	19.59	20.00	4.44	1.099	0.405	0.445	
21100	2535.0	50%RB	Left	19.59	20.00	3.64	1.099	0.208	0.229	
21100	2535.0	50%RB	Top	19.59	20.00	2.98	1.099	0.190	0.209	
21100	2535.0	50%RB	Bottom	19.59	20.00	-1.56	1.099	0.177	0.195	

SAR Values [LTE Band 12]

Ch.	Freq. (MHz)	Channel Type (20M)	Test Position	Conducted Power (dBm)	Maximum Allowed Power (dBm)	Power Drift (%)	Scaling Factor	SAR _{1-g} results(W/kg)		Graph Results
								Measured	Reported	
<i>measured / reported SAR numbers - Body (hotspot open, distance 0mm)</i>										
23060	704.0	1RB	Front	22.91	23.00	2.38	1.021	0.024	0.025	
23060	704.0	1RB	Rear	22.91	23.00	-3.21	1.021	0.056	0.057	Plot 10
23095	707.5	1RB	Rear	22.91	23.00	0.21	1.021	0.048	0.049	
23130	711.0	1RB	Rear	22.91	23.00	-3.38	1.021	0.041	0.042	
23060	704.0	1RB	Left	22.91	23.00	3.45	1.021	0.018	0.018	
23060	704.0	1RB	Top	22.91	23.00	0.56	1.021	0.016	0.016	
23060	704.0	1RB	Bottom	22.91	23.00	1.34	1.021	0.015	0.015	
23095	707.5	50%RB	Front	21.88	22.00	-2.02	1.028	0.013	0.013	
23095	707.5	50%RB	Rear	21.88	22.00	4.78	1.028	0.024	0.025	
23095	707.5	50%RB	Left	21.88	22.00	3.64	1.028	0.012	0.012	
23095	707.5	50%RB	Top	21.88	22.00	0.52	1.028	0.008	0.008	
23095	707.5	50%RB	Bottom	21.88	22.00	3.33	1.028	0.006	0.006	



**SAR Values [LTE Band 17]**

Ch.	Freq. (MHz)	Channel Type (20M)	Test Position	Conducted Power (dBm)	Maximum Allowed Power (dBm)	Power Drift (%)	Scaling Factor	SAR _{1-g} results(W/kg)		Graph Results
								Measured	Reported	
<i>measured / reported SAR numbers - Body (hotspot open, distance 0mm)</i>										
23790	710.0	1RB	Front	22.76	23.00	-0.14	1.057	0.025	0.026	
23790	710.0	1RB	Rear	22.76	23.00	-0.05	1.057	0.058	0.061	Plot 11
23780	709.0	1RB	Rear	22.76	23.00	2.21	1.057	0.049	0.052	
23800	711.0	1RB	Rear	22.76	23.00	-4.78	1.057	0.038	0.040	
23790	710.0	1RB	Left	22.76	23.00	3.45	1.057	0.020	0.021	
23790	710.0	1RB	Top	22.76	23.00	0.12	1.057	0.017	0.018	
23790	710.0	1RB	Bottom	22.76	23.00	3.05	1.057	0.015	0.016	
23790	710.0	50%RB	Front	21.87	22.00	-2.22	1.030	0.013	0.013	
23790	710.0	50%RB	Rear	21.87	22.00	3.46	1.030	0.031	0.032	
23790	710.0	50%RB	Left	21.87	22.00	-0.89	1.030	0.011	0.011	
23790	710.0	50%RB	Top	21.87	22.00	3.77	1.030	0.007	0.007	
23790	710.0	50%RB	Bottom	21.87	22.00	-4.65	1.030	0.005	0.005	

SAR Values [LTE Band 25]

Ch.	Freq. (MHz)	Channel Type (20M)	Test Position	Conducted Power (dBm)	Maximum Allowed Power (dBm)	Power Drift (%)	Scaling Factor	SAR _{1-g} results(W/kg)		Graph Results
								Measured	Reported	
<i>measured / reported SAR numbers - Body (hotspot open, distance 0mm)</i>										
26047	1860.0	1RB	Front	22.40	22.50	0.27	1.023	0.714	0.731	
26047	1860.0	1RB	Rear	22.40	22.50	-0.69	1.023	1.128	1.154	Plot 12
26365	1882.5	1RB	Rear	22.40	22.50	3.45	1.023	1.096	1.122	
26675	1905.0	1RB	Rear	22.40	22.50	0.56	1.023	1.008	1.031	
26047	1860.0	1RB	Left	22.40	22.50	2.89	1.023	0.689	0.705	
26047	1860.0	1RB	Top	22.40	22.50	1.64	1.023	0.677	0.693	
26047	1860.0	1RB	Bottom	22.40	22.50	-4.99	1.023	0.648	0.663	
26047	1860.0	50%RB	Front	21.26	21.50	3.08	1.057	0.360	0.380	
26047	1860.0	50%RB	Rear	21.26	21.50	1.03	1.057	0.562	0.594	
26047	1860.0	50%RB	Left	21.26	21.50	-1.40	1.057	0.348	0.368	
26047	1860.0	50%RB	Top	21.26	21.50	-0.92	1.057	0.332	0.351	
26047	1860.0	50%RB	Bottom	21.26	21.50	3.64	1.057	0.314	0.332	

SAR Values [LTE Band 26]

Ch.	Freq. (MHz)	Channel Type (20M)	Test Position	Conducted Power (dBm)	Maximum Allowed Power (dBm)	Power Drift (%)	Scaling Factor	SAR _{1-g} results(W/kg)		Graph Results
								Measured	Reported	
<i>measured / reported SAR numbers - Body (hotspot open, distance 0mm)</i>										
26697	819.0	1RB	Front	22.88	23.00	-3.75	1.028	0.166	0.171	
26697	819.0	1RB	Rear	22.88	23.00	-3.06	1.028	0.373	0.383	Plot 13
26865	831.5	1RB	Rear	22.88	23.00	2.03	1.028	0.355	0.365	
27033	844.0	1RB	Rear	22.88	23.00	3.65	1.028	0.342	0.352	
26697	819.0	1RB	Left	22.88	23.00	3.46	1.028	0.148	0.152	
26697	819.0	1RB	Top	22.88	23.00	0.52	1.028	0.129	0.133	
26697	819.0	1RB	Bottom	22.88	23.00	1.36	1.028	0.116	0.119	
26697	819.0	50%RB	Front	21.82	22.00	-0.11	1.042	0.089	0.093	
26697	819.0	50%RB	Rear	21.82	22.00	3.05	1.042	0.140	0.146	
26697	819.0	50%RB	Left	21.82	22.00	4.33	1.042	0.077	0.080	
26697	819.0	50%RB	Top	21.82	22.00	-2.08	1.042	0.059	0.061	
26697	819.0	50%RB	Bottom	21.82	22.00	1.74	1.042	0.044	0.046	



**SAR Values [LTE Band 38]**

Ch.	Freq. (MHz)	Channel Type (20M)	Test Position	Conducted Power (dBm)	Maximum Allowed Power (dBm)	Power Drift (%)	Scaling Factor	SAR _{1-g} results(W/kg)		Graph Results
								Measured	Reported	
measured / reported SAR numbers - Body (hotspot open, distance 0mm)										
37850	2610.0	1RB	Front	20.81	21.00	-0.35	1.045	0.502	0.524	
37850	2610.0	1RB	Rear	20.81	21.00	-0.03	1.045	0.895	0.935	Plot 14
37850	2580.0	1RB	Rear	20.81	21.00	3.45	1.045	0.877	0.916	
38000	2595.0	1RB	Rear	20.81	21.00	0.12	1.045	0.869	0.908	
37850	2610.0	1RB	Left	20.81	21.00	3.64	1.045	0.487	0.509	
37850	2610.0	1RB	Top	20.81	21.00	-2.05	1.045	0.465	0.486	
37850	2610.0	1RB	Bottom	20.81	21.00	1.44	1.045	0.447	0.467	
37850	2610.0	50%RB	Front	19.62	20.00	-0.78	1.091	0.300	0.327	
37850	2610.0	50%RB	Rear	19.62	20.00	3.56	1.091	0.452	0.493	
37850	2610.0	50%RB	Left	19.62	20.00	-2.05	1.091	0.287	0.313	
37850	2610.0	50%RB	Top	19.62	20.00	1.69	1.091	0.269	0.294	
37850	2610.0	50%RB	Bottom	19.62	20.00	3.69	1.091	0.250	0.273	

SAR Values [LTE Band 41]

Ch.	Freq. (MHz)	Channel Type (10M)	Test Position	Conducted Power (dBm)	Maximum Allowed Power (dBm)	Power Drift (%)	Scaling Factor	SAR _{1-g} results(W/kg)		Graph Results
								Measured	Reported	
measured / reported SAR numbers - Body (hotspot open, distance 0mm)										
41490	2680.0	1RB	Front	23.52	24.00	-0.88	1.117	0.243	0.271	
41490	2680.0	1RB	Rear	23.52	24.00	-0.06	1.117	0.941	1.051	Plot 15
39750	2506.0	1RB	Rear	23.52	24.00	1.45	1.117	0.933	1.042	
40620	2593.0	1RB	Rear	23.52	24.00	0.52	1.117	0.918	1.025	
41490	2680.0	1RB	Left	23.52	24.00	3.67	1.117	0.225	0.251	
41490	2680.0	1RB	Top	23.52	24.00	0.88	1.117	0.216	0.241	
41490	2680.0	1RB	Bottom	23.52	24.00	-3.33	1.117	0.197	0.220	
41490	2680.0	50%RB	Front	22.34	22.50	-2.04	1.038	0.226	0.234	
41490	2680.0	50%RB	Rear	22.34	22.50	2.89	1.038	0.480	0.498	
41490	2680.0	50%RB	Left	22.34	22.50	1.08	1.038	0.214	0.222	
41490	2680.0	50%RB	Top	22.34	22.50	3.40	1.038	0.208	0.216	
41490	2680.0	50%RB	Bottom	22.34	22.50	-2.80	1.038	0.189	0.196	

SAR Values [LTE Band 66]

Ch.	Freq. (MHz)	Channel Type (20M)	Test Position	Conducted Power (dBm)	Maximum Allowed Power (dBm)	Power Drift (%)	Scaling Factor	SAR _{1-g} results(W/kg)		Graph Results
								Measured	Reported	
measured / reported SAR numbers - Body (hotspot open, distance 0mm)										
132572	1770.0	1RB	Front	21.70	22.00	0.64	1.072	0.411	0.440	
132572	1770.0	1RB	Rear	21.70	22.00	-0.05	1.072	0.701	0.751	Plot 16
132072	1720.0	1RB	Rear	21.70	22.00	-3.64	1.072	0.694	0.744	
132422	1755.0	1RB	Rear	21.70	22.00	2.98	1.072	0.672	0.720	
132572	1770.0	1RB	Left	21.70	22.00	4.45	1.072	0.402	0.431	
132572	1770.0	1RB	Top	21.70	22.00	-3.12	1.072	0.387	0.415	
132572	1770.0	1RB	Bottom	21.70	22.00	2.06	1.072	0.366	0.392	
132072	1720.0	50%RB	Front	20.78	21.00	3.87	1.052	0.211	0.222	
132572	1770.0	50%RB	Rear	20.78	21.00	-3.45	1.052	0.354	0.372	
132572	1770.0	50%RB	Left	20.78	21.00	1.02	1.052	0.201	0.211	
132572	1770.0	50%RB	Top	20.78	21.00	-4.70	1.052	0.186	0.196	
132572	1770.0	50%RB	Bottom	20.78	21.00	3.65	1.052	0.177	0.186	



**SAR Values [WIFI2.4G]**

Ch.	Freq. (MHz)	Service	Test Position	Conducted Power (dBm)	Maximum Allowed Power (dBm)	Power Drift (%)	Scaling Factor	SAR _{1-g} results(W/kg)		Graph Results
								Measured	Reported	
measured / reported SAR numbers - Body (hotspot open, distance 0mm)										
1	2412	802.11b	Front	15.58	16.00	0.83	1.102	0.077	0.085	
1	2412	802.11b	Rear	15.58	16.00	-0.14	1.102	0.101	0.111	Plot 17
6	2437	802.11b	Rear	15.58	16.00	1.54	1.102	0.091	0.100	
11	2462	802.11b	Rear	15.58	16.00	2.68	1.102	0.085	0.094	
1	2412	802.11b	Bottom	15.58	16.00	3.45	1.102	0.058	0.064	

SAR Values [WIFI5.2G]

Ch.	Freq. (MHz)	Service	Test Position	Conducted Power (dBm)	Maximum Allowed Power (dBm)	Power Drift (%)	Scaling Factor	SAR _{1-g} results(W/kg)		Graph Results
								Measured	Reported	
measured / reported SAR numbers - Body (hotspot open, distance 0mm)										
46	5230	802.11n HT40	Front	14.79	15.00	2.54	1.050	0.041	0.043	
46	5230	802.11n HT40	Rear	14.79	15.00	0.06	1.050	0.090	0.094	Plot 18
38	5190	802.11n HT40	Rear	14.79	15.00	1.65	1.050	0.081	0.085	
46	5230	802.11n HT40	Bottom	14.79	15.00	1.54	1.050	0.028	0.029	

SAR Values [WIFI5.3G]

Ch.	Freq. (MHz)	Service	Test Position	Conducted Power (dBm)	Maximum Allowed Power (dBm)	Power Drift (%)	Scaling Factor	SAR _{1-g} results(W/kg)		Graph Results
								Measured	Reported	
measured / reported SAR numbers - Body (hotspot open, distance 0mm)										
56	5280	802.11n HT40	Front	18.88	19.00	3.74	1.028	0.036	0.037	
56	5280	802.11n HT40	Rear	18.88	19.00	0.09	1.028	0.082	0.084	Plot 19
52	5260	802.11n HT40	Rear	18.88	19.00	-1.45	1.028	0.066	0.068	
56	5280	802.11n HT40	Bottom	18.88	19.00	-1.21	1.028	0.025	0.026	

SAR Values [WIFI5.5G]

Ch.	Freq. (MHz)	Service	Test Position	Conducted Power (dBm)	Maximum Allowed Power (dBm)	Power Drift (%)	Scaling Factor	SAR _{1-g} results(W/kg)		Graph Results
								Measured	Reported	
measured / reported SAR numbers - Body (hotspot open, distance 0mm)										
100	5500	802.11n HT20	Front	10.95	11.00	4.12	1.012	0.050	0.051	
100	5500	802.11n HT20	Rear	10.95	11.00	-0.88	1.012	0.098	0.099	Plot 20
120	5600	802.11n HT20	Rear	10.95	11.00	2.15	1.012	0.074	0.075	
140	5700	802.11n HT20	Rear	10.95	11.00	-3.36	1.012	0.056	0.057	
100	5500	802.11n HT20	Bottom	10.95	11.00	-3.55	1.012	0.038	0.038	

SAR Values [WIFI5.8G]

Ch.	Freq. (MHz)	Service	Test Position	Conducted Power (dBm)	Maximum Allowed Power (dBm)	Power Drift (%)	Scaling Factor	SAR _{1-g} results(W/kg)		Graph Results
								Measured	Reported	
measured / reported SAR numbers - Body (hotspot open, distance 0mm)										
157	5785	802.11a	Front	10.65	11.00	3.45	1.084	0.034	0.037	
157	5785	802.11a	Rear	10.65	11.00	-0.23	1.084	0.076	0.082	Plot 21
149	5745	802.11a	Rear	10.65	11.00	3.33	1.084	0.066	0.072	
165	5825	802.11a	Rear	10.65	11.00	-1.47	1.084	0.053	0.057	
157	5785	802.11a	Bottom	10.65	11.00	-0.77	1.084	0.022	0.024	

Remark:

1. The value with blue color is the maximum SAR Value of each test band.





2. Per FCC KDB Publication 447498 D01, if the reported (scaled) SAR measured at the middle channel or highest output power channel for each test configuration is ≤ 0.8 W/kg then testing at the other channels is optional for such test configuration(s).
3. When the same maximum output power is specified for both bands, begin SAR measurement in U-NII-2A band by applying the OFDM SAR requirements.19 If the highest reported SAR for a test configuration is ≤ 1.2 W/kg, SAR is not required for U-NII-1 band for that configuration (802.11 mode and exposure condition); otherwise, each band is tested independently for SAR.
4. When different maximum output power is specified for the bands, begin SAR measurement in the band with higher specified maximum output power. The highest reported SAR for the tested configuration is adjusted by the ratio of lower to higher specified maximum output power for the two bands. When the adjusted SAR is ≤ 1.2 W/kg, SAR is not required for the band with lower maximum output power in that test configuration; otherwise, each band is tested independently for SAR.



4.3.2 Standalone SAR Test Exclusion Considerations and Estimated SAR

Per KDB447498 requires when the standalone SAR test exclusion of section 4.3.1 is applied to an antenna that transmits simultaneously with other antennas, the standalone SAR must be estimated according to the following to determine simultaneous transmission SAR test exclusion;

- (max. power of channel, including tune-up tolerance, mW)/(min. test separation distance, mm) • [√ f(GHz)/x] W/kg for test separation distances ≤ 50 mm;

where x = 7.5 for 1-g SAR, and x = 18.75 for 10-g SAR.

- 0.4 W/kg for 1-g SAR and 1.0 W/kg for 10-g SAR, when the test separation distances is > 50 mm

Per FCC KD B447498 D01, simultaneous transmission SAR test exclusion may be applied when the sum of the 1-g SAR for all the transmitting antenna in a specific a physical test configuration is ≤1.6 W/Kg. When the sum is greater than the SAR limit, SAR test exclusion is determined by the SAR to peak location separation ratio.

$$\text{Ratio} = \frac{(\text{SAR}_1 + \text{SAR}_2)^{1.5}}{(\text{peak location separation, mm})} < 0.04$$

Estimated stand alone SAR					
Communication system	Frequency (MHz)	Configuration	Maximum Power (dBm)	Separation Distance (mm)	Estimated SAR _{1-g} (W/kg)
Bluetooth*	2450	Hotspot	/	10	/
Bluetooth*	2450	Body-worn	/	10	/

Remark:

1. Bluetooth*- Including Lower power Bluetooth
2. Maximum average power including tune-up tolerance;
3. When the minimum test separation distance is < 5 mm, a distance of 5 mm is applied to determine SAR test exclusion
4. Body as body use distance is 10mm from manufacturer declaration of user manual

4.4. Simultaneous TX SAR Considerations

4.4.1 Introduction

Simultaneous transmission SAR test exclusion is determined for each operating configuration and exposure condition according to the reported standalone SAR of each applicable simultaneous transmitting antenna. The device has 4 antennas, WWAN main antenna, WWAN diversity antenna(RX only), and WiFi antenna supports 2.4Wi-Fi. The 2 TX antennas can always transmit simultaneously. The work mode combination is showed as below table.;

Application Simultaneous Transmission information:

Combination No.	Mode
1	WWAN+WIFI

4.4.2 Evaluation of Simultaneous SAR

Body Hotspot Exposure Conditions

Simultaneous transmission SAR for WiFi and GSM

Test Position	GSM850 Reported SAR1-g (W/kg)	GSM1900 Reported SAR1-g (W/kg)	WiFi2.4G Reported SAR1-g (W/kg)	WiFi5.2G Reported SAR1-g (W/kg)	WiFi5.3G Reported SAR1-g (W/kg)	WiFi5.5G Reported SAR1-g (W/kg)	WiFi5.8G Reported SAR1-g (W/kg)	MAX. ΣSAR1-g (W/kg)	SAR1-g Limit (W/kg)	Peak location separation ratio	Simut Meas. Required
Front	0.190	0.017	0.085	0.043	0.037	0.051	0.037	0.275	1.6	no	no
Rear	0.536	0.041	0.111	0.094	0.084	0.099	0.082	0.647	1.6	no	no
Left	0.170	0.012	/	/	/	/	/	0.170	1.6	no	no
Right	/	/	/	/	/	/	/	/	1.6	no	no
Bottom	0.134	0.004	0.064	0.029	0.026	0.038	0.024	0.198	1.6	no	no
Top	0.152	0.008	/	/	/	/	/	0.152	1.6	no	no



Simultaneous transmission SAR for WiFi and UMTS

Test Position	UMTS Band V Report ed SAR1-g (W/kg)	UMTS Band IV Report ed SAR1-g (W/kg)	UMTS Band II Report ed SAR1-g (W/kg)	WiFi2.4 G Report ed SAR1-g (W/kg)	WiFi5.2 G Report ed SAR1-g (W/kg)	WiFi5.3 G Report ed SAR1-g (W/kg)	WiFi5.5 G Report ed SAR1-g (W/kg)	WiFi5.8 G Report ed SAR1-g (W/kg)	MAX. ΣSAR 1-g (W/kg)	SAR 1-g Limit (W/kg)	Peak location separation ratio	Simut Meas. Required
Front	0.133	0.822	0.669	0.085	0.043	0.037	0.051	0.037	0.907	1.6	no	no
Rear	0.432	1.299	1.215	0.111	0.094	0.084	0.099	0.082	1.410	1.6	no	no
Left	0.116	0.798	0.613	/	/	/	/	/	0.798	1.6	no	no
Right	/	/	/	/	/	/	/	/	/	1.6	no	no
Bottom	0.092	0.754	0.570	0.064	0.029	0.026	0.038	0.024	0.818	1.6	no	no
Top	0.107	0.772	0.596	/	/	/	/	/	0.772	1.6	no	no

SAR for WiFi and LTE

Reported SAR1-g(W/kg)	Test Position					
	Front	Rear	Left	Right	Bottom	Top
LTE Band2	0.509	1.189	0.493	/	0.438	0.465
LTE Band4	0.501	1.013	0.477	/	0.427	0.450
LTE Band5	0.151	0.546	0.129	/	0.103	0.115
LTE Band7	0.425	0.814	0.404	/	0.367	0.382
LTE Band12	0.025	0.057	0.018	/	0.015	0.016
LTE Band17	0.026	0.061	0.021	/	0.016	0.018
LTE Band25	0.731	1.154	0.705	/	0.663	0.693
LTE Band26	0.171	0.383	0.152	/	0.119	0.133
LTE Band38	0.524	0.935	0.509	/	0.467	0.486
LTE Band41	0.271	1.051	0.251	/	0.220	0.241
LTE Band66	0.440	0.751	0.431	/	0.392	0.415
WiFi2.4G	0.085	0.111	/	/	0.064	/
WiFi5.2G	0.043	0.094	/	/	0.029	/
WiFi5.3G	0.037	0.084	/	/	0.026	/
WiFi5.5G	0.051	0.099	/	/	0.038	/
WiFi5.8G	0.037	0.082	/	/	0.024	/
MAX. ΣSAR1-g (W/kg)	0.816	1.300	0.705	/	0.727	0.693
SAR1-g Limit (W/kg)	1.6	1.6	1.6	1.6	1.6	1.6
Peak location separation ratio	no	no	no	no	no	no
Simut Meas. Required	no	no	no	no	no	no

Note:

1. The value with **block** color is the maximum values of standalone
2. The value with blue color is the maximum values of ΣSAR_{1-g}

4.5. SAR Measurement Variability

According to KDB865664, Repeated measurements are required only when the measured SAR is ≥ 0.80 W/kg. If the measured SAR value of the initial repeated measurement is < 1.45 W/kg with ≤ 20% variation, only one repeated measurement is required to reaffirm that the results are not expected to have substantial variations, which may introduce significant compliance concerns. A second repeated measurement is required only if the measured result for the initial repeated measurement is within 10% of the SAR limit and vary by more than 20%, which are often related to device and measurement setup difficulties. The following procedures are applied to determine if repeated measurements are required. The same procedures should be adapted for measurements according to extremity and occupational exposure limits by applying a factor of 2.5 for extremity exposure and a factor of 5 for occupational exposure to the corresponding SAR thresholds.¹⁹ The repeated measurement results must be clearly identified in the SAR report. All measured





SAR, including the repeated results, must be considered to determine compliance and for reporting according to KDB 690783. Repeated measurement is not required when the original highest measured SAR is < 0.80 W/kg; steps 2) through 4) do not apply.

- 3) When the original highest measured SAR is ≥ 0.80 W/kg, repeat that measurement once.
- 4) Perform a second repeated measurement only if the ratio of largest to smallest SAR for the original and first repeated measurements is > 1.20 or when the original or repeated measurement is ≥ 1.45 W/kg ($\sim 10\%$ from the 1-g SAR limit).
- 5) Perform a third repeated measurement only if the original, first or second repeated measurement is ≥ 1.5 W/kg and the ratio of largest to smallest SAR for the original, first and second repeated measurements is > 1.20 .
- 6) Perform a third repeated measurement only if the original, first or second repeated measurement is ≥ 1.5 W/kg and the ratio of largest to smallest SAR for the original, first and second repeated measurements is > 1.20 .

Frequency Band (MHz)	Air Interface	RF Exposure Configuration	Test Position	Repeated SAR (yes/no)	Highest Measured SAR _{1-g} (W/Kg)	First Repeated	
						Measured SAR _{1-g} (W/Kg)	Largest to Smallest SAR Ratio
750	LTE Band 12	Standalone	Body- Rear	no	0.056	n/a	n/a
	LTE Band 17	Standalone	Body- Rear	no	0.058	n/a	n/a
850	GSM 850	Standalone	Body- Rear	no	0.480	n/a	n/a
	WCDMA Band V	Standalone	Body- Rear	no	0.419	n/a	n/a
	LTE Band 5	Standalone	Body- Rear	no	0.531	n/a	n/a
	LTE Band 26	Standalone	Body- Rear	no	0.373	n/a	n/a
1800	WCDMA Band IV	Standalone	Body- Rear	no	1.261	1.118	1.128
	LTE Band 4	Standalone	Body- Rear	no	0.995	0.978	1.017
	LTE Band 66	Standalone	Body- Rear	no	0.701	n/a	n/a
1900	GSM 1900	Standalone	Body- Rear	no	0.037	n/a	n/a
	WCDMA Band II	Standalone	Body- Rear	no	1.171	1.099	1.065
	LTE Band 2	Standalone	Body- Rear	no	1.130	1.089	1.038
	LTE Band 25	Standalone	Body- Rear	no	1.128	1.110	1.016
2450	2.4GWLAN	Standalone	Body- Rear	no	0.101	n/a	n/a
2600	LTE Band 7	Standalone	Body- Rear	no	0.803	0.776	1.035
	LTE Band 38	Standalone	Body- Rear	no	0.895	0.879	1.018
	LTE Band 41	Standalone	Body- Rear	no	0.941	0.931	1.010
5200	5.2GWLAN	Standalone	Body- Rear	no	0.090	n/a	n/a
5300	5.3GWLAN	Standalone	Body- Rear	no	0.082	n/a	n/a
5500	5.5GWLAN	Standalone	Body- Rear	no	0.098	n/a	n/a
5800	5.8GWLAN	Standalone	Body- Rear	no	0.076	n/a	n/a

Remark:

1. Second Repeated Measurement is not required since the ratio of the largest to smallest SAR for the original and first repeated measurement is not > 1.20 or 3 (1-g or 10-g respectively)

4.6. General description of test procedures

1. Test positions as described in the tables above are in accordance with the specified test standard.
2. Tests in body position were performed in that configuration, which generates the highest time based averaged output power (see conducted power results).
3. According to IEEE 1528 the SAR test shall be performed at middle channel. Testing of top and bottom channel is optional.
4. According to KDB 447498 D01 testing of other required channels within the operating mode of a frequency band is not required when the reported 1-g or 10-g SAR for the mid-band or highest output power channel is:
 - ≤ 0.8 W/kg or 2.0 W/kg, for 1-g or 10-g respectively, when the transmission band is ≤ 100 MHz
 - ≤ 0.6 W/kg or 1.5 W/kg, for 1-g or 10-g respectively, when the transmission band is between 100 MHz and 200 MHz
 - ≤ 0.4 W/kg or 1.0 W/kg, for 1-g or 10-g respectively, when the transmission band is ≥ 200 MHz





5. IEEE 1528-2003 require the middle channel to be tested first. This generally applies to wireless devices that are designed to operate in technologies with tight tolerances for maximum output power variations across channels in the band. When the maximum output power variation across the required test channels is $> \frac{1}{2}$ dB, instead of the middle channel, the highest output power channel must be used.
6. When the same maximum output power is specified for both bands, begin SAR measurement in U-NII-2A band by applying the OFDM SAR requirements.19 If the highest reported SAR for a test configuration is ≤ 1.2 W/kg, SAR is not required for U-NII-1 band for that configuration (802.11 mode and exposure condition); otherwise, each band is tested independently for SAR.
7. When different maximum output power is specified for the bands, begin SAR measurement in the band with higher specified maximum output power. The highest reported SAR for the tested configuration is adjusted by the ratio of lower to higher specified maximum output power for the two bands. When the adjusted SAR is ≤ 1.2 W/kg, SAR is not required for the band with lower maximum output power in that test configuration; otherwise, each band is tested independently for SAR.

4.7. Measurement Uncertainty (450MHz-6GHz)

Not required as SAR measurement uncertainty analysis is required in SAR reports only when the highest measured SAR in a frequency band is ≥ 1.5 W/kg for 1-g SAR according to KDB865664D01.



Shenzhen LCS Compliance Testing Laboratory Ltd.

Add: 101, 201 Bldg A & 301 Bldg C, Juji Industrial Park Yabianxueziwei, Shajing Street, Baoan District, Shenzhen, 518000, China

Tel: +(86) 0755-82591330 | E-mail: webmaster@lcs-cert.com | Web: www.lcs-cert.com

Scan code to check authenticity

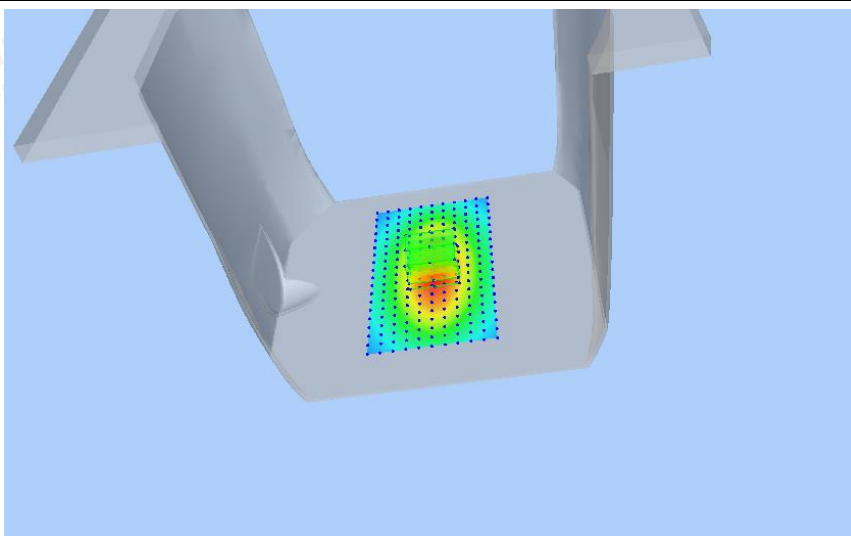
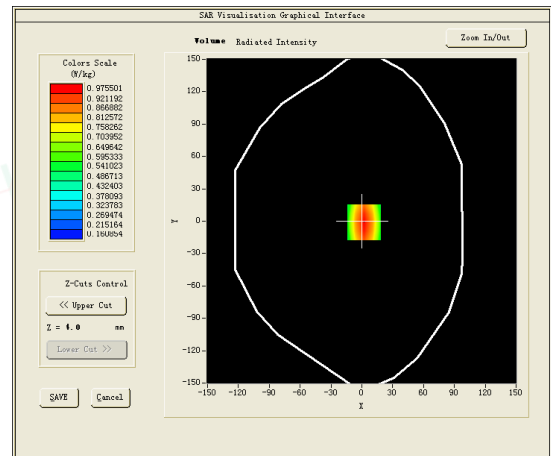
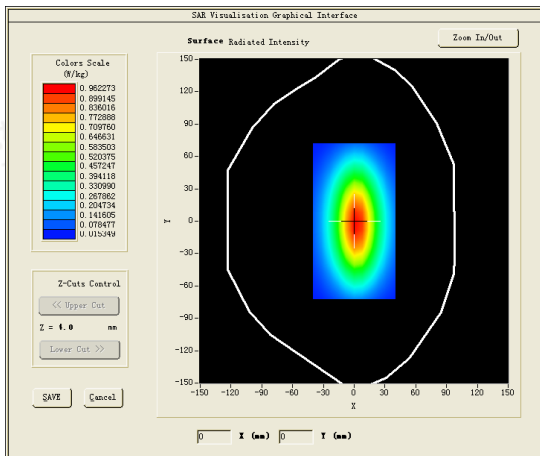
4.8. System Check Results

Test mode:750MHz(Head)
 Product Description:Validation
 Model:Dipole SID750
 E-Field Probe: SSE2(SN 25/22 EPGO376)
 Test Date: September 14, 2022

Medium(liquid type)	HSL_750
Frequency (MHz)	750.0000
Relative permittivity (real part)	57.24
Conductivity (S/m)	0.95
Input power	100mW
Crest Factor	1.0
Conversion Factor	1.69
Variation (%)	1.420000
SAR 10g (W/Kg)	0.562452
SAR 1g (W/Kg)	0.824413

SURFACE SAR

VOLUME SAR

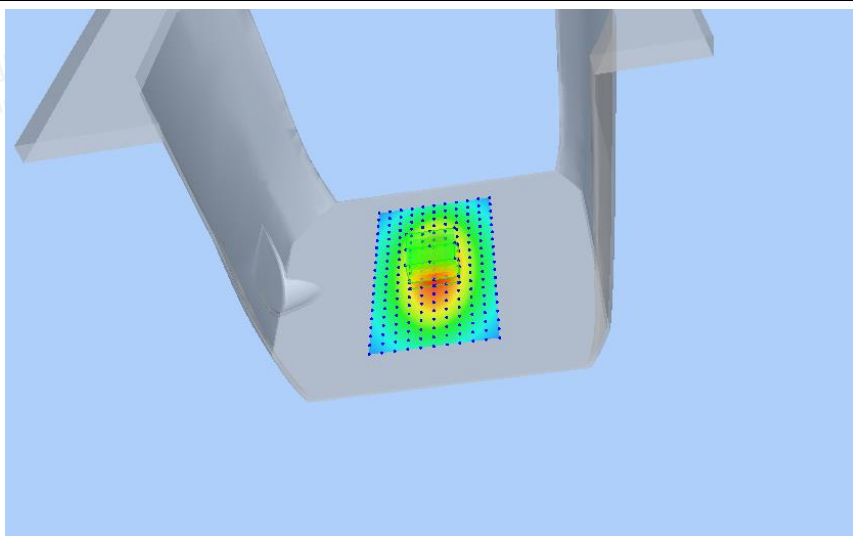
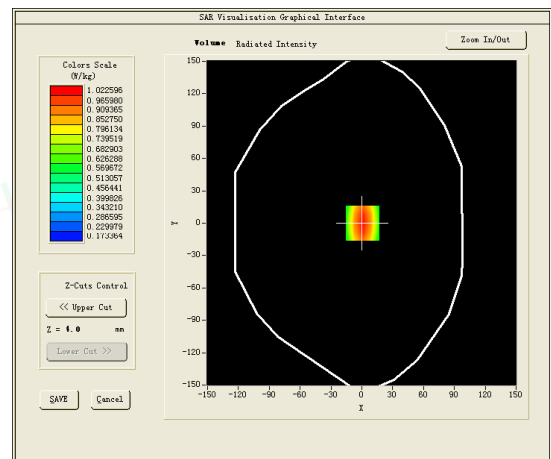
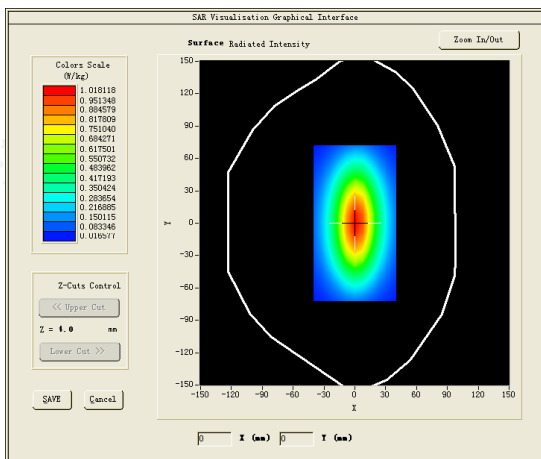


Test mode:835MHz(Head)
 Product Description:Validation
 Model:Dipole SID835
 E-Field Probe:SSE2(SN 25/22 EPGO376)
 Test Date: September 15, 2022

Medium(liquid type)	HSL_850
Frequency (MHz)	835.0000
Relative permittivity (real part)	42.82
Conductivity (S/m)	0.92
Input power	100mW
Crest Factor	1.0
Conversion Factor	1.75
Variation (%)	2.030000
SAR 10g (W/Kg)	0.639132
SAR 1g (W/Kg)	0.923488

SURFACE SAR

VOLUME SAR

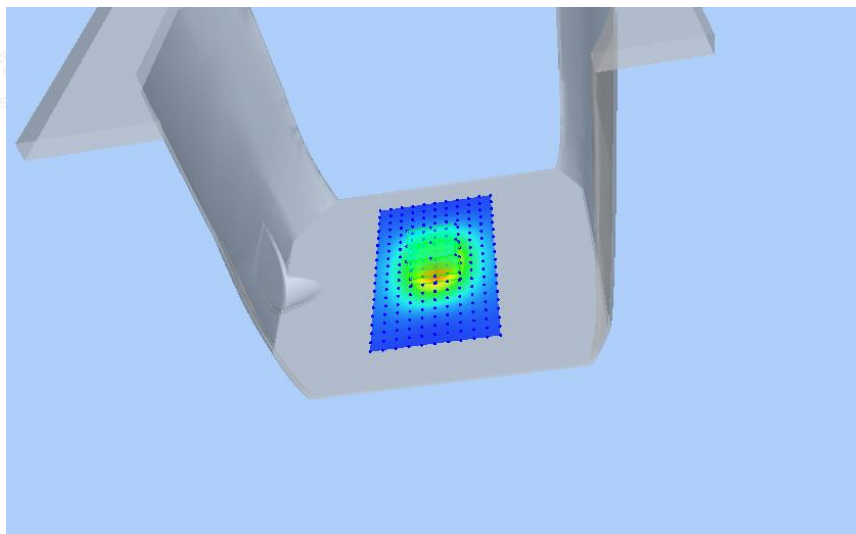
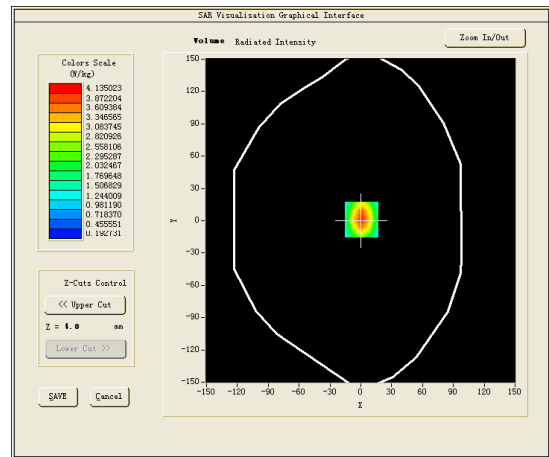
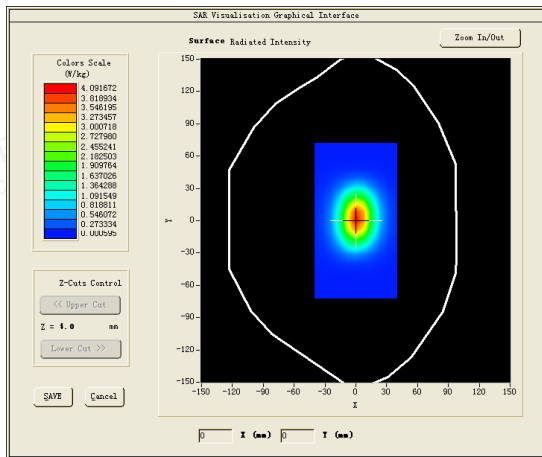


Test mode:1800MHz(Head)
 Product Description:Validation
 Model :Dipole SID1800
 E-Field Probe:SSE2(SN 25/22 EPGO376)
 Test Date: September 16, 2022

Medium(liquid type)	HSL_1800
Frequency (MHz)	1800.0000
Relative permittivity (real part)	52.11
Conductivity (S/m)	1.56
Input power	100mW
Crest Factor	1.0
Conversion Factor	2.09
Variation (%)	1.620000
SAR 10g (W/Kg)	2.055283
SAR 1g (W/Kg)	3.853085

SURFACE SAR

VOLUME SAR

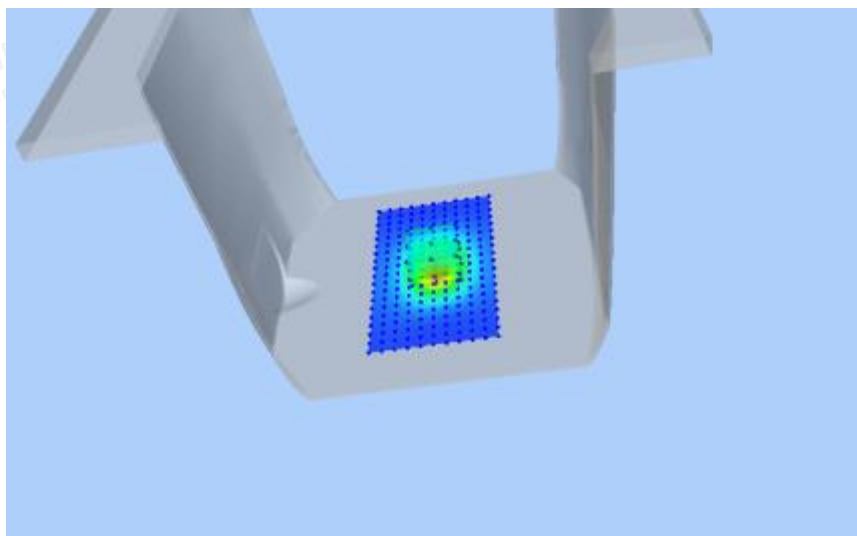
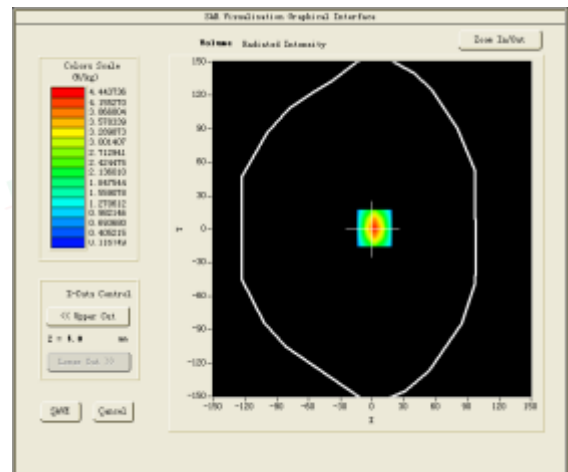
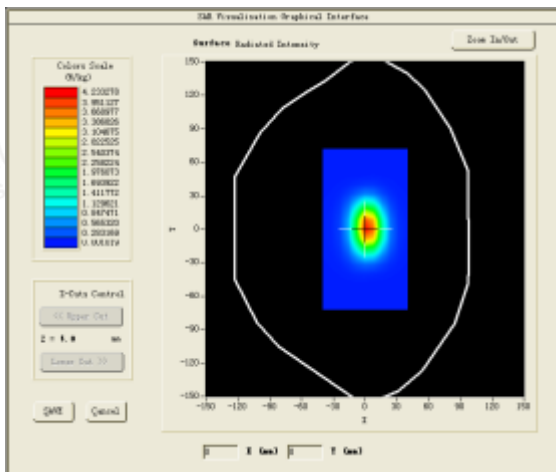


Test mode:1900MHz(Head)
 Product Description:Validation
 Model :Dipole SID1900
 E-Field Probe:SSE2(SN 25/22 EPGO376)
 Test Date: September 19, 2022

Medium(liquid type)	HSL_1900
Frequency (MHz)	1900.0000
Relative permittivity (real part)	38.56
Conductivity (S/m)	1.37
Input power	100mW
Crest Factor	1.0
Conversion Factor	2.14
Variation (%)	-1.200000
SAR 10g (W/Kg)	2.096260
SAR 1g (W/Kg)	3.911162

SURFACE SAR

VOLUME SAR

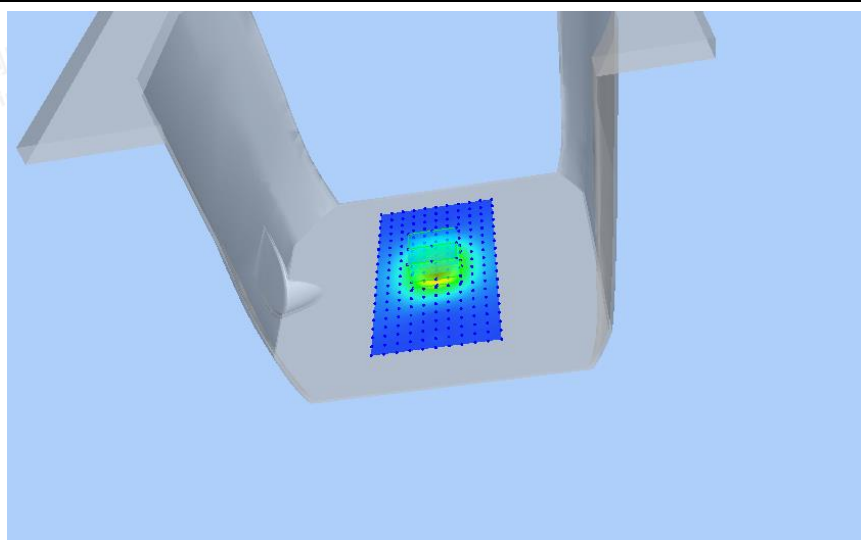
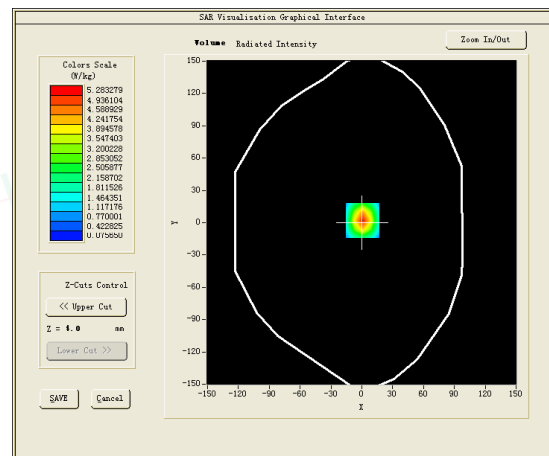
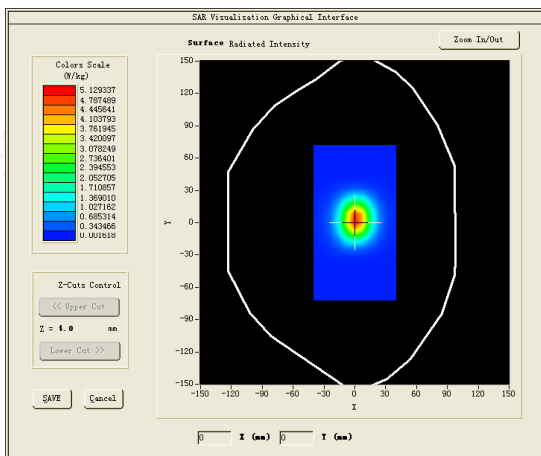


Test mode:2450MHz(Head)
 Product Description:Validation
 Model:Dipole SID2450
 E-Field Probe:SSE2(SN 25/22 EPGO376)
 Test Date: September 20, 2022

Medium(liquid type)	HSL_2450
Frequency (MHz)	2450.0000
Relative permittivity (real part)	39.70
Conductivity (S/m)	1.84
Input power	100mW
Crest Factor	1.0
Conversion Factor	2.60
Variation (%)	-0.080000
SAR 10g (W/Kg)	2.521463
SAR 1g (W/Kg)	5.487016

SURFACE SAR

VOLUME SAR

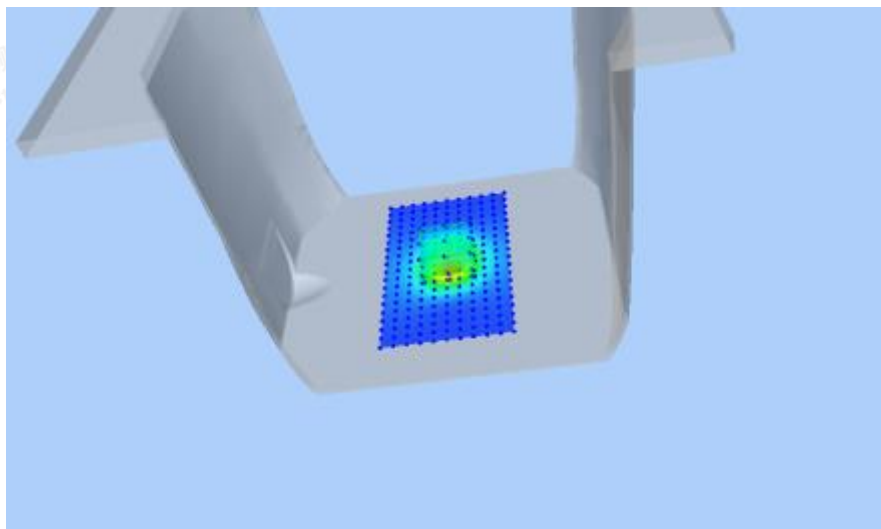
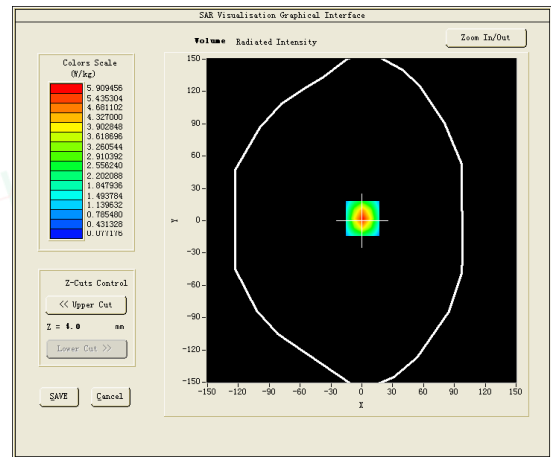
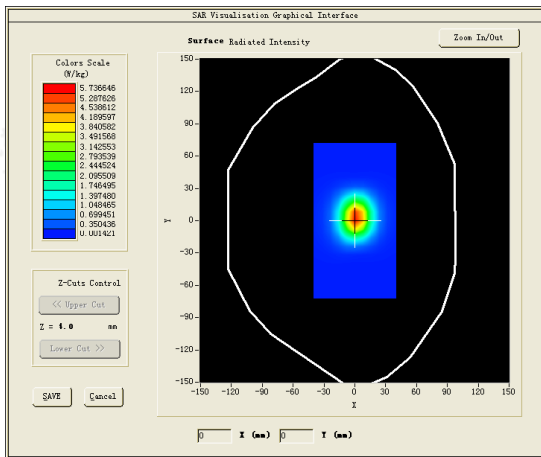


Test mode:2600MHz(Head)
 Product Description:Validation
 Model:Dipole SID2600
 E-Field Probe: SSE2(SN 25/22 EPGO376)
 Test Date: September 21, 2022

Medium(liquid type)	HSL_2600
Frequency (MHz)	2600.0000
Relative permittivity (real part)	38.43
Conductivity (S/m)	1.92
Input power	100mW
Crest Factor	1.0
Conversion Factor	2.39
Variation (%)	3.140000
SAR 10g (W/Kg)	2.246235
SAR 1g (W/Kg)	5.747023

SURFACE SAR

VOLUME SAR

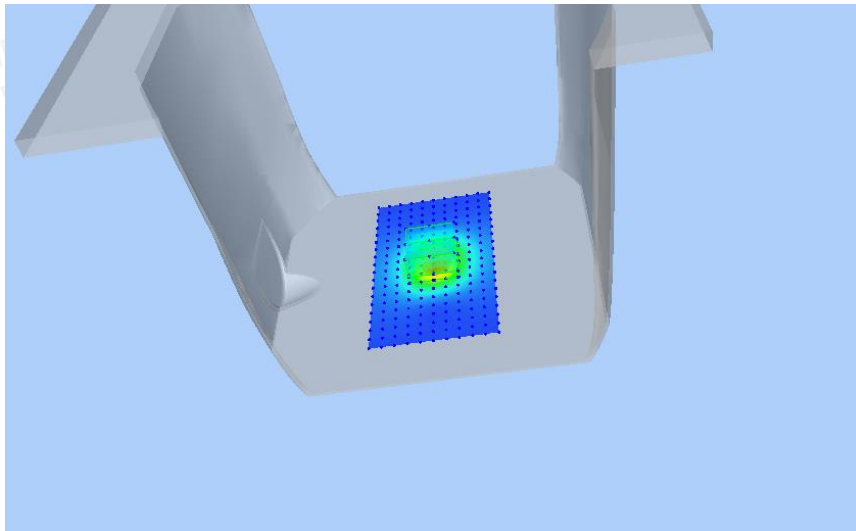
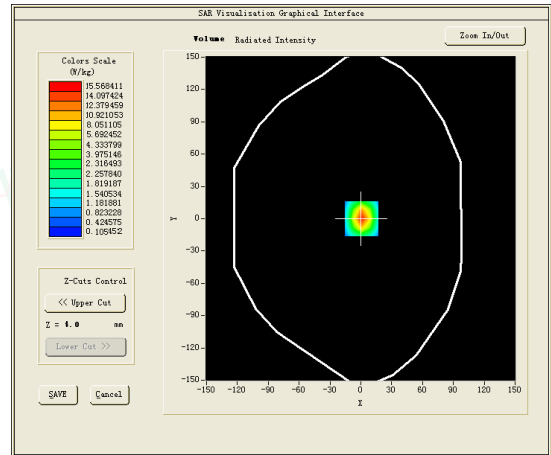
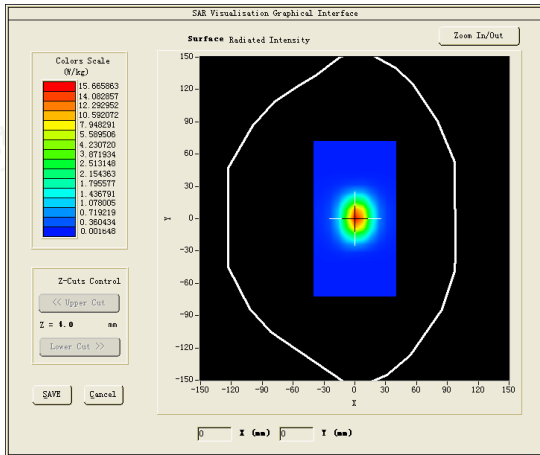


Test mode:5200MHz(Head)
 Product Description:Validation
 Model:Dipole SID5000
 E-Field Probe: SSE2(SN 25/22 EPGO376)
 Test Date: September 22, 2022

Medium(liquid type)	HSL_5000
Frequency (MHz)	5200.0000
Relative permittivity (real part)	48.80
Conductivity (S/m)	4.66
Input power	100mW
Crest Factor	1.0
Conversion Factor	1.85
Variation (%)	-3.020000
SAR 10g (W/Kg)	5.512210
SAR 1g (W/Kg)	15.467034

SURFACE SAR

VOLUME SAR

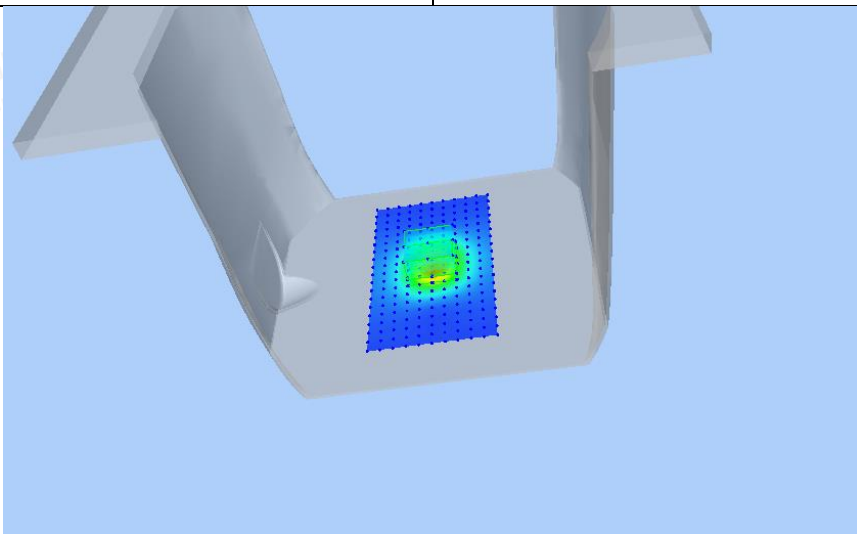
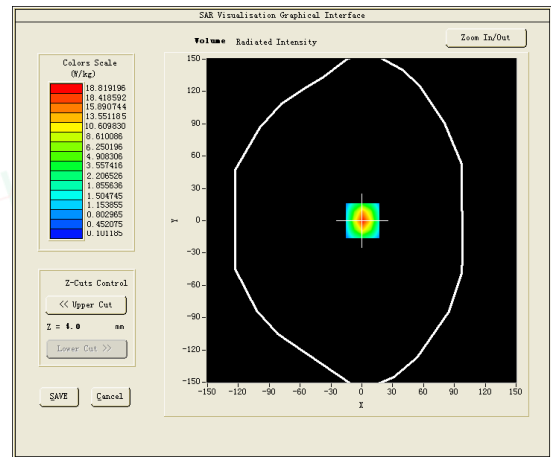
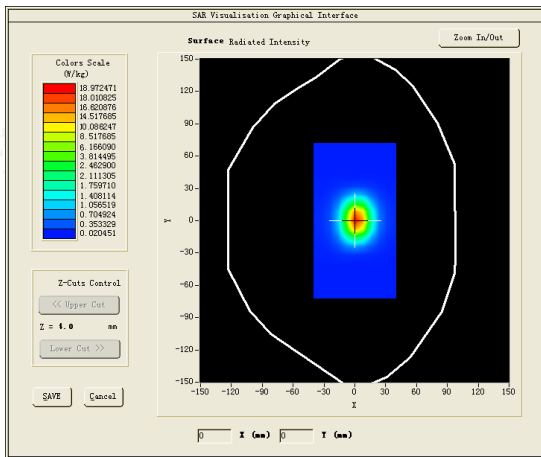


Test mode:5300MHz(Head)
 Product Description:Validation
 Model:Dipole SID5000
 E-Field Probe: SSE2(SN 25/22 EPGO376)
 Test Date: September 23, 2022

Medium(liquid type)	HSL_5000
Frequency (MHz)	5280.0000
Relative permittivity (real part)	35.95
Conductivity (S/m)	5.27
Input power	100mW
Crest Factor	1.0
Conversion Factor	2.07
Variation (%)	3.210000
SAR 10g (W/Kg)	5.731120
SAR 1g (W/Kg)	16.456222

SURFACE SAR

VOLUME SAR

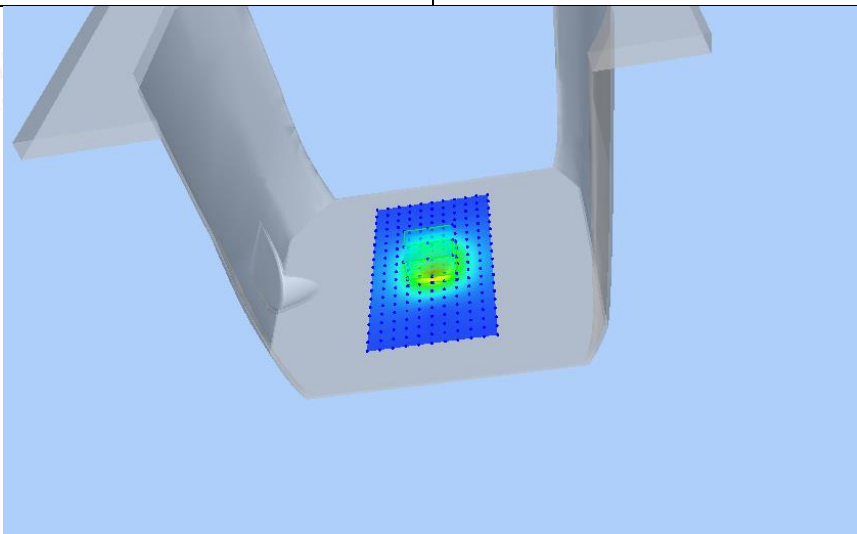
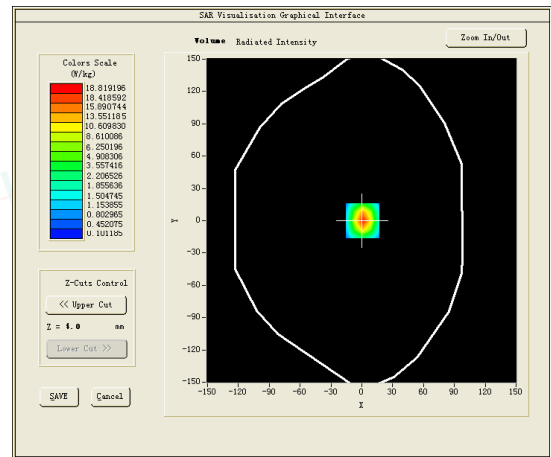
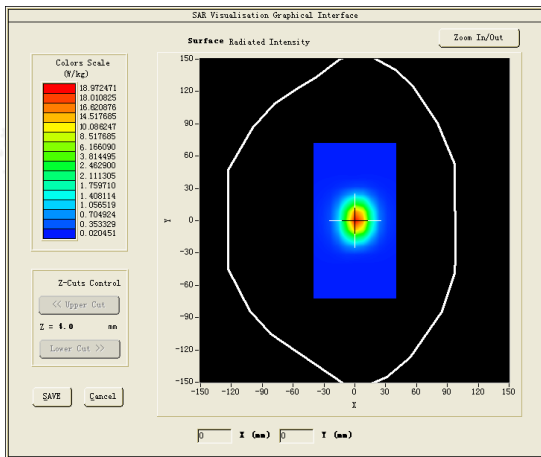


Test mode:5500MHz(Head)
 Product Description:Validation
 Model:Dipole SID5000
 E-Field Probe: SSE2(SN 25/22 EPGO376)
 Test Date: September 26, 2022

Medium(liquid type)	HSL_5000
Frequency (MHz)	5600.0000
Relative permittivity (real part)	35.68
Conductivity (S/m)	5.27
Input power	100mW
Crest Factor	1.0
Conversion Factor	2.19
Variation (%)	1.000000
SAR 10g (W/Kg)	5.972036
SAR 1g (W/Kg)	17.225212

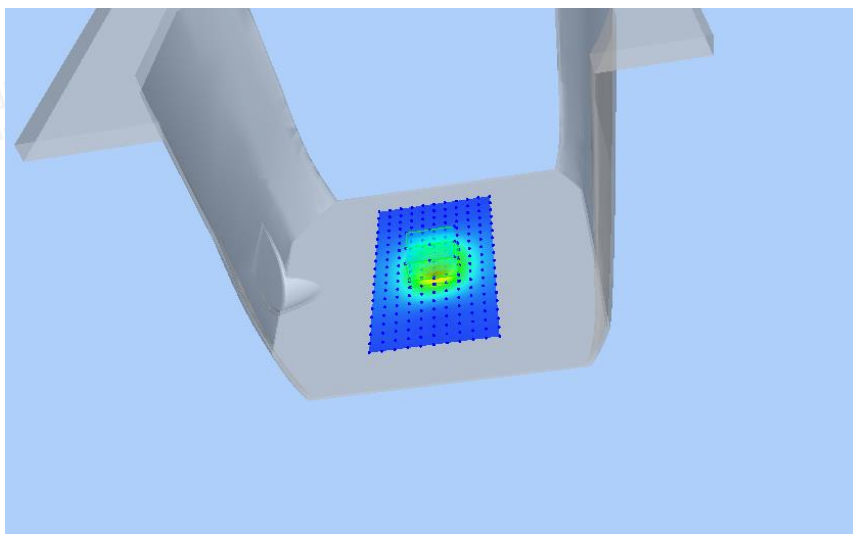
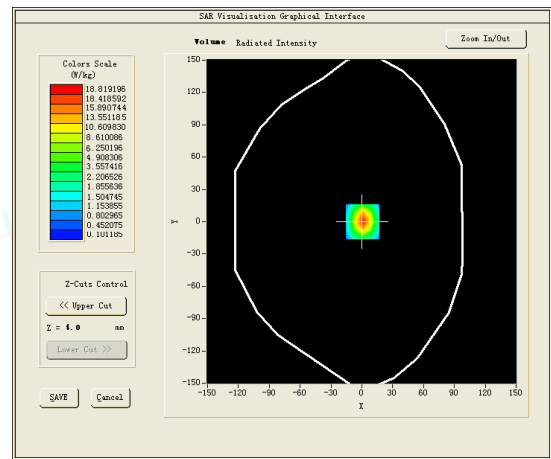
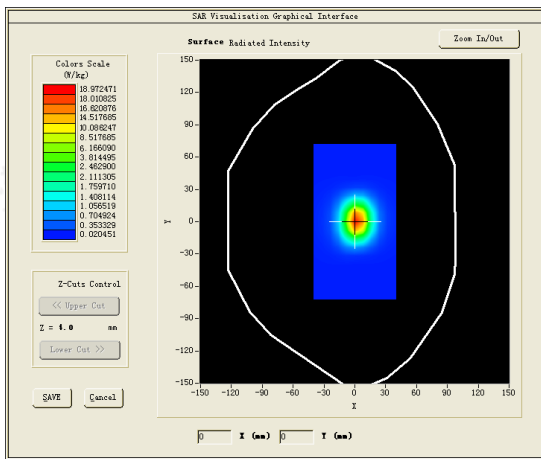
SURFACE SAR

VOLUME SAR



Test mode:5800MHz(Head)
 Product Description:Validation
 Model:Dipole SID5000
 E-Field Probe: SSE2(SN 25/22 EPGO376)
 Test Date: September 29, 2022

Medium(liquid type)	HSL_5000
Frequency (MHz)	5800.0000
Relative permittivity (real part)	48.46
Conductivity (S/m)	5.27
Input power	100mW
Crest Factor	1.0
Conversion Factor	2.01
Variation (%)	-1.010000
SAR 10g (W/Kg)	6.177085
SAR 1g (W/Kg)	18.293250
SURFACE SAR	VOLUME SAR



4.9. SAR Test Graph Results

SAR plots for the highest measured SAR in each exposure configuration, wireless mode and frequency band combination

#1 Test Mode: GSM850MHz, Middle channel(Body Rear Side)

Product Description:BlueCash-50

Model:BlueCash-50

Test Date: September 15, 2022

Medium(liquid type)	HSL_850
Frequency (MHz)	836.6000
Relative permittivity (real part)	42.82
Conductivity (S/m)	0.92
E-Field Probe	SN 25/22 EPG0376
Crest Factor	2.0
Conversion Factor	1.75
Sensor	4mm
Area Scan	dx=8mm dy=8mm
Zoom Scan	5x5x7,dx=8mm dy=8mm dz=5mm
Variation (%)	0.340000
SAR 10g (W/Kg)	0.321359
SAR 1g (W/Kg)	0.480346
SURFACE SAR	VOLUME SAR

