



Document	Datasheet
Type	PCB Trace Antenna
Application	2.4GHz
Model	HAMT2002 (LF)

DATASHEET

Oct , 2014

Contents

1. Applications	3
2. Features	3
3. Specifications	4
3.1 Electrical Specifications	4
3.2 Mechanical Specification	4
4. Matching Component	4
4.1 Ant Circuit.....	4
4.2 Matching value	4
5. Measurement Result	5
5.1 Typical Measurement Result (Smith Chart & Return Loss)	5
5.2 Typical Measurement Result (Gain).....	5
5.3 Typical Measurement Result (Radiation pattern, 2.44GHz)	6
6 Revision History	7

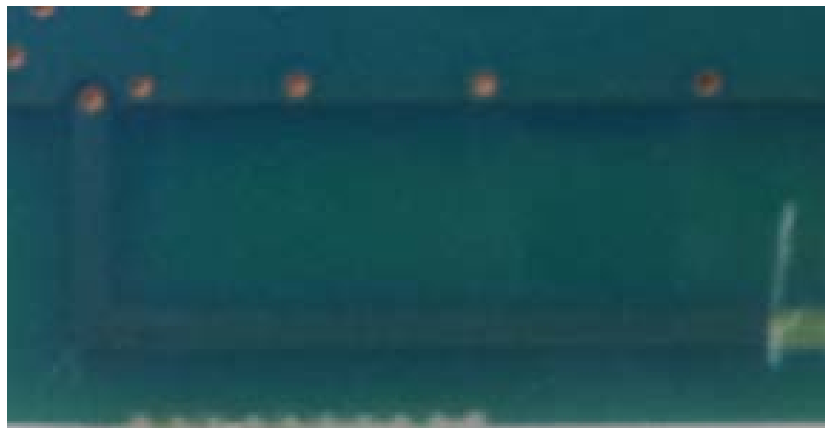
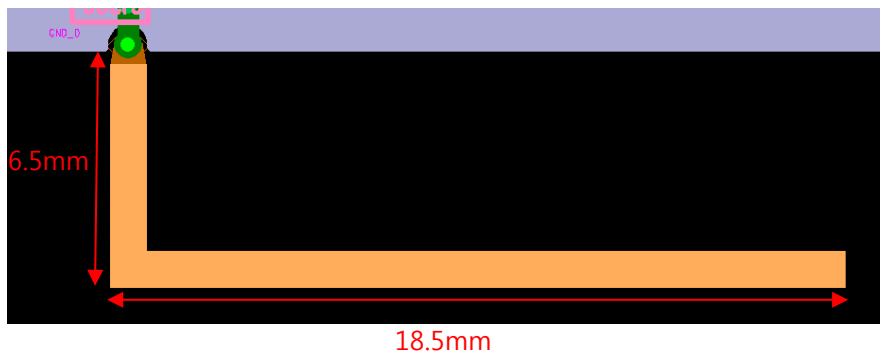
1. Applications

Bluetooth
ZigBee
ISM 2.4GHz Wireless Devices

2. Features

Monopole type PCB trace antenna

Size(18.5 x 1.2mm)



3. Specifications

3.1 Electrical Specifications

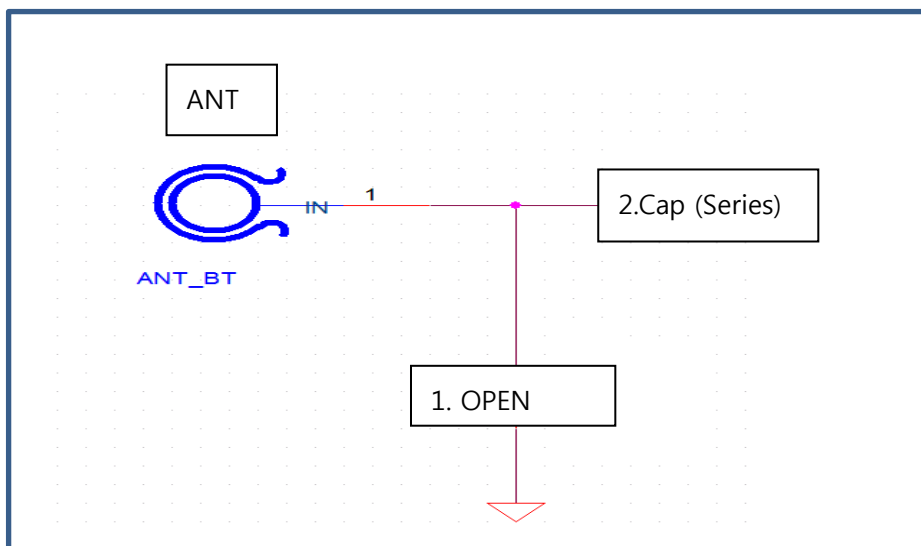
No	Item	Spec	Remark
1	Frequency Range[GHz]	2.4~2.485	
2	Peak Gain [dBi]	Typ 3.77	2.440 [GHz]
3	Total Avg. Gain [dBi]	Typ -1.71	2.440 [GHz]
4	Impedance [Ω]	Nominal 50	

3.2 Mechanical Specification

No	Item	Spec	Remark
1	Dimensions (L x W)	18.5 x 1.2 mm	
2	Operating temperature	- 40 ~ +85 °C	

4. Matching Component

4.1 Ant Circuit.



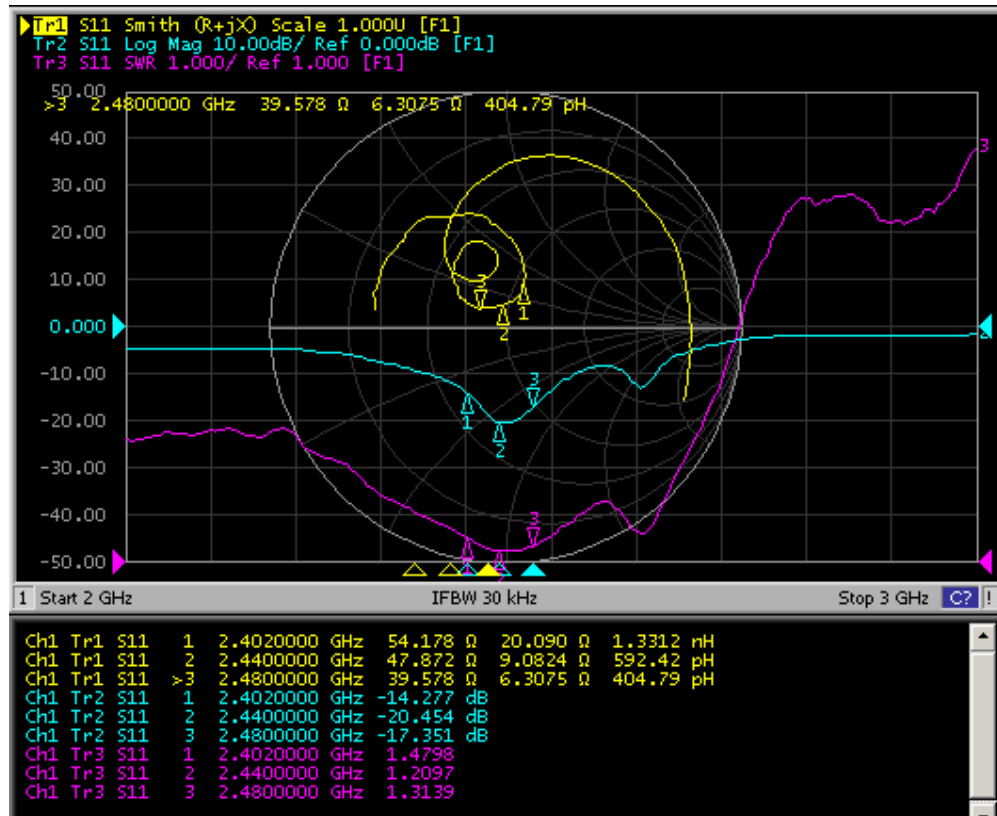
4.2 Matching value

1.OPEN	OPEN
2.Cap (Series)	1pF

5. Measurement Result

5.1 Typical Measurement Result (Smith Chart & Return Loss)

- Smith Chart : Yellow line, Return Loss : Blue line

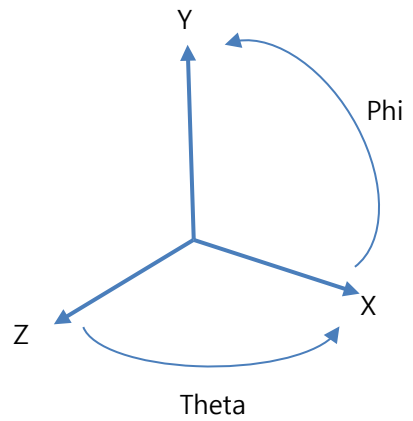
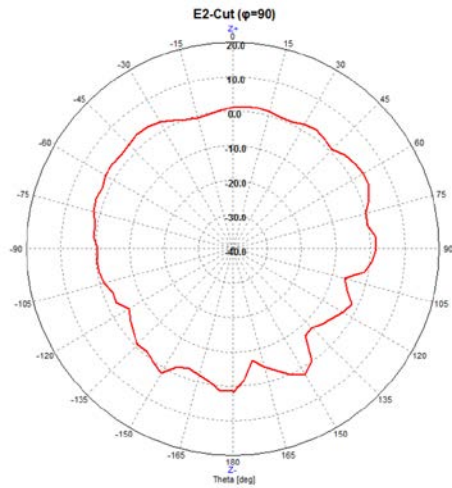
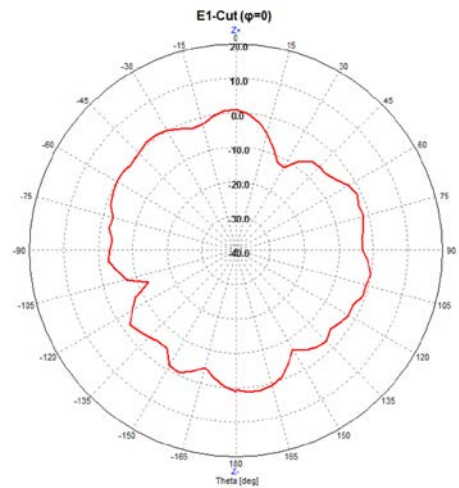
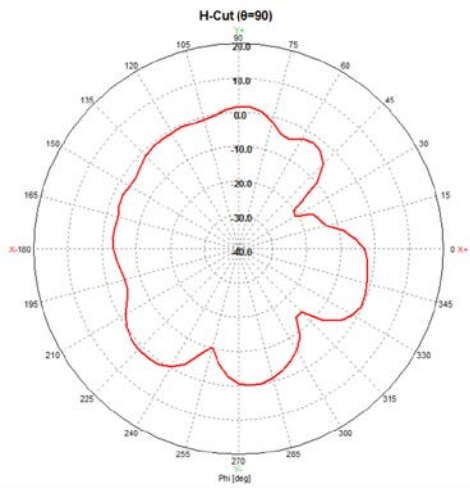


5.2 Typical Measurement Result (Gain)

Frequency [GHz]	Avg.[dBi]	Peak[dBi]
2.400	-1.53	3.91
2.440	-1.71	3.77
2.480	-2.13	3.19

5.3 Typical Measurement Result (Radiation pattern, 2.44GHz)

	Peak Gain [dBi]	Avg. Gain [dBi]	Total Avg. Gain [dBi]
Phi	1.67	-2.33	-1.71
Theta 1	1.30	-2.09	
Theta 2	3.77	0.44	



6 Revision History

Revision No	Date	Change	page
1	14.10.07	Initial revision	