



Document	Datasheet
Type	Pattern Antenna
Application	2.4GHz
Model	OPEL junior

# DATASHEET

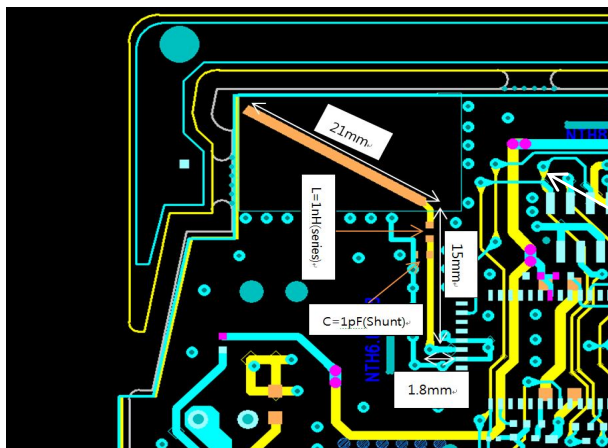
## Appication

WLAN

ISM 2.4GHz Wireless Devices

## Features

Size : Pattern Ant : 21mm/ Module -> Pattern Ant : 16.8mm



## Table of Content

1. Specifications	
1.1 Electrical Specifications	3
1.2 Mechanical Specifications	3
2. Measurement Result	4
2.1 Typical Measurement Result (VSWR/RL,Smithchart)	4
2.2 Typical Measurement Result(Gain, Radiation Pattern)	4

## 1. Specifications

### 1.1 Electrical Specifications

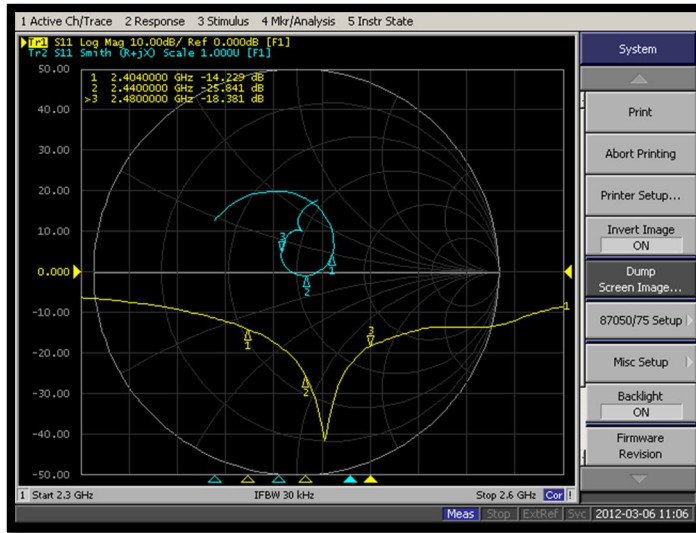
No	Item	Spec	Remark
1	Frequency Range[GHz]	2.4~2.485	
2	Peak Gain [dBi]	0.74	2.44 [GHz]
3	Total Avg. Gain [dBi]	-3.6	2.44 [GHz]
4	Impedance [ $\Omega$ ]	Nominal 50	

### 1.2 Mechanical Specification

No	Item	Spec	Remark
1	Frequency Range[GHz]	2.4~2.485	
2	Operating temperature	-35 ~ +85 °C	

## 2. Measurement Result

### 2.1 Typical Measurement Result (Smithchart)



### 2.2 Typical Measurement Result (Gain, Radiation Pattern)

Avg.[dBi]	Peak[dBi]	$\phi$ [deg]	Null[dBi]	$\phi$ [deg]
-3.55	1.21	33	-13.53	173
-3.6	0.74	27	-13.25	174
-4.41	-0.34	29	-13.43	174

