

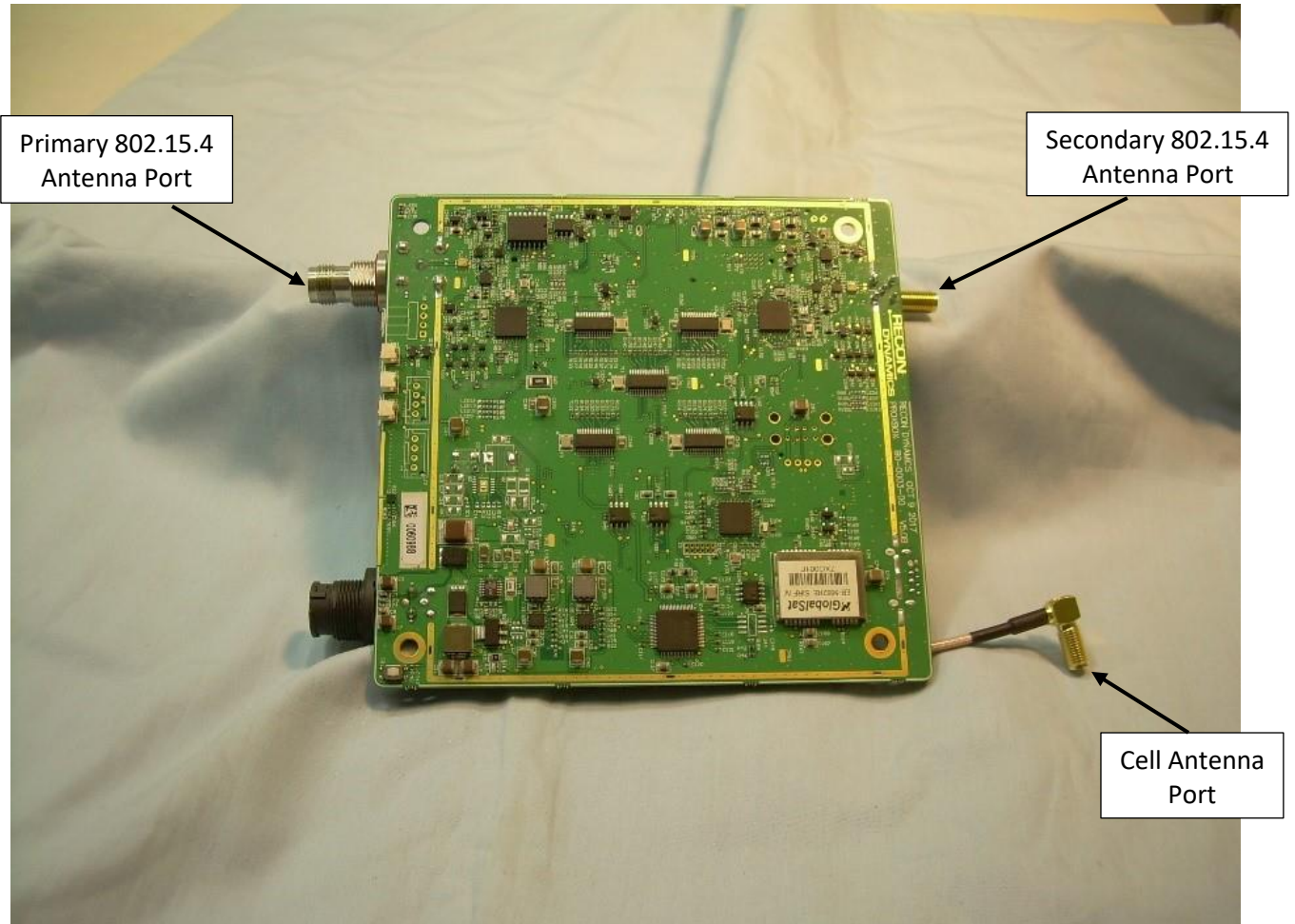
Internal Photographs



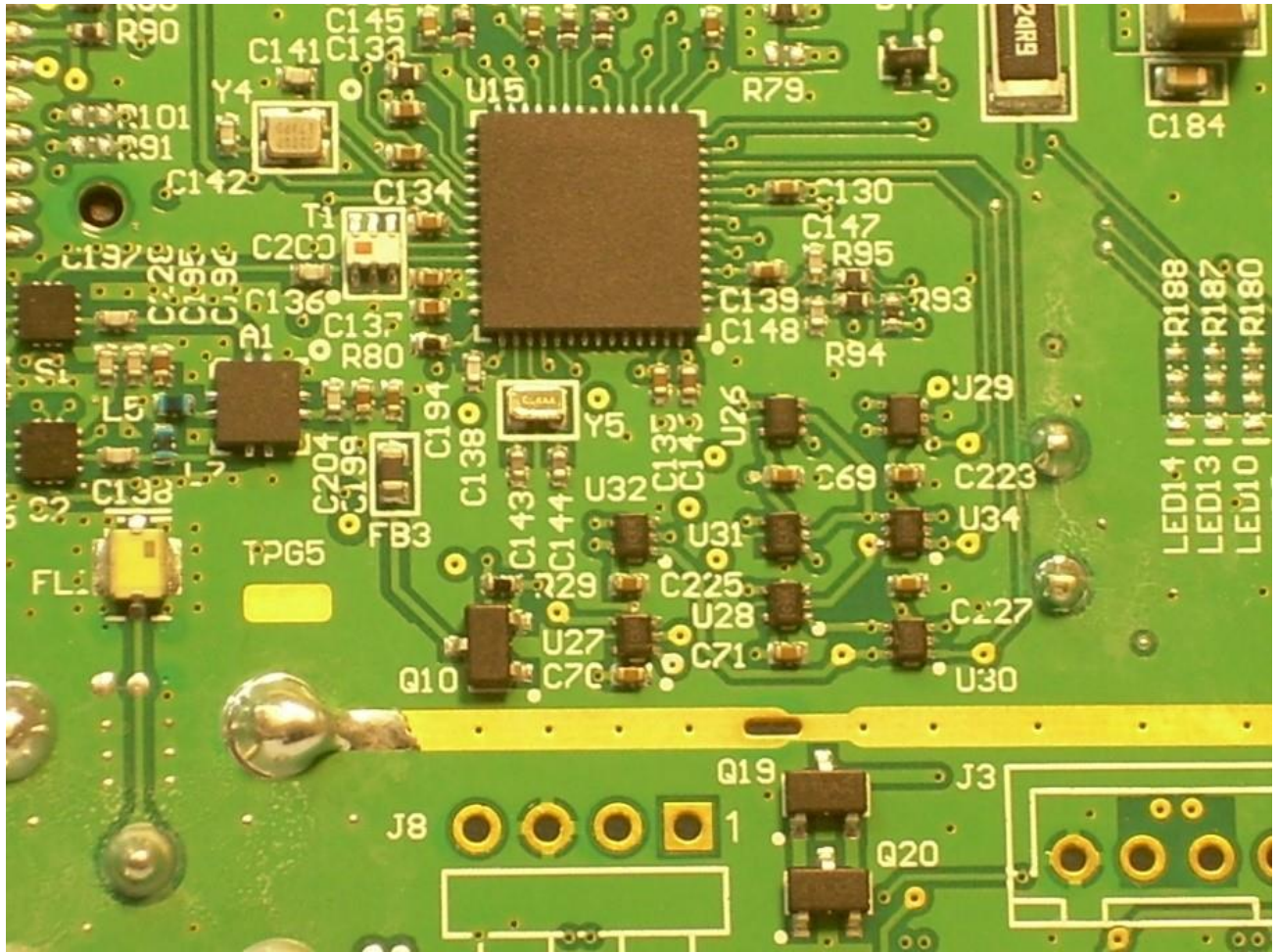
Photograph 1 – Top View of the PCB with Cell Module Installed



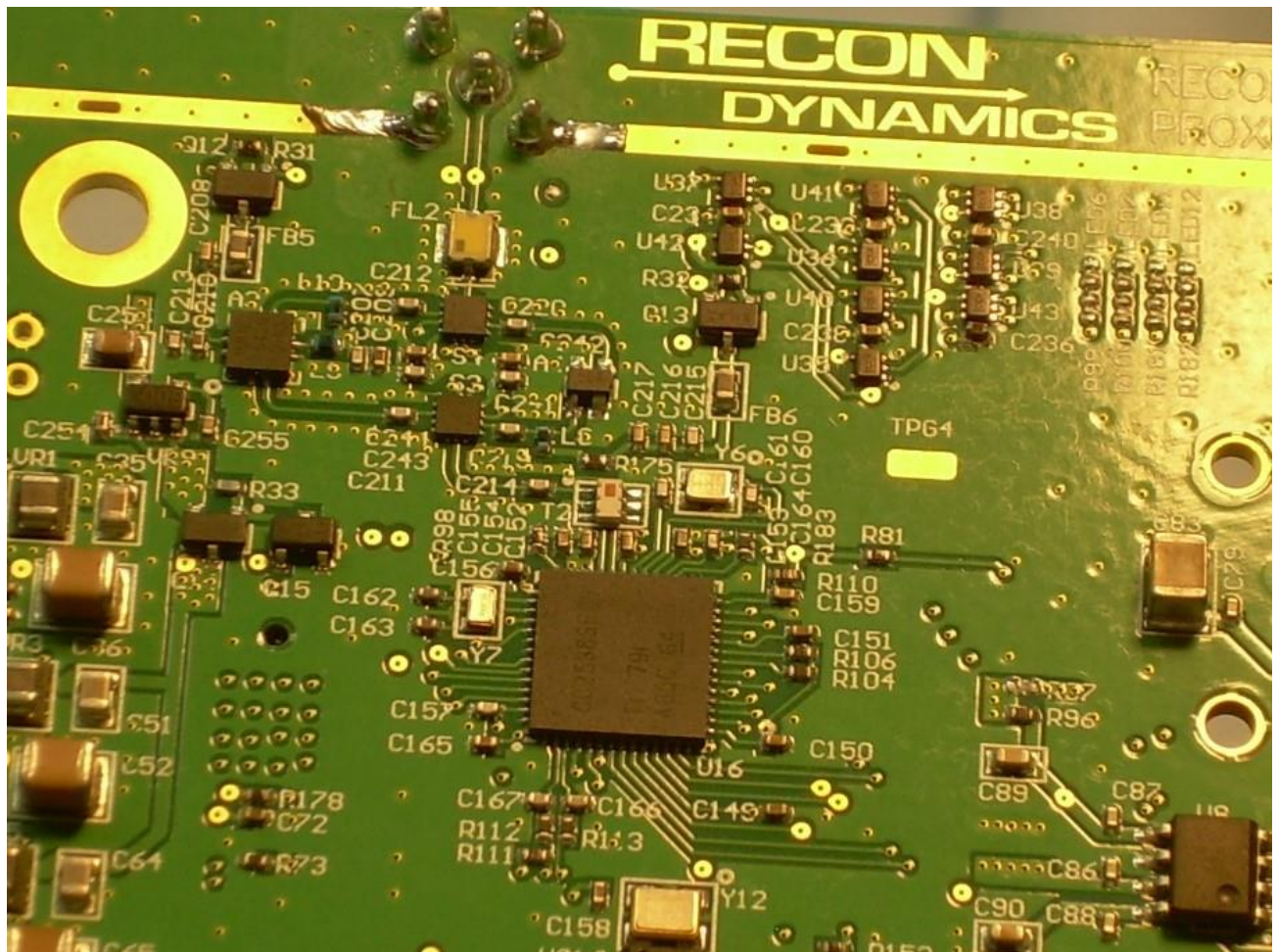
Photograph 2 – View of the PCB with Cell Module Removed



Photograph 3 – View of the Component Side of the PCB



Photograph 4 – View of the Primary Transceiver Circuitry



Photograph 5 – View of the Secondary Transceiver Circuitry