

Infant Monitoring System
User Manual



Video of using



Model: H-550e

CKICOM TECHNOLOGY LIMITED

1. Function

1. Monitor the sleeping posture of an infant and alert when the infant makes sleep on his / her stomach
2. Monitor the wetness condition of the diaper worn by the infant and alert when it is getting wet

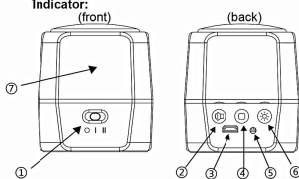
2. Components and Specification

Sensor (model: T-235) x 1
Indicator (model: R-125) x 1
Power supply adaptor: (model: GDP06AV-0500500-3C
Manufacturer: Shenzhen crown Tak Shun Technology Co., Ltd.) x 1

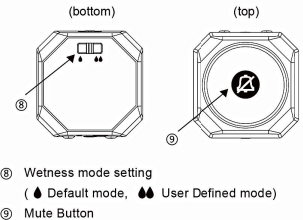
▲ Use only the power supply listed in the user instructions

Sensor Specification :
Battery: CR2032(3V lithium battery) x 1
RF Frequency: 2.4GHz
Standby current: <20μA
Maximum operating current: <15mA
Indicator Specification:
Power input: 5VDC / 500mA
Built-in battery: lithium-polymer rechargeable 3.7V / 1000mAh
RF Frequency: 2.4GHz
Standby current: <20mA
Maximum operating current: <350mA

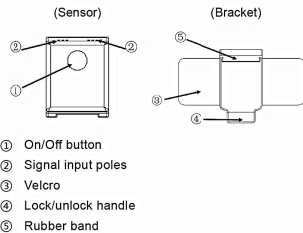
3. Operation interface



- ① Mode switch
○ – Switch off
I – Switch on (operating mode I)
II – Switch on (operating mode II)
- ② Volume button
- ③ Power input (Micro USB port)
- ④ Setting button
- ⑤ Power indicator
- ⑥ Brightness button
- ⑦ Status indicator



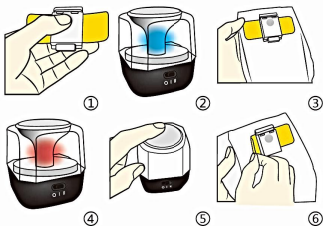
Sensor:



4. Monitor the sleeping posture

(I). When using traditional diaper

- (a) Switch on the indicator and sensor: Switch the operating mode switch of the indicator to I or II, then press the on/off button of the sensor for 2 seconds (as shown in Fig.1), the status indicator turns blue and starts to monitor the sleeping posture (as shown in Fig.2).
- (b) Install the sensor: Put the sensor into the bracket, and then stick the Velcro to the diaper (as shown in Fig.3)
- (c) Sleeping posture monitoring: When the infant sleeps on his/her stomach, the status indicator turns red and the prone sleeping alert sounds (as shown in Fig.4). After correcting the sleeping posture, the status indicator turns back to blue and the alert stops.
- (d) Mute: touch the "Mute Button" to stop the sound of alert (as shown in Fig.5).
- (e) Change the diaper: Take off the bracket and sensor from the wet diaper, and stick it onto the new diaper after changing (as shown in Fig.6).
- (f) Switch off the sensor and indicator: After using, press the on/off button of the sensor for 2 seconds to switch it off and then switch off the indicator.

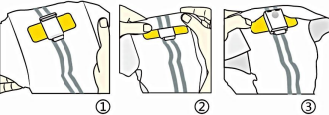


(II). Using the CAREASE diaper

Please refer to "5. Sleeping posture and wetness monitoring"

5. Monitor the sleeping posture and diaper wetness simultaneously (Suitable for using with CAREASE Inductive Diaper)

- (a) Switch on the indicator: Switch the operating mode switch to I(wetness monitoring only) or II (wetness + sleeping posture monitoring) .
- (b) Install the bracket: Stick the bracket to the diaper on the stomach side (as shown in Fig.1)
- (c) Install the sensor: Turn over the edge of the diaper and cover it to the rubber band on the top of bracket (as shown in Fig.2), then lock the sensor to the bracket making the inductive line keeping in touch with the sensor (as shown in Fig.3). Afterwards, the sensor will switch on automatically, and the status indicator will turn green to indicate a successful installation.



(d) Events and status

Event / Status	Status indicator	Alert
Wetness checking in processing	flickering	-
Wetness checking completes	Stop flickering	-
Moist	yellow	-
Wet	red	Diaper wet alert
Prone sleeping	Red light flickers	Prone sleeping alert
Change Diaper/Correct Sleeping posture	Status indicator turns off.	Alert stops
Mute	Light of status indicator keeps unchanging	Alert stops

- (e) Mute: Press the Mute Button to stop the sound of alert. Change the diaper: Press the handle and take out the sensor before changing the diaper (as shown in Fig.5).
- (f) The Sensor will switch off automatically, then remove the bracket from the diaper.
- (g) Switch off the indicator : After using, take out the sensor and the bracket from the diaper (as shown in Fig.6) and turn off the indicator.



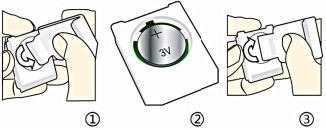
6. Other Instructions

- Wetness Mode
▲ Default mode: This mode comes with a relatively high sensitivity, a small amount of urine will lead to the diaper wet alert
▲ User-defined mode: Users can customize their own wetness settings by the following methods:

Case	Action	Cause results
Although the diaper is wet enough, but the diaper wet alert has not come yet	Press the Setting button for three seconds	Increase the sensitivity and trigger the diaper wet alert
The changing diaper alert comes too early, and the diaper is not wet enough yet	Press the Setting button for three seconds.	Decrease the sensitivity and stop the diaper wet alert.

Note: The Setting button is valid only on the condition that the wetness checking completes (No light flickering)

- Brightness Adjustment
Press the Brightness button to change the brightness level
- Volume Adjustment
Press Volume Button to change the volume level
- Sensor Pairing
Keep pressing the setting button and switch on the indicator to force the system to enter the pairing mode. In the pairing mode, press the sensor on/off button for 2 seconds to match the sensor to the indicator. The pairing mode will quit automatically if there is not any operation for 10 seconds.
- Offline Alert
The indicator should be placed in the same room with the sensor to keep the communication reliable. If the indicator can't receive the signal from the sensor, it will come into a so-called offline status and make the offline alert. Battery low is another reason for offline, if this is the case, then the battery should be changed.
- Sensor Battery Low
When locking the sensor, the indicator turns green first and then turns off immediately, this means the battery of the sensor is low and should be changed, the battery changing procedure is as follows-
 1. Use the sensor bracket to turn the battery cover counter clockwise to open (as shown in Fig 1).
 2. Replace the battery for a new one and the direction of battery is positive upward(as shown in Fig 2).
 3. Rotate the battery cover clockwise to lock it back(as shown in Fig 3).



● Battery charging

When the indicator's rechargeable battery is low, a low-battery alert will be given. We can charge the battery through the micro USB port. After fully charged, the power indicator next to the USB port will change from red to green.

CAUTION
RISK OF EXPLOSION IF BATTERY IS REPLACED BY AN INCORRECT TYPE.
DISPOSE OF USED BATTERIES ACCORDING TO THE INSTRUCTIONS

All electrical and electronic products including batteries should be disposed of separately from the municipal waste stream via designated collection facilities appointed by the government or the local authorities.



This device complies with part 15 of the FCC Rules. Operation is subject to the following two conditions: (1) This device may not cause harmful interference, and (2) this device must accept any interference received, including interference that may cause undesired operation.

Changes or modifications not expressly approved by the party responsible for compliance could void the user's authority to operate the equipment.

NOTE: This equipment has been tested and found to comply with the limits for a Class B digital device, pursuant to part 15 of the FCC Rules. These limits are designed to provide reasonable protection against harmful interference in a residential installation. This equipment generates, uses and can radiate radio frequency energy and, if not installed and used in accordance with the instructions, may cause harmful interference to radio communications. However, there is no guarantee that interference will not occur in a particular installation. If this equipment does cause harmful interference to radio or television reception, which can be determined by turning the equipment off and on, the user is encouraged to try to correct the interference by one or more of the following measures:

- Reorient or relocate the receiving antenna.
- Increase the separation between the equipment and receiver.
- Connect the equipment into an outlet on a circuit different from that to which the receiver is connected.
- Consult the dealer or an experienced radio/TV technician for help.