



深圳市拓频物联技术有限公司

SHENZHEN FREQUENCY EXTENSION IOT TECHNOLOGY CO.,LTD.

WIFI dual-band antenna (300-010-0K-A-03) specification sheet

model name: 300-010-0K-A-03

manufacturer: Shenzhen Frequency extension IoT Technology Co., Ltd.



一, Finished antenna pictures



Finished antenna pictures



Whole machine diagram



二, Antenna passive parameters

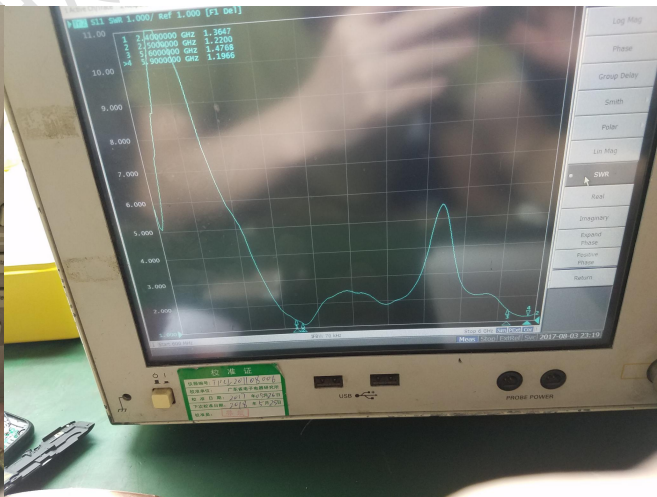
1, WIFI standing wave ratio and return loss table:

频率点 (MHZ)	2400	2500	5600	5900
return loss	-16.55	-20.38	-14.70	-20.41
standing wave ratio	1.36	1.22	1.47	1.19

2. Standing wave ratio and return loss diagram



VSWR



Returnloss



2.1 Antenna efficiency/gain

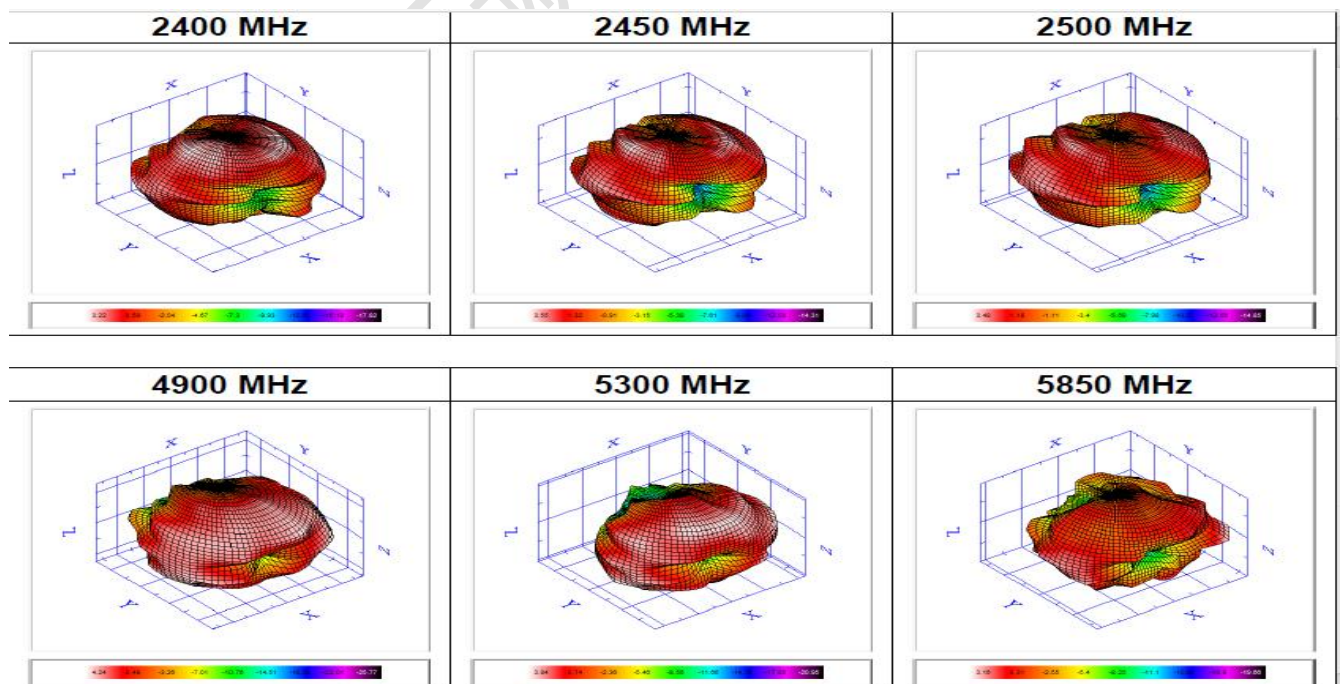
Frequency	Efficiency	Gain . dBi
2400MHz	51%	1.88
2405MHz	50%	1.80
2410MHz	50%	1.82
2415MHz	50%	1.72
2420MHz	51%	1.88
2425MHz	51%	1.73
2430MHz	51%	1.79
2435MHz	50%	1.68
2440MHz	50%	1.63
2445MHz	49%	1.54
2450MHz	51%	1.72
2455MHz	50%	1.55
2460MHz	52%	1.84
2465MHz	51%	1.71
2470MHz	50%	1.66
2475MHz	51%	1.76
2480MHz	51%	1.67
2485MHz	54%	2.01
2490MHz	54%	1.96
2495MHz	54%	1.93
2500MHz	53%	1.89
Frequency	Efficiency	Gain . dBi
5200MHz	36%	-0.23
5260MHz	33%	-0.52
5320MHz	32%	-0.49
5380MHz	32%	-0.92
5440MHz	36%	0.87
5500MHz	33%	-0.61
5560MHz	41%	1.58
5620MHz	38%	0.31
5680MHz	45%	1.35
5740MHz	44%	0.67
5780MHz	46%	0.83
5800MHz	47%	1.08



3. WIFI test data

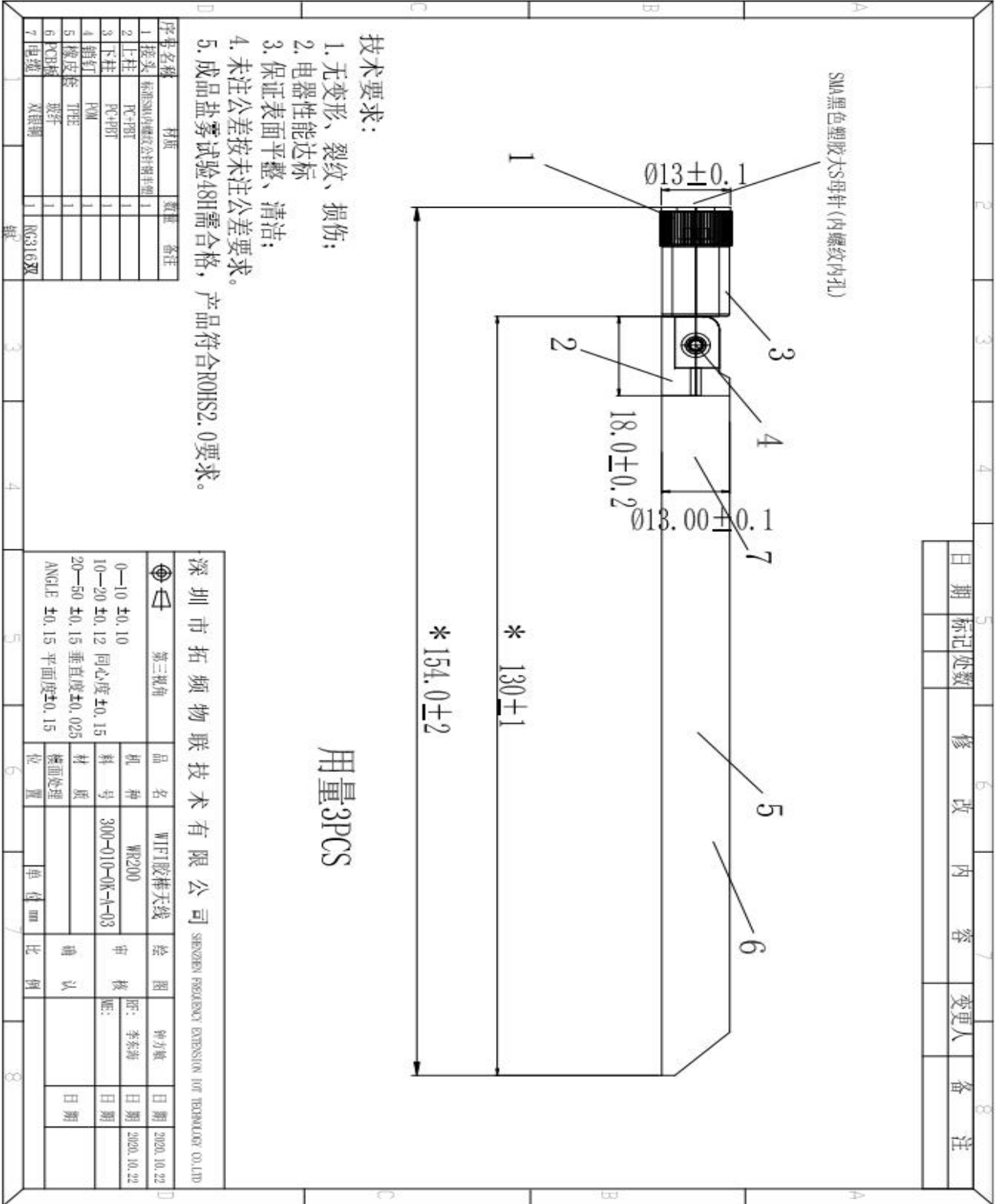
Antenna Performance Table						
		Channel No.	TRP (dBm)	Whole Band TRP (dBm)	TIS (dBm)	Whole Band TIS (dBm)
2.4G	b模式 (11MHz)	1	15.61		-85.3	
		6	17.46		-84.8	
		11	16.94		-84.2	
	g模式 (54MHz)	1	19.34		-76.19	
		6	19.36		-71.84	
		11	19.66		-73.02	
	n模式 (MCS7)	1	19.12		-70.21	
		6	19.64		-66.69	
		11	19.83		-71.95	
5G	a模式 (54MHz)	36	14.33		-63.77	
		64	14.71		-62.59	
		149	9.48		-61.38	
		165	10.74		-61.27	

4. Antenna Pattern






三、Antenna structure drawings





四, Packing

包装式样书			
产品名称	产品型号	产品料号	文件编号
图示区:			
			
			
<p>A: 单品需使用PET袋包装，每PCS需贴上ROHS标贴。</p> <p>B: 箱体需放置隔板。</p> <p>C: 每箱限定放置数量，上层放置隔板。</p> <p>D: 现品票格式需严格依据我司样品打印，不接受破损，断裂，字体模糊，整箱重量需注现品贴符在包装箱左上角，每箱需贴ROHS标贴。</p> <p>E: 产品堆放限定高度170MM</p> <p>注：重量管控：单PCS重量 $g \pm 8g$</p> <p>纸箱限定使用材质k=K，纸箱限定规格330*240*170</p>			