



# Appendix B

## Detailed Test Results

GSM850 for Body
GSM1900 for Body

Test Laboratory: SGS-SAR Lab

**GL300 GSM850 GPRS 3TS 190CH Back side 0mm**

**DUT: GL300; Type: GSM850; Serial: NA**

Communication System: GSM850-GPRS Mode(3up); Frequency: 836.6 MHz;Duty Cycle: 1:2.77

Medium: MSL835 Medium parameters used:  $f = 837$  MHz;  $\sigma = 0.991$  mho/m;  $\epsilon_r = 55.4$ ;  $\rho = 1000$  kg/m<sup>3</sup>

Phantom section: Flat Section

DASY4 Configuration:

- Probe: ES3DV3 - SN3088; ConvF(6.02, 6.02, 6.02); Calibrated: 2012-11-26
- Sensor-Surface: 4mm (Mechanical Surface Detection)
- Electronics: DAE3 Sn569; Calibrated: 2012-11-27
- Phantom: SAM 1; Type: SAM V4.0; Serial: TP-1283
- Measurement SW: DASY4, V4.7 Build 80; Postprocessing SW: SEMCAD, V1.8 Build 186

**Body/Area Scan (7x9x1):** Measurement grid: dx=15mm, dy=15mm

Maximum value of SAR (measured) = 0.308 mW/g

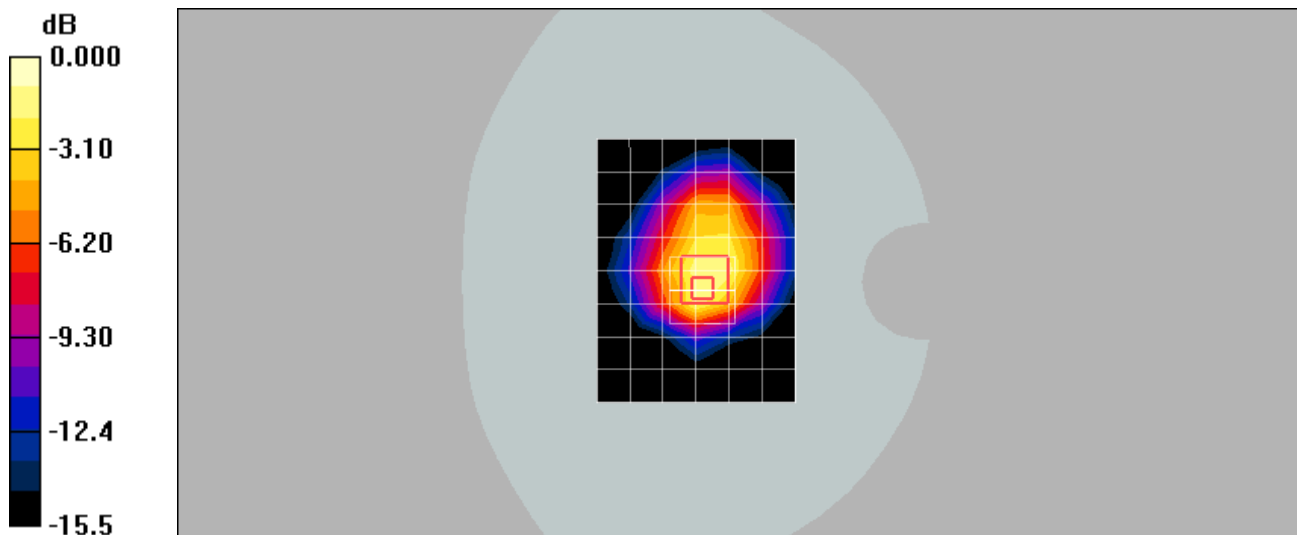
**Body/Zoom Scan (7x7x7)/Cube 0:** Measurement grid: dx=5mm, dy=5mm, dz=5mm

Reference Value = 19.7 V/m; Power Drift = -0.022 dB

Peak SAR (extrapolated) = 0.754 W/kg

**SAR(1 g) = 0.357 mW/g; SAR(10 g) = 0.204 mW/g**

Maximum value of SAR (measured) = 0.415 mW/g



0 dB = 0.415mW/g

Test Laboratory: SGS-SAR Lab

### GL300 GSM850 GPRS 3TS 190CH Front side 0mm

**DUT: GL300; Type: GSM850; Serial: NA**

Communication System: GSM850-GPRS Mode(3up); Frequency: 836.6 MHz; Duty Cycle: 1:2.77

Medium: MSL835 Medium parameters used:  $f = 837$  MHz;  $\sigma = 0.991$  mho/m;  $\epsilon_r = 55.4$ ;  $\rho = 1000$  kg/m<sup>3</sup>

Phantom section: Flat Section

DASY4 Configuration:

- Probe: ES3DV3 - SN3088; ConvF(6.02, 6.02, 6.02); Calibrated: 2012-11-26
- Sensor-Surface: 4mm (Mechanical Surface Detection)
- Electronics: DAE3 Sn569; Calibrated: 2012-11-27
- Phantom: SAM 1; Type: SAM V4.0; Serial: TP-1283
- Measurement SW: DASY4, V4.7 Build 80; Postprocessing SW: SEMCAD, V1.8 Build 186

**Body/Area Scan (7x9x1):** Measurement grid: dx=15mm, dy=15mm

Maximum value of SAR (measured) = 0.625 mW/g

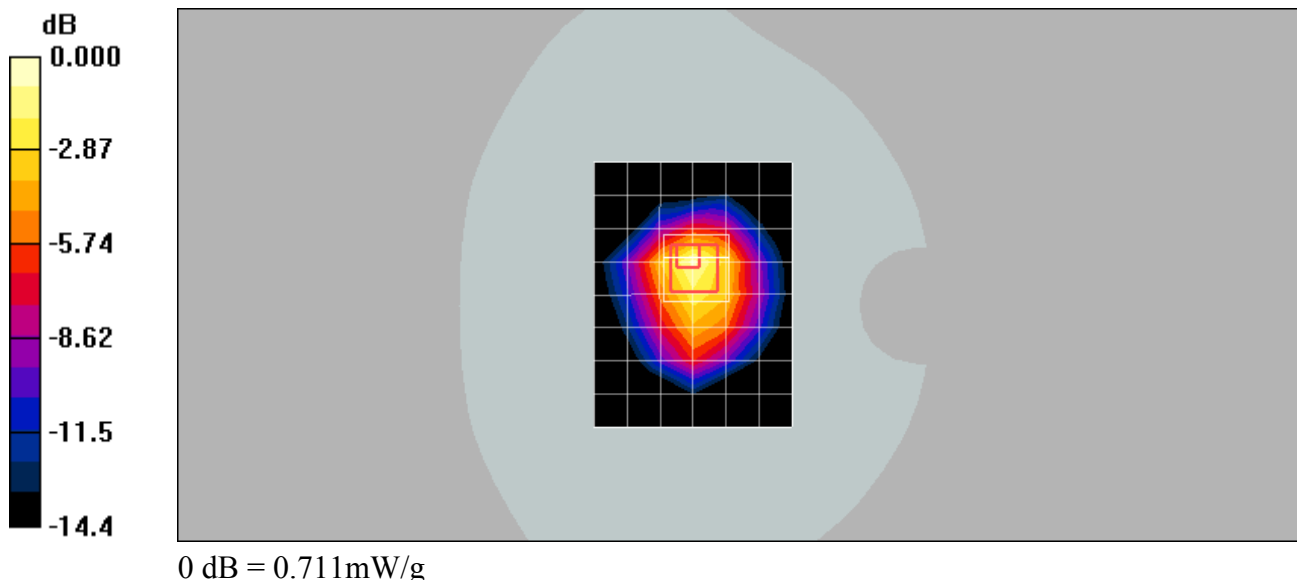
**Body/Zoom Scan (7x7x7)/Cube 0:** Measurement grid: dx=5mm, dy=5mm, dz=5mm

Reference Value = 19.5 V/m; Power Drift = -0.180 dB

Peak SAR (extrapolated) = 1.45 W/kg

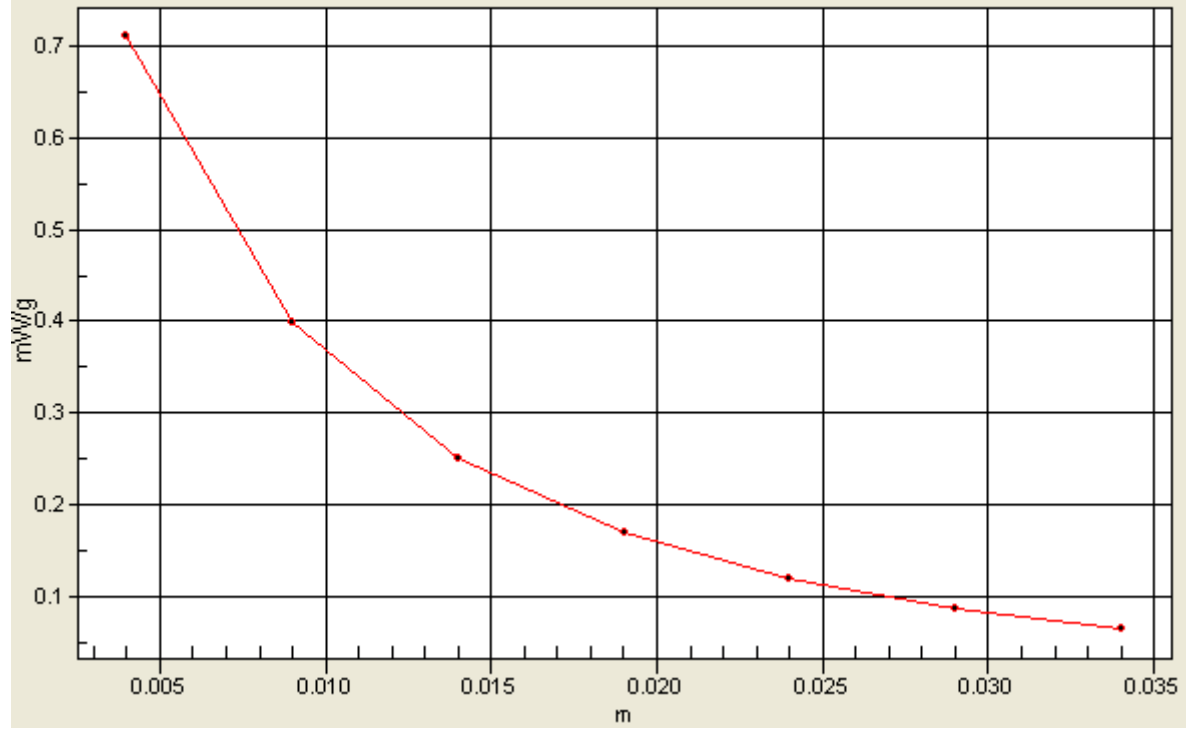
**SAR(1 g) = 0.631 mW/g; SAR(10 g) = 0.338 mW/g**

Maximum value of SAR (measured) = 0.711 mW/g



# 1g/10g Averaged SAR

SAR; Zoom Scan: Value Along Z, X=4, Y=4



Test Laboratory: SGS-SAR Lab

### GL300 GSM850 GPRS 3TS 190CH Top side 0mm

**DUT: GL300; Type: GSM850; Serial: NA**

Communication System: GSM850-GPRS Mode(3up); Frequency: 836.6 MHz; Duty Cycle: 1:2.77

Medium: MSL835 Medium parameters used:  $f = 837$  MHz;  $\sigma = 0.991$  mho/m;  $\epsilon_r = 55.4$ ;  $\rho = 1000$  kg/m<sup>3</sup>

Phantom section: Flat Section

DASY4 Configuration:

- Probe: ES3DV3 - SN3088; ConvF(6.02, 6.02, 6.02); Calibrated: 2012-11-26
- Sensor-Surface: 4mm (Mechanical Surface Detection)
- Electronics: DAE3 Sn569; Calibrated: 2012-11-27
- Phantom: SAM 1; Type: SAM V4.0; Serial: TP-1283
- Measurement SW: DASY4, V4.7 Build 80; Postprocessing SW: SEMCAD, V1.8 Build 186

**Body/Area Scan (7x9x1):** Measurement grid: dx=15mm, dy=15mm

Maximum value of SAR (measured) = 0.516 mW/g

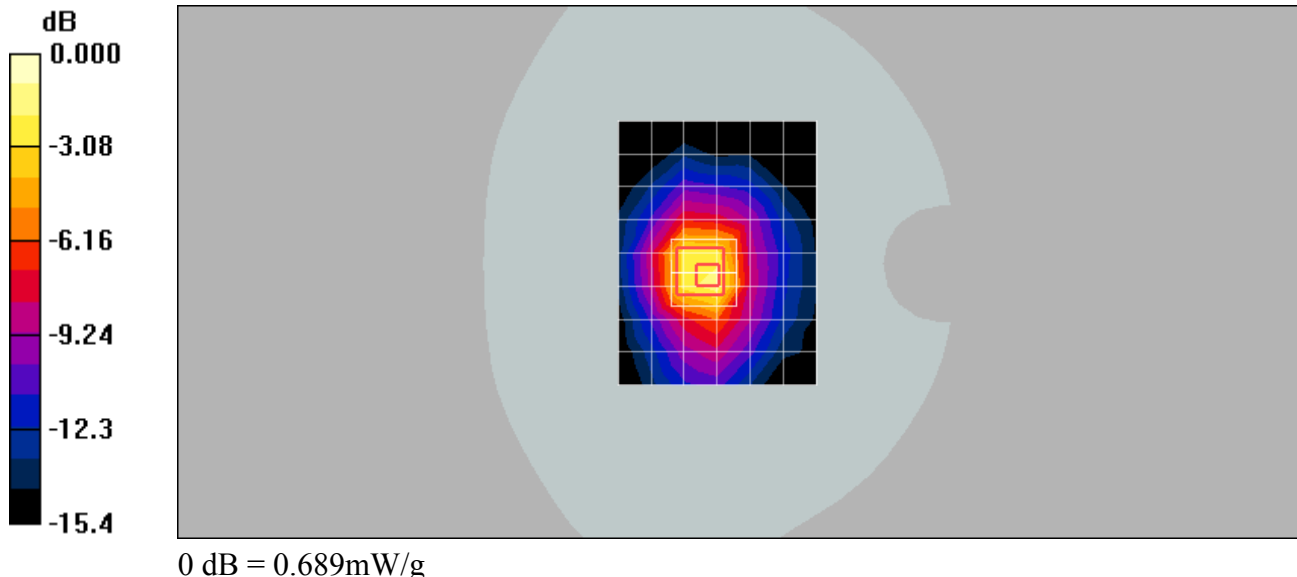
**Body/Zoom Scan (7x7x7)/Cube 0:** Measurement grid: dx=5mm, dy=5mm, dz=5mm

Reference Value = 24.3 V/m; Power Drift = -0.180 dB

Peak SAR (extrapolated) = 1.64 W/kg

**SAR(1 g) = 0.609 mW/g; SAR(10 g) = 0.279 mW/g**

Maximum value of SAR (measured) = 0.689 mW/g



Test Laboratory: SGS-SAR Lab

### GL300 GSM850 GPRS 3TS 190CH Bottom side 0mm

**DUT: GL300; Type: GSM850; Serial: NA**

Communication System: GSM850-GPRS Mode(3up); Frequency: 836.6 MHz; Duty Cycle: 1:2.77

Medium: MSL835 Medium parameters used:  $f = 837$  MHz;  $\sigma = 0.991$  mho/m;  $\epsilon_r = 55.4$ ;  $\rho = 1000$  kg/m<sup>3</sup>

Phantom section: Flat Section

DASY4 Configuration:

- Probe: ES3DV3 - SN3088; ConvF(6.02, 6.02, 6.02); Calibrated: 2012-11-26
- Sensor-Surface: 4mm (Mechanical Surface Detection)
- Electronics: DAE3 Sn569; Calibrated: 2012-11-27
- Phantom: SAM 1; Type: SAM V4.0; Serial: TP-1283
- Measurement SW: DASY4, V4.7 Build 80; Postprocessing SW: SEMCAD, V1.8 Build 186

**Body/Area Scan (7x9x1):** Measurement grid: dx=15mm, dy=15mm

Maximum value of SAR (measured) = 0.022 mW/g

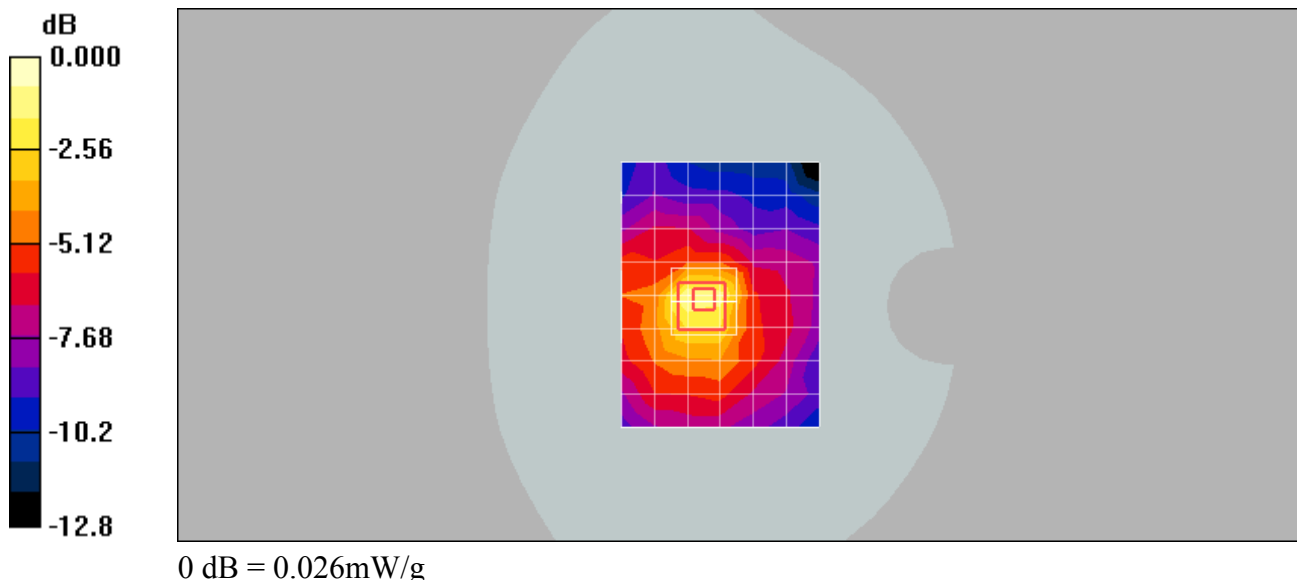
**Body/Zoom Scan (7x7x7)/Cube 0:** Measurement grid: dx=5mm, dy=5mm, dz=5mm

Reference Value = 4.38 V/m; Power Drift = -0.121 dB

Peak SAR (extrapolated) = 0.045 W/kg

**SAR(1 g) = 0.023 mW/g; SAR(10 g) = 0.012 mW/g**

Maximum value of SAR (measured) = 0.026 mW/g



Test Laboratory: SGS-SAR Lab

### GL300 GSM850 GPRS 3TS 190CH Left side 0mm

**DUT: GL300; Type: GSM850; Serial: NA**

Communication System: GSM850-GPRS Mode(3up); Frequency: 836.6 MHz; Duty Cycle: 1:2.77

Medium: MSL835 Medium parameters used:  $f = 837$  MHz;  $\sigma = 0.991$  mho/m;  $\epsilon_r = 55.4$ ;  $\rho = 1000$  kg/m<sup>3</sup>

Phantom section: Flat Section

DASY4 Configuration:

- Probe: ES3DV3 - SN3088; ConvF(6.02, 6.02, 6.02); Calibrated: 2012-11-26
- Sensor-Surface: 4mm (Mechanical Surface Detection)
- Electronics: DAE3 Sn569; Calibrated: 2012-11-27
- Phantom: SAM 1; Type: SAM V4.0; Serial: TP-1283
- Measurement SW: DASY4, V4.7 Build 80; Postprocessing SW: SEMCAD, V1.8 Build 186

**Body/Area Scan (7x9x1):** Measurement grid: dx=15mm, dy=15mm

Maximum value of SAR (measured) = 0.217 mW/g

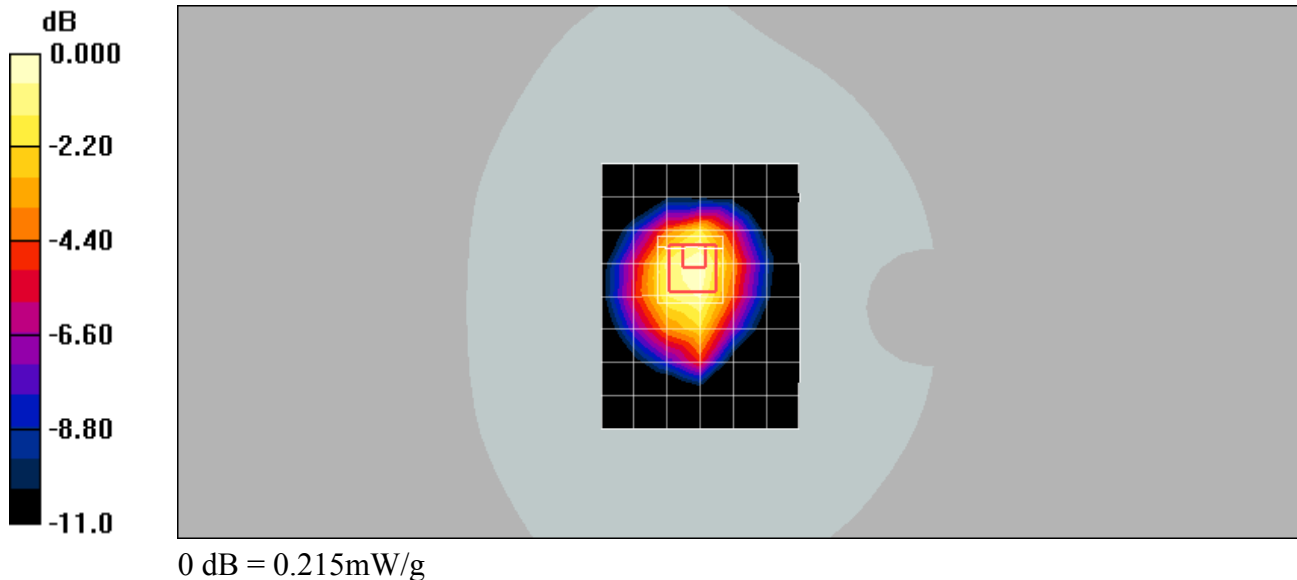
**Body/Zoom Scan (7x7x7)/Cube 0:** Measurement grid: dx=5mm, dy=5mm, dz=5mm

Reference Value = 13.3 V/m; Power Drift = -0.180 dB

Peak SAR (extrapolated) = 0.318 W/kg

**SAR(1 g) = 0.199 mW/g; SAR(10 g) = 0.131 mW/g**

Maximum value of SAR (measured) = 0.215 mW/g



Test Laboratory: SGS-SAR Lab

### GL300 GSM850 GPRS 3TS 190CH Right side 0mm

**DUT: GL300; Type: GSM850; Serial: NA**

Communication System: GSM850-GPRS Mode(3up); Frequency: 836.6 MHz; Duty Cycle: 1:2.77

Medium: MSL835 Medium parameters used:  $f = 837$  MHz;  $\sigma = 0.991$  mho/m;  $\epsilon_r = 55.4$ ;  $\rho = 1000$  kg/m<sup>3</sup>

Phantom section: Flat Section

DASY4 Configuration:

- Probe: ES3DV3 - SN3088; ConvF(6.02, 6.02, 6.02); Calibrated: 2012-11-26
- Sensor-Surface: 4mm (Mechanical Surface Detection)
- Electronics: DAE3 Sn569; Calibrated: 2012-11-27
- Phantom: SAM 1; Type: SAM V4.0; Serial: TP-1283
- Measurement SW: DASY4, V4.7 Build 80; Postprocessing SW: SEMCAD, V1.8 Build 186

**Body/Area Scan (7x9x1):** Measurement grid: dx=15mm, dy=15mm

Maximum value of SAR (measured) = 0.211 mW/g

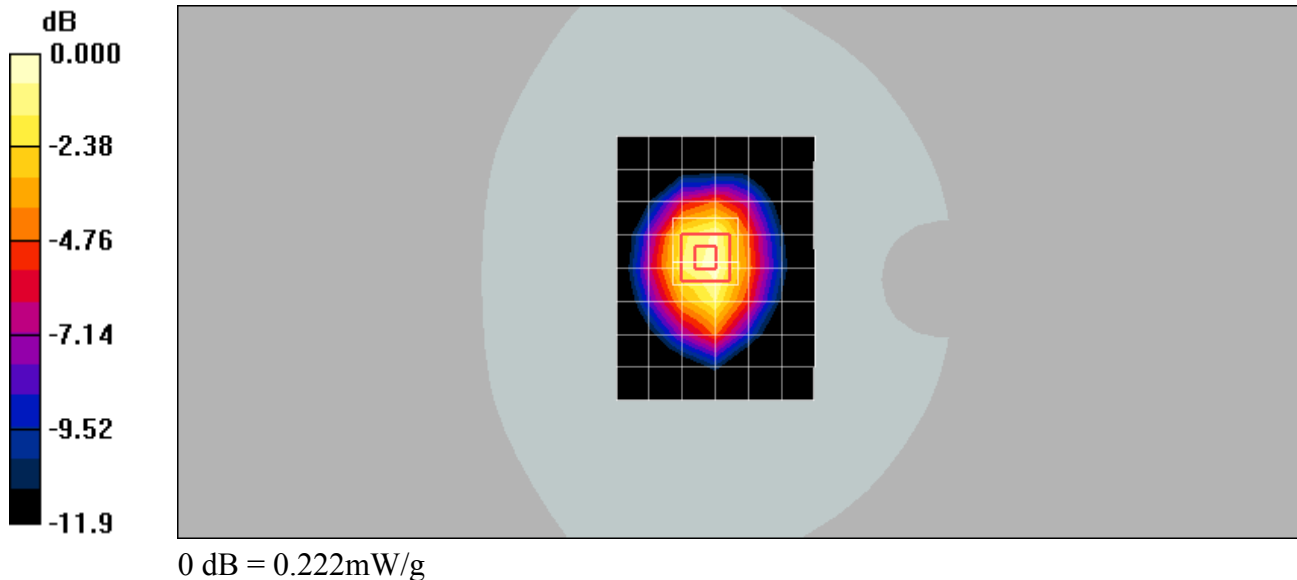
**Body/Zoom Scan (7x7x7)/Cube 0:** Measurement grid: dx=5mm, dy=5mm, dz=5mm

Reference Value = 14.3 V/m; Power Drift = -0.099 dB

Peak SAR (extrapolated) = 0.304 W/kg

**SAR(1 g) = 0.204 mW/g; SAR(10 g) = 0.130 mW/g**

Maximum value of SAR (measured) = 0.222 mW/g





Test Laboratory: SGS-SAR Lab

### GL300 GSM1900 GPRS 3TS 661CH Back side 0mm

**DUT: GL300; Type: GSM1900; Serial: NA**

Communication System: PCS1900-GPRS Mode; Frequency: 1880 MHz; Duty Cycle: 1:2.77

Medium: MSL1900 Medium parameters used:  $f = 1880$  MHz;  $\sigma = 1.53$  mho/m;  $\epsilon_r = 52.1$ ;  $\rho = 1000$  kg/m<sup>3</sup>

Phantom section: Flat Section

DASY4 Configuration:

- Probe: ES3DV3 - SN3088; ConvF(4.91, 4.91, 4.91); Calibrated: 2012-11-26
- Sensor-Surface: 4mm (Mechanical Surface Detection)
- Electronics: DAE3 Sn569; Calibrated: 2012-11-27
- Phantom: SAM 1; Type: SAM V4.0; Serial: TP-1283
- Measurement SW: DASY4, V4.7 Build 80; Postprocessing SW: SEMCAD, V1.8 Build 186

**Body/Area Scan (7x9x1):** Measurement grid: dx=15mm, dy=15mm

Maximum value of SAR (measured) = 1.34 mW/g

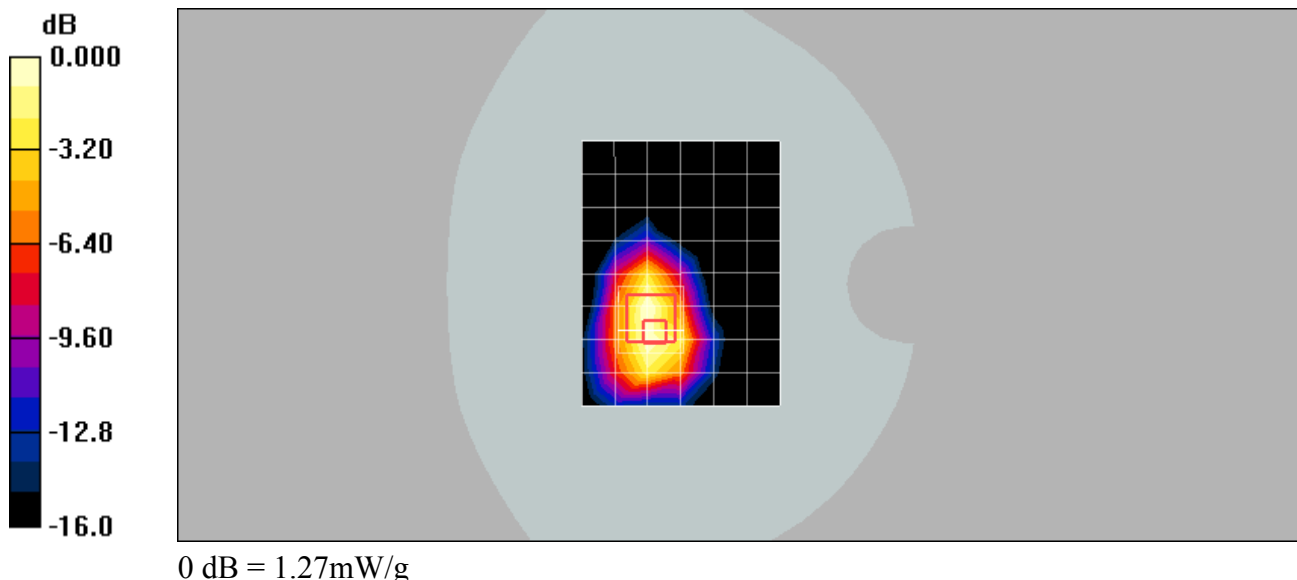
**Body/Zoom Scan (7x7x7)/Cube 0:** Measurement grid: dx=5mm, dy=5mm, dz=5mm

Reference Value = 12.2 V/m; Power Drift = -0.021 dB

Peak SAR (extrapolated) = 1.85 W/kg

**SAR(1 g) = 1.18 mW/g; SAR(10 g) = 0.733 mW/g**

Maximum value of SAR (measured) = 1.27 mW/g



Test Laboratory: SGS-SAR Lab

### GL300 GSM1900 GPRS 3TS 512CH Back side 0mm

**DUT: GL300; Type: GSM1900; Serial: NA**

Communication System: PCS1900-GPRS Mode; Frequency: 1850.2 MHz; Duty Cycle: 1:2.77  
Medium: MSL1900 Medium parameters used (interpolated):  $f = 1850.2$  MHz;  $\sigma = 1.51$  mho/m;  $\epsilon_r = 52.2$ ;  
 $\rho = 1000$  kg/m<sup>3</sup>  
Phantom section: Flat Section

DASY4 Configuration:

- Probe: ES3DV3 - SN3088; ConvF(4.91, 4.91, 4.91); Calibrated: 2012-11-26
- Sensor-Surface: 4mm (Mechanical Surface Detection)
- Electronics: DAE3 Sn569; Calibrated: 2012-11-27
- Phantom: SAM 1; Type: SAM V4.0; Serial: TP-1283
- Measurement SW: DASY4, V4.7 Build 80; Postprocessing SW: SEMCAD, V1.8 Build 186

**Body/Area Scan (7x9x1):** Measurement grid: dx=15mm, dy=15mm

[Info: Interpolated medium parameters used for SAR evaluation.](#)

Maximum value of SAR (measured) = 1.14 mW/g

**Body/Zoom Scan (7x7x7)/Cube 0:** Measurement grid: dx=5mm, dy=5mm, dz=5mm

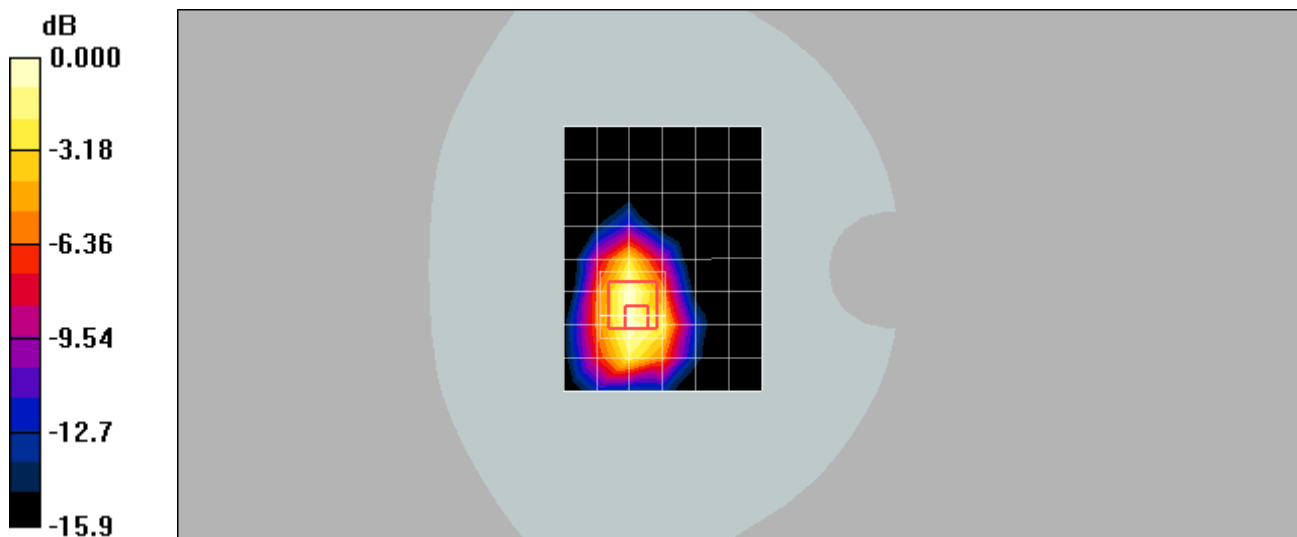
Reference Value = 12.0 V/m; Power Drift = -0.098 dB

Peak SAR (extrapolated) = 1.61 W/kg

**SAR(1 g) = 1.04 mW/g; SAR(10 g) = 0.641 mW/g**

[Info: Interpolated medium parameters used for SAR evaluation.](#)

Maximum value of SAR (measured) = 1.12 mW/g



0 dB = 1.12mW/g

Test Laboratory: SGS-SAR Lab

**GL300 GSM1900 GPRS 3TS 810CH Back side 0mm**

**DUT: GL300; Type: GSM1900; Serial: NA**

Communication System: PCS1900-GPRS Mode; Frequency: 1909.8 MHz; Duty Cycle: 1:2.77

Medium: MSL1900 Medium parameters used:  $f = 1910$  MHz;  $\sigma = 1.57$  mho/m;  $\epsilon_r = 52.1$ ;  $\rho = 1000$  kg/m<sup>3</sup>

Phantom section: Flat Section

DASY4 Configuration:

- Probe: ES3DV3 - SN3088; ConvF(4.91, 4.91, 4.91); Calibrated: 2012-11-26
- Sensor-Surface: 4mm (Mechanical Surface Detection)
- Electronics: DAE3 Sn569; Calibrated: 2012-11-27
- Phantom: SAM 1; Type: SAM V4.0; Serial: TP-1283
- Measurement SW: DASY4, V4.7 Build 80; Postprocessing SW: SEMCAD, V1.8 Build 186

**Body/Area Scan (7x9x1):** Measurement grid: dx=15mm, dy=15mm

Maximum value of SAR (measured) = 1.54 mW/g

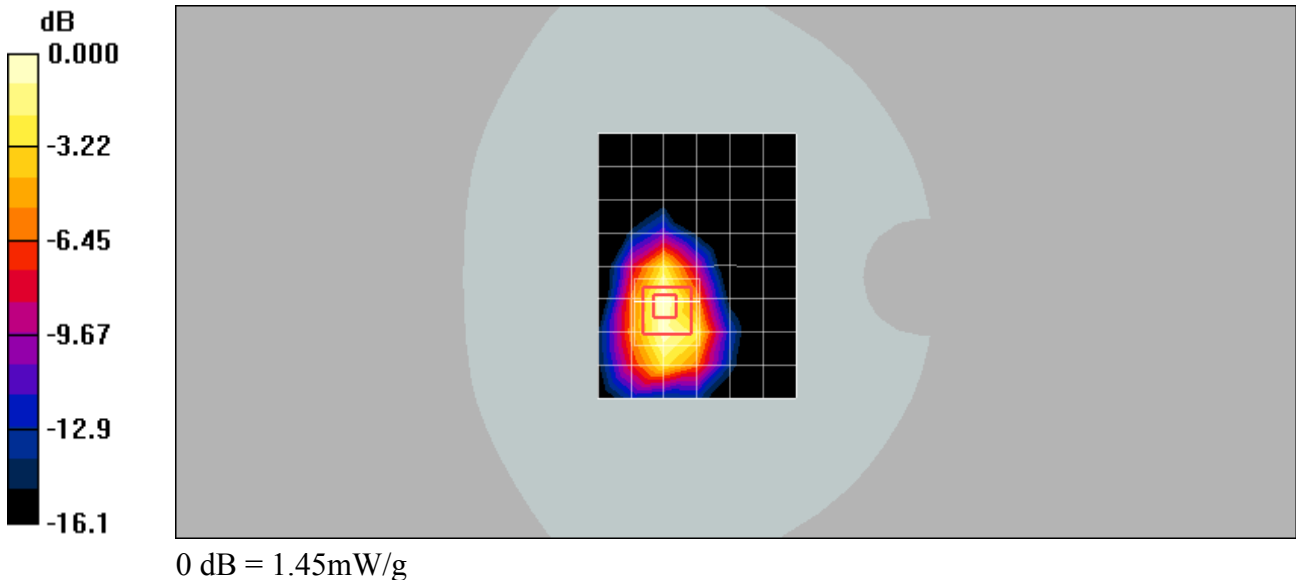
**Body/Zoom Scan (7x7x7)/Cube 0:** Measurement grid: dx=5mm, dy=5mm, dz=5mm

Reference Value = 13.0 V/m; Power Drift = -0.098 dB

Peak SAR (extrapolated) = 2.08 W/kg

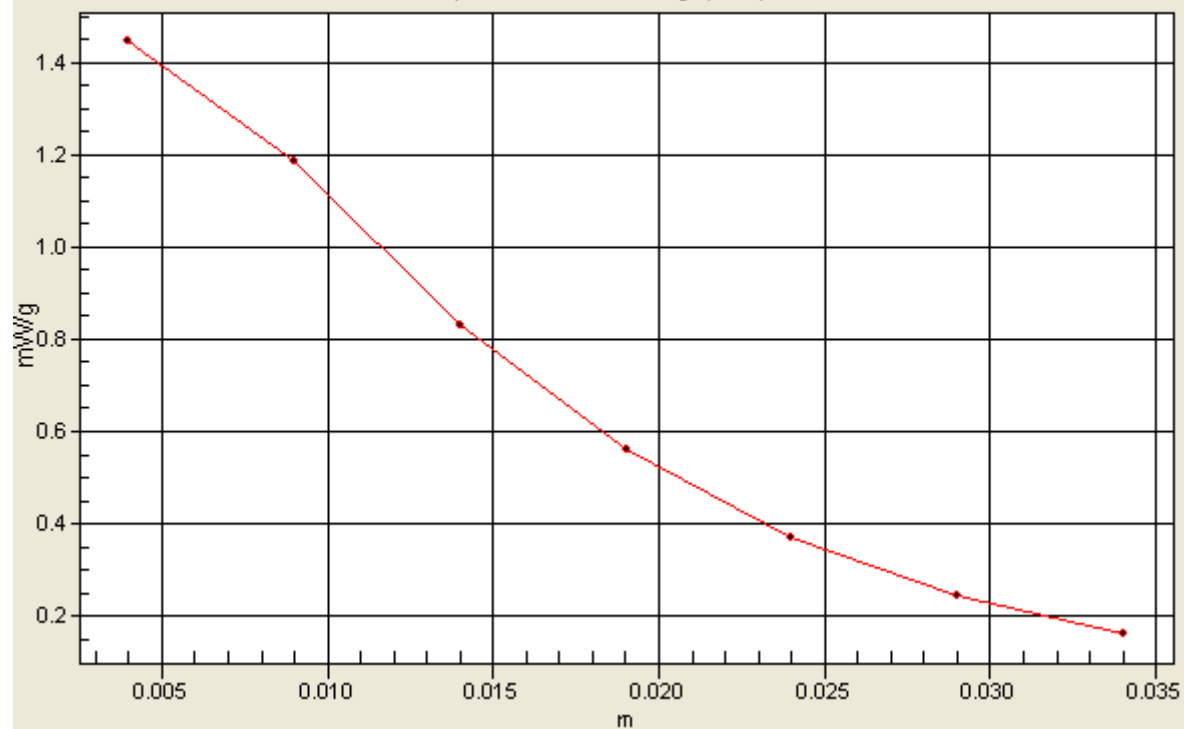
**SAR(1 g) = 1.34 mW/g; SAR(10 g) = 0.830 mW/g**

Maximum value of SAR (measured) = 1.45 mW/g



# 1g/10g Averaged SAR

SAR; Zoom Scan: Value Along Z, X=3, Y=4



Test Laboratory: SGS-SAR Lab

### GL300 GSM1900 GPRS 3TS 661CH Front side 0mm

**DUT: GL300; Type: GSM1900; Serial: NA**

Communication System: PCS1900-GPRS Mode; Frequency: 1880 MHz; Duty Cycle: 1:2.77

Medium: MSL1900 Medium parameters used:  $f = 1880$  MHz;  $\sigma = 1.53$  mho/m;  $\epsilon_r = 52.1$ ;  $\rho = 1000$  kg/m<sup>3</sup>

Phantom section: Flat Section

DASY4 Configuration:

- Probe: ES3DV3 - SN3088; ConvF(4.91, 4.91, 4.91); Calibrated: 2012-11-26
- Sensor-Surface: 4mm (Mechanical Surface Detection)
- Electronics: DAE3 Sn569; Calibrated: 2012-11-27
- Phantom: SAM 1; Type: SAM V4.0; Serial: TP-1283
- Measurement SW: DASY4, V4.7 Build 80; Postprocessing SW: SEMCAD, V1.8 Build 186

**Body/Area Scan (7x9x1):** Measurement grid: dx=15mm, dy=15mm

Maximum value of SAR (measured) = 0.429 mW/g

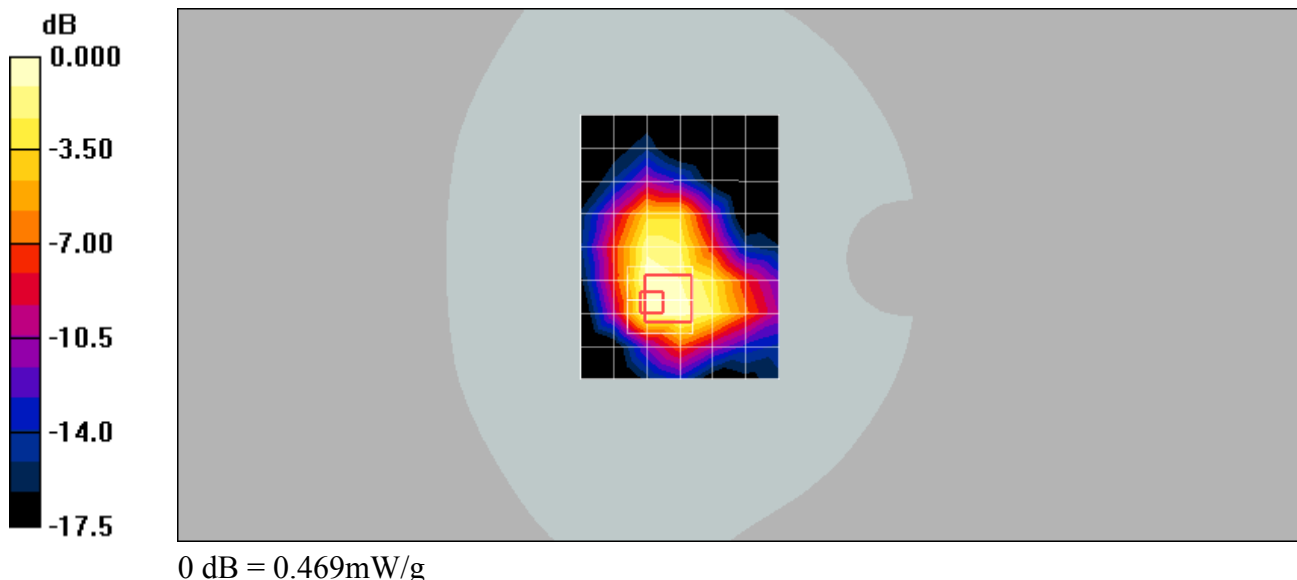
**Body/Zoom Scan (7x7x7)/Cube 0:** Measurement grid: dx=5mm, dy=5mm, dz=5mm

Reference Value = 14.4 V/m; Power Drift = -0.192 dB

Peak SAR (extrapolated) = 0.797 W/kg

**SAR(1 g) = 0.411 mW/g; SAR(10 g) = 0.244 mW/g**

Maximum value of SAR (measured) = 0.469 mW/g



Test Laboratory: SGS-SAR Lab

### GL300 GSM1900 GPRS 3TS 661CH Top side 0mm

**DUT: GL300; Type: GSM1900; Serial: NA**

Communication System: PCS1900-GPRS Mode; Frequency: 1880 MHz; Duty Cycle: 1:2.77

Medium: MSL1900 Medium parameters used:  $f = 1880$  MHz;  $\sigma = 1.53$  mho/m;  $\epsilon_r = 52.1$ ;  $\rho = 1000$  kg/m<sup>3</sup>

Phantom section: Flat Section

DASY4 Configuration:

- Probe: ES3DV3 - SN3088; ConvF(4.91, 4.91, 4.91); Calibrated: 2012-11-26
- Sensor-Surface: 4mm (Mechanical Surface Detection)
- Electronics: DAE3 Sn569; Calibrated: 2012-11-27
- Phantom: SAM 1; Type: SAM V4.0; Serial: TP-1283
- Measurement SW: DASY4, V4.7 Build 80; Postprocessing SW: SEMCAD, V1.8 Build 186

**Body/Area Scan (7x9x1):** Measurement grid: dx=15mm, dy=15mm

Maximum value of SAR (measured) = 0.412 mW/g

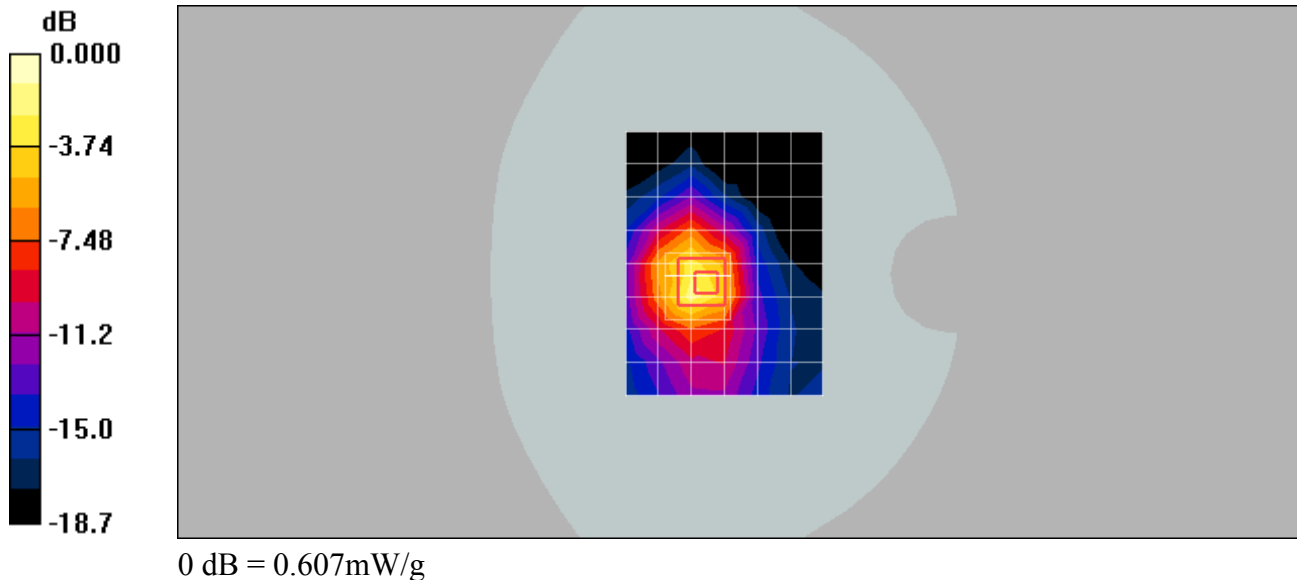
**Body/Zoom Scan (7x7x7)/Cube 0:** Measurement grid: dx=5mm, dy=5mm, dz=5mm

Reference Value = 13.6 V/m; Power Drift = -0.008 dB

Peak SAR (extrapolated) = 0.992 W/kg

**SAR(1 g) = 0.507 mW/g; SAR(10 g) = 0.229 mW/g**

Maximum value of SAR (measured) = 0.607 mW/g



Test Laboratory: SGS-SAR Lab

**GL300 GSM1900 GPRS 3TS 661CH Botttom side 0mm**

**DUT: GL300; Type: GSM1900; Serial: NA**

Communication System: PCS1900-GPRS Mode; Frequency: 1880 MHz;Duty Cycle: 1:2.77

Medium: MSL1900 Medium parameters used:  $f = 1880$  MHz;  $\sigma = 1.53$  mho/m;  $\epsilon_r = 52.1$ ;  $\rho = 1000$  kg/m<sup>3</sup>

Phantom section: Flat Section

DASY4 Configuration:

- Probe: ES3DV3 - SN3088; ConvF(4.91, 4.91, 4.91); Calibrated: 2012-11-26
- Sensor-Surface: 4mm (Mechanical Surface Detection)
- Electronics: DAE3 Sn569; Calibrated: 2012-11-27
- Phantom: SAM 1; Type: SAM V4.0; Serial: TP-1283
- Measurement SW: DASY4, V4.7 Build 80; Postprocessing SW: SEMCAD, V1.8 Build 186

**Body/Area Scan (7x9x1):** Measurement grid: dx=15mm, dy=15mm

Maximum value of SAR (measured) = 0.030 mW/g

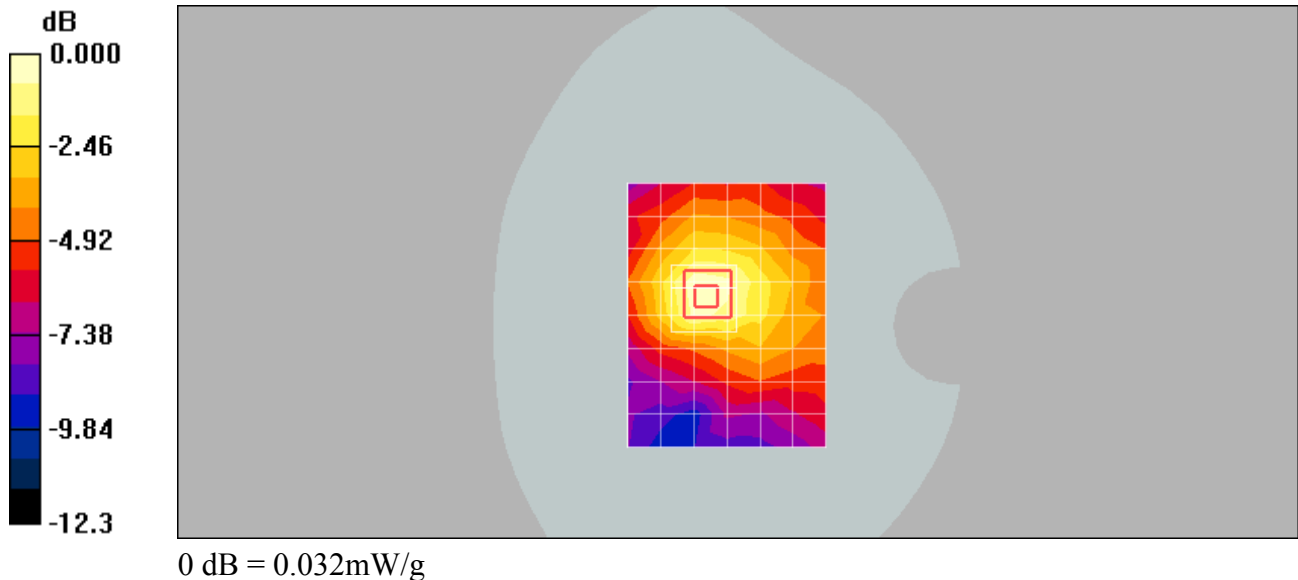
**Body/Zoom Scan (7x7x7)/Cube 0:** Measurement grid: dx=5mm, dy=5mm, dz=5mm

Reference Value = 3.85 V/m; Power Drift = -0.025 dB

Peak SAR (extrapolated) = 0.046 W/kg

**SAR(1 g) = 0.029 mW/g; SAR(10 g) = 0.019 mW/g**

Maximum value of SAR (measured) = 0.032 mW/g



Test Laboratory: SGS-SAR Lab

### GL300 GSM1900 GPRS 3TS 661CH Left side 0mm

**DUT: GL300; Type: GSM1900; Serial: NA**

Communication System: PCS1900-GPRS Mode; Frequency: 1880 MHz; Duty Cycle: 1:2.77

Medium: MSL1900 Medium parameters used:  $f = 1880$  MHz;  $\sigma = 1.53$  mho/m;  $\epsilon_r = 52.1$ ;  $\rho = 1000$  kg/m<sup>3</sup>

Phantom section: Flat Section

DASY4 Configuration:

- Probe: ES3DV3 - SN3088; ConvF(4.91, 4.91, 4.91); Calibrated: 2012-11-26
- Sensor-Surface: 4mm (Mechanical Surface Detection)
- Electronics: DAE3 Sn569; Calibrated: 2012-11-27
- Phantom: SAM 1; Type: SAM V4.0; Serial: TP-1283
- Measurement SW: DASY4, V4.7 Build 80; Postprocessing SW: SEMCAD, V1.8 Build 186

**Body/Area Scan (7x9x1):** Measurement grid: dx=15mm, dy=15mm

Maximum value of SAR (measured) = 0.338 mW/g

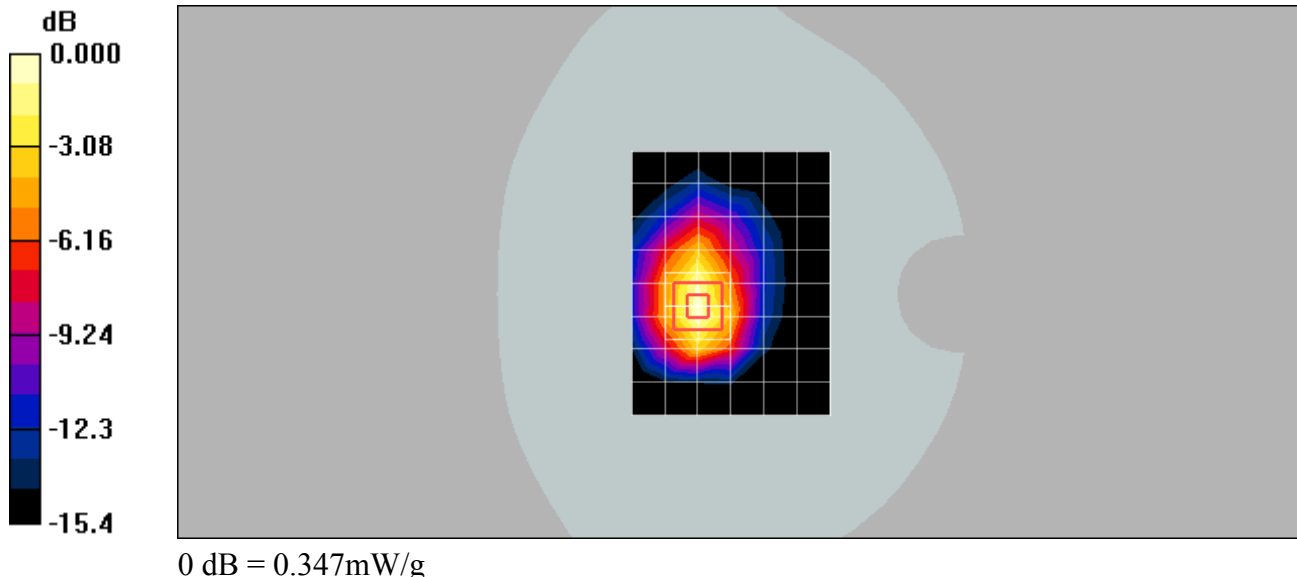
**Body/Zoom Scan (7x7x7)/Cube 0:** Measurement grid: dx=5mm, dy=5mm, dz=5mm

Reference Value = 9.15 V/m; Power Drift = -0.128 dB

Peak SAR (extrapolated) = 0.470 W/kg

**SAR(1 g) = 0.308 mW/g; SAR(10 g) = 0.175 mW/g**

Maximum value of SAR (measured) = 0.347 mW/g





Test Laboratory: SGS-SAR Lab

### GL300 GSM1900 GPRS 3TS 661CH Right side 0mm

**DUT: GL300; Type: GSM1900; Serial: NA**

Communication System: PCS1900-GPRS Mode; Frequency: 1880 MHz; Duty Cycle: 1:2.77

Medium: MSL1900 Medium parameters used:  $f = 1880$  MHz;  $\sigma = 1.53$  mho/m;  $\epsilon_r = 52.1$ ;  $\rho = 1000$  kg/m<sup>3</sup>

Phantom section: Flat Section

DASY4 Configuration:

- Probe: ES3DV3 - SN3088; ConvF(4.91, 4.91, 4.91); Calibrated: 2012-11-26
- Sensor-Surface: 4mm (Mechanical Surface Detection)
- Electronics: DAE3 Sn569; Calibrated: 2012-11-27
- Phantom: SAM 1; Type: SAM V4.0; Serial: TP-1283
- Measurement SW: DASY4, V4.7 Build 80; Postprocessing SW: SEMCAD, V1.8 Build 186

**Body/Area Scan (7x9x1):** Measurement grid: dx=15mm, dy=15mm

Maximum value of SAR (measured) = 0.366 mW/g

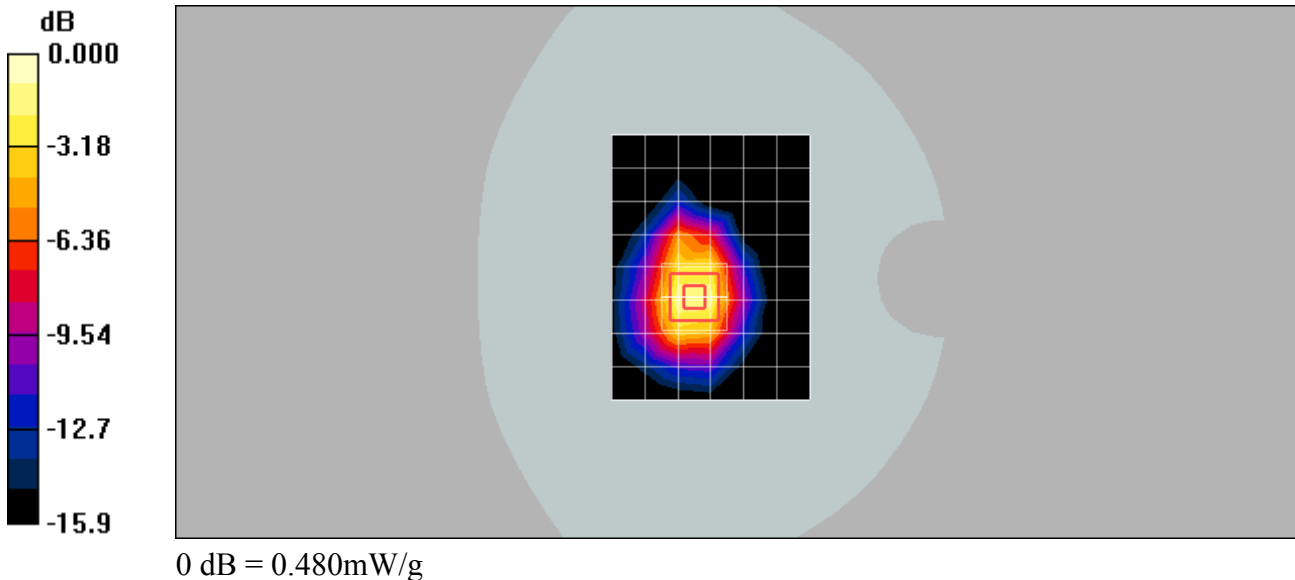
**Body/Zoom Scan (7x7x7)/Cube 0:** Measurement grid: dx=5mm, dy=5mm, dz=5mm

Reference Value = 14.5 V/m; Power Drift = -0.062 dB

Peak SAR (extrapolated) = 0.668 W/kg

**SAR(1 g) = 0.421 mW/g; SAR(10 g) = 0.233 mW/g**

Maximum value of SAR (measured) = 0.480 mW/g



Test Laboratory: SGS-SAR Lab

### GL300 GSM1900 GPRS 3TS 810CH Back side 0mm-repeat

**DUT: GL300; Type: GSM1900; Serial: NA**

Communication System: PCS1900-GPRS Mode; Frequency: 1909.8 MHz; Duty Cycle: 1:2.77

Medium: MSL1900 Medium parameters used:  $f = 1910$  MHz;  $\sigma = 1.57$  mho/m;  $\epsilon_r = 52.1$ ;  $\rho = 1000$  kg/m<sup>3</sup>

Phantom section: Flat Section

DASY4 Configuration:

- Probe: ES3DV3 - SN3088; ConvF(4.91, 4.91, 4.91); Calibrated: 2012-11-26
- Sensor-Surface: 4mm (Mechanical Surface Detection)
- Electronics: DAE3 Sn569; Calibrated: 2012-11-27
- Phantom: SAM 1; Type: SAM V4.0; Serial: TP-1283
- Measurement SW: DASY4, V4.7 Build 80; Postprocessing SW: SEMCAD, V1.8 Build 186

**Body/Area Scan (7x9x1):** Measurement grid: dx=15mm, dy=15mm

Maximum value of SAR (measured) = 1.52 mW/g

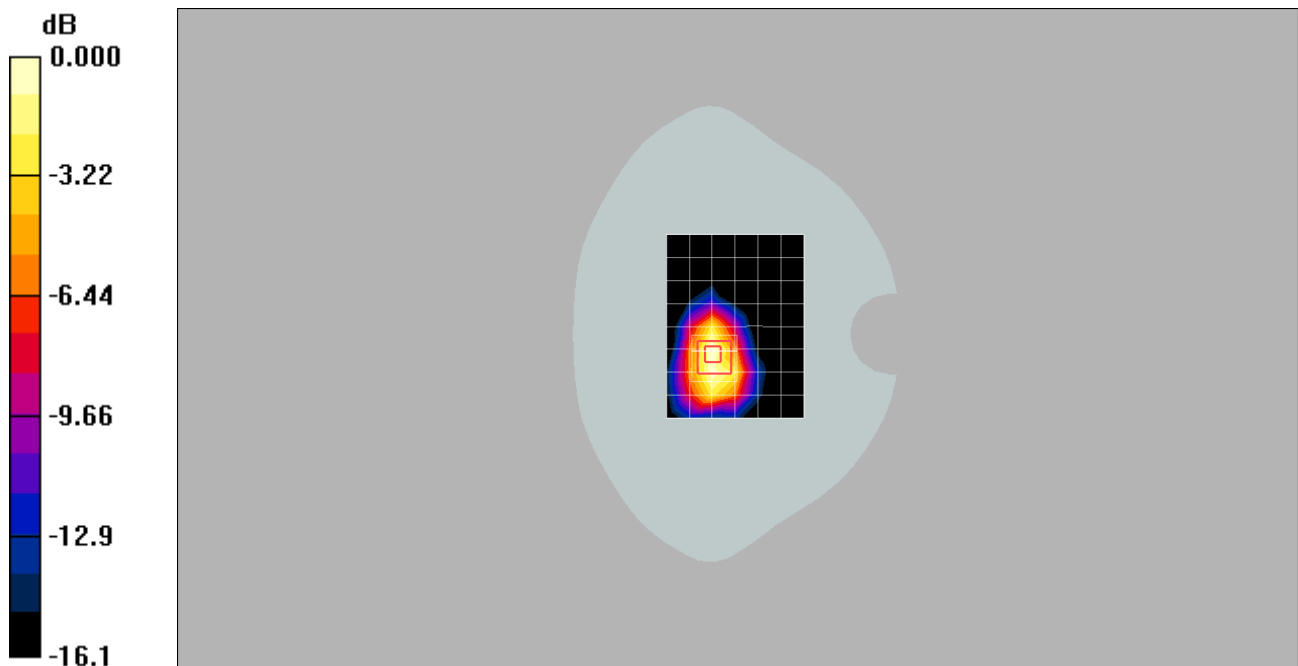
**Body/Zoom Scan (7x7x7)/Cube 0:** Measurement grid: dx=5mm, dy=5mm, dz=5mm

Reference Value = 12.98 V/m; Power Drift = -0.015 dB

Peak SAR (extrapolated) = 2.06 W/kg

**SAR(1 g) = 1.32 mW/g; SAR(10 g) = 0.826 mW/g**

Maximum value of SAR (measured) = 1.43 mW/g



0 dB = 1.43mW/g