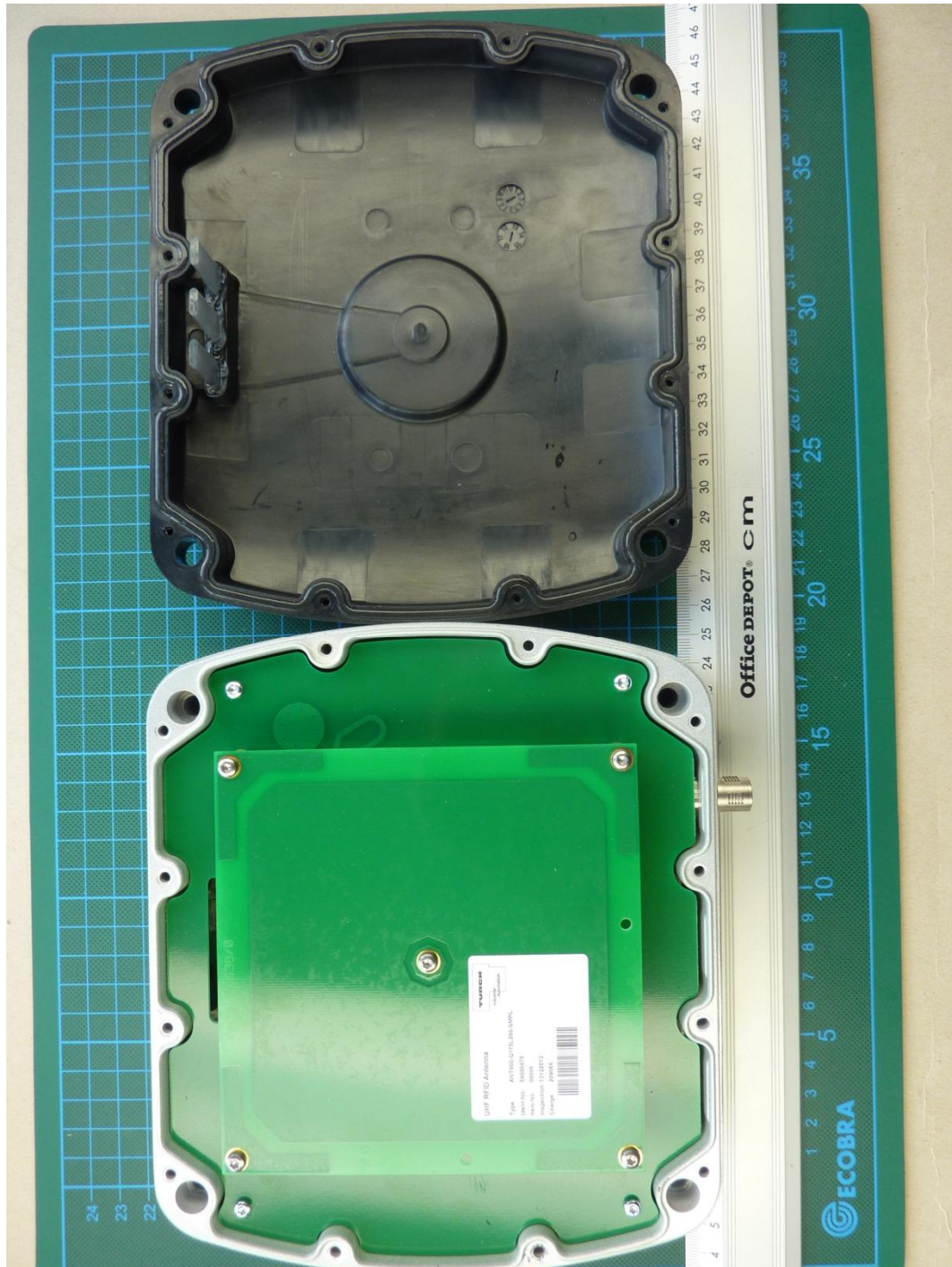
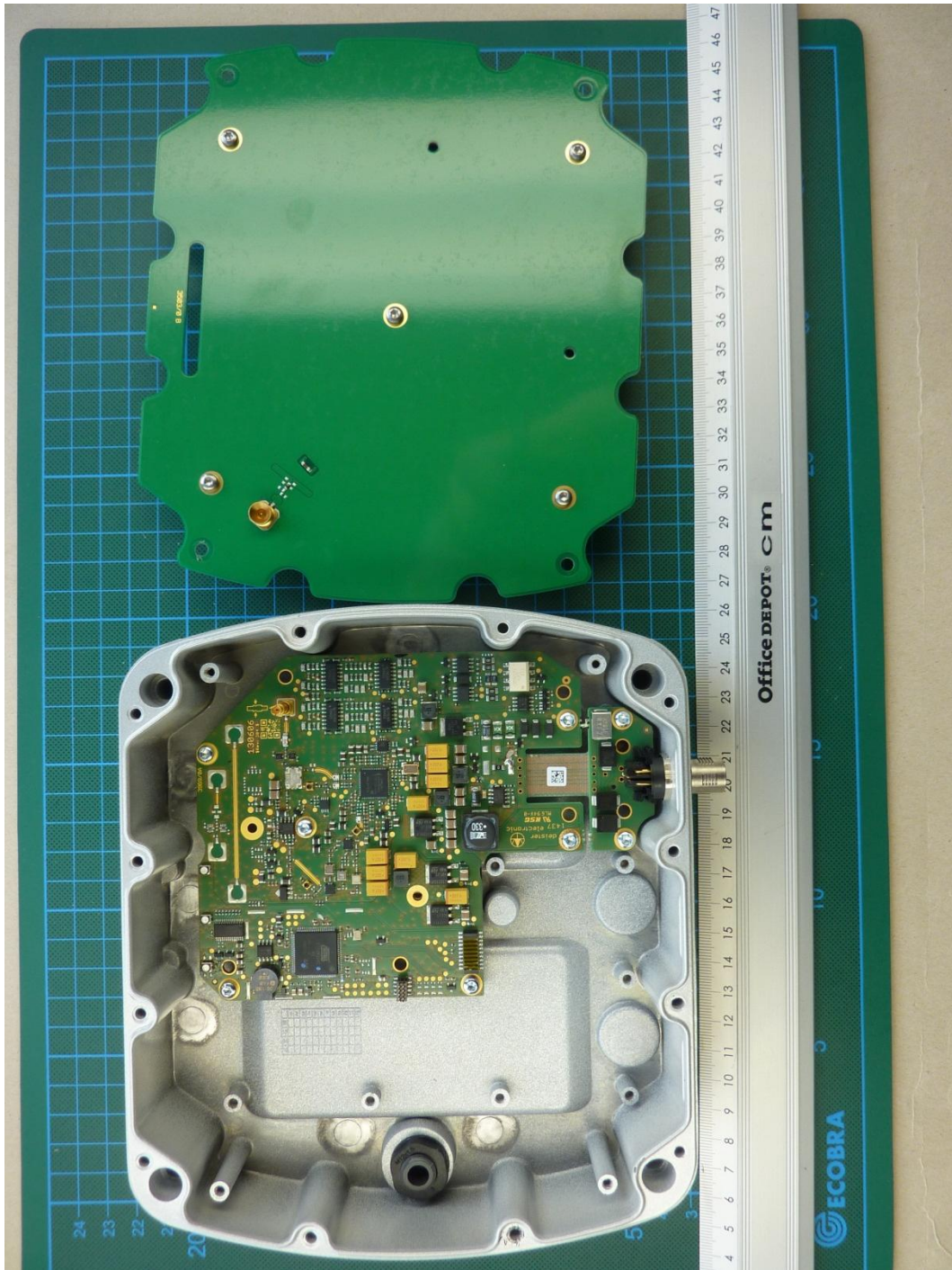


## Annex C: Internal photographs



153143\_5.JPG: TN902-Q175L200-H1147, cover removed

**Annex C: Internal photographs**



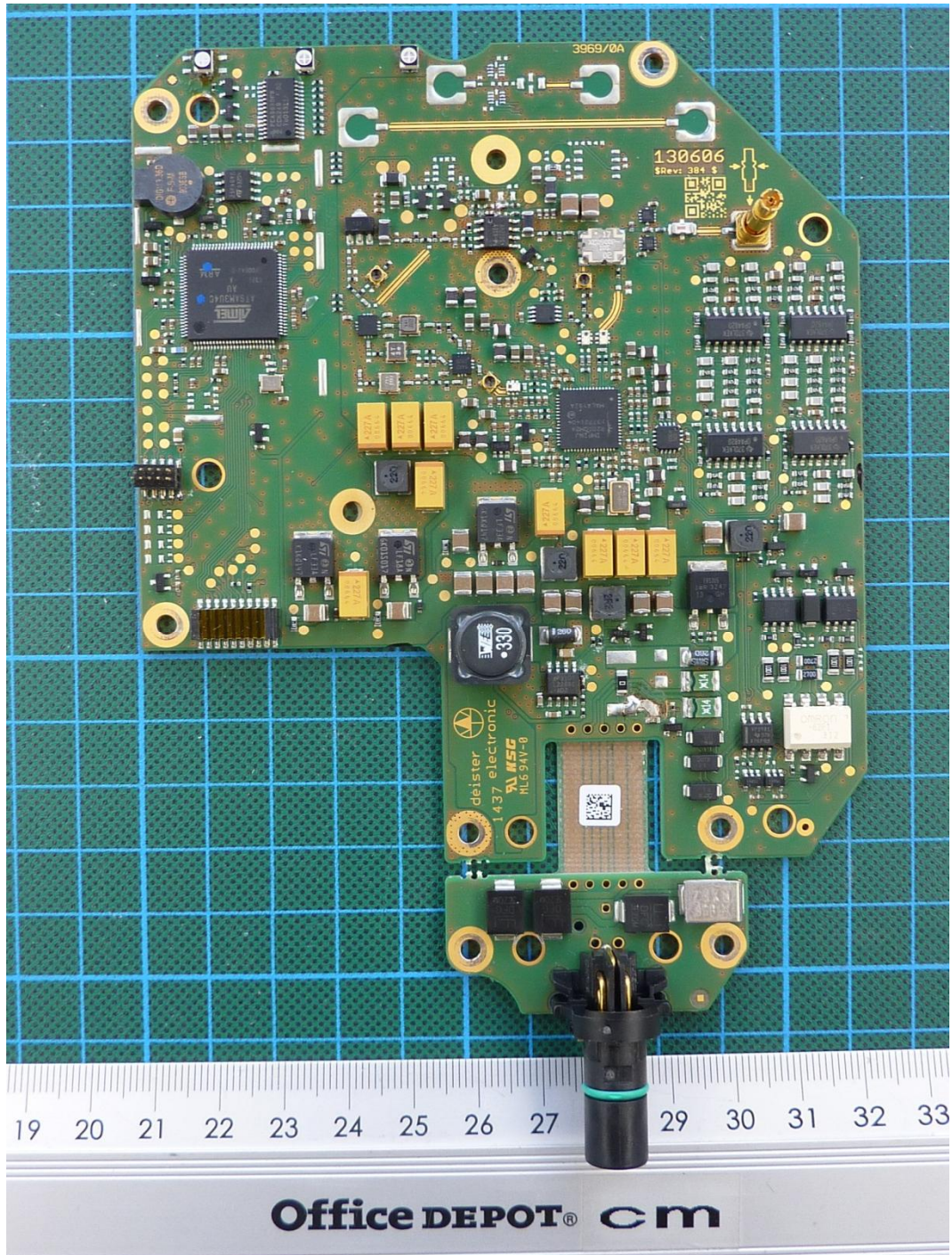
153143\_7.JPG: TN902-Q175L200-H1147, antenna removed

**Annex C: Internal photographs**



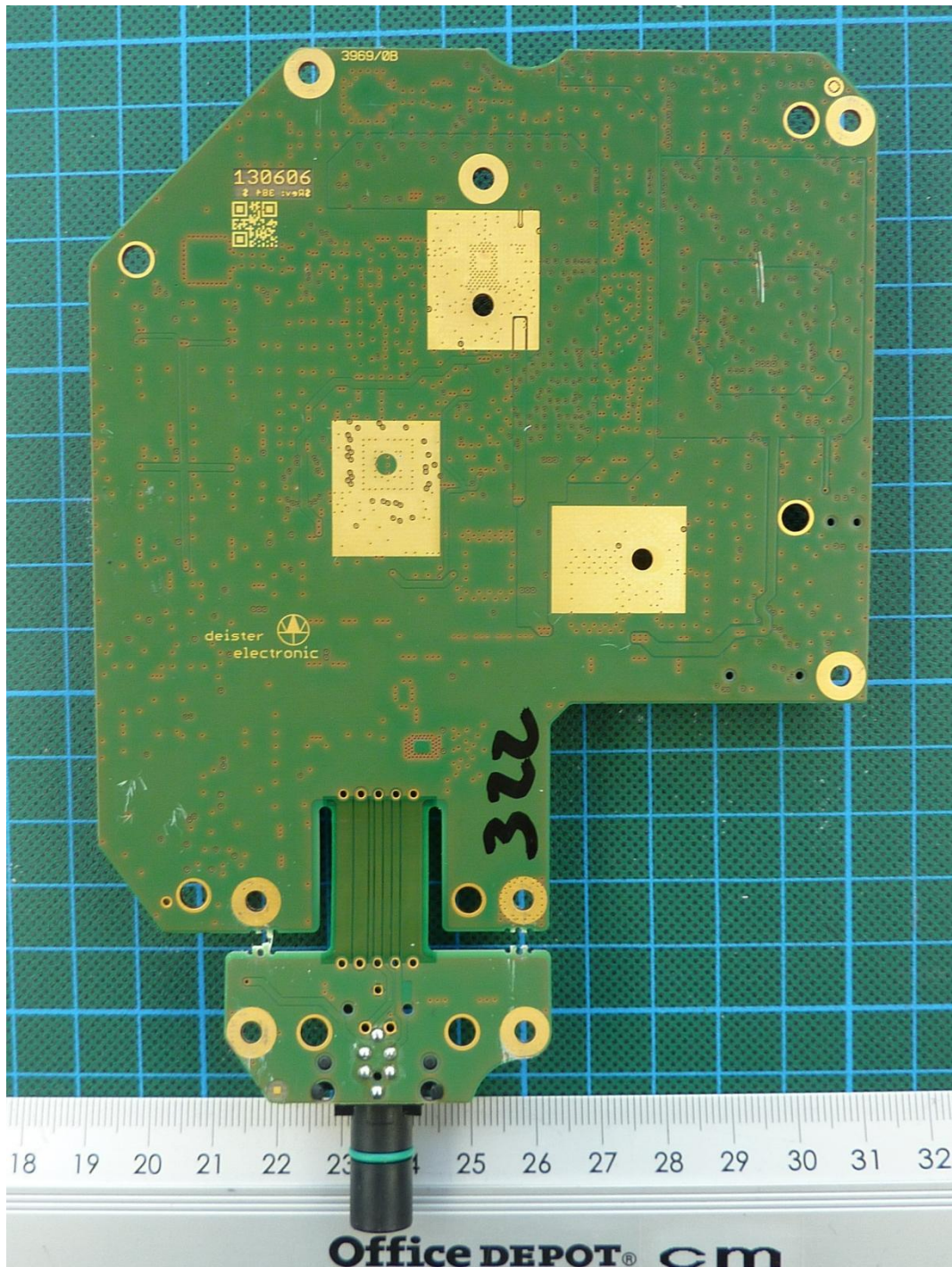
153143\_12.JPG: TN902-Q175L200-H1147, antenna, top view

**Annex C: Internal photographs**



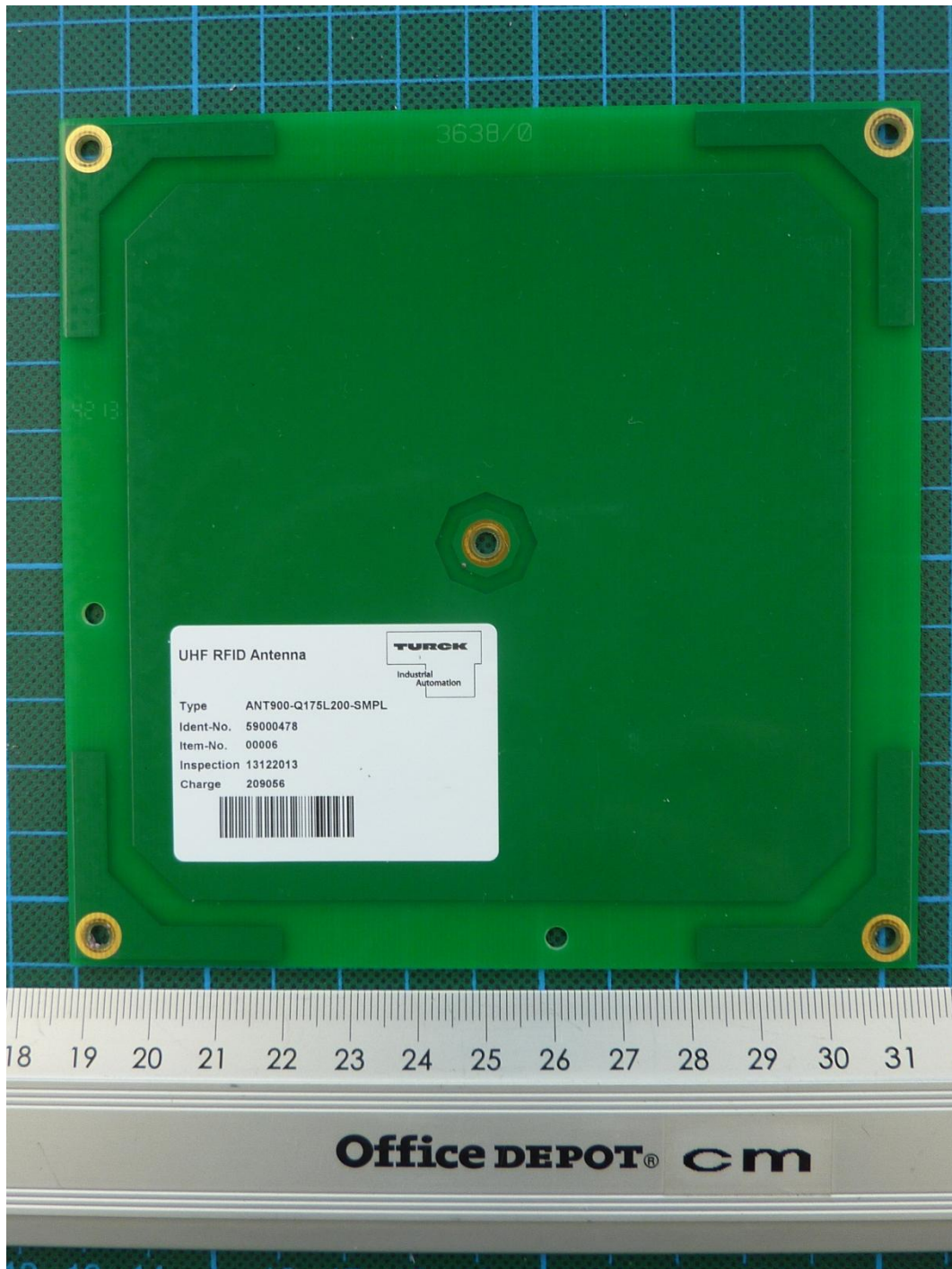
153143\_9.JPG: TN902-Q175L200-H1147, PCB 1, top view

## Annex C: Internal photographs



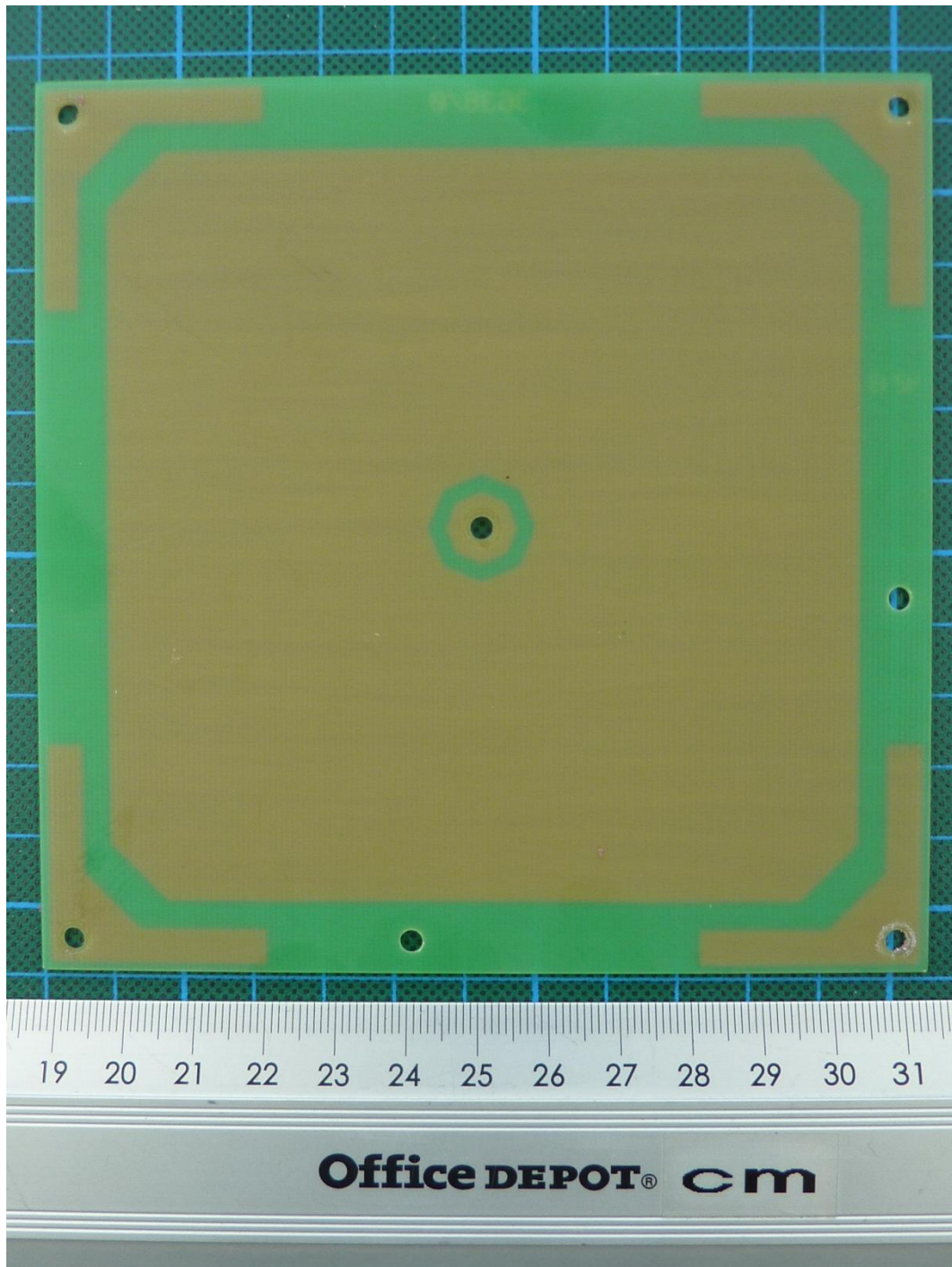
153143\_10.JPG: TN902-Q175L200-H1147, PCB 1, bottom view

**Annex C: Internal photographs**



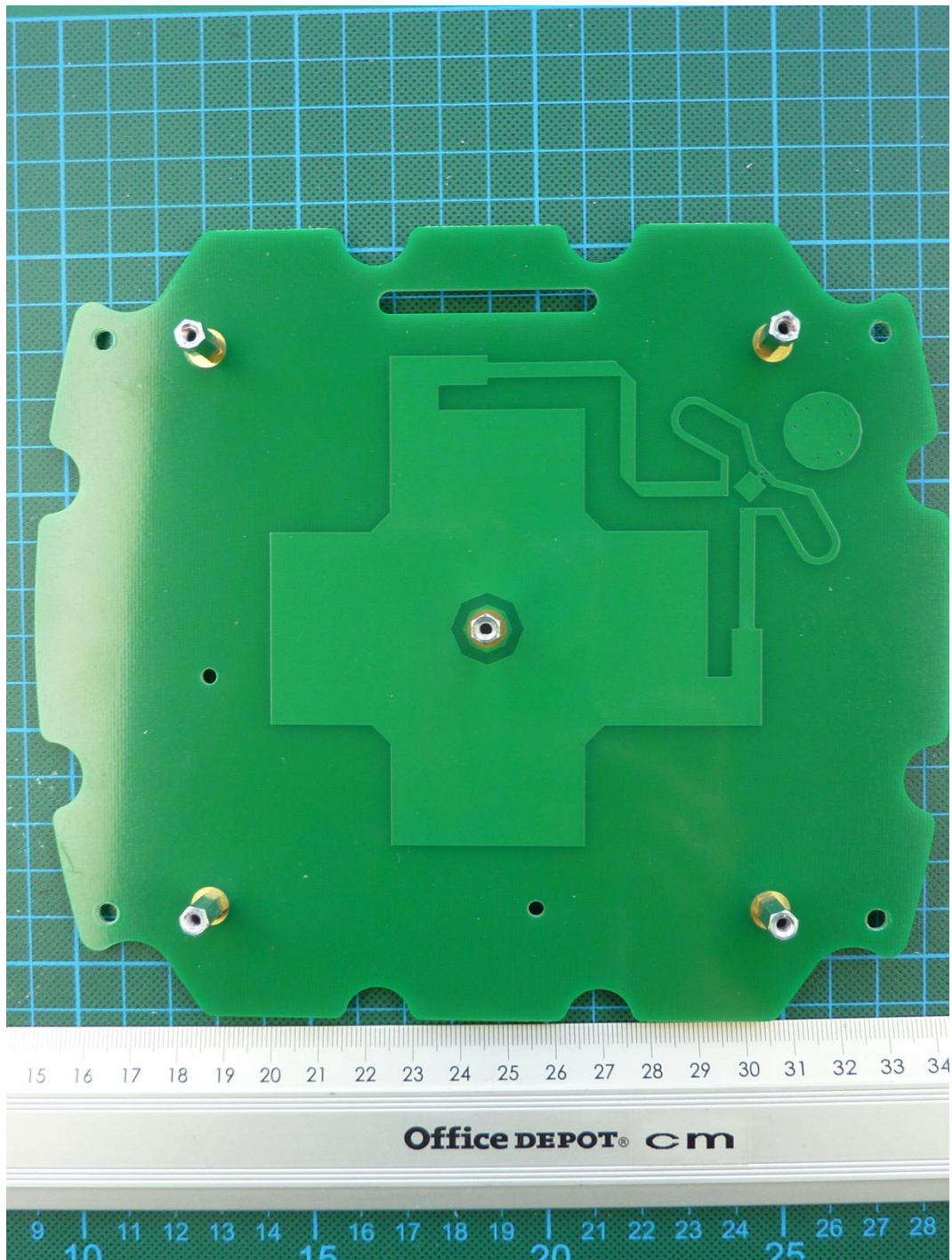
153143\_14.JPG: TN902-Q175L200-H1147, antenna PCB 1, top view

**Annex C: Internal photographs**



153143\_15.JPG: TN902-Q175L200-H1147, antenna PCB 1, bottom view

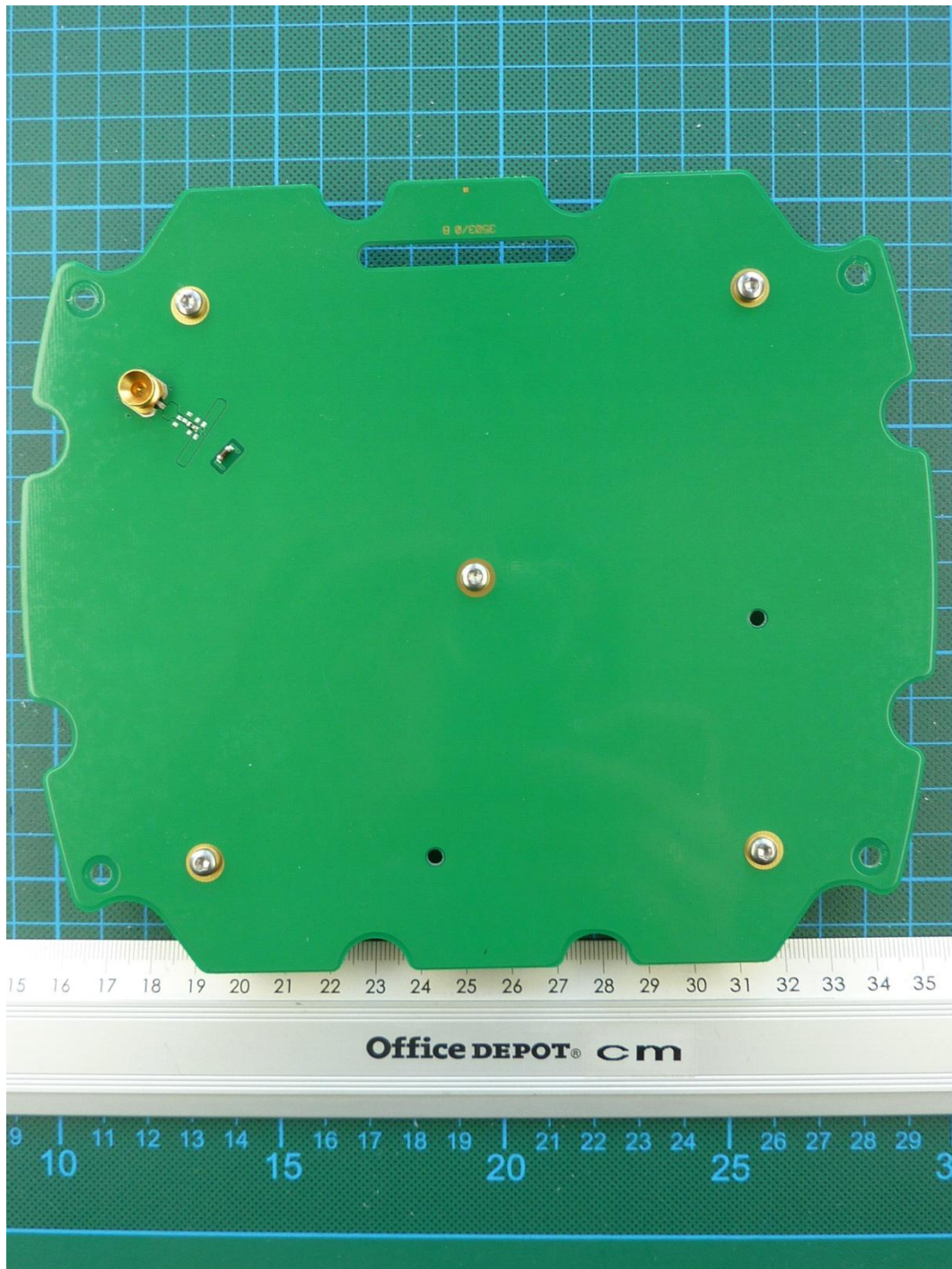
**Annex C: Internal photographs**



153143\_13.JPG: TN902-Q175L200-H1147, antenna PCB 2, top view



**Annex C: Internal photographs**



153143\_11.JPG: TN902-Q175L200-H1147, antenna PCB 2, bottom view