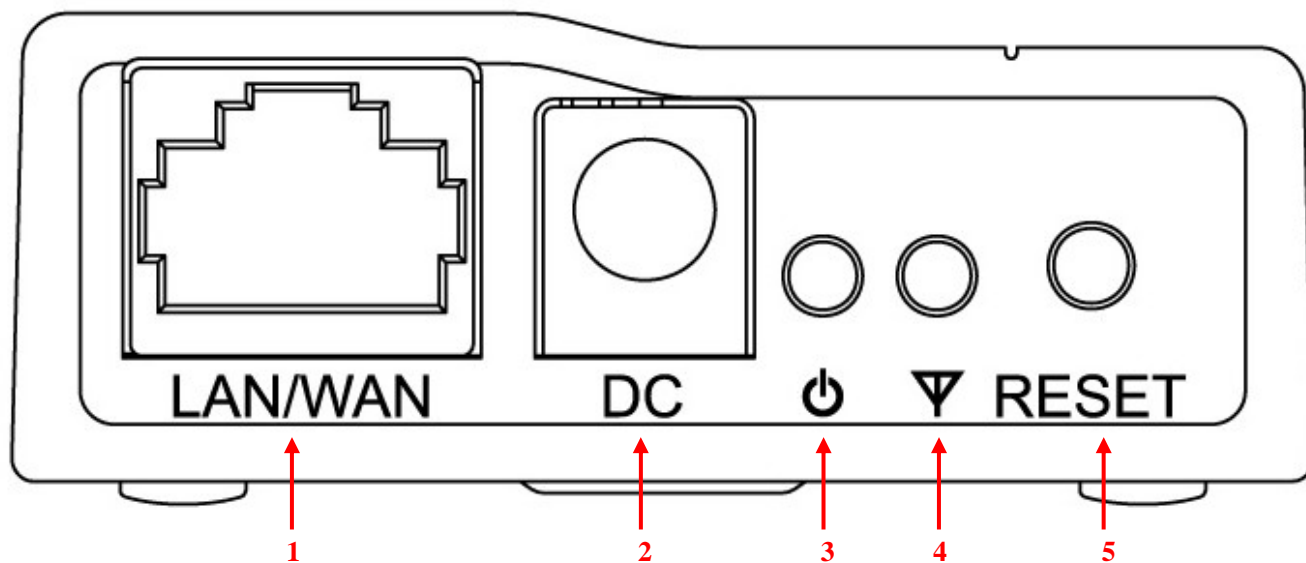


W901 User Manual

1、 W901 Accesories

W901, Internet wire,Power adapter, CD, User Menu

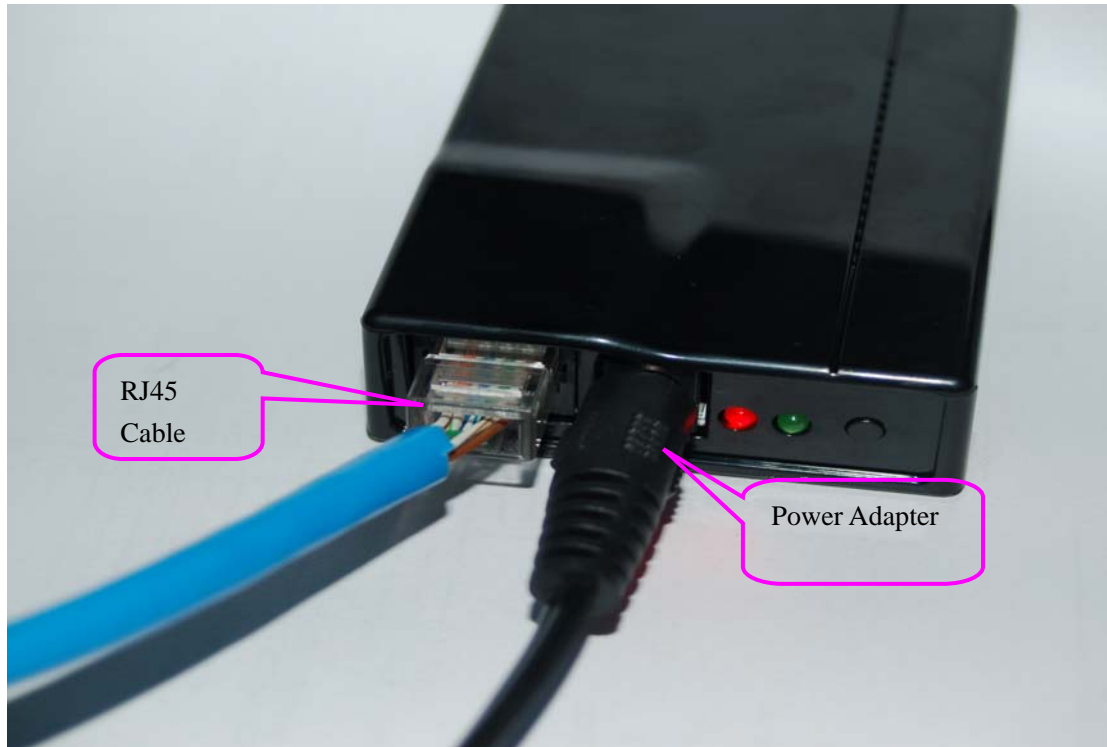
2、 Product panel board showed as Picture1



Picture 1

1	Internet connector
2	Power adapter connector
3	Power led
4	Working status led
5	Replacement key

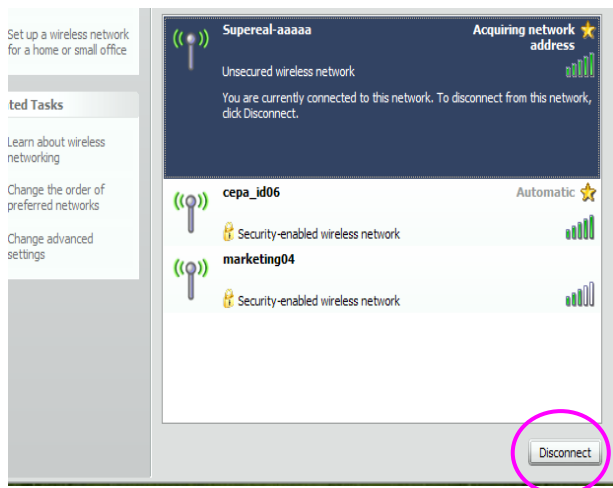
3、 W901 Connector instruction showed as Picture2



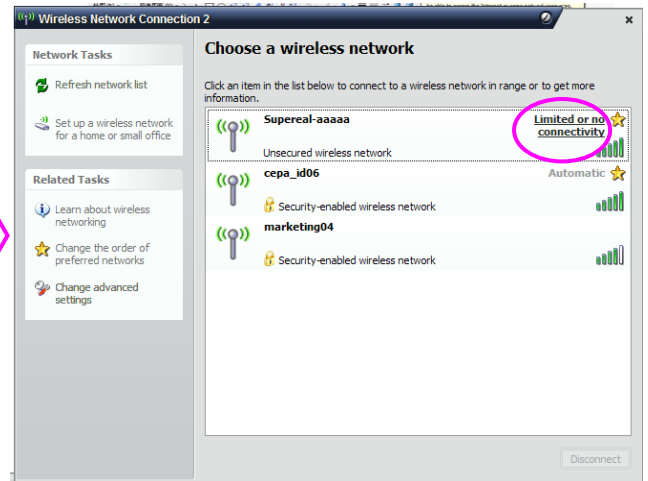
Picture 2

4、Internet connection

4-1、 If internet output connector do not need user code, can point W901 signal directly to connect the internet, showed as Picture3.Picture4.



Picture 3



Picture 4

4-2、 if internet output connector need user code, first come to broadband windows for dail number connection, then back to Procedure 5-1, boradband dail number windows as Picture 5.



Picture 5

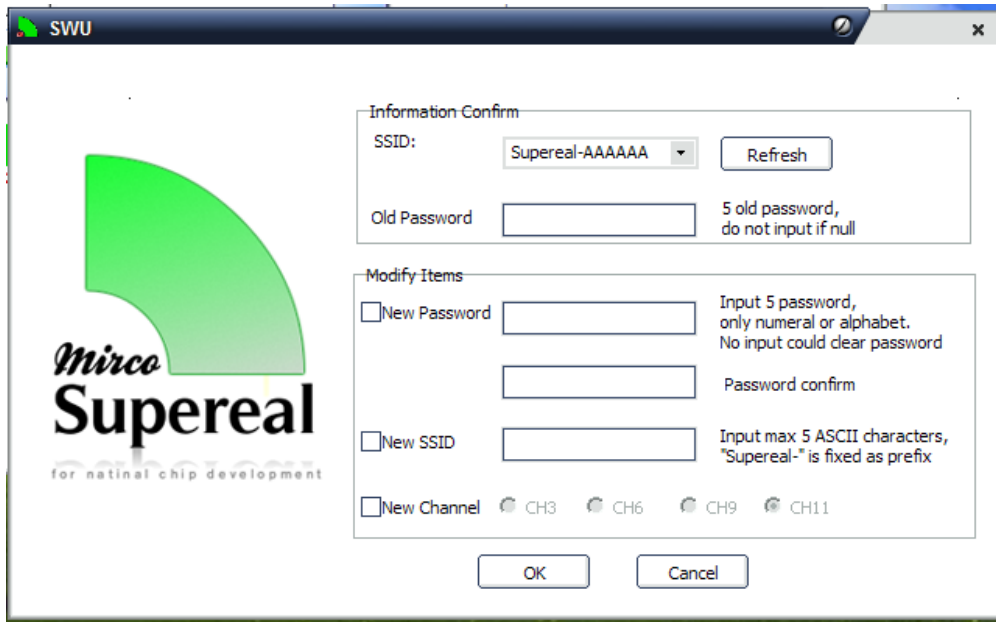
4-3、W901 support computer, smart phones and so on, which have WIFI' s function equipment inside.

5、 Network name and code setup

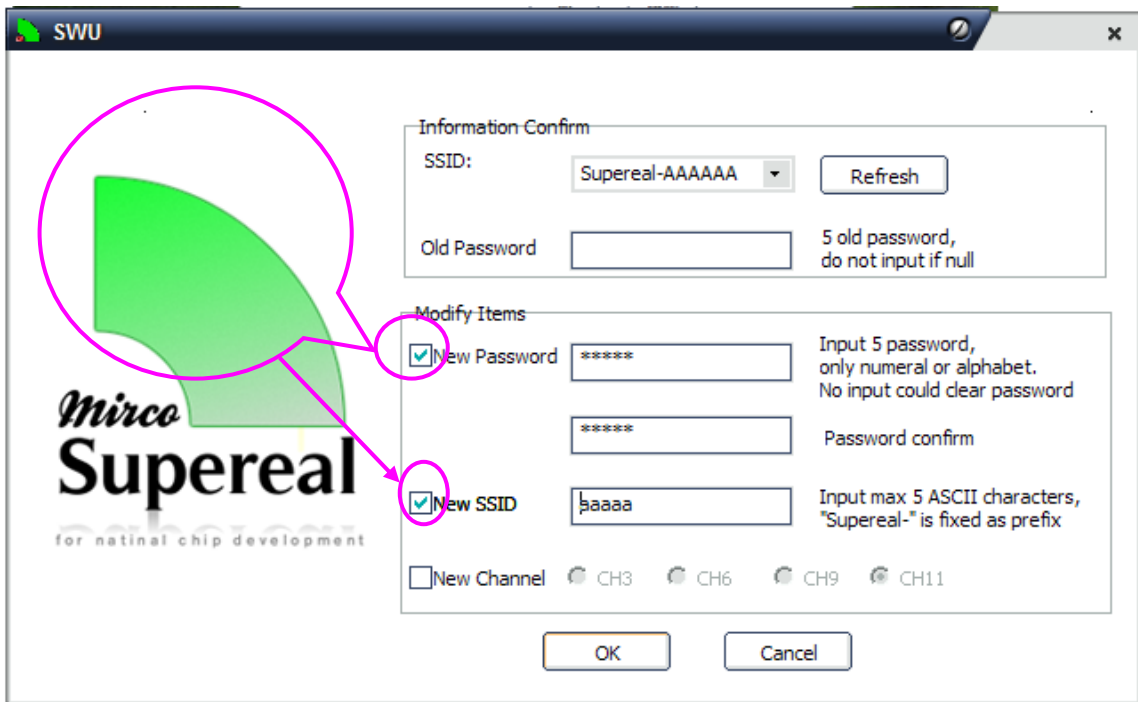
5-1、W901 Network name usually called: Supereal-XXXXXX, among them “Supereal” keep unchanged, “XXXXXX” can be modified.

5-2、W901 network factory windows default password: 88888.

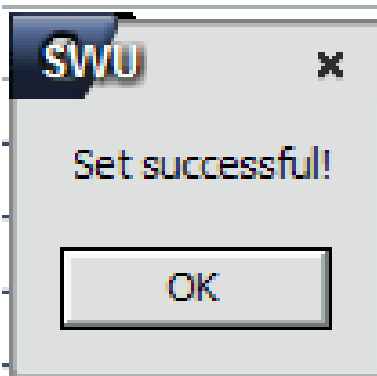
5-3、when require modify W901 network name and code, first, connect computer RJ45 connector through network wire directly, after get through the power, then start to modify with the CD accompany with the product. Software can support WindowsXP /Vista/7, can' t support MAC, software interface showed as Picture6, Picture7, Picture8.



Picture 6



Picture 7



Picture 8

5-4、when press replacement key for 3 seconds, code can be cleaned.

6、 Notes

FCC Statement:

This device complies with Part 15 of the FCC Rules. Operation is subject to the following two conditions:

- (1) this device may not cause harmful interference, and
- (2) this device must accept any interference received, including interference that may cause undesired operation. Changes or modifications not expressly approved by the party responsible for compliance could void the user's authority to operate the equipment.

NOTE

THE MANUFACTURER IS NOT RESPONSIBLE FOR ANY RADIO OR TV INTERFERENCE CAUSED BY UNAUTHORIZED MODIFICATIONS TO THIS EQUIPMENT. SUCH MODIFICATIONS COULD VOID THE USER'S AUTHORITY TO OPERATE THE EQUIPMENT.