

REVISION RECORD			
LTR	ECO NO.	APPROVED:	DATE:

D

C

B

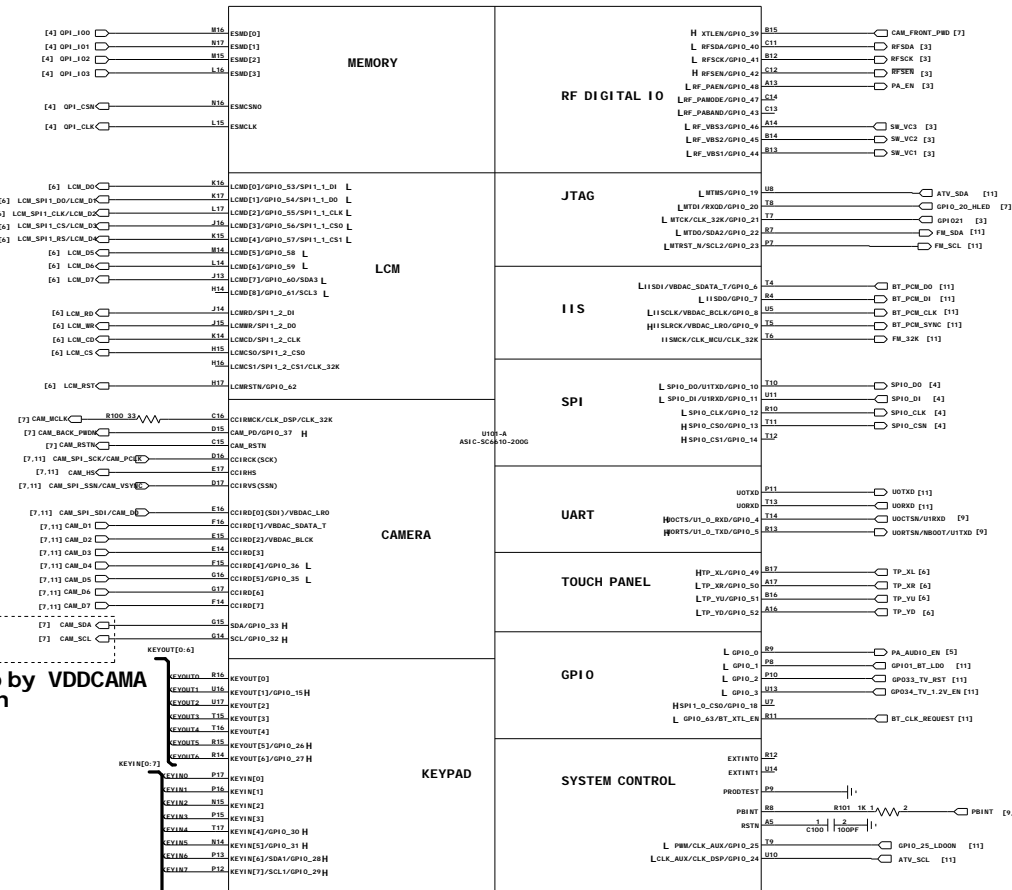
A

D

C

B

A



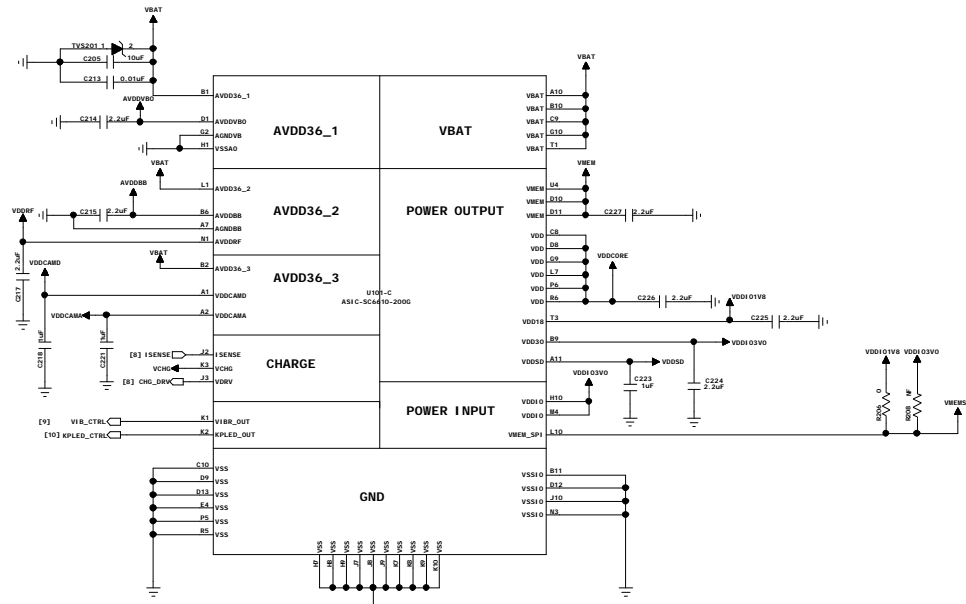
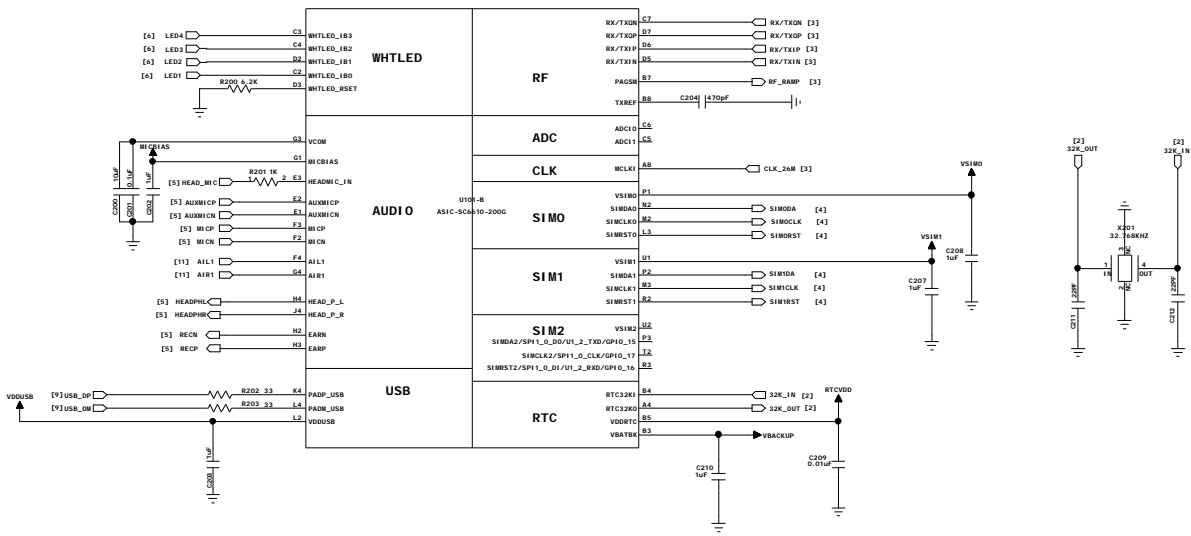
I2C has been pulled up by VDDCAMA
don't pull up it again

TITLE & REV: CG237_MAI NBOARD_V1.0_SCH	
DOCUMENT NO.: HW-SC6610-SCH-2011-0001	

DESIGNER: LLB	DATE: 2011/04/08
EOA: LS	DATE: 2011/04/08
APPROVED:	DATE: 2011/04/08

DEPARTMENT: Hardware RD.
COMPANY: ITALCOM GROUP

REVISION RECORD			
LTR	ECO NO.	APPROVED:	DATE:



TITLE & REV: CG237_MAI NBOARD_V1.0_SCH
 DOCUMENT NO.: HW-SC6610-SCH-2011-0001

DESIGNER: LLB
 DATE: 2011/04/08
 EGA: LS
 DATE: 2011/04/08
 APPROVED:

DEPARTMENT: Hardware RD.
 COMPANY: ITALCOM GROUP
 DATE: 2011/04/08

REVISION RECORD			
LTR	ECO NO.	APPROVED:	DATE:

D

C

B

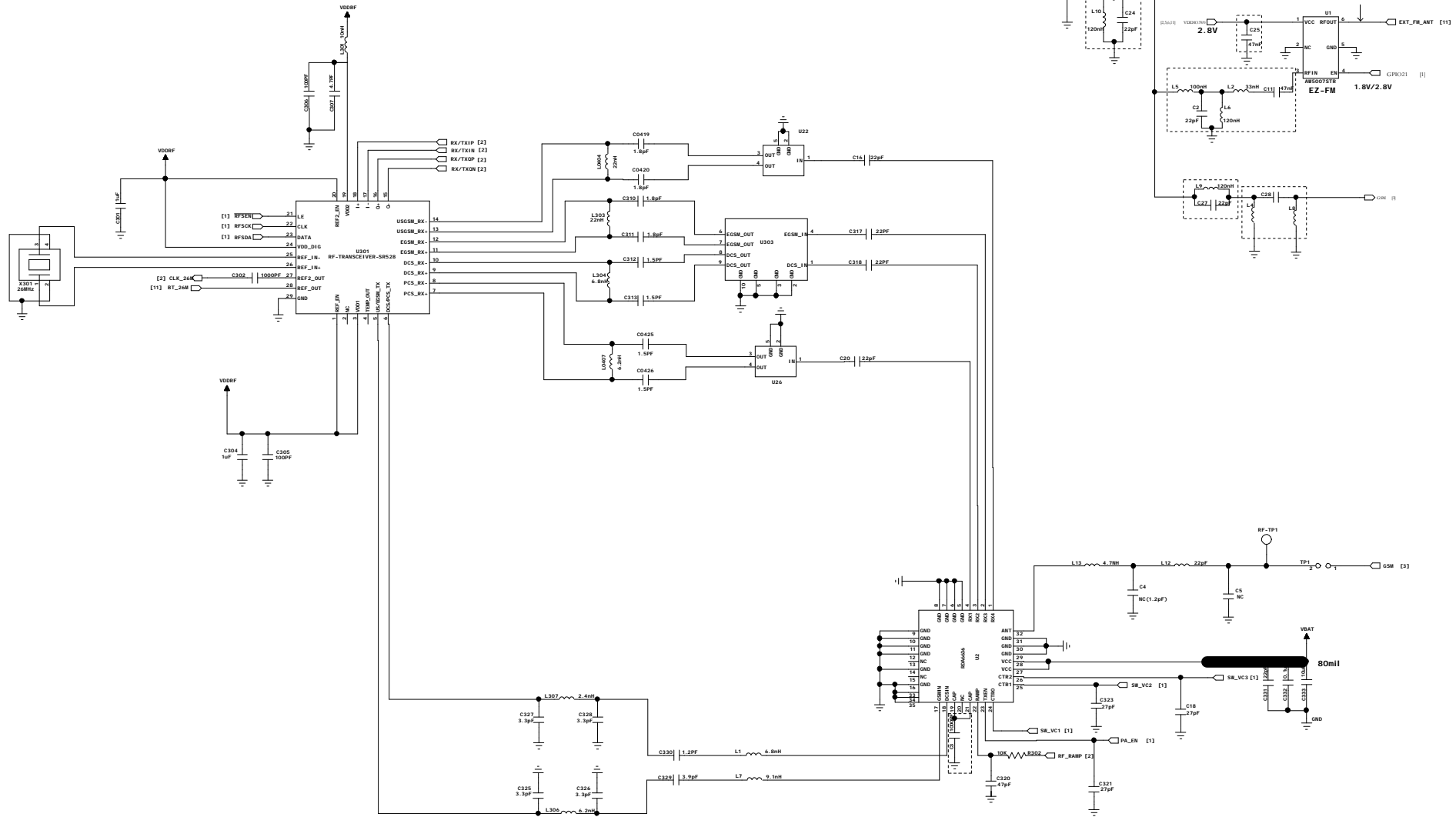
A

D

C

B

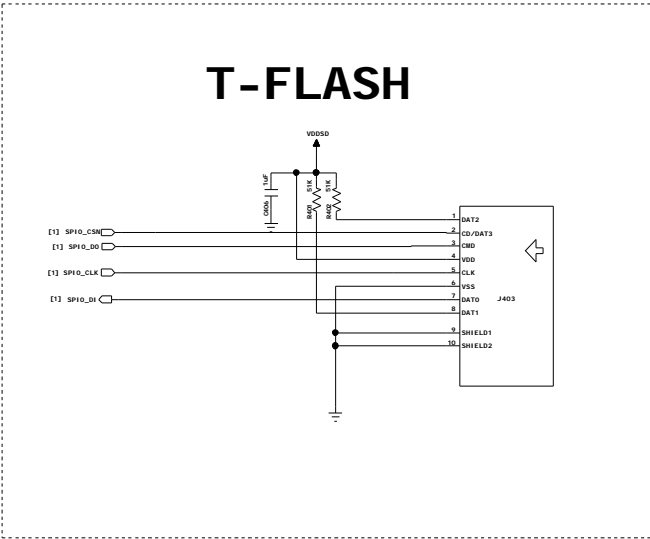
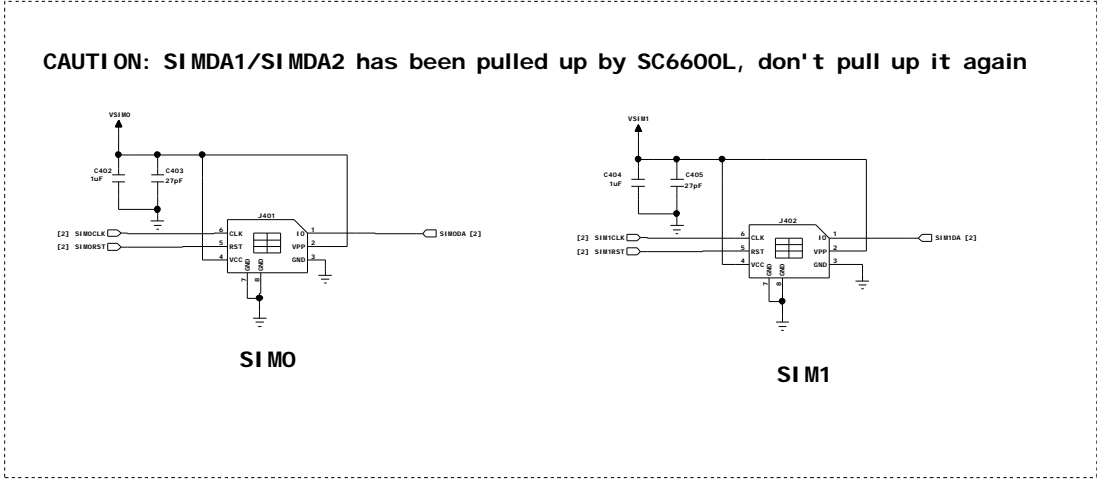
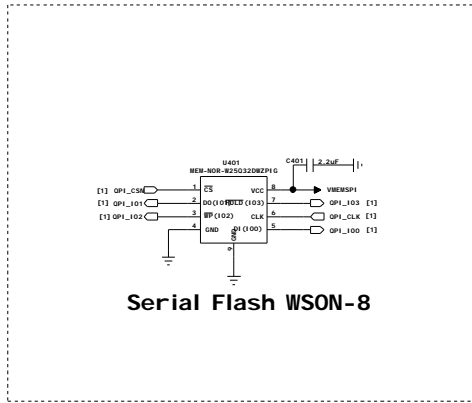
A



TITLE & REV: CG237_MAI NBOARD_V1.0_SCH
 DOCUMENT NO.: HW-SC6610-SCH-2011-0001

DESIGNER: LLB	DATED: 2011/04/08	DEPARTMENT: Hardware RD.
EOA: LS	DATED: 2011/04/08	COMPANY: ITALCOM GROUP
APPROVED:	DATED: 2011/04/08	

REVISION RECORD			
LTR	ECO NO.	APPROVED:	DATE:

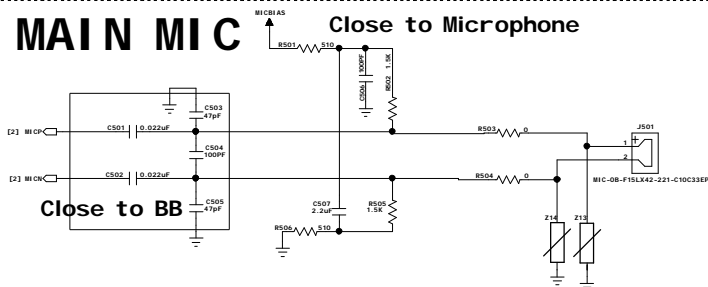


TITLE & REV:		CG237_MAINBOARD_V1.0_SCH	
DOCUMENT NO.:		HW-SC6610-SCH-2011-0001	

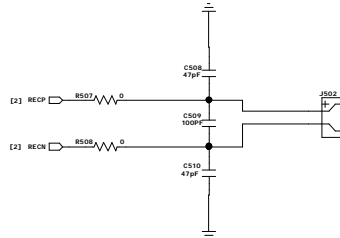
DESIGNER:	DATED:	DEPARTMENT:
LLB	2011/04/08	Hardware RD.
EOA:	DATED:	COMPANY:
LS	2011/04/08	ITALCOM GROUP
APPROVED:	DATED:	
	2011/04/08	

REVISION RECORD			
LTR	ECO NO.	APPROVED:	DATE:

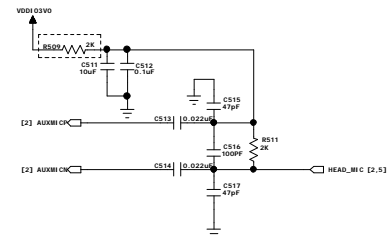
MAIN MIC



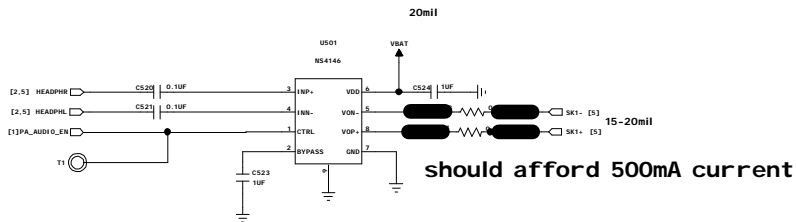
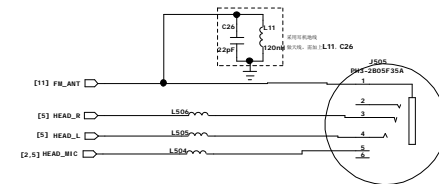
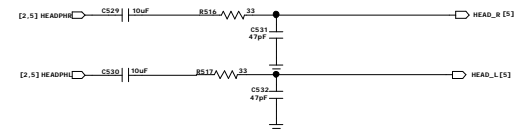
RECEIVER



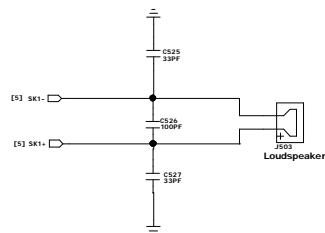
HEADPHONE



AUDIO JACK



CLASS d SPEAKER CIRCUIT



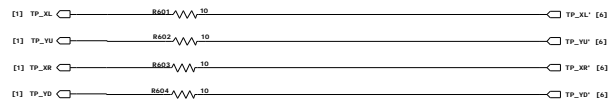
TITLE & REV: CG237_MAI NBOARD_V1.0_SCH
 DOCUMENT NO.: HW-SC6610-SCH-2011-0001

DESIGNER: LLB	DATED: 2011/04/08	DEPARTMENT: Hardware RD.
EOA: LS	DATED: 2011/04/08	COMPANY: ITALCOM GROUP
APPROVED:	DATED: 2011/04/08	

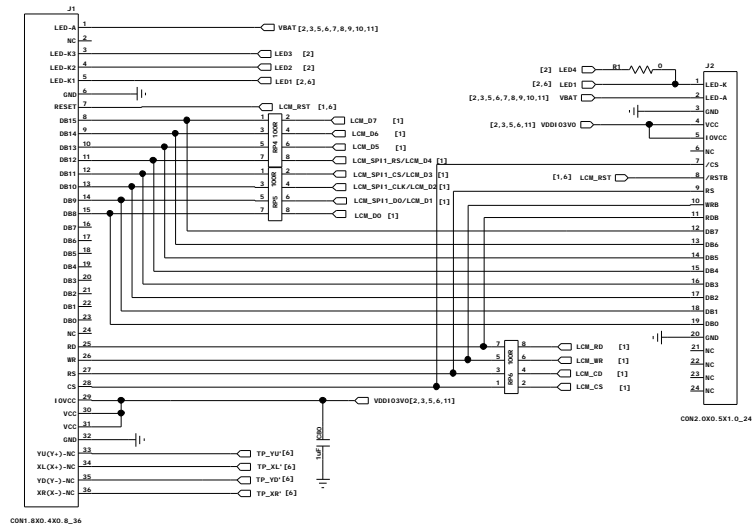
REVISION RECORD			
LTR	ECO NO.	APPROVED:	DATE:

TP

NOTE: Do not change the Touchpanel Circuit



LCD



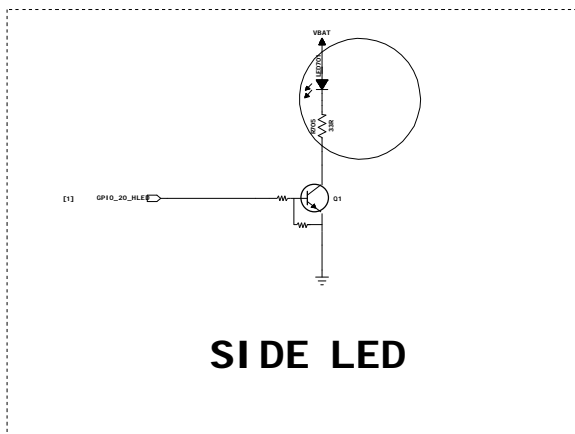
CON2_080_5X1_0_24

CON1_8X0_4X0_8_36

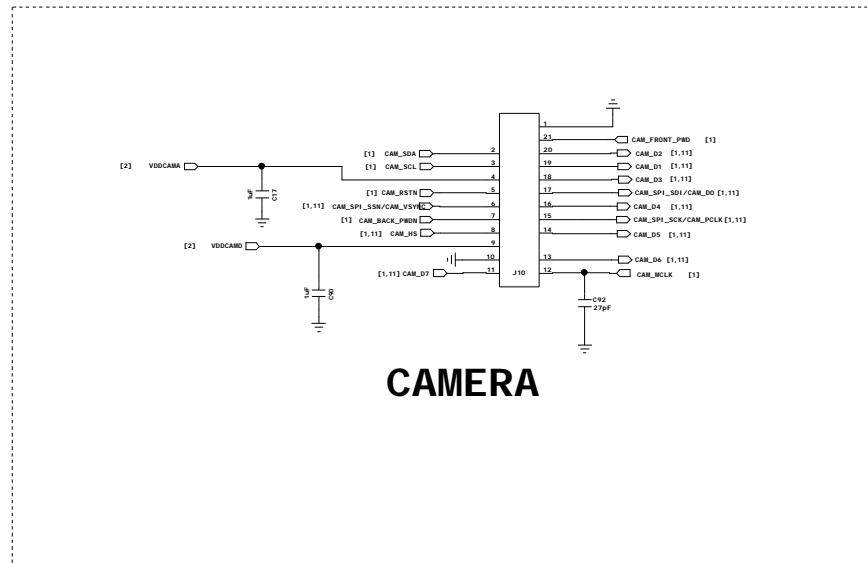
TITLE & REV:	CG237_MAI NBOARD_V1.0_SCH
DOCUMENT NO.:	HW-SC6610-SCH-2011-0001

DESIGNER:	LLB	DATED:	2011/04/08	DEPARTMENT:	Hardware RD.
EOA:	LS	DATED:	2011/04/08	COMPANY:	ITALCOM GROUP
APPROVED:		DATED:	2011/04/08		

REVISION RECORD			
LTH	ECO NO.	APPROVED:	DATE:



SIDE LED



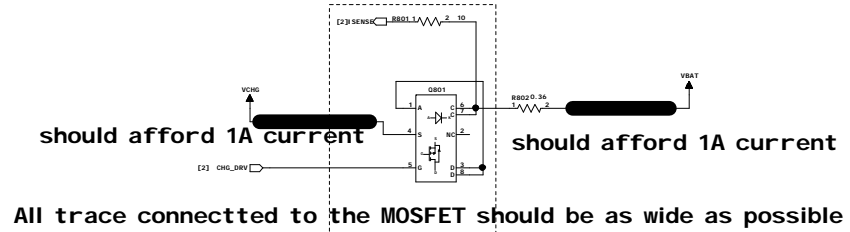
CAMERA

TITLE & REV:
CG237_MAINBOARD_V1.0_SCH
 DOCUMENT NO.:
HW-SC6610-SCH-2011-0001

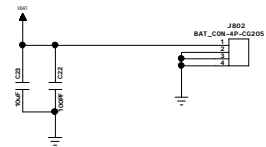
DESIGNER: LLB	DATED: 2011/04/08	DEPARTMENT: Hardware RD.
EOA: LS	DATED: 2011/04/08	COMPANY: ITALCOM GROUP
APPROVED:	DATED: 2011/04/08	

REVISION RECORD			
LTR	ECO NO.	APPROVED:	DATE:

CHARGE



BAT CONNECT



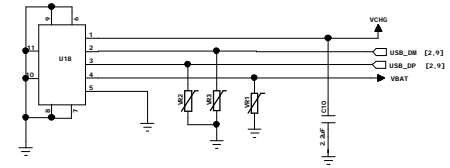
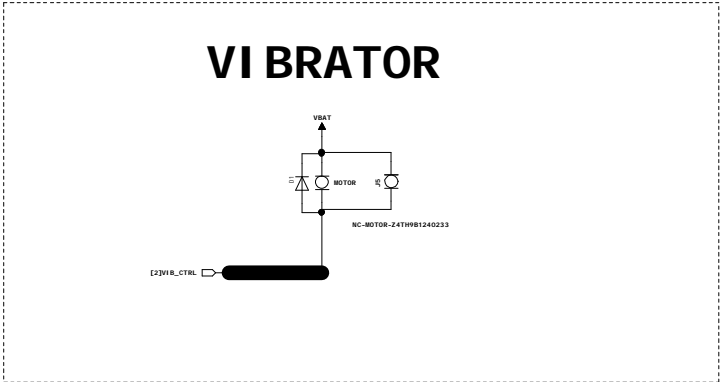
TITLE & REV:		CG237_MAI NBOARD_V1.0_SCH	
DOCUMENT NO.:		HW-SC6610-SCH-2011-0001	

DESIGNER:	DATED:
LLB	2011/04/08
EOA:	DATED:
LS	2011/04/08
APPROVED:	DATED:
	2011/04/08

DEPARTMENT:	Hardware RD.
COMPANY:	ITALCOM GROUP

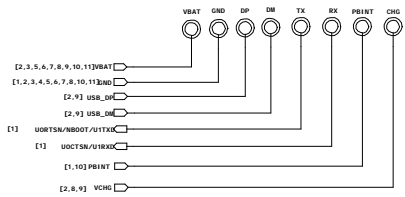
REVISION RECORD			
LTR	ECO NO.	APPROVED:	DATE:

VI BRATOR



5PIN_I/O CONNECTOR

Boot select:
 UORTSN/NBOOT/U1TXD = low --> boot from USB
 UORTSN/NBOOT/U1TXD = high --> boot from NOR on UART used by the two USB



TEST POINT

HOLE and MARK POINT

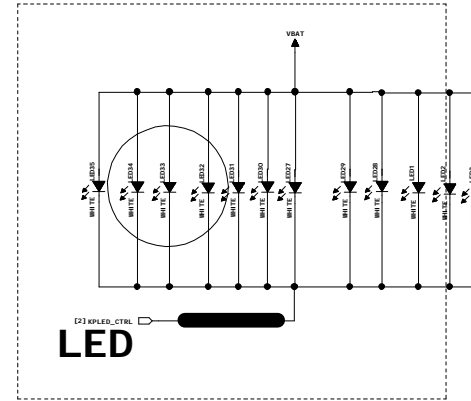
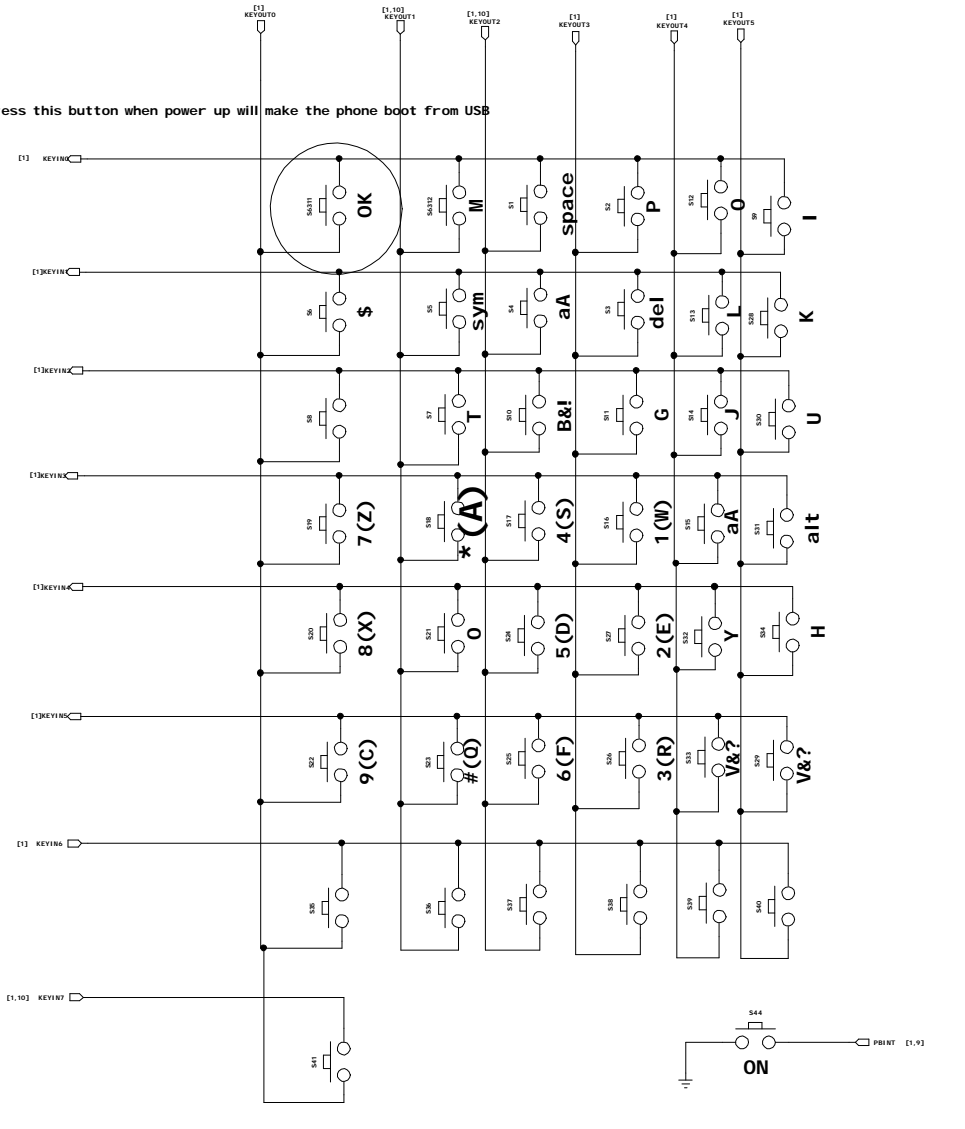


TITLE & REV:	CG237_MAINBOARD_V1.0_SCH
DOCUMENT NO.:	HW-SC6610-SCH-2011-0001

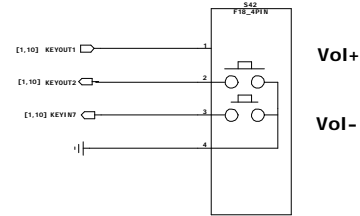
DESIGNER:	LLB	DATED:	2011/04/08	DEPARTMENT:	Hardware RD.
EOA:	LS	DATED:	2011/04/08	COMPANY:	ITALCOM GROUP
APPROVED:		DATED:	2011/04/08		

REVISION RECORD			
LTR	ECO NO.	APPROVED:	DATE:

Press this button when power up will make the phone boot from USB



LED



KEYPAD

TITLE & REV: CG237_MAI NBOARD_V1.0_SCH		
DOCUMENT NO.: HW-SC6610-SCH-2011-0001		
DESIGNER: LLB	DATED: 2011/04/08	DEPARTMENT: Hardware RD.
EOA: LS	DATED: 2011/04/08	COMPANY: ITALCOM GROUP
APPROVED:	DATED: 2011/04/08	

