

**B1**

# **User Manual**

## Table of Contents

<b>Safety Information</b> .....	<b>3</b>
<b>Appearance and Introduction Key Operations</b> .....	<b>4</b>
<b>Switch your Mobile Phone ON/OFF</b> .....	<b>5</b>
<b>Install/Remove the SIM Card and Battery</b> .....	<b>5</b>
<b>Install/Remove the Memory Card</b> .....	<b>6</b>
<b>Charge the Battery</b> .....	<b>7</b>
<b>Storage</b> .....	<b>7</b>
<b>Call Functions</b> .....	<b>8</b>
<b>Contacts</b> .....	<b>9</b>
<b>Messages</b> .....	<b>11</b>
<b>Internet Browser</b> .....	<b>12</b>
<b>Camera</b> .....	<b>13</b>
<b>Photos</b> .....	<b>14</b>
<b>Google Play Music</b> .....	<b>15</b>
<b>Sound Recorder</b> .....	<b>16</b>
<b>Alarm Clock</b> .....	<b>17</b>
<b>Calculator</b> .....	<b>17</b>
<b>Google Calendar</b> .....	<b>18</b>
<b>FM Radio</b> .....	<b>19</b>
<b>Gmail</b> .....	<b>19</b>
<b>Google Play</b> .....	<b>20</b>
<b>Settings</b> .....	<b>21</b>
<b>Applications for TELCEL</b> .....	<b>26</b>
<b>Notices for the use of phone</b> .....	<b>27</b>

## Safety Information

Please carefully read the items below:

Do not use the phone in situations where it might cause danger.



### Transportation Safety

Please observe all transportation laws and regulations.

Please drive with both hands on the wheel.



### Hospitals

Please follow limitations.

Please turn off your mobile phone when near medical instruments.



### Airports

Remember to follow all airport and flight safety regulations.

Please do not use your phone during flight.



### Toxic Chemicals

Do not use your mobile phone around fuels or chemicals.



### Accessories and Batteries

Use only Blu authorized batteries and accessories.



### Making Repairs

Never take your phone apart. Please leave that to the professionals. Unauthorised repairs could break the terms of your warranty.



### Water

Your phone is not waterproof. Keep it away from water and liquids.



### SOS Emergency Calls

Make sure your mobile phone is switched on and in a service area. In home screen, tap the phone key and dial 911 and send.

## Appearance and Introduction Key Operations

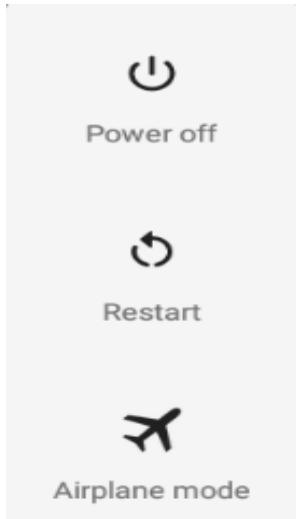


Keys	Functions
Home	Press this button to return home from any application or interface.
	Long press it to open Google™ search.
Menu	Press it to open recently opened application window.
Back	Press it to return to the previous interface, or to close dialog box /options' menu/notification panel or the keypad.
Power	Press it to open the phone's menu, then you could choose to lock the screen, turn off the phone, or set it to the silent mode.
Up	Press it to increase the volume Press it to turn the phone to vibration mode from the silent mode.
Down	Press it to decrease the volume.

## Switch your Mobile Phone ON/OFF

To switch your mobile phone ON, press and hold the Power Key until an animation appears on the screen. Make sure the battery is charged and inserted properly.

To switch OFF, press and hold the Power Key until a window pops up.

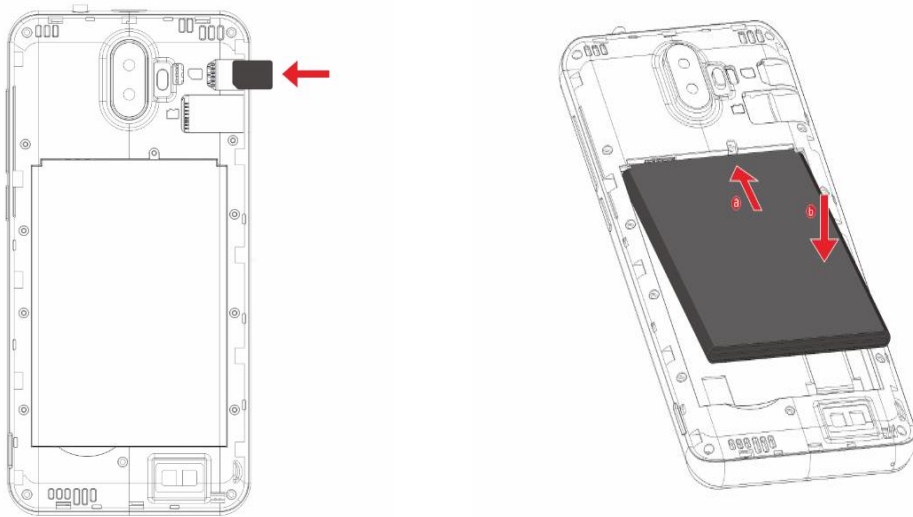


## Install/Remove the SIM Card and Battery

Make sure to switch off the device and disconnect from charger before installing and removing the SIM card and battery. To install/remove the SIM card and battery, perform the following:

1. Turn the mobile phone OFF.
2. Snap open the phone's back cover and pull out the battery.
3. Carefully insert the SIM card into the SIM card slot, making sure that the card's gold plate is facing down and in proper alignment with the phone's metal contacts.
4. Carefully return the battery into its slot and put the cover back on.

*Notice: If the screen displays that the SIM card is locked permanently, please consult your network operator.*

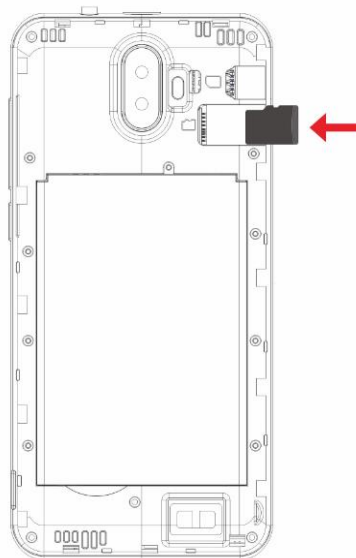


## Install/Remove the Memory Card

The Memory Card is a handy mobile storage device that expands the mobile phone's storage capacity.

To install/remove the memory card, perform the following:

1. Turn the mobile phone OFF.
2. Snap open the phone's back cover.
3. Carefully insert the Memory Card into the slot, making sure that the card's gold plate is facing down and in proper alignment with the phone's metal contacts.
4. To remove, carefully pull the card out of the slot.



## Charge the Battery

- Plug the charger into the electrical outlet.
- Connect the small end of the charger connector into the mobile phone's charging slot.

The battery indicator icon will flash until charging is finished. When charging is complete, i.e. the battery charging icon stops flashing, disconnect the phone from the charger.

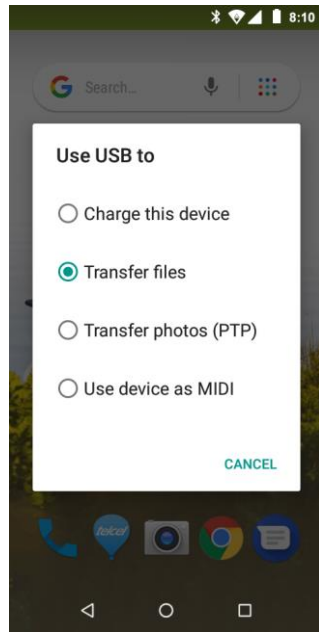
### Notice:

- a. Do not forget to unplug the charger from the electrical outlet after charging.
- b. Only use approved charger and other accessories.
- c. You can use the phone while charging, but charging time may increase. When charging the handset in its Power Off state, a charging indicator will appear on the screen.



## Storage

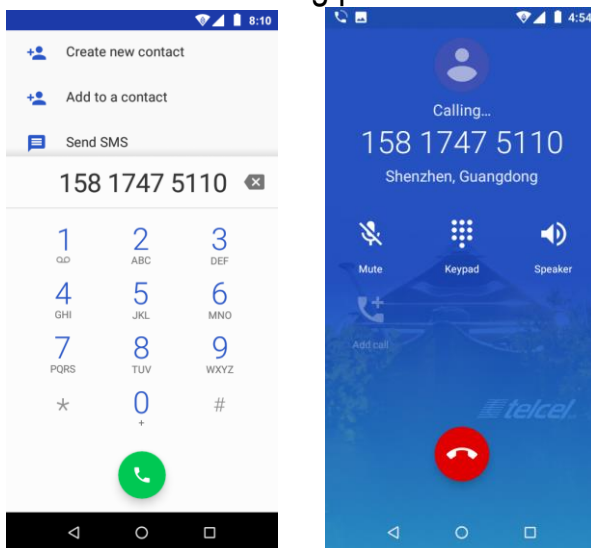
Connect the phone with the USB cable provided. Once connected, a connection interface will appear. In the connection mode interface, select MTP and turn on from the connection screen to be able to transfer files. Other storage options are also available.



## Call Functions

### Make calls

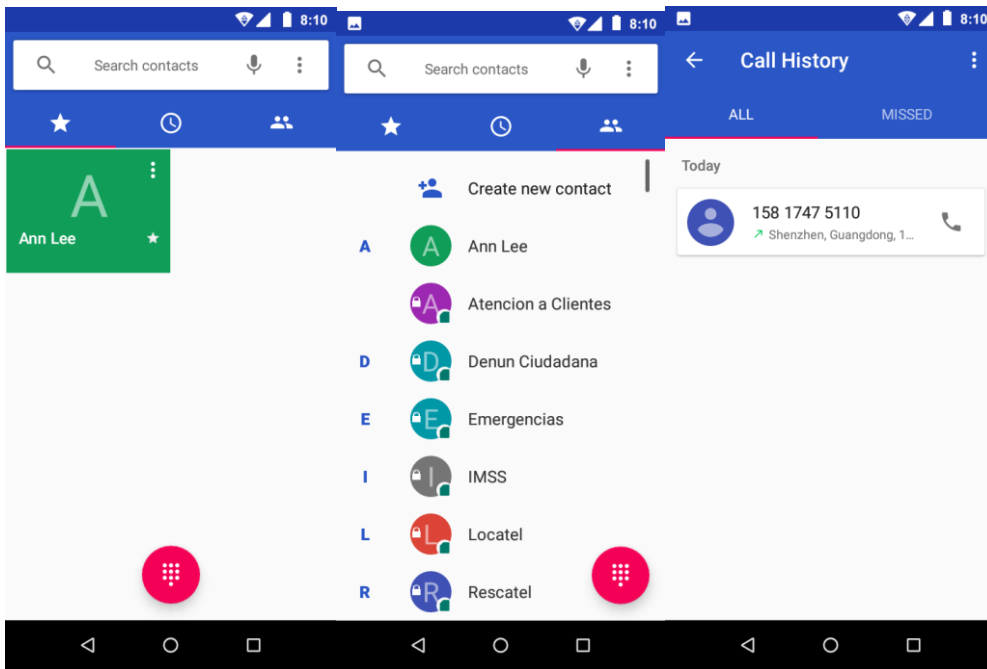
At the dial keyboard, input the phone number and then click the dial key. If dialing an extension, you may click the dial pad icon in the bottom of the screen to open the interface and enter the number of the extension. You may also press and hold the 0 key to add a (+) sign when adding an international dialing prefix.



### History

Every telephone number called and received will be saved in the history. All numbers in the history can be dialed directly by clicking the CALL BACK on the screen. When the number appears on the list, click it to view details.



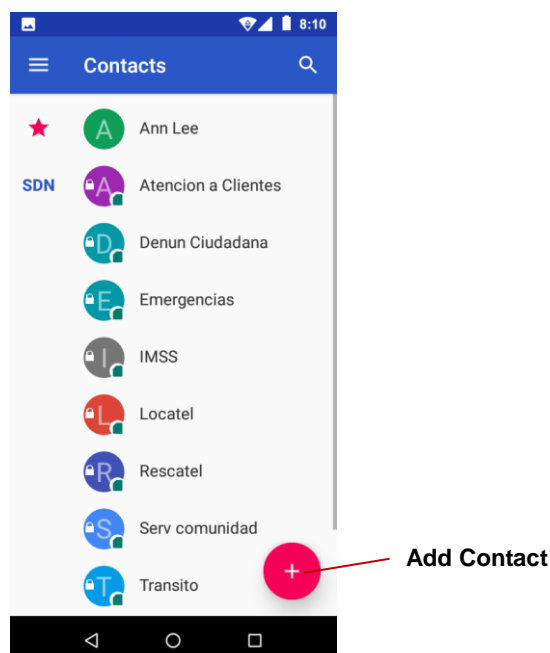


## Call Options

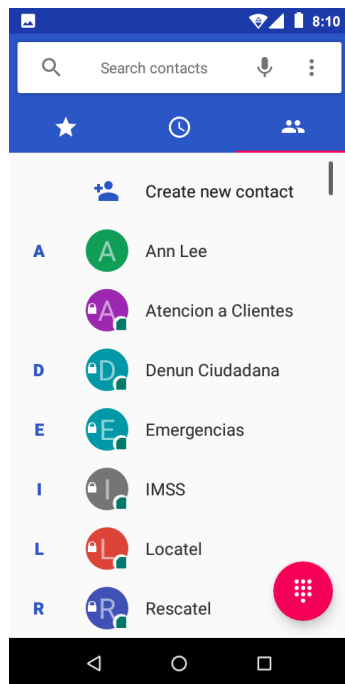
There are different options that can be used in the history and dialing interface. You may press the MORE while in the dial interface and adjust speed dial and call settings. In the dialing interface, you may press the search button to browse through contacts list or set default contact resources.

## Contacts

**Enter:** Click on the applications menu and select contacts.



- The default display is the phone contacts and SIM card contacts.
- The contacts are organized alphabetically by default.

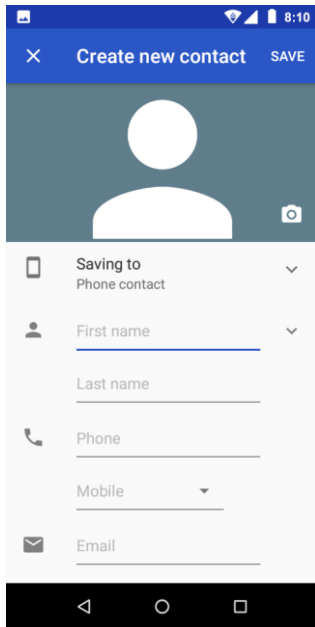


Click the Search icon to enter the contact search interface.

- Any numbers or letters associated with any of the contacts
- Saved in the list will be shown in the search results.

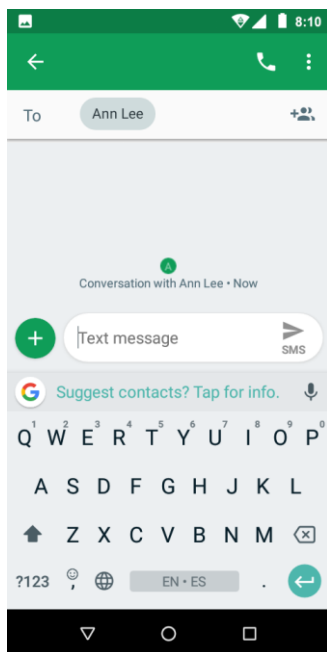
## **Add New Contact**

1. Click the add contact icon (+) to add contact.
2. Select to save your contacts to the Google account, the phone or the SIM card.
3. You may enter different contact details which include adding a picture, name, telephone number, group, address, and email among other options.
4. Click to finish and save contact.



## Messages

You may use this function to exchange text messages and multimedia messages with your family and friends. The messages from the same contact or phone number will be saved into a single conversation so you may see the entire message history conveniently.



## Send an SMS

Application Menu » Messaging » New message (or shortcut icon)

1. Click to enter recipient (You may enter contacts from contact book or enter a new number)
2. Compose Message

### 3. Send

#### Send an MMS

When creating message, the default message style is SMS. The message will automatically convert to MMS when adding an attachment.

1. Click the attachment icon in the messaging interface.
2. Click to add attachments and create an MMS message.

### **Internet Browser**

#### Menu Functions

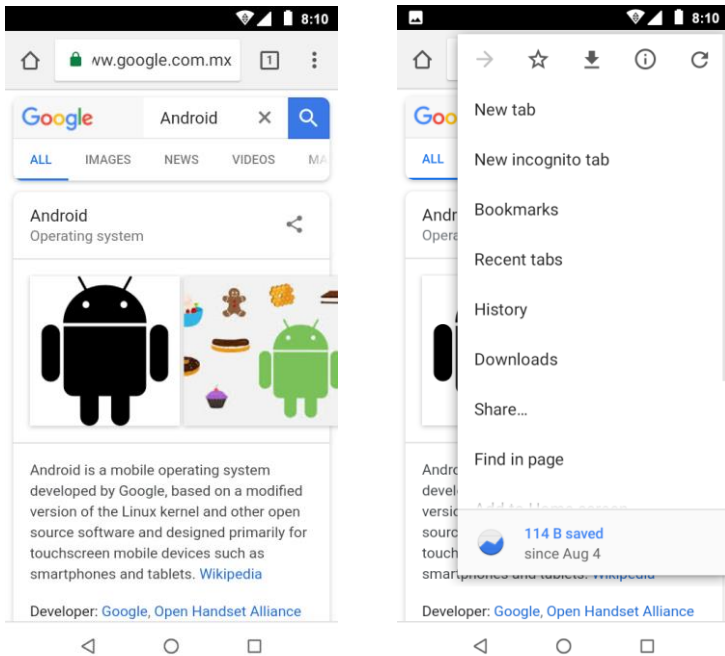
- Recent tab
- After browsing through multiple pages, this option will return the user to the previous page.

#### Windows

- You may view all windows open by clicking the windows icon in the upper right part of the browser.

#### Bookmarks

- Click the save to Bookmarks option to make the current URL as a saved Bookmark.
- Click Bookmarks/History to opened saved bookmarks.
- Find on page: Search current page.
- Share page: Select to share the current page.
- Bookmarks/History: Show your browsing history and view the most visited pages.
- Settings: Contains a variety of browser settings.



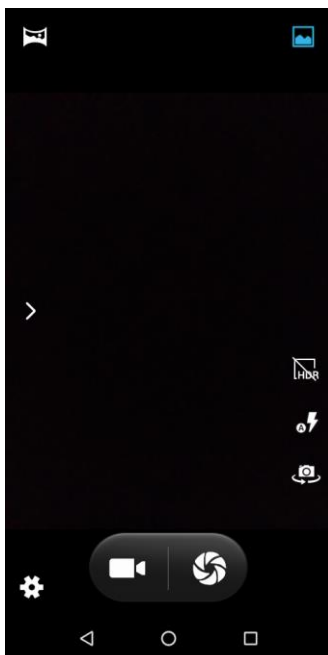
## Camera

### Camera

**Prior to use:** Insert SD card before using the camera or video camera. All photos or videos taken by the phone are typically stored in the memory card for large storage capacity of images.

### Open Camera

1. Applications Menu » Camera
2. Switch to video mode if you want to record videos.



**Note:** You may place a camera shortcut icon on any of the screens

## Take Pictures

1. Aim the object that the picture will be taken.
2. Press the “Shutter” button on the screen.
3. After taking the picture, the file will be saved in the camera’s gallery folder.
4. You can view the photos by clicking the preview box button. You may adjust various settings for the camera by pressing Menu while in the camera interface. When in the camera viewfinder mode, you can switch to video or photos’ gallery.

## Photos

### Open Images

Applications Menu » Photos

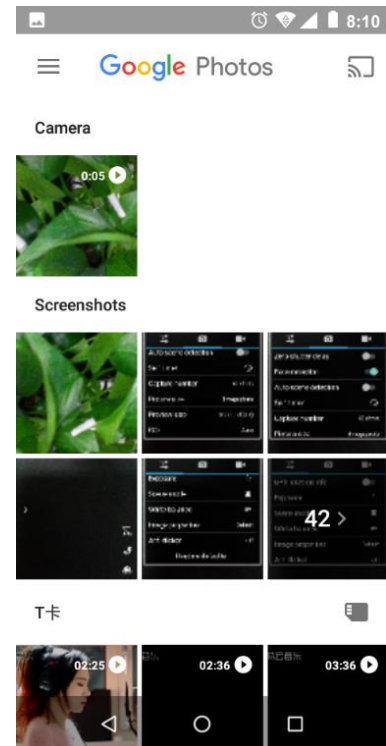
### Share Pictures

You may share pictures by sending them through different types of installed applications. You may also send pictures through the MMS message function by composing a message and attaching the picture. Any image can also be sent via the Bluetooth function by selecting Bluetooth equipment that has been paired.

### Adjust Image

Press Menu and Edit to adjust images.

You may select from different effects that may include: Auto, West, Palma, Metro, Eiffel, Blush, Modena, Reel, Vogue, Ollie, Bazaar, Alpaca, Vista, among other settings that can be used to adjust picture images.



## View Images

In the picture interface, click on an album to view images

In the photo album, scroll the picture towards left to view the next picture or towards right to view the previous one.

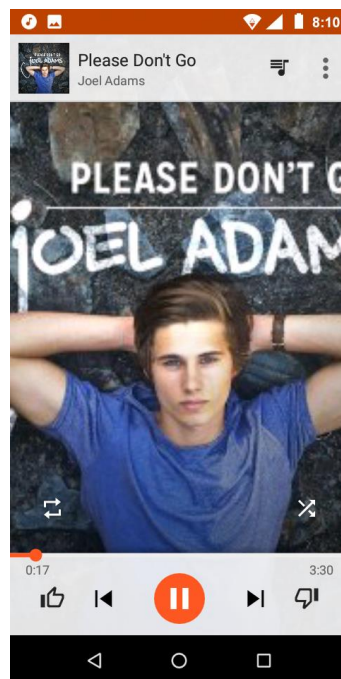
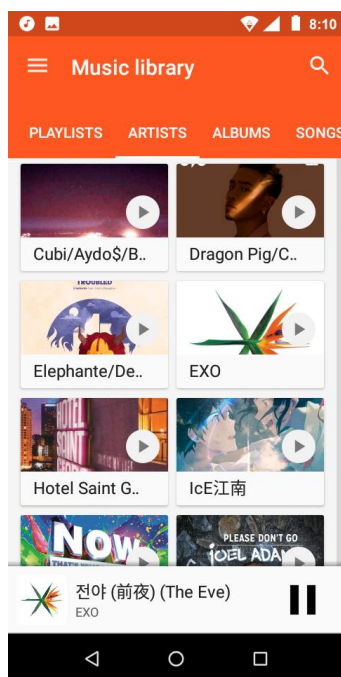
## Crop Pictures

If you want to adjust the size of the picture, use the crop tools. Once the arrow appears, pinch your fingers in or out to adjust the size. If you want to adjust the image and keep its proportion, please hold down any of the four corners of the image and adjust accordingly.

## Google Play Music

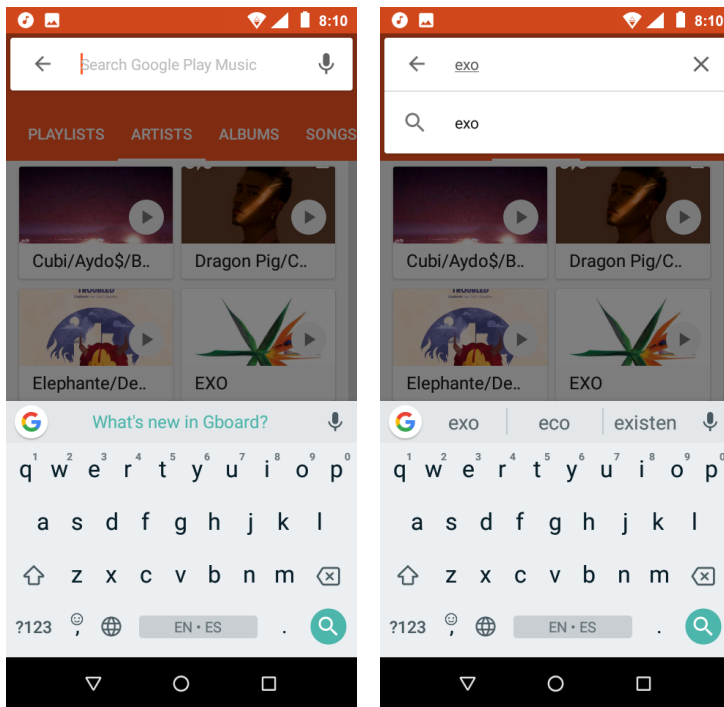
### Open Music

Application Menu » Music



## Search Music

You may choose to search for music from media folder through artist name, song name, album name. **The following formats are available:** AMR, MIDI, MP3, WAV, and OGG.

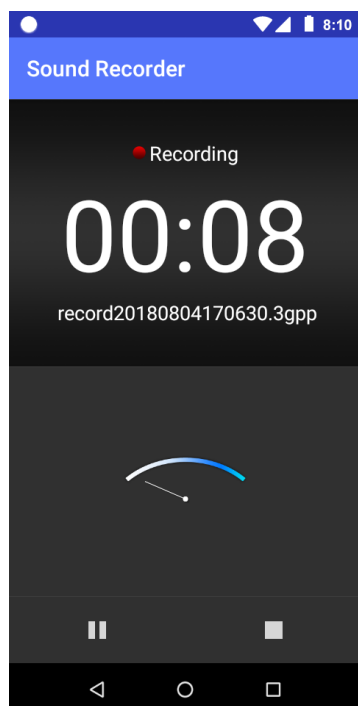


## Sound Recorder

The Sound Recorder can record voice or any audio.

You may send any recorded audio via Bluetooth or MMS and also have the option to make any recorded audio the phones default ring tone.

The recorder uses 3GPP and OGG format.





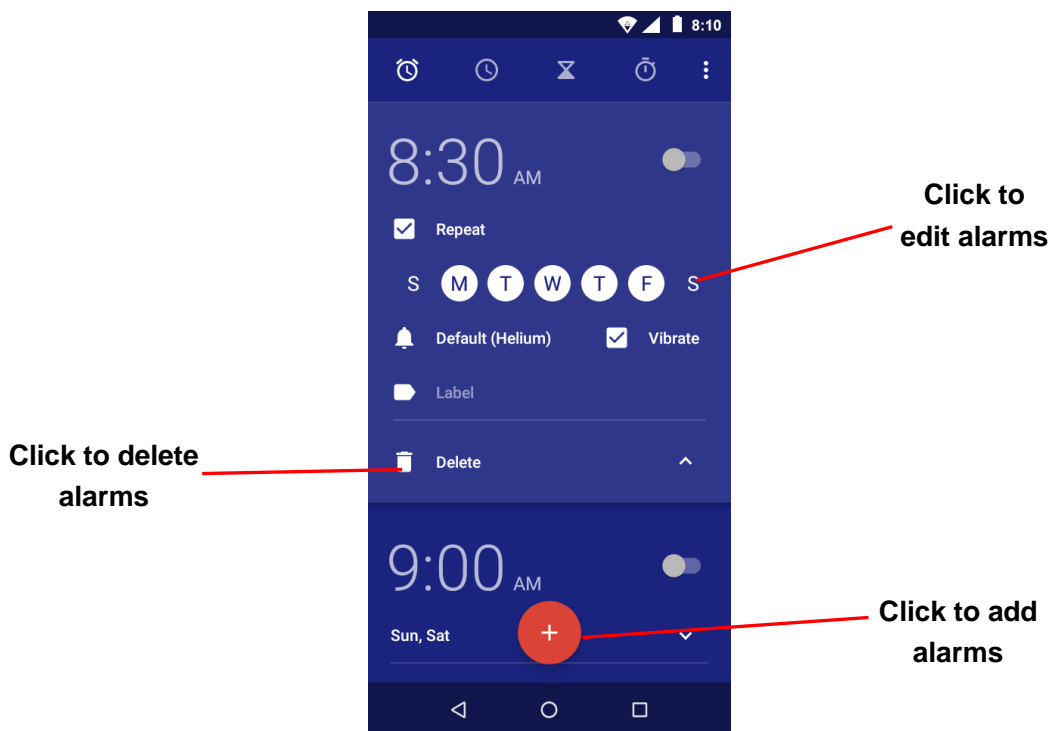
## Record

- Keep the phone's microphone near the voice source.
- Click the record button to record the audio.
- Click the stop button to stop recording the audio.

All recordings will be saved in the recording folder in the default music program and can be accessed from the sound recorder application.

## **Alarm Clock**

1. Click on the Clock icon in the application menu
2. Click set alarm button and enter the alarm clock set interface where you may delete and edit alarms

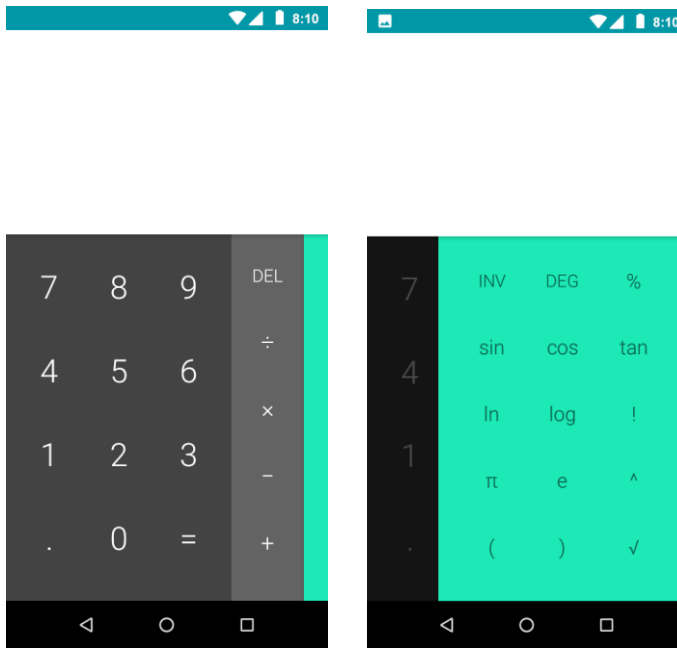


## **Calculator**

This function can turn your phone into calculator, it can do some simple calculations.

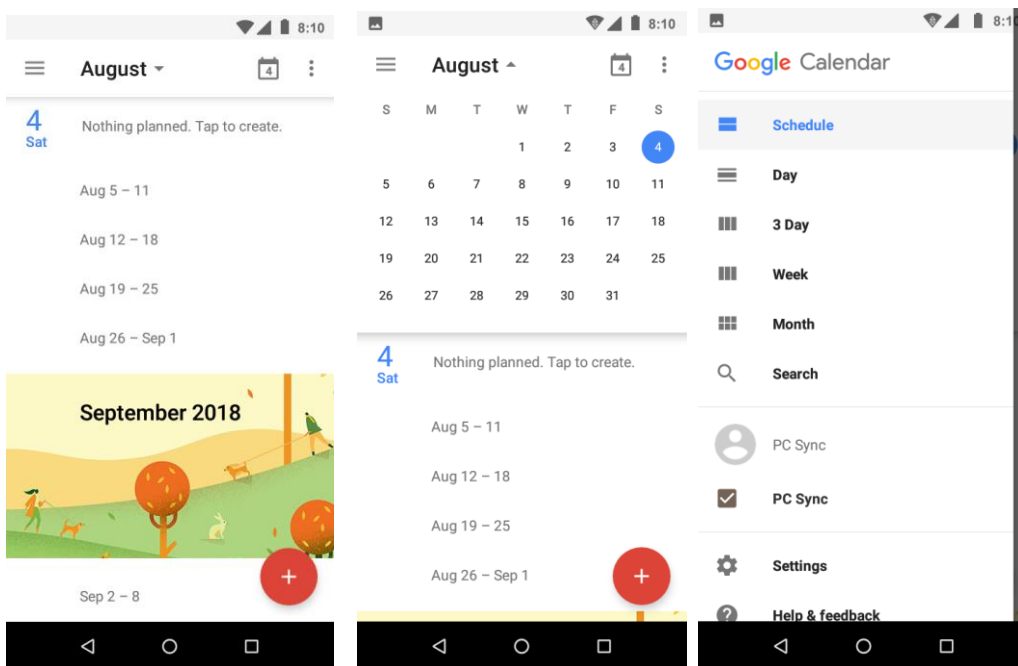
Touch the number keys to make it appear in the blank box.

In the interface of calculator, press MENU button or hold down the screen to the left, then the senior panel appears.



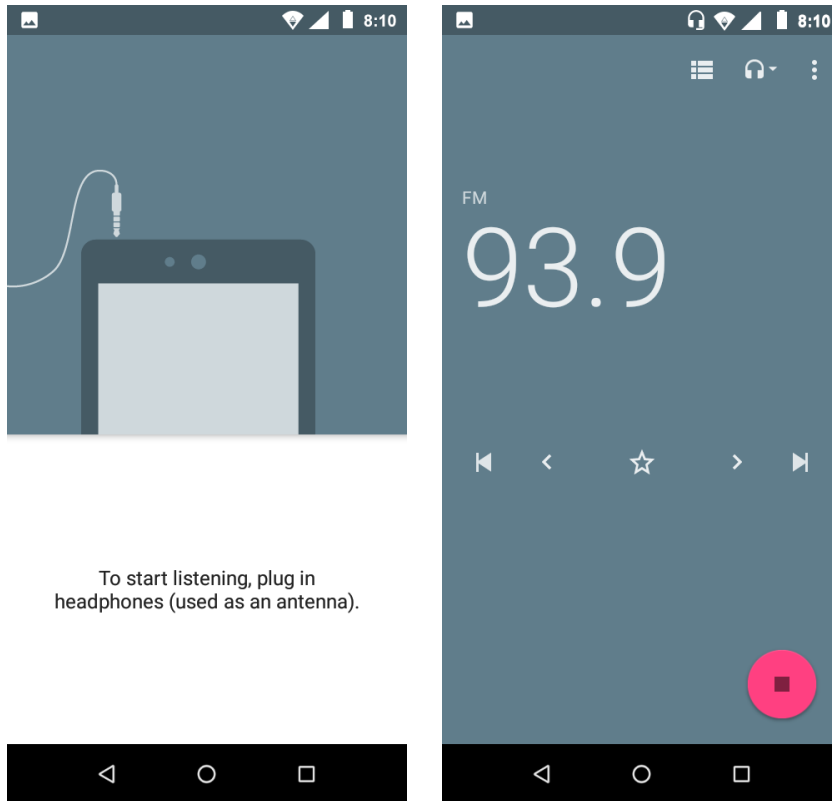
## Google Calendar

Enter the calendar program, use white color on the surface of the month or perimeter to highlight on the same day, the default to display this week.



## FM Radio

Through this program, you may listen to FM radio on the device, FM radio use the wired headset as an antenna to receive signals, before opening this program



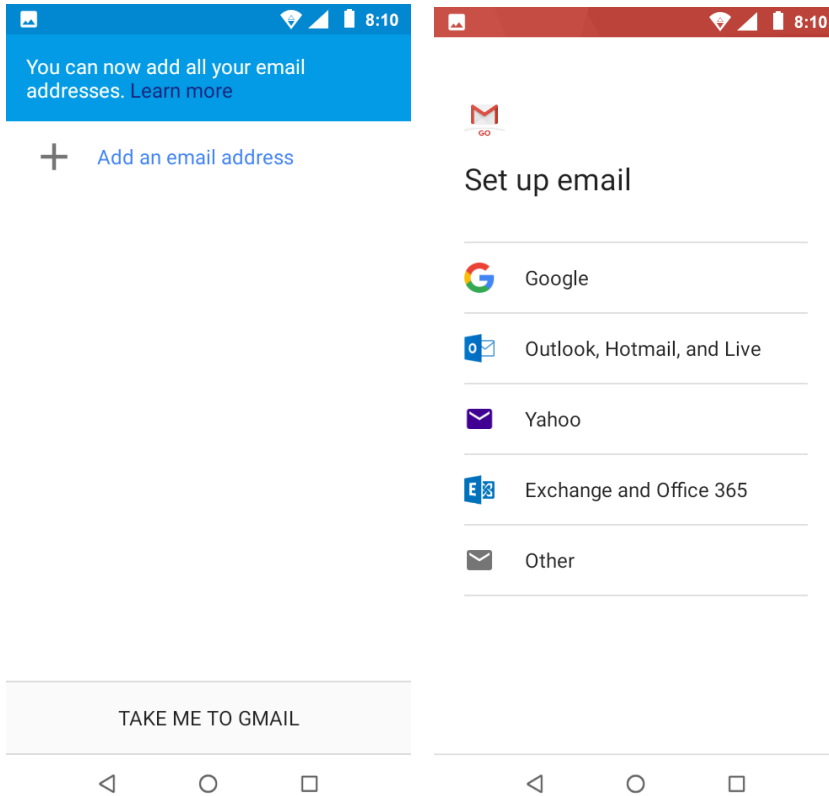
## Gmail

Allows you set up your Gmail accounts. Gmail on your phone is automatically synchronized with your google account on the web.

Open Gmail, you can activate or edit existing e-mail accounts as well as create a new e-mail account.

When loading a mail account, if you want to delete it, you need to restore factory settings. When loading a second one, you could press the menu button to delete it.

Notices: many functions depend on Gmail Account, fox example: Play store, Chrome, Contact, Calendar, etc



## Google Play

Google Play allows you to download music, movies, and even games. Click the Play icon to sign in with your Google account.



Search and select  
between different Play  
Store categories

## Settings

### Network & Internet

- **Wi-Fi:** Wi-Fi to power on. When on, the Wi-Fi will automatically search for available networks. Any unsecured network can be used directly and any secured network requires a password or credentials prior to connection.
- **Mobile network:** Press the switch to enable/disable data roaming and VoLTE option. Select preferred network type, view the Access Point Names and Network operators.
- **Data usage:** View the mobile data usage
- **Hotspot & tethering:** Use hotspot and tethering to provide Internet to other devices through your mobile data connection. Apps can also create a hotspot to share content with nearby devices.
- **VPN:** Add VPNs, and need to set a lock screen PIN or password before you can use credential storage.
- **Airplane Mode:** Press the switch to turn on/off flight mode.

*Note: When in flight mode, all network connections will turn off automatically.*

### Connected devices

- **Bluetooth:** Press the switch to power on Bluetooth. Once on, the Bluetooth will automatically scan for any nearby open equipment.
- **Cast:** Cast photos & videos to other devices
- **Printing:** Need to download the "CloudPrint.apk" from the Internet and install.
- **USB:** Can select storage option when connected with PC

### Apps & notifications

- See the all app informations, include installed apps and system apps

- Manage and delete installed applications.
- Press the 'Force Stop' button to stop any of the services listed

## **Battery**

- General power usage and power management

***Note:** battery usage data is approximate and can change based on usage*

## **Display**

- Brightness level, Adaptive brightness, Wallpaper, Sleep, Auto-rotate screen,Font size, Display size,Font style

## **Sound**

- This option can set the Media/Alarm/Ring volume, phone ringtone, default notification sound, default alarm sound,other sounds and vibrations, also vibrate for calls

## **Storage**

- View the phone memory usage.

## **DuraSpeed**

- Press the switch to power on DuraSpeed to allow APPs running in background,some notifications may be postponed or not received
- DureSpeed does not restrict background activities of APPs switched on in the list

## **Security & location**

### **Security status**

- Google Play Protect regularly checks your apps and device for harmful behavior
- Find My Device helps you locate this device remotely. It also helps you keep your data safe, if the device is lost.

- Security update: Check Android™ version and security patch level

## **Set up screen locks**

- Use Swipe, Pattern, PIN or password to lock the screen.
- Pattern: The first time there will be simple unlock instructions and examples. Click “next step” to continue the security pattern step.
- PIN: Enter PIN number to unlock the screen.
- Password: Use password to unlock the screen

*You may stop the security feature at any time.*

## **Set up SIM card PIN lock**

- SIM card PIN (Personal Identification Number) is used to prevent unauthorized use of SIM card. To change a blocked PIN code, you will need to unlock the SIM lock then go to the Change Password screen. The phone will automatically prompt you enter the old PIN code and ask to enter a new PIN code twice. The phone will then prompt you that the change was successful. If you enter the PIN incorrectly three times, the SIM and PIN codes will be automatically locked. You will need the PUK code to unlock the phone which is available through your service provider. If you enter the PUK code incorrectly 10 times, the SIM card will be permanently locked. Please see your service provider for a new SIM card.
- Show passwords: Display characters briefly as you type.
- Encryption & credentials: Allow applications to visit security credentials or other credentials.
- Screen pinning: When this setting is turned on, you can use screen pinning to keep the current screen in view until you unpin. To use screen pinning:

1. Make sure screen pinning is turned on.
  2. Open the screen you want to pin.
  3. Tap Overview
  4. Swipe up and then tap the pin icon.
- Location: Use wireless services to find locations in applications. When using the GPS, power on to set satellite positioning for accuracy.
  - Apps with usage access: Allows an app to track what other apps you're using and how often, as well as your carrier language settings, and other details.

## **Users & accounts**

- Add account: Add accounts for owner, include Exchange, Google, IMAP, Personal (POP3)
- Emergency information: Adding medical information and emergency contacts can help first responders in an emergency.
- Automatically sync data: Let apps refresh data automatically

## **Accessibility**

- Power button ends call and auto-rotate screen
- Speak Passwords and large text

## **Google**

- View all kinds of google services & preferences

## **System**

### **Language & Input**

- Language: Change the language of the phone.
- Personal dictionary: Add or delete words to the custom dictionary.



- Keyboard & inputs: Virtual keyboard,Physical keyboard
- Input assistance: Spell checker, Autofill service,Personal dictionary,Pointer speed,Text-to-speech output



## **Gestures**

- Jump to camera: To quickly open camera, press the power button twice. Works from any screen.



## **Date & Time**

- Automatic date & time: Use network-provided time, Use GPS-provided time,off
- Automatic time zone: Select use network-provided time zone
- Date and Time adjustment: Set date and time what you want.
- Select time zone: Select Time Zone according to where your location.
- Select Date Format : There are 2 kinds of formats you can choose from: 12-hour & 24-hour format.



## **Backup**

- Back up to Google Drive: Will back up all application data, WLAN passwords, and other settings to Google Drive server,and this device's backup data in Google Drive will be permanently deleted if you select TURN OFF & DELETE option.
- Account: Add backup account



## **Reset options**

- DRM rest: Deletes all DRM licenses
- Reset Wi-Fi, mobile & Bluetooth: This will reset all network settings, including: Wi-Fi, Mobile data and Bluetooth

- Reset app preferences: This will reset all preferences for: Disabled apps, Disabled app notifications, Default applications for actions, Background data restrictions for apps and Any permission restrictions.
- Erase all data(factory reset): This will erase all data from your phone's internal storage, including: Your Google account, System and app data and settings, Downloaded apps, Music, Photos and Other user data.

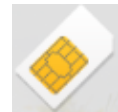
## About phone

- Phone information status and firmware updates

## Applications for TELCEL

### SIM Telcel

You can access the SIM Telcel tool kit via this menu.



### Telcel

Telcel apps is a container that collects famous telcel services.You can access any telcel services via this apps.



### Mi Telcel

You can access the Mi Telcel service via this menu.



### Claro música

You can access the TELCEL music service via this menu.



### Claro drive

You can access the Claro drive service via this application



**Some system settings, hardware, and UI options may vary depending on final version.**

## Notices for the use of phone

Your phone is a product of superior design and craftsmanship and should be treated with care.

The following suggestions can help you comply with the terms of repair kits, to extend the life of mobile phone.

- 1) Place the mobile phone and their parts and components out of reach of small children.
- 2) Keep the phone dry, rain, humidity and all types of liquids which contain minerals will corrode electronic circuits.
- 3) Don't touch the phone with wet hands when charging, it will cause electric shock or damage the phone.
- 4) Avoid place the device in high temperature environment. Temperatures will shorten the life of electronic devices, damage batteries, and warp or melt certain plastics.
- 5) Avoid place the device in too low temperature environment. When the temperature rises, the phone will produce water vapor that may damage electronic circuit.
- 6) Avoid place the phone in dusty, dirty places, otherwise parts may be damaged.
- 7) To avoid the phone in a lit cigarette, near open flame or any heat source.
- 8) Do not open the device, non-professional approach will do damage to the phone.
- 9) Do not throw it from height, knock or shake the phone, rough handling can damage internal circuit boards.
- 10) Do not paint the phone, because the paint will block headphones, microphones or other removable parts, and lead it not work.
- 11) Use clean, soft, dry cloth to clean the camera, light sensor lenses. Prohibit the use of harmful chemicals and cleaning agents, cleaning fluids to clean the phone
- 12) If mobile phone, battery, charger, or mobile phone accessories are defective, send to the nearest qualified service center for inspection.

13) If necessary, Service Centre staff will assist you and will arrange for phone repairs.

Google, Android, Google Play and other marks are trademarks of Google LLC.

The Android robot is reproduced or modified from work created and shared by Google and used according to terms described in the Creative Commons 3.0 Attribution License.

The UNII band 1 is indoor use only.

## FCC Statement

### 15.19 Labeling requirements.

This device complies with part 15 of the FCC Rules. Operation is subject to the following two conditions: (1) This device may not cause harmful interference, and (2) this device must accept any interference received, including interference that may cause undesired operation.

### 15.21 Information to user.

Any Changes or modifications not expressly approved by the party responsible for compliance could void the user's authority to operate the equipment.

### 15.105 Information to user.

This equipment has been tested and found to comply with the limits for a Class B digital device, pursuant to Part 15 of the FCC Rules. These limits are designed to provide reasonable protection against harmful interference in a residential installation. This equipment generates uses and can radiate radio frequency energy and, if not installed and used in accordance with the instructions, may cause harmful interference to radio communications. However, there is no guarantee that interference will not occur in a particular installation. If this equipment does cause harmful interference to radio or television reception, which can be determined by turning the equipment off and on, the user is encouraged to try to correct the interference by one or more of the following measures:

- Reorient or relocate the receiving antenna.
- Increase the separation between the equipment and receiver.
- Connect the equipment into an outlet on a circuit different from that to which the receiver is connected.
- Consult the dealer or an experienced radio/TV technician for help.

### Specific Absorption Rate (SAR) information:

This product meets the government's requirements for exposure to radio waves. The guidelines are based on standards that were developed by independent scientific organizations through periodic and thorough evaluation of scientific studies. The standards include a substantial safety margin designed to assure the safety of all persons regardless of age or health.

FCC RF Exposure Information and Statement The SAR limit of USA (FCC) is 1.6 W/kg averaged over one gram of tissue. This device was tested for typical body-worn operations with the back of the handset kept 10mm from the body. To maintain compliance with FCC RF exposure requirements, use accessories that maintain a 10mm separation distance between the user's body and the back of the handset. The use of belt clips, holsters and similar accessories should not contain metallic components in its assembly. The use of accessories that do not satisfy these requirements may not comply with FCC RF exposure requirements, and should be avoided.

### Body-worn Operation

This device was tested for typical body-worn operations. To comply with RF exposure requirements, a minimum separation distance of 10mm for body worn must be maintained between the user's body, including the antenna. Third-party belt-clips, holsters, and similar accessories used by this device should not contain any metallic components. Body-worn accessories that do not meet these requirements may not comply with RF exposure requirements and should be avoided. Use only the supplied or an approved antenna.