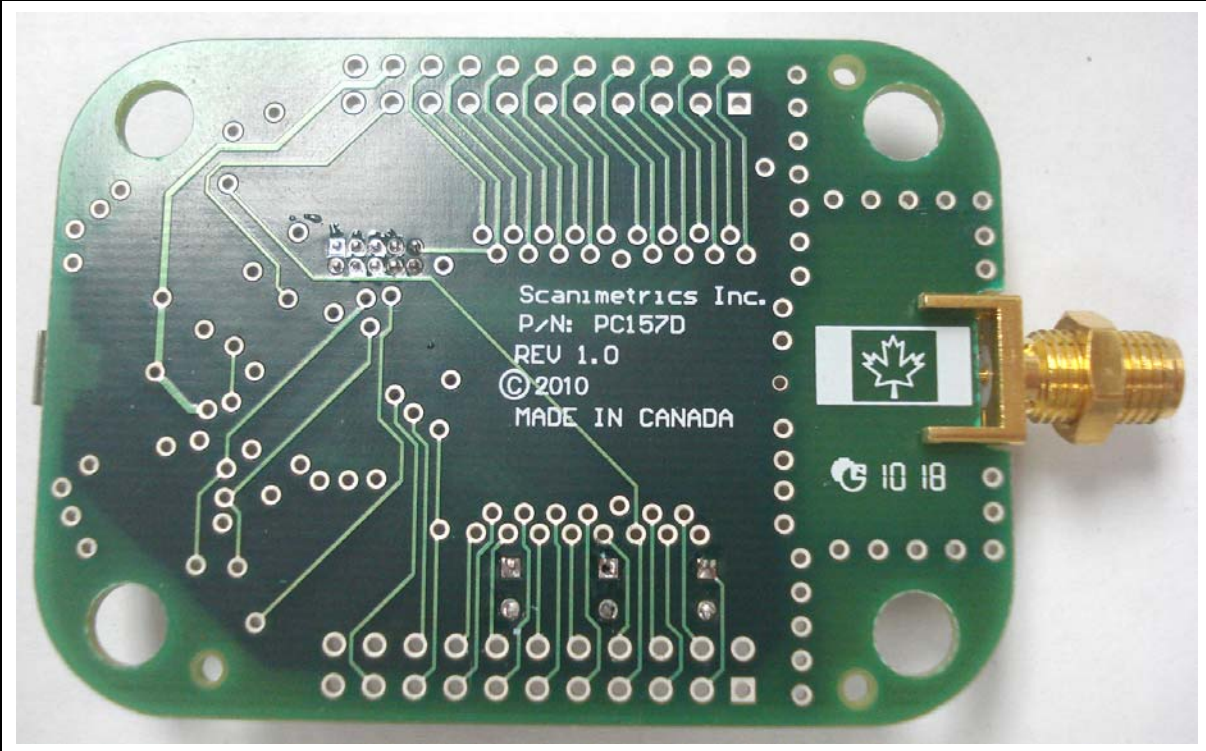



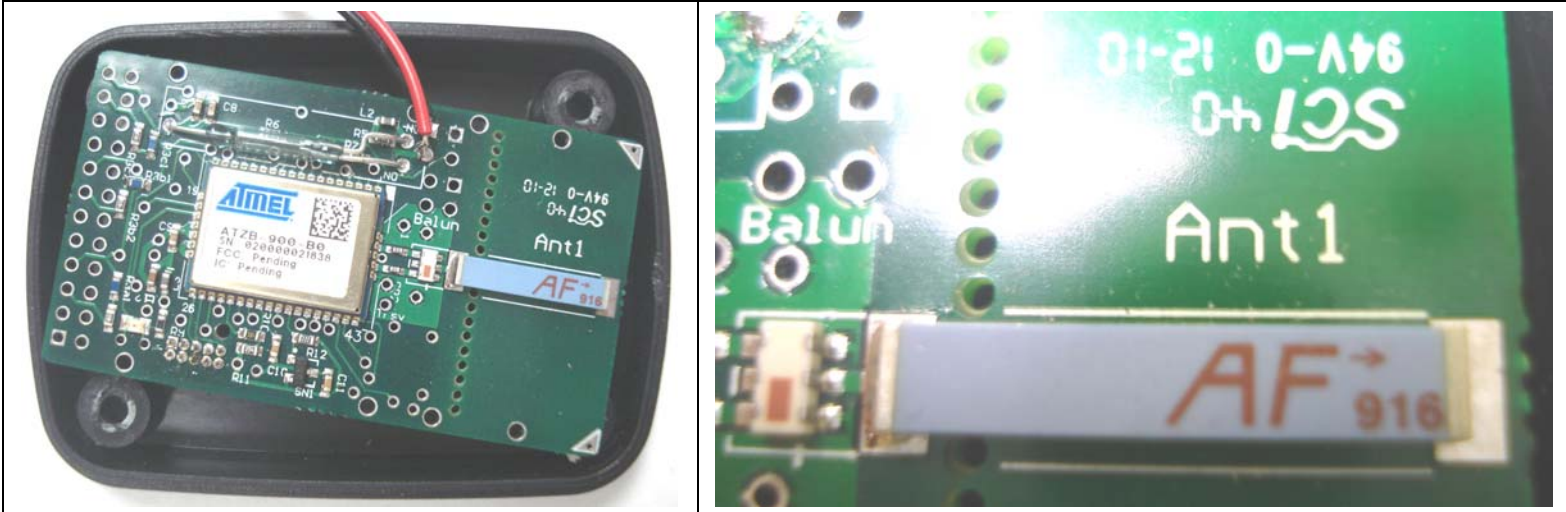
## INTERNAL DUT PHOTOGRAPHS



PCB (External Dipole Antenna and USB Configuration)

Applicant:	Scanmetrics, Inc.	Model:	WSP-900	FCC ID:	YPAMOTE9A	IC:	9085A-MOTE9A	
DUT Type:	MoteScan Wireless Strain Gauge Sensor System			Transmit Frequency Range:		906 - 924 MHz		


## INTERNAL DUT PHOTOGRAPHS



PCB (Internal Chip Antenna and Alkaline AA Battery Configuration)



DUT Test Configuration for Internal Chip Antenna - The manufacturer provided a modified test sample with the chip antenna soldered externally to an SMA connector (using the same PCB as the external dipole and USB configuration) due to the fact that the internal chip antenna could not be tested in the normal operating configuration (soldered on to the PCB). The chip antenna in the modified test configuration is electrically and mechanically identical to the chip antenna in the normal operating configuration (soldered on to the PCB) for the purpose of performing the tests.

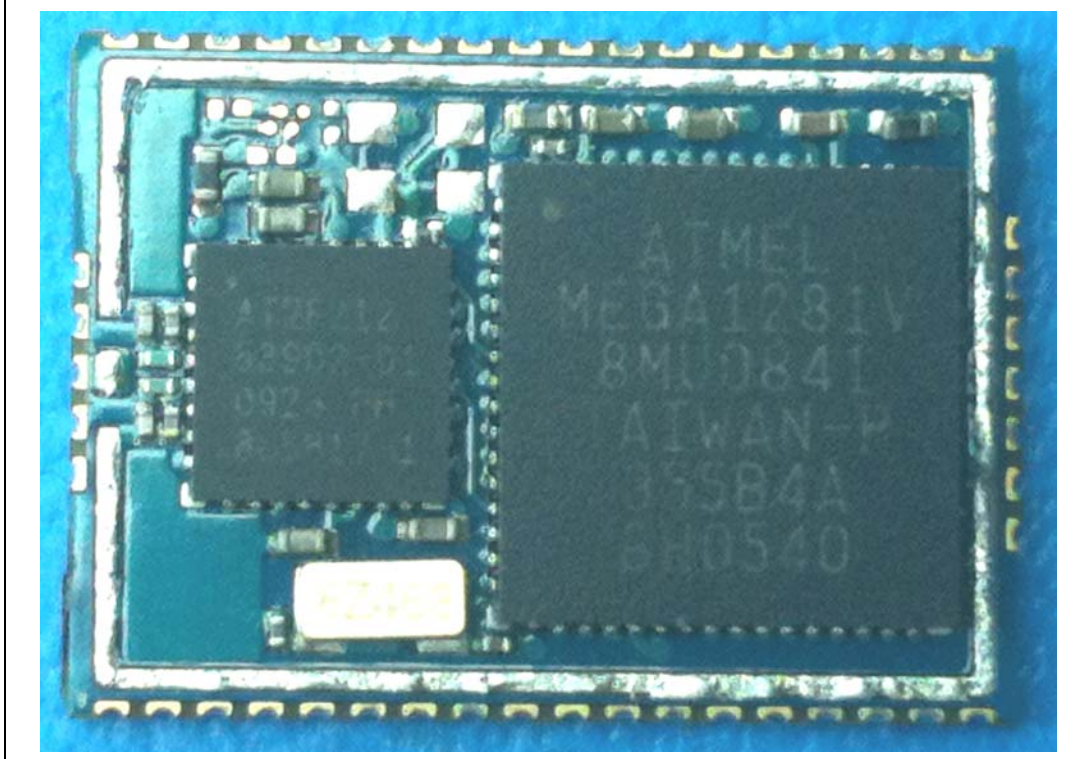
Applicant:	Scanimetrics, Inc.	Model:	WSP-900	FCC ID:	YPAMOTE9A	IC:	9085A-MOTE9A	
DUT Type:	MoteScan Wireless Strain Gauge Sensor System			Transmit Frequency Range:		906 - 924 MHz		




## INTERNAL DUT PHOTOGRAPHS



Transmitter with Shield Can



Transmitter with Shield Can Removed

Applicant:	Scanimetrics, Inc.	Model:	WSP-900	FCC ID:	YPAMOTE9A	IC:	9085A-MOTE9A	
DUT Type:	MoteScan Wireless Strain Gauge Sensor System			Transmit Frequency Range:		906 - 924 MHz		