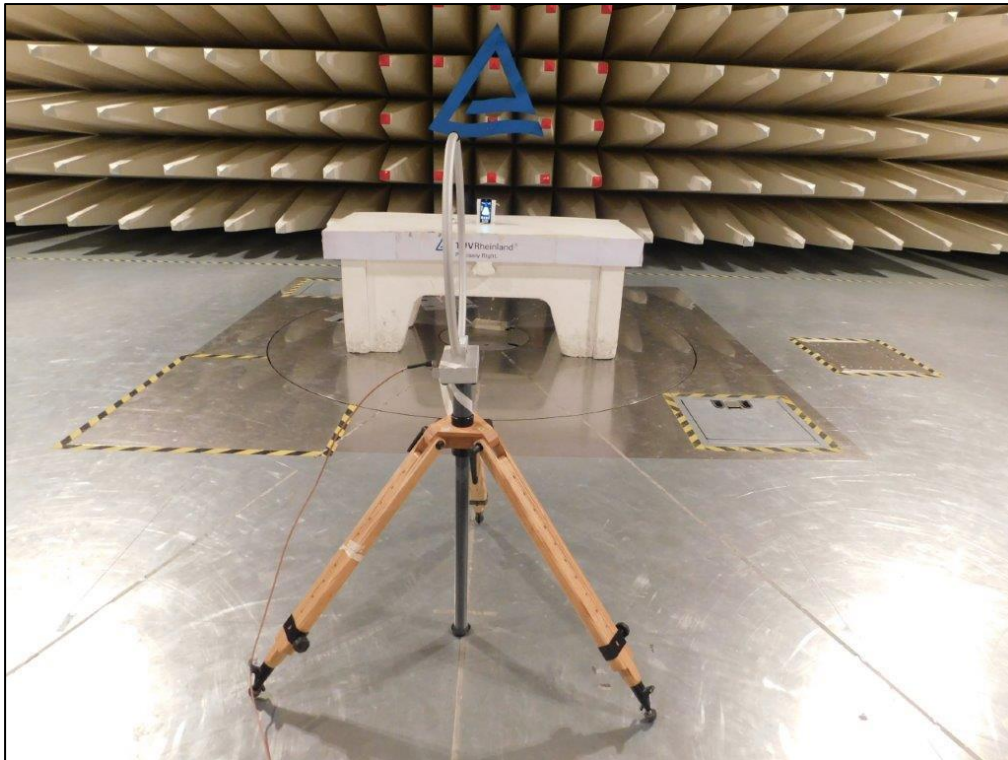
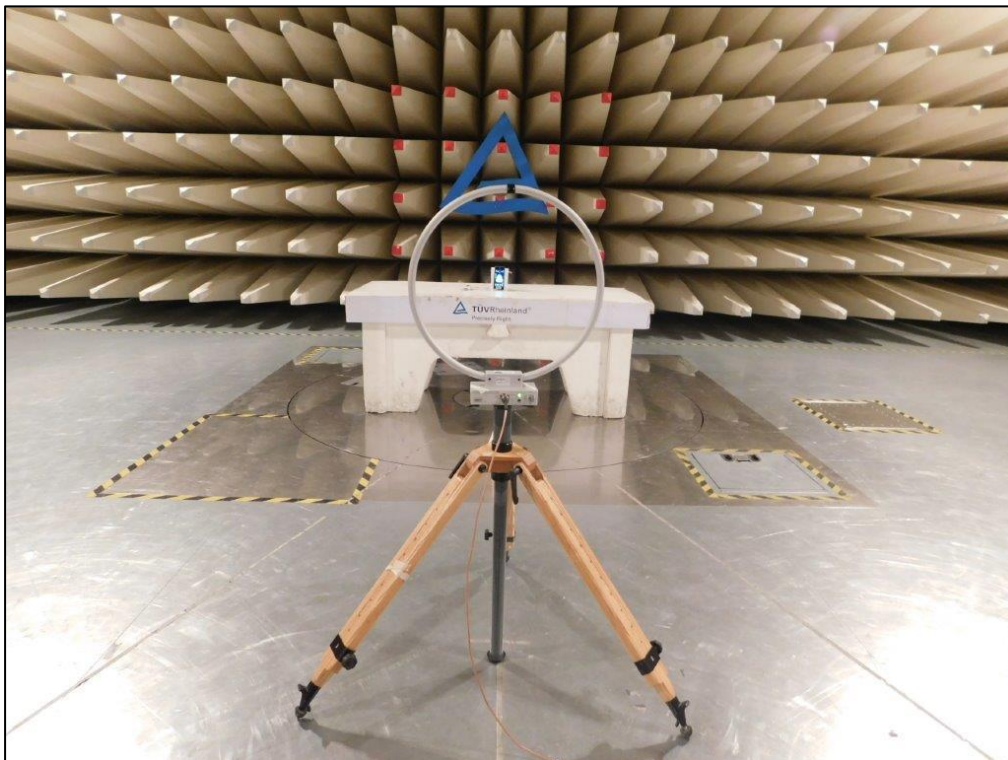


Test setup photos



Frequency range:9kHz-30MHz

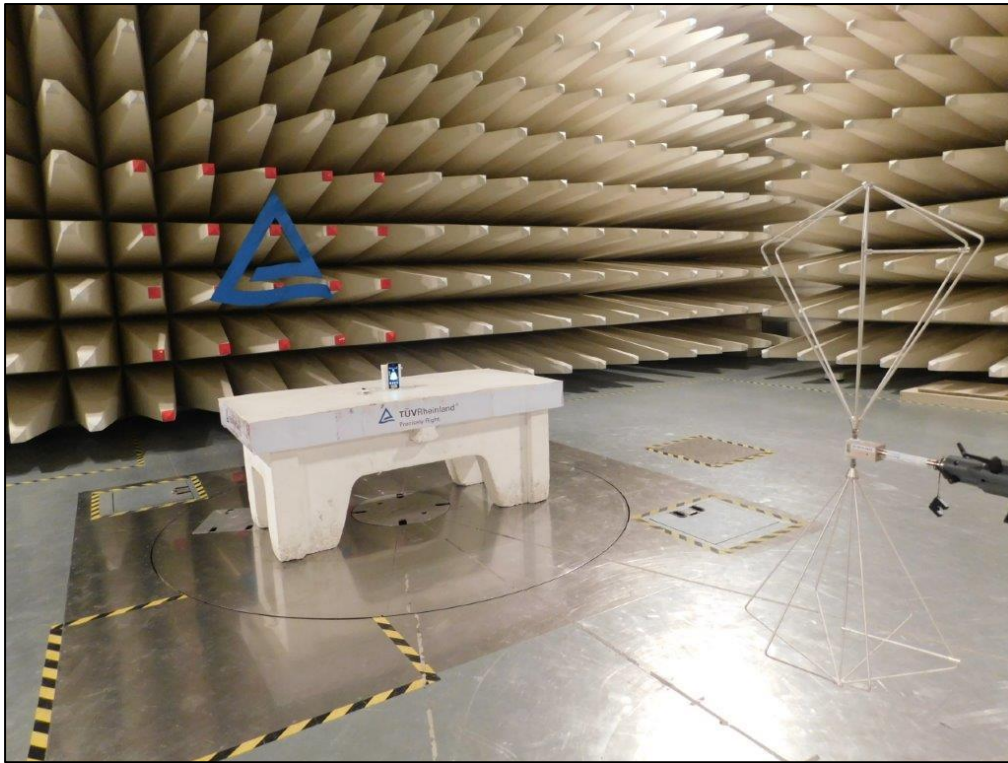
Polarization: Parallel



Frequency range:9kHz-30MHz

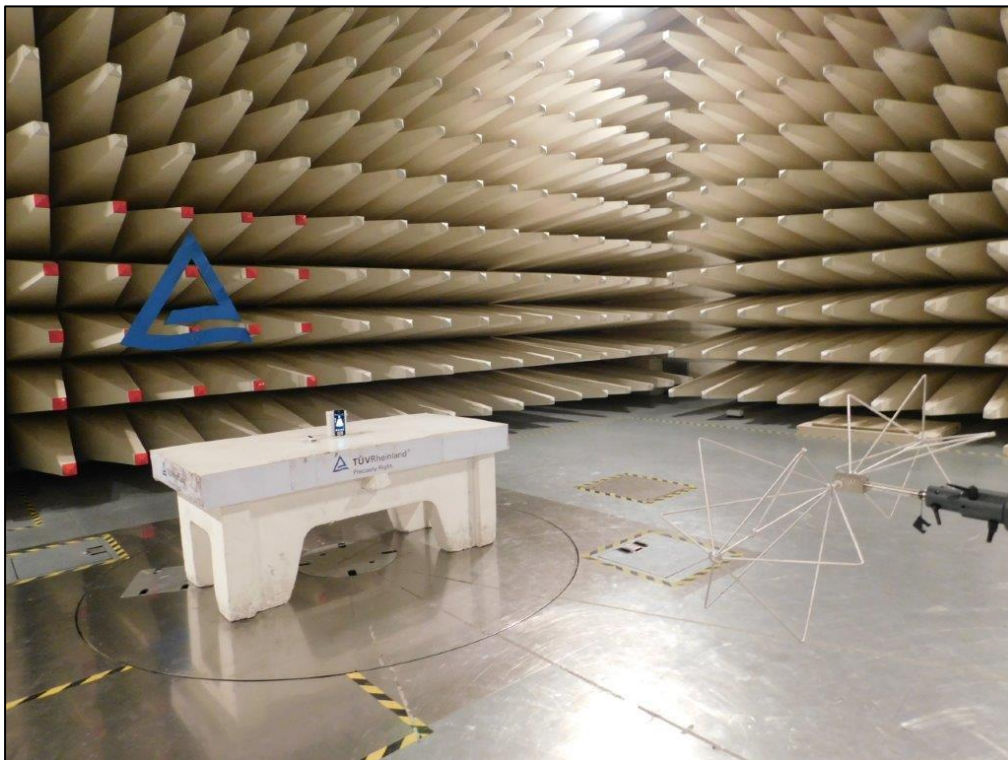
Polarization: Perpendicular

Mode Of Configuration: Battery Mode



Frequency range:30MHz-200MHz

Polarization: Vertical



Frequency range:30MHz-200MHz

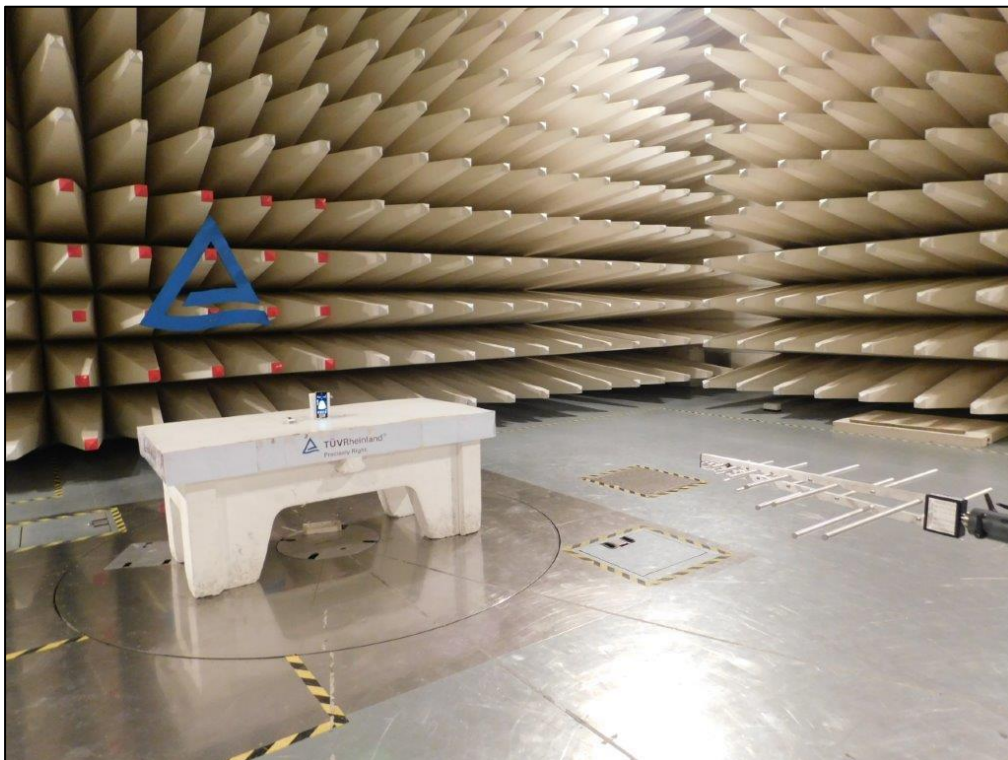
Polarization: Horizontal





Frequency range:200MHz-1GHz

Polarization: Vertical



Frequency range:200MHz-1GHz

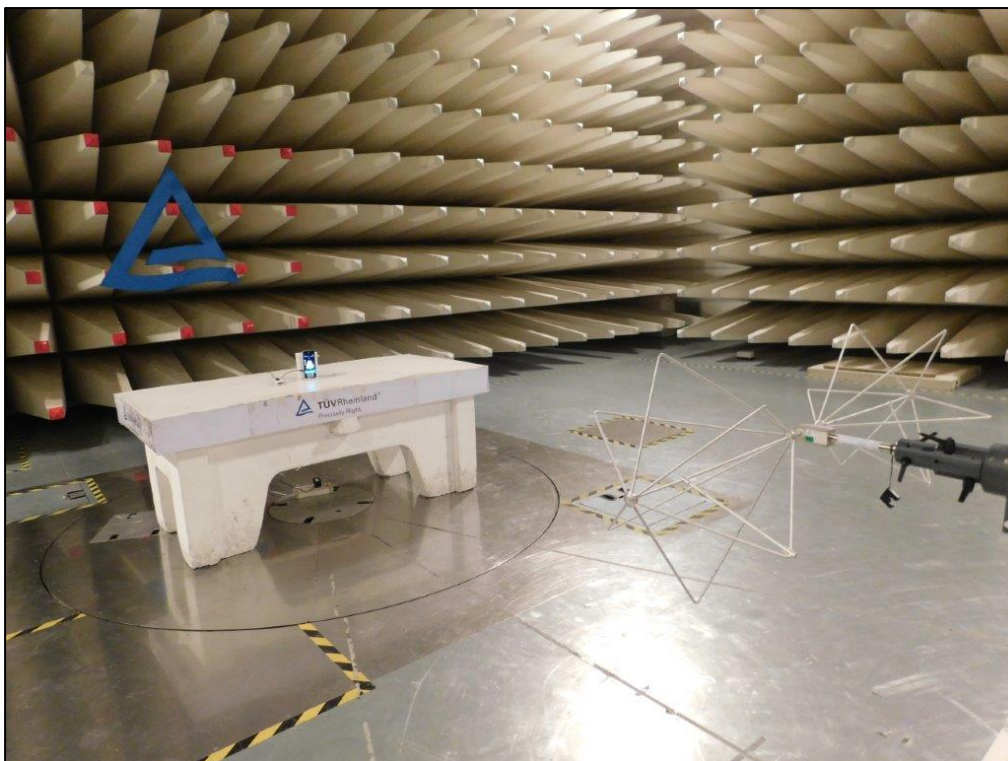
Polarization: Horizontal

Mode Of Configuration: Charging Mode



Frequency range:30MHz-200MHz

Polarization: Vertical



Frequency range:30MHz-200MHz

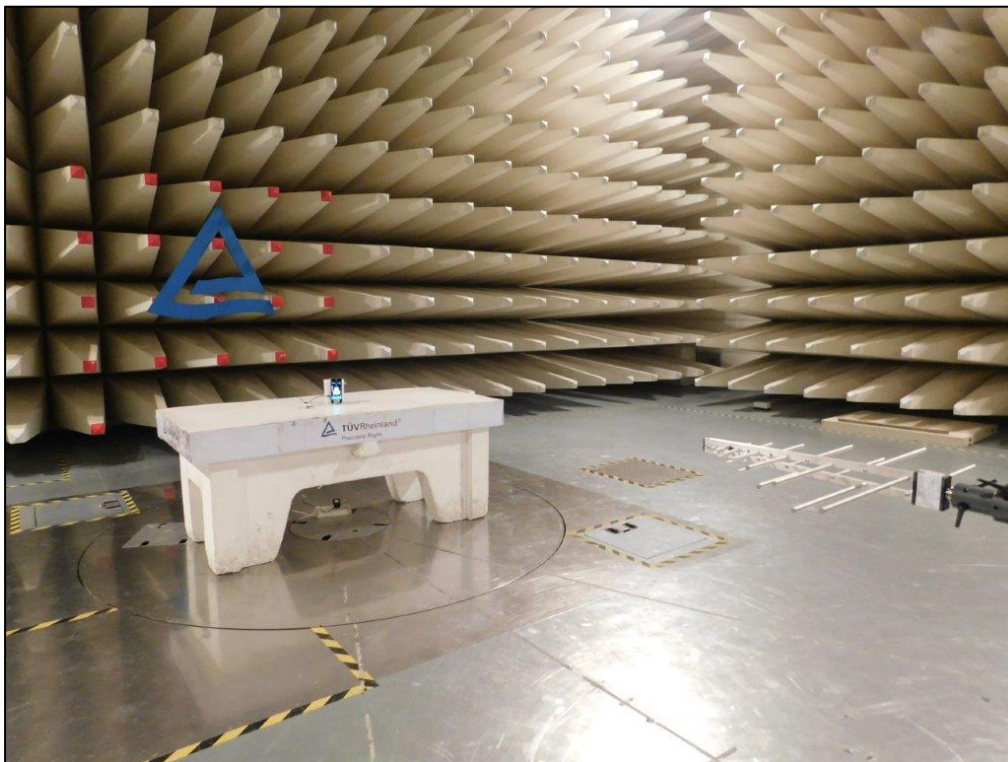
Polarization: Horizontal





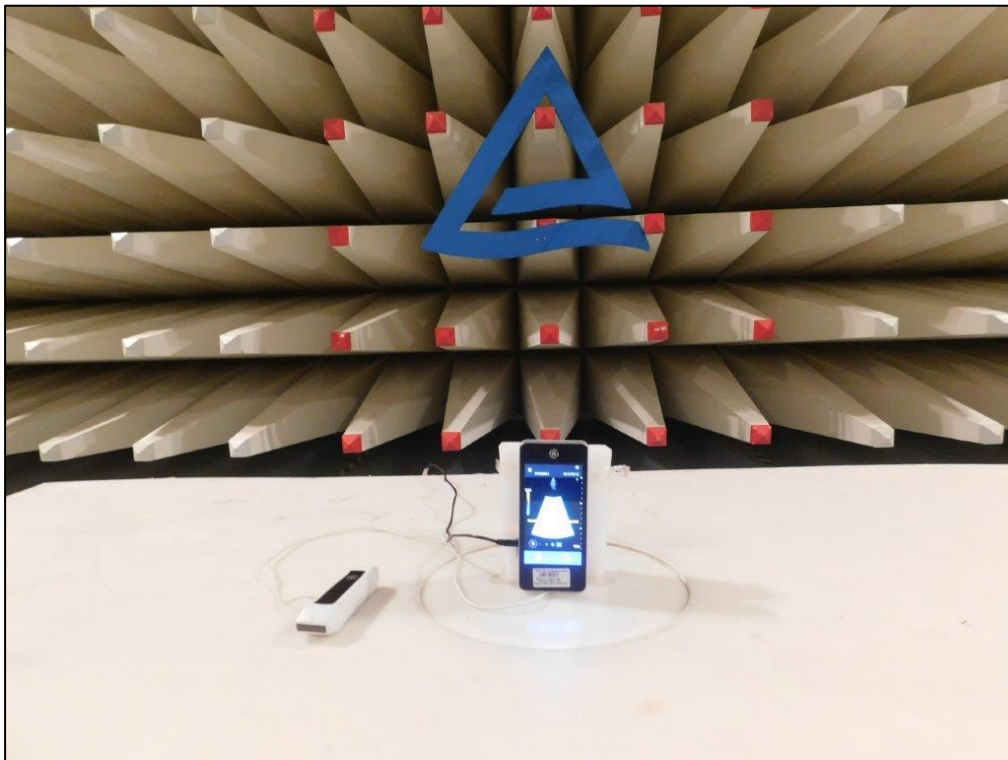
Frequency range:200MHz-1GHz

Polarization: Vertical

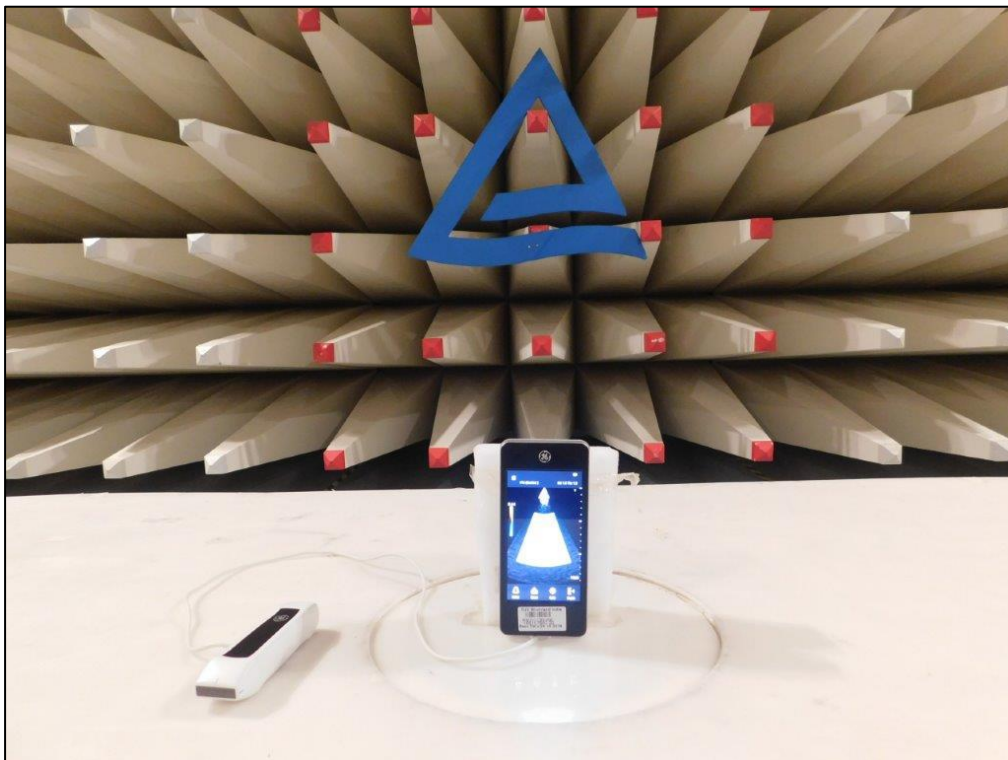


Frequency range:200MHz-1GHz

Polarization: Horizontal



EUT Close-up (Charging Mode)



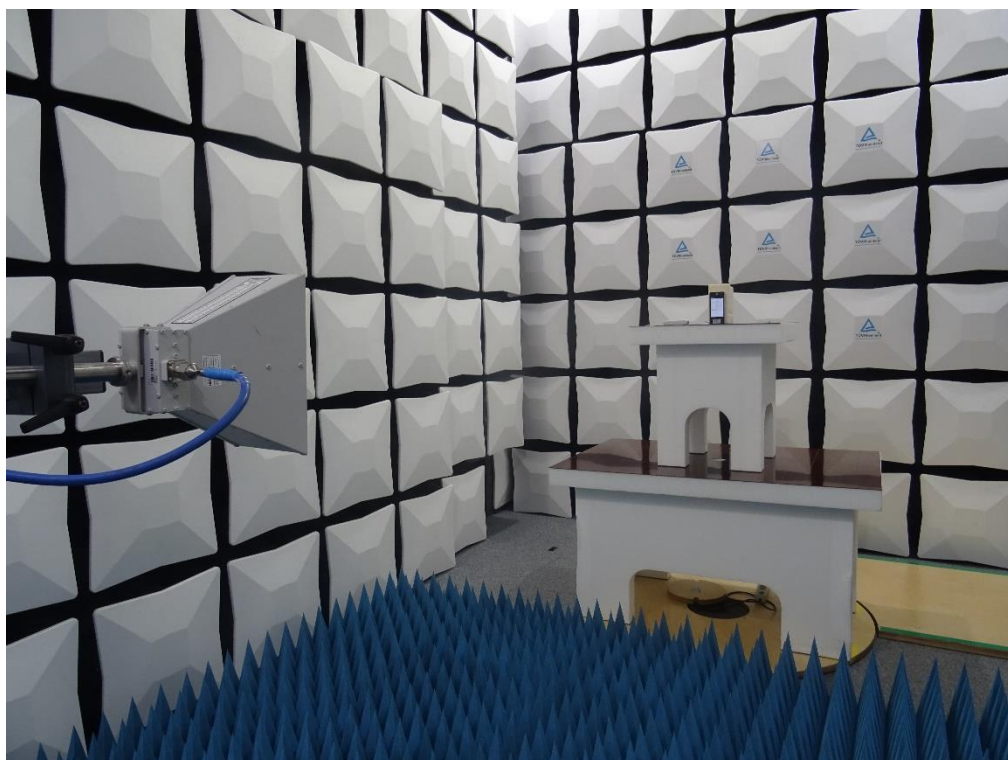
EUT Close-up (Battery Mode)





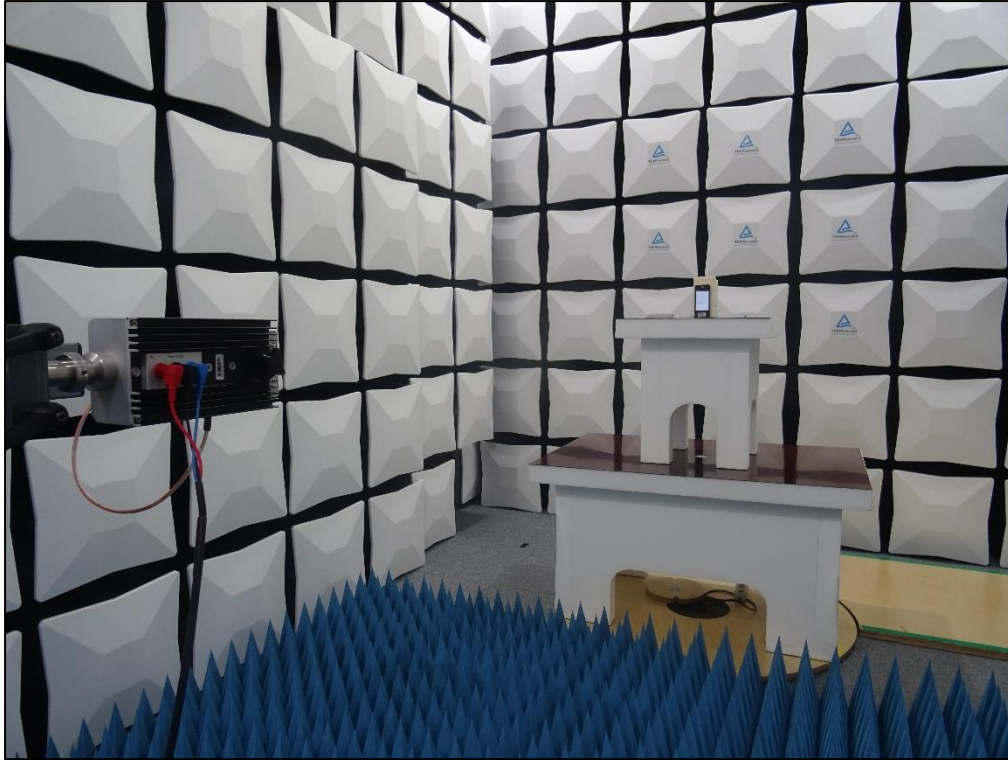
Frequency range:1GHz – 18GHz

Polarization: Vertical



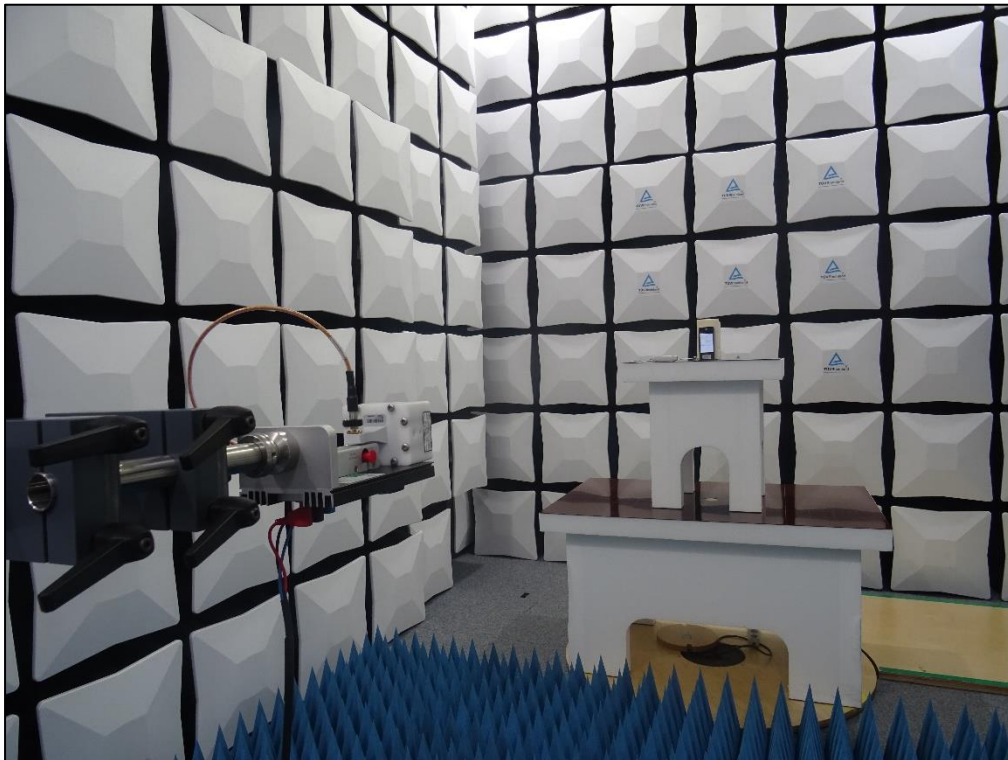
Frequency range:1GHz – 18GHz

Polarization: Horizontal



Frequency range:18GHz – 40GHz

Polarization: Vertical



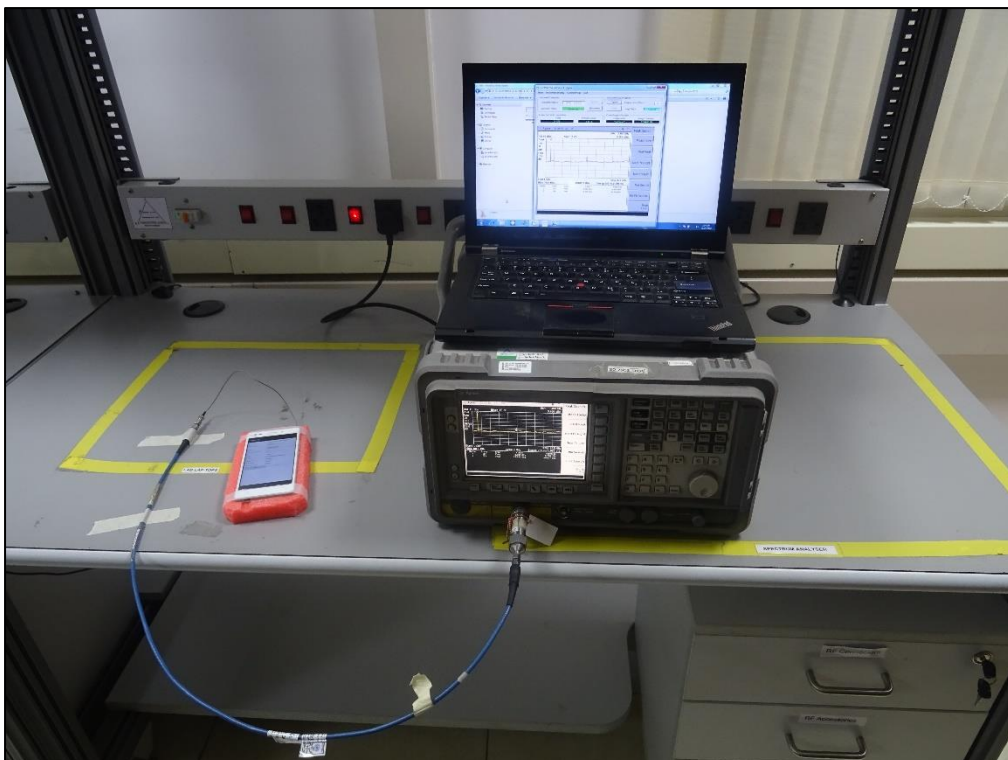
Frequency range:18GHz – 40GHz

Polarization: Horizontal





EUT Close-up



Conducted Test Setup