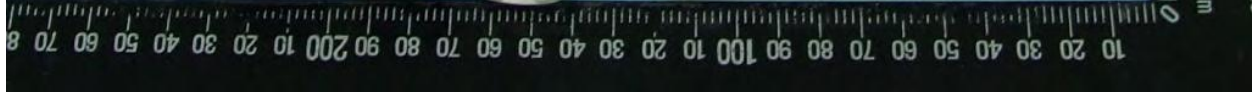
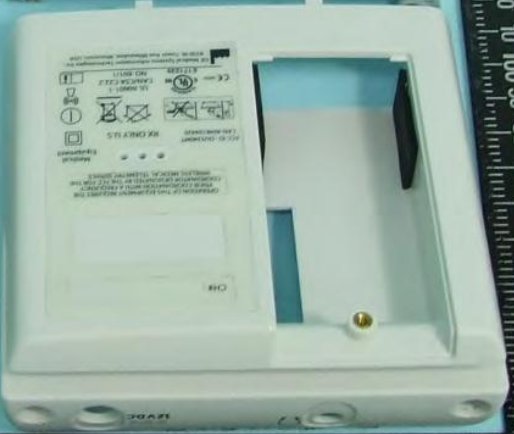
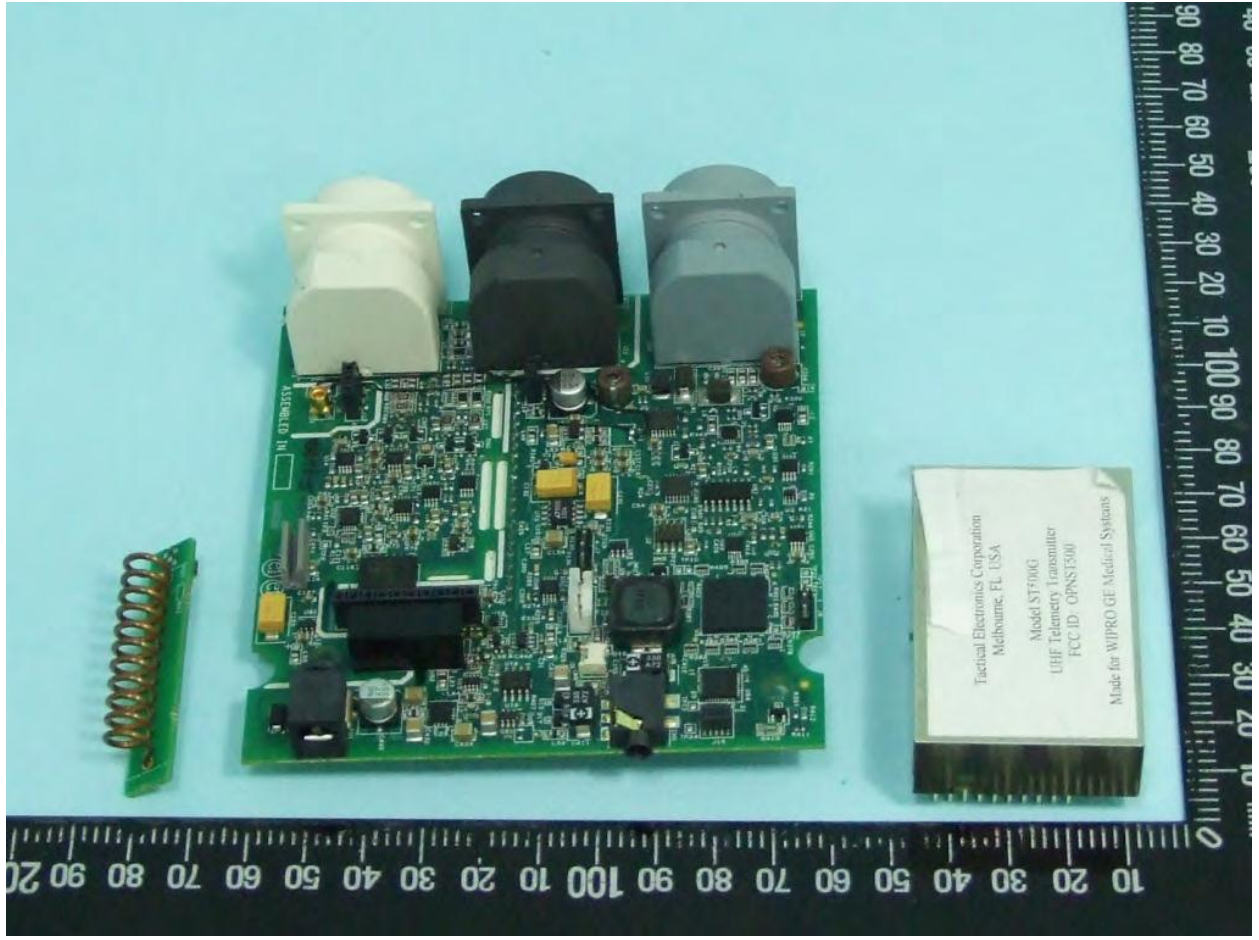


Internal Photos

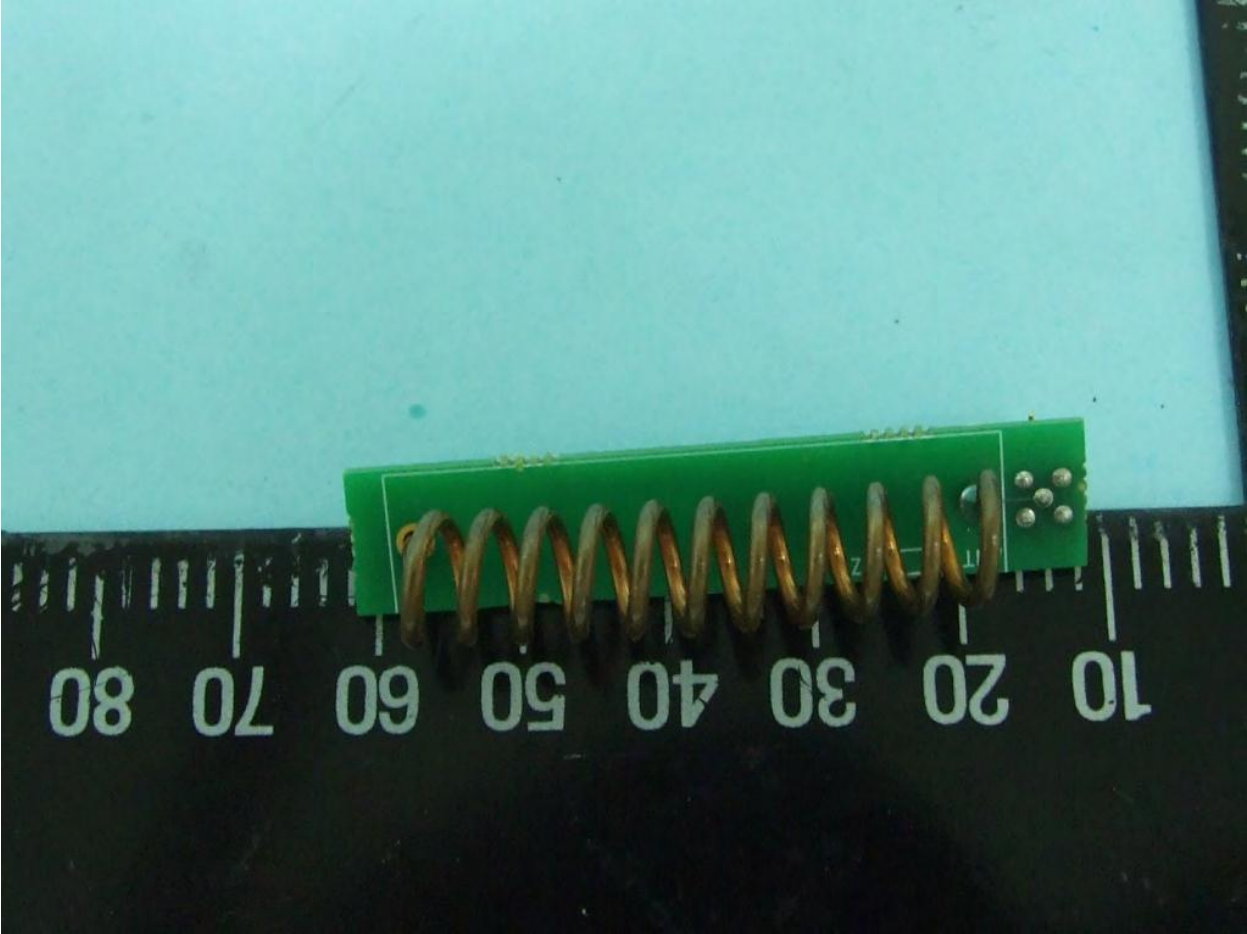








Tactical Electronics Corporation
Melbourne, FL, USA
Model ST5100G
UBF Telemetry Transmitter
FCC ID: OPNST5100
Made for WIPRO/GE Medical Systems



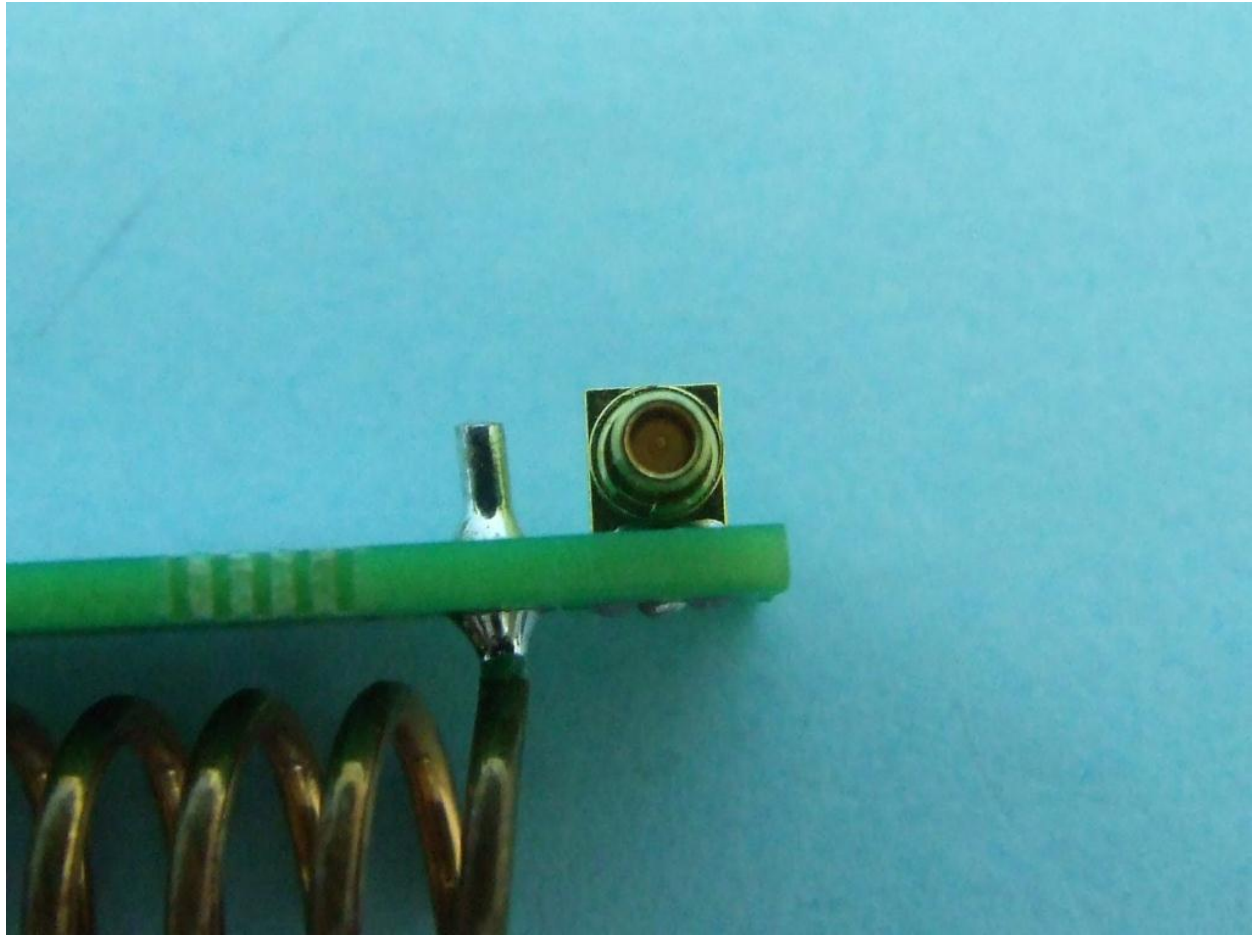


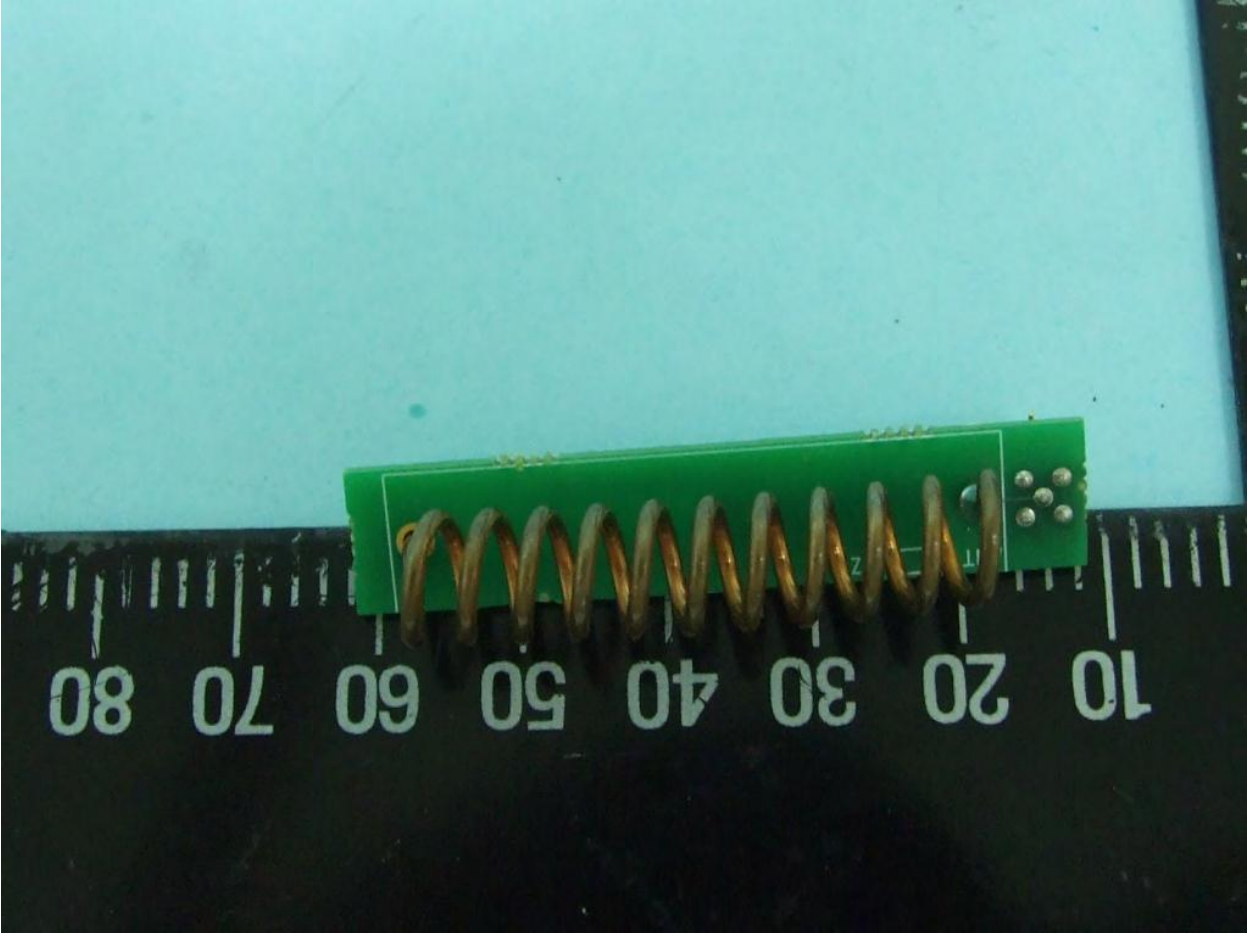
REV ▲ DATE:
GE HEALTH CARE

2049005-001
Proto 002
94V-0

J1

50 40 30 20







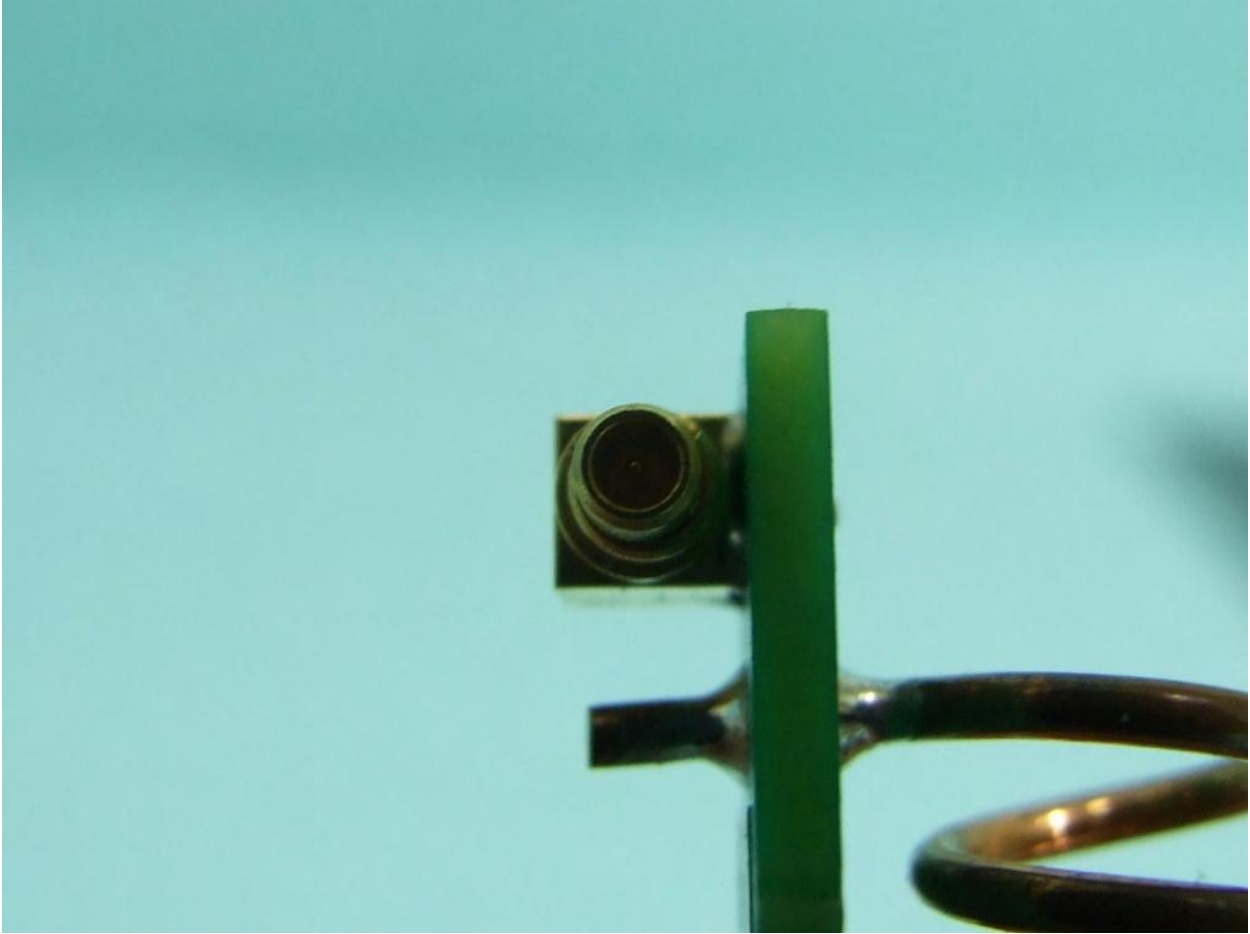
REV DATE:
 GE HEALTH CARE

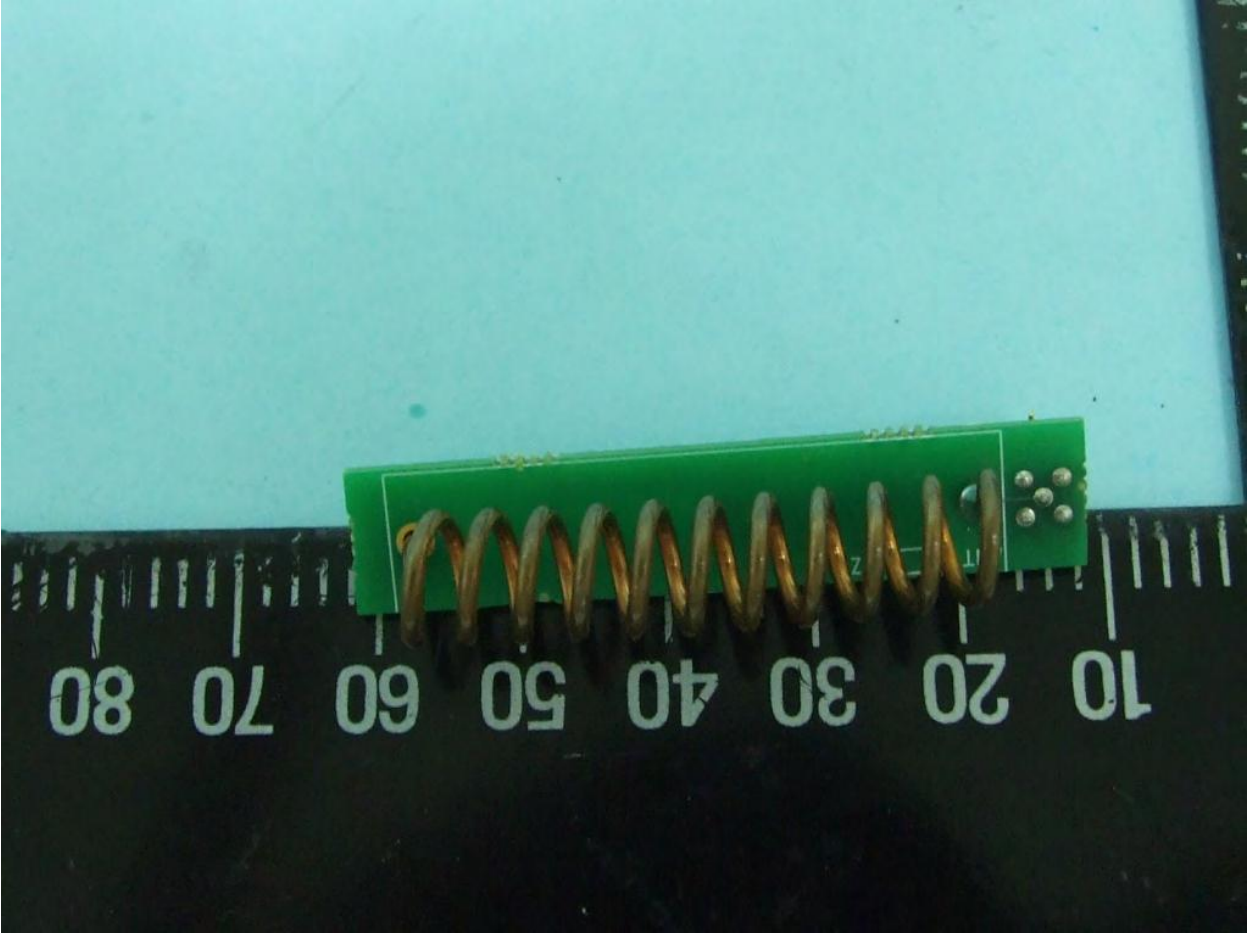
2049005-001
Proto 003

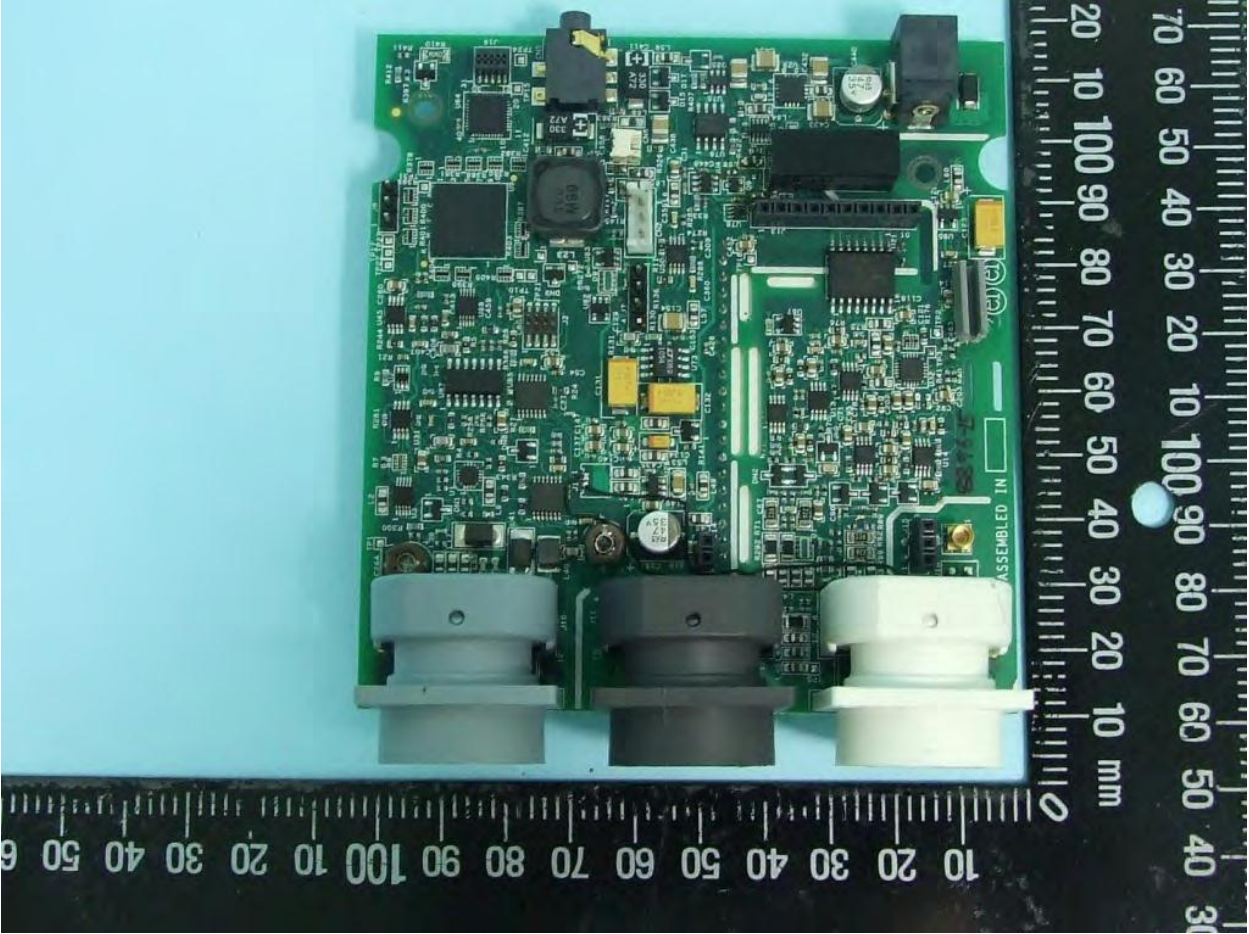
94V-0

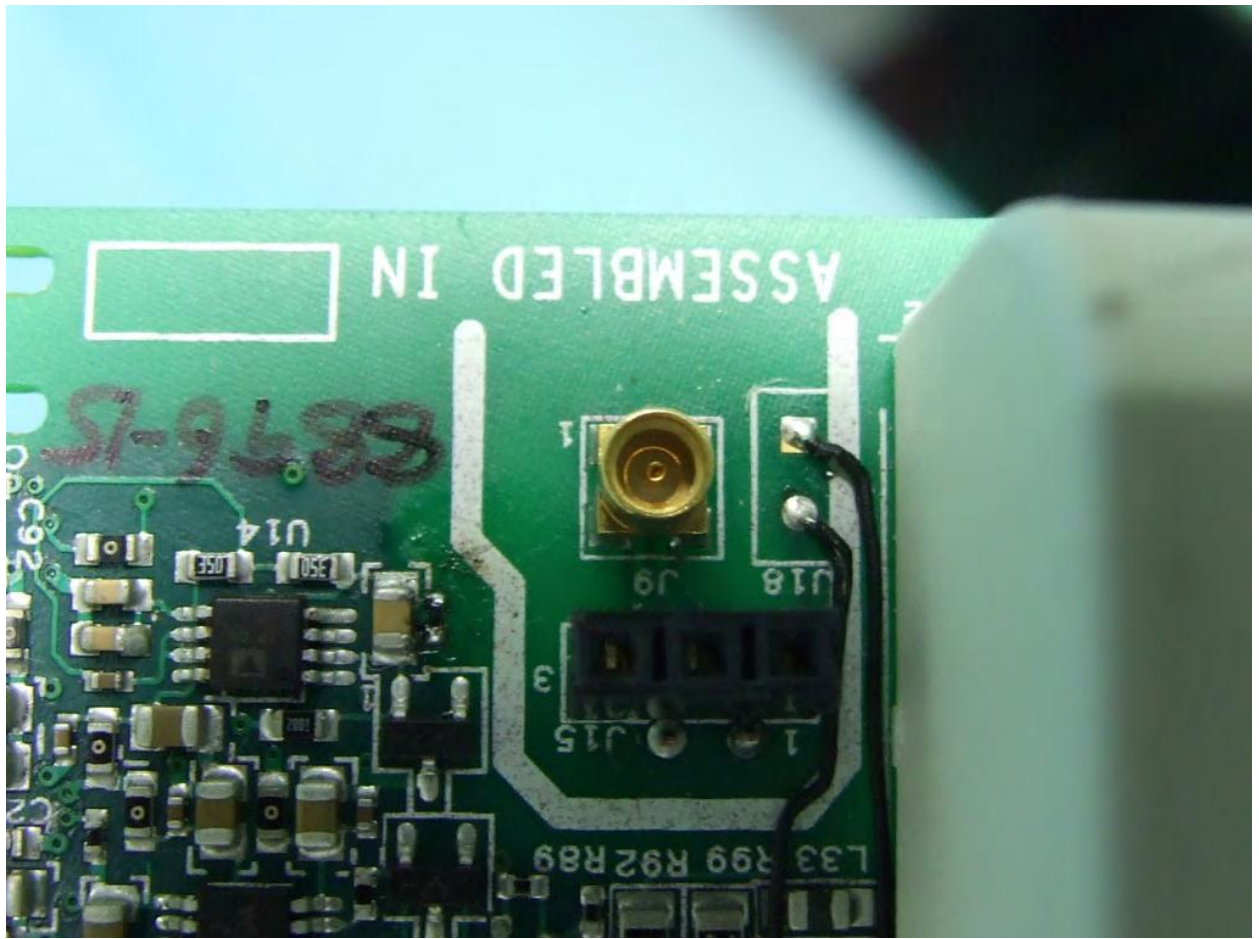
J1







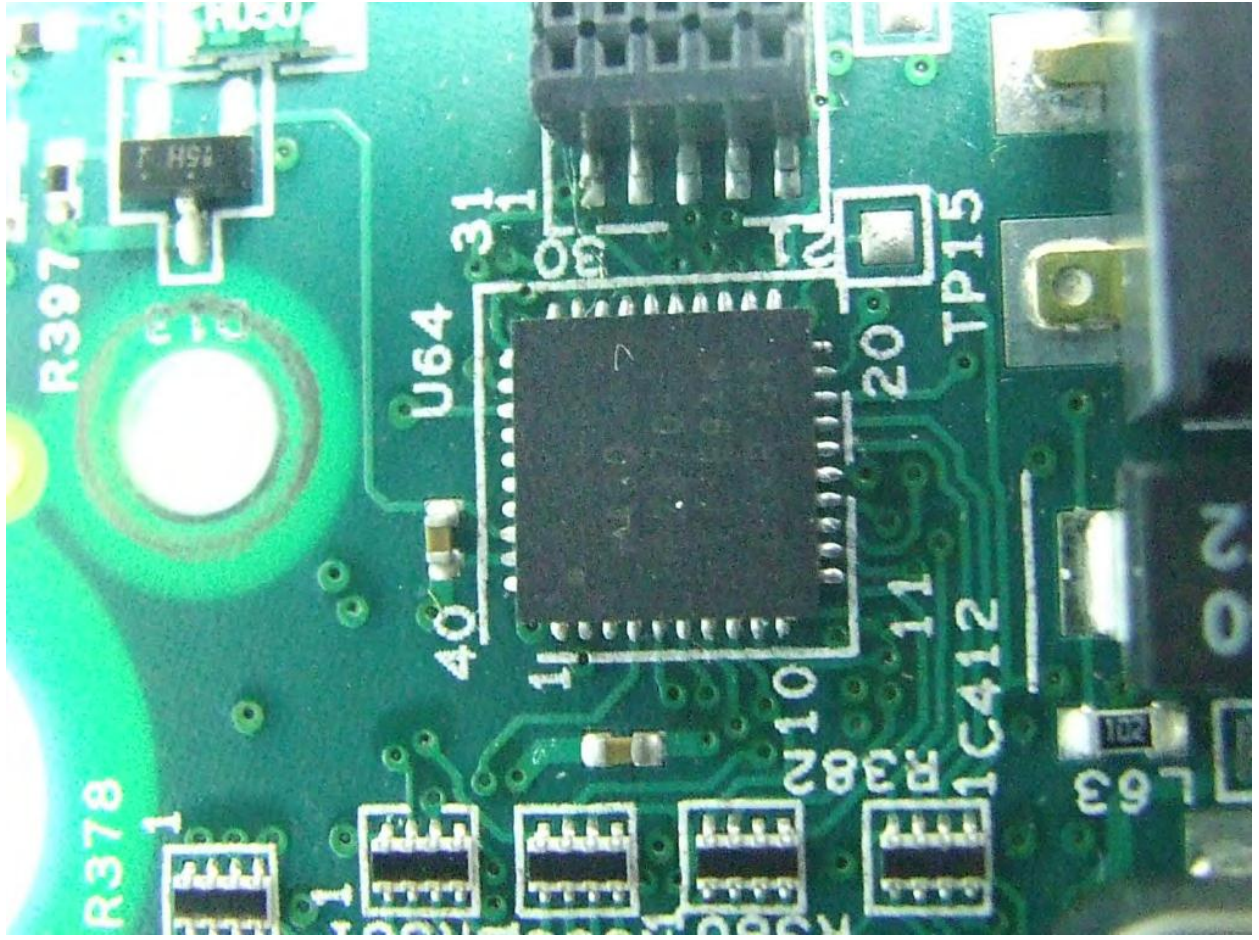


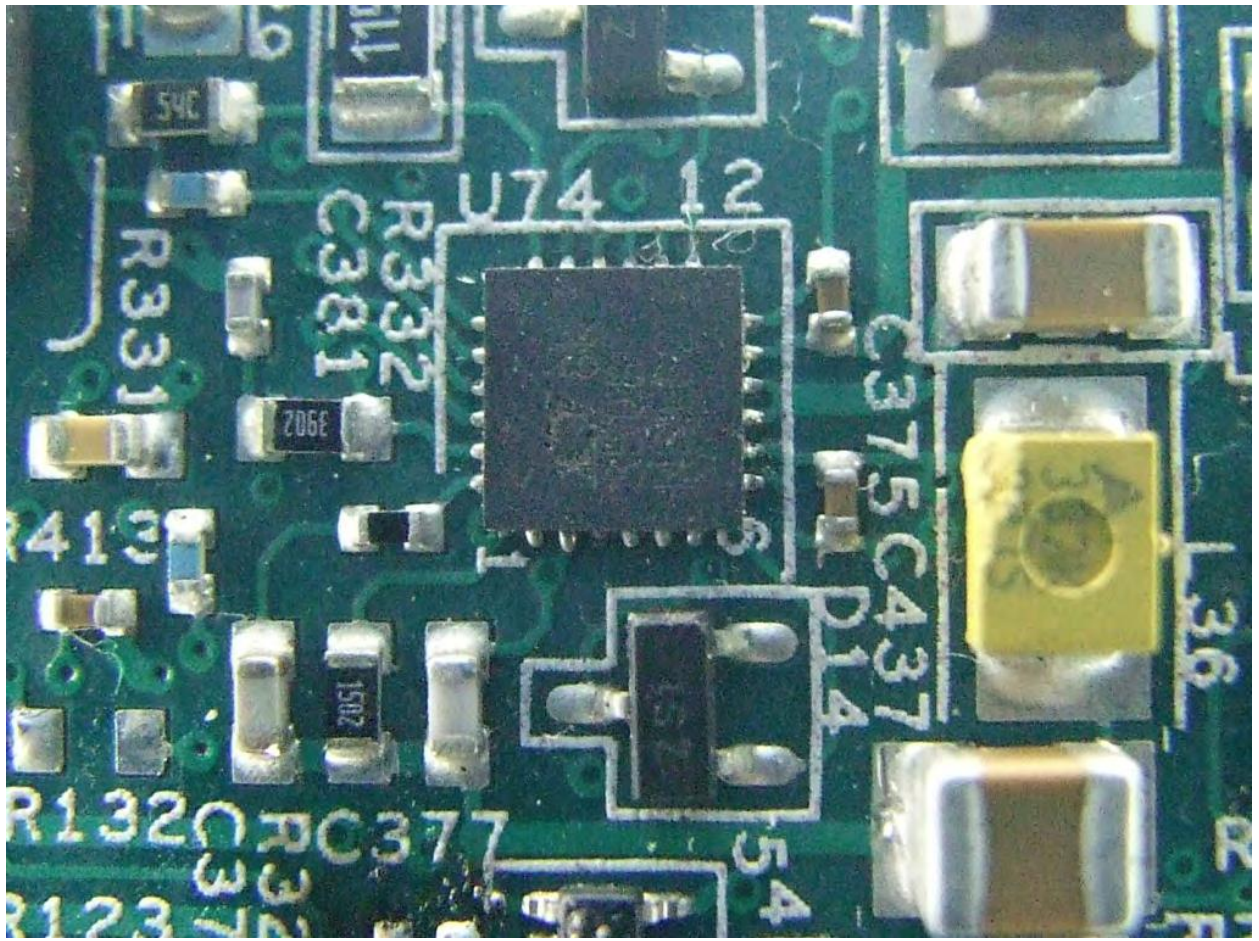


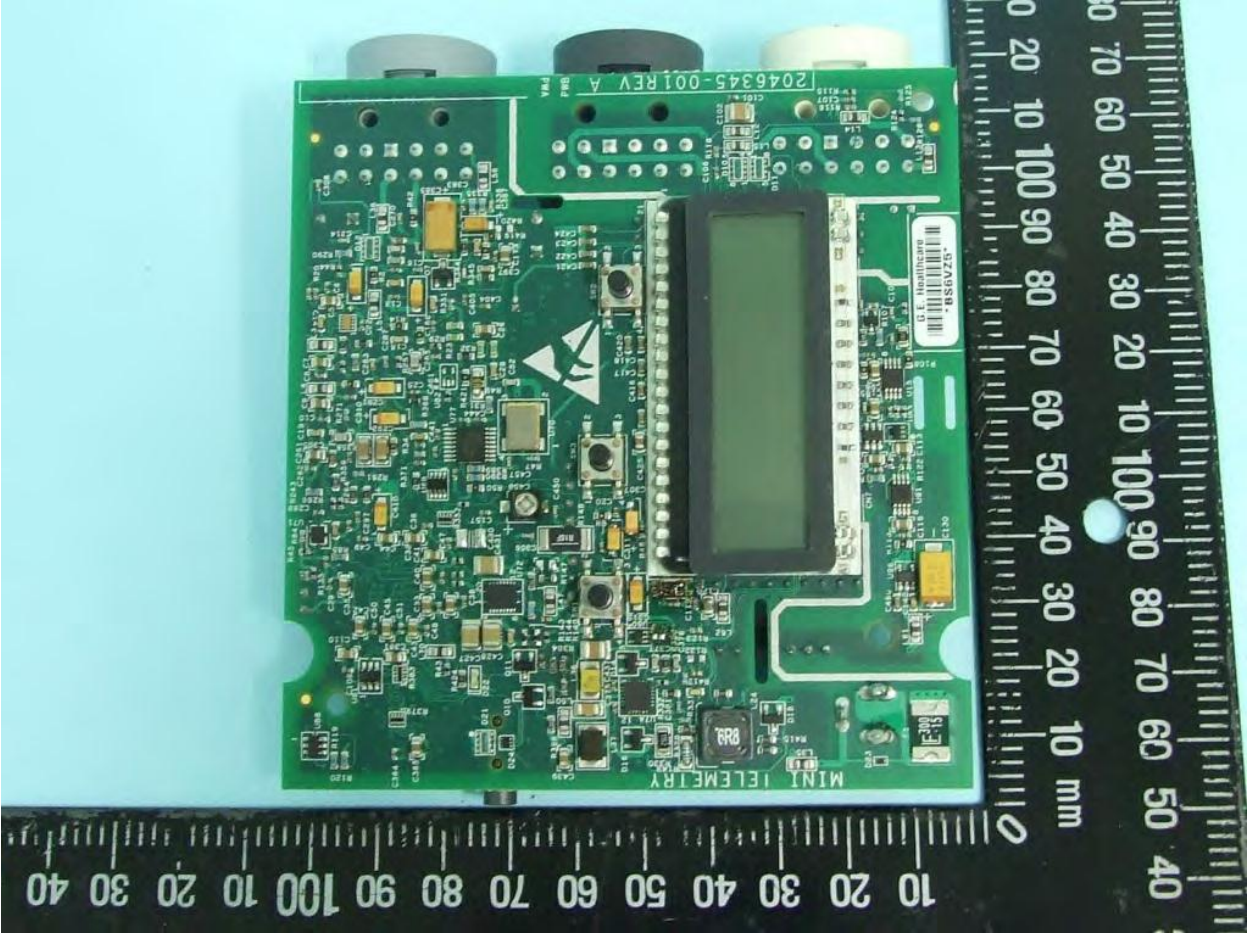


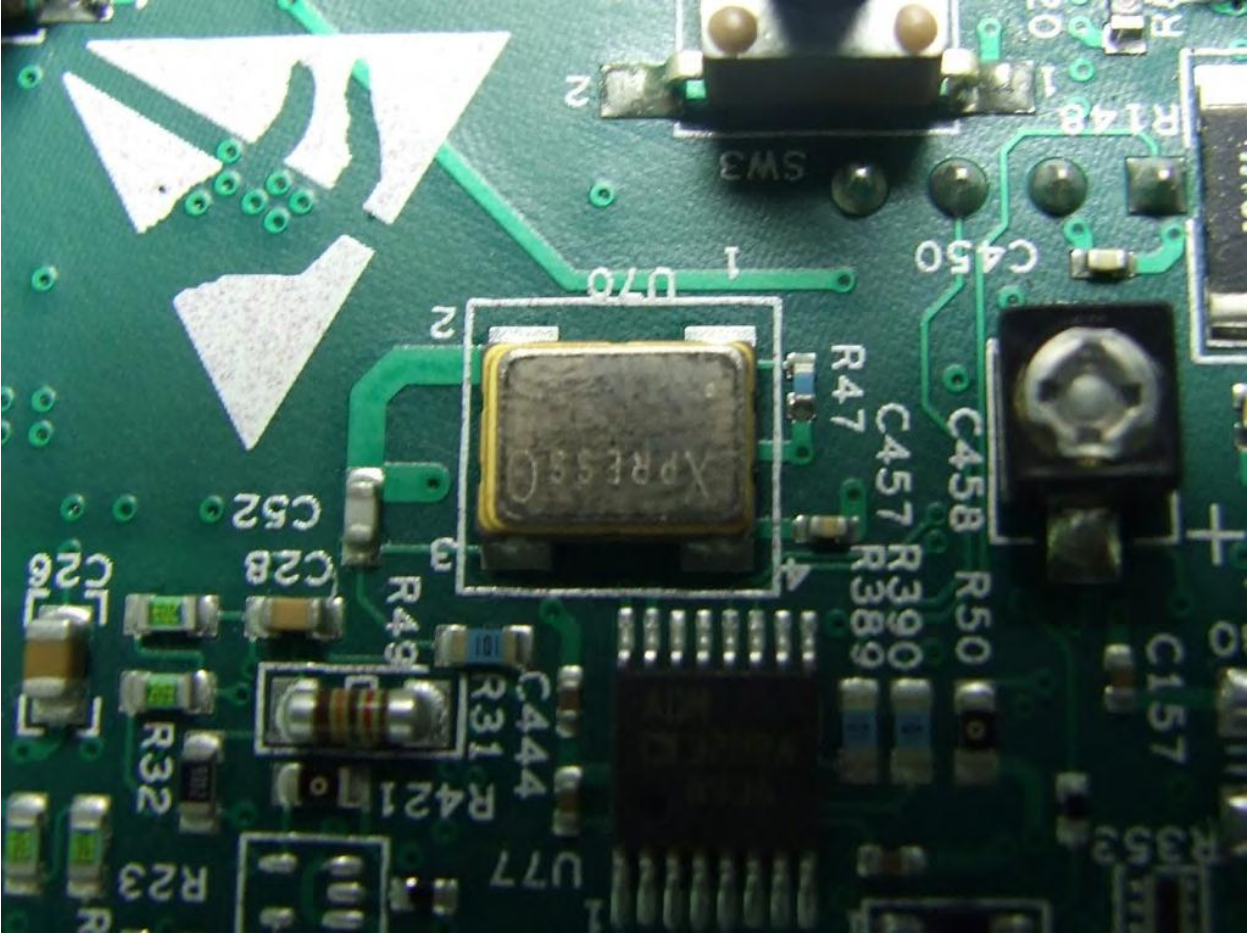
ALTERA
EPM5706F100C5N
N CBFSM0237A
KOREA
V812MS1000
1A7

TP22 TP21
60
R398 R398 R398
C3 C2 C1
R401 R400
K H F C A
R404
R405
R398
R403
R387
TP10
21









10 20 30 40 50 60 70



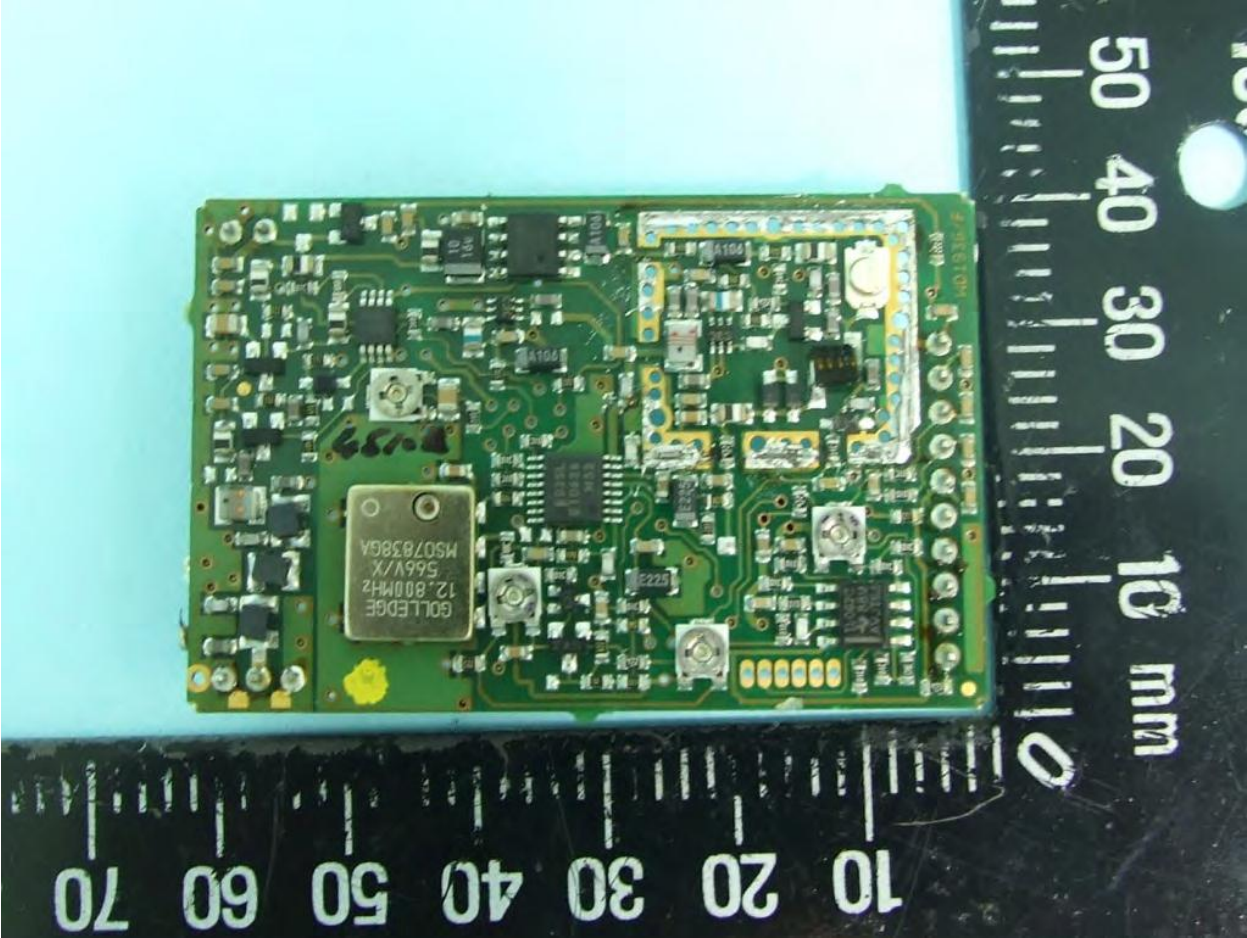
0 30 20 10 100 90 80 70 60 50 40 30 20 10 100 90 80 70 60 50 40 30 20 10 60 70 80 90 100 mm



45820-4

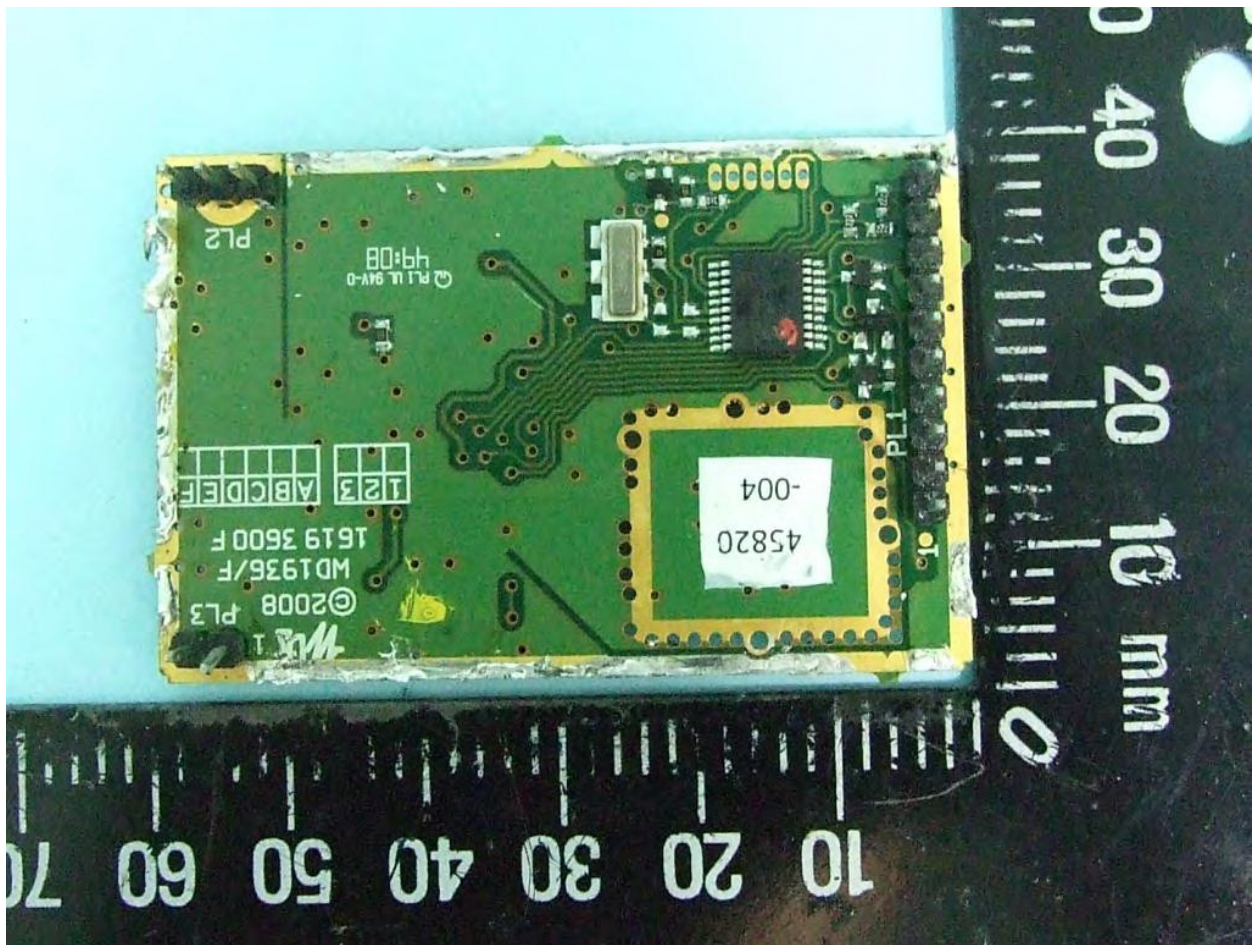
Model: ST5186G
UHF Telemetry Transmitter
FCC ID: GFNS17500

Tactical Electronics Corporation
Melbourne, FL USA
Model: ST5186G
UHF Telemetry Transmitter
FCC ID: GFNS17500
Made for WIPRO GE Medical Systems
BE 12/20/09









123 ABCDEF

MD1936/F
1619 3600 F

©2008 PL3

W&I

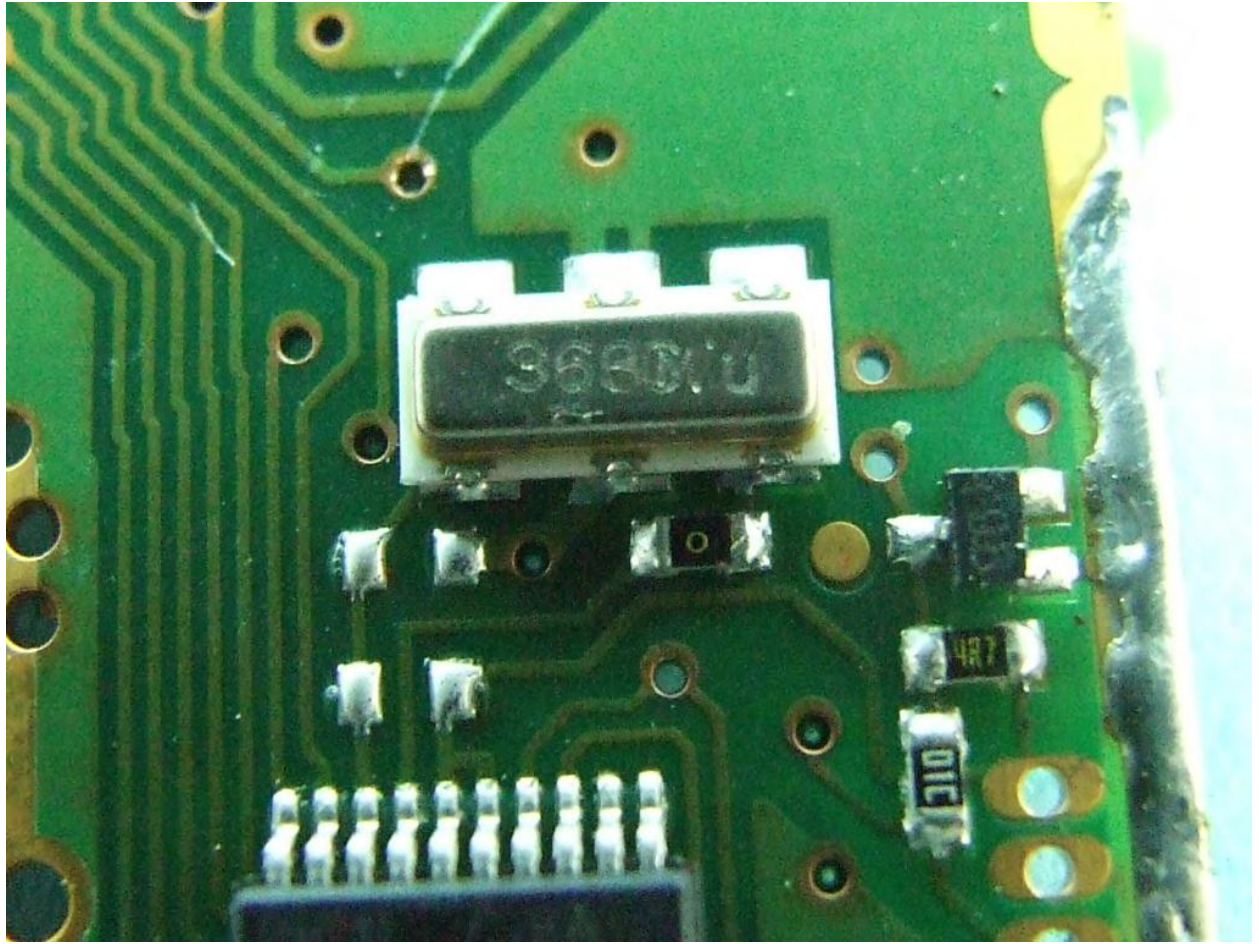
PL1 UL 94V-0
49:08

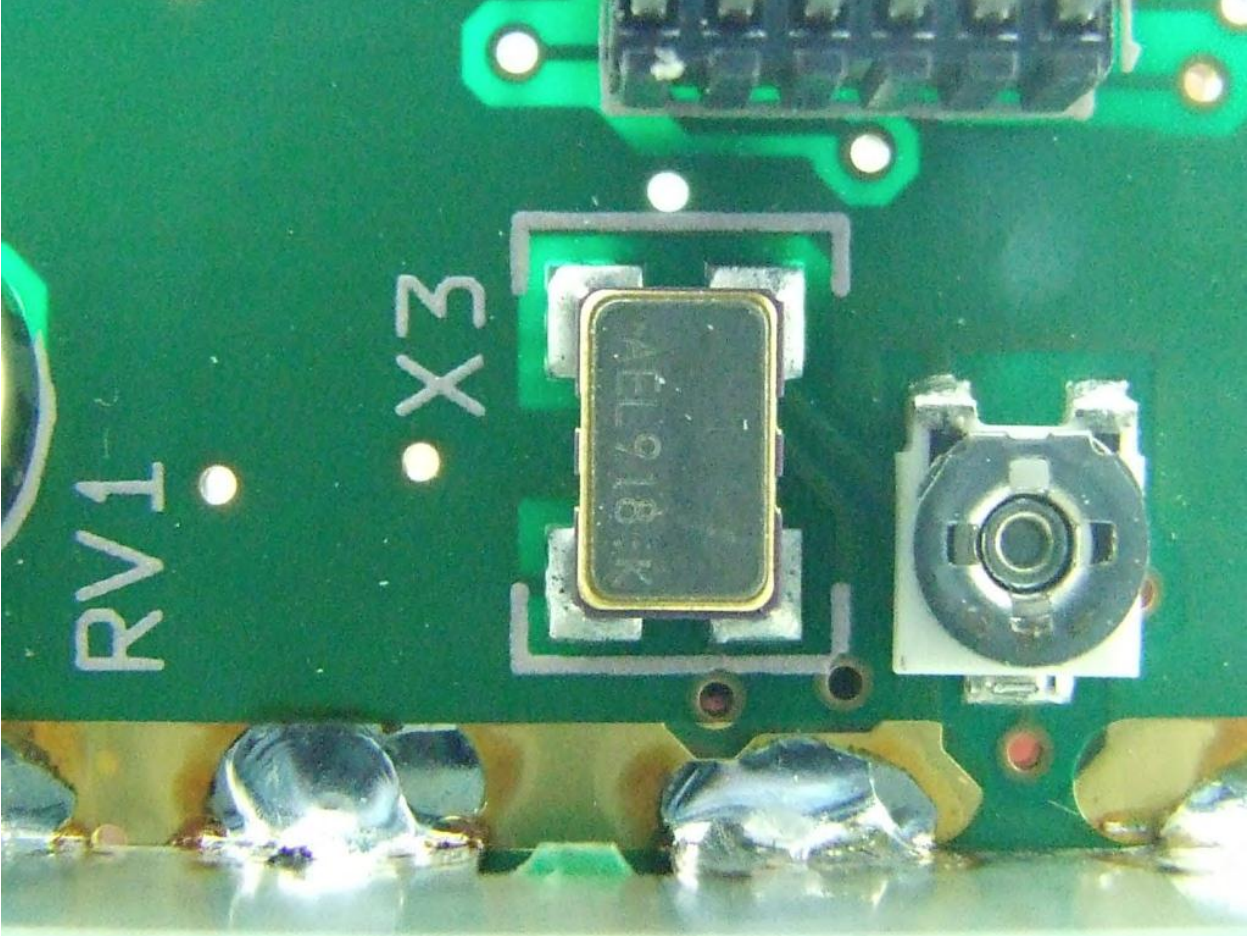
PL2

45820
-004

0 40 30 20 10 mm

10 20 30 40 50 60 70









MEDICAL POWER SUPPLY

MODEL MW172KB1203B01

INPUT : 100-240 V~, 50-60 Hz, 0.5 A

OUTPUT : + 12 V ==, 1.5 A

UL[®]
us
E302267

CE **IV**




SL POWER™ and AULT®
MADE IN KOREA

MEDICAL POWER SUPPLY

MODEL MW172KB1203B01

INPUT : 100-240 V~, 50-60 Hz, 0.5 A

OUTPUT : + 12 V  , 1.5 A

UL[®] US
E302267

CE **IV**

RoHS



SL POWER™ and AULT®

MADE IN KOREA