

# Reference Test Report Number: ULR-TC568822300000105F

## Appendix B: SAR Plots of System Verification

### System Performance Check Report

#### Summary

Dipole	Frequency [MHz]	TSL	Power [dBm]	Dev. 1g [%]	Dev. 10g [%]	Dev. Peak [%]	Iso. Error [%]
D2450V2 – SN902	2450.0	HSL	17.0	-0.40	-1.20	2.6	-2.3

#### Exposure Conditions

Phantom Section, TSL	Position, Test Distance [mm]	Band	Group, UID	Frequency [MHz], Channel Number	Conversion Factor	TSL Conductivity [S/m]	TSL Permittivity
Flat, HSL	,	,	0--	2600.0, 0	7.59	1.78	37.40

#### Hardware Setup

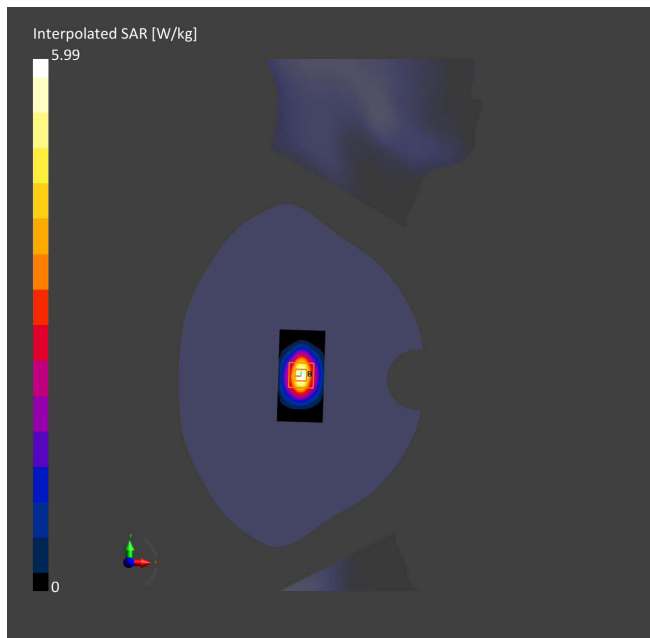
Phantom	TSL, Measured Date	Probe, Calibration Date	DAE, Calibration Date
Twin-SAM V4.0 (30deg probe tilt) – 1351	HBBL-600-10000 Charge:xxxx, 2022-Aug-10	EX3DV4 – SN7374, 2022-08-30	DAE4 Sn640, 2022-08-18

#### Scans Setup

	Area Scan	Zoom Scan
Grid Extents [mm]	40.0 x 80.0	30.0 x 30.0 x 30.0
Grid Steps [mm]	10.0 x 05.0	5.0 x 5.0 x 1.5
Sensor Surface [mm]	3.0	1.4
Graded Grid	No	No
Grading Ratio	n/a	n/a
MAIA	N/A	N/A
Surface Detection	VMS	VMS + 6p
Scan Method	Measured	Measured

#### Measurement Results

	Area Scan	Zoom Scan
Date	2022-08-10, 11:26	2022-08-10, 11:33
psSAR1g [W/Kg]	2.70	2.70
psSAR10g [W/Kg]	1.24	1.24
Power Drift [dB]	-0.01	0.03
Power Scaling	Disabled	Disabled
Scaling Factor [dB]		
TSL Correction	No correction	No correction



## System Performance Check Report

### Summary

Dipole	Frequency [MHz]	TSL	Power [dBm]	Dev. 1g [%]	Dev. 10g [%]	Dev. Peak [%]	Iso. Error [%]
D5GHzV2 - SN1144	5200.0	HSL	17.0	-8.9	-7.8	-6.6	-3.8

### Exposure Conditions

Phantom Section, TSL	Position, Test Distance [mm]	Band	Group, UID	Frequency [MHz], Channel Number	Conversion Factor	TSL Conductivity [S/m]	TSL Permittivity
Flat, HSL	,		, 0--	5200.0, 0	5.35	4.50	34.8

### Hardware Setup

Phantom	TSL, Measured Date	Probe, Calibration Date	DAE, Calibration Date
Twin-SAM V4.0 (30deg probe tilt) - 1351	HBBL-600-10000 Charge:xxxx, 2022-Aug-10	EX3DV4 - SN7374, 2022-08-28	DAE4 Sn640, 2022-08-18

### Scans Setup

	Area Scan	Zoom Scan
Grid Extents [mm]	40.0 x 80.0	22.0 x 22.0 x 22.0
Grid Steps [mm]	10.0 x 10.0	4.0 x 4.0 x 1.4
Sensor Surface [mm]	3.0	1.4
Graded Grid	No	Yes
Grading Ratio	n/a	1.4
MAIA	N/A	N/A
Surface Detection	VMS	VMS + 6p
Scan Method	Measured	Measured

### Measurement Results

	Area Scan	Zoom Scan
Date	2022-08-10, 14:44	2022-08-10, 14:50
psSAR1g [W/Kg]	3.46	3.66
psSAR10g [W/Kg]	0.981	1.06
Power Drift [dB]	-0.02	0.04
Power Scaling	Disabled	Disabled
Scaling Factor [dB]		
TSL Correction	No correction	No correction

