

Reference Test Report number: ULR-TC568822300000105F

Appendix A Plot: Plots for SAR Measurement

Wifi-2.4GHz

Note: Only worst case plots has been reported

Measurement Report for VscanAirSL, FRONT, WLAN 2.4GHz, IEEE 802.11b WiFi 2.4 GHz (DSSS, 1 Mbps, 96pc duty cycle), Channel 6 (2437.0 MHz)

Device Under Test Properties

Model, Manufacturer	Dimensions [mm]	IMEI	DUT Type
VscanAirSL, GE healthcare	141.0 x 67.0 x 33.0		Ultrasound Scanner

Exposure Conditions

Phantom Section, TSL	Position, Test Distance [mm]	Band	Group, UID	Frequency [MHz], Channel Number	Conversion Factor	TSL Conductivity [S/m]	TSL Permittivity
Flat, HSL	FRONT, 0.00	WLAN 2.4GHz	WLAN, 10315-AAB	2437.0, 6	7.59	1.77	37.4

Hardware Setup

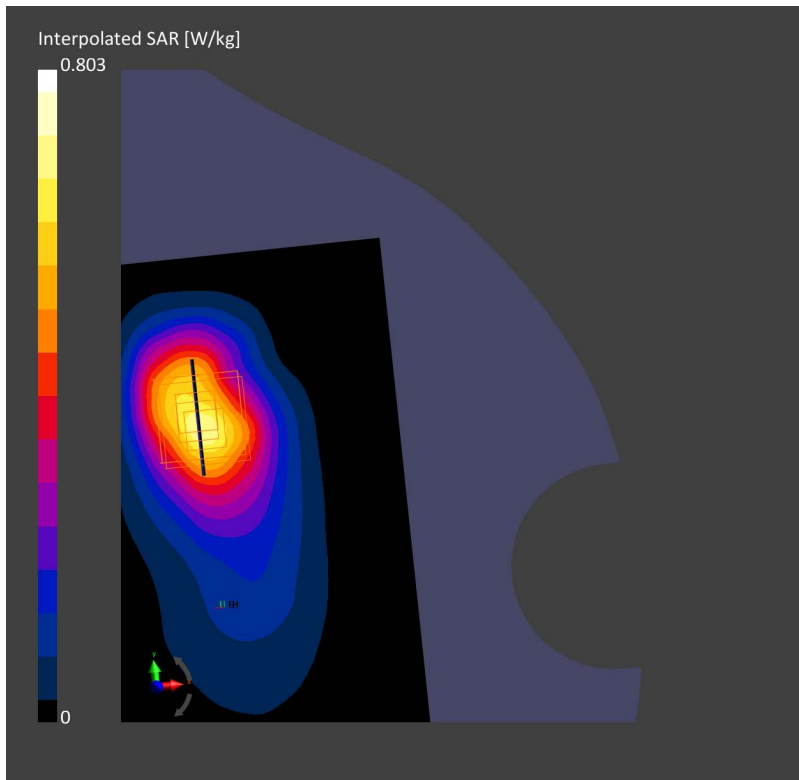
Phantom	TSL, Measured Date	Probe, Calibration Date	DAE, Calibration Date
Twin-SAM V4.0 (30deg probe tilt) - 1351	HBBL-600-10000 Charge:xxxx, 2022-Aug-10	EX3DV4 - SN7374, 2022-08-30	DAE4 Sn640, 2022-08-18

Scans Setup

	Area Scan	Zoom Scan
Grid Extents [mm]	100.0 x 180.0	30.0 x 30.0 x 30.0
Grid Steps [mm]	10.0 x 10.0	5.0 x 5.0 x 1.5
Sensor Surface [mm]	3.0	1.4
Graded Grid	No	Yes
Grading Ratio	n/a	1.5
MAIA	N/A	N/A
Surface Detection	VMS + 6p	VMS + 6p
Scan Method	Measured	Measured

Measurement Results

	Area Scan	Zoom Scan
Date	2022-08-11, 00:32	2022-08-11, 00:40
psSAR1g [W/Kg]	0.367	0.366
psSAR10g [W/Kg]	0.188	0.184
Power Drift [dB]	-0.02	-0.06
Power Scaling	Disabled	Disabled
Scaling Factor [dB]		
TSL Correction	No correction	No correction
M2/M1 [%]		75.9
Dist 3dB Peak [mm]		10.6



Measurement Report for VscanAirSL, FRONT, WLAN 2.4GHz, IEEE 802.11g WiFi 2.4 GHz (ERP-OFDM, 6 Mbps, 96pc duty cycle), Channel 6 (2437.0 MHz)

Device Under Test Properties

Model, Manufacturer	Dimensions [mm]	IMEI	DUT Type
VscanAirSL, GE healthcare	141.0 x 67.0 x 33.0		Ultrasound Scanner

Exposure Conditions

Phantom Section, TSL	Position, Test Distance [mm]	Band	Group, UID	Frequency [MHz], Channel Number	Conversion Factor	TSL Conductivity [S/m]	TSL Permittivity
Flat, HSL	FRONT, 0.00	WLAN 2.4GHz	WLAN, 10316-AAB	2437.0, 6	7.59	1.77	37.4

Hardware Setup

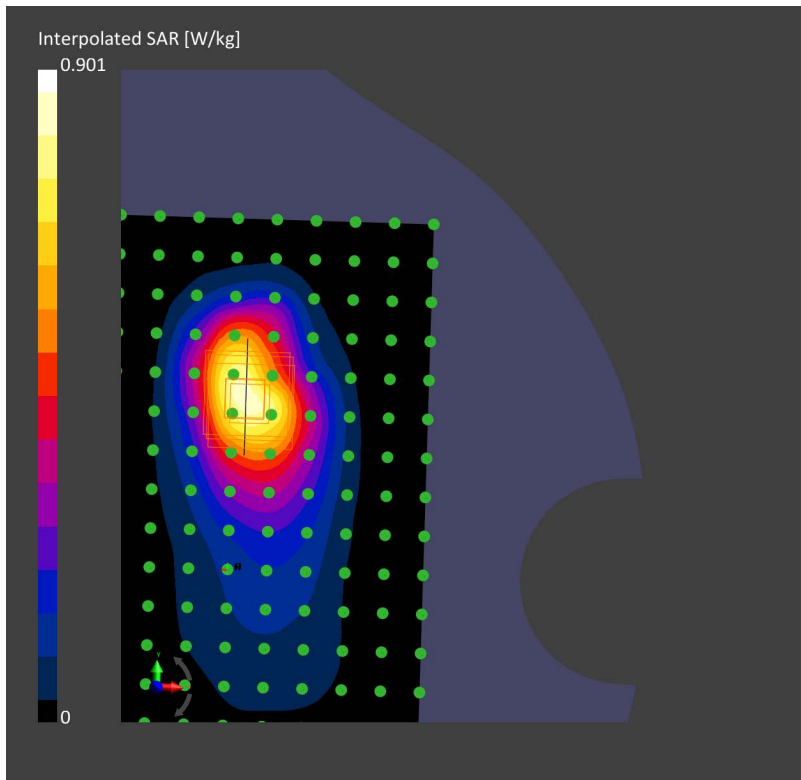
Phantom	TSL, Measured Date	Probe, Calibration Date	DAE, Calibration Date
Twin-SAM V4.0 (30deg probe tilt) - 1351	HBBL-600-10000 Charge:xxxx, 2022-Aug-10	EX3DV4 - SN7374, 2022-08-30	DAE4 Sn640, 2022-08-18

Scans Setup

	Area Scan	Zoom Scan
Grid Extents [mm]	100.0 x 180.0	30.0 x 30.0 x 30.0
Grid Steps [mm]	10.0 x 10.0	5.0 x 5.0 x 1.5
Sensor Surface [mm]	3.0	1.4
Graded Grid	No	Yes
Grading Ratio	n/a	1.5
MAIA	N/A	N/A
Surface Detection	VMS + 6p	VMS + 6p
Scan Method	Measured	Measured

Measurement Results

	Area Scan	Zoom Scan
Date	2022-08-10, 21:43	2022-08-10, 21:52
psSAR1g [W/Kg]	0.418	0.414
psSAR10g [W/Kg]	0.219	0.209
Power Drift [dB]	-0.13	-0.1
Power Scaling	Disabled	Disabled
Scaling Factor [dB]		
TSL Correction	No correction	No correction
M2/M1 [%]		75.3
Dist 3dB Peak [mm]		9.8



Measurement Report for Device, FRONT, WLAN 2.4GHz, IEEE 802.11n (HT Mixed, 20MHz, MCS0, 90pc duty cycle), Channel 6 (2437.0 MHz)

Device Under Test Properties

Model, Manufacturer	Dimensions [mm]	IMEI	DUT Type
Device,	141.0 x 67.0 x 33.0		Ultrasound Scanner

Exposure Conditions

Phantom Section, TSL	Position, Test Distance [mm]	Band	Group, UID	Frequency [MHz], Channel Number	Conversion Factor	TSL Conductivity [S/m]	TSL Permittivity
Flat, HSL	FRONT, 5.00	WLAN 2.4GHz	WLAN, 10591-AAB	2437.0, 6	7.59	1.77	37.4

Hardware Setup

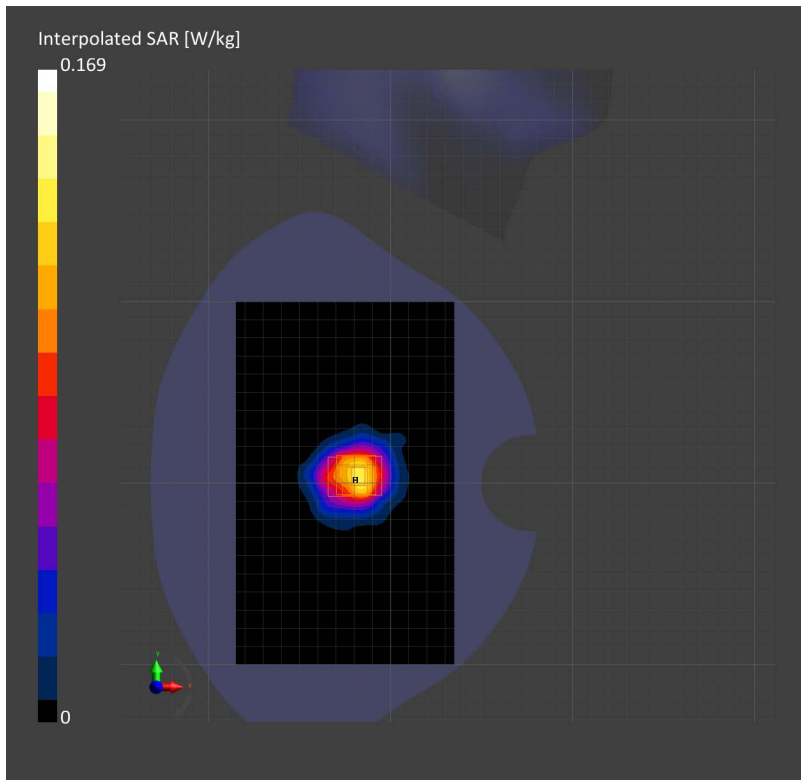
Phantom	TSL, Measured Date	Probe, Calibration Date	DAE, Calibration Date
Twin-SAM V4.0 (30deg probe tilt) - 1351	HBBL-600-10000 Charge:xxxx, 2022-Aug-10	EX3DV4 - SN7374, 2022-08-30	DAE4 Sn640, 2022-08-18

Scans Setup

	Area Scan	Zoom Scan
Grid Extents [mm]	120.0 x 200.0	30.0 x 30.0 x 30.0
Grid Steps [mm]	10.0 x 10.0	3.6 x 3.6 x 1.4
Sensor Surface [mm]	3.0	1.4
Graded Grid	No	Yes
Grading Ratio	n/a	1.4
MAIA	N/A	N/A
Surface Detection	VMS + 6p	VMS + 6p
Scan Method	Measured	Measured

Measurement Results

	Area Scan	Zoom Scan
Date	2022-08-10, 19:54	2022-08-10, 20:10
psSAR1g [W/Kg]	0.324	0.331
psSAR10g [W/Kg]	0.172	0.167
Power Drift [dB]	-0.05	-0.07
Power Scaling	Disabled	Disabled
Scaling Factor [dB]		
TSL Correction	No correction	No correction
M2/M1 [%]		49.3
Dist 3dB Peak [mm]		6.5



Measurement Report for Device, FRONT, WLAN 2.4GHz, IEEE 802.11n (HT Greenfield, 15 Mbps, BPSK), Channel 11 (2462.0 MHz) Device

Under Test Properties

Model, Manufacturer	Dimensions [mm]	IMEI	DUT Type
Device,	141.0 x 67.0 x 33.0		Ultrasound Scanner

Exposure Conditions

Phantom Section, TSL	Position, Test Distance [mm]	Band	Group, UID	Frequency [MHz], Channel Number	Conversion Factor	TSL Conductivity [S/m]	TSL Permittivity
Flat, HSL	FRONT, 0.00	WLAN 2.4GHz	WLAN, 10591-AAB	2437.0, 6	7.59	1.77	37.4

Hardware Setup

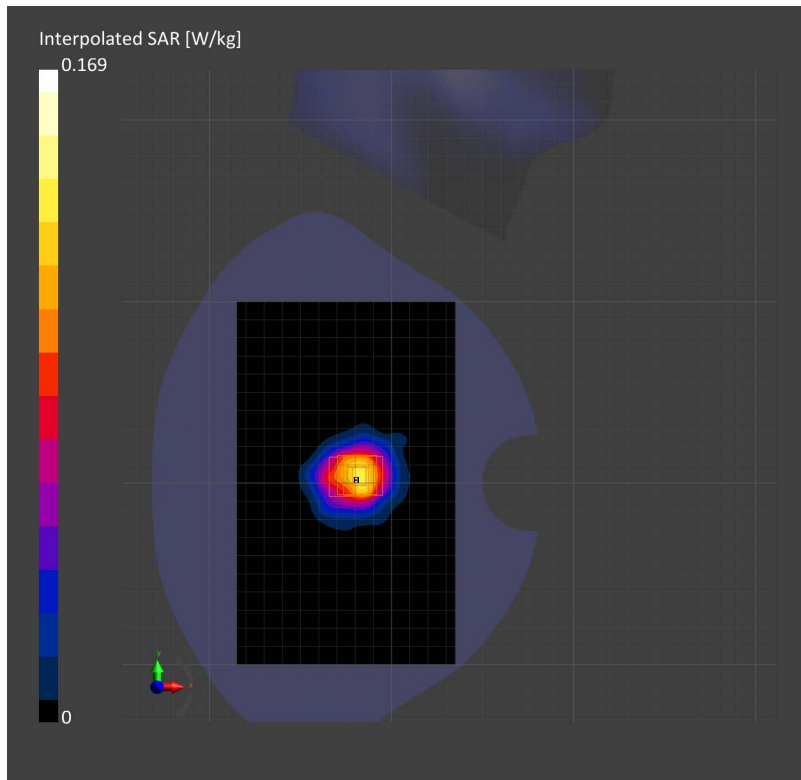
Phantom	TSL, Measured Date	Probe, Calibration Date	DAE, Calibration Date
Twin-SAM V4.0 (30deg probe tilt) - 1351	HBBL-600-10000 Charge:xxxx, 2022-Aug-10	EX3DV4 - SN7374, 2022-08-30	DAE4 Sn640, 2022-08-18

Scans Setup

	Area Scan	Zoom Scan
Grid Extents [mm]	120.0 x 200.0	30.0 x 30.0 x 30.0
Grid Steps [mm]	10.0 x 10.0	3.6 x 3.6 x 1.4
Sensor Surface [mm]	3.0	1.4
Graded Grid	No	Yes
Grading Ratio	n/a	1.4
MAIA	N/A	N/A
Surface Detection	VMS + 6p	VMS + 6p
Scan Method	Measured	Measured

Measurement Results

	Area Scan	Zoom Scan
Date	2022-08-10, 22:43	2022-08-10, 22:52
psSAR1g [W/Kg]	0.233	0.228
psSAR10g [W/Kg]	0.118	0.114
Power Drift [dB]	0	--0.05
Power Scaling	Disabled	Disabled
Scaling Factor [dB]		
TSL Correction	No correction	No correction
M2/M1 [%]		49.3
Dist 3dB Peak [mm]		6.5



Wifi-5GHz

Measurement Report for Device, FRONT, WLAN 5GHz, IEEE 802.11a WiFi 5 GHz (OFDM, 6 Mbps, 96pc duty cycle), Channel 48 (5240.0 MHz)

Device Under Test Properties

Model, Manufacturer	Dimensions [mm]	IMEI	DUT Type
VscanAirSL, GE healthcare	141.0 x 67.0 x 33.0		Ultrasound Scanner

Exposure Conditions

Phantom Section, TSL	Position, Test Distance [mm]	Band	Group, UID	Frequency [MHz], Channel Number	Conversion Factor	TSL Conductivity [S/m]	TSL Permittivity
Flat, HSL	FRONT, 5.00	WLAN 5GHz	WLAN, 10317-AAC	5240.0, 48	5.35	4.44	34.7

Hardware Setup

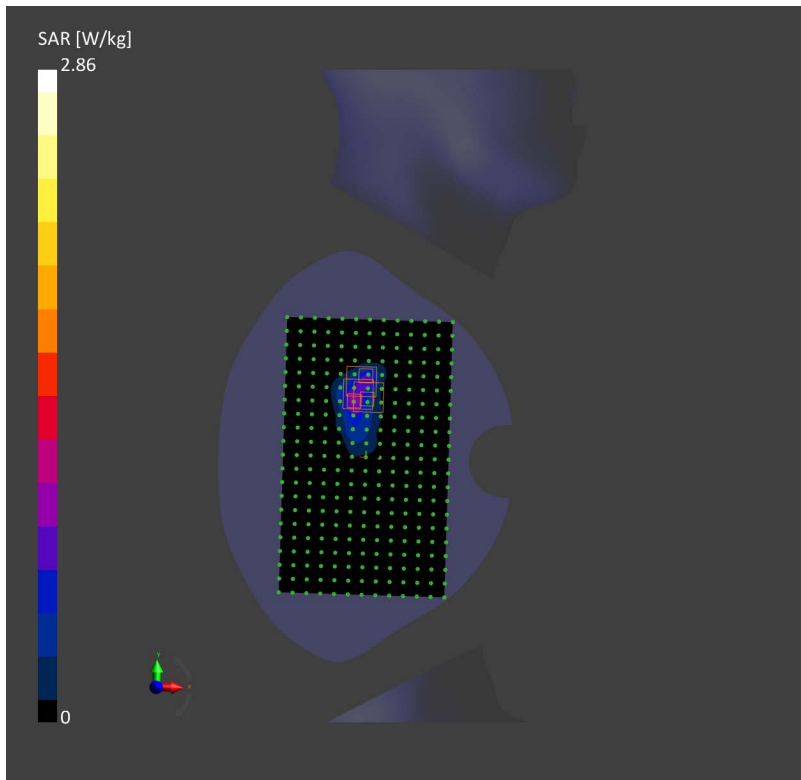
Phantom	TSL, Measured Date	Probe, Calibration Date	DAE, Calibration Date
Twin-SAM V4.0 (30deg probe tilt) - 1351	HBBL-600-10000 Charge:xxxx, 2022-Aug-10	EX3DV4 - SN7374, 2022-08-30	DAE4 Sn640, 2022-08-18

Scans Setup

	Area Scan	Zoom Scan
Grid Extents [mm]	120.0 x 200.0	22.0 x 22.0 x 22.0
Grid Steps [mm]	10.0 x 10.0	4.0 x 4.0 x 1.4
Sensor Surface [mm]	3.0	1.4
Graded Grid	No	Yes
Grading Ratio	n/a	1.4
MAIA	N/A	N/A
Surface Detection	VMS + 6p	VMS + 6p
Scan Method	Measured	Measured

Measurement Results

	Area Scan	Zoom Scan
Date	2022-08-11, 13:36	2022-08-11, 13:58
psSAR1g [W/Kg]	0.976	0.795
psSAR10g [W/Kg]	0.365	0.314
Power Drift [dB]	-1.15	-0.31
Power Scaling	Disabled	Disabled
Scaling Factor [dB]		
TSL Correction	No correction	No correction
M2/M1 [%]		63.4
Dist 3dB Peak [mm]		6.6



Measurement Report for Device, FRONT, U-NII-1, U-NII-2A, IEEE 802.11n (HT Mixed, 40MHz, MCS0, 90pc duty cycle), Channel 46 (5230.0 MHz)

Device Under Test Properties

Model, Manufacturer	Dimensions [mm]	IMEI	DUT Type
VscanAirSL, GE healthcare	141.0 x 67.0 x 33.0		Ultrasound Scanner

Exposure Conditions

Phantom Section, TSL	Position, Test Distance [mm]	Band	Group, UID	Frequency [MHz], Channel Number	Conversion Factor	TSL Conductivity [S/m]	TSL Permittivity
Flat, HSL	FRONT, 5.00	U-NII-1, U-NII-2A	WLAN, 10599-AAB	5230.0, 46	5.35	4.45	34.7

Hardware Setup

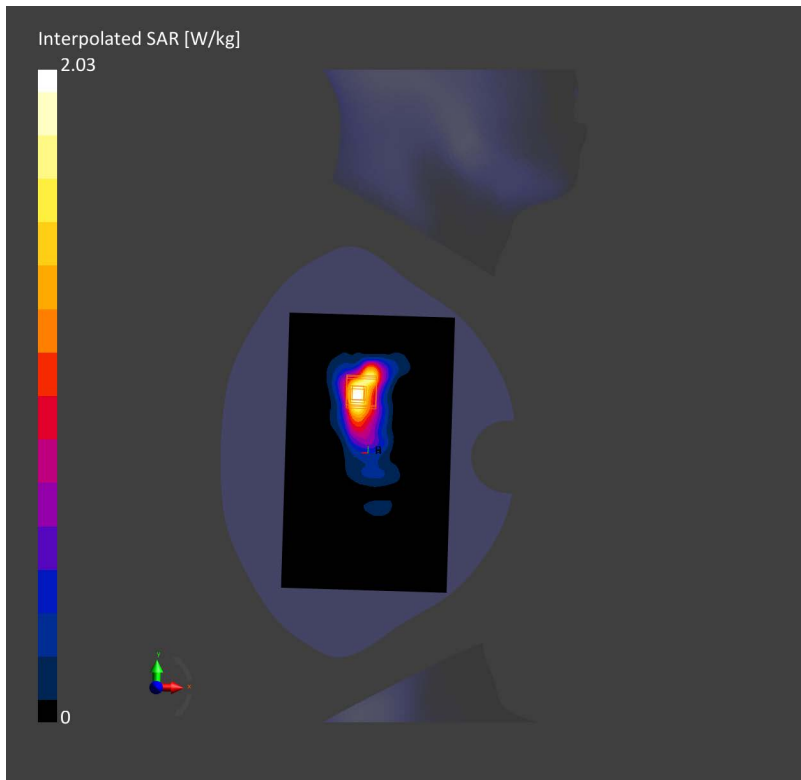
Phantom	TSL, Measured Date	Probe, Calibration Date	DAE, Calibration Date
Twin-SAM V4.0 (30deg probe tilt) - 1351	HBBL-600-10000 Charge:xxxx, 2022-Aug-10	EX3DV4 - SN7374, 2022-08-30	DAE4 Sn640, 2022-08-18

Scans Setup

	Area Scan	Zoom Scan
Grid Extents [mm]	120.0 x 200.0	22.0 x 22.0 x 22.0
Grid Steps [mm]	10.0 x 10.0	4.0 x 4.0 x 1.4
Sensor Surface [mm]	3.0	1.4
Graded Grid	No	Yes
Grading Ratio	n/a	1.4
MAIA	N/A	N/A
Surface Detection	VMS + 6p	VMS + 6p
Scan Method	Measured	Measured

Measurement Results

	Area Scan	Zoom Scan
Date	2022-08-11, 08:30	2022-08-11, 08:38
psSAR1g [W/Kg]	0.590	0.558
psSAR10g [W/Kg]	0.233	0.255
Power Drift [dB]	-0.12	-0.2
Power Scaling	Disabled	Disabled
Scaling Factor [dB]		
TSL Correction	No correction	No correction
M2/M1 [%]		67.2
Dist 3dB Peak [mm]		6.6



Measurement Report for Device, FRONT, U-NII-1, U-NII-2A, IEEE 802.11n (HT Mixed, 20MHz, MCS0, 90pc duty cycle), Channel 48 (5240.0 MHz)

Device Under Test Properties

Model, Manufacturer	Dimensions [mm]	IMEI	DUT Type
VscanAirSL, GE healthcare	141.0 x 67.0 x 33.0		Ultrasound Scanner

Exposure Conditions

Phantom Section, TSL	Position, Test Distance [mm]	Band	Group, UID	Frequency [MHz], Channel Number	Conversion Factor	TSL Conductivity [S/m]	TSL Permittivity
Flat, HSL	FRONT, 5.00	U-NII-1, U-NII-2A	WLAN, 10591-AAB	5240.0, 48	5.35	4.44	34.7

Hardware Setup

Phantom	TSL, Measured Date	Probe, Calibration Date	DAE, Calibration Date
Twin-SAM V4.0 (30deg probe tilt) - 1351	HBBL-600-10000 Charge:xxxx, 2022-Aug-10	EX3DV4 - SN7374, 2022-08-30	DAE4 Sn640, 2022-08-18

Scans Setup

	Area Scan	Zoom Scan
Grid Extents [mm]	120.0 x 200.0	22.0 x 22.0 x 22.0
Grid Steps [mm]	10.0 x 10.0	4.0 x 4.0 x 1.4
Sensor Surface [mm]	3.0	1.4
Graded Grid	No	Yes
Grading Ratio	n/a	1.4
MAIA	N/A	N/A
Surface Detection	VMS + 6p	VMS + 6p
Scan Method	Measured	Measured

Measurement Results

	Area Scan	Zoom Scan
Date	2022-08-11, 10:15	2022-08-11, 10:36
psSAR1g [W/Kg]	0.889	0.868
psSAR10g [W/Kg]	0.363	0.352
Power Drift [dB]	-0.22	-0.3
Power Scaling	Disabled	Disabled
Scaling Factor [dB]		
TSL Correction	No correction	No correction
M2/M1 [%]		67.8
Dist 3dB Peak [mm]		8.6

