

## Wi-Fi-2.4 GHz

Note: for Wi-Fi 2.4 GHz only worst case plots are reported

**Measurement Report for VSCAN, FRONT, WLAN 2.4GHz, IEEE 802.11b WiFi 2.4 GHz (DSSS, 1 Mbps), Channel 6 (2437.0 MHz)**
**Device Under Test Properties**

Name, Manufacturer	Dimensions [mm]	IMEI	DUT Type
VSCAN, GE	131.0 x 65.0 x 32.0		Phone

**Exposure Conditions**

Phantom Section, TSL	Position, Test Distance [mm]	Band	Group, UID	Frequency [MHz], Channel Number	Conversion Factor	TSL Conductivity [S/m]	TSL Permittivity
Flat, HSL	FRONT, 0.00	WLAN 2.4GHz	WLAN, 10012-CAB	2437.0, 6	7.59	1.77	40.3

**Hardware Setup**

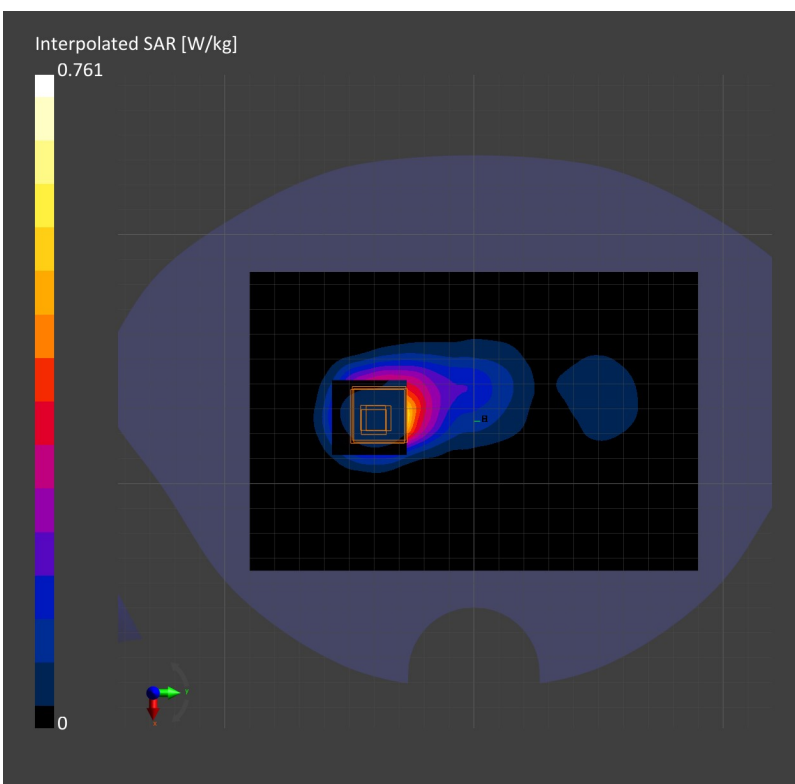
Phantom	TSL, Measured Date	Probe, Calibration Date	DAE, Calibration Date
Twin-SAM V4.0 (30deg probe tilt) - 1351	HBBL-600-10000 Charge:xxxx, 2020-Oct-26	EX3DV4 - SN7374, 2019-10-28	DAE4 Sn640, 2019-10-11

**Scans Setup**

	Area Scan	Zoom Scan
Grid Extents [mm]	120.0 x 180.0	30.0 x 30.0 x 30.0
Grid Steps [mm]	15.0 x 15.0	6.0 x 6.0 x 5.0
Sensor Surface [mm]	3.0	1.4
Graded Grid	No	No
Grading Ratio	n/a	n/a
MAIA	N/A	N/A
Surface Detection	VMS + 6p	VMS + 6p
Scan Method	Measured	Measured

**Measurement Results**

	Area Scan	Zoom Scan
Date	2020-10-26, 10:06	2020-10-26, 10:11
psSAR1g [W/Kg]	0.337	0.329
psSAR10g [W/Kg]	0.162	0.147
Power Drift [dB]	-0.01	-0.06
Power Scaling	Disabled	Disabled
Scaling Factor [dB]		
TSL Correction	No correction	No correction
M2/M1 [%]		39.5
TDist 3dB Peak [mm]		9.1



**Measurement Report for VSCAN, EDGE TOP, WLAN 2.4GHz, IEEE 802.11b WIFI 2.4 GHz (DSSS, 1 Mbps), Channel 6 (2437.0 MHz)**

**Device Under Test Properties**

Name, Manufacturer	Dimensions [mm]	IMEI	DUT Type
VSCAN, GE	131.0 x 65.0 x 32.0		Phone

**Exposure Conditions**

Phantom Section, TSL	Position, Test Distance [mm]	Band	Group, UID	Frequency [MHz], Channel Number	Conversion Factor	TSL Conductivity [S/m]	TSL Permittivity
Flat, HSL	EDGE TOP, 0.00	WLAN 2.4GHz	WLAN, 10012-CAB	2437.0, 6	7.59	1.77	40.3

**Hardware Setup**

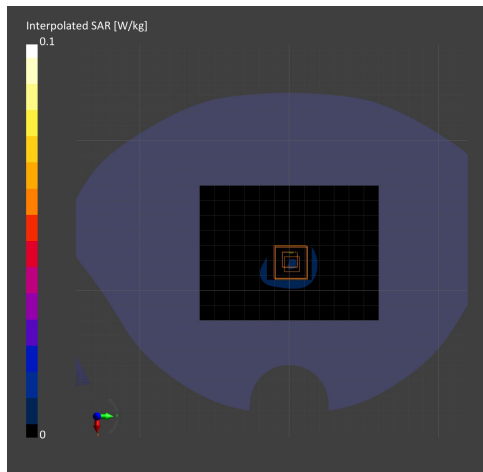
Phantom	TSL, Measured Date	Probe, Calibration Date	DAE, Calibration Date
Twin-SAM V4.0 (30deg probe tilt) - 1351	H88L-600-10000 Charge:xxxx, 2020-Oct-26	EX3DV4 - SN7374, 2019-10-28	DAE4 Sn640, 2019-10-11

**Scans Setup**

	Area Scan	Zoom Scan
Grid Extents [mm]	90.0 x 120.0	30.0 x 30.0 x 30.0
Grid Steps [mm]	15.0 x 15.0	6.0 x 6.0 x 5.0
Sensor Surface [mm]	3.0	1.4
Graded Grid	No	No
Grading Ratio	n/a	n/a
MAIA	N/A	N/A
Surface Detection	VMS + 6p	VMS + 6p
Scan Method	Measured	Measured

**Measurement Results**

	Area Scan
Date	2020-10-26, 10:34
psSAR1g [W/Kg]	0.019
psSAR10g [W/Kg]	0.008
Power Drift [dB]	0.16
Power Scaling	Disabled
Scaling Factor [dB]	
TSL Correction	No correction
M2/M1 [%]	-1797693134862315708145274237317043567980705675284499659891747680315726078002853876051
TDist 3dB Peak [mm]	



**Measurement Report for VSCAN, EDGE BOTTOM, WLAN 2.4GHz, IEEE 802.11b WIFI 2.4 GHz (DSSS, 1 Mbps), Channel 6 (2437.0 MHz)**

**Device Under Test Properties**

Name, Manufacturer	Dimensions [mm]	IMEI	DUT Type
VSCAN, GE	131.0 x 65.0 x 32.0		Phone

**Exposure Conditions**

Phantom Section, TSL	Position, Test Distance [mm]	Band	Group, UID	Frequency [MHz], Channel Number	Conversion Factor	TSL Conductivity [S/m]	TSL Permittivity
Flat, HSL	EDGE BOTTOM, 0.00	WLAN 2.4GHz	WLAN, 10012-CAB	2437.0, 6	7.59	1.77	40.3

**Hardware Setup**

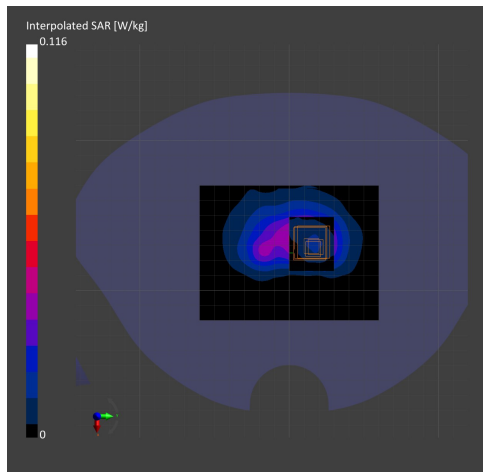
Phantom	TSL, Measured Date	Probe, Calibration Date	DAE, Calibration Date
Twin-SAM V4.0 (30deg probe tilt) - 1351	H88L-600-10000 Charge:xxxx, 2020-Oct-26	EX3DV4 - SN7374, 2019-10-28	DAE4 Sn640, 2019-10-11

**Scans Setup**

	Area Scan	Zoom Scan
Grid Extents [mm]	90.0 x 120.0	30.0 x 30.0 x 30.0
Grid Steps [mm]	15.0 x 15.0	6.0 x 6.0 x 5.0
Sensor Surface [mm]	3.0	1.4
Graded Grid	No	No
Grading Ratio	n/a	n/a
MAIA	N/A	N/A
Surface Detection	VMS + 6p	VMS + 6p
Scan Method	Measured	Measured

**Measurement Results**

	Area Scan
Date	2020-10-26, 10:42
psSAR1g [W/Kg]	0.052
psSAR10g [W/Kg]	0.024
Power Drift [dB]	-0.06
Power Scaling	Disabled
Scaling Factor [dB]	
TSL Correction	No correction
M2/M1 [%]	-17976931348623157081452742373170435679807056752584499659891747680315726078002853876051
TDist 3dB Peak [mm]	



**Measurement Report for VSCAN, FRONT, WLAN 2.4GHz, IEEE 802.11b WiFi 2.4 GHz (DSSS, 1 Mbps), Channel 1 (2412.0 MHz)**

**Device Under Test Properties**

Name, Manufacturer	Dimensions [mm]	IMEI	DUT Type
VSCAN, GE	131.0 x 65.0 x 32.0		Phone

**Exposure Conditions**

Phantom Section, TSL	Position, Test Distance [mm]	Band	Group, UID	Frequency [MHz], Channel Number	Conversion Factor	TSL Conductivity [S/m]	TSL Permittivity
Flat, HSL	FRONT, 0.00	WLAN 2.4GHz	WLAN, 10012-CAB	2412.0, 1	7.59	1.77	40.3

**Hardware Setup**

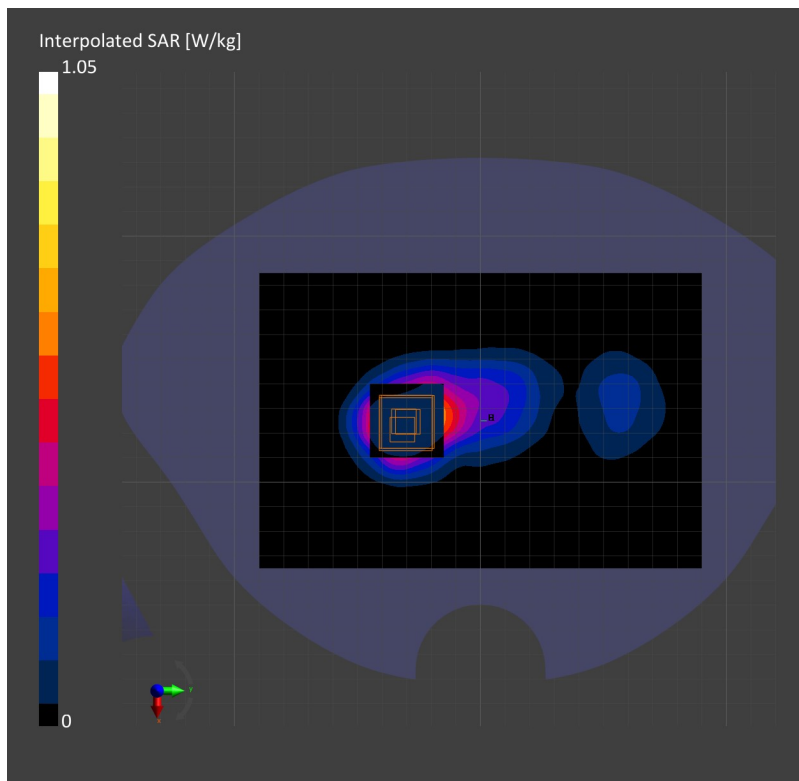
Phantom	TSL, Measured Date	Probe, Calibration Date	DAE, Calibration Date
Twin-SAM V4.0 (30deg probe tilt) - 1351	HBBL-600-10000 Charge:xxxx, 2020-Oct-26	EX3DV4 - SN7374, 2019-10-28	DAE4 Sn640, 2019-10-11

**Scans Setup**

	Area Scan	Zoom Scan
Grid Extents [mm]	120.0 x 180.0	30.0 x 30.0 x 30.0
Grid Steps [mm]	15.0 x 15.0	6.0 x 6.0 x 5.0
Sensor Surface [mm]	3.0	1.4
Graded Grid	No	No
Grading Ratio	n/a	n/a
MAIA	N/A	N/A
Surface Detection	VMS + 6p	VMS + 6p
Scan Method	Measured	Measured

**Measurement Results**

	Area Scan	Zoom Scan
Date	2020-10-26, 09:36	2020-10-26, 09:41
psSAR1g [W/Kg]	0.398	0.463
psSAR10g [W/Kg]	0.193	0.210
Power Drift [dB]	0.04	0.06
Power Scaling	Disabled	Disabled
Scaling Factor [dB]		
TSL Correction	No correction	No correction
M2/M1 [%]		40.2
TDist 3dB Peak [mm]		10.2



# Wi-Fi\_5GHz - UNII-1

## Measurement Report for VSCAN, FRONT, WLAN 5GHz, IEEE 802.11a/h WiFi 5 GHz (OFDM, 6 Mbps), Channel 36 (5180.0 MHz)

### Device Under Test Properties

Name, Manufacturer	Dimensions [mm]	IMEI	DUT Type
VSCAN, GE	131.0 x 65.0 x 32.0		Phone

### Exposure Conditions

Phantom Section, TSL	Position, Test Distance [mm]	Band	Group, UID	Frequency [MHz], Channel Number	Conversion Factor	TSL Conductivity [S/m]	TSL Permittivity
Flat, HSL	FRONT, 0.00	WLAN 5GHz	WLAN, 10062-CAC	5180.0, 36	5.35	4.51	36.3

### Hardware Setup

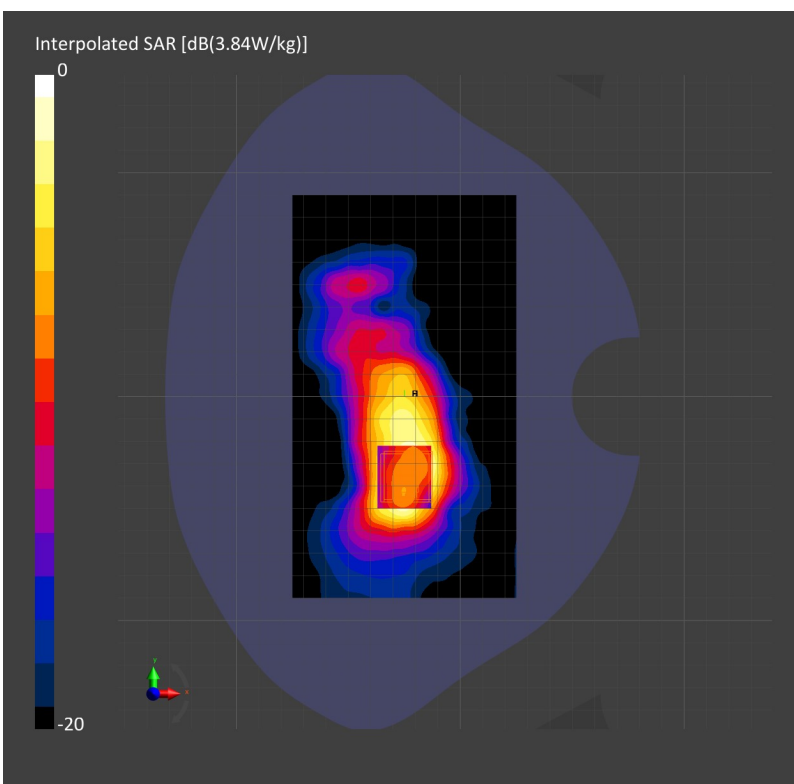
Phantom	TSL, Measured Date	Probe, Calibration Date	DAE, Calibration Date
Twin-SAM V4.0 (30deg probe tilt) - 1351	HBBL-600-10000 Charge:xxxx, 2020-Oct-27	EX3DV4 - SN7374, 2019-10-28	DAE4 Sn640, 2019-10-11

### Scans Setup

	Area Scan	Zoom Scan
Grid Extents [mm]	100.0 x 180.0	22.0 x 22.0 x 22.0
Grid Steps [mm]	10.0 x 10.0	4.0 x 4.0 x 1.4
Sensor Surface [mm]	3.0	1.4
Graded Grid	No	Yes
Grading Ratio	n/a	1.4
MAIA	N/A	N/A
Surface Detection	Mother Scan	6-point verification
Scan Method	Measured	Measured

### Measurement Results

	Area Scan	Zoom Scan
Date	2020-10-27, 09:07	2020-10-27, 09:14
psSAR1g [W/Kg]	1.31	1.11
psSAR10g [W/Kg]	0.495	0.437
Power Drift [dB]	-0.01	-0.01
Power Scaling	Disabled	Disabled
Scaling Factor [dB]		
TSL Correction	No correction	No correction
M2/M1 [%]		
TDist 3dB Peak [mm]		



**Measurement Report for VSCAN, EDGE TOP, WLAN 5GHz, IEEE 802.11a/h WiFi 5 GHz (OFDM, 6 Mbps), Channel 36 (5180.0 MHz)**

**Device Under Test Properties**

Name, Manufacturer	Dimensions [mm]	IMEI	DUT Type
VSCAN, GE	131.0 x 65.0 x 32.0		Phone

**Exposure Conditions**

Phantom Section, TSL	Position, Test Distance [mm]	Band	Group, UID	Frequency [MHz], Channel Number	Conversion Factor	TSL Conductivity [S/m]	TSL Permittivity
Flat, HSL	EDGE TOP, 0.00	WLAN 5GHz	WLAN, 10062-CAC	5180.0, 36	5.35	4.51	36.3

**Hardware Setup**

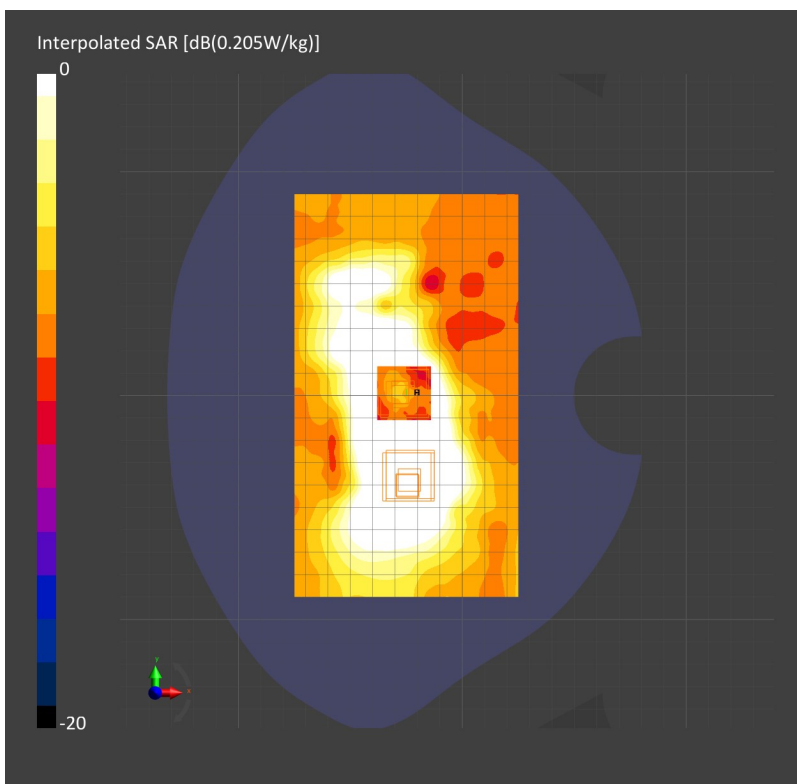
Phantom	TSL, Measured Date	Probe, Calibration Date	DAE, Calibration Date
Twin-SAM V4.0 (30deg probe tilt) - 1351	HBBL-600-10000 Charge:xxxx, 2020-Oct-27	EX3DV4 - SN7374, 2019-10-28	DAE4 Sn640, 2019-10-11

**Scans Setup**

	Area Scan	Zoom Scan
Grid Extents [mm]	80.0 x 100.0	22.0 x 22.0 x 22.0
Grid Steps [mm]	10.0 x 10.0	4.0 x 4.0 x 1.4
Sensor Surface [mm]	3.0	1.4
Graded Grid	No	Yes
Grading Ratio	n/a	1.4
MAIA	N/A	N/A
Surface Detection	Mother Scan	6-point verification
Scan Method	Measured	Measured

**Measurement Results**

	Area Scan	Zoom Scan
Date	2020-10-27, 09:15	2020-10-27, 09:21
psSAR1g [W/Kg]	0.069	0.069
psSAR10g [W/Kg]	0.026	0.032
Power Drift [dB]	-0.11	-0.23
Power Scaling	Disabled	Disabled
Scaling Factor [dB]		
TSL Correction	No correction	No correction
M2/M1 [%]		
TDist 3dB Peak [mm]		



**Measurement Report for VSCAN, EDGE BOTTOM, WLAN 5GHz, IEEE 802.11a/h WiFi 5 GHz (OFDM, 6 Mbps), Channel 36 (5180.0 MHz)**

**Device Under Test Properties**

Name, Manufacturer	Dimensions [mm]	IMEI	DUT Type
VSCAN, GE	131.0 x 65.0 x 32.0		Phone

**Exposure Conditions**

Phantom Section, TSL	Position, Test Distance [mm]	Band	Group, UID	Frequency [MHz], Channel Number	Conversion Factor	TSL Conductivity [S/m]	TSL Permittivity
Flat, HSL	EDGE BOTTOM, 0.00	WLAN 5GHz	WLAN, 10062-CAC	5180.0, 36	5.35	4.51	36.3

**Hardware Setup**

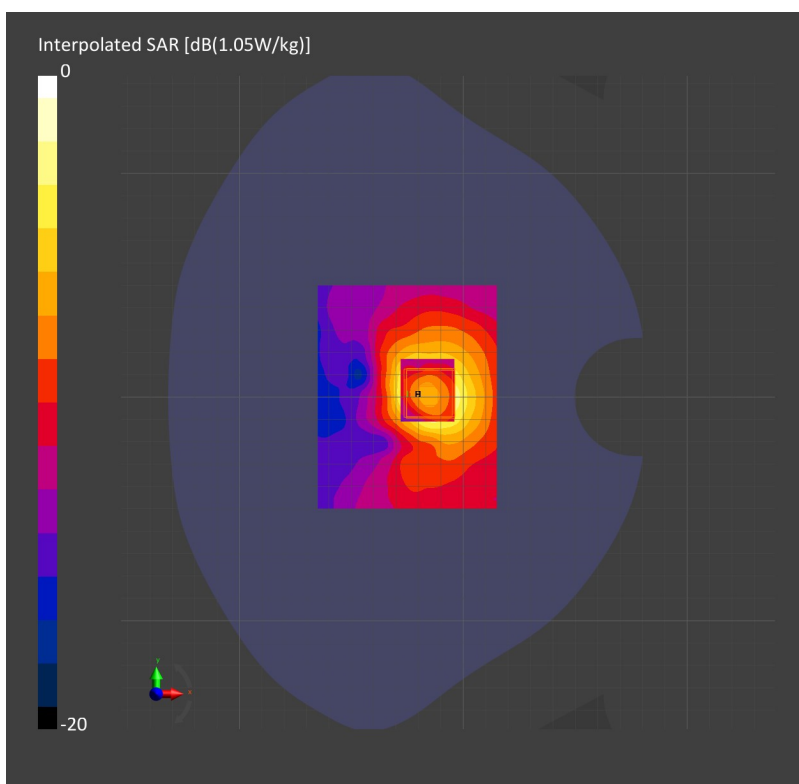
Phantom	TSL, Measured Date	Probe, Calibration Date	DAE, Calibration Date
Twin-SAM V4.0 (30deg probe tilt) - 1351	HBBL-600-10000 Charge:xxxx, 2020-Oct-27	EX3DV4 - SN7374, 2019-10-28	DAE4 Sn640, 2019-10-11

**Scans Setup**

	Area Scan	Zoom Scan
Grid Extents [mm]	80.0 x 100.0	22.0 x 22.0 x 22.0
Grid Steps [mm]	10.0 x 10.0	4.0 x 4.0 x 1.4
Sensor Surface [mm]	3.0	1.4
Graded Grid	No	Yes
Grading Ratio	n/a	1.4
MAIA	N/A	N/A
Surface Detection	Mother Scan	6-point verification
Scan Method	Measured	Measured

**Measurement Results**

	Area Scan	Zoom Scan
Date	2020-10-27, 09:25	2020-10-27, 09:31
psSAR1g [W/Kg]	0.341	0.326
psSAR10g [W/Kg]	0.121	0.123
Power Drift [dB]	-0.08	-0.07
Power Scaling	Disabled	Disabled
Scaling Factor [dB]		
TSL Correction	No correction	No correction
M2/M1 [%]		
TDist 3dB Peak [mm]		



**Measurement Report for VSCAN, FRONT, WLAN 5GHz, IEEE 802.11a/h WiFi 5 GHz (OFDM, 6 Mbps), Channel 48 (5240.0 MHz)**

**Device Under Test Properties**

Name, Manufacturer	Dimensions [mm]	IMEI	DUT Type
VSCAN, GE	131.0 x 65.0 x 32.0		Phone

**Exposure Conditions**

Phantom Section, TSL	Position, Test Distance [mm]	Band	Group, UID	Frequency [MHz], Channel Number	Conversion Factor	TSL Conductivity [S/m]	TSL Permittivity
Flat, HSL	FRONT, 0.00	WLAN 5GHz	WLAN, 10062-CAC	5240.0, 48	5.35	4.61	36.3

**Hardware Setup**

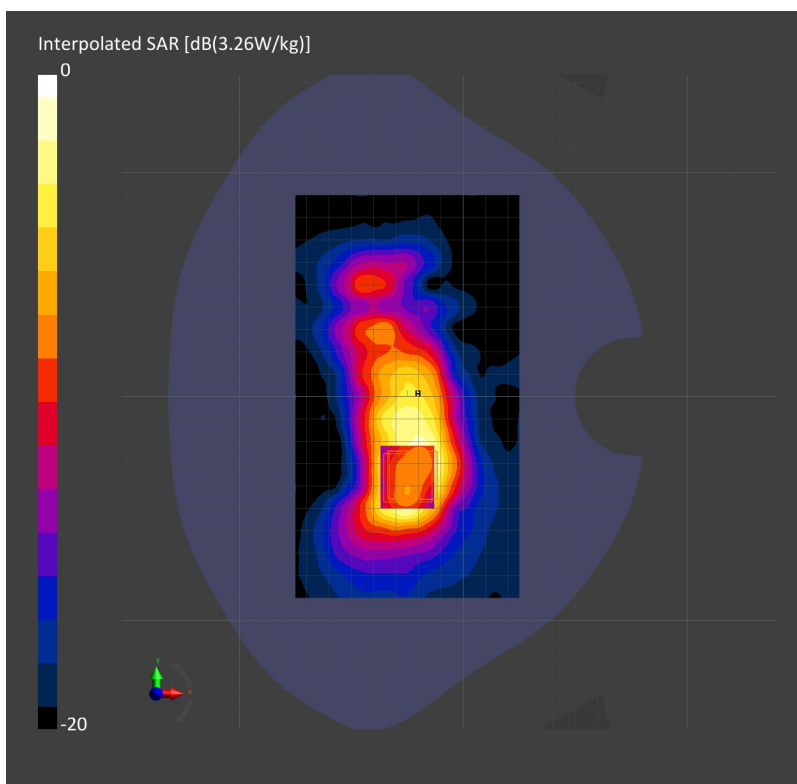
Phantom	TSL, Measured Date	Probe, Calibration Date	DAE, Calibration Date
Twin-SAM V4.0 (30deg probe tilt) - 1351	HBBL-600-10000 Charge:xxxx, 2020-Oct-27	EX3DV4 - SN7374, 2019-10-28	DAE4 Sn640, 2019-10-11

**Scans Setup**

	Area Scan	Zoom Scan
Grid Extents [mm]	100.0 x 180.0	22.0 x 22.0 x 22.0
Grid Steps [mm]	10.0 x 10.0	4.0 x 4.0 x 1.4
Sensor Surface [mm]	3.0	1.4
Graded Grid	No	Yes
Grading Ratio	n/a	1.4
MAIA	N/A	N/A
Surface Detection	Mother Scan	6-point verification
Scan Method	Measured	Measured

**Measurement Results**

	Area Scan	Zoom Scan
Date	2020-10-27, 09:32	2020-10-27, 09:37
psSAR1g [W/Kg]	1.03	0.946
psSAR10g [W/Kg]	0.395	0.377
Power Drift [dB]	-0.08	-0.09
Power Scaling	Disabled	Disabled
Scaling Factor [dB]		
TSL Correction	No correction	No correction
M2/M1 [%]		
TDist 3dB Peak [mm]		





**Measurement Report for VSCAN, FRONT, WLAN 5GHz, IEEE 802.11n (HT Mixed, 39 Mbps, 16-QAM), Channel 36 (5180.0 MHz)**

**Device Under Test Properties**

Name, Manufacturer	Dimensions [mm]	IMEI	DUT Type
VSCAN, GE	131.0 x 65.0 x 32.0		Phone

**Exposure Conditions**

Phantom Section, TSL	Position, Test Distance [mm]	Band	Group, UID	Frequency [MHz], Channel Number	Conversion Factor	TSL Conductivity [S/m]	TSL Permittivity
Flat, HSL	FRONT, 0.00	WLAN 5GHz	WLAN, 10197-CAC	5180.0, 36	5.35	4.51	36.3

**Hardware Setup**

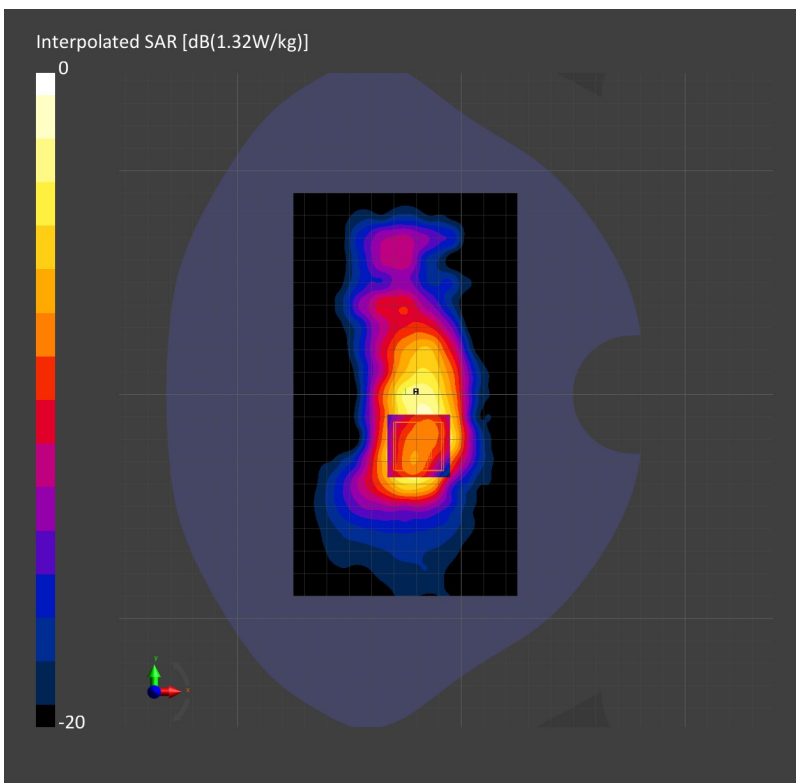
Phantom	TSL, Measured Date	Probe, Calibration Date	DAE, Calibration Date
Twin-SAM V4.0 (30deg probe tilt) - 1351	HBBL-600-10000 Charge:xxxx, 2020-Oct-27	EX3DV4 - SN7374, 2019-10-28	DAE4 Sn640, 2019-10-11

**Scans Setup**

	Area Scan	Zoom Scan
Grid Extents [mm]	100.0 x 180.0	22.0 x 22.0 x 22.0
Grid Steps [mm]	10.0 x 10.0	4.0 x 4.0 x 1.4
Sensor Surface [mm]	3.0	1.4
Graded Grid	No	Yes
Grading Ratio	n/a	1.4
MAIA	N/A	N/A
Surface Detection	Mother Scan	6-point verification
Scan Method	Measured	Measured

**Measurement Results**

	Area Scan	Zoom Scan
Date	2020-10-27, 10:33	2020-10-27, 10:41
psSAR1g [W/Kg]	1.40	1.11
psSAR10g [W/Kg]	0.527	0.429
Power Drift [dB]	-0.05	-0.05
Power Scaling	Disabled	Disabled
Scaling Factor [dB]		
TSL Correction	No correction	No correction
M2/M1 [%]		
TDist 3dB Peak [mm]		



**Measurement Report for VSCAN, FRONT, WLAN 5GHz, IEEE 802.11n (HT Mixed, 39 Mbps, 16-QAM), Channel 48 (5240.0 MHz)**

**Device Under Test Properties**

Name, Manufacturer	Dimensions [mm]	IMEI	DUT Type
VSCAN, GE	131.0 x 65.0 x 32.0		Phone

**Exposure Conditions**

Phantom Section, TSL	Position, Test Distance [mm]	Band	Group, UID	Frequency [MHz], Channel Number	Conversion Factor	TSL Conductivity [S/m]	TSL Permittivity
Flat, HSL	FRONT, 0.00	WLAN 5GHz	WLAN, 10197-CAC	5240.0, 48	5.35	4.61	36.3

**Hardware Setup**

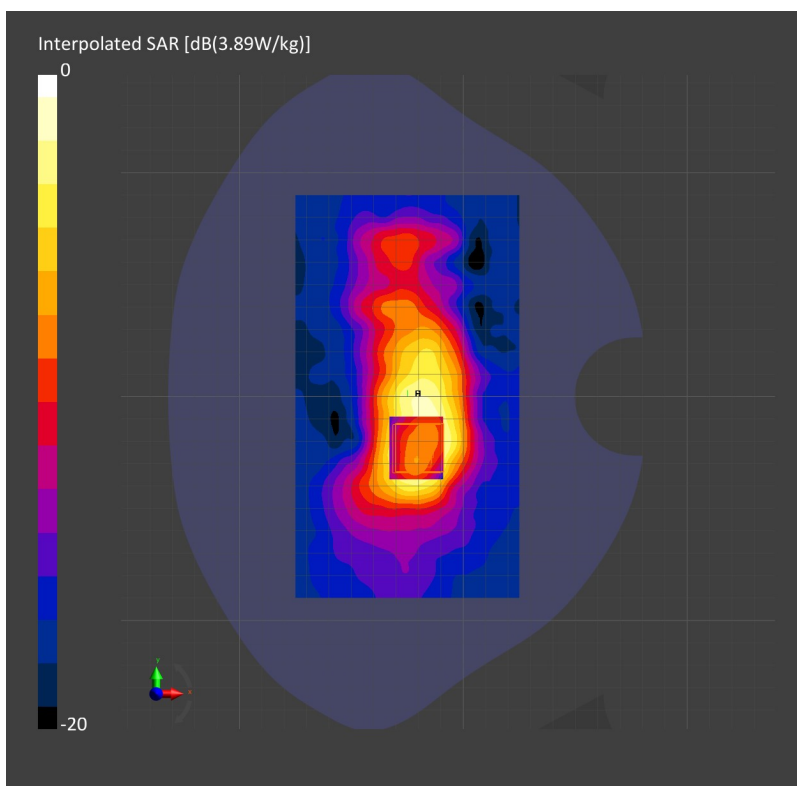
Phantom	TSL, Measured Date	Probe, Calibration Date	DAE, Calibration Date
Twin-SAM V4.0 (30deg probe tilt) - 1351	HBBL-600-10000 Charge:xxxx, 2020-Oct-27	EX3DV4 - SN7374, 2019-10-28	DAE4 Sn640, 2019-10-11

**Scans Setup**

	Area Scan	Zoom Scan
Grid Extents [mm]	100.0 x 180.0	22.0 x 22.0 x 22.0
Grid Steps [mm]	10.0 x 10.0	4.0 x 4.0 x 1.4
Sensor Surface [mm]	3.0	1.4
Graded Grid	No	Yes
Grading Ratio	n/a	1.4
MAIA	N/A	N/A
Surface Detection	Mother Scan	6-point verification
Scan Method	Measured	Measured

**Measurement Results**

	Area Scan	Zoom Scan
Date	2020-10-27, 11:05	2020-10-27, 11:10
psSAR1g [W/Kg]	1.44	1.12
psSAR10g [W/Kg]	0.538	0.429
Power Drift [dB]	-0.07	-0.06
Power Scaling	Disabled	Disabled
Scaling Factor [dB]		
TSL Correction	No correction	No correction
M2/M1 [%]		
TDist 3dB Peak [mm]		



**Measurement Report for VSCAN, EDGE TOP, WLAN 5GHz, IEEE 802.11n (HT Mixed, 39 Mbps, 16-QAM), Channel 48 (5240.0 MHz)**

**Device Under Test Properties**

Name, Manufacturer	Dimensions [mm]	IMEI	DUT Type
VSCAN, GE	131.0 x 65.0 x 32.0		Phone

**Exposure Conditions**

Phantom Section, TSL	Position, Test Distance [mm]	Band	Group, UID	Frequency [MHz], Channel Number	Conversion Factor	TSL Conductivity [S/m]	TSL Permittivity
Flat, HSL	EDGE TOP, 0.00	WLAN 5GHz	WLAN, 10197-CAC	5240.0, 48	5.35	4.61	36.3

**Hardware Setup**

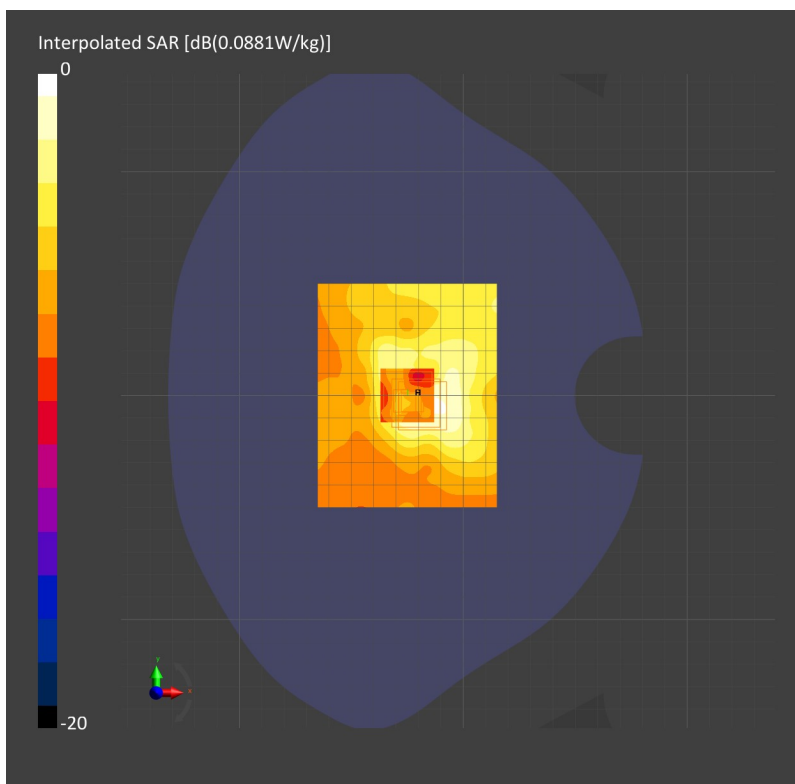
Phantom	TSL, Measured Date	Probe, Calibration Date	DAE, Calibration Date
Twin-SAM V4.0 (30deg probe tilt) - 1351	HBBL-600-10000 Charge:xxxx, 2020-Oct-27	EX3DV4 - SN7374, 2019-10-28	DAE4 Sn640, 2019-10-11

**Scans Setup**

	Area Scan	Zoom Scan
Grid Extents [mm]	80.0 x 100.0	22.0 x 22.0 x 22.0
Grid Steps [mm]	10.0 x 10.0	4.0 x 4.0 x 1.4
Sensor Surface [mm]	3.0	1.4
Graded Grid	No	Yes
Grading Ratio	n/a	1.4
MAIA	N/A	N/A
Surface Detection	Mother Scan	All points
Scan Method	Measured	Measured

**Measurement Results**

	Area Scan	Zoom Scan
Date	2020-10-27, 11:12	2020-10-27, 11:17
psSAR1g [W/Kg]	0.072	0.054
psSAR10g [W/Kg]	0.029	0.028
Power Drift [dB]	-0.12	0.15
Power Scaling	Disabled	Disabled
Scaling Factor [dB]		
TSL Correction	No correction	No correction
M2/M1 [%]		
TDist 3dB Peak [mm]		



**Measurement Report for VSCAN, EDGE BOTTOM, WLAN 5GHz, IEEE 802.11n (HT Mixed, 39 Mbps, 16-QAM), Channel 48 (5240.0 MHz)**

**Device Under Test Properties**

Name, Manufacturer	Dimensions [mm]	IMEI	DUT Type
VSCAN, GE	131.0 x 65.0 x 32.0		Phone

**Exposure Conditions**

Phantom Section, TSL	Position, Test Distance [mm]	Band	Group, UID	Frequency [MHz], Channel Number	Conversion Factor	TSL Conductivity [S/m]	TSL Permittivity
Flat, HSL	EDGE BOTTOM, 0.00	WLAN 5GHz	WLAN, 10197-CAC	5240.0, 48	5.35	4.61	36.3

**Hardware Setup**

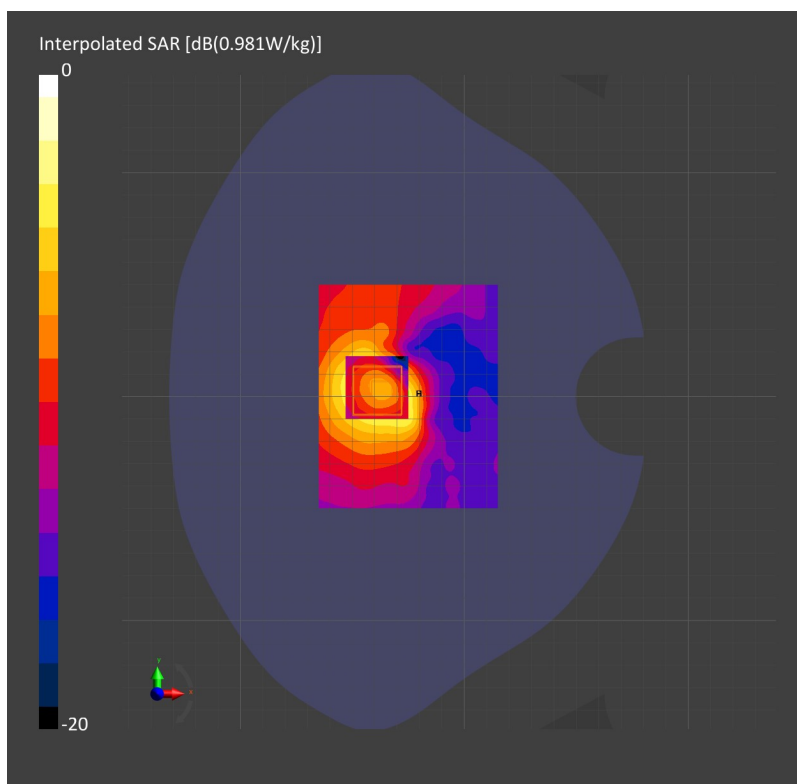
Phantom	TSL, Measured Date	Probe, Calibration Date	DAE, Calibration Date
Twin-SAM V4.0 (30deg probe tilt) - 1351	HBBL-600-10000 Charge:xxxx, 2020-Oct-27	EX3DV4 - SN7374, 2019-10-28	DAE4 Sn640, 2019-10-11

**Scans Setup**

	Area Scan	Zoom Scan
Grid Extents [mm]	80.0 x 100.0	22.0 x 22.0 x 22.0
Grid Steps [mm]	10.0 x 10.0	4.0 x 4.0 x 1.4
Sensor Surface [mm]	3.0	1.4
Graded Grid	No	Yes
Grading Ratio	n/a	1.4
MAIA	N/A	N/A
Surface Detection	Mother Scan	6-point verification
Scan Method	Measured	Measured

**Measurement Results**

	Area Scan	Zoom Scan
Date	2020-10-27, 11:20	2020-10-27, 11:25
psSAR1g [W/Kg]	0.340	0.306
psSAR10g [W/Kg]	0.123	0.115
Power Drift [dB]	-0.01	-0.07
Power Scaling	Disabled	Disabled
Scaling Factor [dB]		
TSL Correction	No correction	No correction
M2/M1 [%]		
TDist 3dB Peak [mm]		



**Measurement Report for VSCAN, FRONT, WLAN 5GHz, IEEE 802.11n (HT Mixed, 81 Mbps, 16-QAM), Channel 38 (5190.0 MHz)**

**Device Under Test Properties**

Name, Manufacturer	Dimensions [mm]	IMEI	DUT Type
VSCAN, GE	131.0 x 65.0 x 32.0		Phone

**Exposure Conditions**

Phantom Section, TSL	Position, Test Distance [mm]	Band	Group, UID	Frequency [MHz], Channel Number	Conversion Factor	TSL Conductivity [S/m]	TSL Permittivity
Flat, HSL	FRONT, 0.00	WLAN 5GHz	WLAN, 10118-CAC	5190.0, 38	5.35	4.52	36.3

**Hardware Setup**

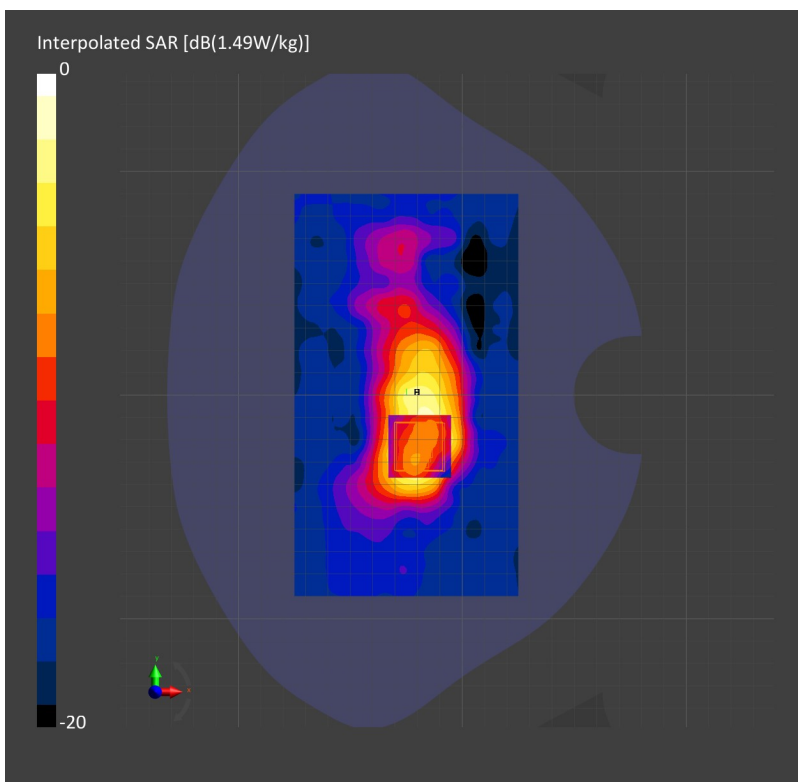
Phantom	TSL, Measured Date	Probe, Calibration Date	DAE, Calibration Date
Twin-SAM V4.0 (30deg probe tilt) - 1351	HBBL-600-10000 Charge:xxxx, 2020-Oct-27	EX3DV4 - SN7374, 2019-10-28	DAE4 Sn640, 2019-10-11

**Scans Setup**

	Area Scan	Zoom Scan
Grid Extents [mm]	100.0 x 180.0	22.0 x 22.0 x 22.0
Grid Steps [mm]	10.0 x 10.0	4.0 x 4.0 x 1.4
Sensor Surface [mm]	3.0	1.4
Graded Grid	No	Yes
Grading Ratio	n/a	1.4
MAIA	N/A	N/A
Surface Detection	Mother Scan	6-point verification
Scan Method	Measured	Measured

**Measurement Results**

	Area Scan	Zoom Scan
Date	2020-10-27, 11:45	2020-10-27, 11:50
psSAR1g [W/Kg]	0.538	0.434
psSAR10g [W/Kg]	0.202	0.169
Power Drift [dB]	-0.07	-0.07
Power Scaling	Disabled	Disabled
Scaling Factor [dB]		
TSL Correction	No correction	No correction
M2/M1 [%]		
TDist 3dB Peak [mm]		



**Measurement Report for VSCAN, EDGE BOTTOM, WLAN 5GHz, IEEE 802.11n (HT Mixed, 81 Mbps, 16-QAM), Channel 38 (5190.0 MHz)**

**Device Under Test Properties**

Name, Manufacturer	Dimensions [mm]	IMEI	DUT Type
VSCAN, GE	131.0 x 65.0 x 32.0		Phone

**Exposure Conditions**

Phantom Section, TSL	Position, Test Distance [mm]	Band	Group, UID	Frequency [MHz], Channel Number	Conversion Factor	TSL Conductivity [S/m]	TSL Permittivity
Flat, HSL	EDGE BOTTOM, 0.00	WLAN 5GHz	WLAN, 10118-CAC	5190.0, 38	5.35	4.52	36.3

**Hardware Setup**

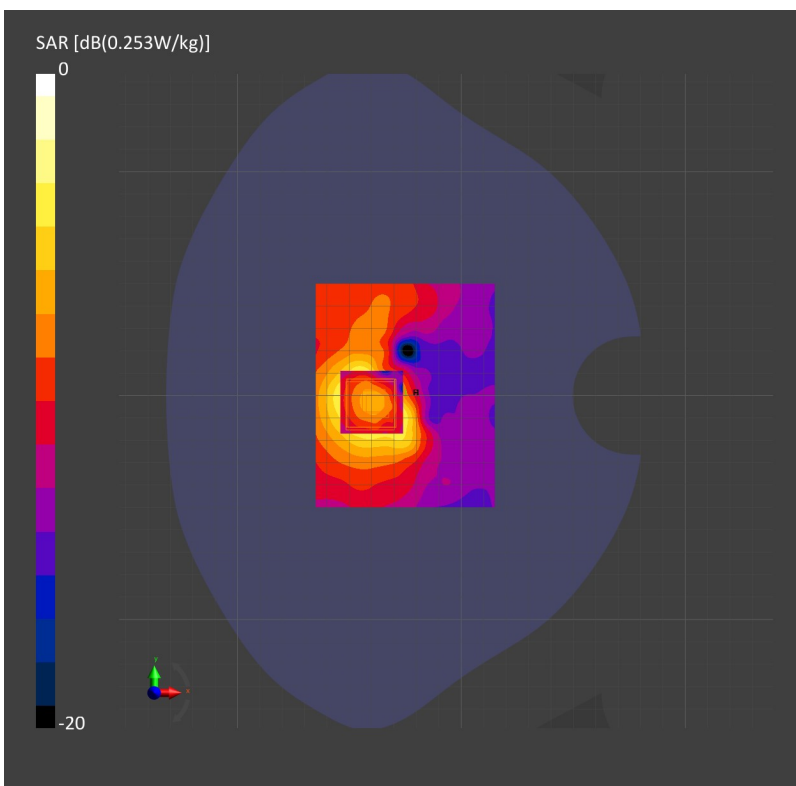
Phantom	TSL, Measured Date	Probe, Calibration Date	DAE, Calibration Date
Twin-SAM V4.0 (30deg probe tilt) - 1351	HBBL-600-10000 Charge:xxxx, 2020-Oct-27	EX3DV4 - SN7374, 2019-10-28	DAE4 Sn640, 2019-10-11

**Scans Setup**

	Area Scan	Zoom Scan
Grid Extents [mm]	80.0 x 100.0	22.0 x 22.0 x 22.0
Grid Steps [mm]	10.0 x 10.0	4.0 x 4.0 x 1.4
Sensor Surface [mm]	3.0	1.4
Graded Grid	No	Yes
Grading Ratio	n/a	1.4
MAIA	N/A	N/A
Surface Detection	Mother Scan	6-point verification
Scan Method	Measured	Measured

**Measurement Results**

	Area Scan	Zoom Scan
Date	2020-10-27, 11:58	2020-10-27, 12:04
psSAR1g [W/Kg]	0.249	0.211
psSAR10g [W/Kg]	0.090	0.082
Power Drift [dB]	-0.06	-0.10
Power Scaling	Disabled	Disabled
Scaling Factor [dB]		
TSL Correction	No correction	No correction
M2/M1 [%]		
TDist 3dB Peak [mm]		



**Measurement Report for VSCAN, FRONT, WLAN 5GHz, IEEE 802.11n (HT Mixed, 81 Mbps, 16-QAM), Channel 46 (5230.0 MHz)**

**Device Under Test Properties**

Name, Manufacturer	Dimensions [mm]	IMEI	DUT Type
VSCAN, GE	131.0 x 65.0 x 32.0		Phone

**Exposure Conditions**

Phantom Section, TSL	Position, Test Distance [mm]	Band	Group, UID	Frequency [MHz], Channel Number	Conversion Factor	TSL Conductivity [S/m]	TSL Permittivity
Flat, HSL	FRONT, 0.00	WLAN 5GHz	WLAN, 10118-CAC	5230.0, 46	5.35	4.56	36.2

**Hardware Setup**

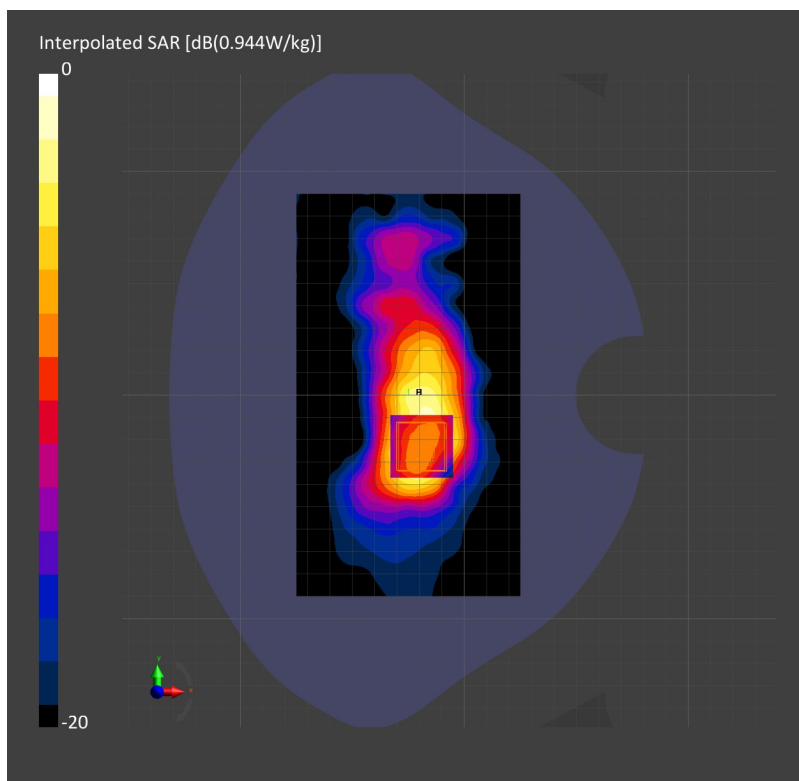
Phantom	TSL, Measured Date	Probe, Calibration Date	DAE, Calibration Date
Twin-SAM V4.0 (30deg probe tilt) - 1351	HBBL-600-10000 Charge:xxxx, 2020-Oct-27	EX3DV4 - SN7374, 2019-10-28	DAE4 Sn640, 2019-10-11

**Scans Setup**

	Area Scan	Zoom Scan
Grid Extents [mm]	100.0 x 180.0	22.0 x 22.0 x 22.0
Grid Steps [mm]	10.0 x 10.0	4.0 x 4.0 x 1.4
Sensor Surface [mm]	3.0	1.4
Graded Grid	No	Yes
Grading Ratio	n/a	1.4
MAIA	N/A	N/A
Surface Detection	Mother Scan	6-point verification
Scan Method	Measured	Measured

**Measurement Results**

	Area Scan	Zoom Scan
Date	2020-10-27, 12:15	2020-10-27, 12:23
psSAR1g [W/Kg]	0.987	0.773
psSAR10g [W/Kg]	0.369	0.299
Power Drift [dB]	-0.07	-0.09
Power Scaling	Disabled	Disabled
Scaling Factor [dB]		
TSL Correction	No correction	No correction
M2/M1 [%]		
TDist 3dB Peak [mm]		



**Measurement Report for VSCAN, EDGE TOP, WLAN 5GHz, IEEE 802.11n (HT Mixed, 81 Mbps, 16-QAM), Channel 46 (5230.0 MHz)**

**Device Under Test Properties**

Name, Manufacturer	Dimensions [mm]	IMEI	DUT Type
VSCAN, GE	131.0 x 65.0 x 32.0		Phone

**Exposure Conditions**

Phantom Section, TSL	Position, Test Distance [mm]	Band	Group, UID	Frequency [MHz], Channel Number	Conversion Factor	TSL Conductivity [S/m]	TSL Permittivity
Flat, HSL	EDGE TOP, 0.00	WLAN 5GHz	WLAN, 10118-CAC	5230.0, 46	5.35	4.56	36.2

**Hardware Setup**

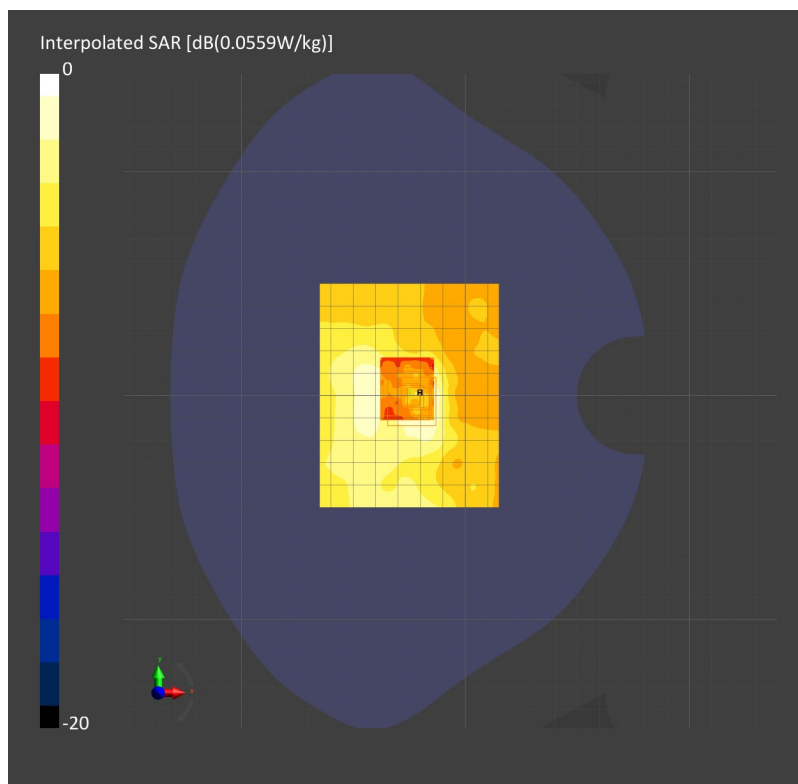
Phantom	TSL, Measured Date	Probe, Calibration Date	DAE, Calibration Date
Twin-SAM V4.0 (30deg probe tilt) - 1351	HBBL-600-10000 Charge:xxxx, 2020-Oct-27	EX3DV4 - SN7374, 2019-10-28	DAE4 Sn640, 2019-10-11

**Scans Setup**

	Area Scan	Zoom Scan
Grid Extents [mm]	80.0 x 100.0	22.0 x 22.0 x 22.0
Grid Steps [mm]	10.0 x 10.0	4.0 x 4.0 x 1.4
Sensor Surface [mm]	3.0	1.4
Graded Grid	No	Yes
Grading Ratio	n/a	1.4
MAIA	N/A	N/A
Surface Detection	Mother Scan	6-point verification
Scan Method	Measured	Measured

**Measurement Results**

	Area Scan	Zoom Scan
Date	2020-10-27, 12:27	2020-10-27, 12:34
psSAR1g [W/Kg]	0.047	0.046
psSAR10g [W/Kg]	0.019	0.026
Power Drift [dB]	0.09	-0.15
Power Scaling	Disabled	Disabled
Scaling Factor [dB]		
TSL Correction	No correction	No correction
M2/M1 [%]		
TDist 3dB Peak [mm]		





# Wi-Fi 5 GHz - UNII-3

## Measurement Report for VSCAN, FRONT, WLAN 5GHz, IEEE 802.11a/h WiFi 5 GHz (OFDM, 6 Mbps), Channel 149 (5745.0 MHz)

### Device Under Test Properties

Name, Manufacturer	Dimensions [mm]	IMEI	DUT Type
VSCAN, GE	131.0 x 65.0 x 32.0		Phone

### Exposure Conditions

Phantom Section, TSL	Position, Test Distance [mm]	Band	Group, UID	Frequency [MHz], Channel Number	Conversion Factor	TSL Conductivity [S/m]	TSL Permittivity
Flat, HSL	FRONT, 0.00	WLAN 5GHz	WLAN, 10062-CAC	5745.0, 149	4.69	5.17	35.2

### Hardware Setup

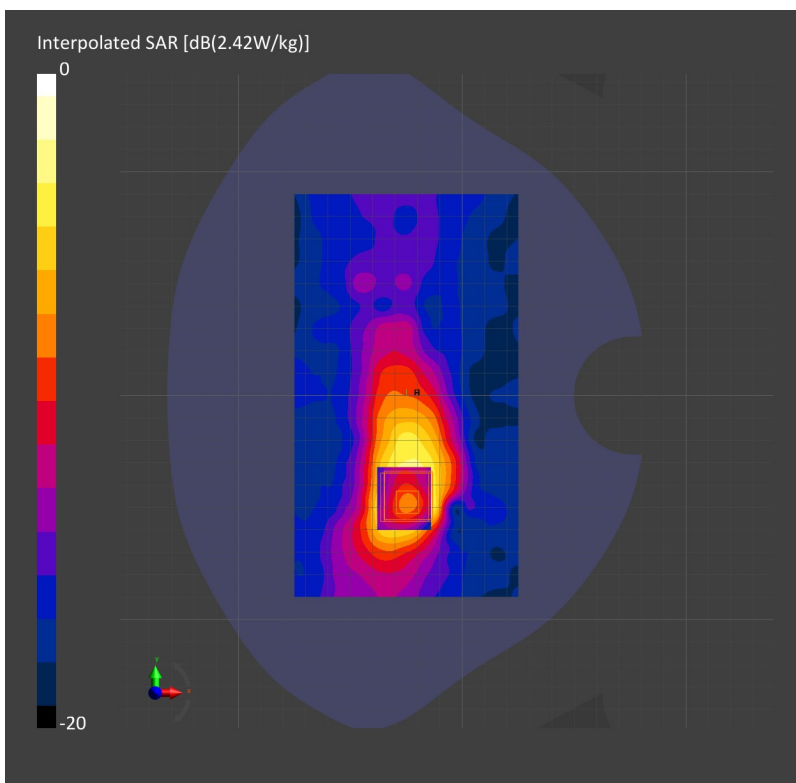
Phantom	TSL, Measured Date	Probe, Calibration Date	DAE, Calibration Date
Twin-SAM V4.0 (30deg probe tilt) - 1351	HBBL-600-10000 Charge:xxxx, 2020-Oct-27	EX3DV4 - SN7374, 2019-10-28	DAE4 Sn640, 2019-10-11

### Scans Setup

	Area Scan	Zoom Scan
Grid Extents [mm]	100.0 x 180.0	22.0 x 22.0 x 22.0
Grid Steps [mm]	10.0 x 10.0	4.0 x 4.0 x 1.4
Sensor Surface [mm]	3.0	1.4
Graded Grid	No	Yes
Grading Ratio	n/a	1.4
MAIA	N/A	N/A
Surface Detection	Mother Scan	All points
Scan Method	Measured	Measured

### Measurement Results

	Area Scan	Zoom Scan
Date	2020-10-27, 13:00	2020-10-27, 13:05
psSAR1g [W/Kg]	0.617	0.618
psSAR10g [W/Kg]	0.209	0.209
Power Drift [dB]	0.00	0.00
Power Scaling	Disabled	Disabled
Scaling Factor [dB]		
TSL Correction	No correction	No correction
M2/M1 [%]		
TDist 3dB Peak [mm]		



**Measurement Report for VSCAN, FRONT, WLAN 5GHz, IEEE 802.11a/h WiFi 5 GHz (OFDM, 6 Mbps), Channel 165 (5825.0 MHz)**

**Device Under Test Properties**

Name, Manufacturer	Dimensions [mm]	IMEI	DUT Type
VSCAN, GE	131.0 x 65.0 x 32.0		Phone

**Exposure Conditions**

Phantom Section, TSL	Position, Test Distance [mm]	Band	Group, UID	Frequency [MHz], Channel Number	Conversion Factor	TSL Conductivity [S/m]	TSL Permittivity
Flat, HSL	FRONT, 0.00	WLAN 5GHz	WLAN, 10062-CAC	5825.0, 165	4.69	5.28	35.2

**Hardware Setup**

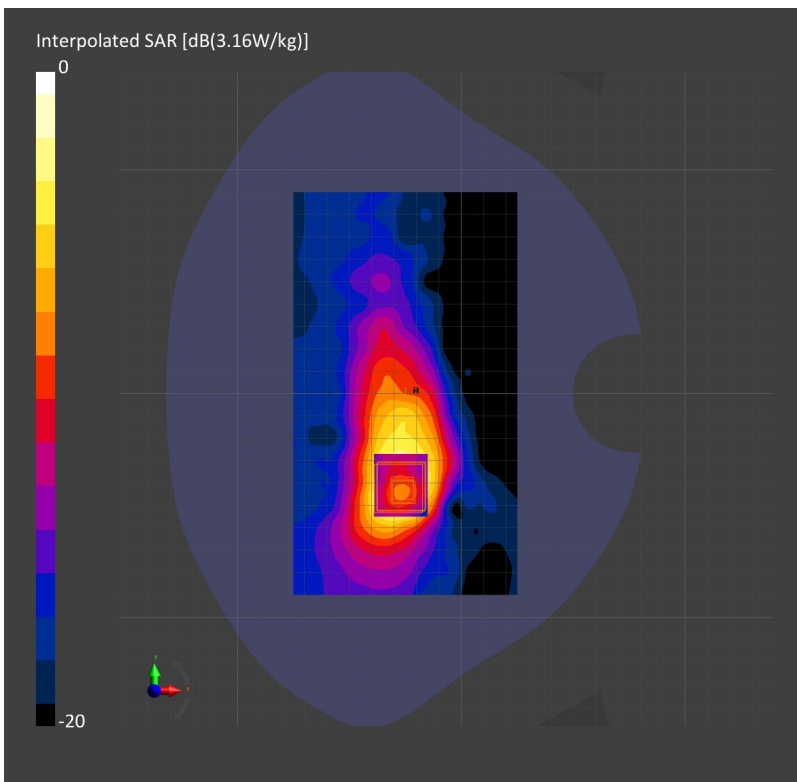
Phantom	TSL, Measured Date	Probe, Calibration Date	DAE, Calibration Date
Twin-SAM V4.0 (30deg probe tilt) - 1351	HBBL-600-10000 Charge:xxxx, 2020-Oct-27	EX3DV4 - SN7374, 2019-10-28	DAE4 Sn640, 2019-10-11

**Scans Setup**

	Area Scan	Zoom Scan
Grid Extents [mm]	100.0 x 180.0	22.0 x 22.0 x 22.0
Grid Steps [mm]	10.0 x 10.0	4.0 x 4.0 x 1.4
Sensor Surface [mm]	3.0	1.4
Graded Grid	No	Yes
Grading Ratio	n/a	1.4
MAIA	N/A	N/A
Surface Detection	Mother Scan	6-point verification
Scan Method	Measured	Measured

**Measurement Results**

	Area Scan	Zoom Scan
Date	2020-10-27, 13:45	2020-10-27, 13:52
psSAR1g [W/Kg]	0.943	0.800
psSAR10g [W/Kg]	0.326	0.268
Power Drift [dB]	-0.10	-0.09
Power Scaling	Disabled	Disabled
Scaling Factor [dB]		
TSL Correction	No correction	No correction
M2/M1 [%]		
TDist 3dB Peak [mm]		



**Measurement Report for VSCAN, EDGE TOP, WLAN 5GHz, IEEE 802.11a/h WiFi 5 GHz (OFDM, 6 Mbps), Channel 165 (5825.0 MHz)**

**Device Under Test Properties**

Name, Manufacturer	Dimensions [mm]	IMEI	DUT Type
VSCAN, GE	131.0 x 65.0 x 32.0		Phone

**Exposure Conditions**

Phantom Section, TSL	Position, Test Distance [mm]	Band	Group, UID	Frequency [MHz], Channel Number	Conversion Factor	TSL Conductivity [S/m]	TSL Permittivity
Flat, HSL	EDGE TOP, 0.00	WLAN 5GHz	WLAN, 10062-CAC	5825.0, 165	4.69	5.28	35.2

**Hardware Setup**

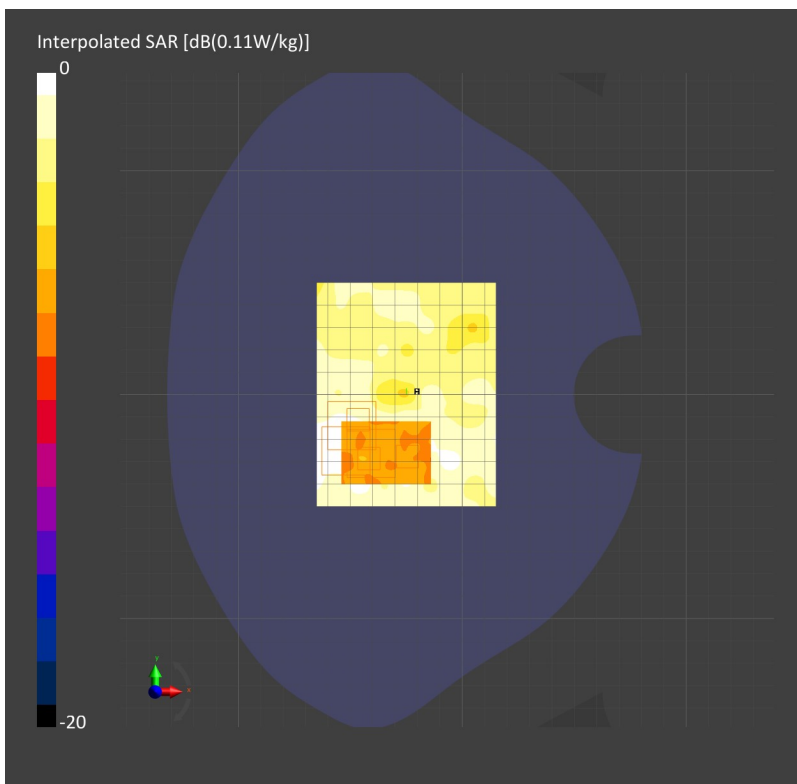
Phantom	TSL, Measured Date	Probe, Calibration Date	DAE, Calibration Date
Twin-SAM V4.0 (30deg probe tilt) - 1351	HBBL-600-10000 Charge:xxxx, 2020-Oct-27	EX3DV4 - SN7374, 2019-10-28	DAE4 Sn640, 2019-10-11

**Scans Setup**

	Area Scan	Zoom Scan
Grid Extents [mm]	80.0 x 100.0	22.0 x 22.0 x 22.0
Grid Steps [mm]	10.0 x 10.0	4.0 x 4.0 x 1.4
Sensor Surface [mm]	3.0	1.4
Graded Grid	No	Yes
Grading Ratio	n/a	1.4
MAIA	N/A	N/A
Surface Detection	Mother Scan	All points
Scan Method	Measured	Measured

**Measurement Results**

	Area Scan	Zoom Scan
Date	2020-10-27, 14:05	2020-10-27, 14:10
psSAR1g [W/Kg]	0.022	0.027
psSAR10g [W/Kg]	0.01	0.022
Power Drift [dB]	0.56	1.01
Power Scaling	Disabled	Disabled
Scaling Factor [dB]		
TSL Correction	No correction	No correction
M2/M1 [%]		
TDist 3dB Peak [mm]		



**Measurement Report for VSCAN, EDGE BOTTOM, WLAN 5GHz, IEEE 802.11a/h WiFi 5 GHz (OFDM, 6 Mbps), Channel 165 (5825.0 MHz)**

**Device Under Test Properties**

Name, Manufacturer	Dimensions [mm]	IMEI	DUT Type
VSCAN, GE	131.0 x 65.0 x 32.0		Phone

**Exposure Conditions**

Phantom Section, TSL	Position, Test Distance [mm]	Band	Group, UID	Frequency [MHz], Channel Number	Conversion Factor	TSL Conductivity [S/m]	TSL Permittivity
Flat, HSL	EDGE BOTTOM, 0.00	WLAN 5GHz	WLAN, 10062-CAC	5825.0, 165	4.69	5.28	35.2

**Hardware Setup**

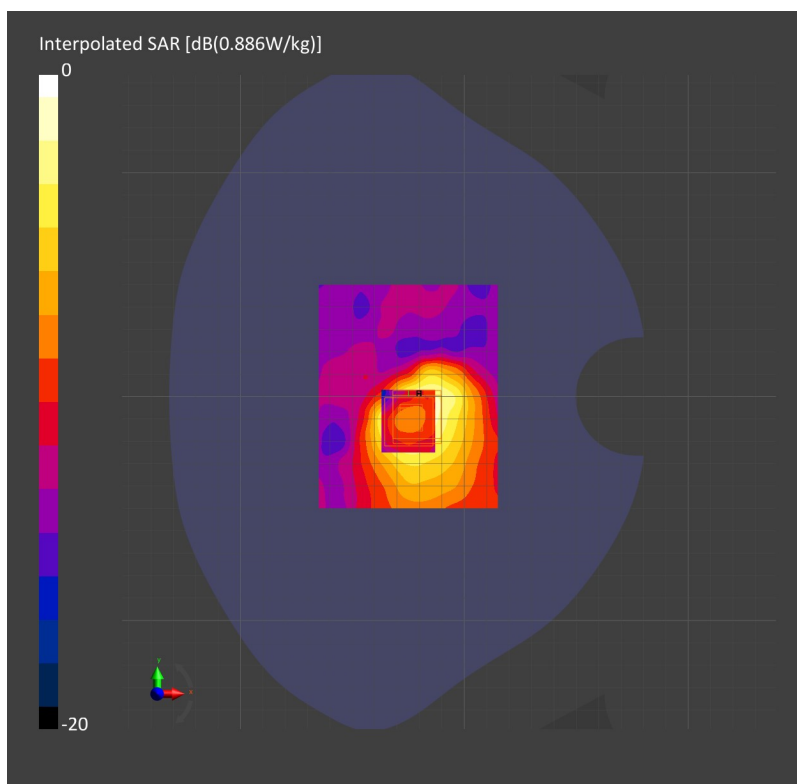
Phantom	TSL, Measured Date	Probe, Calibration Date	DAE, Calibration Date
Twin-SAM V4.0 (30deg probe tilt) - 1351	HBBL-600-10000 Charge:xxxx, 2020-Oct-27	EX3DV4 - SN7374, 2019-10-28	DAE4 Sn640, 2019-10-11

**Scans Setup**

	Area Scan	Zoom Scan
Grid Extents [mm]	80.0 x 100.0	22.0 x 22.0 x 22.0
Grid Steps [mm]	10.0 x 10.0	4.0 x 4.0 x 1.4
Sensor Surface [mm]	3.0	1.4
Graded Grid	No	Yes
Grading Ratio	n/a	1.4
MAIA	N/A	N/A
Surface Detection	Mother Scan	6-point verification
Scan Method	Measured	Measured

**Measurement Results**

	Area Scan	Zoom Scan
Date	2020-10-27, 14:14	2020-10-27, 14:19
psSAR1g [W/Kg]	0.266	0.246
psSAR10g [W/Kg]	0.097	0.098
Power Drift [dB]	-0.13	-0.06
Power Scaling	Disabled	Disabled
Scaling Factor [dB]		
TSL Correction	No correction	No correction
M2/M1 [%]		
TDist 3dB Peak [mm]		



**Measurement Report for VSCAN, FRONT, WLAN 5GHz, IEEE 802.11n (HT Mixed, 39 Mbps, BPSK), Channel 149 (5745.0 MHz)**

**Device Under Test Properties**

Name, Manufacturer	Dimensions [mm]	IMEI	DUT Type
VSCAN, GE	131.0 x 65.0 x 32.0		Phone

**Exposure Conditions**

Phantom Section, TSL	Position, Test Distance [mm]	Band	Group, UID	Frequency [MHz], Channel Number	Conversion Factor	TSL Conductivity [S/m]	TSL Permittivity
Flat, HSL	FRONT, 0.00	WLAN 5GHz	WLAN, 10196-CAC	5745.0, 149	4.69	5.17	35.2

**Hardware Setup**

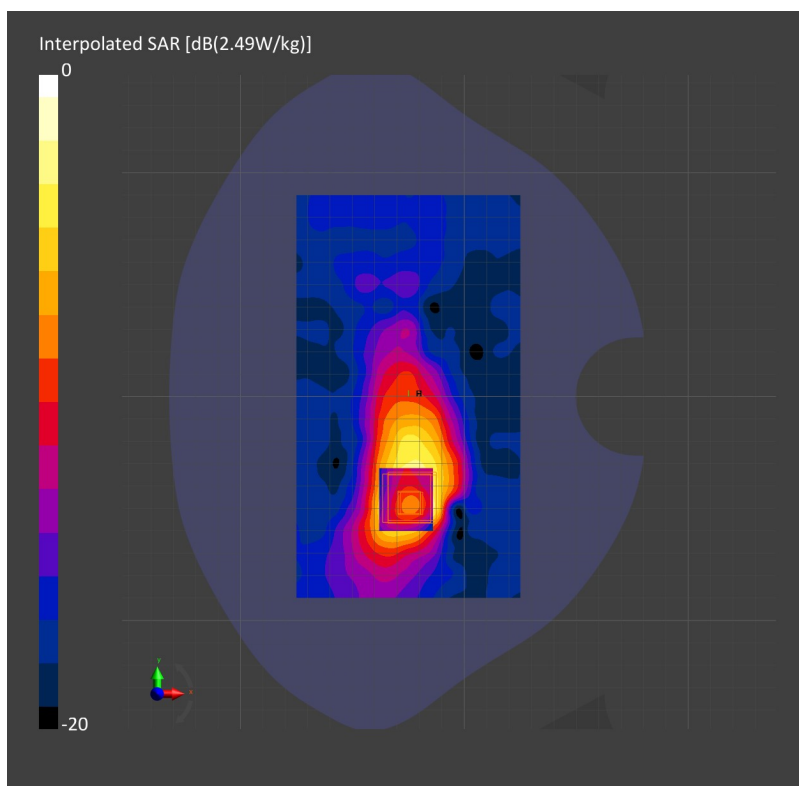
Phantom	TSL, Measured Date	Probe, Calibration Date	DAE, Calibration Date
Twin-SAM V4.0 (30deg probe tilt) - 1351	HBBL-600-10000 Charge:xxxx, 2020-Oct-27	EX3DV4 - SN7374, 2019-10-28	DAE4 Sn640, 2019-10-11

**Scans Setup**

	Area Scan	Zoom Scan
Grid Extents [mm]	100.0 x 180.0	22.0 x 22.0 x 22.0
Grid Steps [mm]	10.0 x 10.0	4.0 x 4.0 x 1.4
Sensor Surface [mm]	3.0	1.4
Graded Grid	No	Yes
Grading Ratio	n/a	1.4
MAIA	N/A	N/A
Surface Detection	Mother Scan	All points
Scan Method	Measured	Measured

**Measurement Results**

	Area Scan	Zoom Scan
Date	2020-10-27, 14:25	2020-10-27, 14:30
psSAR1g [W/Kg]	0.692	0.632
psSAR10g [W/Kg]	0.232	0.211
Power Drift [dB]	-0.03	0.01
Power Scaling	Disabled	Disabled
Scaling Factor [dB]		
TSL Correction	No correction	No correction
M2/M1 [%]		
TDist 3dB Peak [mm]		



**Measurement Report for VSCAN, FRONT, WLAN 5GHz, IEEE 802.11n (HT Mixed, 39 Mbps, BPSK), Channel 165 (5825.0 MHz)**

**Device Under Test Properties**

Name, Manufacturer	Dimensions [mm]	IMEI	DUT Type
VSCAN, GE	131.0 x 65.0 x 32.0		Phone

**Exposure Conditions**

Phantom Section, TSL	Position, Test Distance [mm]	Band	Group, UID	Frequency [MHz], Channel Number	Conversion Factor	TSL Conductivity [S/m]	TSL Permittivity
Flat, HSL	FRONT, 0.00	WLAN 5GHz	WLAN, 10196-CAC	5825.0, 165	4.69	5.28	35.2

**Hardware Setup**

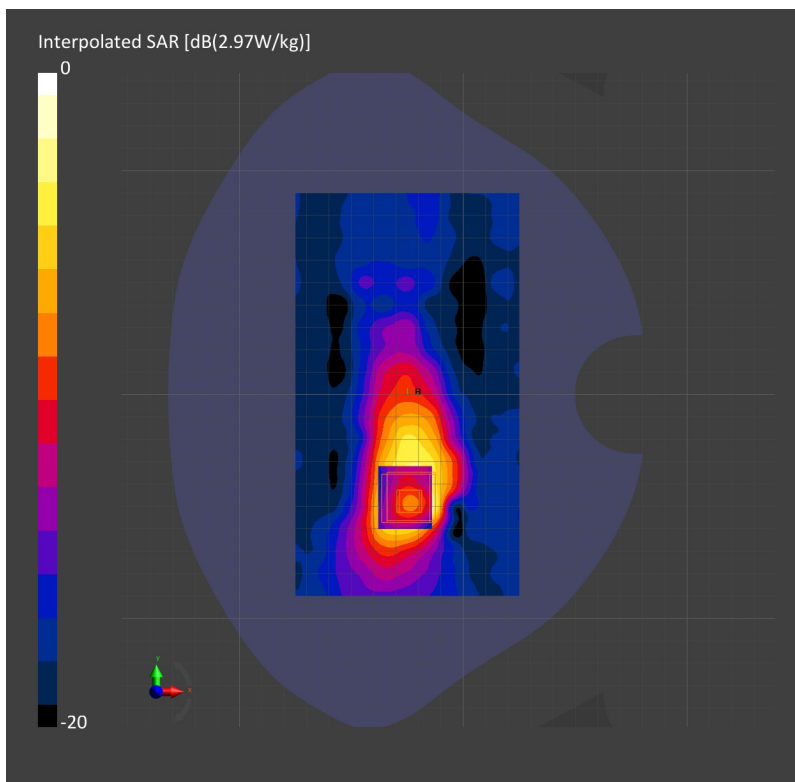
Phantom	TSL, Measured Date	Probe, Calibration Date	DAE, Calibration Date
Twin-SAM V4.0 (30deg probe tilt) - 1351	HBBL-600-10000 Charge:xxxx, 2020-Oct-27	EX3DV4 - SN7374, 2019-10-28	DAE4 Sn640, 2019-10-11

**Scans Setup**

	Area Scan	Zoom Scan
Grid Extents [mm]	100.0 x 180.0	22.0 x 22.0 x 22.0
Grid Steps [mm]	10.0 x 10.0	4.0 x 4.0 x 1.4
Sensor Surface [mm]	3.0	1.4
Graded Grid	No	Yes
Grading Ratio	n/a	1.4
MAIA	N/A	N/A
Surface Detection	Mother Scan	All points
Scan Method	Measured	Measured

**Measurement Results**

	Area Scan	Zoom Scan
Date	2020-10-27, 14:52	2020-10-27, 14:57
psSAR1g [W/Kg]	0.799	0.741
psSAR10g [W/Kg]	0.265	0.243
Power Drift [dB]	0.03	0.01
Power Scaling	Disabled	Disabled
Scaling Factor [dB]		
TSL Correction	No correction	No correction
M2/M1 [%]		
TDist 3dB Peak [mm]		



**Measurement Report for VSCAN, EDGE TOP, WLAN 5GHz, IEEE 802.11n (HT Mixed, 39 Mbps, BPSK), Channel 165 (5825.0 MHz)**

**Device Under Test Properties**

Name, Manufacturer	Dimensions [mm]	IMEI	DUT Type
VSCAN, GE	131.0 x 65.0 x 32.0		Phone

**Exposure Conditions**

Phantom Section, TSL	Position, Test Distance [mm]	Band	Group, UID	Frequency [MHz], Channel Number	Conversion Factor	TSL Conductivity [S/m]	TSL Permittivity
Flat, HSL	EDGE TOP, 0.00	WLAN 5GHz	WLAN, 10196-CAC	5825.0, 165	4.69	5.28	35.2

**Hardware Setup**

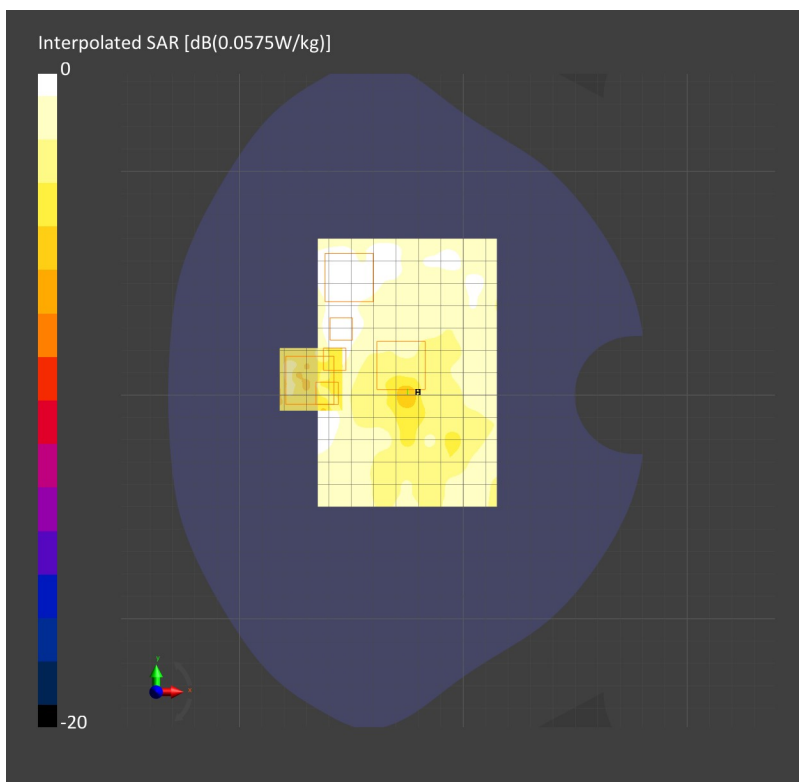
Phantom	TSL, Measured Date	Probe, Calibration Date	DAE, Calibration Date
Twin-SAM V4.0 (30deg probe tilt) - 1351	HBBL-600-10000 Charge:xxxx, 2020-Oct-27	EX3DV4 - SN7374, 2019-10-28	DAE4 Sn640, 2019-10-11

**Scans Setup**

	Area Scan	Zoom Scan
Grid Extents [mm]	80.0 x 100.0	22.0 x 22.0 x 22.0
Grid Steps [mm]	10.0 x 10.0	4.0 x 4.0 x 1.4
Sensor Surface [mm]	3.0	1.4
Graded Grid	No	Yes
Grading Ratio	n/a	1.4
MAIA	N/A	N/A
Surface Detection	Mother Scan	6-point verification
Scan Method	Measured	Measured

**Measurement Results**

	Area Scan	Zoom Scan
Date	2020-10-27, 15:00	2020-10-27, 15:05
psSAR1g [W/Kg]	0.020	0.028
psSAR10g [W/Kg]	0.009	0.024
Power Drift [dB]	0.19	-0.67
Power Scaling	Disabled	Disabled
Scaling Factor [dB]		
TSL Correction	No correction	No correction
M2/M1 [%]		
TDist 3dB Peak [mm]		



**Measurement Report for VSCAN, EDGE BOTTOM, WLAN 5GHz, IEEE 802.11n (HT Mixed, 39 Mbps, BPSK), Channel 165 (5825.0 MHz)**

**Device Under Test Properties**

Name, Manufacturer	Dimensions [mm]	IMEI	DUT Type
VSCAN, GE	131.0 x 65.0 x 32.0		Phone

**Exposure Conditions**

Phantom Section, TSL	Position, Test Distance [mm]	Band	Group, UID	Frequency [MHz], Channel Number	Conversion Factor	TSL Conductivity [S/m]	TSL Permittivity
Flat, HSL	EDGE BOTTOM, 0.00	WLAN 5GHz	WLAN, 10196-CAC	5825.0, 165	4.69	5.28	35.2

**Hardware Setup**

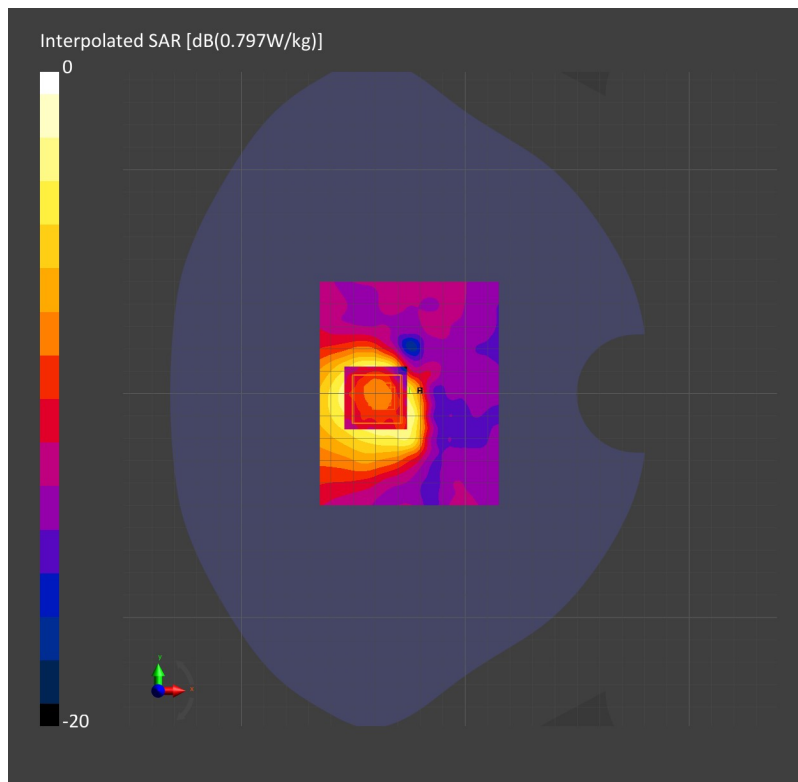
Phantom	TSL, Measured Date	Probe, Calibration Date	DAE, Calibration Date
Twin-SAM V4.0 (30deg probe tilt) - 1351	HBBL-600-10000 Charge:xxxx, 2020-Oct-27	EX3DV4 - SN7374, 2019-10-28	DAE4 Sn640, 2019-10-11

**Scans Setup**

	Area Scan	Zoom Scan
Grid Extents [mm]	80.0 x 100.0	22.0 x 22.0 x 22.0
Grid Steps [mm]	10.0 x 10.0	4.0 x 4.0 x 1.4
Sensor Surface [mm]	3.0	1.4
Graded Grid	No	Yes
Grading Ratio	n/a	1.4
MAIA	N/A	N/A
Surface Detection	Mother Scan	6-point verification
Scan Method	Measured	Measured

**Measurement Results**

	Area Scan	Zoom Scan
Date	2020-10-27, 15:07	2020-10-27, 15:12
psSAR1g [W/Kg]	0.244	0.223
psSAR10g [W/Kg]	0.092	0.092
Power Drift [dB]	-0.03	-0.12
Power Scaling	Disabled	Disabled
Scaling Factor [dB]		
TSL Correction	No correction	No correction
M2/M1 [%]		
TDist 3dB Peak [mm]		





## Measurement Report for VSCAN, FRONT, WLAN 5GHz, IEEE 802.11n (HT Greenfield, 81 Mbps, BPSK), Channel 151 (5755.0 MHz)

### Device Under Test Properties

Name, Manufacturer	Dimensions [mm]	IMEI	DUT Type
VSCAN, GE	131.0 x 65.0 x 32.0		Phone

### Exposure Conditions

Phantom Section, TSL	Position, Test Distance [mm]	Band	Group, UID	Frequency [MHz], Channel Number	Conversion Factor	TSL Conductivity [S/m]	TSL Permittivity
Flat, HSL	FRONT, 0.00	WLAN 5GHz	WLAN, 10114-CAC	5755.0, 151	4.69	5.19	35.2

### Hardware Setup

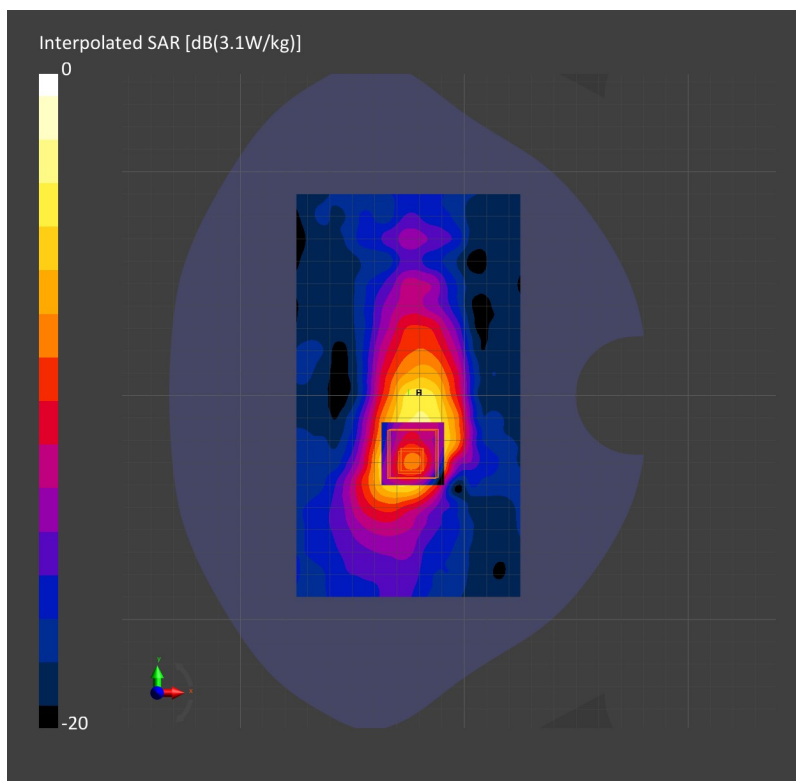
Phantom	TSL, Measured Date	Probe, Calibration Date	DAE, Calibration Date
Twin-SAM V4.0 (30deg probe tilt) - 1351	HBBL-600-10000 Charge:xxxx, 2020-Oct-27	EX3DV4 - SN7374, 2019-10-28	DAE4 Sn640, 2019-10-11

### Scans Setup

	Area Scan	Zoom Scan
Grid Extents [mm]	100.0 x 180.0	22.0 x 22.0 x 22.0
Grid Steps [mm]	10.0 x 10.0	4.0 x 4.0 x 1.4
Sensor Surface [mm]	3.0	1.4
Graded Grid	No	Yes
Grading Ratio	n/a	1.4
MAIA	N/A	N/A
Surface Detection	Mother Scan	All points
Scan Method	Measured	Measured

### Measurement Results

	Area Scan	Zoom Scan
Date	2020-10-27, 15:15	2020-10-27, 15:22
psSAR1g [W/Kg]	0.990	0.772
psSAR10g [W/Kg]	0.330	0.256
Power Drift [dB]	-0.06	-0.10
Power Scaling	Disabled	Disabled
Scaling Factor [dB]		
TSL Correction	No correction	No correction
M2/M1 [%]		
TDist 3dB Peak [mm]		



**Measurement Report for VSCAN, EDGE BOTTOM, WLAN 5GHz, IEEE 802.11n (HT Greenfield, 81 Mbps, BPSK), Channel 151 (5755.0 MHz)**

**Device Under Test Properties**

Name, Manufacturer	Dimensions [mm]	IMEI	DUT Type
VSCAN, GE	131.0 x 65.0 x 32.0		Phone

**Exposure Conditions**

Phantom Section, TSL	Position, Test Distance [mm]	Band	Group, UID	Frequency [MHz], Channel Number	Conversion Factor	TSL Conductivity [S/m]	TSL Permittivity
Flat, HSL	EDGE BOTTOM, 0.00	WLAN 5GHz	WLAN, 10114-CAC	5755.0, 151	4.69	5.19	35.2

**Hardware Setup**

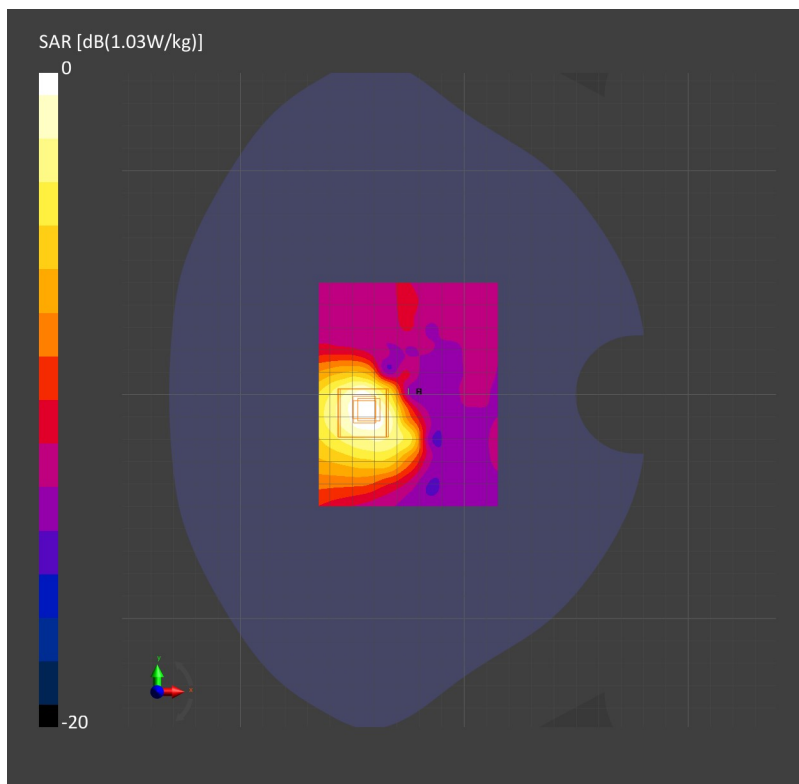
Phantom	TSL, Measured Date	Probe, Calibration Date	DAE, Calibration Date
Twin-SAM V4.0 (30deg probe tilt) - 1351	HBBL-600-10000 Charge:xxxx, 2020-Oct-27	EX3DV4 - SN7374, 2019-10-28	DAE4 Sn640, 2019-10-11

**Scans Setup**

	Area Scan	Zoom Scan
Grid Extents [mm]	80.0 x 100.0	22.0 x 22.0 x 22.0
Grid Steps [mm]	10.0 x 10.0	4.0 x 4.0 x 1.4
Sensor Surface [mm]	3.0	1.4
Graded Grid	No	Yes
Grading Ratio	n/a	1.4
MAIA	N/A	N/A
Surface Detection	Mother Scan	6-point verification
Scan Method	Measured	Measured

**Measurement Results**

	Area Scan	Zoom Scan
Date	2020-10-27, 15:46	2020-10-27, 15:52
psSAR1g [W/Kg]	0.267	0.285
psSAR10g [W/Kg]	0.100	0.113
Power Drift [dB]	-0.01	-0.02
Power Scaling	Disabled	Disabled
Scaling Factor [dB]		
TSL Correction	No correction	No correction
M2/M1 [%]		
TDist 3dB Peak [mm]		



**Measurement Report for VSCAN, FRONT, WLAN 5GHz, IEEE 802.11n (HT Greenfield, 81 Mbps, BPSK), Channel 159 (5795.0 MHz)**

**Device Under Test Properties**

Name, Manufacturer	Dimensions [mm]	IMEI	DUT Type
VSCAN, GE	131.0 x 65.0 x 32.0		Phone

**Exposure Conditions**

Phantom Section, TSL	Position, Test Distance [mm]	Band	Group, UID	Frequency [MHz], Channel Number	Conversion Factor	TSL Conductivity [S/m]	TSL Permittivity
Flat, HSL	FRONT, 0.00	WLAN 5GHz	WLAN, 10114-CAC	5795.0, 159	4.69	5.25	35.3

**Hardware Setup**

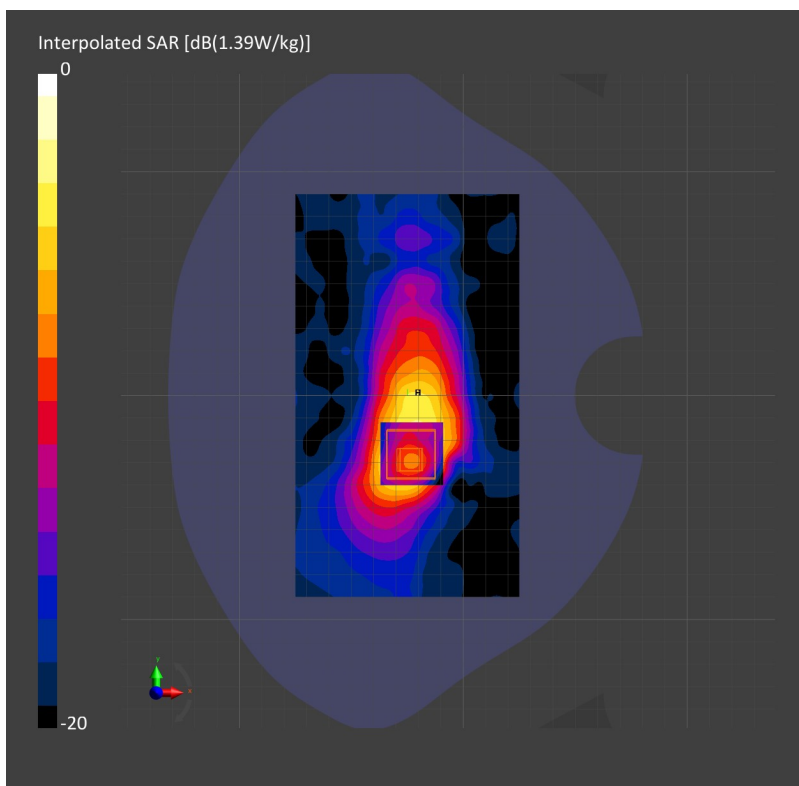
Phantom	TSL, Measured Date	Probe, Calibration Date	DAE, Calibration Date
Twin-SAM V4.0 (30deg probe tilt) - 1351	HBBL-600-10000 Charge:xxxx, 2020-Oct-27	EX3DV4 - SN7374, 2019-10-28	DAE4 Sn640, 2019-10-11

**Scans Setup**

	Area Scan	Zoom Scan
Grid Extents [mm]	100.0 x 180.0	22.0 x 22.0 x 22.0
Grid Steps [mm]	10.0 x 10.0	4.0 x 4.0 x 1.4
Sensor Surface [mm]	3.0	1.4
Graded Grid	No	Yes
Grading Ratio	n/a	1.4
MAIA	N/A	N/A
Surface Detection	Mother Scan	All points
Scan Method	Measured	Measured

**Measurement Results**

	Area Scan	Zoom Scan
Date	2020-10-27, 15:53	2020-10-27, 15:58
psSAR1g [W/Kg]	0.944	0.726
psSAR10g [W/Kg]	0.310	0.239
Power Drift [dB]	-0.08	-0.27
Power Scaling	Disabled	Disabled
Scaling Factor [dB]		
TSL Correction	No correction	No correction
M2/M1 [%]		
TDist 3dB Peak [mm]		



**Measurement Report for VSCAN, EDGE TOP, WLAN 5GHz, IEEE 802.11n (HT Greenfield, 81 Mbps, BPSK), Channel 159 (5795.0 MHz)**

**Device Under Test Properties**

Name, Manufacturer	Dimensions [mm]	IMEI	DUT Type
VSCAN, GE	131.0 x 65.0 x 32.0		Phone

**Exposure Conditions**

Phantom Section, TSL	Position, Test Distance [mm]	Band	Group, UID	Frequency [MHz], Channel Number	Conversion Factor	TSL Conductivity [S/m]	TSL Permittivity
Flat, HSL	EDGE TOP, 0.00	WLAN 5GHz	WLAN, 10114-CAC	5795.0, 159	4.69	5.25	35.3

**Hardware Setup**

Phantom	TSL, Measured Date	Probe, Calibration Date	DAE, Calibration Date
Twin-SAM V4.0 (30deg probe tilt) - 1351	HBBL-600-10000 Charge:xxxx, 2020-Oct-27	EX3DV4 - SN7374, 2019-10-28	DAE4 Sn640, 2019-10-11

**Scans Setup**

	Area Scan	Zoom Scan
Grid Extents [mm]	80.0 x 100.0	22.0 x 22.0 x 22.0
Grid Steps [mm]	10.0 x 10.0	4.0 x 4.0 x 1.4
Sensor Surface [mm]	3.0	1.4
Graded Grid	No	Yes
Grading Ratio	n/a	1.4
MAIA	N/A	N/A
Surface Detection	Mother Scan	6-point verification
Scan Method	Measured	Measured

**Measurement Results**

	Area Scan	Zoom Scan
Date	2020-10-27, 16:09	2020-10-27, 16:16
psSAR1g [W/Kg]	0.023	0.028
psSAR10g [W/Kg]	0.010	0.025
Power Drift [dB]	-0.16	0.38
Power Scaling	Disabled	Disabled
Scaling Factor [dB]		
TSL Correction	No correction	No correction
M2/M1 [%]		
TDist 3dB Peak [mm]		

