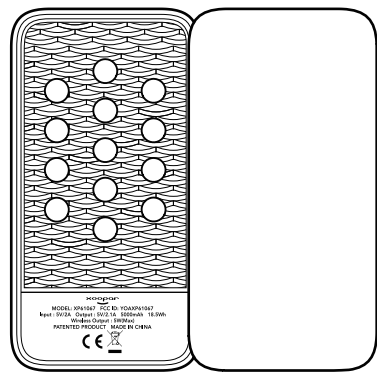


User Manual
BUBBLE BANG WIRELESS Power Bank 5000mAh

Model : XP61067



Specification and appearance subject to change without notice.
All trademarks and registered trademarks are the property of their respective owners © 2018 Xoopar Ltd.

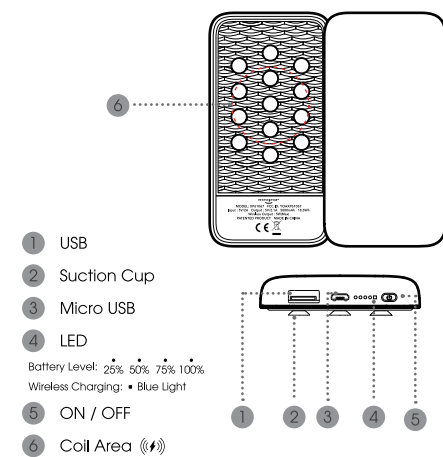


- 049 Suction cups for easy wireless charging, can charge more than 100% of your smart phone. Slim size to merge with your phone. Beautiful lighting logo.
- 050 Extraschlank. Große Logo-Fläche kann vollfarbig bedruckt werden. Schnurloses Ladegerät (5 W) mit hochwertigem Gehäuse aus gebürstetem Metall.
- 051 Ultra slank design. Groot logo-gedeelte voor een gekleurde print. Draadloos laadpad (5W) met een hoogwaardig geborstelde behuizing.
- 052 Taille ultra mince. Grande zone de logo pour l'impression en couleur. Bloc de charge sans fil (5W) avec boîtier brossé de haute qualité.
- 053 Tamaño ultra fino. Zona para logo de gran tamaño e impresión a todo color. Almofadilla inalámbrica de carga (5W) con estructura pulida de alta calidad.
- 054 Tamanho ultrafino. Área grande do logótipo para uma impressão de cor completa. Almofada de carregamento sem fios (5W) com estrutura escovada de alta qualidade.
- 055 Dimensioni ultra sottili. Ampia area logo per stampa a colori. Cuscinetto di ricarica wireless (5 W) con corpo di alta qualità.
- 056 超スリムサイズ。大きなロゴエリアはフルカラーの印字が可能。高品質ブラシ加工ボディのワイヤレス充電パッド (5W)。
- 057 울트라 슬림 사이즈. 풀 컬러 라인을 위한 빅 로고 구역. 고급 브러시 본체를 갖춘 무선 충전 패드 (5W).
- 058 عناصر تثبيت بالضغط اللاسلكي يمكنه شحن حتى 100 % من سعة هاتفك النكي. حجم نحيف يتدمج مع هاتفك. شعار مضيء جميل.
- 059 Sugkoppur fór enkel trúðlós laddning. kan ladda upp til 100 % þá dín smartphone. Smal storleik fór allt bili ett með telefonen. Vackert upplýst logotyp.
- 060 带吸盘，便于无线充电，最高储电量相当于您的智能手机的满电电量。薄型，可适配您的手机。漂亮的发光标志。
- 061 配備吸盤，便於進行無線充電，其電池容量能為智能手機提供1次100%的充電。超薄尺寸，能與手機完美融合。漂亮的發光商標。
- 062 Ventuze pentru încărcare wireless ușoară. pot încărca smartphone-ul dvs. până la 100%. Dimensiune subțire pentru a se asocia cu telefonul dvs. Logo iluminat frumos.
- 063 ซัดคัสแนฟ เพื่อการชาร์จไร้สายได้ง่ายๆ สามารถชาร์จได้ถึง 100% ของสมาร์ทโฟน. ขนาดบางเพื่อให้ออกมกสีนกับโทรศัพท์ของคุณ. โลโก้แสงไฟสวยงาม.

Specifications:

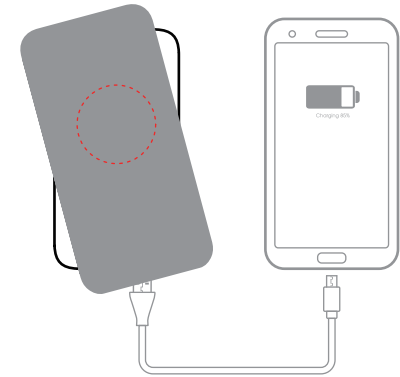
Battery Capacity: 5000mAh Rechargeable Battery
Battery Type: Li-Polymer Grade A
Case: ABS + Silicone
Input Voltage: 5V / 2A
Output Voltage: 5V / 2.1A
Wireless Output: 5W (Max)
Charge Time: App 2.5 Hours (AC / Computer)
Induction Distance: ≤ 8mm
Watt Hour: 18.5Wh
Patented Product

① Overview



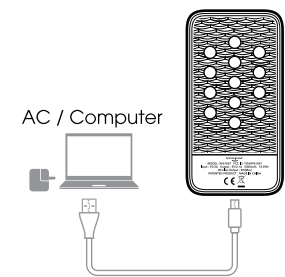
- 1 USB
- 2 Suction Cup
- 3 Micro USB
- 4 LED
- 5 ON / OFF
- 6 Coil Area (Ⓜ)

② Charge



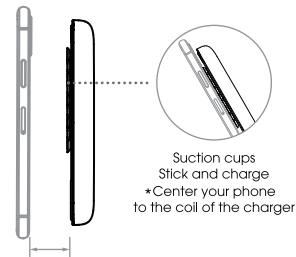
Can charge two devices at the same time.
Support Qi smartphones.

③ Recharge



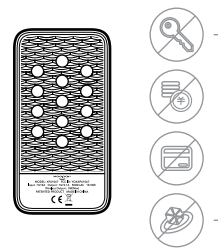
AC / Computer

④ Induction Distance



Induction distance ≤ 8 mm

⑤ FOD Safe Charge



Intelligent detection of metal objects.
When a foreign object is detected, charging stops and light flashes.

FCC Warning:

Any Changes or modifications not expressly approved by the party responsible for compliance could void the user's authority to operate the equipment.

This device complies with part 15 of the FCC Rules. Operation is subject to the following two conditions: (1) This device may not cause harmful interference, and (2) this device must accept any interference received, including interference that may cause undesired operation.

This equipment complies with FCC radiation exposure limits set forth for an uncontrolled environment. This equipment should be installed and operated with minimum distance 15 cm between the radiator & your body.

Note: This equipment has been tested and found to comply with the limits for a Class B digital device, pursuant to part 15 of the FCC Rules. These limits are designed to provide reasonable protection against harmful interference in a residential installation. This equipment generates, uses and can radiate radio frequency energy and, if not installed and used in accordance with the instructions, may cause harmful interference to radio communications. However, there is no guarantee that interference will not occur in a particular installation. If this equipment does cause harmful interference to radio or television reception, which can be determined by turning the equipment off and on, the user is encouraged to try to correct the interference by one or more of the following measures:

- Reorient or relocate the receiving antenna.
- Increase the separation between the equipment and receiver.
- Connect the equipment into an outlet on a circuit different from that to which the receiver is connected.
- Consult the dealer or an experienced radio/TV technician for help.